

4.7

**PORTICOS**

Porticos are encouraged on Squares fronting facades of Trust Blocks. They shall not exceed 80% of the width of the building.

4.8

**BAY WINDOWS**

Bay windows over public sidewalks and lanes are prohibited. Bay windows within the property boundaries are discouraged.

4.9

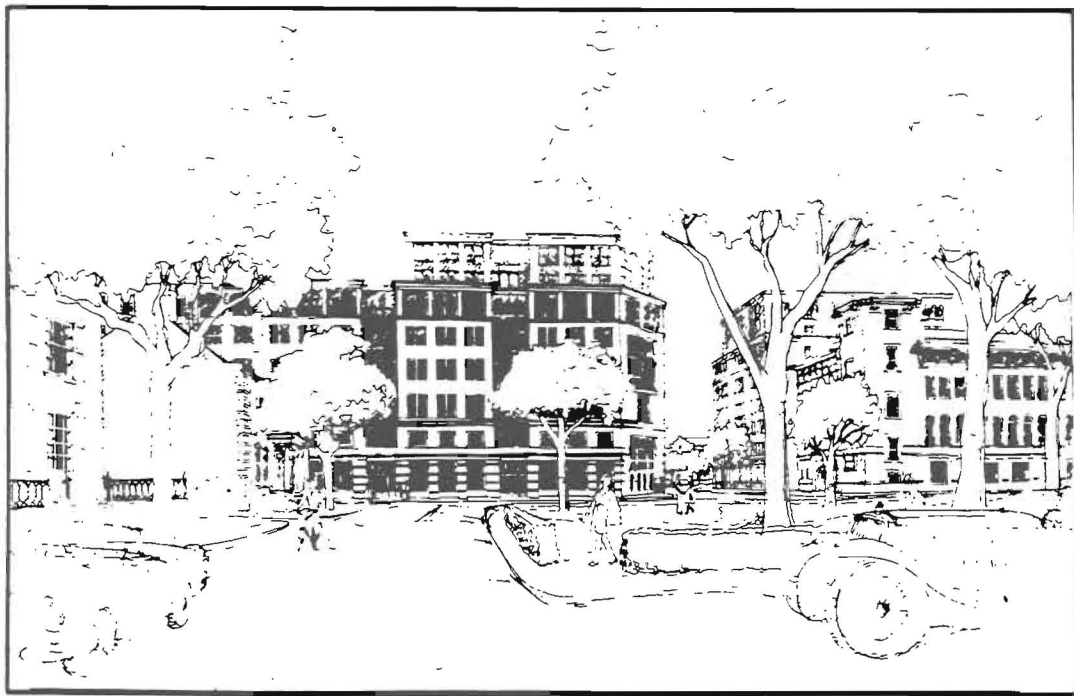
**ARCHITECTURAL CHARACTERISTICS**

Architectural characteristics shall conform to those for commercial buildings generally (Section 3.5) with the following additions and exceptions.

4.9.1

**BUILDING WALLS**

Building walls shall conform to the provisions of Section 6.1 except where specific material palettes are prescribed as part of an overlay or edge district in Sections 8 or 9. Buildings taller than 6 stories shall not use stucco as a primary material. Buildings of 5 or 6 stories shall use stucco only with incorporation of base types 3.5.1.C(3), (4), and (5), and with bracketed roofs or elaborate cornices and articulation of entries, lintels and other elements providing visual relief to the facade.



Reynolds Square