

**Resolution to Revise the FY 2015 – 2018 Transportation Improvement Program of
the Coastal Region Metropolitan Planning Organization (CORE MPO)**

WHEREAS, the Coastal Region Metropolitan Planning Organization (CORE MPO) desires to adopt amendments and affirm administrative modifications to the FY 2015 - 2018 Transportation Improvement Program (TIP) for the CORE MPO transportation planning area; and

WHEREAS, the proposed TIP amendments include the following changes:

- *PI#*: 0007128, CR 787/Islands Expressway @Wilmington River/Bascule Bridge - move the construction phase from FY 2017 to FY 2018 with updated cost estimates, and add the utility phase to FY 2018; and
- Delete the following special studies from the TIP:
 - SAVANNAH MPO STRATEGIC PLANNING STUDY – SECTOR FOURTEEN;
 - MODEL DEVELOPMENT AND APPLICATIONS;
 - SURFACE TRANSPORTATION ACT AND FHWA/FTA RULES COMPLIANCE;
 - VICTORY DRIVE CORRIDOR STUDY IV;
 - AIRPORT AREA TRANSPORTATION MASTER PLAN;
 - CAT STREETCAR STUDY; and

WHEREAS, the TIP administrative modifications include moving the utility and construction phases from FY 2018 to FY 2017 with cost updates and funding code changes for the following projects:

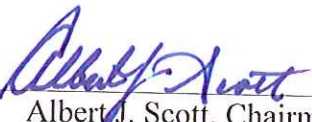
- *PI #*: 0007259, CR 984/JIMMY DELOACH PARKWAY @ SR 17 – INTERCHANGE;
- *PI #*: 522790, JIMMY DELOACH PARKWAY EXTENSION FM I-16 TO SR 26/US 80; and

WHEREAS, CORE MPO has completed a 15-day public review and comment period for the proposed TIP amendments according to the Participation Plan and addressed all received comments, and received information on TIP administrative modifications from GDOT; and

WHEREAS, CORE MPO understands that these revisions to the existing FY 2015 - 2018 TIP reflect the project production status and are necessary to facilitate the ongoing development of the priority projects.

NOW, THEREFORE, BE IT RESOLVED THAT, the Coastal Region Metropolitan Planning Organization approves the proposed amendments and affirms administrative modifications to the FY 2015 - 2018 Transportation Improvement Program as shown in the summary of TIP update report with any corrections based upon the motion of June 28, 2017.

Approved this day, June 28, 2017.


Albert J. Scott, Chairman
Coastal Region Metropolitan Planning Organization

Updates to FY 2015 - 2018 Transportation Improvement Program of the Coastal Region Metropolitan Planning Organization (CORE MPO)

June 2017

The Transportation Improvement Program (TIP) is the MPO's short-range programming document and is a staged, multi-year listing of surface transportation projects proposed for federal, state and local funding within the metropolitan area. The TIP may be modified in accordance with the procedures outlined in the adopted Participation Plan by resolution of the CORE MPO Board if priorities, area goals, project schedules or funding levels change. The CORE MPO's FY 2015 - 2018 TIP was adopted by the MPO Board in August 2014. Several administrative modifications and TIP amendments have been processed for various projects. The original adopted TIP and the amendment reports are all available for review on the MPO website at <http://www.thempc.org/Dept/Tip>.

In June 2017 GDOT requested a TIP amendment for PI# 0007128, CR 787/Islands Expressway @ Wilmington River/Bascule Bridge. The amendment is to move the construction (CST) phase currently programmed in FY 2017 to FY 2018 with cost estimates increased by more than \$20 million. GDOT indicated that the amendment is needed in June 2017 because the project is set for letting in August 2017. Even if the updated project information is included in the upcoming FY 2018 – 2021 TIP which was adopted by the CORE MPO Board in June 2017, the final approval of this new TIP by the Governor will not happen before the project letting date. In short, the FY 2015 – 2018 TIP will still be in effect before it's superseded by the governor - approved FY 2018 – 2021 TIP. Thus to ensure timely letting of the project, the information contained in the current FY 2015 – 2018 TIP must be up-to-date. PI# 0007128 was awarded Z230 funds for its utility (UTL) phase during the 2017 Call for Projects process for FY 2018 – 2021 TIP development. The UTL update should be a part of this TIP amendment process. In order to accommodate the UTL phase of PI# 0007128 in the FY 2015 – 2018 TIP, several Z230-funded studies will be deleted so that Z230 funding balance can still be maintained.

The adopted TIP/STIP amendment process outlined in the CORE MPO's Participation Plan requires public review and comment and responses to all comments (either individually or in summary form) for all TIP amendments. In order to process the proposed TIP amendments, CORE MPO advertised a fifteen (15) day public review and comment period in the Savannah Morning News on Sunday, June 11, 2017. The notice was sent to the local news media and the consultation agencies as well as neighborhood associations, and posted on the CORE MPO website. The comment period started on June 13, 2017 and closed on June 27, 2017. A public hearing for the proposed TIP amendments was held in conjunction with the CORE MPO Board meeting on June 28, 2017. No public comments have been received. The proposed amendments to the FY 2015 - 2018 TIP were endorsed by the Citizens Advisory Committee (CAC) on June 1, 2017 and the Technical Coordinating Committee (TCC) on June 15, 2017. The CORE MPO Board approved these TIP amendments on June 28, 2017.

After the June 15, 2017 TCC meeting, GDOT notified CORE MPO that funds for two projects currently programmed in FY 2018 in the FY 2015 – 2018 TIP had been authorized. These two paired Chatham County projects - PI# 0007259, CR 984/JIMMY DELOACH PARKWAY @ SR 17 – INTERCHANGE and PI# 522790, JIMMY DELOACH PARKWAY EXTENSION FM I-16 TO SR 26/US 80 – are scheduled for letting in July 2017. To be consistent, CORE MPO processed TIP administrative modifications for these two projects to move their UTL and CST phases from FY 2018 to FY 2017. The adopted TIP/STIP amendment process does not require public participation process for administrative modifications. The process consists of the following steps: 1) MPO staff transmits a confirmation to GDOT; 2) MPO staff posts the updated portion of the document(s) on the MPO web site; and 3) GDOT sends a monthly list of notifications about administrative modifications to all involved parties, with change

summaries sent on a monthly basis to the FHWA and FTA. The updated information on these two projects was presented to the Technical Coordinating Committee on June 23, 2017 and the CORE MPO Board on June 28, 2017 for reference and information. The CORE MPO affirmed these TIP administrative modifications.

The following outlines the June 2017 Amendments and Administrative Modifications to the FY 2015 – 2018 Transportation Improvement Program.

Amendments

CR 787/Islands Expressway @Wilmington River/Bascule Bridge

- **PI #:** 0007128
- **MTP Priority:** ROW and CST phases are in the 2040 MTP, Cost Band One.
- **Project description:** Replace the bascule bridge at Islands Expressway/Wilmington River with a high-level fixed bridge.
- **Project Status:** Chatham County is the project sponsor. Funds for Preliminary Engineering (PE) phase were programmed in previous years and were authorized. The revised concept report was approved. Final design is on-going. ROW phase is programmed in FY 2015 with local SPLOST funds in the FY 2015 – 2018 TIP and the funds have been authorized. ROW acquisition is complete. Construction (CST) is programmed with Z001 funds in FY 2017 in FY 2015 – 2018 TIP. Both the construction phase and the utility phase are programmed in FY 2018 in the FY 2018 – 2021 TIP.
- **Amendments:**
 - GDOT requested to move the construction phase to FY 2018 with updated cost estimates. The funding code (Z001) remains unchanged.
 - CORE MPO will add the utility (UTL) phase to FY 2018 to be consistent with the FY 2018 – 2021 TIP. The UTL phase will be funded with Z230 funds, and Chatham County will provide the local match.
- **Reason for Amendment:** Roadway project phases that have a cost increase of more than \$2,000,000 is considered an amendment. Addition of a phase of a project is also considered an amendment.
- **Funding/Year:**

Year	Phase	Funding Code	Fed\$	State\$	Other\$	Total Funding	
2017	CST	Z001	\$28,011,638.75	\$7,002,909.69	\$0.00	\$35,014,548.44	Current
2018	CST	Z001	\$44,830,945.72	\$11,207,736.43	\$0.00	\$56,038,682.15	Amended
NA	UTL	NA	NA	NA	NA	NA	Current
2018	UTL	Z230	\$ 257,600	\$0	\$ 64,400	\$322,000	Amended

- **Requesting date:** June 2017
- **Requesting Agency:** GDOT/CORE MPO
- **Comment Period:** 6/13/2017 – 6/27/2017

Special Studies to be Deleted from FY 2015 – 2018 TIP

The current Z230 balance as of the end of FY 2018 is \$20,406 in FY 2015 – 2018 TIP, not enough to accommodate the UTL phase of the Islands Expressway bridge replacement project (PI# 0007128). However, several special studies currently programmed with Z230 funds need to be deleted from the TIP.

These special studies might be pursued later with other funding sources and their programming will be following the FHWA Procurement Process for Georgia MPOs that was implemented several years ago. The following table summarizes these special studies. The released funds from them are enough to cover the UTL phase of PI# 0007128. Deletion of these projects from FY 2015 – 2018 TIP is also considered a TIP amendment. It should be noted that these released funds have already been accounted for during the Call for Projects process for the FY 2018 – 2021 TIP development (as a part of the Z230 revenue projections for the new TIP) and part of them are allocated to PI# 0007128. In short, the information for the June 2017 amendments to FY 2015 – 2018 TIP is consistent with information contained in the new FY 2018 – 2021 TIP.

PI#	Description	Funding Code	Funding Amount	Fiscal Year
TBA	SAVANNAH MPO STRATEGIC PLANNING STUDY – SECTOR FOURTEEN	Z230	\$500,000	FY 2018
TBA	MODEL DEVELOPMENT AND APPLICATIONS	Z230	\$159,621	FY 2017
TBA	SURFACE TRANSPORTATION ACT AND FHWA/FTA RULES COMPLIANCE	Z230	\$15,000	FY 2017
TBA	VICTORY DRIVE CORRIDOR STUDY IV	Z230	\$100,000	FY 2018
TBA	AIRPORT AREA TRANSPORTATION MASTER PLAN	Z230	\$255,000	FY 2017
TBA	CAT STREETCAR STUDY	Z230	\$85,000	FY 2017
Total Z230 Funds			\$1,114,621	

Administrative Modifications

CR 984/JIMMY DELOACH PARKWAY @ SR 17 – INTERCHANGE

- **PI #:** 0007259
- **MTP Priority:** ROW and CST phases are in the 2040 MTP, Cost Band One.
- **Project description:** Construct a new interchange where Jimmy DeLoach Parkway currently intersects US 80/SR 26/SR17 at grade.
- **Project Status:** Chatham County is the project sponsor. Right-of-way (ROW) is programmed in FY 2015 with Z230, Z240 and local SPLOST funds in the FY 2015 – 2018 TIP and the funds have been authorized. ROW acquisition is complete. Utility (UTL) phase is programmed in FY 2018 with local funds and construction (CST) is scheduled in FY 2018 with Z240 funds in FY 2015 – 2018 TIP.
- **Updates**
 - Move UTL phase from FY 2018 to FY 2017 with minor cost updates. Funding source (local) remains unchanged.
 - Move CST phase from FY 2018 to FY 2017 with cost updates. Replace funding source from Z240 to HB 170.
- **Reason for Updates:** Changing funding category is considered an administrative modification. It is also an administrative modification to shift projects within the 4-year STIP as long as it does not impact financial constraint.

- **Funding/Year:**

Year	Phase	Funding Code	Fed\$	State\$	Other\$	Total Funding	
2018	CST	Z240	\$14,131,546	\$3,532,886	\$0.00	\$17,664,432	Current
2017	CST	HB 170	\$0	\$26,776,144	\$0.00	\$26,776,144	Updated
2018	UTL	Local	\$0	\$0	\$478,000	\$478,000	Current
2017	UTL	Local	\$0	\$0	\$514,128	\$514,128	Updated

JIMMY DELOACH PARKWAY EXTENSION FM I-16 TO SR 26/US 80

- **PI #:** 522790
- **MTP Priority:** CST phase is in the 2040 MTP, Cost Band One.
- **Project description:** Widen and reconstruct to four lanes divided, Bloomingdale Road from I-16 to Pine Barren Road. Construct four lanes divided on new location from Pine Barren Road to SR 26/US 80 in Bloomingdale.
- **Project Status:** Chatham County is the project sponsor. ROW acquisition is complete. Utility phase is programmed in FY 2018 with local funds and construction is scheduled in FY 2018 with Z240 funds in the FY 2015 – 2018 TIP.
- **Updates**
 - Move UTL phase from FY 2018 to FY 2017 with minor cost updates. Funding source (local) remains unchanged.
 - Move CST phase from FY 2018 to FY 2017 with cost updates. Replace funding source from Z240 to HB 170.
- **Reason for Updates:** Changing funding category is considered an administrative modification. It is also an administrative modification to shift projects within the 4-year STIP as long as it does not impact financial constraint.
- **Funding/Year:**

Year	Phase	Funding Code	Fed\$	State\$	Other\$	Total Funding	
2018	CST	Z240	\$19,639,475	\$4,909,869	\$0.00	\$24,549,344	Current
2017	CST	HB 170	\$0	\$26,306,555	\$0.00	\$26,306,555	Updated
2018	UTL	Local	\$0	\$0	\$22,082	\$22,082	Current
2017	UTL	Local	\$0	\$0	\$154,000	\$154,000	Updated

Appendix

Several appendices are attached with this report:

- Appendix A - the updated project pages of FY 2015 – 2018 TIP that incorporates the proposed amendments and administrative modifications
- Appendix B – 2040 MTP Addendum to document the updates
- Appendix C - the public involvement materials including the change requests

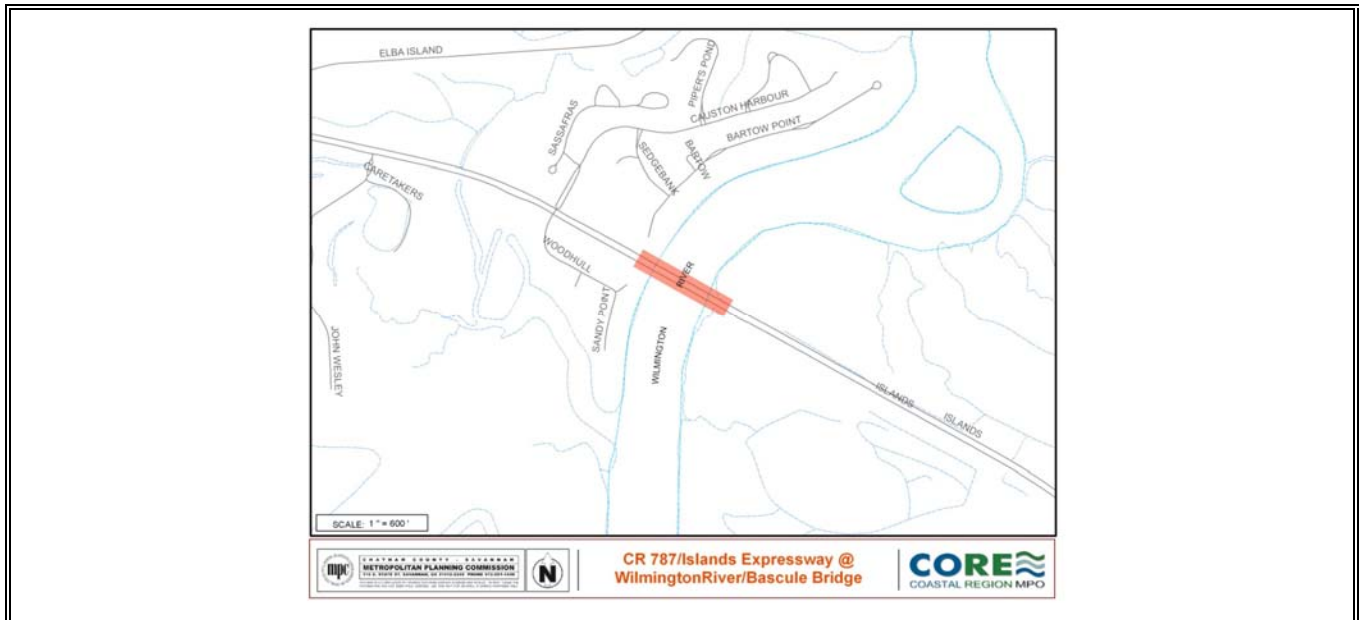
Appendix A: updated TIP project pages incorporating the proposed changes

Current Project Page – PI# 0007128

**COASTAL REGION METROPOLITAN PLANNING ORGANIZATION
FY 2015 - 2018 TRANSPORTATION IMPROVEMENT PROGRAM**

CR 787/ISLANDS EXPRESSWAY @ WILMINGTON RIVER/BASCULE BRIDGE				P.I. #: 0007128		
PROJECT DESCRIPTION: Replace the bascule bridge at Islands Expressway/Wilmington River with a high-level fixed bridge.				TIP #: 2005-H-03		
				COUNTY: CHATHAM		
				PROJ. #: CSBRG-0007-00(128)		
				FUND: Z001, Local		
				GDOT DISTRICT: 5		
TRAFFIC VOL. 2005 AADT:		2030:		CONG. DISTRICT: 1		
NO. OF LANES EXISTING:	4	PLANNED:	4	RC: CG		
LOCAL ROAD #:	STATE/US ROAD #:		LENGTH (MI): 1.2			
COMMENTS/REMARKS: Chatham County is the project sponsor. A concept meeting was held in 2007. The consultant has analyzed the alternatives and GDOT selected Alternative 8. The revised concept report was approved on March 9, 2012. Design is on-going. \$1 million of MPO sub-allocation of ARRA funds were authorized to fund PE in FY 2010. Right-of-way is the local responsibility and programmed in 2015. The ROW funds have been authorized. Construction is in programmed in FY 2017 with Z001 funds.						
PROJECT PHASE	\$ SOURCE	FY 2015	FY 2016	FY 2017	FY 2018	TOTAL
PRELIM. ENGR.	Authorized	\$0	\$0	\$0	\$0	\$0
RIGHT-OF-WAY	Local	\$119,917	\$0	\$0	\$0	\$119,917
UTILITY	Local	\$0	\$0	\$0	\$0	\$0
CONSTRUCTION	Federal/State	\$0	\$0	\$35,014,548.44	\$0	\$35,014,548.44
PROJECT COST		\$119,917	\$0	\$35,014,548.44	\$0	\$35,134,465.44
FEDERAL COST		\$0	\$0	\$28,011,638.75	\$0	\$28,011,638.75
STATE COST		\$0	\$0	\$7,002,909.69	\$0	\$7,002,909.69
LOCAL COST		\$119,917	\$0	\$0	\$0	\$119,917

PROJECT LOCATION

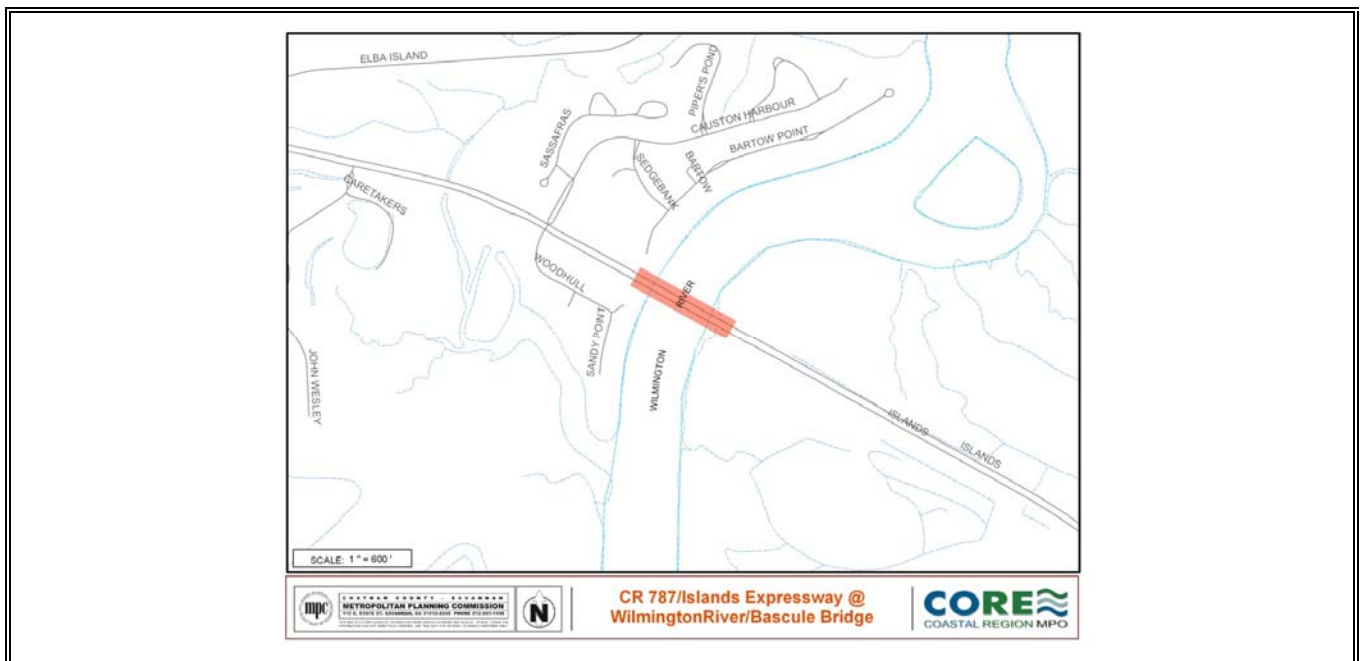


Revised Project Page – PI# 0007128

**COASTAL REGION METROPOLITAN PLANNING ORGANIZATION
FY 2015 - 2018 TRANSPORTATION IMPROVEMENT PROGRAM**

CR 787/ISLANDS EXPRESSWAY @ WILMINGTON RIVER/BASCULE BRIDGE				P.I. #: 0007128		
				TIP #: 2005-H-03		
PROJECT DESCRIPTION: Replace the bascule bridge at Islands Expressway/Wilmington River with a high-level fixed bridge.				COUNTY: CHATHAM		
				PROJ. #: CSBRG-0007-00(128)		
				FUND: Z001, Z230 , Local		
				GDOT DISTRICT: 5		
				CONG. DISTRICT: 1		
TRAFFIC VOL. 2005 AADT:	2030:		RC: CG			
NO. OF LANES EXISTING: 4	PLANNED: 4		LENGTH (MI): 1.2			
LOCAL ROAD #:	STATE/US ROAD #:					
COMMENTS/REMARKS: Chatham County is the project sponsor. A concept meeting was held in 2007. The consultant has analyzed the alternatives and GDOT selected Alternative 8. The revised concept report was approved on March 9, 2012. Design is on-going. \$1 million of MPO sub-allocation of ARRA funds were authorized to fund PE in FY 2010. Right-of-way is the local responsibility and programmed in FY 2015. The ROW funds have been authorized. Utility phase is programmed in FY 2018 with Z230 funds and Chatham County will provide the local match. Construction phase is programmed in FY 2018 with Z001 funds.						
PROJECT PHASE	\$ SOURCE	FY 2015	FY 2016	FY 2017	FY 2018	TOTAL
PRELIM. ENGR.	Authorized	\$0	\$0	\$0	\$0	\$0
RIGHT-OF-WAY	Local	\$119,917	\$0	\$0	\$0	\$119,917
UTILITY	Federal/Local	\$0	\$0	\$0	\$322,000	\$322,000
CONSTRUCTION	Federal/State	\$0	\$0	\$0	\$56,038,682	\$56,038,682
PROJECT COST		\$119,917	\$0	\$0	\$56,360,682	\$56,480,599
FEDERAL COST		\$0	\$0	\$0	\$45,088,546	\$45,088,546
STATE COST		\$0	\$0	\$0	\$11,207,736	\$11,207,736
LOCAL COST		\$119,917	\$0	\$0	\$64,400	\$184,317

PROJECT LOCATION



Current Project Page – PI# 0007259

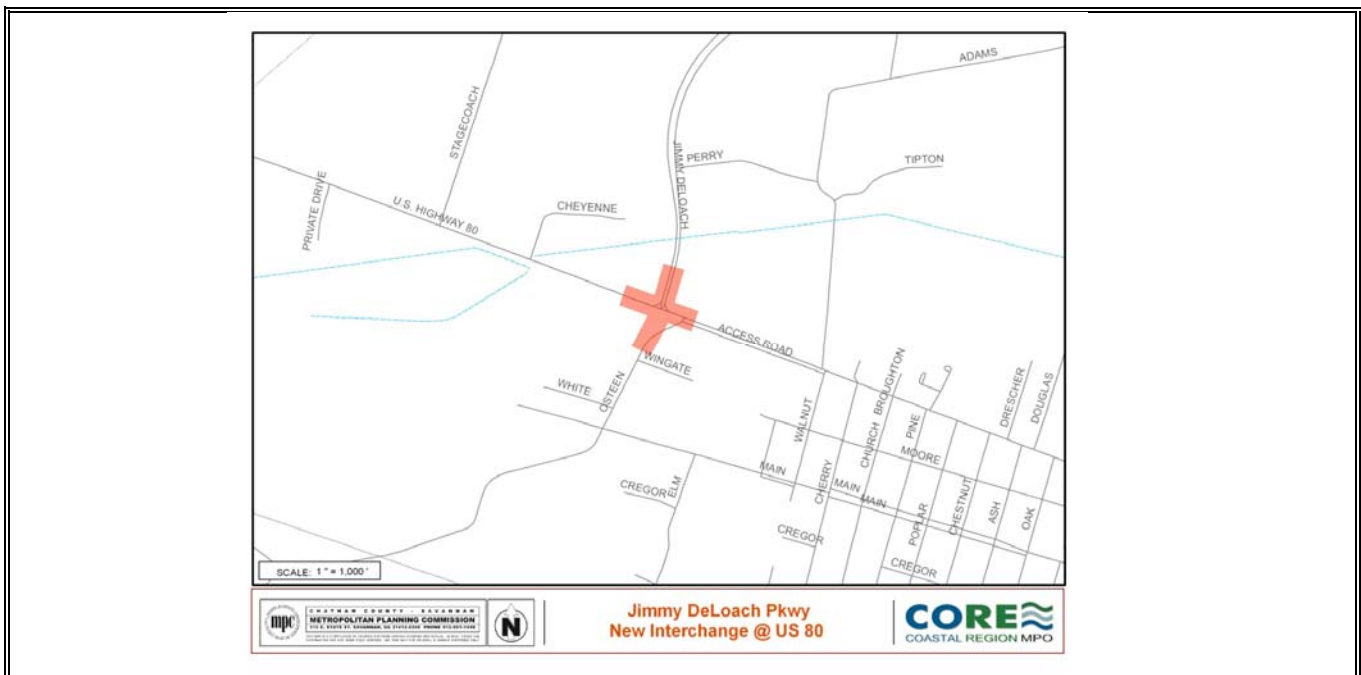
**COASTAL REGION METROPOLITAN PLANNING ORGANIZATION
FY 2015 - 2018 TRANSPORTATION IMPROVEMENT PROGRAM**

CR 984/JIMMY DELOACH PARKWAY @ SR 17 - INTERCHANGE PROJECT DESCRIPTION: Construct a new interchange where Jimmy DeLoach Parkway currently intersects US 80/SR 26/SR17 at grade.				P.I. #:	0007259
				TIP #:	2005-H-1
				COUNTY:	CHATHAM
				PROJ. #:	CSSTP-0007-00(259)
				FUND:	Z230*, Local*, Z240
				GDOT DISTRICT:	5
TRAFFIC VOL. 2010 AADT:	17,760/10,860	2030:	30,650/29,280	CONG. DISTRICT:	1
NO. OF LANES EXISTING:	6	PLANNED:	6	RC:	CG
LOCAL ROAD #:	STATE/US ROAD #: SR 26/US 80			LENGTH (MI):	1.1

COMMENTS/REMARKS: The Concept Report was approved on April 17, 2008. VE study is complete. Environmental document was approved in May 2014. Right-of-way is programmed in FY 2015 with Z230, Z240 and local SPLOST funds. Utility phase is programmed in FY 2018 with local funds. Construction is scheduled in FY 2018 with Z240 funds. *\$4 million of federal Z230 funds and \$2 million of Z240 federal/state funds will be used for ROW. Local funds of \$1 million from SPLOST will be used to match the Z230 grant. Additional \$1,700,000 local SPLOST funds will be used for the balance of the ROW costs.

PROJECT PHASE	\$ SOURCE	FY 2015	FY 2016	FY 2017	FY 2018	TOTAL
PRELIM. ENGR.	Authorized	\$0	\$0	\$0	\$0	\$0
RIGHT-OF-WAY	Federal/Local*	\$8,700,000	\$0	\$0	\$0	\$8,700,000
UTILITY	Local	\$0	\$0	\$0	\$478,000	\$478,000
CONSTRUCTION	Federal/State	\$0	\$0	\$0	\$17,664,432	\$17,664,432
PROJECT COST		\$8,700,000	\$0	\$0	\$18,142,432	\$26,842,432
FEDERAL COST		\$5,600,000	\$0	\$0	\$14,131,546	\$19,731,546
STATE COST		\$400,000	\$0	\$0	\$3,532,886	\$3,932,886
LOCAL COST*		\$2,700,000	\$0	\$0	\$478,000	\$3,178,000

PROJECT LOCATION

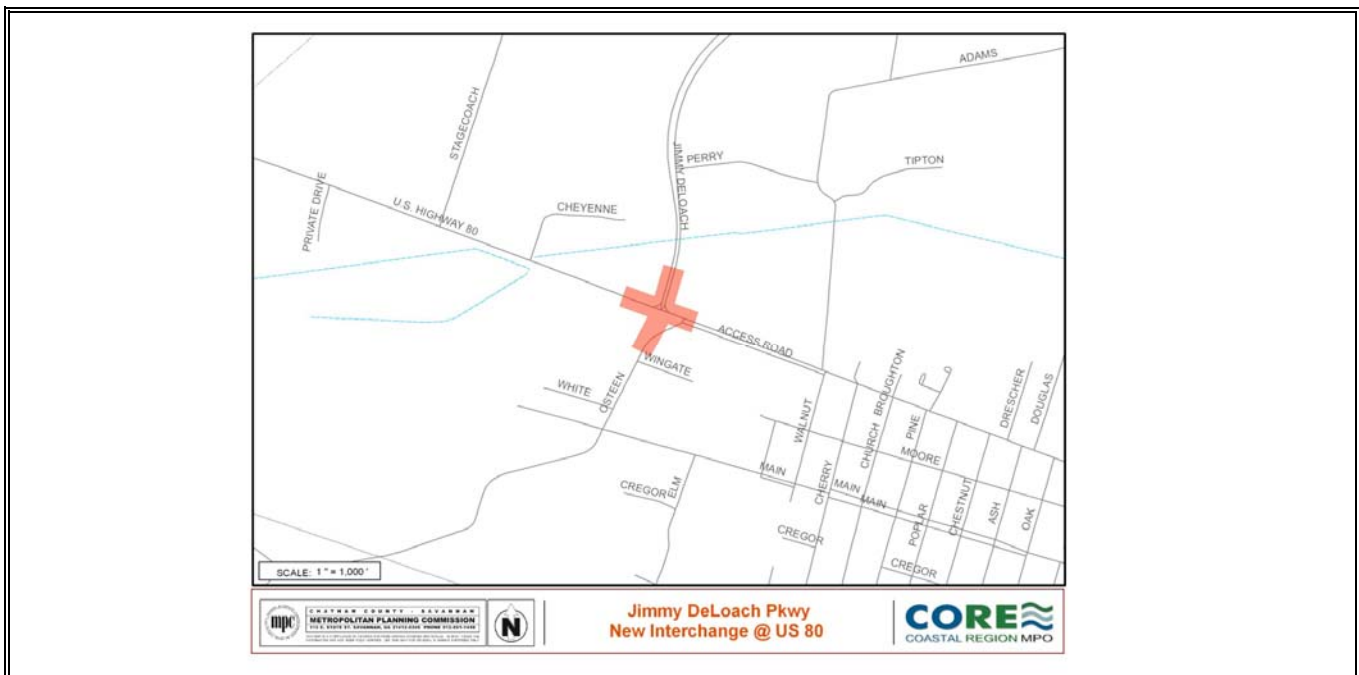


Revised Project Page – PI# 0007259

**COASTAL REGION METROPOLITAN PLANNING ORGANIZATION
FY 2015 - 2018 TRANSPORTATION IMPROVEMENT PROGRAM**

CR 984/JIMMY DELOACH PARKWAY @ SR 17 - INTERCHANGE PROJECT DESCRIPTION: Construct a new interchange where Jimmy DeLoach Parkway currently intersects US 80/SR 26/SR17 at grade.				P.I. #: 0007259		
				TIP #: 2005-H-1		
		COUNTY: CHATHAM				
		PROJ. #: CSSTP-0007-00(259)				
		FUND: Z230*, Local*, Z240, HB 170				
		GDOT DISTRICT: 5				
TRAFFIC VOL. 2010 AADT: 17,760/10,860		2030: 30,650/29,280		CONG. DISTRICT: 1		
NO. OF LANES EXISTING: 6		PLANNED: 6		RC: CG		
LOCAL ROAD #:		STATE/US ROAD #: SR 26/US 80		LENGTH (MI): 1.1		
COMMENTS/REMARKS: The Concept Report was approved on April 17, 2008. VE study is complete. Environmental document was approved in May 2014. Right-of-way is programmed in FY 2015 with Z230, Z240 and local SPLOST funds. Utility phase is programmed in FY 2017 with local funds. Construction is scheduled in FY 2017 with state HB 170 funds. *\$4 million of federal Z230 funds and \$2 million of Z240 federal/state funds will be used for ROW. Local funds of \$1 million from SPLOST will be used to match the Z230 ROW grant. Additional \$1,700,000 local SPLOST funds will be used for the balance of the ROW costs.						
PROJECT PHASE	\$ SOURCE	FY 2015	FY 2016	FY 2017	FY 2018	TOTAL
PRELIM. ENGR.	Authorized	\$0	\$0	\$0	\$0	\$0
RIGHT-OF-WAY	Federal/Local*	\$8,700,000	\$0	\$0	\$0	\$8,700,000
UTILITY	Local	\$0	\$0	\$514,128	\$0	\$514,128
CONSTRUCTION	State	\$0	\$0	\$26,776,144	\$0	\$26,776,144
PROJECT COST		\$8,700,000	\$0	\$27,290,272	\$0	\$35,990,272
FEDERAL COST		\$5,600,000	\$0	\$0	\$0	\$5,600,000
STATE COST		\$400,000	\$0	\$26,776,144	\$0	\$27,176,144
LOCAL COST*		\$2,700,000	\$0	\$514,128	\$0	\$3,214,128

PROJECT LOCATION

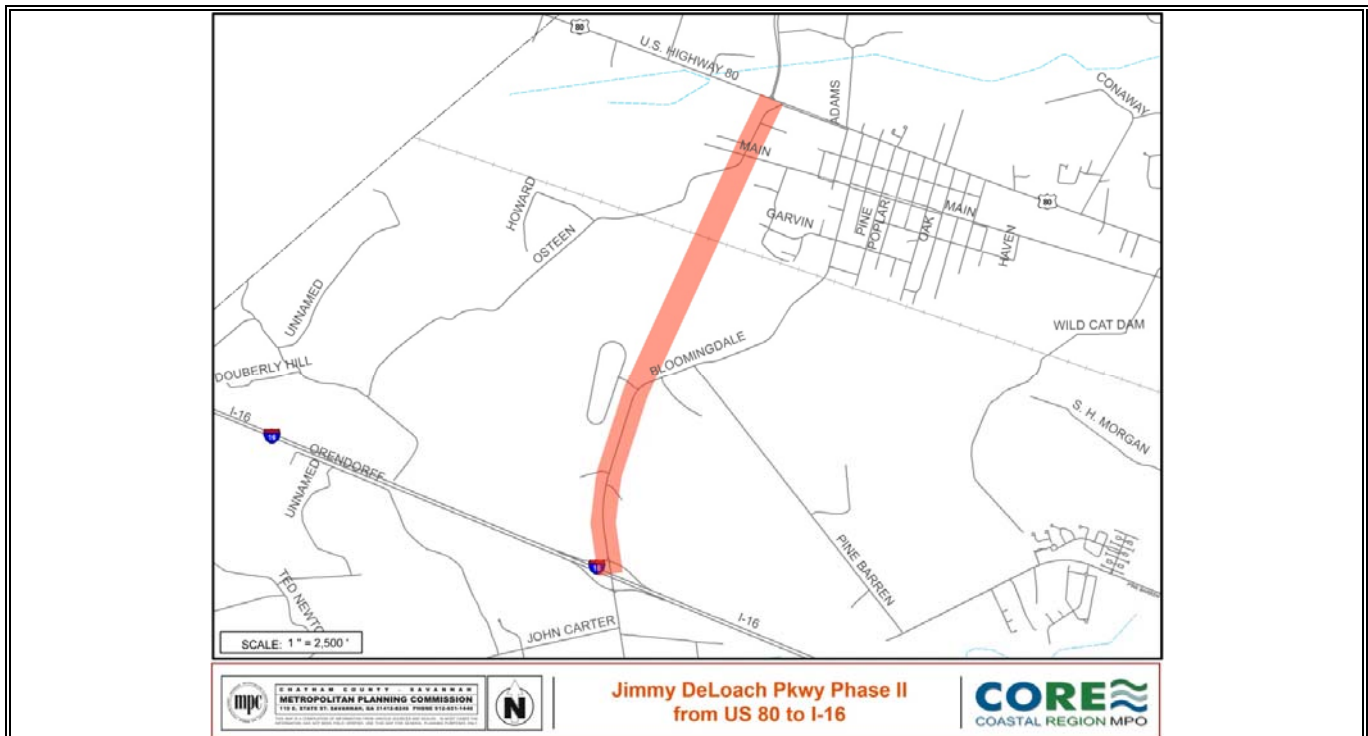


Current Project Page – PI# 522790

**COASTAL REGION METROPOLITAN PLANNING ORGANIZATION
FY 2015 - 2018 TRANSPORTATION IMPROVEMENT PROGRAM**

JIMMY DELOACH PARKWAY EXTENSION FM I-16 TO SR 26/US 80				P.I. #: 522790		
				TIP #: 94-H-02		
PROJECT DESCRIPTION: Widen and reconstruct to four lanes divided, Bloomingdale Road from I-16 to Pine Barren Road. Construct four lanes divided on new location from Pine Barren Road to SR 26/US 80 in Bloomingdale.				COUNTY: CHATHAM		
				PROJ. #: STP00-0218-01(001)		
				FUND: Z240, Local		
				GDOT DISTRICT: 5		
				CONG. DISTRICT: 1		
TRAFFIC VOL. 2009 AADT:	11,000	2029:	40,000	RC: CG		
NO. OF LANES EXISTING:	0	PLANNED:	4	LENGTH (MI): 2.55		
LOCAL ROAD #:		STATE/US ROAD #:	SR 17			
COMMENTS/REMARKS: This is a road project from the 1993 1% sales tax program. PE was authorized in 1997. The revised Concept Report was approved in January 2013. Environmental re-evaluation was approved in June 2014. Right-of-way was programmed in FY 2014 with Z230 funds and local SPLOST funds and the funds have been authorized. Utility phase is programmed in FY 2018 with local funds. Construction is scheduled in FY 2018 with Z240 funds.						
PROJECT PHASE	\$ SOURCE	FY 2015	FY 2016	FY 2017	FY 2018	TOTAL
PRELIM. ENGR.	Authorized	\$0	\$0	\$0	\$0	\$0
RIGHT-OF-WAY	Authorized	\$0	\$0	\$0	\$0	\$0
UTILITY	Local	\$0	\$0	\$0	\$22,082	\$22,082
CONSTRUCTION	Federal/State	\$0	\$0	\$0	\$24,549,344	\$24,549,344
PROJECT COST		\$0	\$0	\$0	\$24,571,426	\$24,571,426
FEDERAL COST		\$0	\$0	\$0	\$19,639,475	\$19,639,475
STATE COST		\$0	\$0	\$0	\$4,909,869	\$4,909,869
LOCAL COST*		\$0	\$0	\$0	\$22,082	\$22,082

PROJECT LOCATION

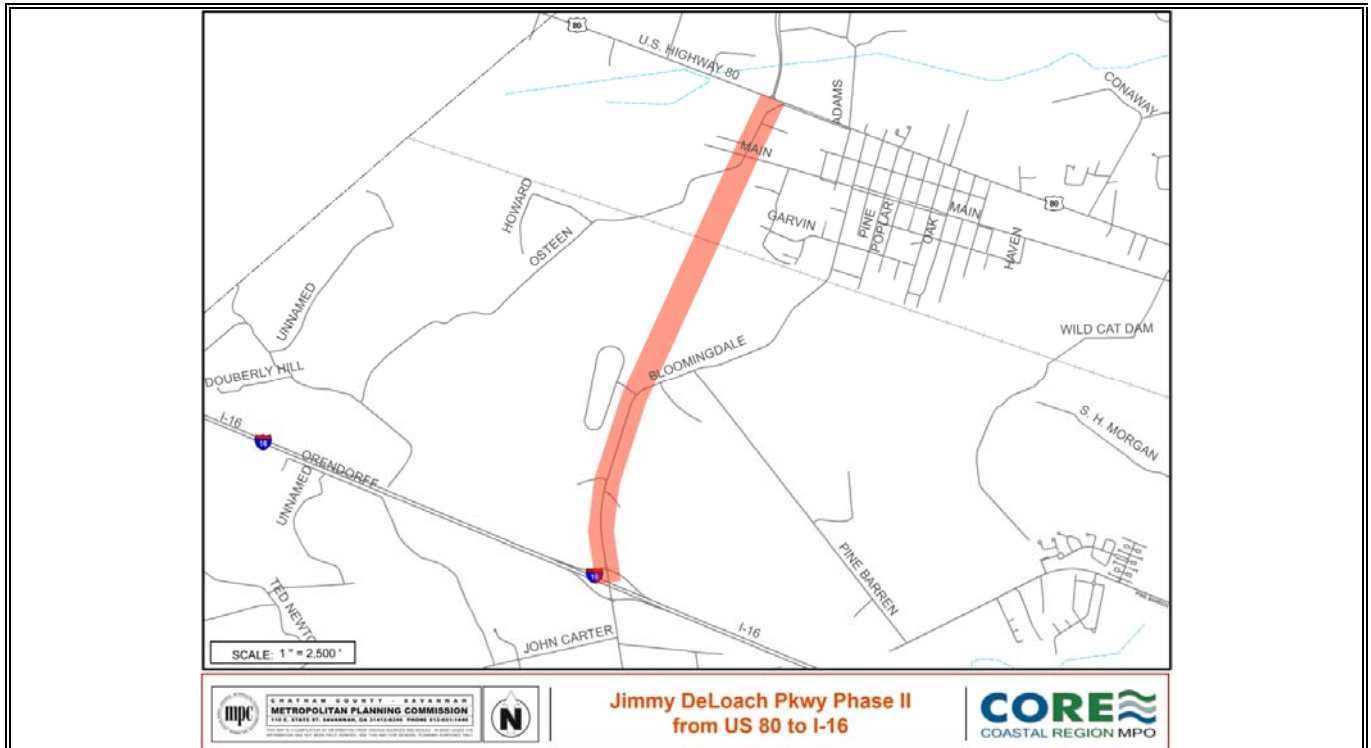


Revised Project Page – PI# 522790

**COASTAL REGION METROPOLITAN PLANNING ORGANIZATION
FY 2015 - 2018 TRANSPORTATION IMPROVEMENT PROGRAM**

JIMMY DELOACH PARKWAY EXTENSION FM I-16 TO SR 26/US 80 PROJECT DESCRIPTION: Widen and reconstruct to four lanes divided, Bloomingdale Road from I-16 to Pine Barren Road. Construct four lanes divided on new location from Pine Barren Road to SR 26/US 80 in Bloomingdale.				P.I. #: 522790		
				TIP #: 94-H-02		
		COUNTY: CHATHAM				
		PROJ. #: STP00-0218-01(001)				
		FUND: HB 170 , Local				
		GDOT DISTRICT: 5				
TRAFFIC VOL. 2009 AADT: 11,000		2029: 40,000		CONG. DISTRICT: 1		
NO. OF LANES EXISTING: 0		PLANNED: 4		RC: CG		
LOCAL ROAD #:		STATE/US ROAD #: SR 17		LENGTH (MI): 2.55		
COMMENTS/REMARKS: This is a road project from the 1993 1% sales tax program. PE was authorized in 1997. The revised Concept Report was approved in January 2013. Environmental re-evaluation was approved in June 2014. Right-of-way was programmed in FY 2014 with Z230 funds and local SPLOST funds and the funds have been authorized. Utility phase is programmed in FY 2017 with local funds. Construction is scheduled in FY 2017 with HB 170 funds.						
PROJECT PHASE	\$ SOURCE	FY 2015	FY 2016	FY 2017	FY 2018	TOTAL
PRELIM. ENGR.	Authorized	\$0	\$0	\$0	\$0	\$0
RIGHT-OF-WAY	Authorized	\$0	\$0	\$0	\$0	\$0
UTILITY	Local	\$0	\$0	\$154,000	\$0	\$154,000
CONSTRUCTION	State	\$0	\$0	\$26,306,555	\$0	\$26,306,555
PROJECT COST		\$0	\$0	\$26,460,555	\$0	\$26,460,555
FEDERAL COST		\$0	\$0	\$0	\$0	\$0
STATE COST		\$0	\$0	\$26,306,555	\$0	\$26,306,555
LOCAL COST*		\$0	\$0	\$154,000	\$0	\$154,000

PROJECT LOCATION



**Appendix B: 2040 MTP Addendum for June 2017 TIP Amendments
and Administrative Modifications**

Addendum to 2040 MTP													
2040 MTP Original					October 2014 Addendum			June 2016 Addendum			June 2017 Addendum		
PI #	DESCRIPTION	Phase	Current MTP Cost Band	Cost	Phase	New MTP Cost Band	New Cost	Phase	New MTP Cost Band	New Cost	Phase	New MTP Cost Band	New Cost
0007128	CR 787/Islands Expressway at Wilmington River/Bascule Bridge	ROW, CST	One (2015-2020)	\$45,019,917				ROW, CST	One (2015-2020)	\$35,134,465	ROW, UTL, CST	One (2015-2020)	\$56,480,599
0007259	CR 984/Jimmy DeLoach Pkwy @ SR 17 - Interchange (New Interchange at US 80)	ROW	One (2015-2020)	\$8,463,000	ROW	One (2015-2020)	\$8,700,000				ROW	One (2015-2020)	\$8,700,000
		CST	One (2015-2020)	\$18,142,432	CST	One (2015-2020)	\$18,142,432				UTL, CST	One (2015-2020)	\$27,290,272
522790	Jimmy DeLoach Parkway Extension from I-16 to SR 26/US 80	CST	One (2015-2020)	\$24,571,426							UTL, CST	One (2015-2020)	\$26,460,555

Appendix C: Public Involvement Materials

June 2017

PUBLIC NOTICE FOR MTP and TIP AMENDMENTS

The Coastal Region Metropolitan Planning Organization (CORE MPO), the transportation planning agency for the Savannah urbanized area, is requesting the public to review and provide comments on proposed amendments to the 2040 Metropolitan Transportation Plan (MTP) and FY 2015 – 2018 Transportation Improvement Program (TIP). The MTP evaluates transportation system performance and is a source of policies, projects and actions that implement community vision of transportation improvements needed to reach the community goals. The TIP is the short-term programming document that lists transportation improvement projects to receive funding in the next four years. Reports providing details of the proposed MTP and TIP amendments are available for review at the Live Oak public libraries, the Chatham County-Savannah Metropolitan Planning Commission (MPC) office, the MPC website at <http://www.thempc.org/Dept/Tran>, and other public review agencies. Any changes to the reports will be posted on the website.

The comment period starts on **June 13, 2017** and written comments on the proposed MTP and TIP amendments will be accepted until close of business on **June 27, 2017**. Please send your comments to Wykoda Wang, Metropolitan Planning Commission, 110 E. State Street, Savannah, GA 31401, or via email at wangw@thempc.org.

CORE MPO will host a public hearing for the proposed MTP amendments and a separate hearing for the proposed TIP amendments at the June 2017 CORE MPO Board meeting. Meeting time and location are listed below:

CORE MPO Board Meeting

June 28, 2017

10:00 a.m.

**MPC Arthur A. Mendonsa Hearing Room
112 East State Street, Savannah, GA 31401**

For a complete list of public review agencies or additional information regarding the proposed MTP and TIP amendments, please call (912) 651-1466.

Disclaimer: The Chatham County-Savannah Metropolitan Planning Commission (MPC) and Coastal Region Metropolitan Planning Organization (CORE MPO) are committed to the principle of affirmative action and prohibit discrimination against otherwise qualified persons on the basis of race, color, religion, national origin, age, physical or mental disability, and where applicable, sex (including gender identity and expression), marital status, familial status, parental status, religion, sexual orientation, political beliefs, genetic information, reprisal, or because all or part of an individual's income is derived from any public assistance program in its recruitment, employment, facility and program accessibility or services. MPC and CORE MPO are committed to complying with and enforcing the provisions of the Title VI of the Civil Rights Act and other federal and state non-discrimination authorities. CORE MPO is also committed to taking positive and realistic affirmative steps to ensure the protection of rights and opportunities for all persons affected by its plans and programs.

From: Delgadillo Canizares, Marlene V. [mailto:mcanizares@dot.ga.gov]
Sent: Monday, June 5, 2017 8:12 AM
To: Wykoda Wang <wangw@thempc.org>
Cc: Mann, Scott <smann@dot.ga.gov>; Eastin, William <weastin@dot.ga.gov>; McQueen, Thomas <tmcqueen@dot.ga.gov>
Subject: Amendment Request - PI 0007128 (CR 787/Islands Expressway @ Wilmington River/Bascule Bridge)

Good Morning Wykoda:

Following up on our phone call, the Planning Office requests an amendment to the 2040 Total Mobility Plan (MTP) and FY 2015 – FY 2018 Transportation Improvement Plan (TIP). Please update the funding amount and fiscal year for the CST phase for the project described below:

PI 0007128 (CR 787/Islands Expressway @ Wilmington River/Bascule Bridge)

Work Type: Bridges

County: Chatham

Phase	Old Amount	New Amount	Fund Code	Old Funding Year	New Funding Year
Construction	\$ 35,014,548.44	\$ 56,038,682.15	Z001	2017	2018

All other aspects of the project will remain the same. Thank you for your help and let us know if you have any questions.

Sincerely,
 Vivian

Vivian Canizares

Planner II —Office of Planning
 Georgia Department of Transportation
 600 West Peachtree Street, Atlanta GA 30308

From: Delgadillo Canizares, Marlene V. [mailto:mcanizares@dot.ga.gov]
Sent: Monday, June 5, 2017 3:43 PM
To: Wykoda Wang <wangw@thempc.org>
Cc: Eastin, William <weastin@dot.ga.gov>; McQueen, Thomas <tmcqueen@dot.ga.gov>; Nathaniel Panther <NPanther@chathamcounty.org>
Subject: RE: Amendment Request - PI 0007128 (CR 787/Islands Expressway @ Wilmington River/Bascule Bridge)

Wykoda,

The Office of Planning is requesting an amendment for PI 0007128 because it is scheduled for letting on August, 2017. In other words, we would like to make sure we will have the updated cost in the FY 2015-2018 TIP before August, 2017.

As you are aware, the TIP is included by reference in the STIP; both documents need the approval of the MPO and the Governor which may occur between July and September (See 23 CFR 450.328 “TIP revisions and relationship with the STIP”).

We would like to thank you for your cooperation and as always, let us know how we may assist you.
Vivian

From: Delgadillo Canizares, Marlene V. [<mailto:mcanizares@dot.ga.gov>]
Sent: Tuesday, June 20, 2017 8:55 AM
To: Wykoda Wang <wangw@thempc.org>
Cc: Eastin, William <weastin@dot.ga.gov>
Subject: Jimmy DeLoach Pkwy projects

Wykoda:

It's an error in the system and we do apologize. We have informed our IT department and asked them to show the correct amounts. In the meantime:

PI 0007259 JIMMY DELOACH PARKWAY @ SR 17/SR 26 - INTERCHANGE

PHASE	COST (\$)	FUND	STATUS	DATE AUTH
CST	26,776,143.82	HB170	AUTHORIZED	JUNE 2017
UTL	514,128.31	LOC	AUTHORIZED	JUNE 2017

PI 522790- JIMMY DELOACH PARKWAY EXTENSION FM I-16 TO SR 26/US 80

PHASE	COST (\$)	FUND	STATUS	DATE AUTH
CST	26,306,554.76	HB170	AUTHORIZED	JUNE 2017
UTL	154,000	LOC	AUTHORIZED	JUNE 2017

Thanks so much!