



CAMBRIDGE
SYSTEMATICS

CORE MPO REGIONAL FREIGHT TRANSPORTATION PLAN UPDATE

*Economic Development & Freight
Advisory Committee (EDFAC) Meeting*

presented to

*Coastal Region Metropolitan Planning
Organization (CORE MPO)*

presented by

*Cambridge Systematics, Inc.
with AECOM and Symbioscity*



June 16, 2022

AGENDA

Introductions

Study Overview

What has Changed

Draft Vision, Goals, and Objectives

Schedule and Next Steps

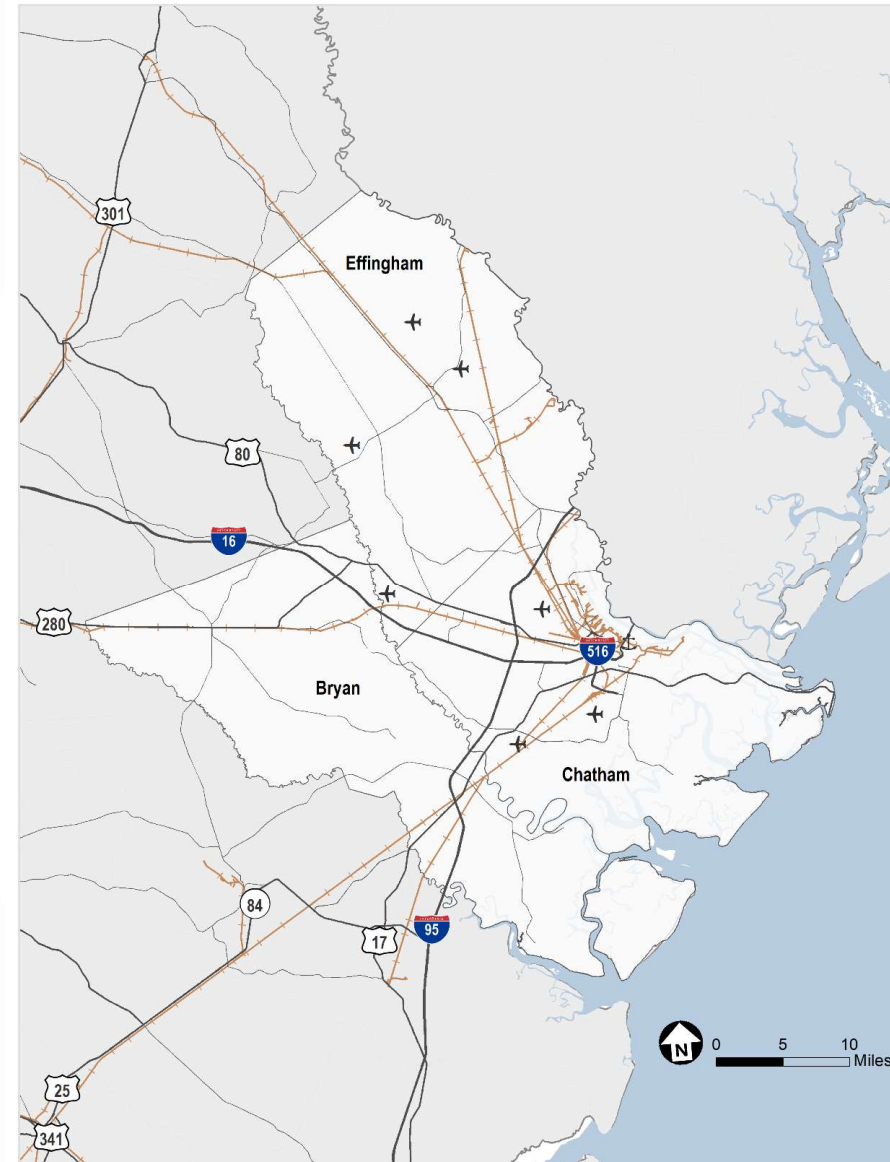
Web



- 1 Go to www.menti.com
- 2 Use the code 7417 7315

PURPOSE

- Purpose of today's meeting
 - » Meet the team
 - » Provide an overview of the study and key technical tasks
 - » How the EDFAC can help
 - What has changed
 - Vision, goals, and objectives
 - Data and information



CONSULTANT TEAM



CHRIS LINDSEY | *Project Manager (CS)*



MIKE WILLIAMSON | *Principal in Charge (CS)*



DENISE GRABOWSKI |
Outreach Lead (SYMBIOSCITY)



CARLOS ESPINDOLA | *Senior Technical Advisor (AECOM)*



STUDY OVERVIEW

KEY TECHNICAL TASKS



**Project Management & Coordination/
Stakeholder Outreach**

**Freight Needs Assessment
and Analysis**



Land Use Assessment

**Economic Development
and Market Assessment**



**Environmental and Community
Impact Scan and Analysis**

**Recommendations for
Future Land Uses**



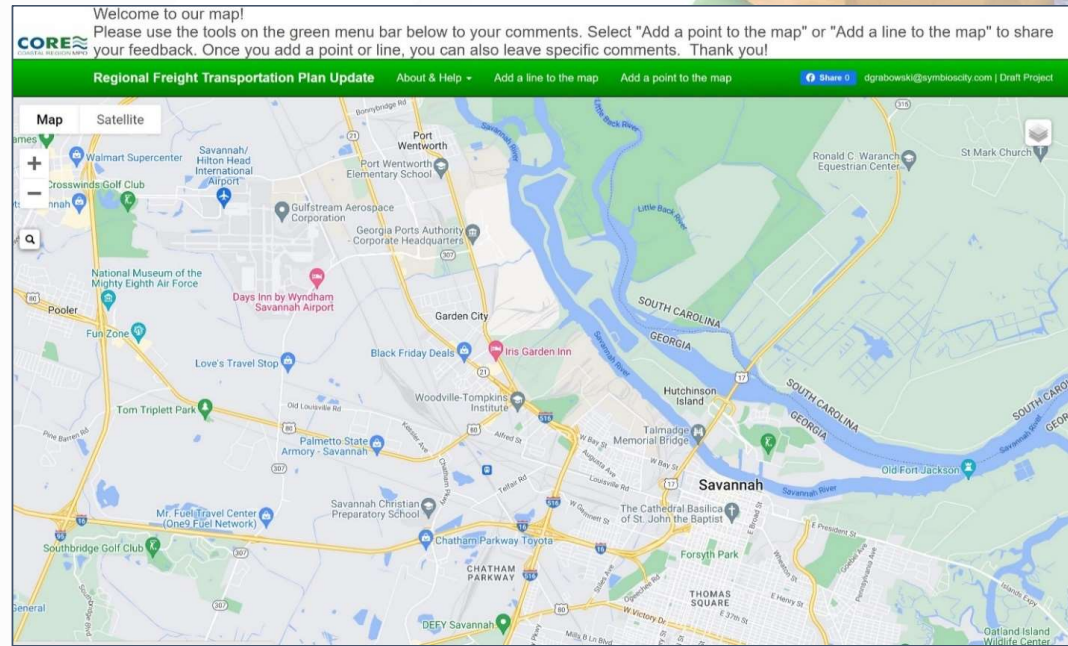
Final Recommendations

Final Report



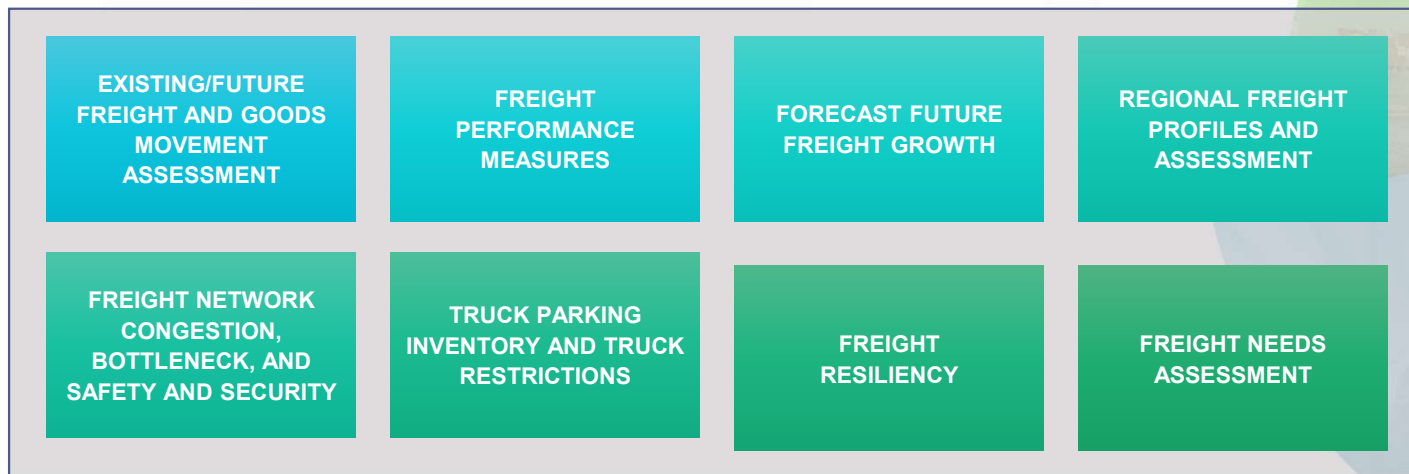
STAKEHOLDER OUTREACH

- Stakeholder survey with interactive mapping
- Virtual forums
- Dedicated page on CORE MPO website
- Direct outreach to key stakeholders
 - » Georgia Ports Authority, CSX, Norfolk Southern, others?
 - » Who else should we be speaking to?



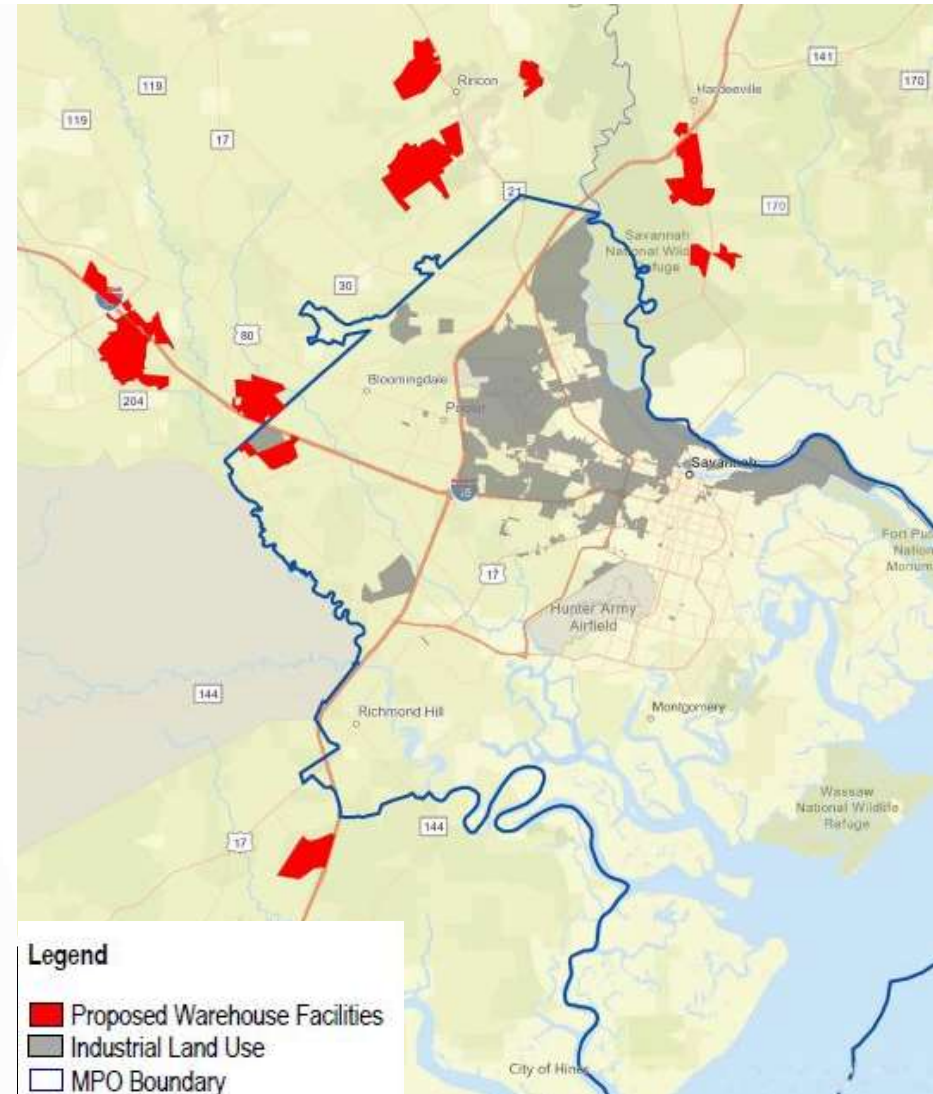
FREIGHT NEEDS ASSESSMENT AND ANALYSIS

- 8 specific subtasks that collectively describe network conditions, performance, and needs



LAND USE ASSESSMENT & ANALYSIS

- Analysis of Existing Land Use Policies and Local Decision-Making
 - » Assess impacts of land use on freight
 - » Identify land for future freight-centric growth
 - » Recommend best practices
- Assessment of Freight Impact on Land Use
 - » Impact of current and future freight development



ECONOMIC DEVELOPMENT AND MARKET ASSESSMENT

- Analyze the region's freight-intensive industry sectors
- Examine the economic relationships with other regions
- Identify and assess the impacts of trends in the national and international economy on the region's freight industry
 - » Federal trade policies and initiatives
 - » E-commerce
 - » Global supply chain disruptions
 - » Technological advances such as vehicle electrification



ENVIRONMENTAL AND COMMUNITY IMPACT SCAN AND ANALYSIS

- Characterize the impacts of goods movement on the environment and community.
- Conduct freight equity analysis to describe how the impacts vary across the region

USDOT Equity Objectives



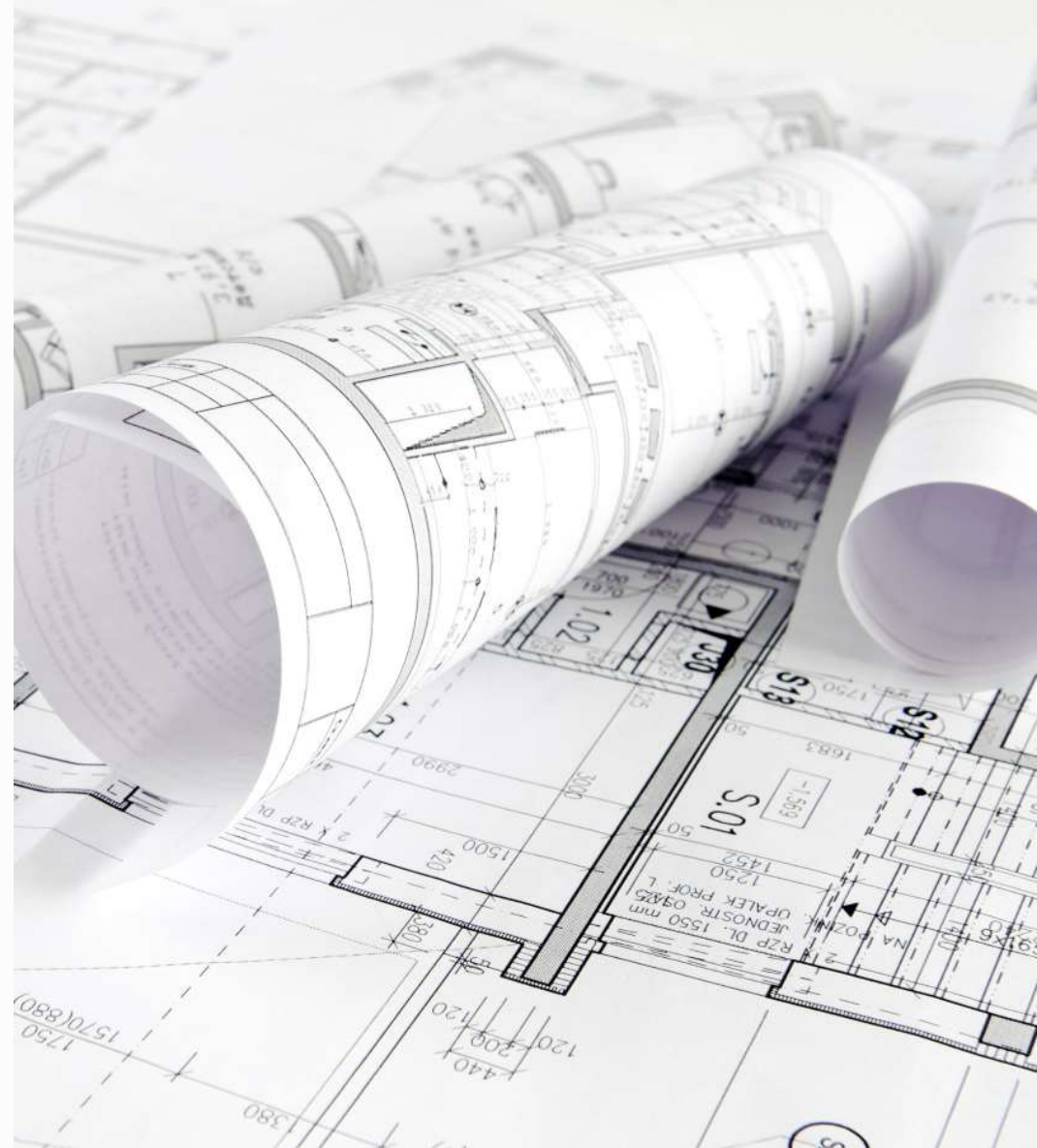
Source: USDOT, Justice40 Stakeholder Meeting, 11/16/2021.

RECOMMENDATIONS

- Comprehensive set of Policy and Program, Land Use, and Infrastructure recommendations to improve performance, reduce negative impacts, and provide economic benefits
- Examples include
 - » Policies and Programs: Support for anticipated and desired freight-related economic development
 - » Land Use: Preservation of land for future freight-centric growth
 - » Infrastructure: Bottleneck reductions, improved access to truck parking

FINAL REPORT

- Describe how strategies were developed, evaluated, and prioritized
- Outline implementation steps for incorporation into the Metropolitan Transportation Plan (MTP) and Transportation Improvement Program (TIP)
- Provide a strategic blueprint for the future of freight mobility in the region and preserving and enhancing economic competitiveness





WHAT HAS CHANGED?

KEY CHANGES SINCE 2016 REGIONAL FREIGHT TRANSPORTATION PLAN

- Completed and Planned Infrastructure Investments
 - » Completion of Savannah Harbor Expansion Project (SHEP)
 - » Mason Mega Rail Yard
 - » 16@95 Improvement Projects
- Land Use and Development
 - » Planned Hyundai Motor Co. development of Bryan County Megasite
- Federal Transportation Legislation and Planning Guidance
 - » Infrastructure Investment and Jobs Act (IIJA)
 - » Justice40 Initiative
- Regional and Statewide Freight Planning
 - » SR 21 Access Management Study
 - » SR 307 Corridor Study
 - » State Freight Plan Update
 - » State Rail Plan
 - » Coastal Empire Study
 - » Effingham County Transportation Master Plan



Technical Memorandum

CORE MPO Freight Study – Final Report

Prepared by:

**CDM
Smith**

December 2015

Go to www.menti.com and use the code 7417 7315

**What else has changed since the last plan was completed?
What other trends or factors should we be aware of?**

 Mentimeter



OPPORTUNITIES FOR THE 2022 RFTP UPDATE

- The 2016 RFTP laid the foundation for freight planning in the region
 - » Detailed land use and infrastructure recommendations
- Beyond updating the existing plan, this update provides an opportunity to enhance the region's freight program
 - » Implementation strategies
 - » Equity
 - » Funding and grant opportunities
 - » Truck parking and other state and federal freight planning priorities



Go to www.menti.com and use the code 7417 7315

What are the key differentiators for this plan? How do you define success for this plan?

 Mentimeter



The background of the slide features a collage of four images related to freight transport, arranged in a circular pattern. The top-left image shows a white van. The top-right image shows a large container ship on a river. The bottom-left image shows a train. The bottom-right image shows a port crane. The central text is overlaid on a blue banner.

DRAFT FREIGHT VISION, GOALS, & OBJECTIVES

PROVIDE DIRECTION FOR THE 2022 RFTP UPDATE

- Draft freight vision, goals, and objectives linked to Mobility 2045
- As Mobility 2050 is underway, they will be revised as needed for consistency



DRAFT FREIGHT VISION

MOBILITY 2045 VISION

The overall goal of the Mobility 2045 Plan is to continue moving the planning process beyond a singular focus on moving motor vehicles and consider transportation issues from a comprehensive perspective that incorporates community values, needs, land use and modal alternatives

DRAFT REGIONAL FREIGHT TRANSPORTATION PLAN VISION

The vision for the Regional Freight Transportation Plan is to promote sustainable economic growth throughout the region by ensuring quality access and connectivity and safe and efficient mobility of people and goods on a shared multimodal network.



Go to www.menti.com and use the code 7417 7315

Does this statement capture the right components for the region's freight vision? What's missing?

 Mentimeter

DRAFT FREIGHT GOALS

Mobility 2045 Goals



Safety and Security

Provide a safe, secure and resilient transportation system for all users



State of Good Repair

Maintain a state of good repair for all transportation systems



Accessibility, Mobility and Connectivity

Ensure and increase the accessibility, mobility and connectivity options available to people and freight and ensure the integration of modes where appropriate



System Performance

Provide an efficient, reliable, multi-modal transportation system that supports economic competitiveness and enhances tourism



Intergovernmental Coordination

Make wise use of public funds through coordination and a performance based planning process



Environment & Quality of Life

Ensure a healthy sustainable environment through the compatible integration of land use and transportation while taking into consideration the impact of transportation including that of storm water

Draft Regional Freight Transportation Plan Goals



Safety and Security

- Provide a safe, secure, and resilient multimodal freight system



State of Good Repair

- Maintain a state of good repair of infrastructure critical to multimodal freight movement



Accessibility, Mobility, and Connectivity

- Improve connectivity to regional freight and industrial hubs, connectivity between freight modes, and reduce barriers to mobility



System Performance

- Improve the reliability of freight movements to improve efficiency and support economic competitiveness



Intergovernmental Coordination

- Build regional and statewide freight partnerships to help maximize freight funding opportunities and the transportation and economic development impacts of the investments brought by those funds



Environment and Quality of Life

- Minimize adverse impacts of freight operations on communities and the environment while increasing community awareness of freight's importance



Go to www.menti.com and use the code 7417 7315

Are these the right goals? Is anything missing?

 Mentimeter

DRAFT FREIGHT OBJECTIVES

Safety and Security

- Reduce the number and rate of fatalities and injuries involving freight movements.
- Improve access to truck parking in the region.

State of Good Repair

- Maintain freight assets at acceptable conditions.

Accessibility, Mobility, and Connectivity

- Reduce the number and magnitude of freight bottlenecks.
- Improve connections between freight modes.

System Performance

- Provide reliable and predictable travel times along freight corridors.

Intergovernmental Coordination

- Facilitate partnerships between CORE MPO, GDOT, Georgia Ports Authority, and city and county governments.

Environment and Quality of Life

- Prevent (where possible) and reduce disproportionate negative freight impacts to environmental justice communities.
- Reduce emissions and other environmental impacts associated with freight movements.



Go to www.menti.com and use the code 7417 7315

Are these the right objectives? Is anything missing?

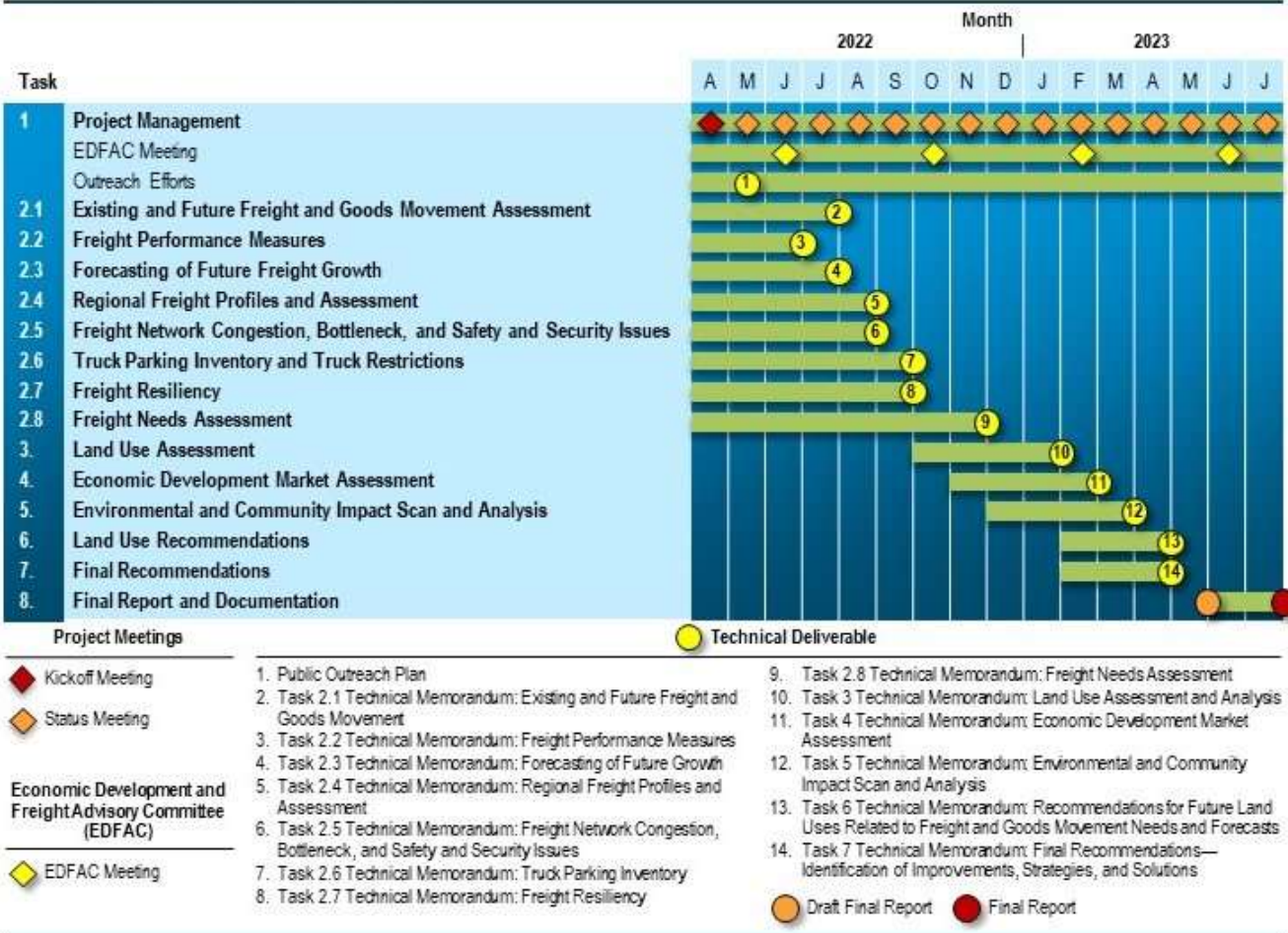
 Mentimeter





SCHEDULE AND NEXT STEPS

SCHEDULE



NEXT STEPS

➤ Stakeholder Outreach

- » Online survey – tentative early July 2022 launch
 - Link will be sent to EDFAC, forward to contacts
- » Virtual Forum #1 – November 2022

➤ Freight Needs Assessment

- » Existing and Future Freight and Goods Movement Assessment
- » Freight Performance Measures
- » Forecasting Future Freight Growth

➤ Provide update to EDFAC at October 2022 meeting

➤ Project team will reach out to the EDFAC for data and information



CONTACT INFORMATION

Wykoda Wang, CORE MPO/MPC Project Manager
wangw@thempc.org

Chris Lindsey, Consultant Project Manager
clindsey@camsys.com

