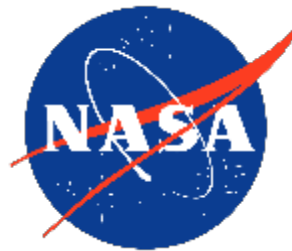
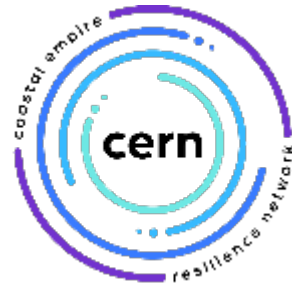
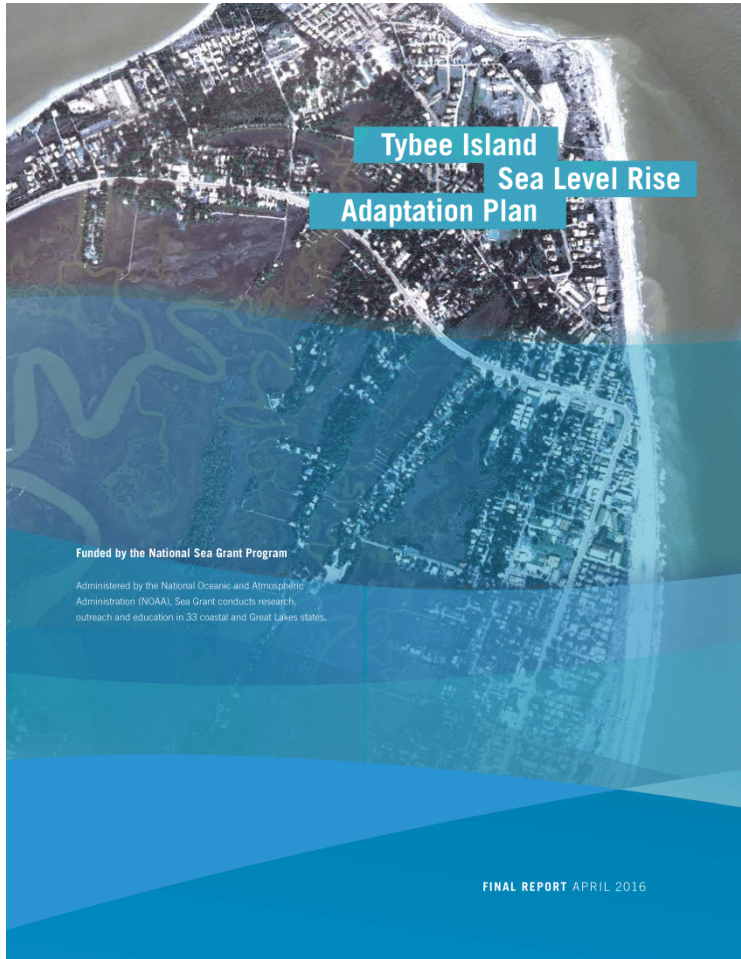




# RESILIENCE IN THE COASTAL EMPIRE

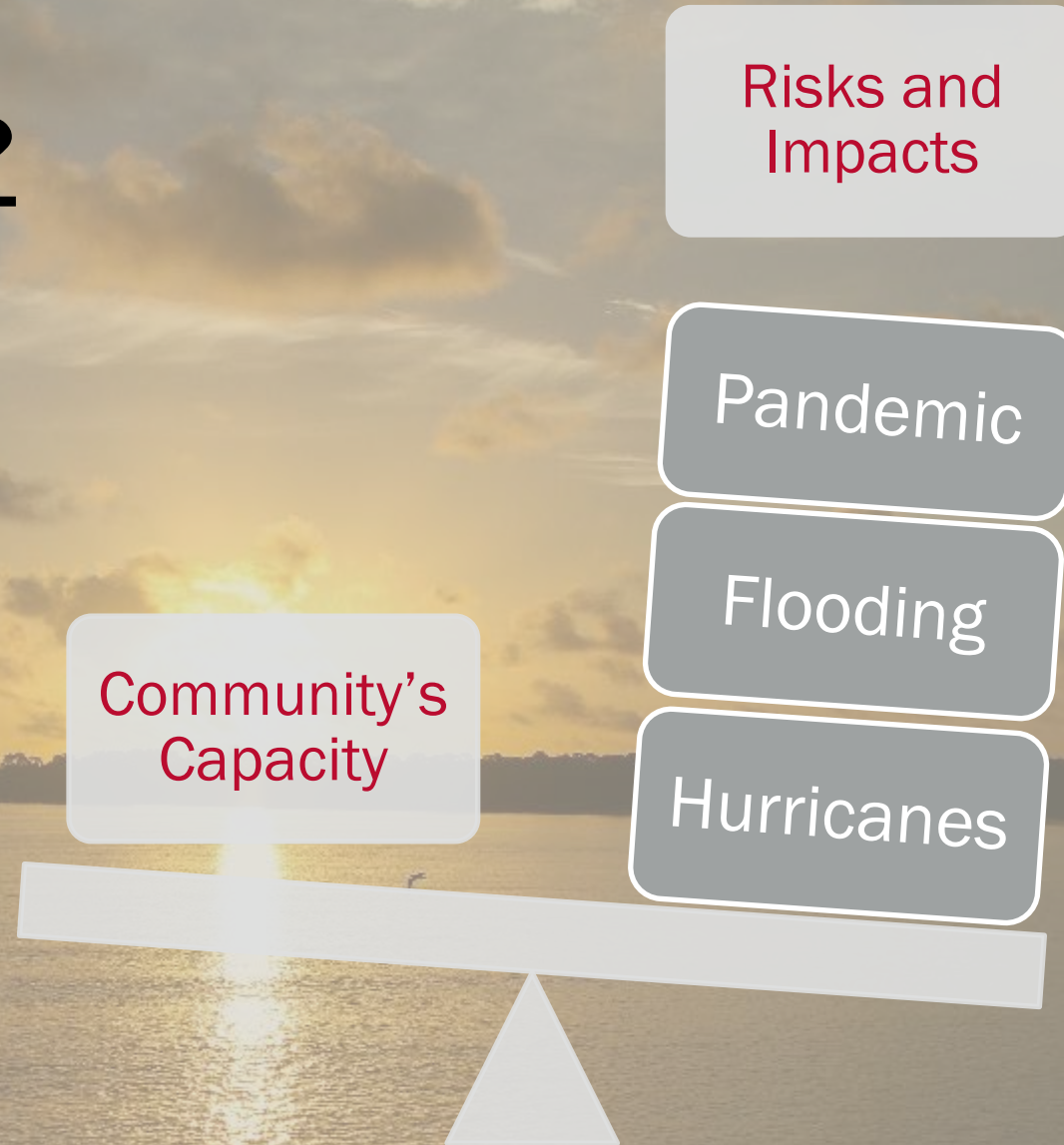
Jill Gambill  
Coastal Resilience Specialist and Public Service Faculty

# Introduction



On Tybee Island with my 2021-22 interns, Lauren Sullivan and Emilie Saksvig, public health graduate students at Emory University

# What is Resilience?



# Shocks

*Sudden immediate crisis or disaster*

Hurricanes	Oil spill
Heat wave	Terrorism attack
Floods	Tornadoes
Drought	War
Fires	
Disease outbreak	
Ice storm	
Market crash	
Mudslides	

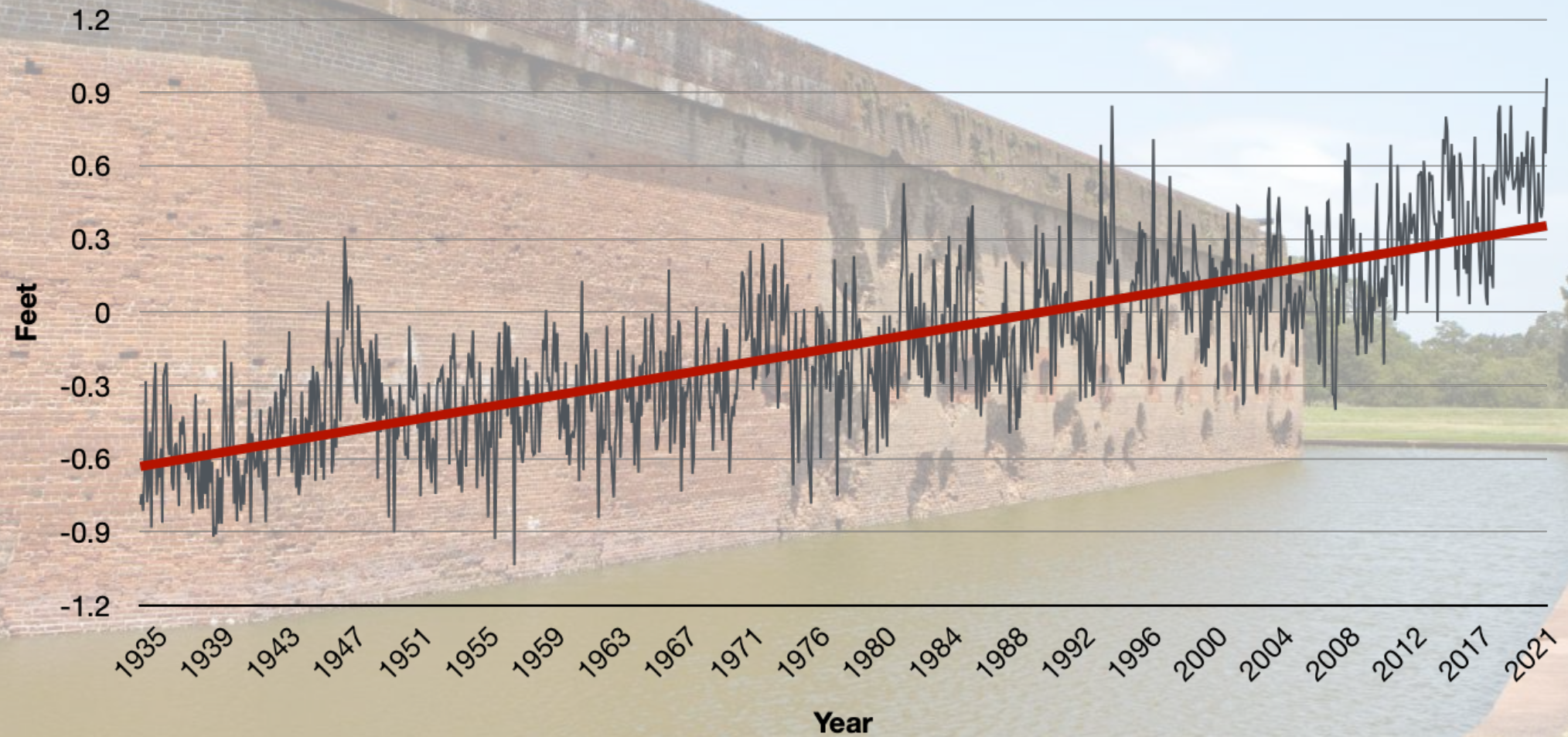
# Stressors

*Slower moving, longer term hazard*

- Climate change
- Sea level rise
- Rising temperatures
- Water shortages
- Economic depression
- Endemic violence
- High unemployment
- Overtaxed infrastructure
- Population growth
- Social unrest/conflict

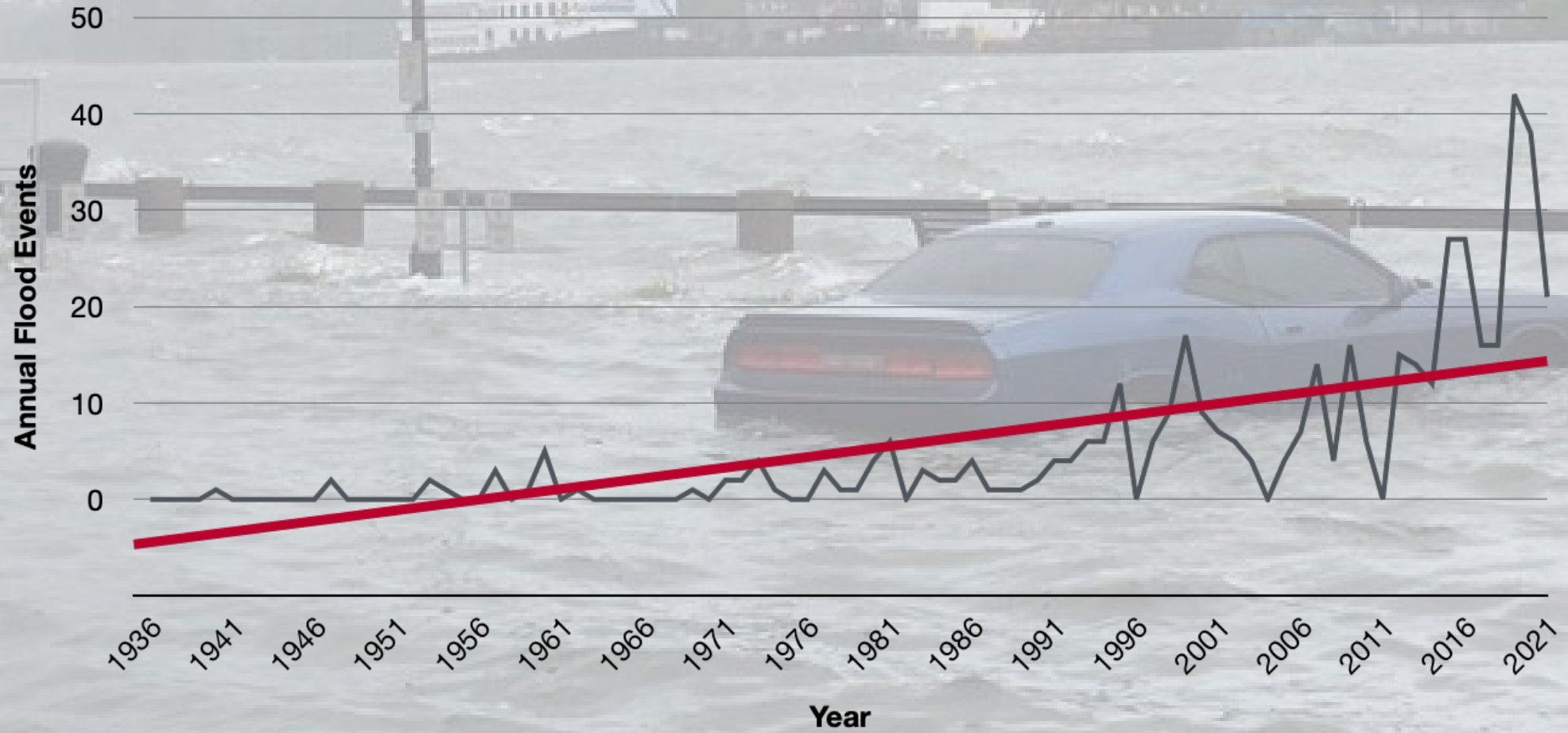


# Relative Sea Level Trend Fort Pulaski Tide Gauge 1935-2021



Data: NOAA Tides and Currents

# Annual Flood Events Fort Pulaski Tide Gauge 1936-2021



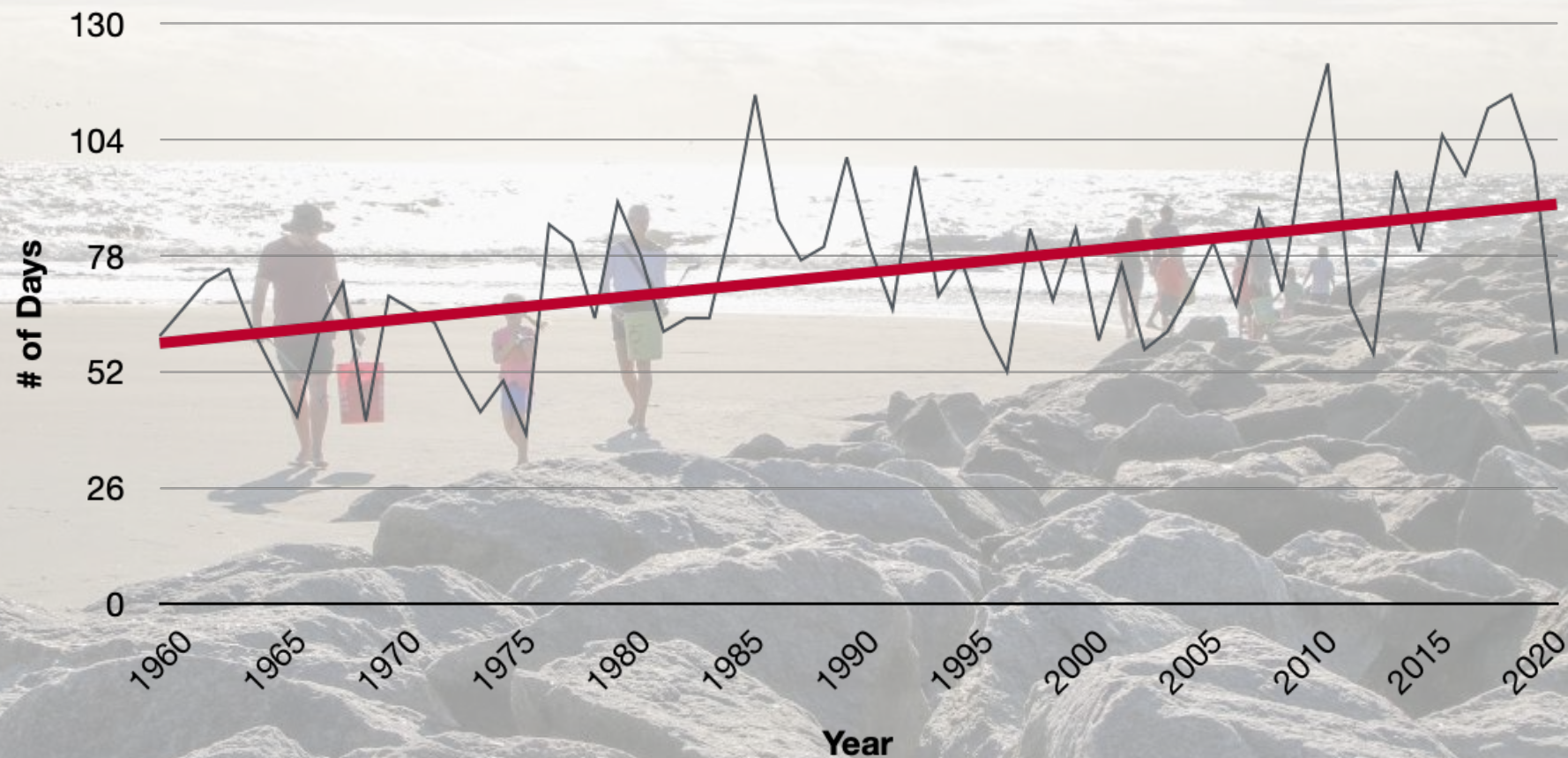
Data: National Weather Service Charleston

Photo credit: WTOC

# Compounding Impacts



# Number of Days Above 90° F Savannah Area 1960-2021



Data: National Weather Service Charleston



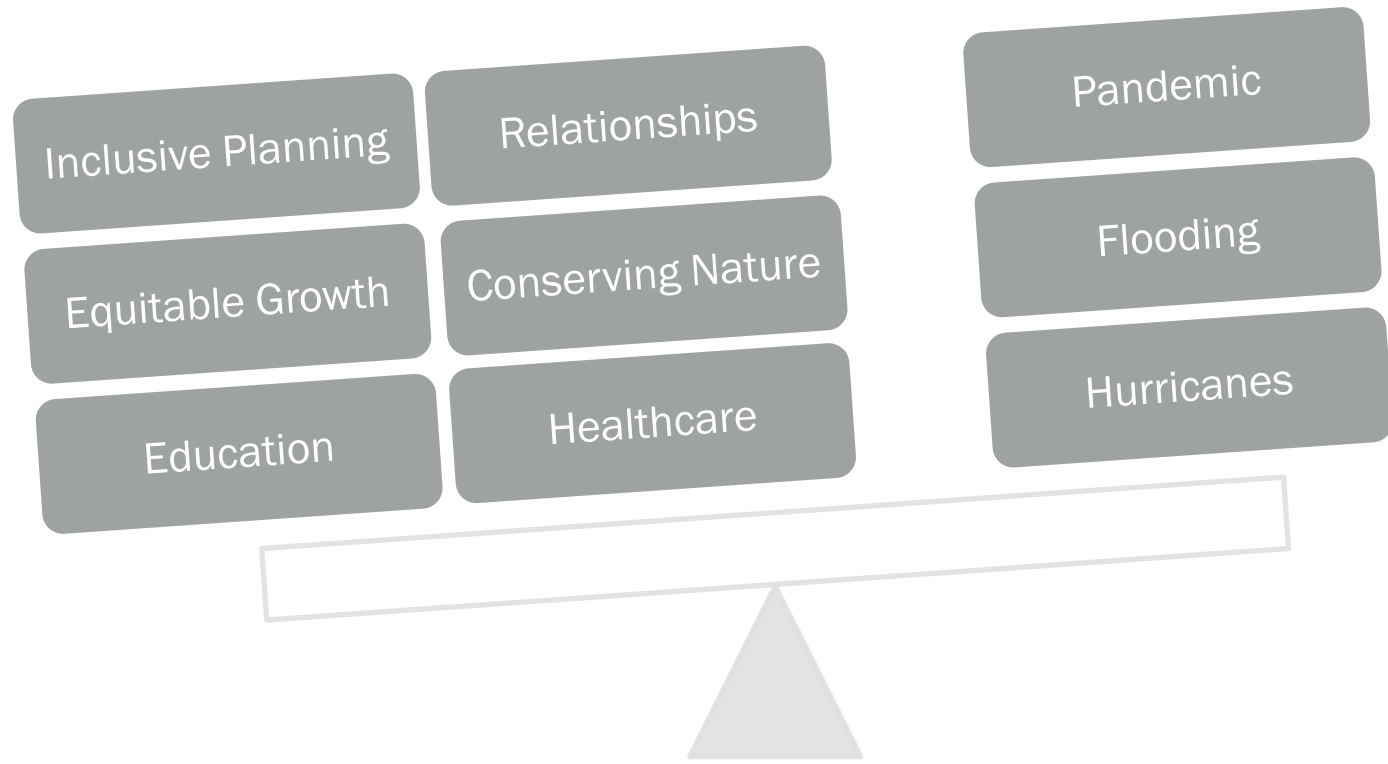
# Cascading Events



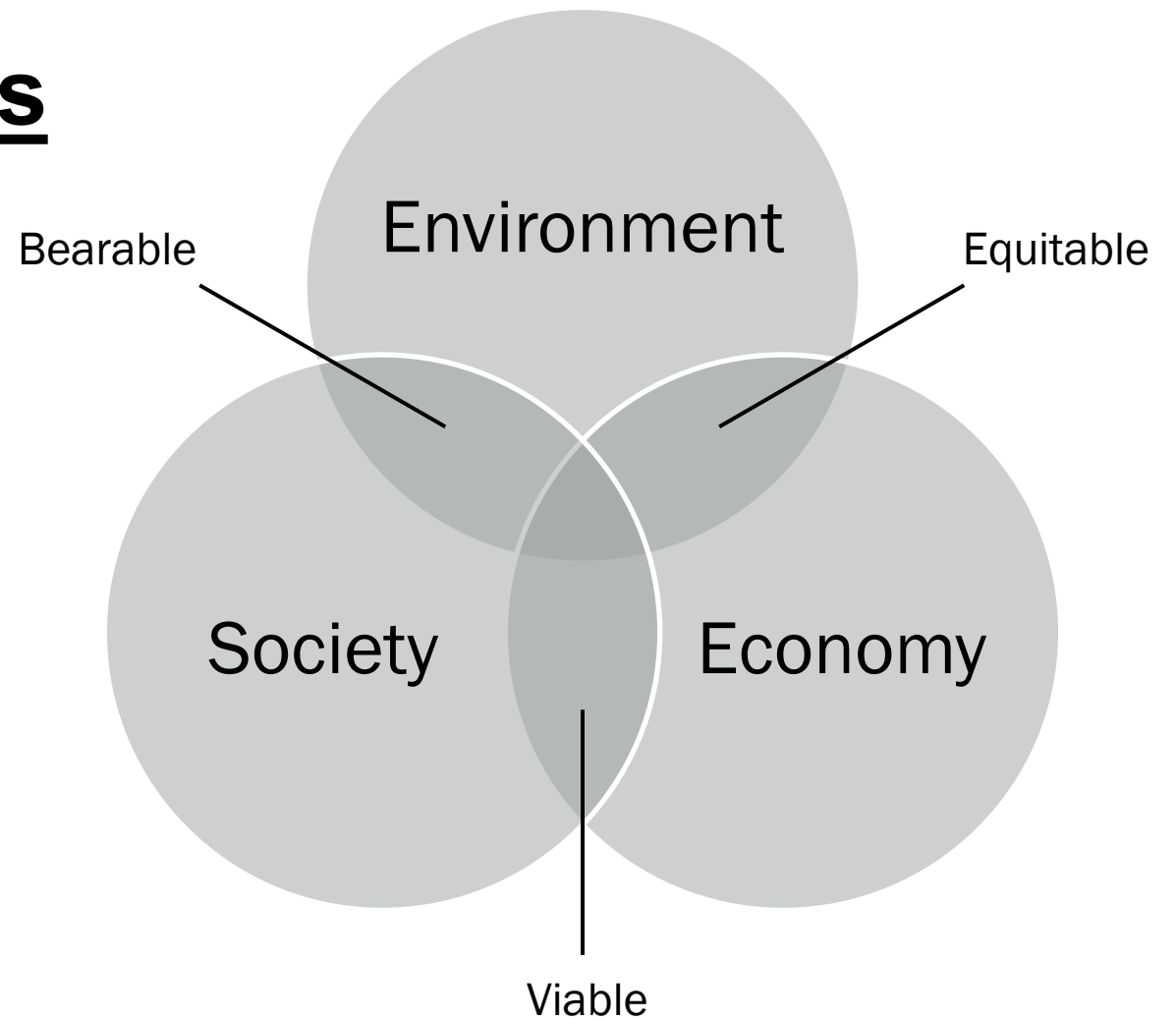
# What is Resilience?

Community's  
Capacity

Risks and  
Impacts



# Resilience Frameworks

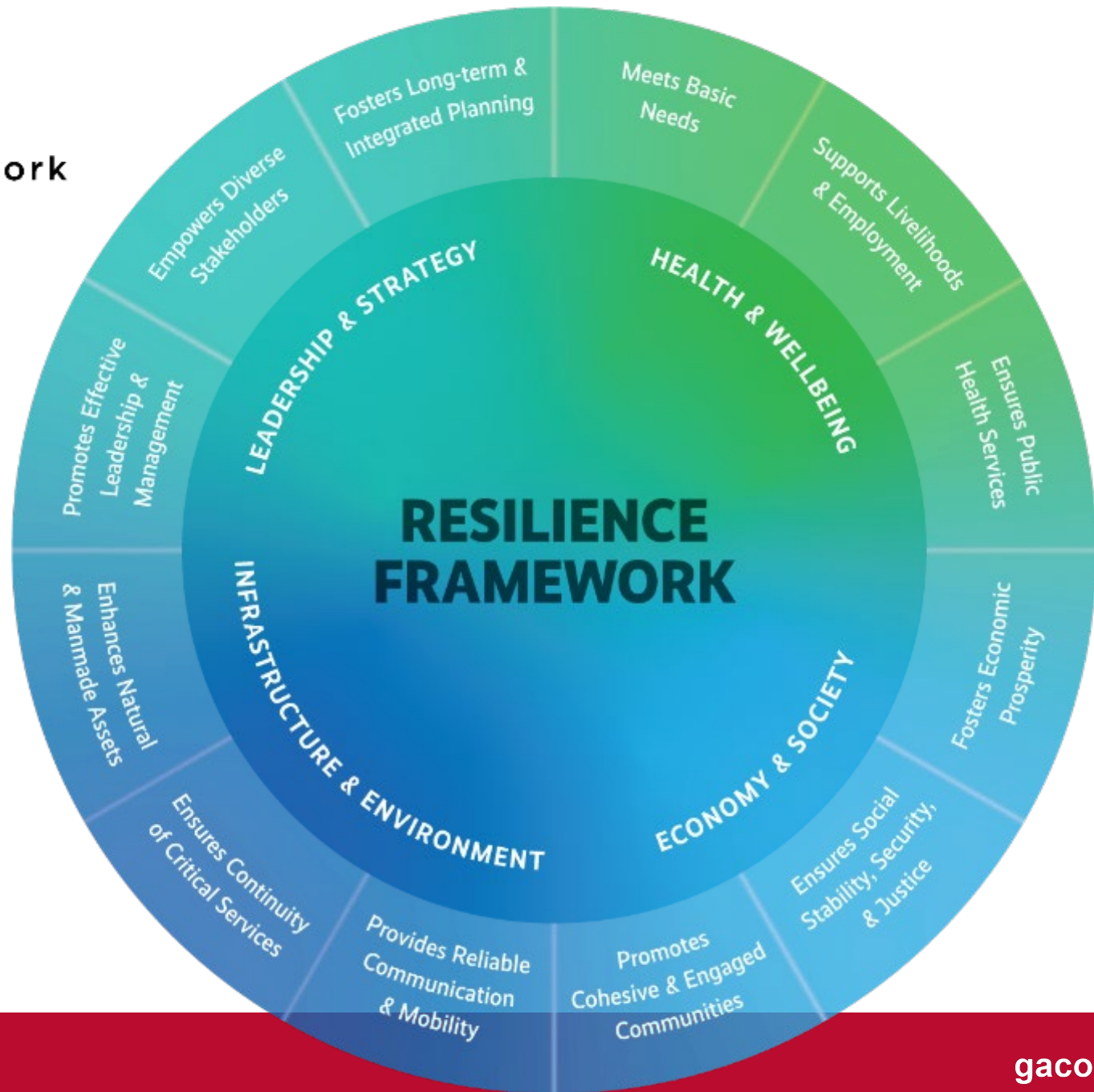


Triple Bottom Line





**cern** coastal empire  
resilience network



Marine Extension and  
Georgia Sea Grant  
UNIVERSITY OF GEORGIA



[gacoast.uga.edu](http://gacoast.uga.edu)

# Resilience in the Coastal Empire



# Questions?

[jgambill@uga.edu](mailto:jgambill@uga.edu)

CONNECT WITH US:



[@GACoast.UGA](https://www.facebook.com/GACoast.UGA)



[@GAcoast\\_UGA](https://twitter.com/GAcoast_UGA)



[@gacoast.uga](https://www.instagram.com/gacoast.uga)



[gacoast.uga.edu](https://gacoast.uga.edu)