

CHATHAM COUNTY- SAVANNAH METROPOLITAN PLANNING COMMISSION



CHATHAM COUNTY SERVICE DELIVERY STRATEGY (SDS) UPDATE



Melanie Wilson, Executive Director

Jackie Jackson, Advance Planning & Special Projects Director



2022 SERVICE DELIVERY STRATEGY (SDS) UPDATE

Local governments must revise their Service Delivery Strategy and submit it to DCA for verification when any one of the following conditions occur:

- In conjunction with an update of a county's comprehensive plan;
- Whenever the service delivery or revenue distribution arrangements are changed (e.g., whenever the local governments within the County decide to change how a service is provided or funded) or;
- Whenever the County and the Municipalities in the County agree it is appropriate to do so.

Without a Service Delivery Strategy verified by DCA to comply with applicable requirements, a local government or respective authorities are ineligible to receive any state permits or financial assistance. In addition, any local projects that are not consistent with the strategy will not receive any state permits or financial assistance.



2022 SERVICE DELIVERY STRATEGY (SDS) UPDATE

Without a Service Delivery Strategy verified by DCA, a local government is ineligible to receive any state-administered funding, grants, loans and permits.

This includes:

- GDOT LMIG grants
- City-County road contracts
- GEFA water and sewer loans
- Recreation grants
- CDBG grants

This includes GA EPD issued:

- Water withdrawal permits
- Wastewater treatment permits
- Solid waste disposal facility permits

In addition, any local projects that are not consistent with the Strategy will not receive any state permits or financial assistance.

Canals and Municipal Ownership
in Chatham County
July 8, 2016

The SDS agreement to serve an area does not preclude said municipality from requiring annexation.

Water Service Areas
in Chatham County
July 8, 2016

The SDS agreement to serve an area does not preclude said municipality from requiring annexation.

Legend

- Municipal
- Non-Municipal
- Water
- Sewer
- Solid Waste
- Other





INCLUDED SERVICES



Public Safety

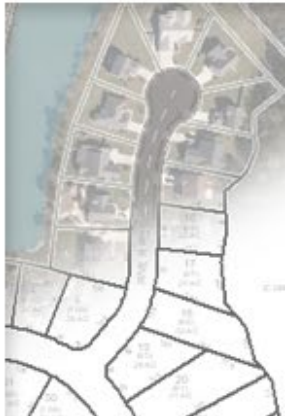
- Animal Control
- Communications (Broadband, Fiber, and Radio Systems)
- Emergency Management
- Emergency Medical Services
- Fire Protection
- Hazardous Materials
- Health Services (Hospital Coverage)
- Police Protection

Public Works

- New Road Construction
- Refuse Collection/Disposal
- Road Maintenance
- Road Paving
- Road Right-of-Way Mowing
- Sewage Collection/Treatment
- Solid Waste Collection
- Stormwater Management
- Street Lighting
- Street Sweeping
- Traffic Control
- Water Supply / Distribution

Criminal Justice

- Court Systems
- Jail
- Legal Defense (Chatham County, Tybee Island, Port Wentworth)





INCLUDED SERVICES



Transportation	General Services	Housing & Development
<ul style="list-style-type: none">• Airport• Public Transportation/ Bus Service	<ul style="list-style-type: none">• Cemeteries (Savannah and Pooler)• Libraries• Mosquito Control• Planning• Purchasing• Tax Billing & Collecting	<ul style="list-style-type: none">• Annexation/Boundaries• Building Inspection• Code Enforcement• Historic Preservation• Homelessness• Housing





INCLUDED SERVICES



Health & Welfare

- Behavioral Health
- Health Services (Hospital Coverage)
- Social Services

Leisure Services

- Cultural Affairs
- Parks and Recreation
- Seniors' Programs

What's Missing?



2016 SERVICE DELIVERY STRATEGY REVISIONS

Services that were revised in the last 2016 Service Delivery Strategy

2016 REVISIONS

- Emergency Management
- Emergency Medical Services
- Fire Protection
- Sewage Collection/ Treatment
- Stormwater Management
- Water Supply / Distribution



CURRENT SERVICE DELIVERY STRATEGY

Service areas included in the existing 2016 SDS that **may not** need to be changed in 2022



- Airport
- Cemeteries
- Code Enforcement
- Cultural Affairs
- Hazardous Materials
- Jail - Chatham County

- Libraries
- Mosquito Control
- New Road Construction
- Planning
- Purchasing
- Refuse Collection/Disposal
- Road Maintenance

- Road Paving
- Road Right-of-Way Mowing
- Seniors Programs
- Street Lighting
- Tax Billing & Collecting
- Traffic Control

PROPOSED 2022 SDS CATEGORIES

Public Safety	Public Works	Criminal Justice
Transportation	General Services	Housing
Health & Welfare	Leisure Services	



PROPOSED SERVICE DELIVERY STRATEGY UPDATES

Priority Areas to focus on in the 2022 SDS update

- Animal Control
- Annexation/Boundaries (to include known future areas)
- Behavioral Health
- Building Inspection
- Communications (Broadband, Fiber, and Radio Systems)
- Court Systems
- Emergency Management
- Emergency Medical Services

- Fire Protection
- Health Services (Hospital Coverage)
- Historic Preservation
- Homelessness
- Housing
- Jail
- Parks & Recreation
- Police Protection
 - 911
 - Marine Patrol

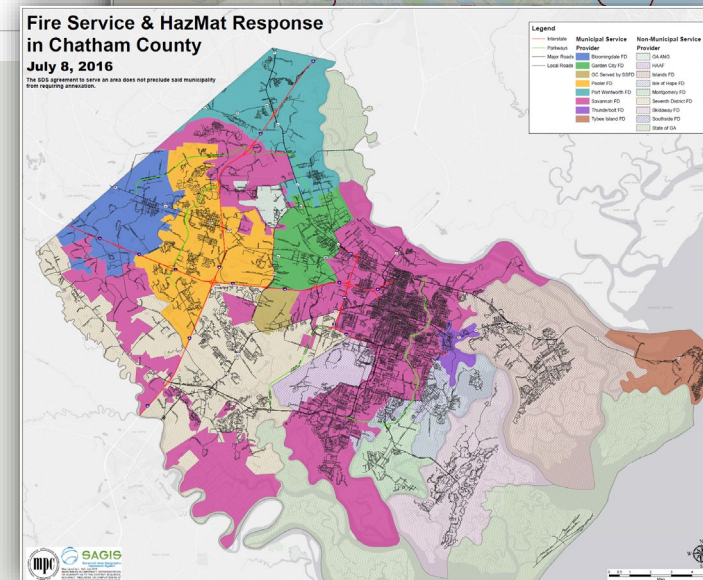
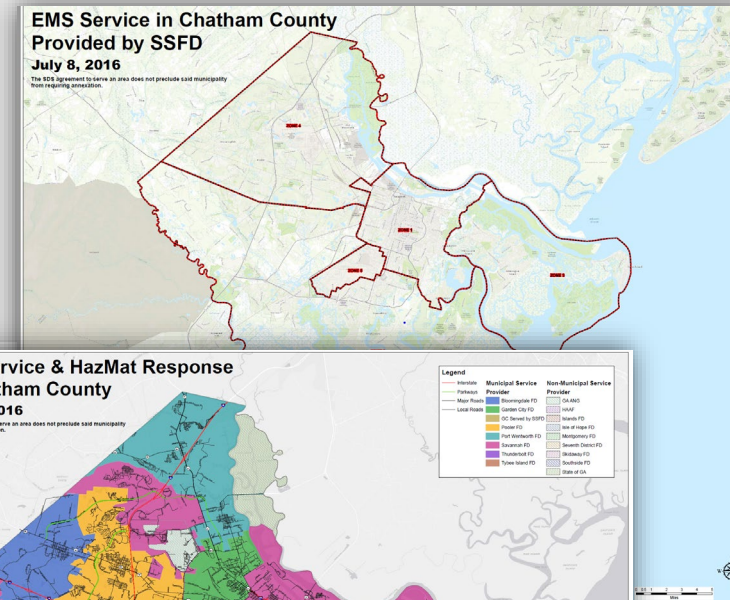
- Public Transportation/Bus Service
- Sewage Collection/Treatment
- Social Services
- Solid Waste Collection
- Stormwater Management
- Street Sweeping
- Traffic Management System
- Water Supply / Distribution





NEXT STEPS

- Agree on Categorical Revisions Needed
- Establish Timeline & Meeting Schedule



CONTACTS

Melanie Wilson, Executive Director
912-651-1440

Jackie Jackson
Advance Planning & Special Projects
Director
912-651-1479
jacksonj@thempc.org

