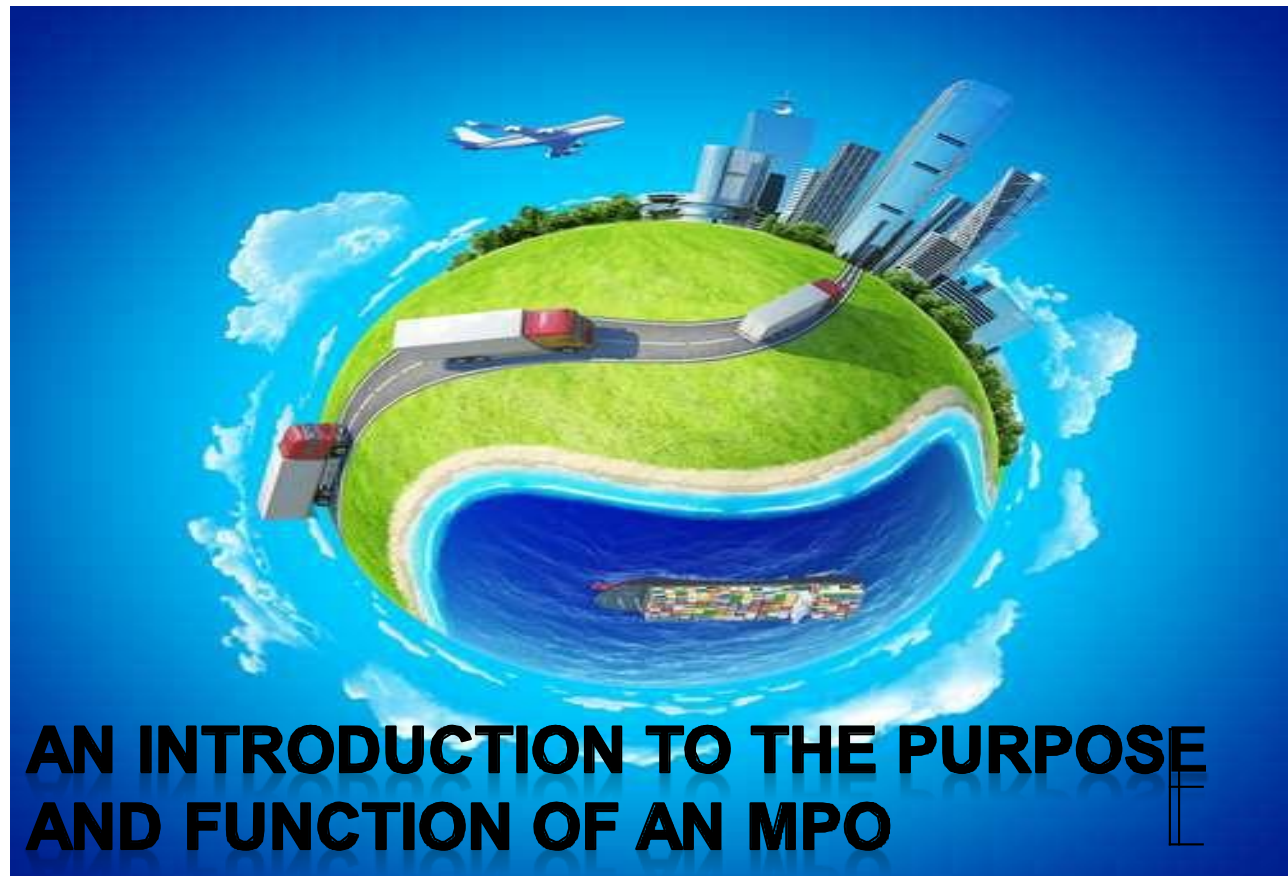

CORE MPO Economic Development and Freight Advisory Committee

February 7, 2019





DeLania L. Hardy, Association of MPOs
Craig Lyon, Anchorage Metro Area Transportation Solutions
Mark Wilkes, P.E., AICP, Director, CORE MPO



Purpose

- What is an MPO?
- MPO requirements
- Relationship of MPOs to the larger picture of transportation planning
- Federal law



What is an MPO?

- A transportation **policy-making and planning body** with representatives of local, state & federal government and transportation authorities
- ***Required*** by federal law in **urbanized areas** of 50,000 +
- 384 MPOs in the US
- Ensures federal spending on transportation occurs through a **comprehensive, cooperative, and continuing (3-C) process**
- Variety of **organizational arrangements** – “hosted” by another agency; stand-alone; existing agency designated as MPO





Federal Finances for an MPO

- MPOs receive Federal funds
 - Highway
 - Transit
- 20% match requirement to the Federal funds



Why an MPO?

- Transportation investment means **allocating scarce transportation funding resources** appropriately
 - Planning needs to reflect the **region's shared vision** for the future
 - Requires a **comprehensive examination** of the region's future and investment alternatives
 - MPO **facilitates collaboration** of governments, interested parties, and residents
-





MPO Federally Required Functions

- Establish a setting for effective decisionmaking
 - Identify and evaluate transportation improvements
 - Prepare and maintain a Metropolitan Transportation Plan (MTP)
 - Develop a Transportation Improvement Program (TIP)
 - Identify performance targets and monitor achievement of targets (new per MAP-21, FAST Act)
 - Involve the public – Participation Plan
 - Develop a Congestion Management Process (CMP) (TMAs only)
-

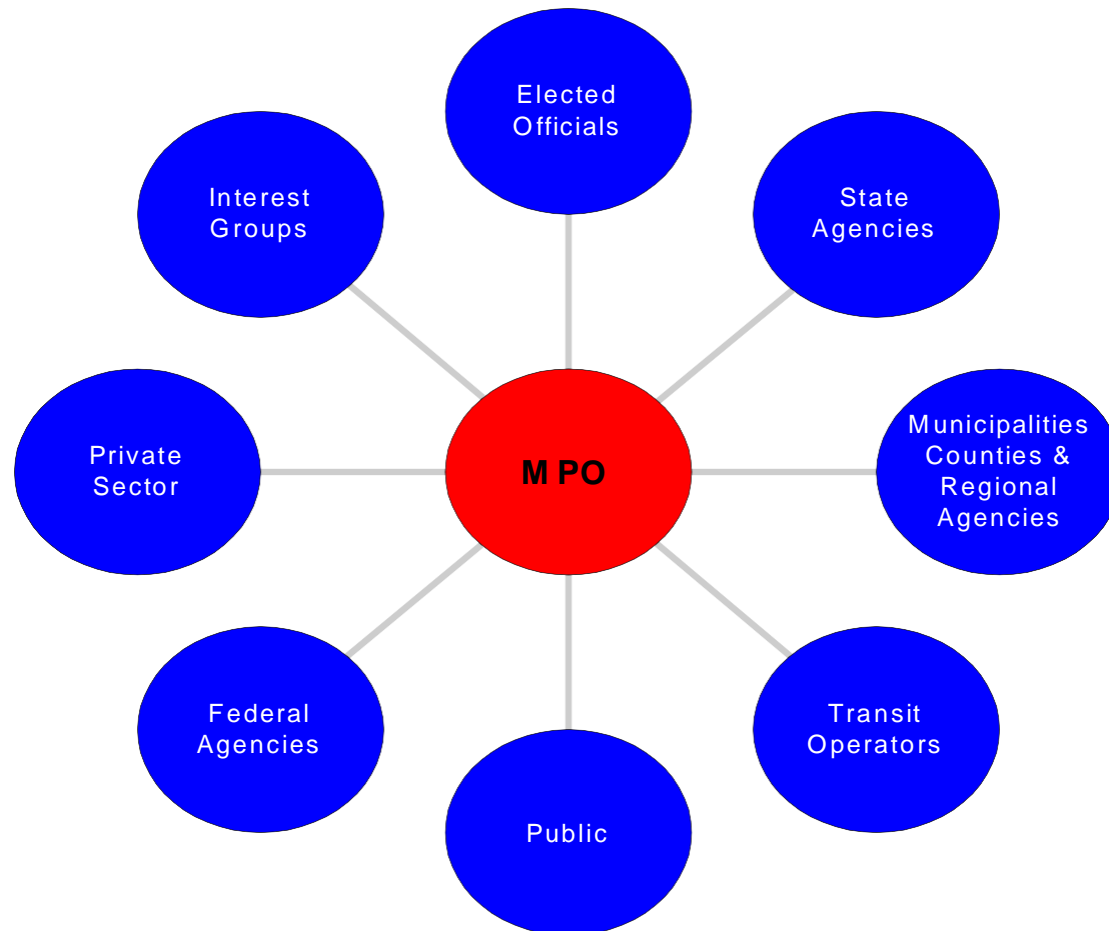


MPO Products

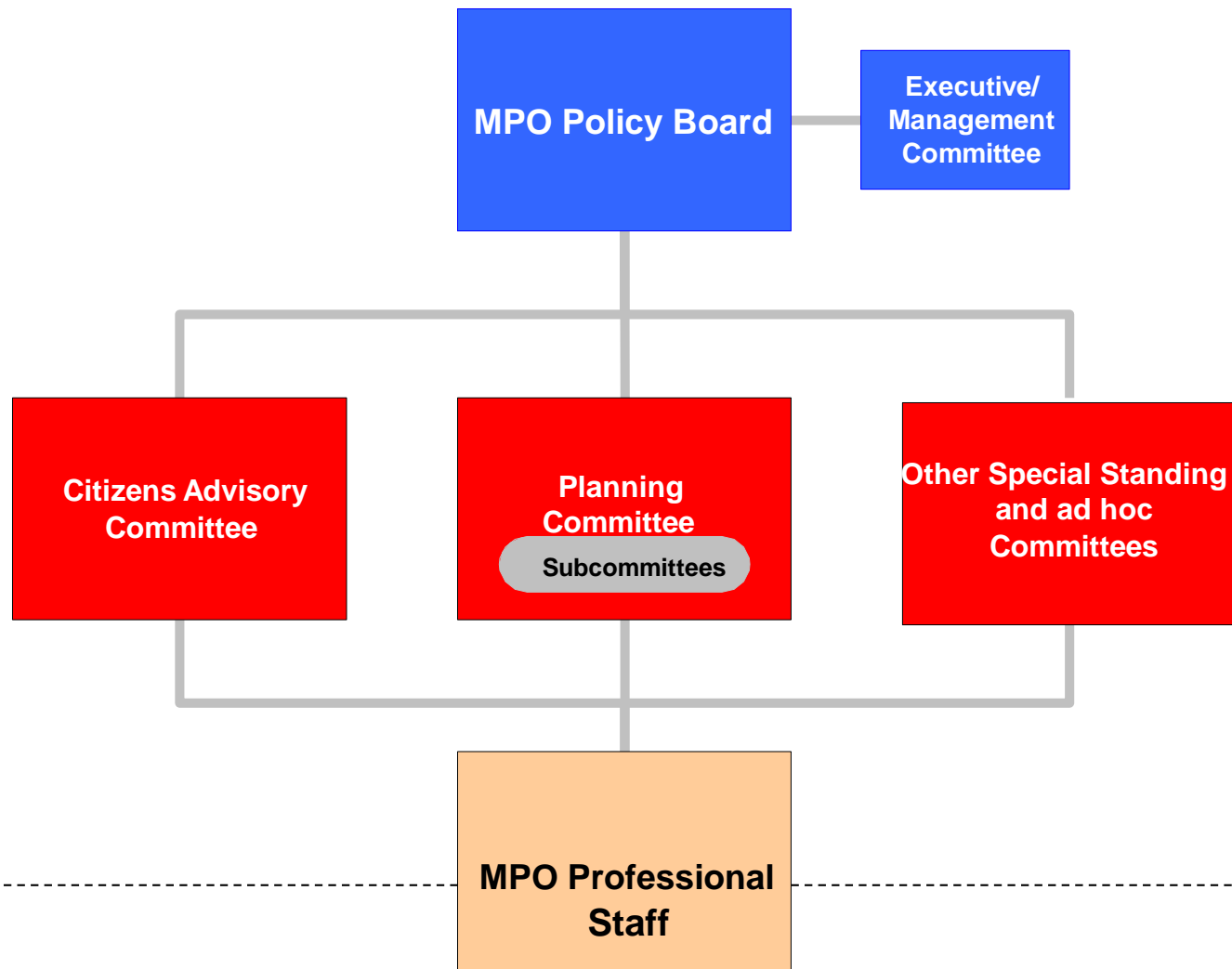
	Time Horizon	Contents	Update Requirements
Unified Planning Work Program (UPWP)	1-2 Years (1 Year in Georgia)	Planning tasks, studies, budget	Annual
Metropolitan Transportation Plan (MTP)	20+ years	Future goals, strategies, projects	5 Years (4 years in air quality non-attainment areas)
Transportation Improvement Program (TIP)	4 years	Transportation investments projects	4 years (Annually in Georgia)
Participation Plan	Not specified	Public engagement strategies and procedures	Periodic review and update
Congestion Management Process (CMP) (TMAs only)	Not specified	Objectives, system performance measures, data, mitigation strategies, activities and schedule, evaluation	Not specified, but must provide input to MTP



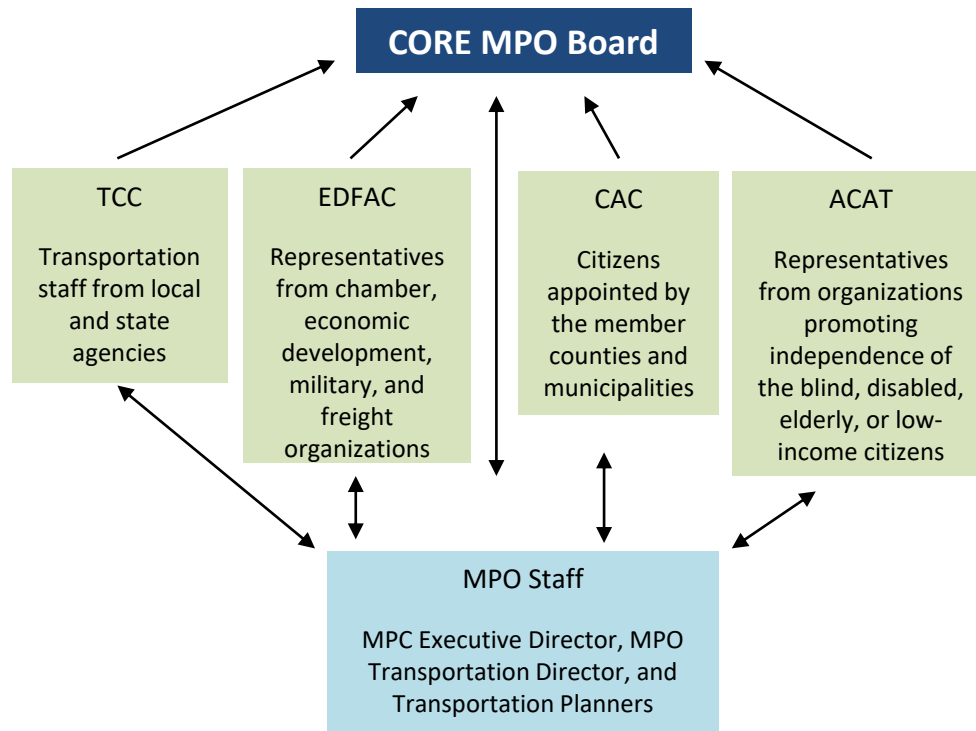
Who is the MPO?



"Typical" MPO Structure



CORE MPO Structure

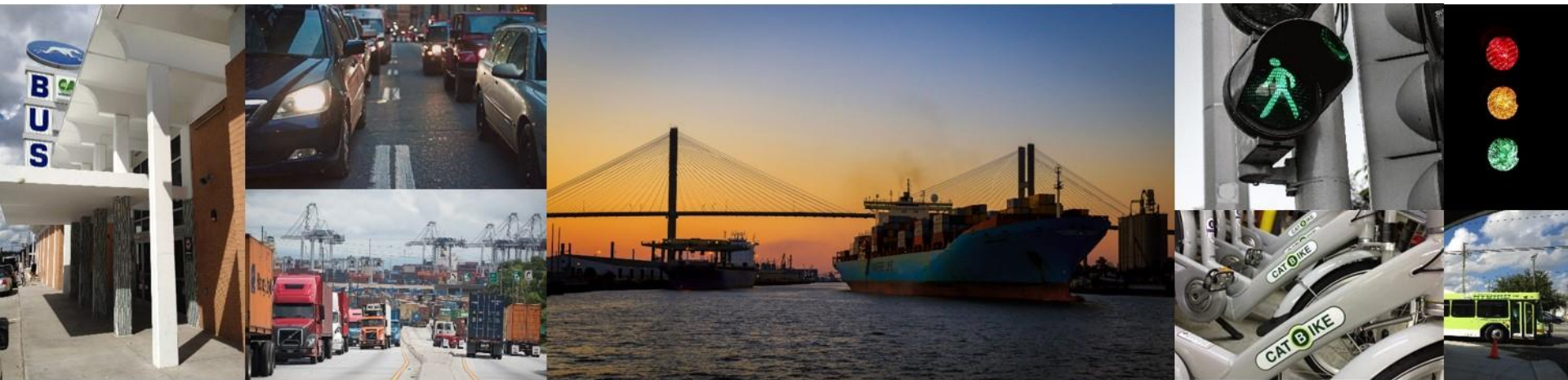


Mobility 2045

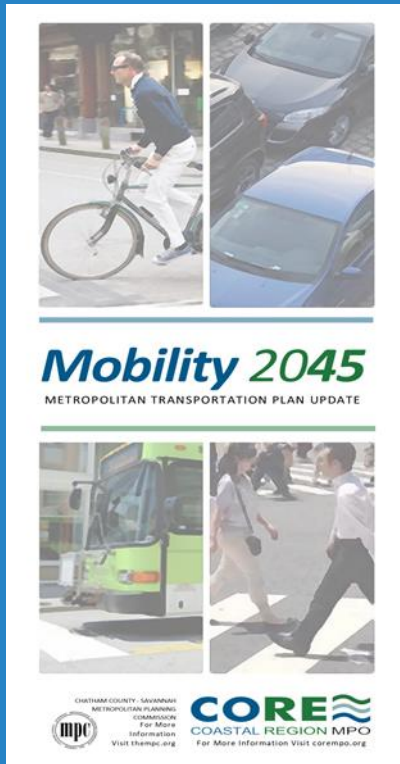
METROPOLITAN TRANSPORTATION PLAN UPDATE



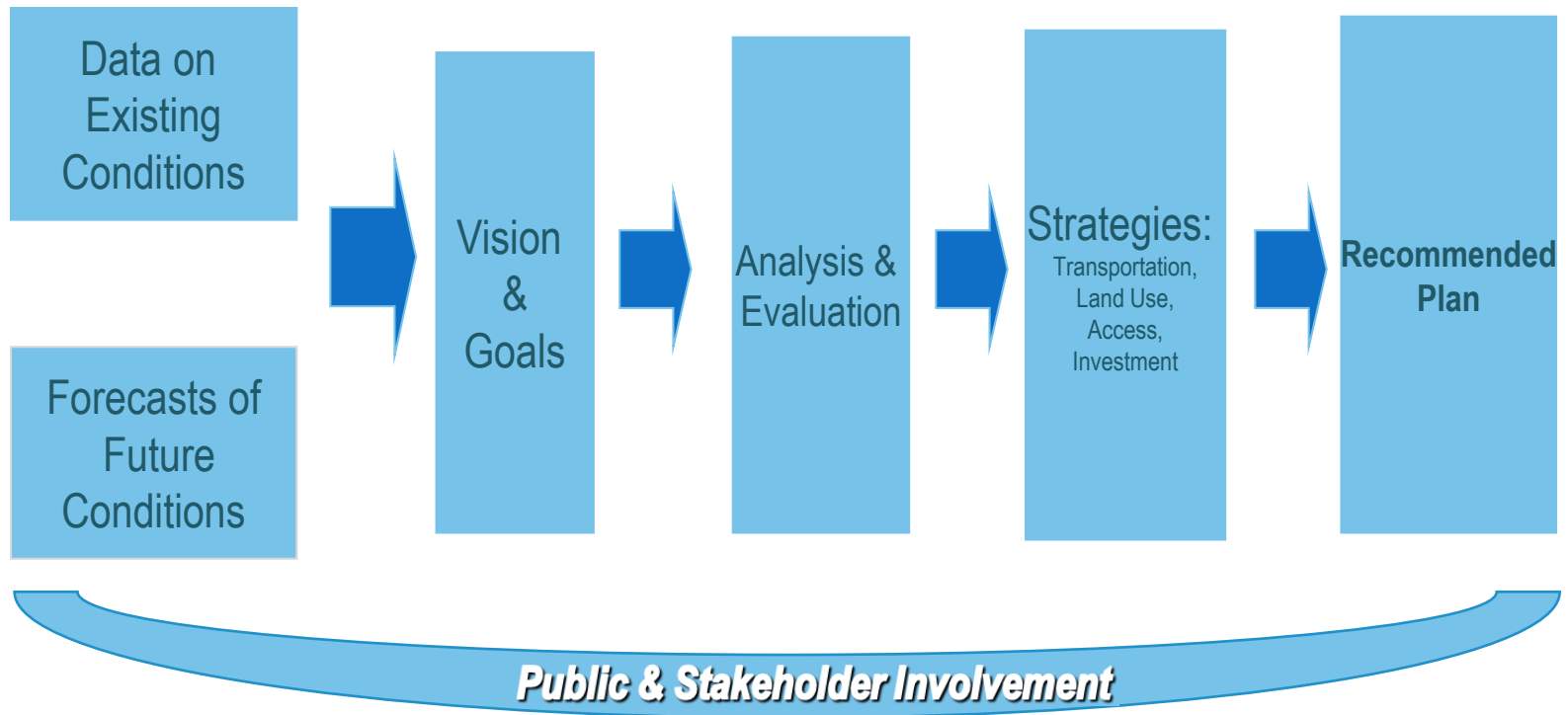
OVERVIEW



What is the Metropolitan Transportation Plan (MTP)?



- The region's transportation system investment priorities and plans
- Projections for needs in the next 20+ years (updated every 5 years)
- Focused on systems level & intermodal/multimodal in nature
- Links with regional land use, development, housing & employment goals & plans
- Emphasize efficient use of existing system & its preservation
- Aligns with the Statewide Transportation Plan
- Fiscally constrained prioritized listing of projects



MTP Development Process

What are people saying so far?

Survey conducted
June 21st to July 31st

630 Respondents with 200
comments

Distributed through email,
social media and news

Community thoughts on improving regional transportation:

The majority of the additional comments received involved:

- Bicycle and pedestrian issues (39%)
- Safety (22%)
- Transit and paratransit (31%)
- Connectivity and accessibility issues (13%)

Other issues identified included:
flooding, affordable choices, parking, ride share, roadway widening, intersection improvements and roundabouts, rail options, maintenance, land use, park and rides and congestion

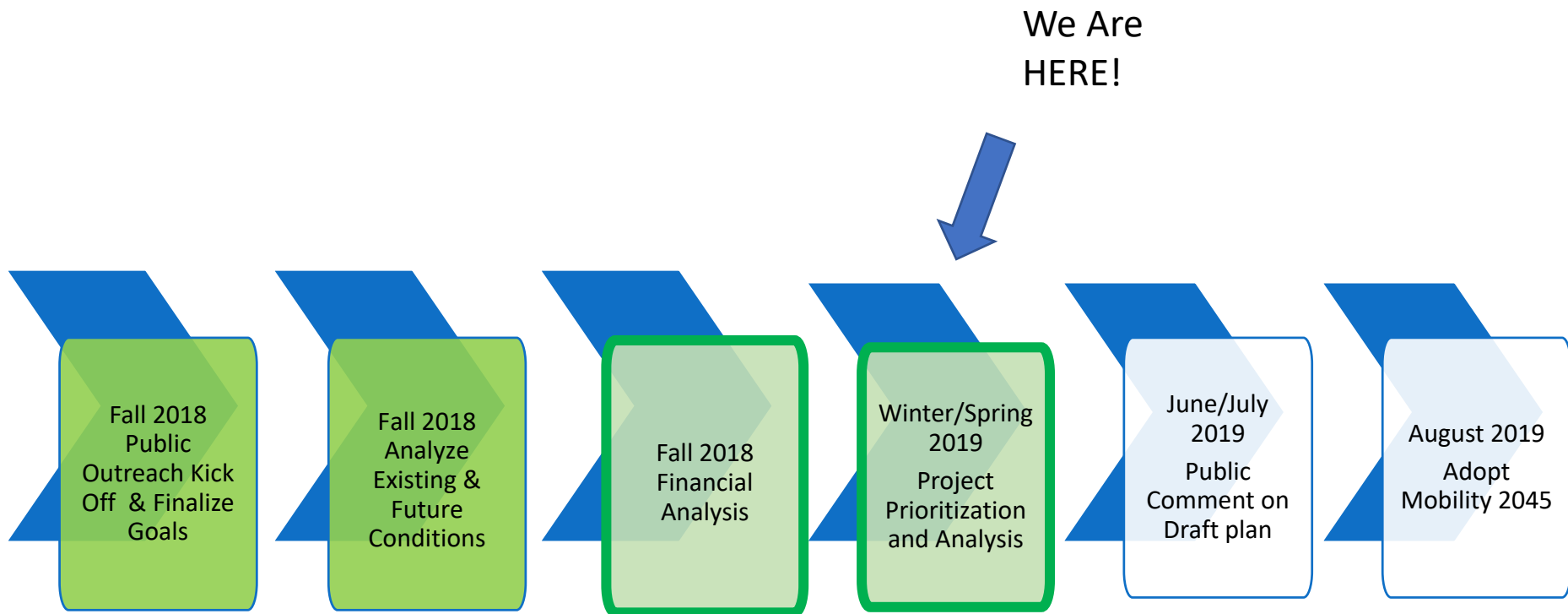
Adopted Goals



Mobility 2045

METROPOLITAN TRANSPORTATION PLAN UPDATE

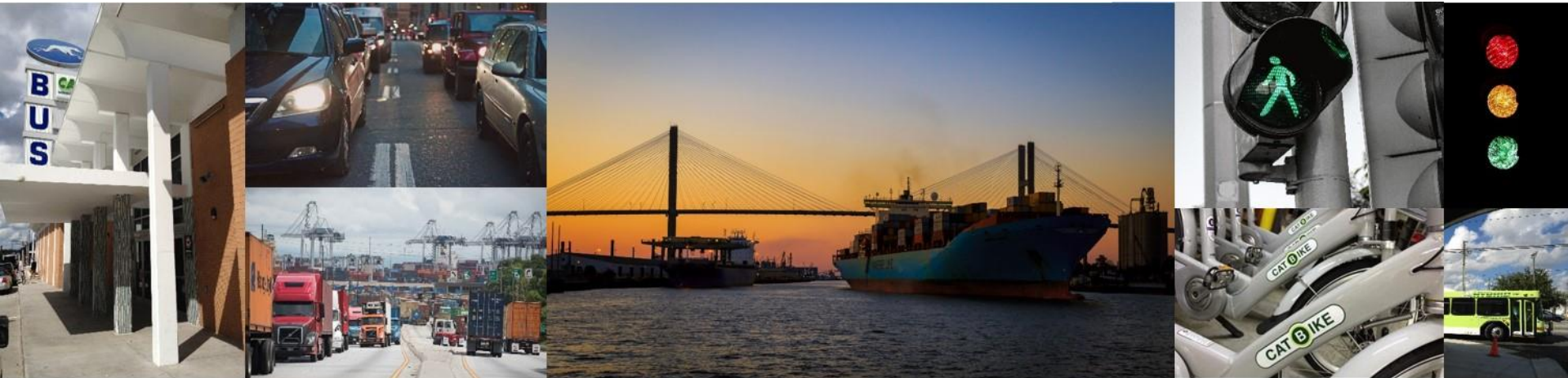
Schedule



Mobility 2045

METROPOLITAN TRANSPORTATION PLAN UPDATE

Stephanie Rossi
Mobility 2045 Project Manager
rossis@thempc.org
912-651-1476



I-95 AT AIRWAYS AVENUE/POOLER PARKWAY INTERCHANGE STUDY

PI NO. 0015849

January 23, 2019

**SAVANNAH
HILTON HEAD**
INTERNATIONAL

CORE
COASTAL REGION MPO



EXIT 104
Savannah/Hilton Head
Intl Airport



CORE
COASTAL REGION MPO

Project Challenges

- **Traffic Congestion**
- **Anticipated Residential and Commercial Growth**
- **Proximity of Intersections /Development**
- **Environmental Constraints**
- **State & Federal Approvals**
- **Funding**



Project Need and Purpose



Improve Access to Support Tourism & Employment Growth

- Savannah Hilton Head International
 - 1.2K enplanements in 2017
 - 1.7M enplanements by 2035
- Gulfstream Aerospace

 - 10,000+ employees



Project Need and Purpose

Address Congestion Driven by Rapid Commercial and Residential Growth

- Tanger Outlets, Sams, Multiple Others
- Pooler Population Growth
 - 6,500 in 2000
 - 23,700 in 2016

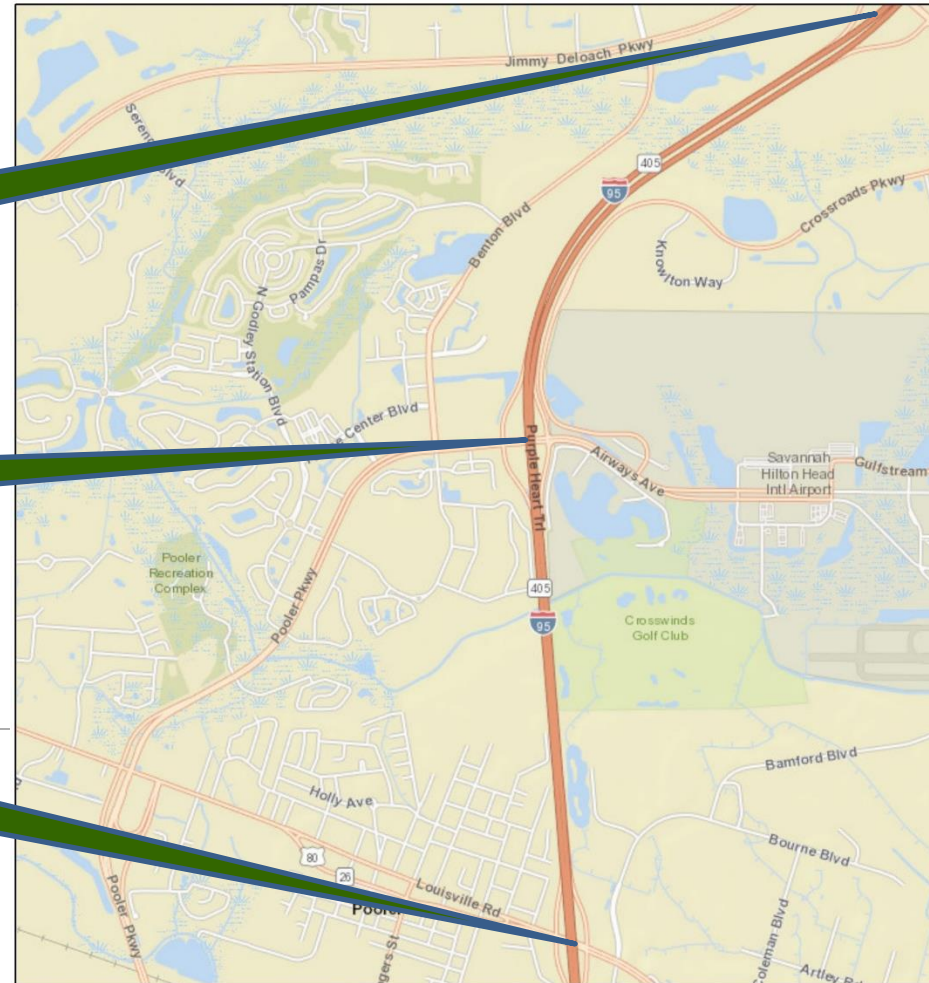


Study Area

Exit 106: Jimmy Deloach Pkwy

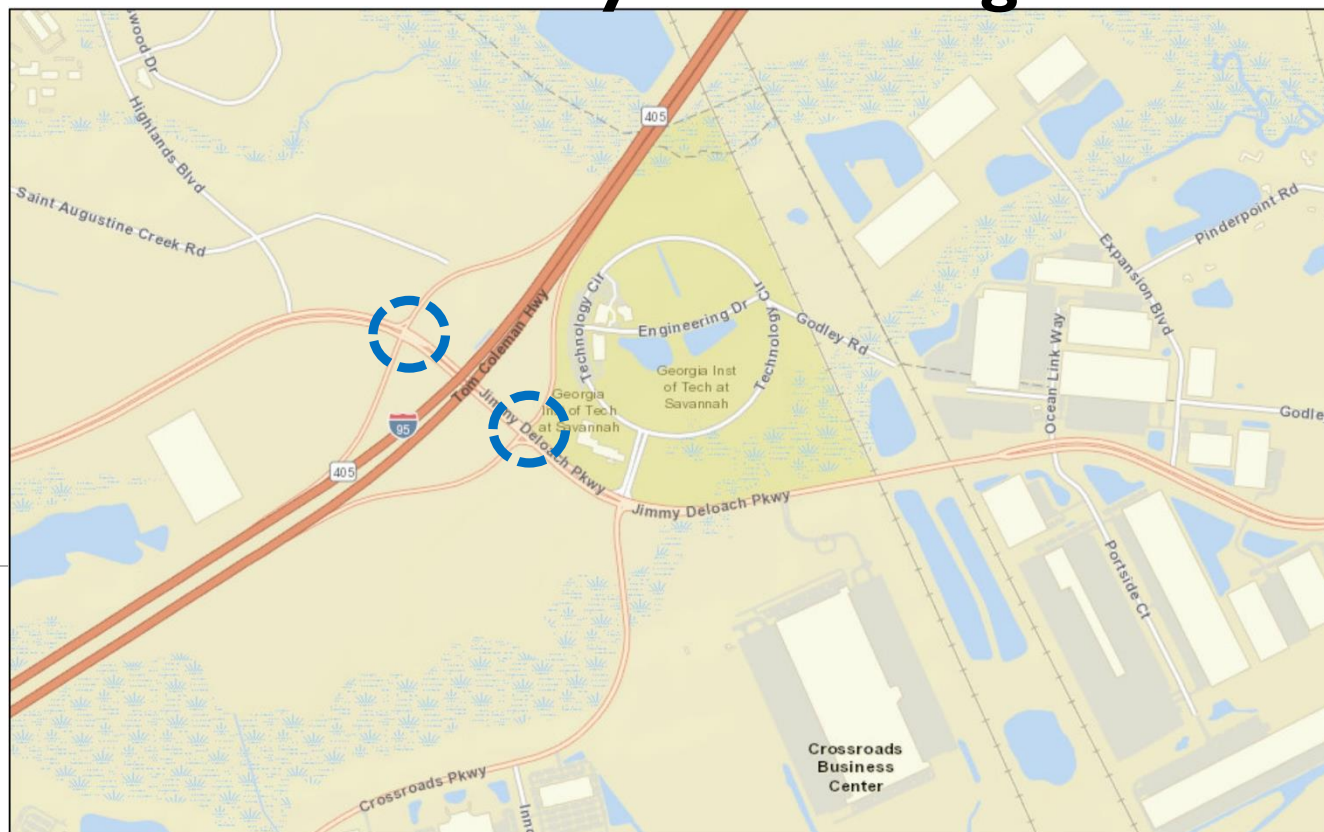
Exit 104: Savannah/Hilton Head
Intl Airport

Exit 102: US 80/Pooler Garden
City



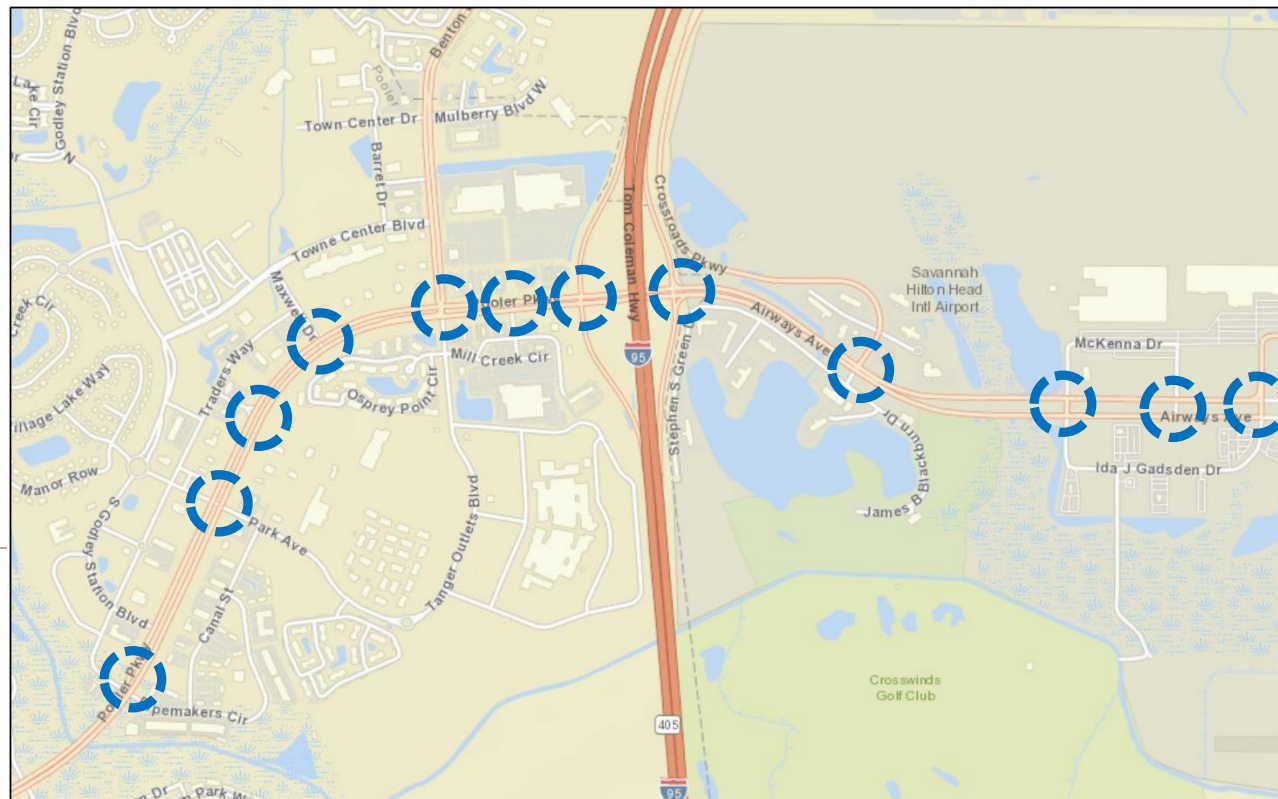
Analysis Area

I-95 at Jimmy Deloach Pkwy Interchange



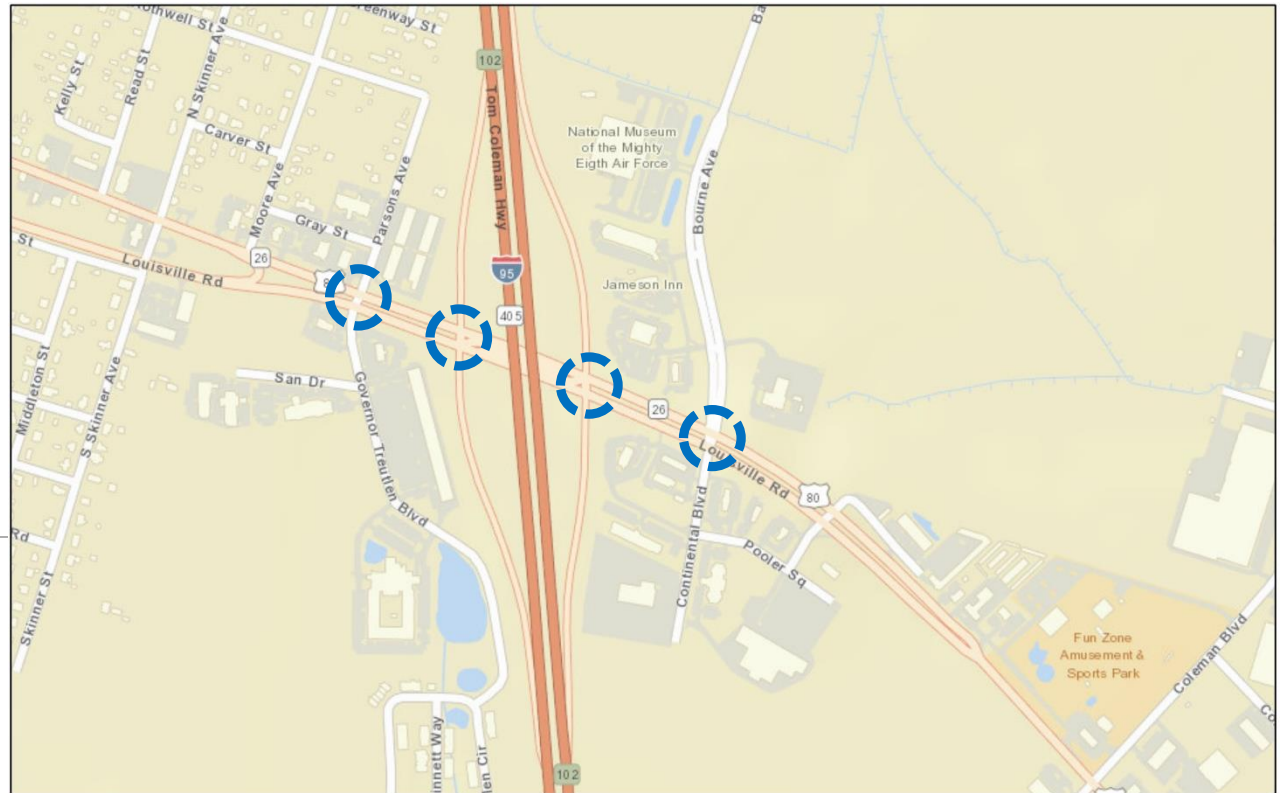
Analysis Area

I-95 at Airways Ave/Pooler Pkwy



Analysis Area

I-95 at US 80/ Louisville Road



Interchange Study Traffic Analysis

Basic Freeway Segments

- Analysis of one-way, uninterrupted freeway (interstate) segments

Ramp Junctions

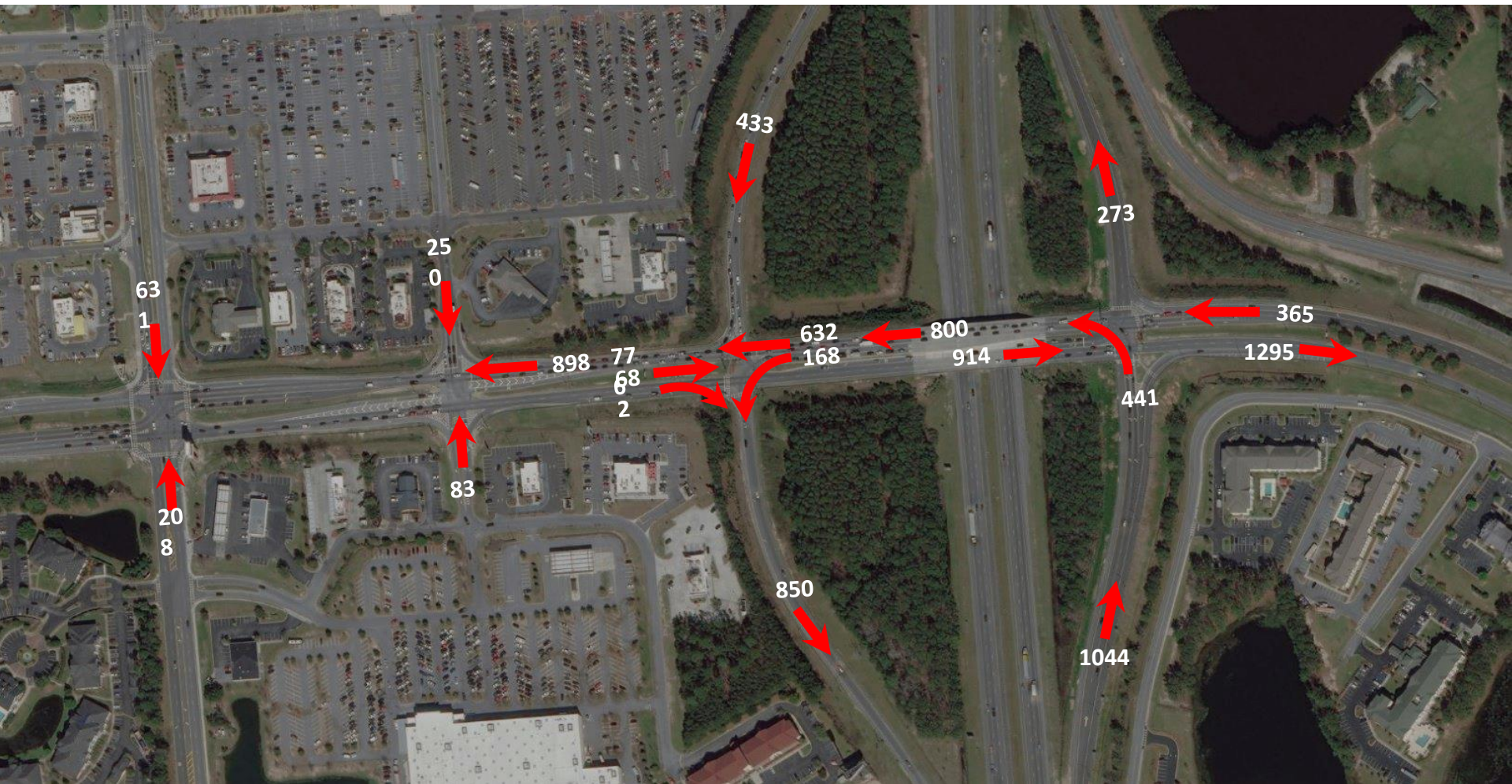
- Analysis of merge (on-ramp) and diverge (off-ramp) junctions

Weave Segments

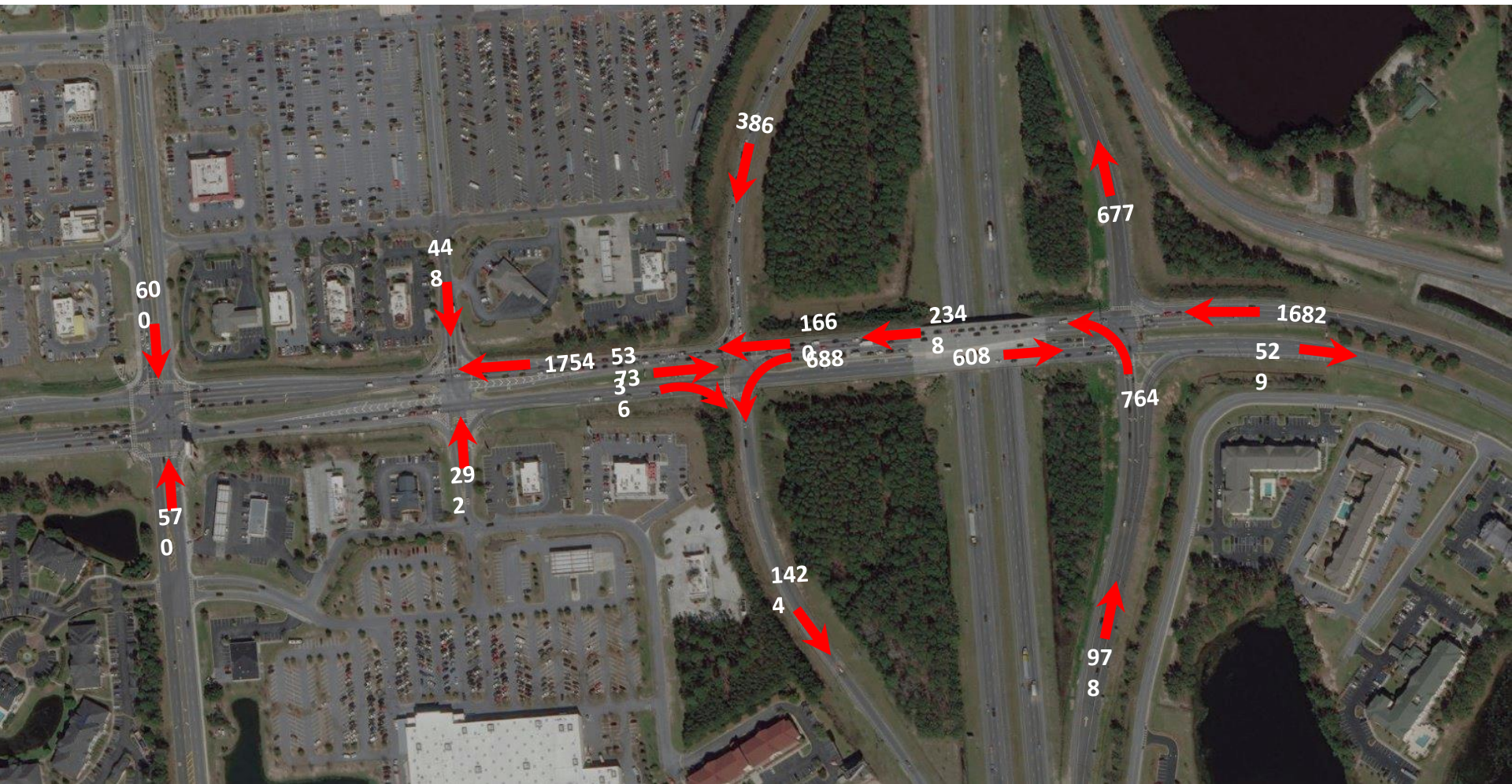
- Analysis of freeway segments where two or more traffic streams cross paths. Not applicable to this study.
-

Intersections

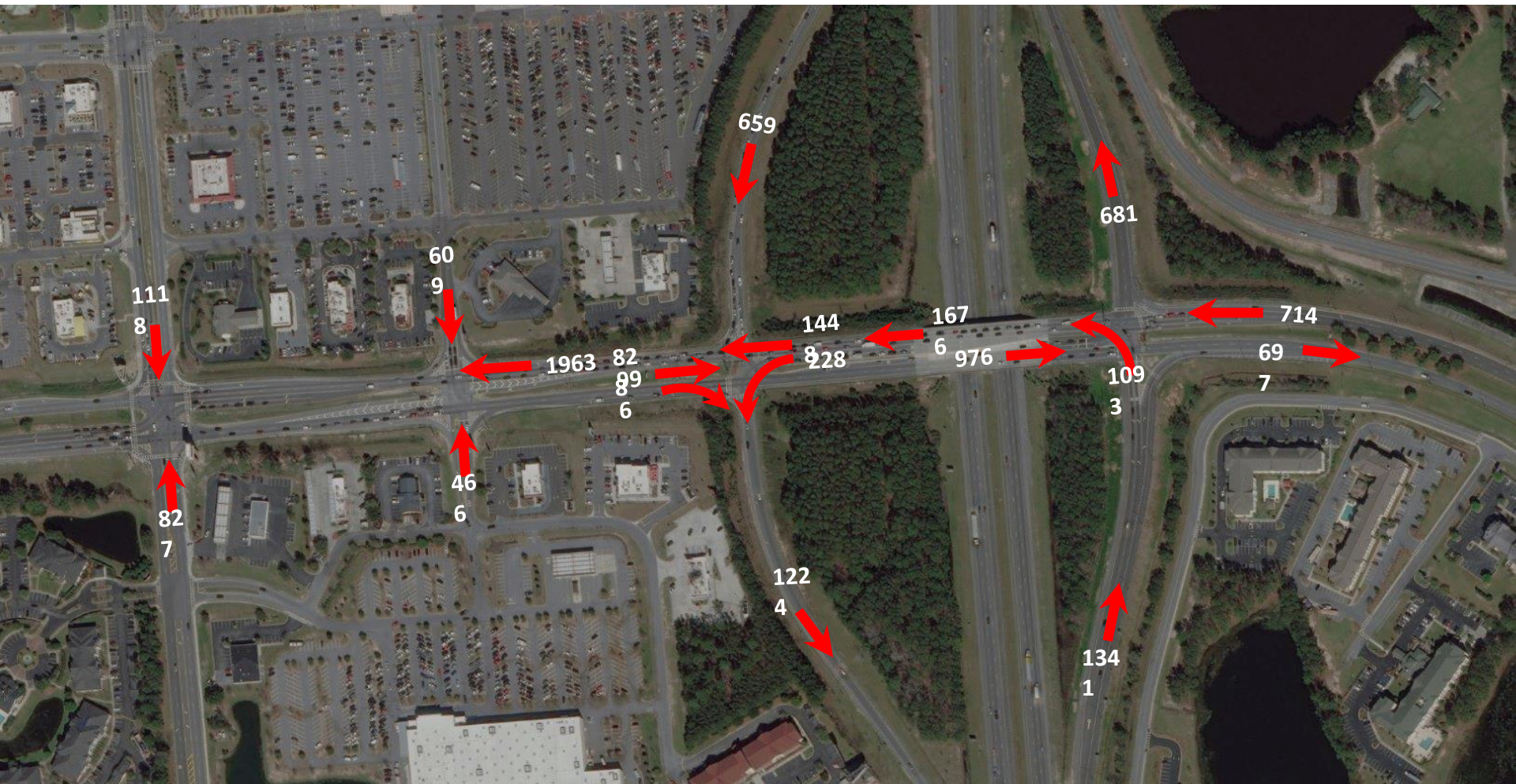
- Analysis of signalized and un-signalized intersections. Particular attend given to intersection at interstate ramps.



AM Peak Hour Volumes



PM Peak Hour Volumes

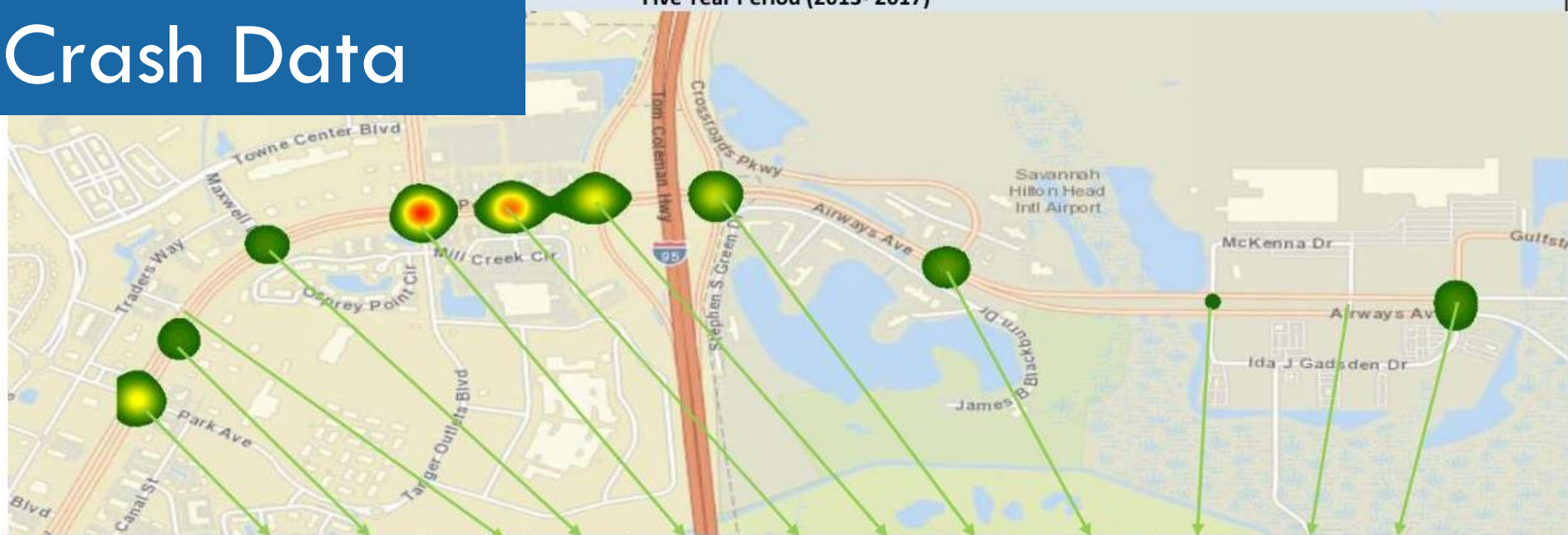


Saturday Peak Hour Volumes

Crash Review Summary by Intersection

Five Year Period (2013- 2017)

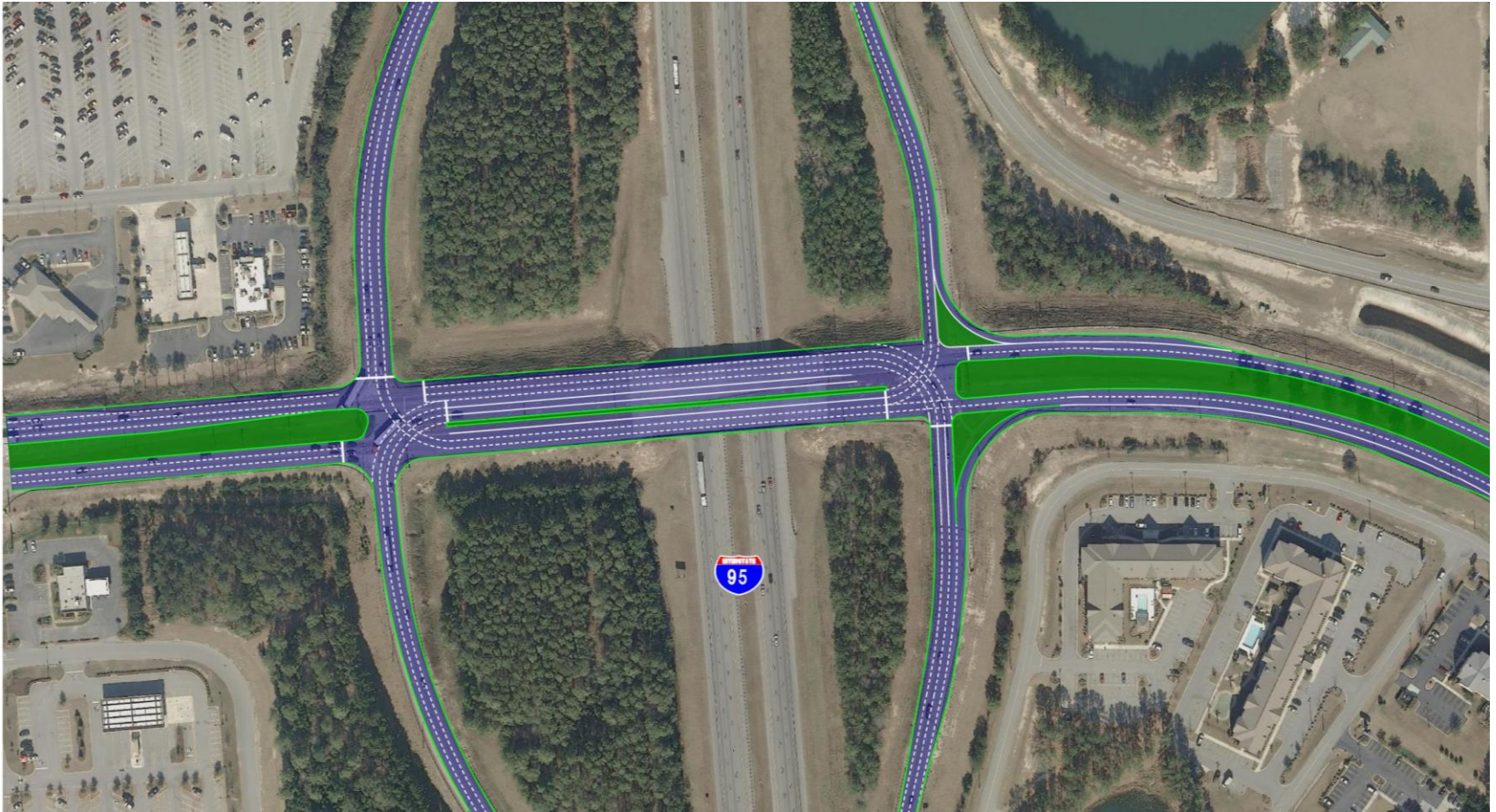
Crash Data



	Pooler Pkwy @ Park Ave	Pooler Pkwy @ Publix	Pooler Pkwy @ Medical Park Dr	Pooler Pkwy @ Maxwell Dr	Pooler Pkwy @ Benton Blvd	Pooler Pkwy @ Wal-Mart	Pooler Pkwy @ I-95 SB	Airways Ave @ I-95 NB	Airways Ave @ Crossroads Pkwy	Airways Ave @ McKenna Dr	Airways Ave @ Gulfstream Entrance	Airways Ave @ Ida J Gadsden Dr	Total
# of Crashes	161	36	9	40	309	261	159	116	58	15	7	53	1224
Injuries	36	11	1	12	87	59	26	18	14	4	0	11	279
Fatalities	1	0	0	0	0	0	0	0	0	1	0	0	2
Manner of Collision													
Angle	23	3	1	20	59	58	15	30	11	5	1	15	241
Head On	1	0	0	0	3	2	0	5	2	0	0	3	16
Rear End	126	23	3	13	213	179	125	61	30	2	2	20	797
Sideswipe	6	3	2	5	44	16	9	15	7	3	3	15	128
Not a Collision with a Motor Vehicle	5	1	1	2	2	3	6	4	7	4	1	0	36
Unknown	0	6	2	0	3	4	4	1	1	1	0	0	22

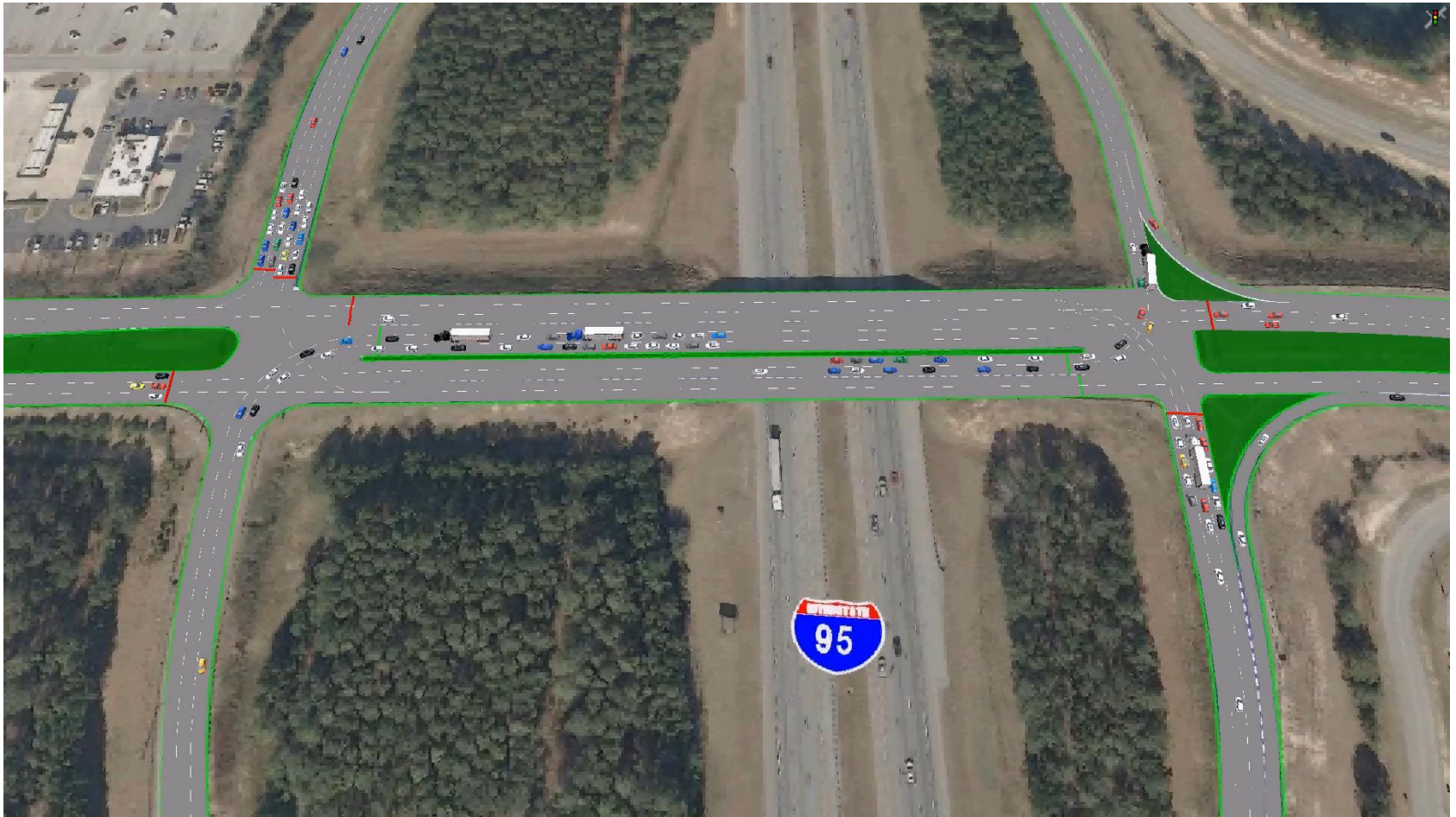
Interchange Option

Widen Existing Bridge & Ramps



Interchange Option

Widen Existing Bridge & Ramps



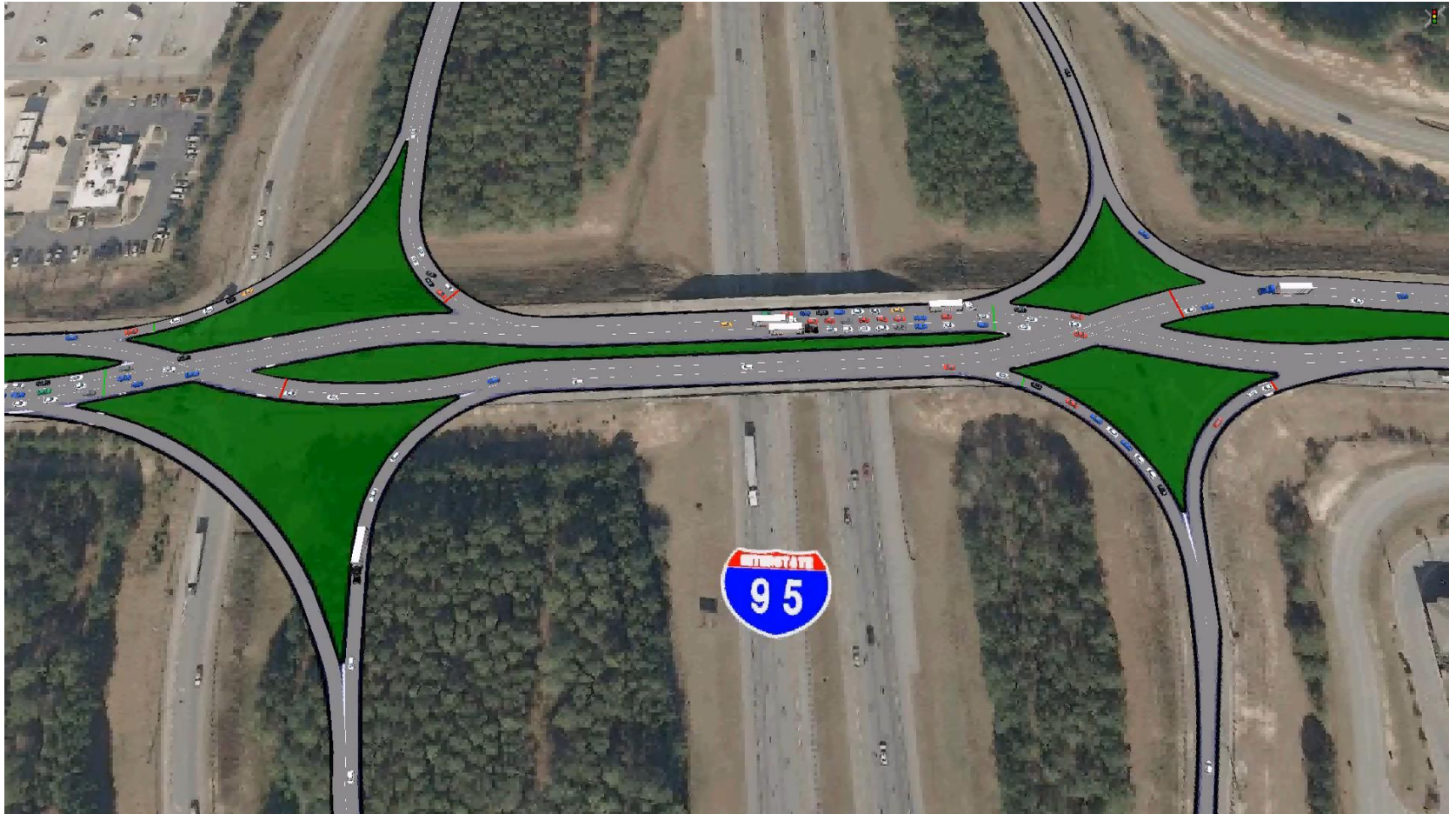
Interchange Option

Diverging Diamond Interchange



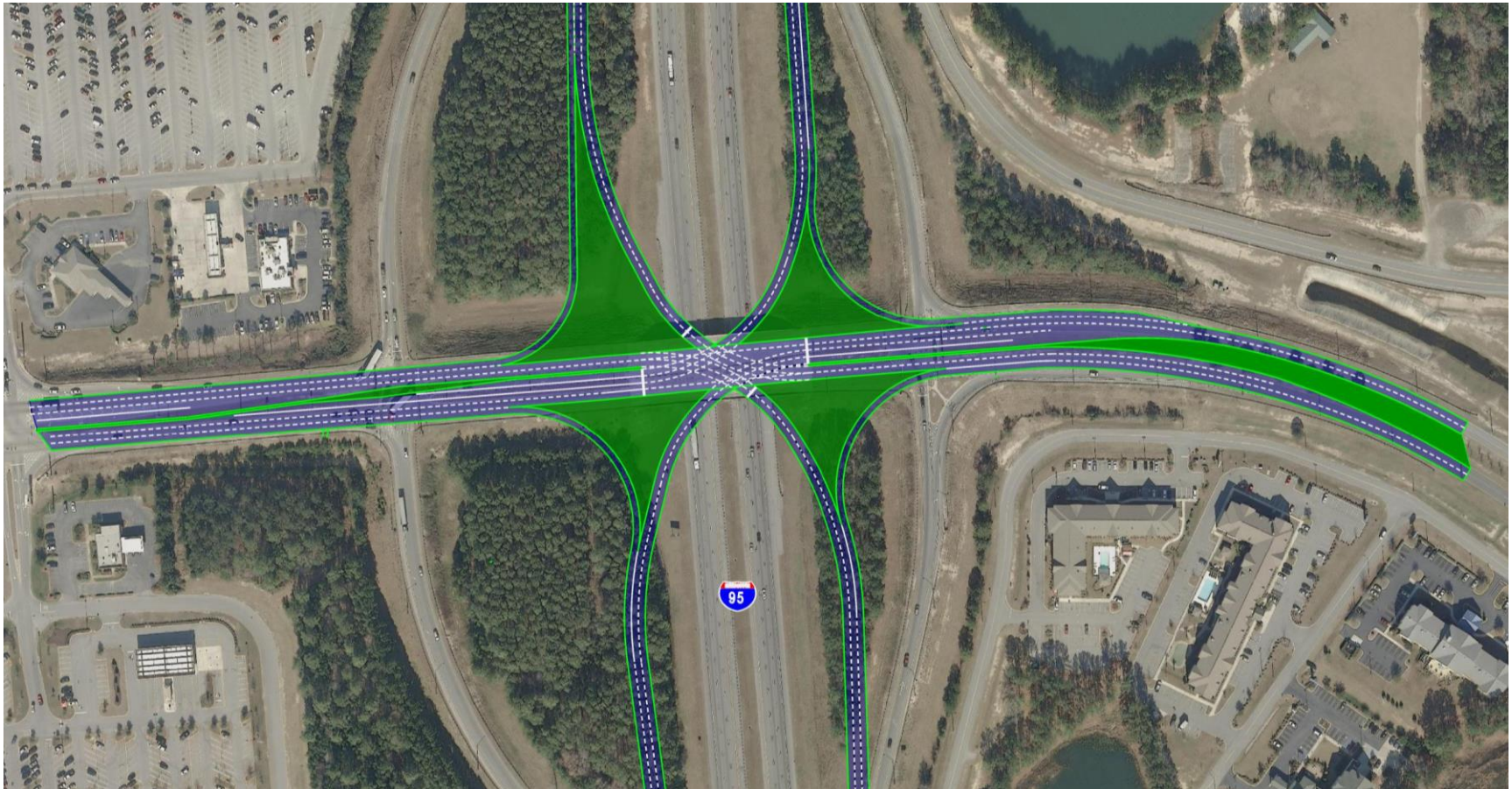
Interchange Option

Diverging Diamond Interchange



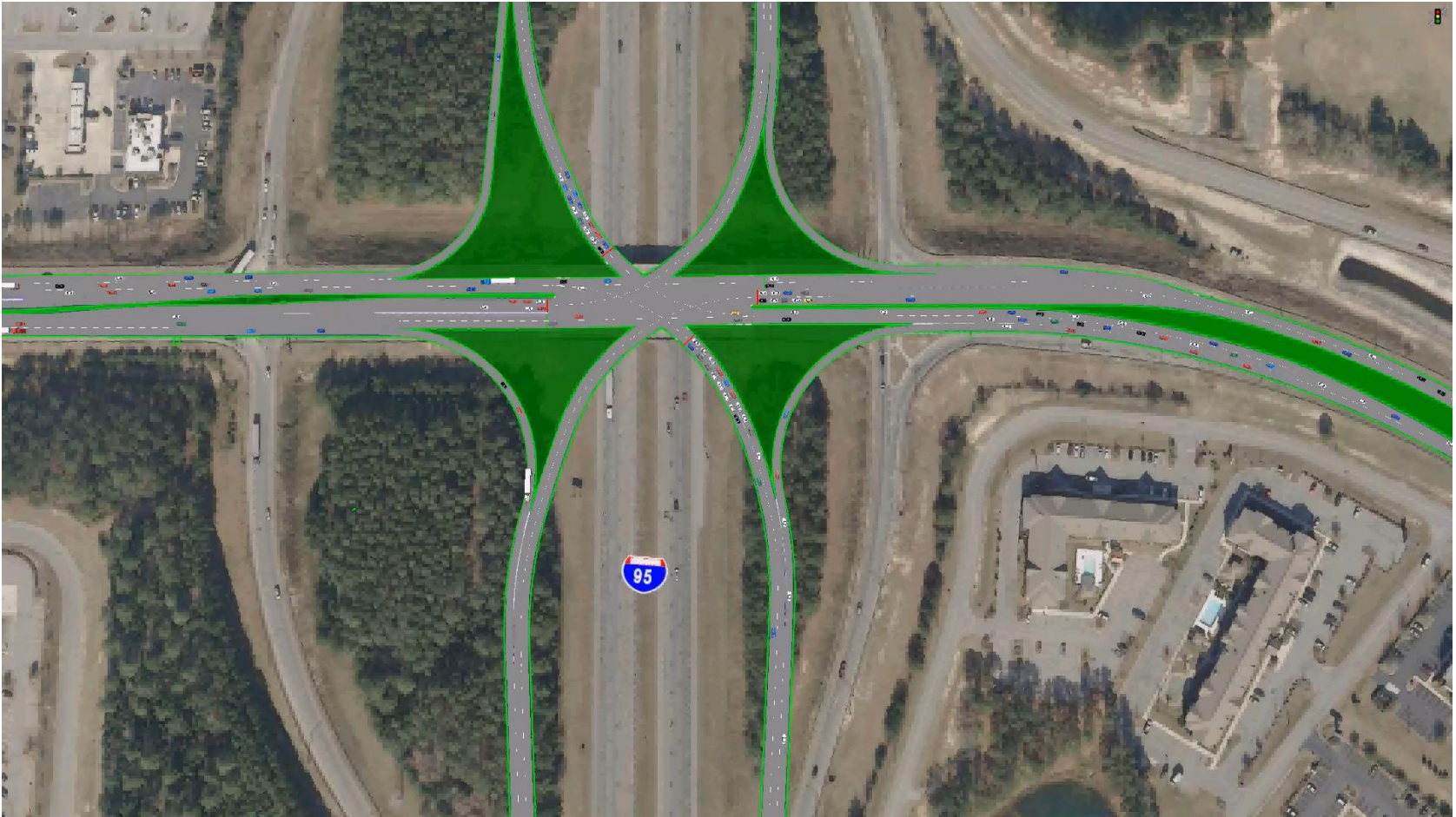
Interchange Option

Single Point Urban Interchange (SPUI)



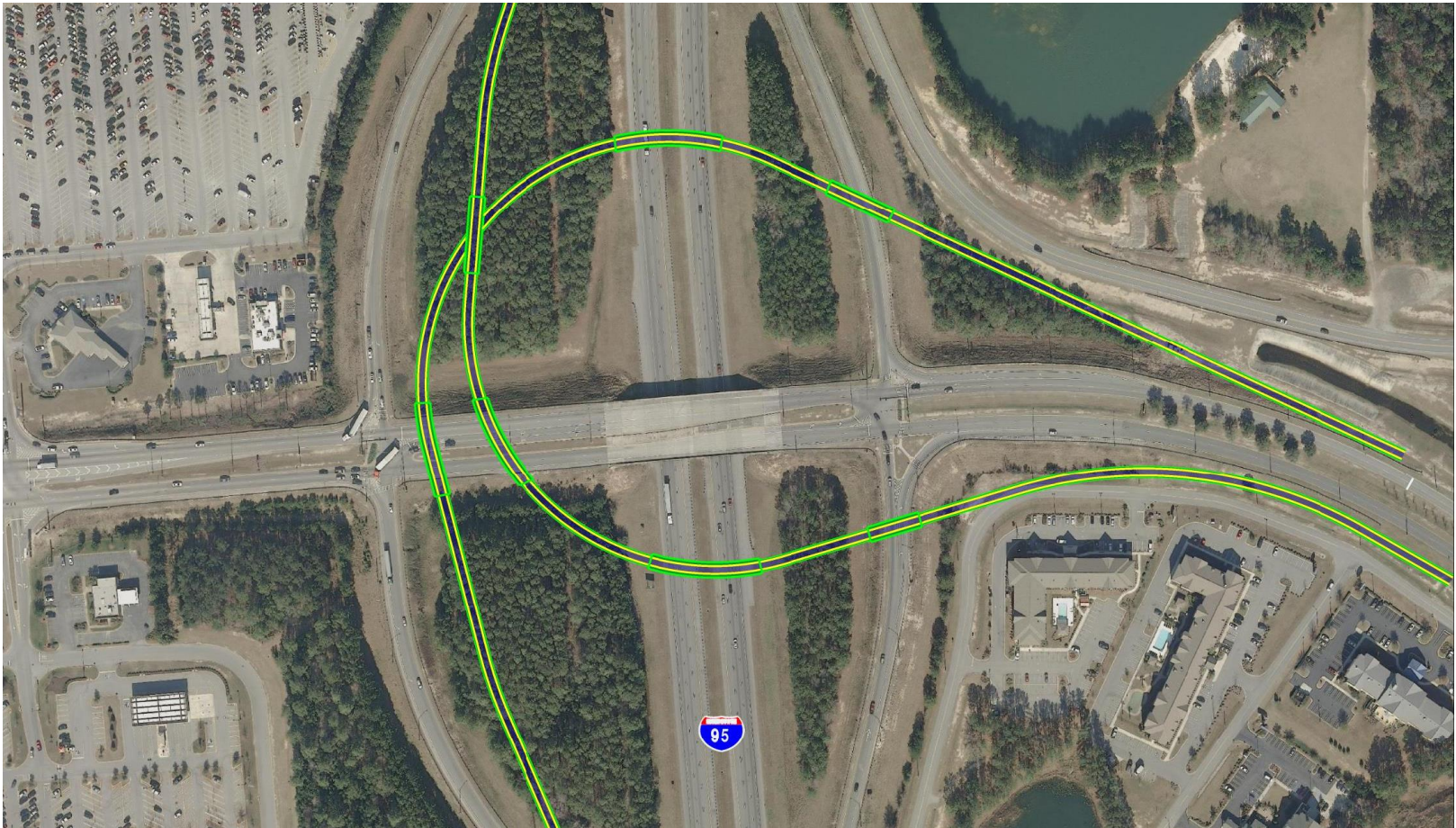
Interchange Option

Single Point Urban Interchange (SPUI)



Interchange Option

Flyovers from North and to South



Interchange Option

Flyovers from North and to South



Study

- Identify short and long-term transportation improvement needs within the study area
- Develop Preferred Alternative concept including planning level cost estimates
- Prepare interchange study report that can be re-packaged into Interchange Modification Report (IMR) at a later date

Public/Stakeholder Engagement

Agency Staff and Elected Official Interviews

- Chatham County
- City of Pooler
- City of Savannah
- GDOT Transp. Board
- GDOT District 5
- GDOT Office of Planning
- City of Garden City
- City of Bloomingdale
- Port Wentworth
- Air National Guard

Public/Stakeholder Engagement

Business/Community Interviews

- Gulfstream
 - Tanger Outlets
 - Homeowners Associations
 - Hotels
 - Wal-Mart
 - Sam's club
 - Home Depot
 - Other
-

Public/Stakeholder Engagement

- **Public Meetings**
 - Three (3) Public Meetings
 - **Stakeholder Interviews with Others as Needed**
 - **GDOT Coordination Meetings**
 - **MPO & Airport Commission Presentations**
-



I-16 at Little Neck Road/ Jimmy DeLoach Parkway Interchange Study

Study Background

- Jimmy DeLoach Parkway Extension
- Port growth and expansion
- Other significant developments
- Lays the groundwork for IMR and NEPA

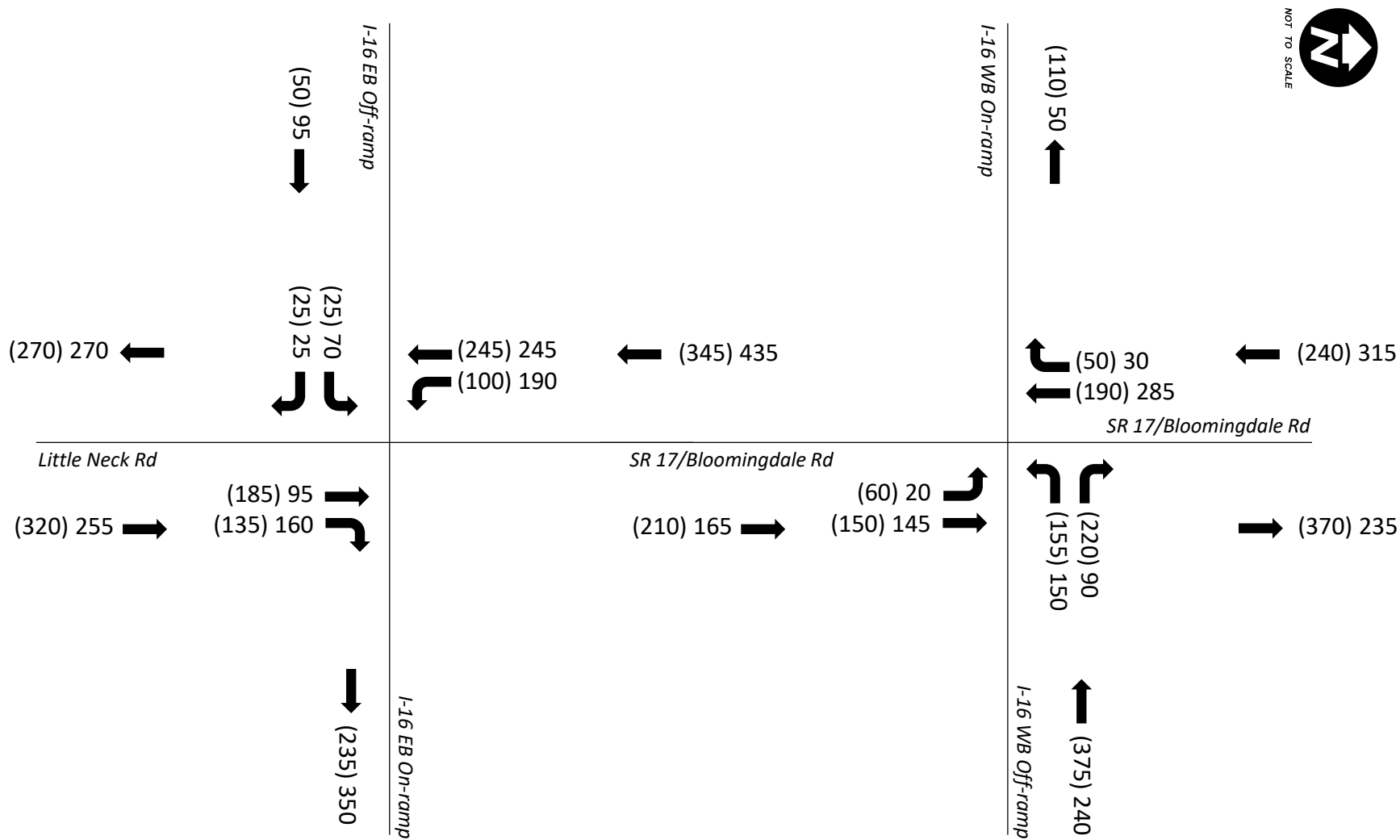
Crash Data, 2013-2017 (Study Area)



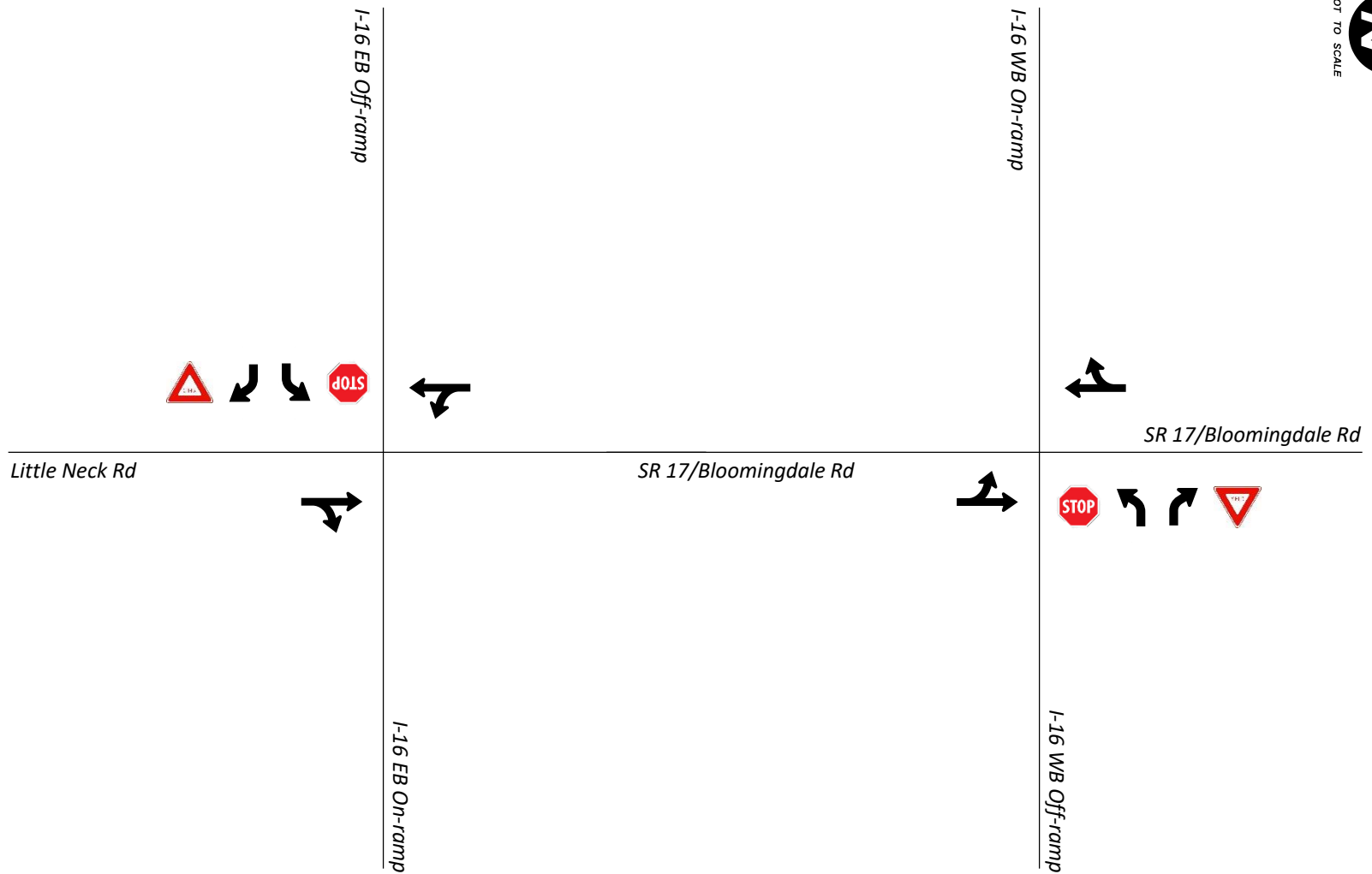
Existing Conditions Review

- Existing traffic volumes
- Existing traffic operations
- Crash data
- Origin-Destination flows
- Environmental Survey

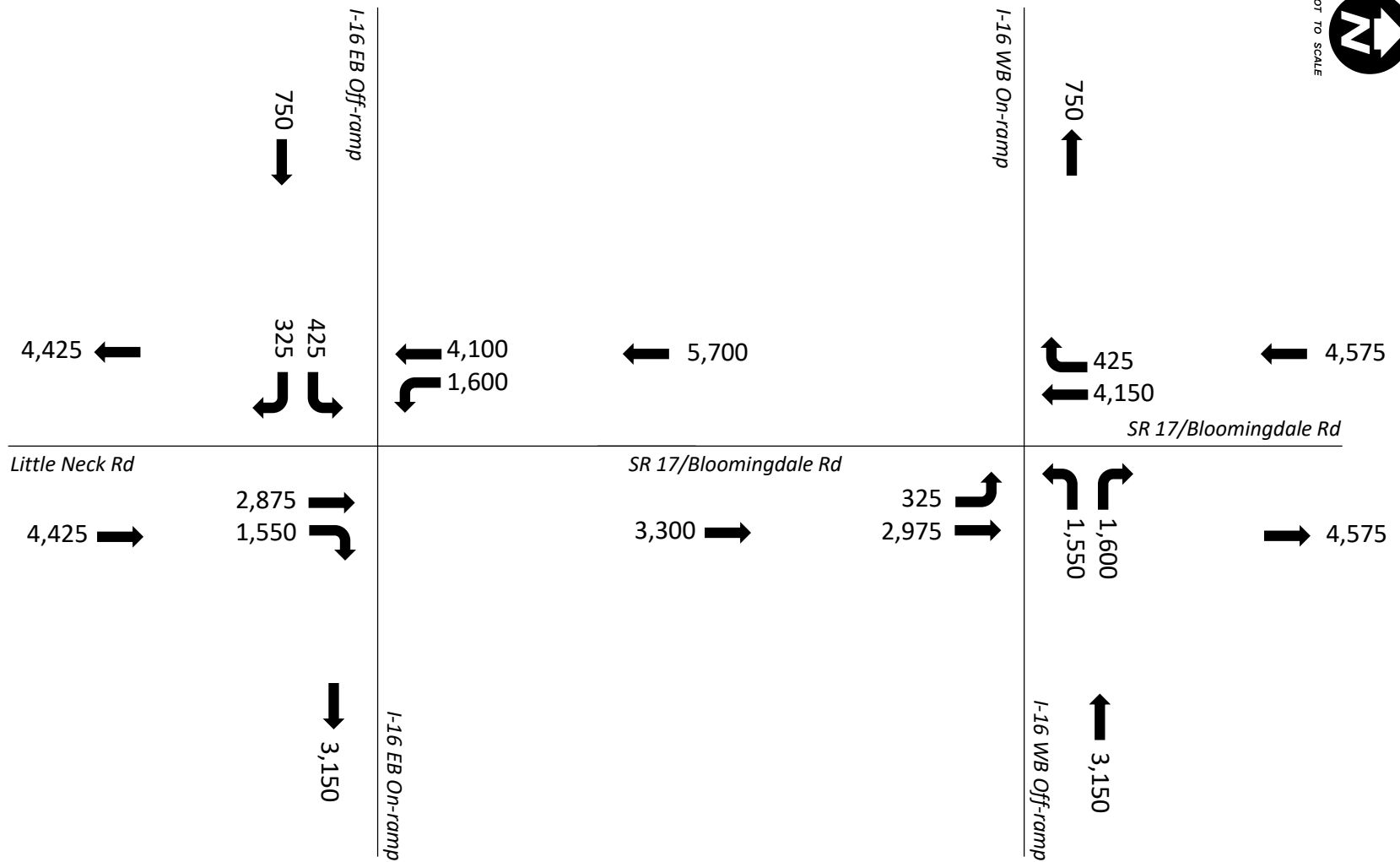
Existing (2018) DHV Volume (PM)/AM



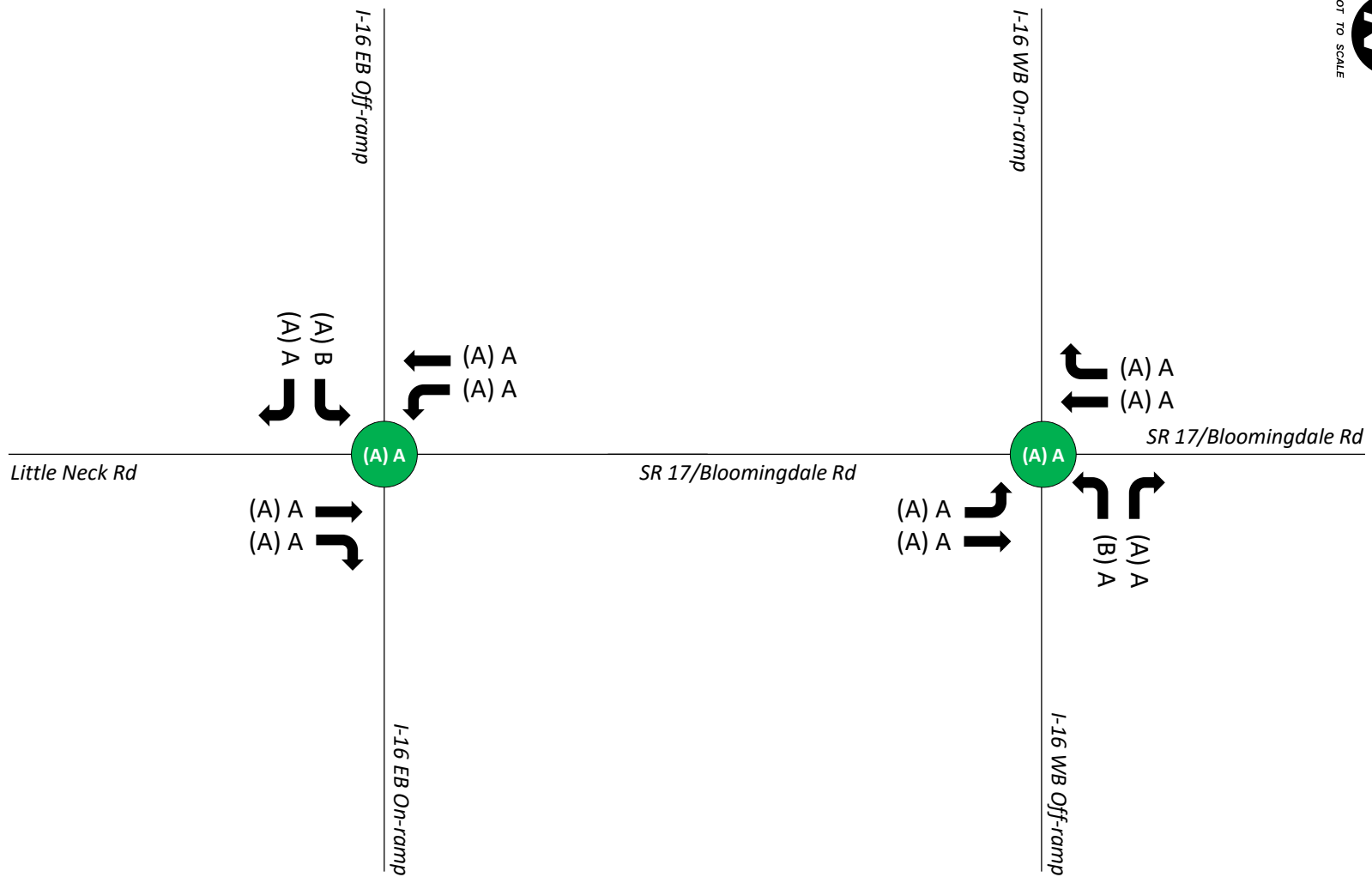
Existing Lane Configuration and Control



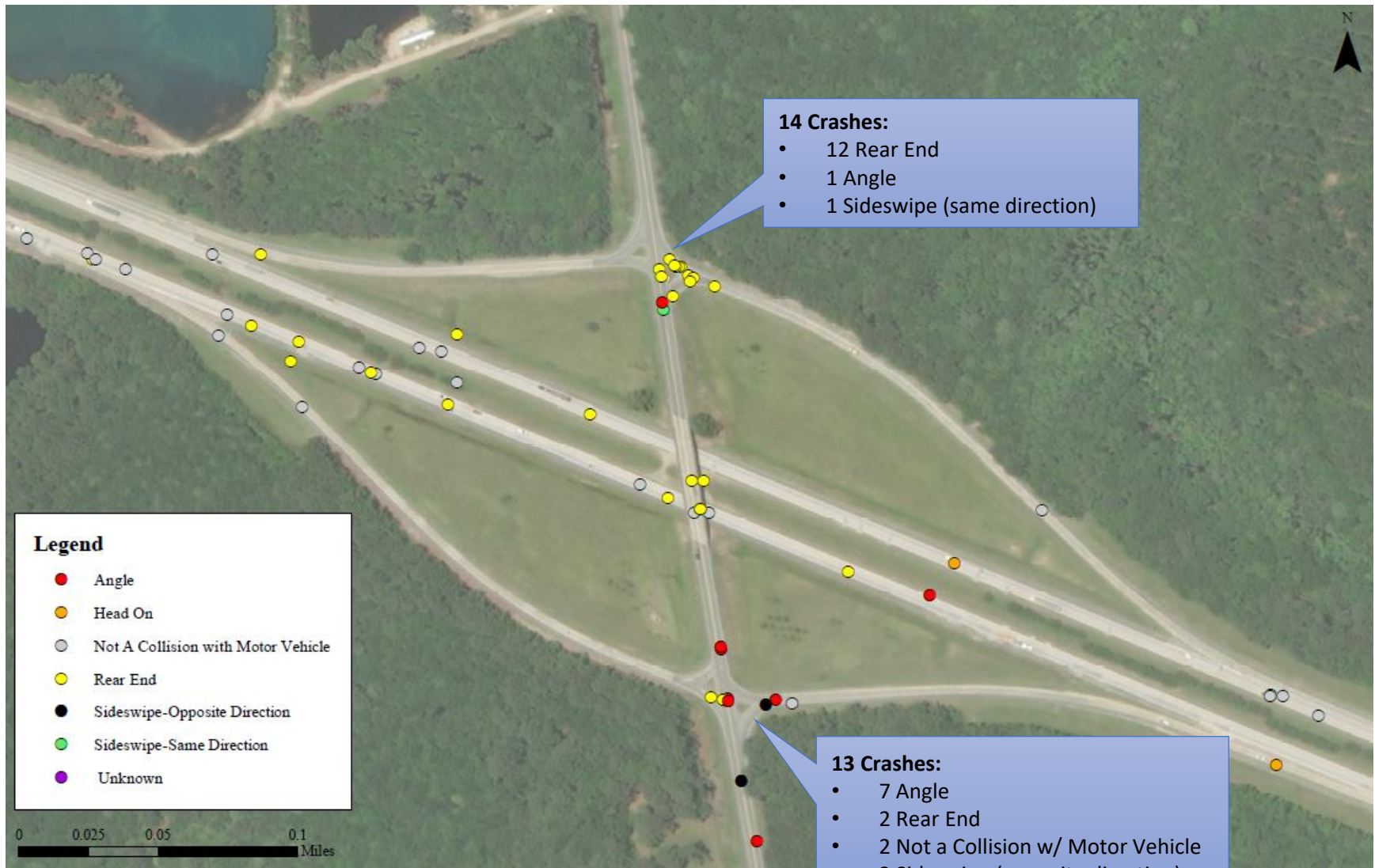
Existing (2018) AADT Volume



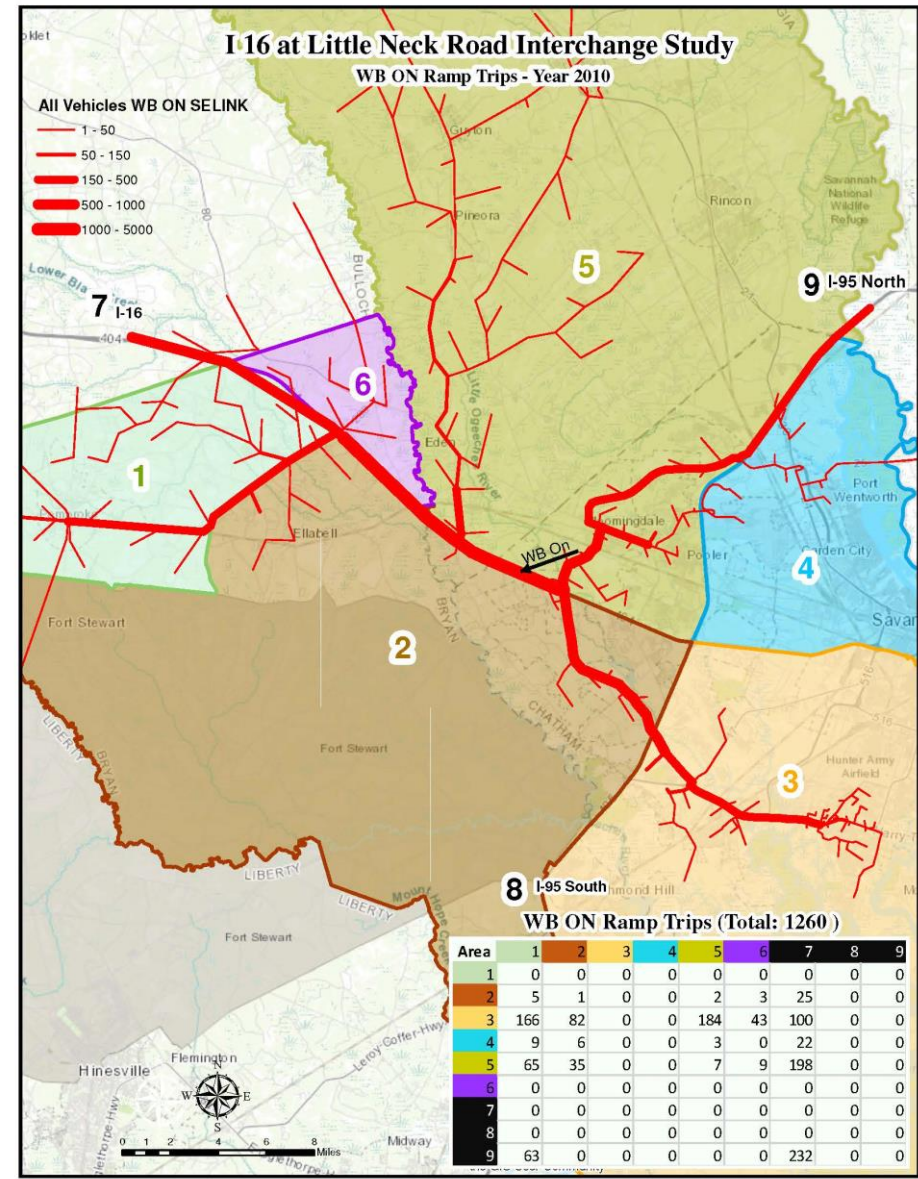
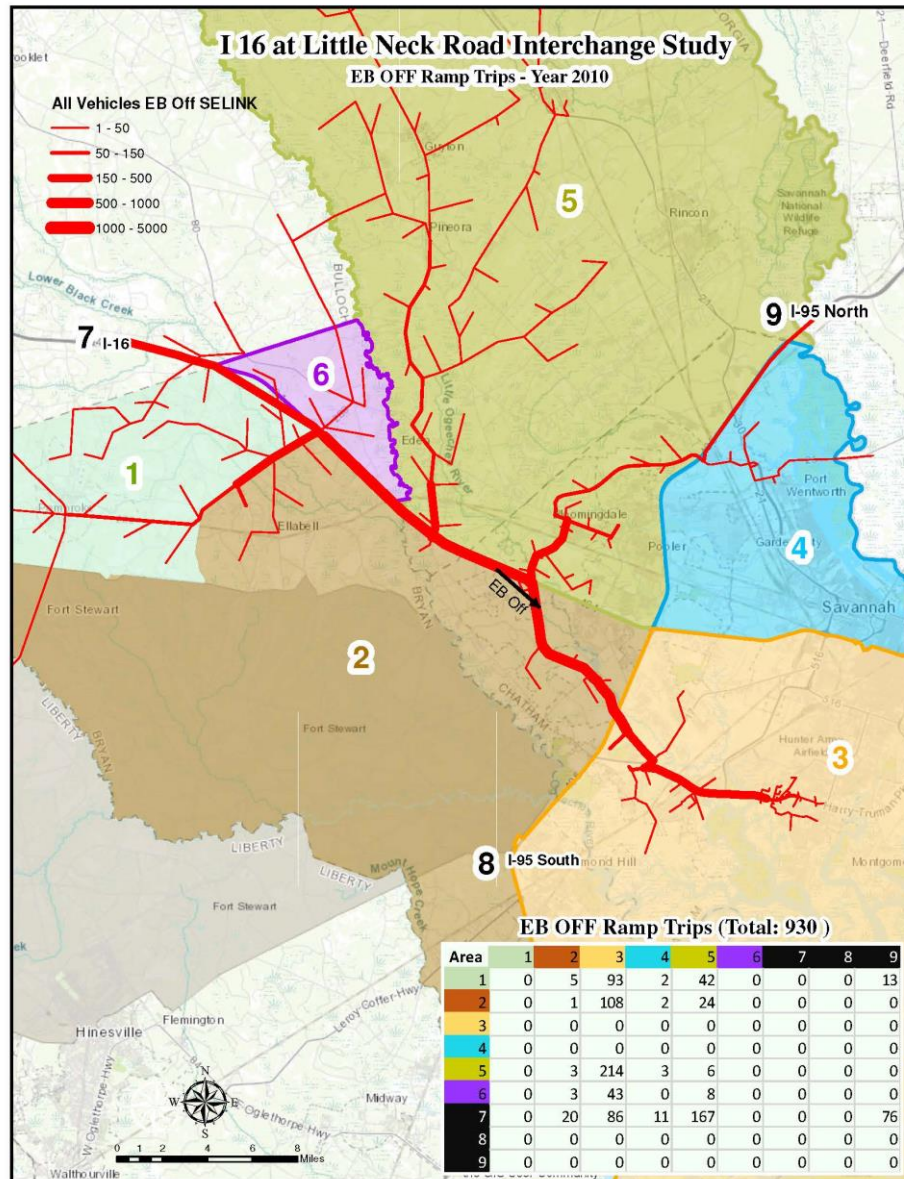
Existing (2018) Traffic Operations

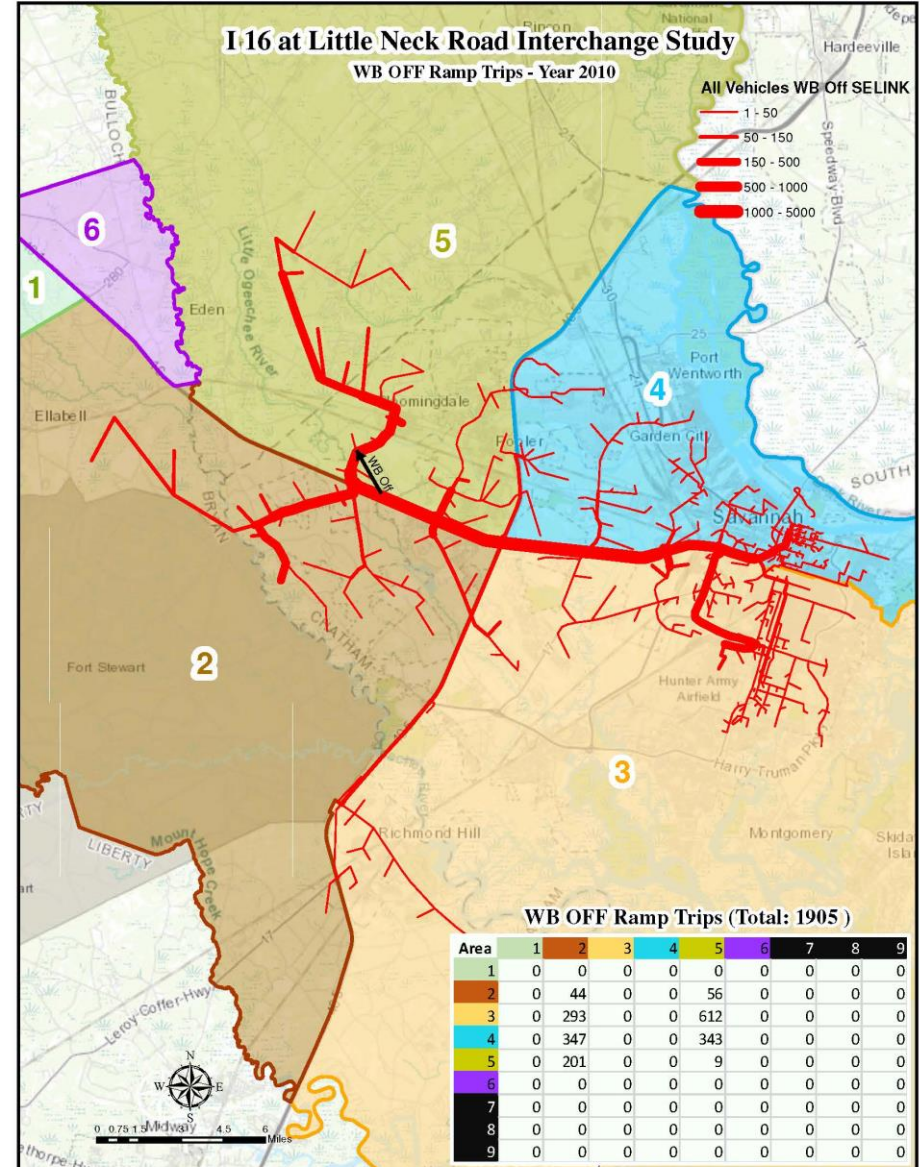


Crash Data, 2013-2017 (Study Interchange)

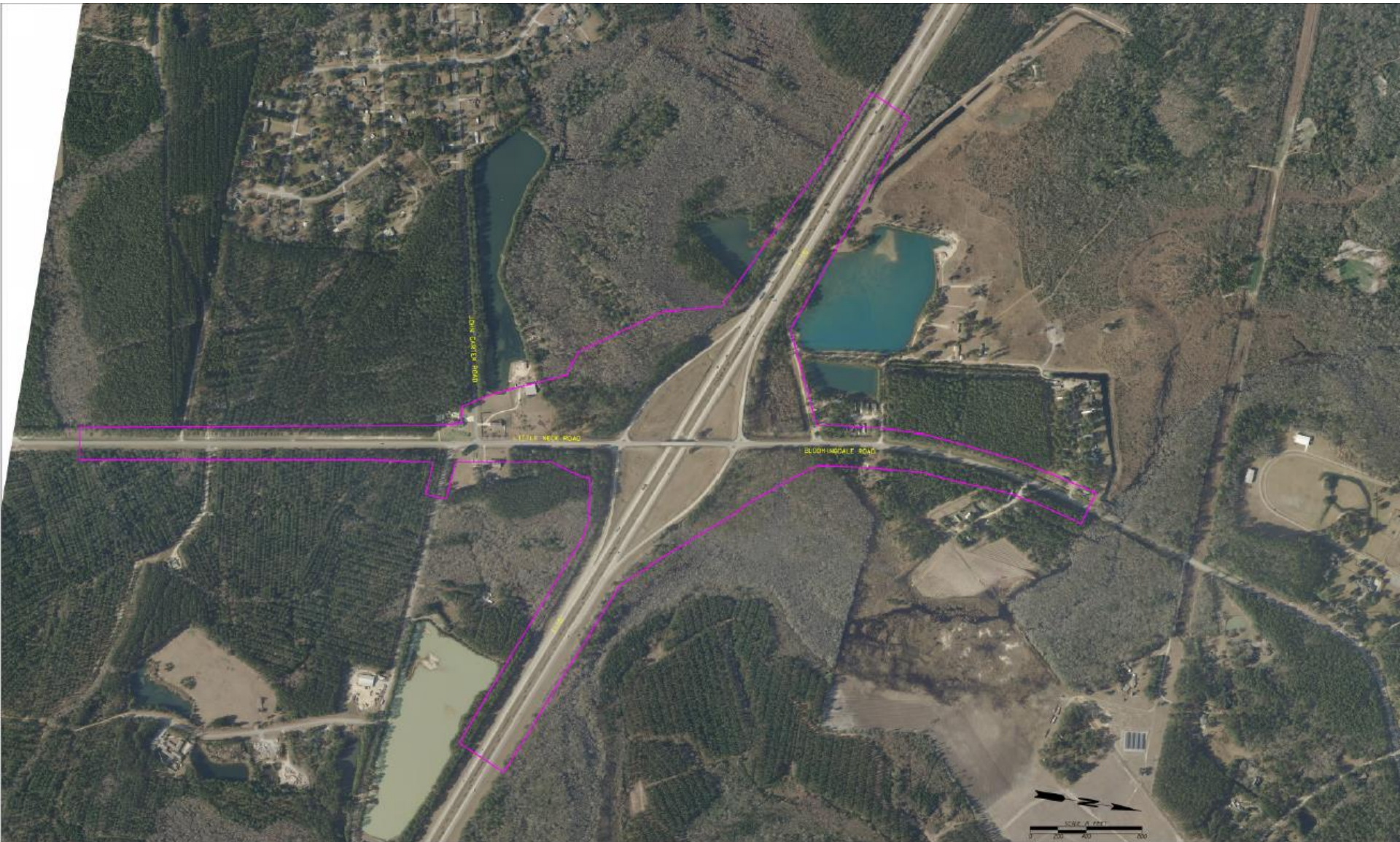


Existing Origin-Destination Flows (To/From the west)



[illegible]

Environmental Study Area



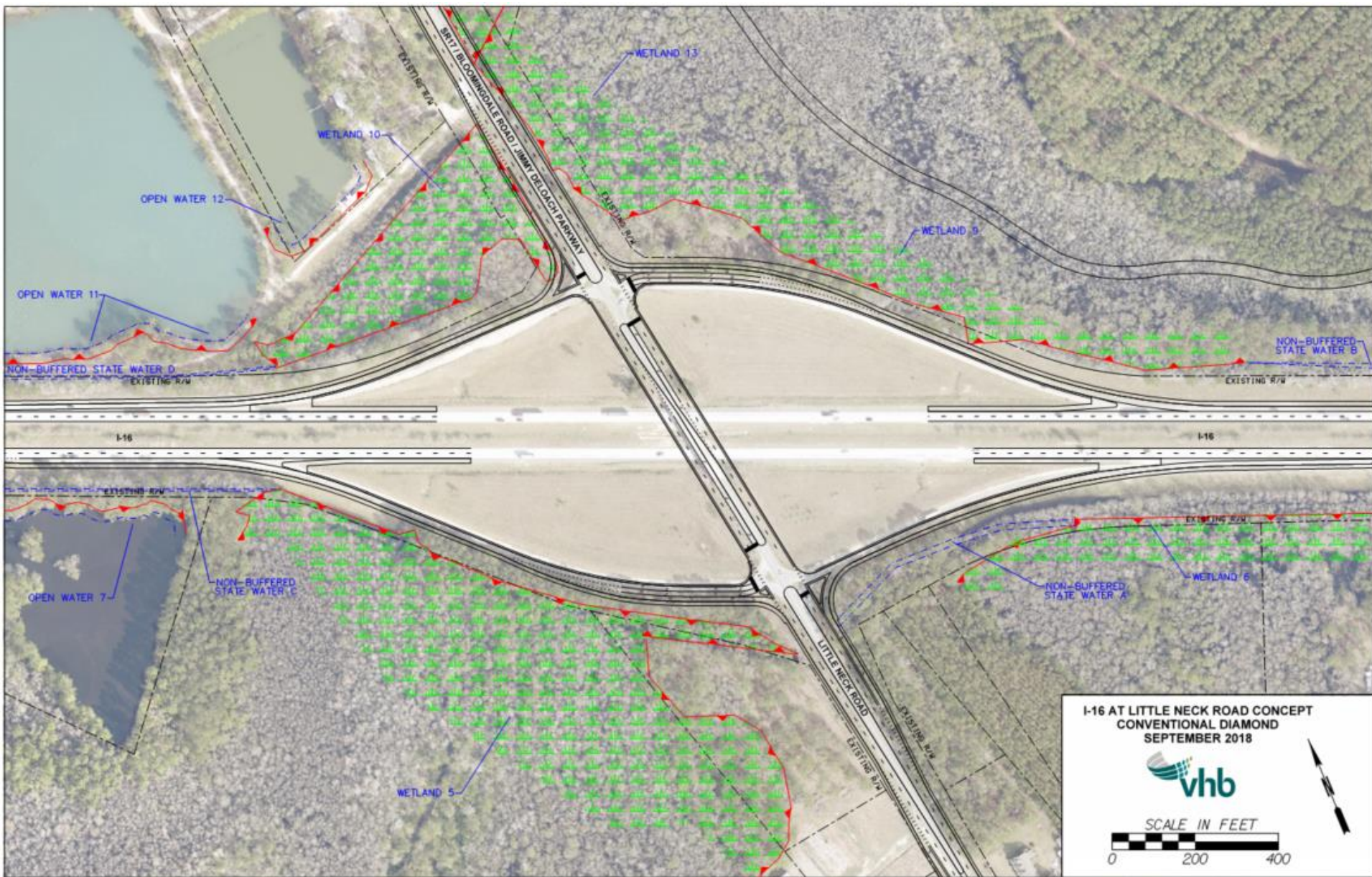
Initial Concepts



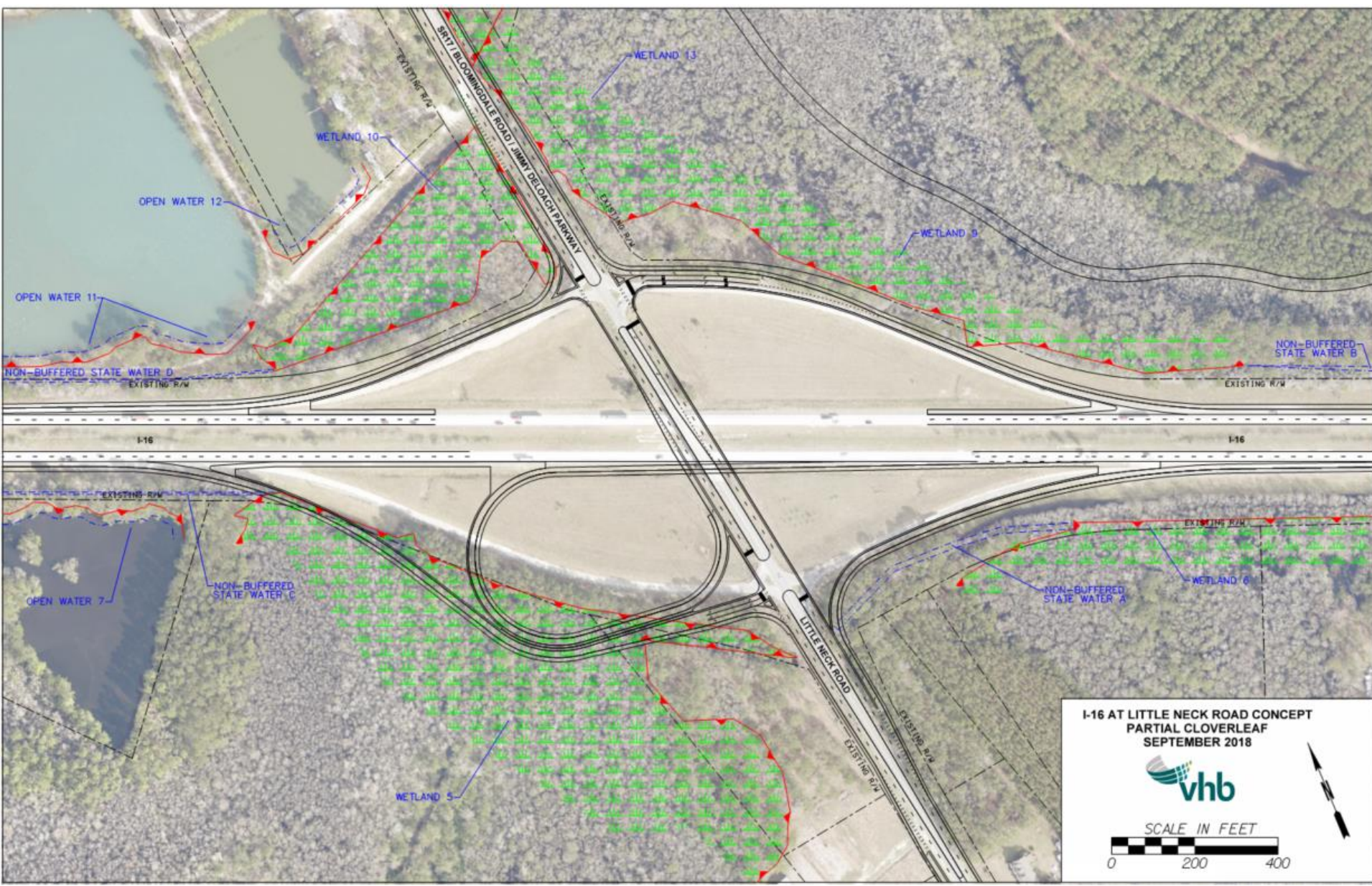
Initial Concepts

- Long-term ultimate concepts
- Consider short- and mid-term improvements
 - Traffic Signals
 - Ramp Reconstruction and Ramp Turn Lanes
 - Roundabouts
- Refinements to Concepts
 - Operational Analysis with design year traffic
 - Environmental Resource Impacts

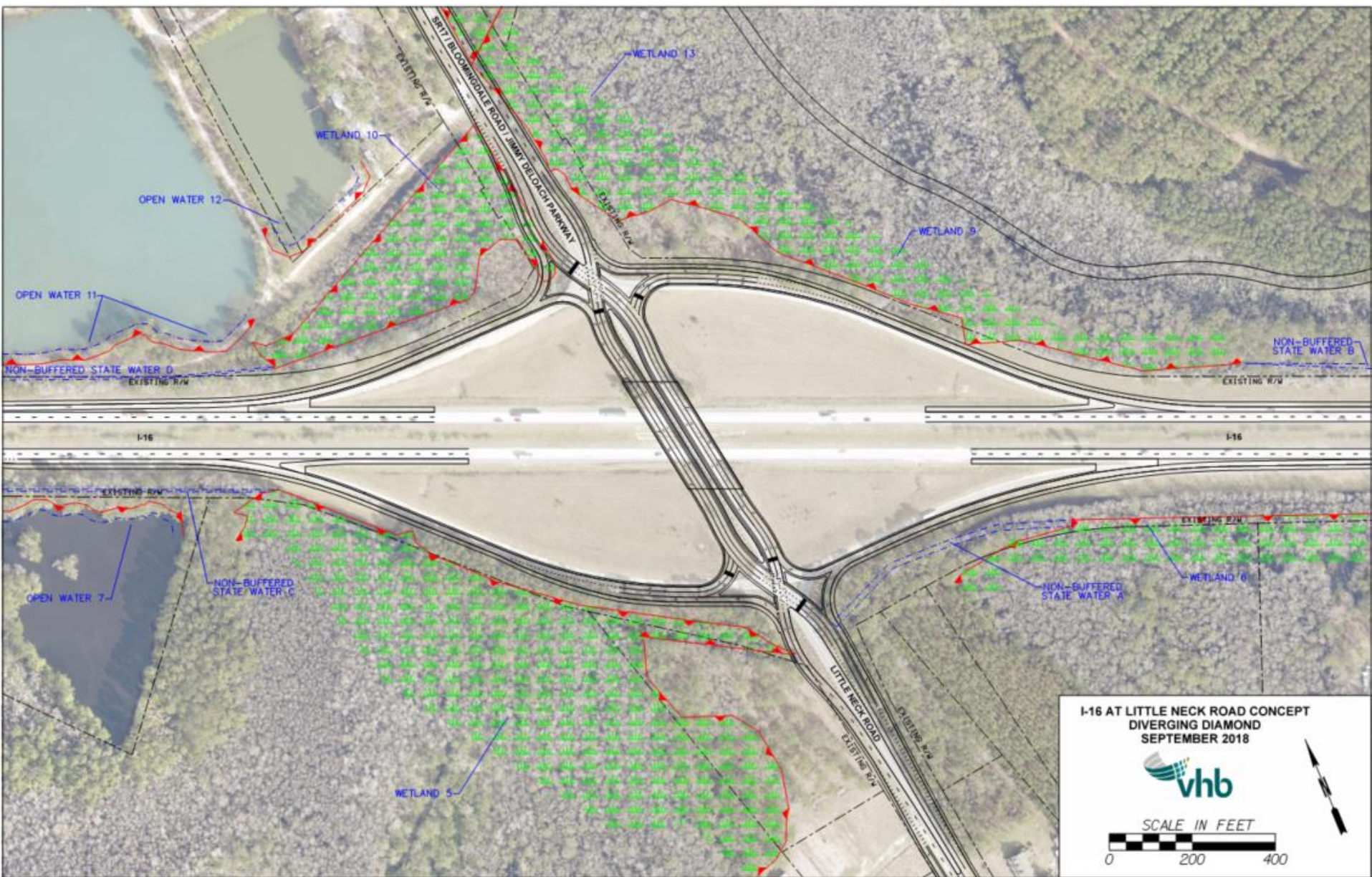
Conventional Diamond



Partial Cloverleaf



Diverging Diamond



CORE MPO Freight Transportation Plan



CORE MPO Freight Plan Recap

(<https://www.thempc.org/Core/Fp>)

Phase I – Chatham County only

- Policy
- Infrastructure
- Commodity Flow

Phase II – Chatham, Bryan and Effingham Counties

- Freight Needs Assessment
 - Freight and Goods Movement
 - Future Freight Growth
 - Regional Freight Profiles
 - Freight Network Bottleneck, Safety, and Security Issues
- Freight Land Use Analysis
- Economic Development Market Assessment
- Environmental and Community Impact Scan and Analysis
- Recommendations
 - Land use
 - Infrastructure



Freight Infrastructure Policy Recommendations

- **Maintain State of Good Repair of the existing freight system**
- **Encourage that safety improvements which accommodate truck traffic are included for projects on the freight transportation network**
- **Establish a Regional Multimodal Freight Transportation Network:**
 - **Grandfather State Freight Transportation Network – interstate and state highways;**
 - **Add local freight roadways onto CORE MPO Regional Freight Network – Jimmy DeLoach Parkway, Chatham Parkway, and Airways Avenue.**
- **Establish Truck Operational Hours along Bay Street (Downtown Savannah)**
- **Develop an ITS/Traffic Messaging System for communication with trucks to utilize alternative routes on the freight transportation network**
- **Develop corridor signal timing on major truck routes – example GDOT Regional Traffic Operations Program (RTOP)**
- **Develop a Wayfinding System between Port of Savannah and Interstate Corridors**
- **Continue the CORE MPO Freight Advisory Committee (FAC)**
- **Development of a Community Investment District for freight corridors**



Freight Infrastructure Project Recommendations

Completed or Under Construction

- PI# 0012722, SR 21 from SR 30 to I-95; Including Interchange (Diverging Diamond Interchange)
- I-95 at Airways Avenue Interim Improvements
- PI# 0002923, SR 25 Conn/Bay Street from I-516 to the Bay Street Viaduct (West Bay Street Widening)
- PI# 0007885, CS 602/CS 650/Grange Rd from SR 21 to E of SR 25
- PI# 0010553, CS651/Crossgate Rd from SR 21 to NS#734150L in Port Wentworth
- CR 0007128, Islands Expressway at Wilmington River/Bascule Bridge
- PI# 0007259, CR 984/Jimmy DeLoach Parkway @ SR 17 – Interchange (New Interchange at US 80)
- PI# 522790, Jimmy DeLoach Parkway Extension from US 80 to I-16
- Savannah Harbor Expansion Project (Deepening)



A photograph of a yellow and orange freight train engine pulling several green and yellow freight cars on a track under a blue sky.

Freight Infrastructure Project Recommendations Continued

A photograph of a bridge spanning a body of water, with a road and some vegetation visible on the bridge deck.

Transportation Projects under Development

A photograph of a large white commercial airplane on a tarmac, with a ground service vehicle (a mobile staircases) positioned next to it.

Bridge Replacement

- PI# 0013281, SR 21 Culvert Replacement at Pipemakers Canal
- PI# 0013282, SR 25 Culvert Replacement at Pipemakers Canal
- PI# 0013741, SR 25/US 17 Bridge Replacement at Sav. River
- PI# 0013742, SR 25/US 17 Bridge Replacement at Middle River

A photograph of a blue semi-truck driving on a road, with a yellow and black striped barrier in the foreground.

Interchange Reconstruction

- PI# 0012758, I-16 at I-95 Interchange Reconstruction
- PI# 0013727, I-16 Interchange Reconstruction @ SR 307

Road Widening

- PI# 521855, SR 26 from I-516 to CS 188/Victory Drive (US 80/Ogeechee Rd Widening)
- PI# 0012757, I-16 Widening – I-95 to I-516

Freight Infrastructure Project Recommendations Continued

Transportation Projects under Development

New Roadways

- PI# 0008358, I-516 @ CS/1503/DeRenne Avenue (DeRenne Blvd. Option)
- PI# 0006328, Brampton Road Connector from Foundation Drive to SR 21/SR 25/US 802
- PI# 0006700, New Roadway - Effingham Parkway – From SR 119/Effingham to SR 30/Chatham
- Benton Boulevard from Highlands Boulevard to Meinhard Road

Other Improvements

- PI# 0008359, East DeRenne from SR 204 to Harry S Truman Parkway (East DeRenne Avenue Improvements)
- PI# 0010236, SR 21 from CS 346/Mildred Street to SR 204 (West DeRenne Avenue Improvements)
- Mega Rail



Freight Infrastructure Project Recommendations Continued

Planned Transportation Projects (within CORE MPO MPA)

Interchange Projects

- Airways Avenue Flyover to Gulfstream Road
- I-95 at Airways Avenue Diverging Diamond Interchange
- I-95 and Airways Avenue Interchange Reconstruction
- I-95 at SR 21/Augusta Rd Interchange Reconstruction
- President Street/Truman Parkway Interchange Bridge and Ramp Reconstruction
- I-516/Lynes Parkway at I-16 Interchange Reconstruction
- I-16 at Chatham Parkway – Interchange improvements

Road Widening

- I-516/Lynes Parkway Widening from I-16 to Veterans Parkway
- I-516/Lynes Parkway Widening from Veterans Parkway to Mildred Street
- Airways Avenue Widening



Freight Infrastructure Project Recommendations Continued

Planned Transportation Projects (within CORE MPO MPA)

Other Roadway Improvements

- US 80/Victory Drive Improvements/Congestion Mitigation

Highway and Rail Improvements

- Savannah Port Rail Improvements to upgrade rail infrastructure and build grade separations as necessary
- SR 21 Grade Separation at CSXT Rail Crossing
- SR 25 Grade Separation at NS/CSX Rail Crossings
- Jasper Port



Freight Infrastructure Project Recommendations Continued

Planned Transportation Projects (within CORE MPO MPA)

Other Roadway Improvements

- US 80/Victory Drive Improvements/Congestion Mitigation

Highway and Rail Improvements

- Savannah Port Rail Improvements to upgrade rail infrastructure and build grade separations as necessary
- SR 21 Grade Separation at CSXT Rail Crossing
- SR 25 Grade Separation at NS/CSX Rail Crossings
- Jasper Port



Freight Infrastructure Project Recommendations Continued

Planned Transportation Projects (within CORE MPO MPA)

Operational Improvements

- Chatham Parkway Improvements from I-16 to US 80
- Intersection Operational Improvements Ogeechee Road (US 17/SR 25) at Chatham Parkway
- Operations and Safety Enhancements – Dean Forest Road/Bourne Road (SR 307) from Port Authority to I-16
- Intersection Safety Beacon – SR 25 N Coastal Highway at Main Mill Entrance (Port Entrance)
- Safety Improvements – South of SR 25 at Crossgate intersection in Port Wentworth (On-street angled parking on truck route)
- Safety Improvements – South of SR 25 at Aberfeldy Street intersection in Port Wentworth (On-street angled parking on truck route)
- Intersection Safety Beacon – SR 17 at SR 30
- Operations and Safety Enhancements – SR 21 Corridor
- Operations and Safety Enhancements - US 80 Corridor



Freight Infrastructure Project Recommendations Continued

Planned Transportation Projects (within CORE MPO MPA)

Operational Improvements (continued)

- Intersection Operational Improvements - SR 25 at SR 30
- Intersection Operational Improvements - SR25 at Brampton Road
- Intersection Operational Improvements - SR 25 at SR 21 – Right Turn Lane
- Intersection Operational Improvements – SR 30 at SR 21 – Right hand turn from US 80 eastbound to SR 21 southbound
- Interchange Operational Improvements – US 80 at I-95– Extend left turn lane across light for turn onto northbound I-95
- Intersection Operational Improvements – SR 30 – add right hand turn lane (westbound) across from Dublin Road into Fleet Pride property entrance
- Intersection Operational Improvements – US 80 at SR 307 – Widen right hand turn from US 80 eastbound to SR 307 southbound
- Intersection Operational Improvements – US 80 at 8th Street/Alfred Street – right hand turn from US 80 eastbound to 8th Street/Alfred Street southbound; right hand turn form 8th Street/Alfred Street to US 80 eastbound
- Intersection Operational Improvements – US 80 at West Lathrop Avenue – Right hand turn from US 80 southbound at West Lathrop Avenue



Freight Infrastructure Project Recommendations Continued

Planned Transportation Projects (within CORE MPO MPA)

Operational Improvements (continued)

- Operational Improvements - Jimmy DeLoach Pkwy – add right hand turn lane westbound Jimmy DeLoach Pkwy to Expansion Blvd northbound
- Operational Improvements - Jimmy DeLoach Pkwy – add right hand turn lane westbound Jimmy DeLoach Pkwy to Logistics Way northbound
- Operational Improvements - Jimmy DeLoach Pkwy – add right hand turn lane eastbound Jimmy DeLoach Pkwy to Port Logistics Center Crossroads southbound (near SR 21)
- Operational Improvements - Jimmy DeLoach Pkwy – add right hand turn lane westbound Jimmy DeLoach Pkwy to Port City entrance northbound
- Build additional tracks for storage, double-tracking or re-configuring storage leads at Garden City Terminal
- Increase Garden City Terminal Yard capacity, track lengths, or double tracking



CORE MPO Freight Plan

Contact:

Wykoda Wang

wangw@thempc.org

912-651-1466



CORE MPO Freight Report Card

How are we doing?

PI #	DESCRIPTION	Federal Performance Measures							Project Costs in FY 2018 - 2021 TIP	Freight Project Costs in FY 2018 - 2021 TIP
		Safety	Pavement and Bridge	Congestion	Freight	Air Quality	Transit Safety	Transit Asset management		
12757	I-16 FROM I-95 TO I-516	X	X	X	X				\$265,312,102	\$265,312,102
12758	I-16 @ I-95 INTERCHANGE RECONSTRUCTION	X	X	X	X				\$0	\$0
13741	SR 25/US 17 @ SAVANNAH RIVER IN PORT WENTWORTH	X	X		X				\$30,645,255	\$30,645,255
13742	SR 25/US 17 @ MIDDLE RIVER IN PORT WENTWORTH	X	X		X				\$30,310,695	\$30,310,695
15704	SR 404 SPUR/US 17 @ BACK RIVER	X	X	X	X				\$3,620,000	\$3,620,000
15705	SR 404 SPUR/US 17 FM NE OF SAVANNAH HARBOR PKWY TO BACK RIVER	X	X	X	X				\$2,800,000	\$2,800,000
7128	CR 787/ISLANDS EXPRESSWAY @ WILMINGTON RIVER/BASCULE BRIDGE	X	X	X					\$56,360,682	
7631	TRUMAN LINEAR PARK TRAIL - PHASE II-A					X			\$4,906,998	
15306	TRUMAN LINEAR PARK TRAIL - PHASE II-B					X			\$1,410,731	
8358	I-516 @ CS 1503/DERENNE AVE	X		X	X				\$11,919,159	\$11,919,159
10028	CS 1097/DELESSEPS/LA ROCHE AVE FM WATERS AVE TO SKIDAWAY RD		X			X			\$5,600,000	
13727	I-16 @ SR 307	X	X	X	X				\$28,141,494	\$28,141,494
13280	CAT VEHICLE PURCHASE FOR 2018						X	X	\$637,500	
15977	CAT- Bus Reliability Initiative						X	X	\$1,687,500	
15978	CAT - Maintenance Equipment Upgrades						X	X	\$752,923	
15979	CAT - Electric Bus Conversion Initiative					X	X	X	\$2,000,000	
532370	SR 144 EB FROM S OF CR 100 TO S OF CR 154	X	X	X					\$14,341,805	
13273	CAT Transit Intelligent System						X	X	\$225,810	
6328	Brampton Road Conn from SR 21/SR 25 to SR 21 SPUR			X	X				\$64,350,423	\$64,350,423
6700	EFFINGHAM PKWY FM CR 156/BLUE JAY/EFFINGHAM TO SR 30/CHATHAM			X					\$42,206,134	
521855	SR 26 FROM I-516 TO CS 188/VICTORY DRIVE	X	X	X	X				\$25,688,481	\$25,688,481
8359	EAST DERENNE FROM SR 204 TO HARRY S TRUMAN PKWY	X	X	X	X				\$200,000	\$200,000
10236	SR 21 FROM CS 346/MILDRED STREET TO SR 204	X	X	X	X				\$700,000	\$700,000
13282	SR 25 @ Pipemaker Canal- Culvert Replacement	X	X		X				\$8,140,000	\$8,140,000
10560	SR 26 FM JOHNNY MERCER TO OLD US 80; INC BULL RVR&LAZARETTO	X	X						\$775,000	
Transit	Section 5307, Section 5337, Section 5339, Ferry boat program						X	X	\$43,599,395	
Lump Sum	Lump sum PROJECTS	X	X	X	X	X			\$64,246,000	\$32,055,000
	Total								\$710,578,087	\$503,882,609
	Freight Percentage of Total									70.91%

So how are we doing?

Approximately 71% of current transportation \$ are programmed for projects on major freight routes (per current TIP.

Are we addressing all known freight needs?

What is missing?

Other freight choke points?

Other member lead projects?

Policies and strategies?

So how are we doing?

Approximately 71% of current transportation \$ are programmed for projects on major freight routes (per current TIP.

Are we addressing all known freight needs?

What is missing?

Other freight choke points?

Other member lead projects?

Policies and strategies?

CORE MPO Contacts:

Mark Wilkes, P.E., AICP
CORE MPO Director
wilkesm@thempc.org
912-651-1477

Stephanie Rossi
Mobility 2045 Project Manager
rossis@thempc.org
912-651-1476

Wykoda Wang
CORE MPO Administrator/TIP Manager
wangw@thempc.org
912-651-1466

James Small
Transportation Coordinator
smallj@thempc.org
912-651-1454

