

# SR 21 Access Management Study

*Join us in the creation of a vision for SR 21 and the development of recommendations to address the corridor's operations and safety, multimodal improvements, streetscape elements, and economic development.*

## Community Meeting

Thursday, Dec. 9, 2021

5:30 p.m.

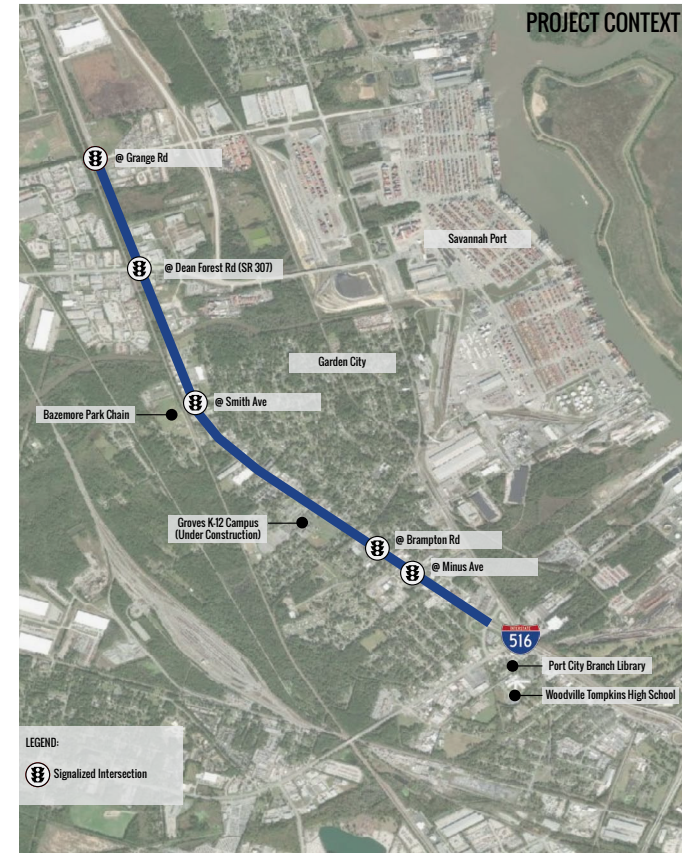
Virtual Meeting via GoToMeeting

<https://global.gotomeeting.com/join/185721293>

Join us for a conversation about proposed solutions for the SR 21 Corridor.

This meeting will be held in conjunction with the CORE MPO Citizens Advisory Committee (CAC) meeting, beginning at 5:30 p.m. No registration is required to join the meeting.

Scan to  
Join the  
Meeting



The CORE MPO, in collaboration with the City of Garden City, is undertaking the State Route 21 Access Management Study from I-516 to Grange Road.



[www.thempc.org/CORE](http://www.thempc.org/CORE)  
(912) 651-1440