



SR 21 Access Management Study

Project Advisory Group Meeting

May 13, 2021



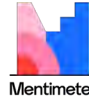
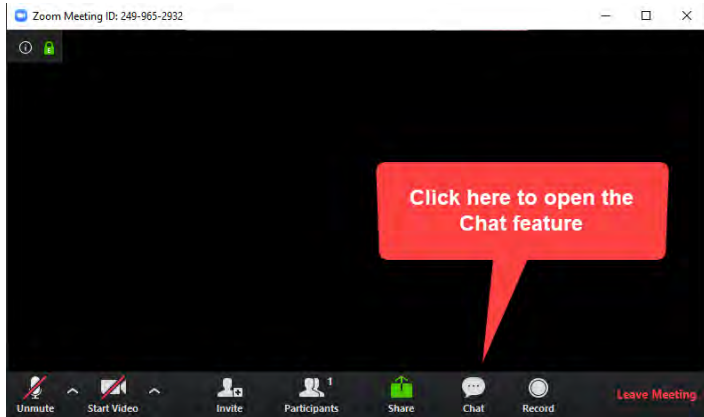
Agenda

- ▶ Project Overview
- ▶ Project Timeline
- ▶ Role of the Project Advisory Group
- ▶ Existing Conditions
- ▶ Access Management Overview
- ▶ Live Polling
- ▶ Next Steps

Virtual Meeting Housekeeping

During Presentation

- All participants will be on mute throughout the presentation. Speaking participants will un-mute when appropriate.
- Questions can be posted via the Zoom Q&A chat window.



Live Polling via Mentimeter

www.menti.com from your phone or laptop

Code: **2539 0615**



Introduction to the Team



Project Overview

The background features several abstract, 3D-style geometric shapes. On the left, a large, dark blue vertical bar is partially visible. On the right, there are three overlapping shapes: a yellow bar at the top, a dark blue bar in the middle, and a light cyan bar at the bottom. The overall aesthetic is modern and professional.

Project Background



SR 21/Augusta Road Characteristics:

- ▶ Provides Direct Access to I-95 and I-516
- ▶ Parallels the Savannah Port
- ▶ Significant Freight Traffic
- ▶ Historically Retail Corridor
- ▶ Several Commercial Driveways
- ▶ New K-12 Campus at Groves High School
- ▶ Designated Urban Redevelopment Area

Purpose & Goals



Why is this study needed?

- Several driveways & conflict points
- High crash rates
- Fatalities & pedestrian crash experience
- Lack of infrastructure for pedestrians
- Traffic congestion at intersections
- Construction of new K-12 Campus
- Spur redevelopment in area



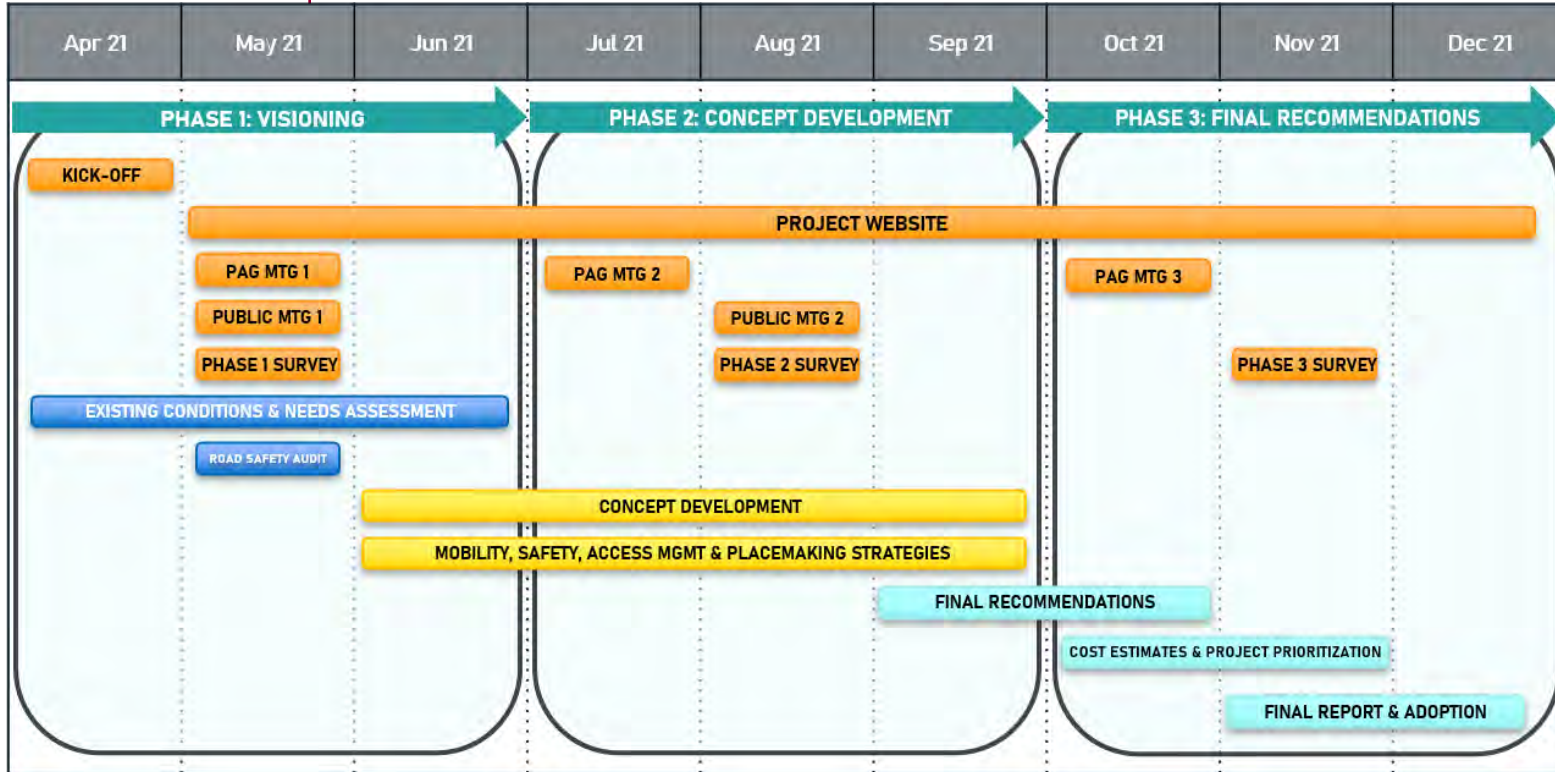
What are the goals of this study?

- Promote safety for all travel modes
- Reduce crash experience
- Improve traffic flow
- Improve multimodal infrastructure
- Support current and future demand
- Support economic growth
- Improve quality of life

Study Timeline



PAG Meeting #1
May 13, 2021

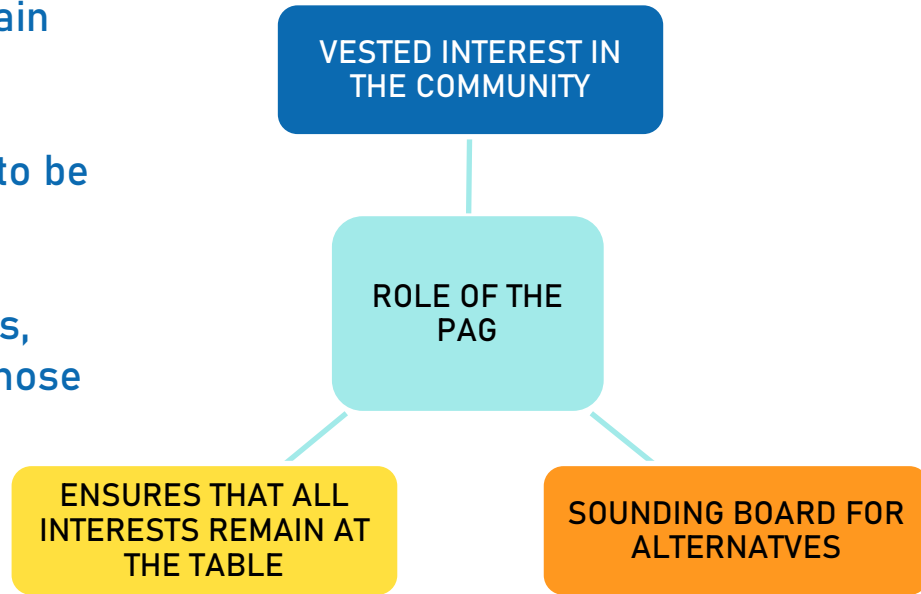


The image features a dark blue background. On the left, a large, semi-transparent blue number '2' is partially visible. In the center, the text 'Role of the PAG' is written in white. On the right side, there are several overlapping geometric shapes: a yellow triangle pointing downwards, a blue trapezoid, and a light blue trapezoid, all appearing to be part of a larger, partially cut-off graphic.

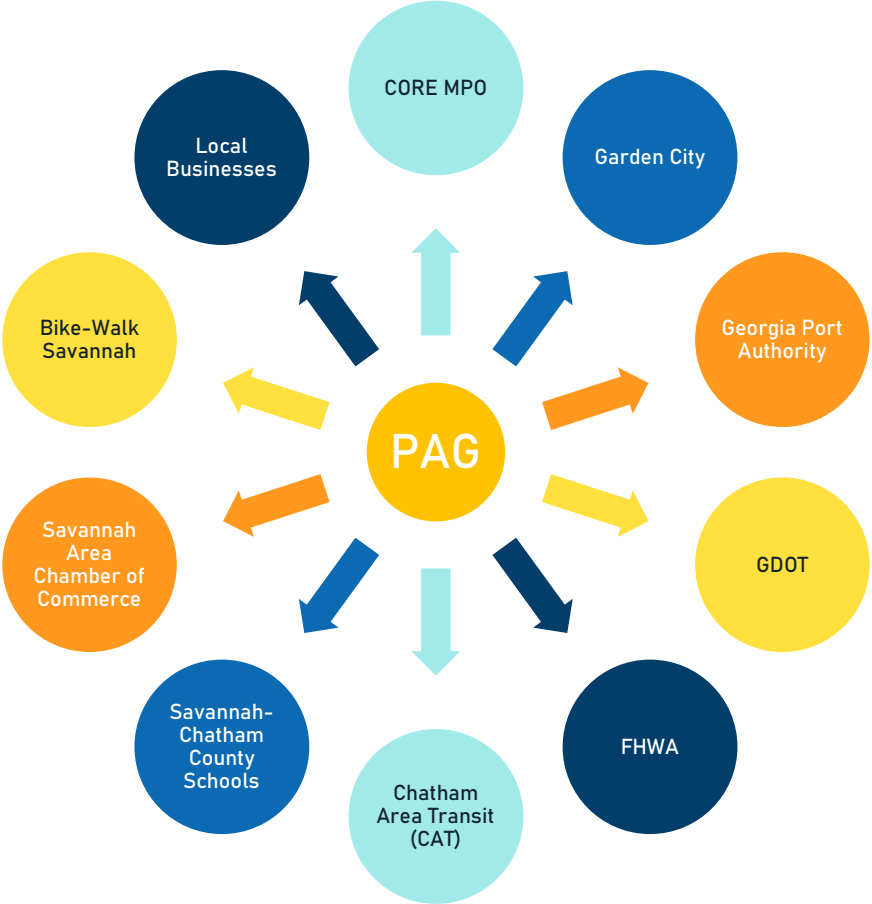
Role of the PAG

Project Advisory Group (PAG)

- ▶ Ensures that all interests remain at the table
- ▶ Enables the planning process to be transparent
- ▶ Champions the needs, interests, opinions and perspectives of those who are most invested in its outcome



Project Advisory Group (PAG)





Existing Conditions



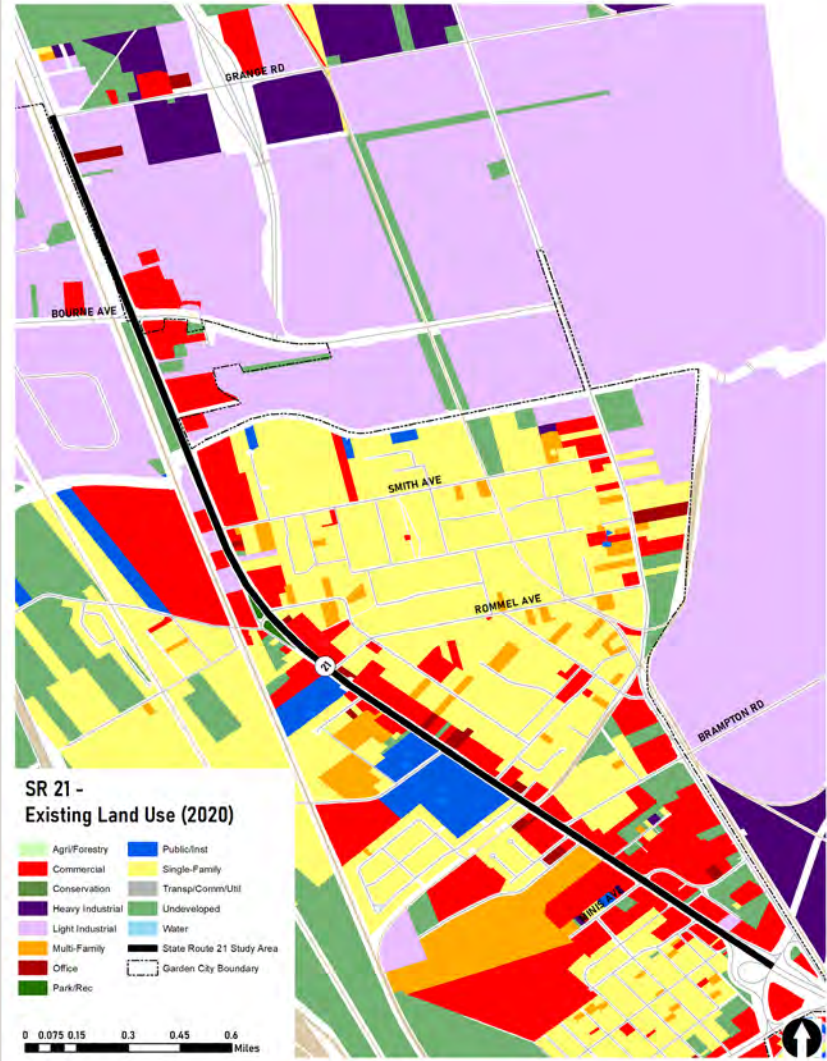
Roadway

- ▶ Classification: Principal Arterial
- ▶ 6 lanes with center TWLTL
- ▶ Provides access to I-516 and I-95
- ▶ 40,350 vehicles per day
- ▶ Approximately 9% heavy vehicles
- ▶ 140 ft – 150 ft Right-of-Way
- ▶ 45 mph speed limit



Existing Land Use

- ▶ Primarily commercial fronting corridor
- ▶ Mercer Middle School & Groves High School
- ▶ Bazemore Park
- ▶ Single Family Homes east & west of corridor
- ▶ Industrial towards northern end



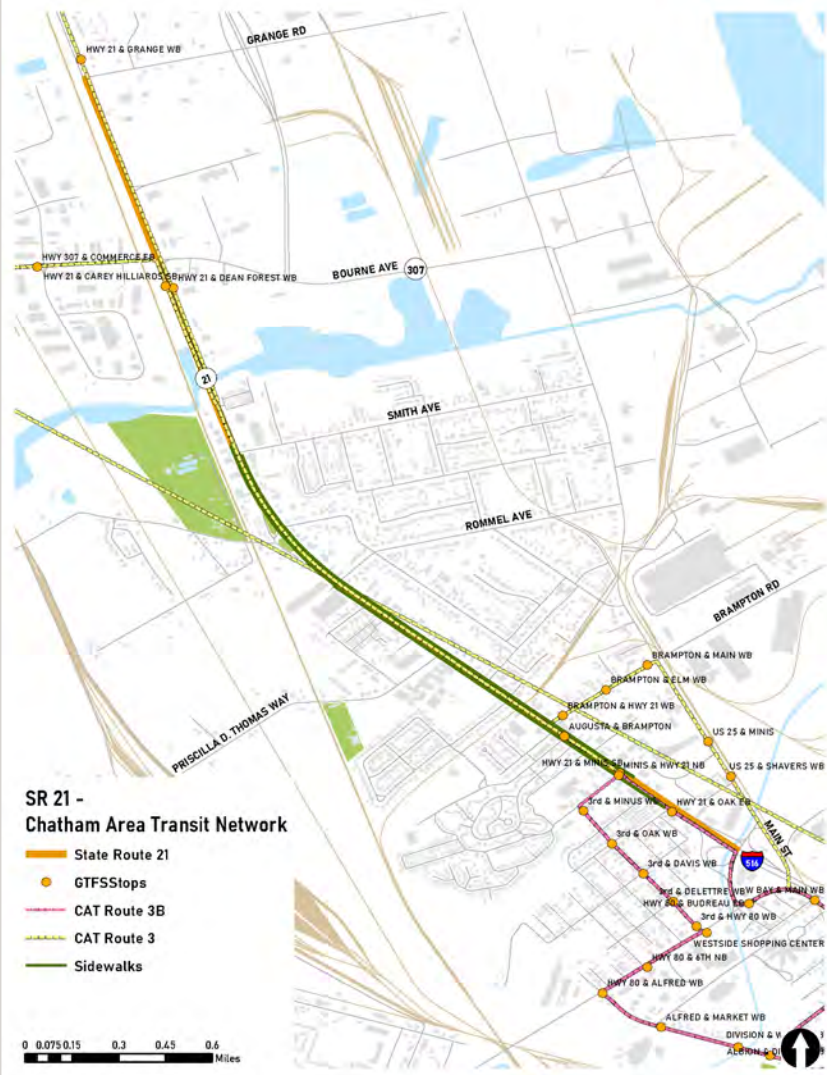
SR 21 - Existing Land Use (2020)

Agri/Forestry	Public/Inst
Commercial	Single-Family
Conservation	Transp/Comm/Util
Heavy Industrial	Undeveloped
Light Industrial	Water
Multi-Family	State Route 21 Study Area
Office	Garden City Boundary
Park/Rec	

0 0.075 0.15 0.3 0.45 0.6 Miles


Multimodal Facilities


- ▶ Pedestrian Bridge near Mercer Middle School
- ▶ Transit primarily south of Brampton Road
- ▶ Sidewalks present south of Smith Avenue
- ▶ No Sidewalks north of Smith Avenue
- ▶ No designated bicycle facilities
- ▶ Segments designated a part of East Coast Greenway



Safety

Between 2016 and 2020 there were:

 1,187 Crashes
~ 20/month

 343 Injury Crashes

 13 Pedestrian Crashes

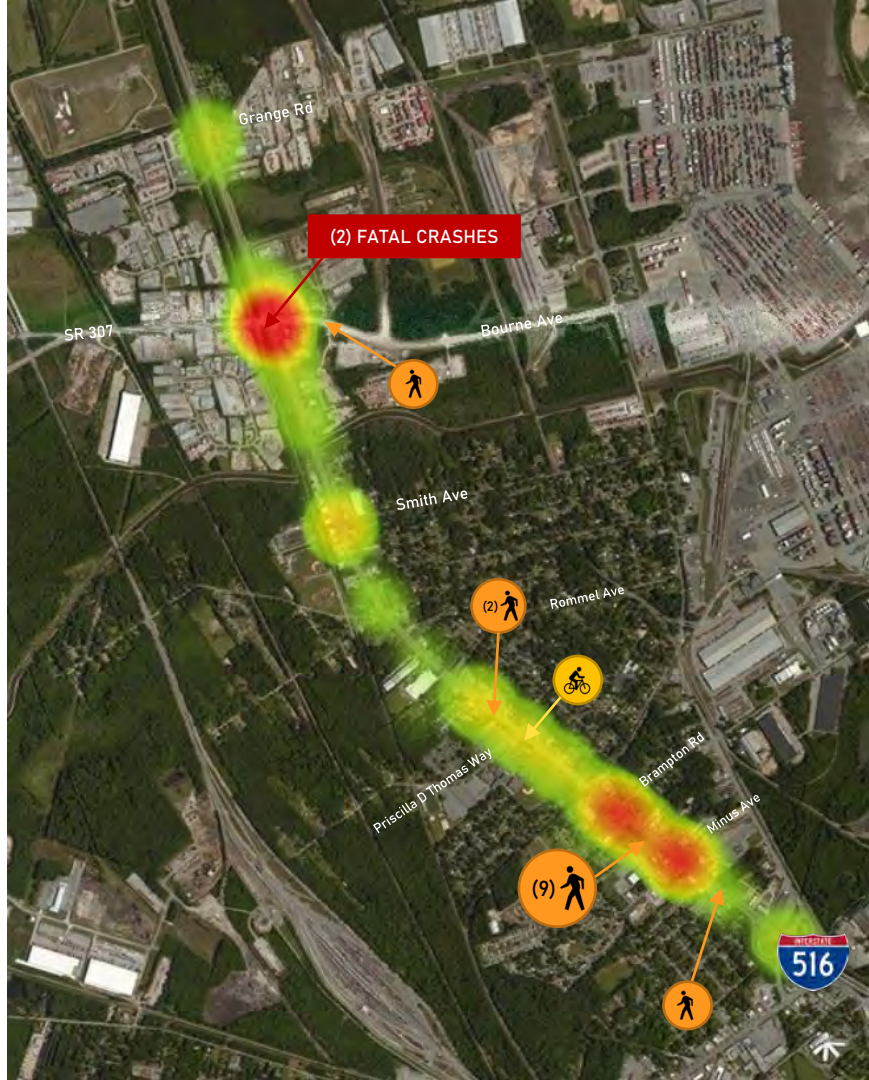
 1 Bicyclist Crash

51% Rear End Crashes

27% Angle Crashes

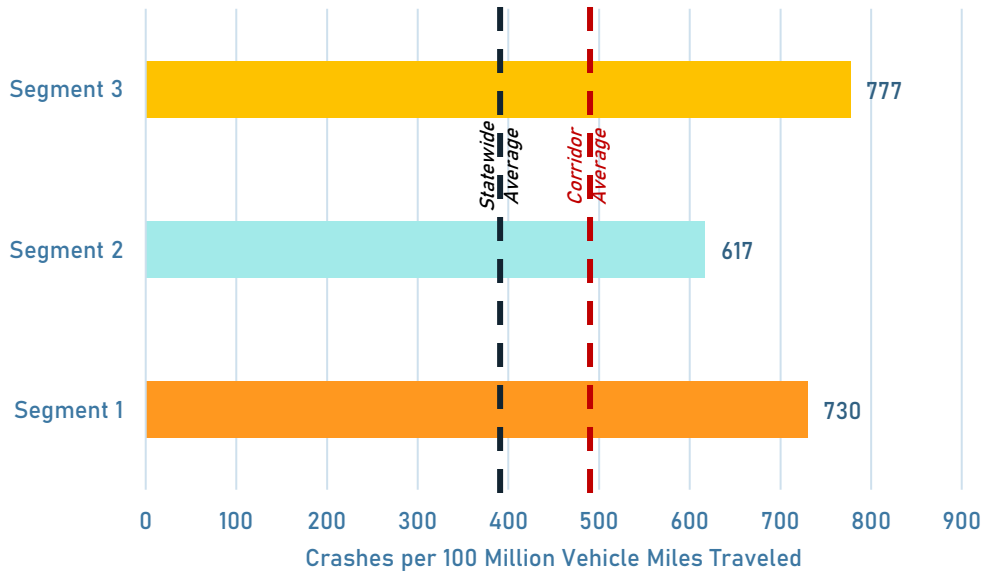
2 FATAL CRASHES
Both Involved Tractor Trailers

Both Rear End Crashes

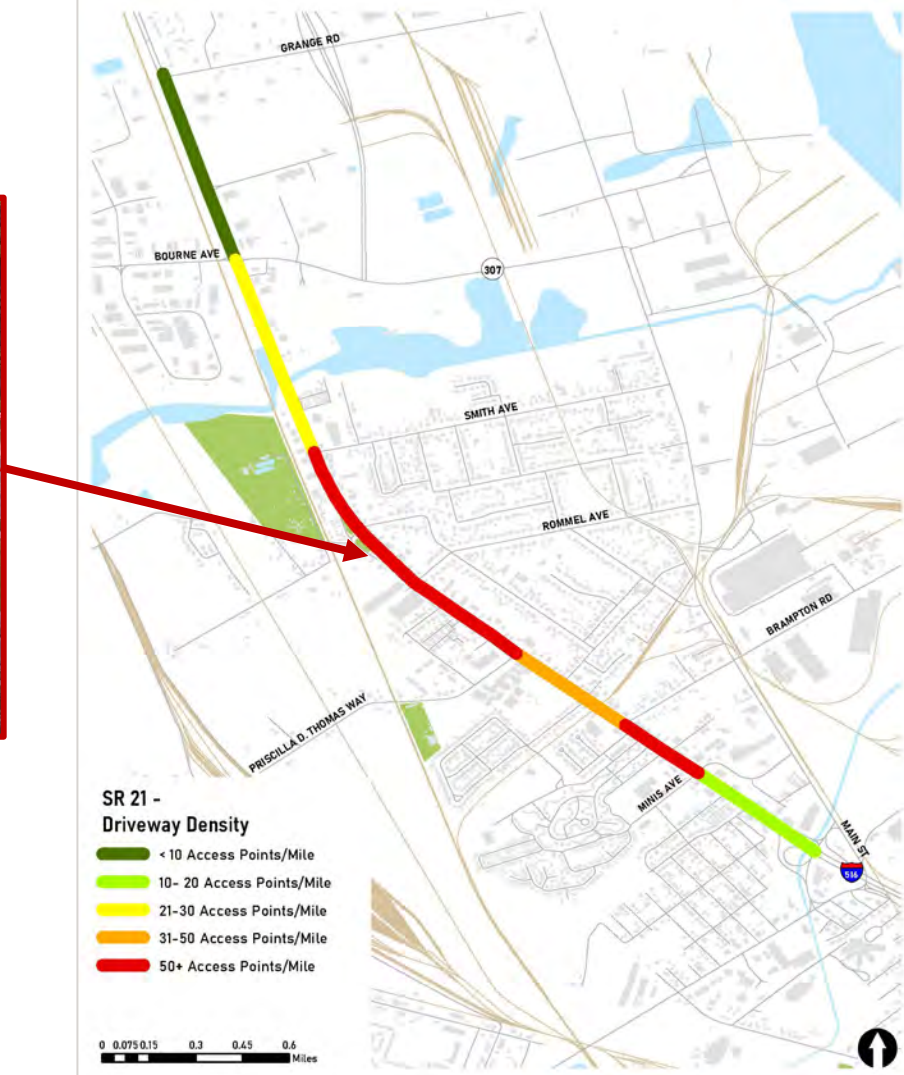
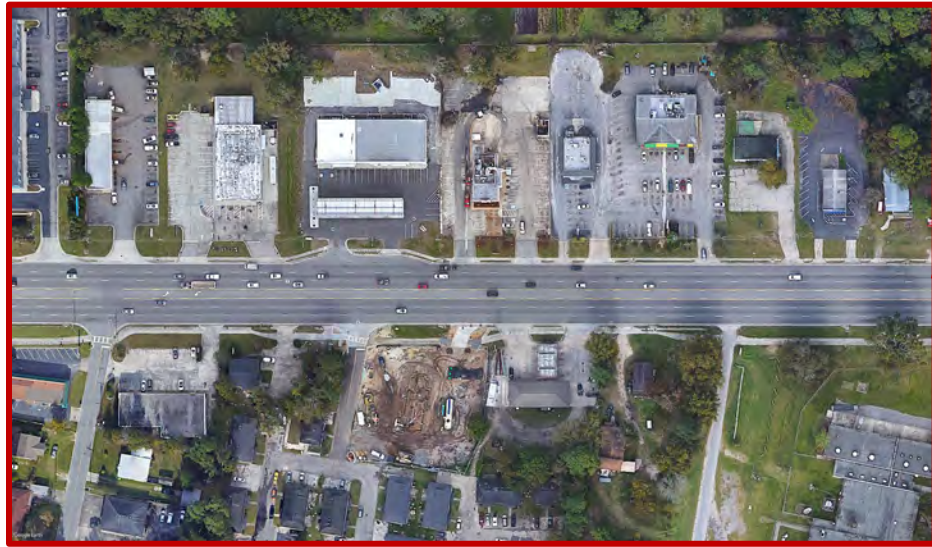


Safety

Crash Rates along SR 21/Augusta Road



Access Point Density



- SR 21 - Driveway Density**
- < 10 Access Points/Mile
 - 10- 20 Access Points/Mile
 - 21-30 Access Points/Mile
 - 31-50 Access Points/Mile
 - 50+ Access Points/Mile



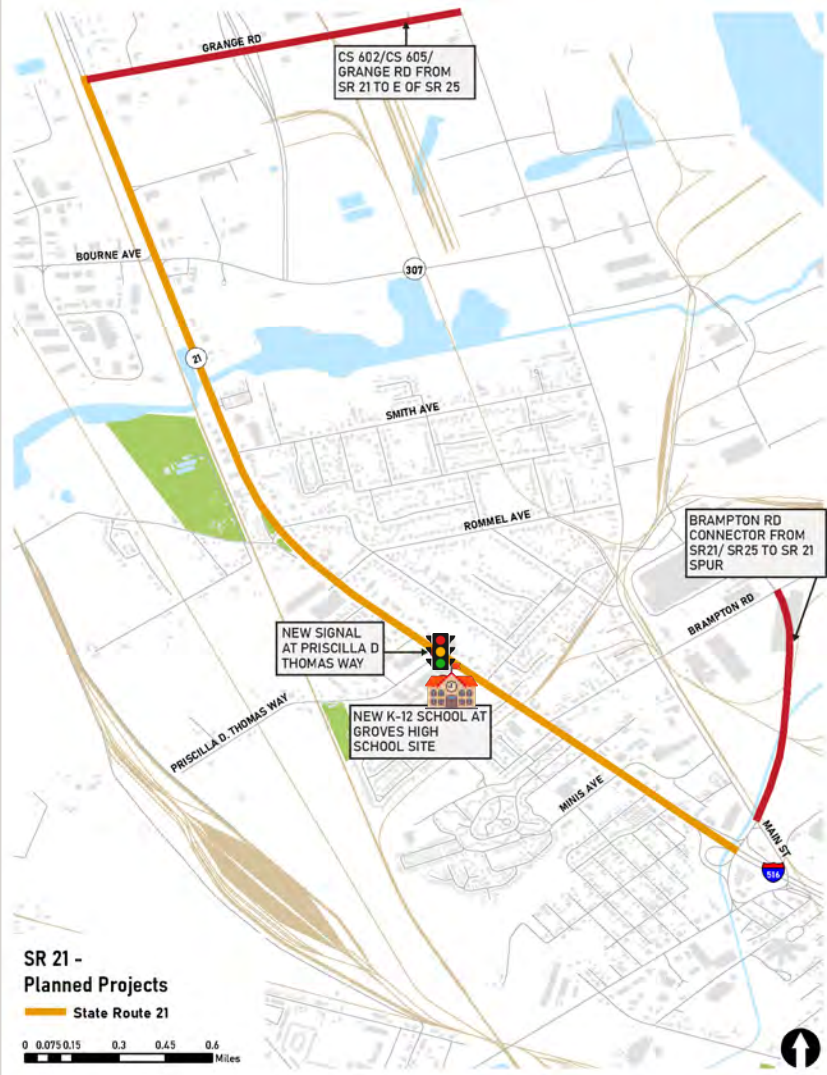
High access point density on arterial roads can cause traffic flow and safety issues.

Planned Projects

- ▶ New K-12 School at Groves High School Site
- ▶ New Signal at Priscilla D Thomas Way
- ▶ Port Expansion & Industrial Developments
- ▶ Coordination with SR 307 Corridor Study



New Groves K-12 Campus
Conceptual Layout





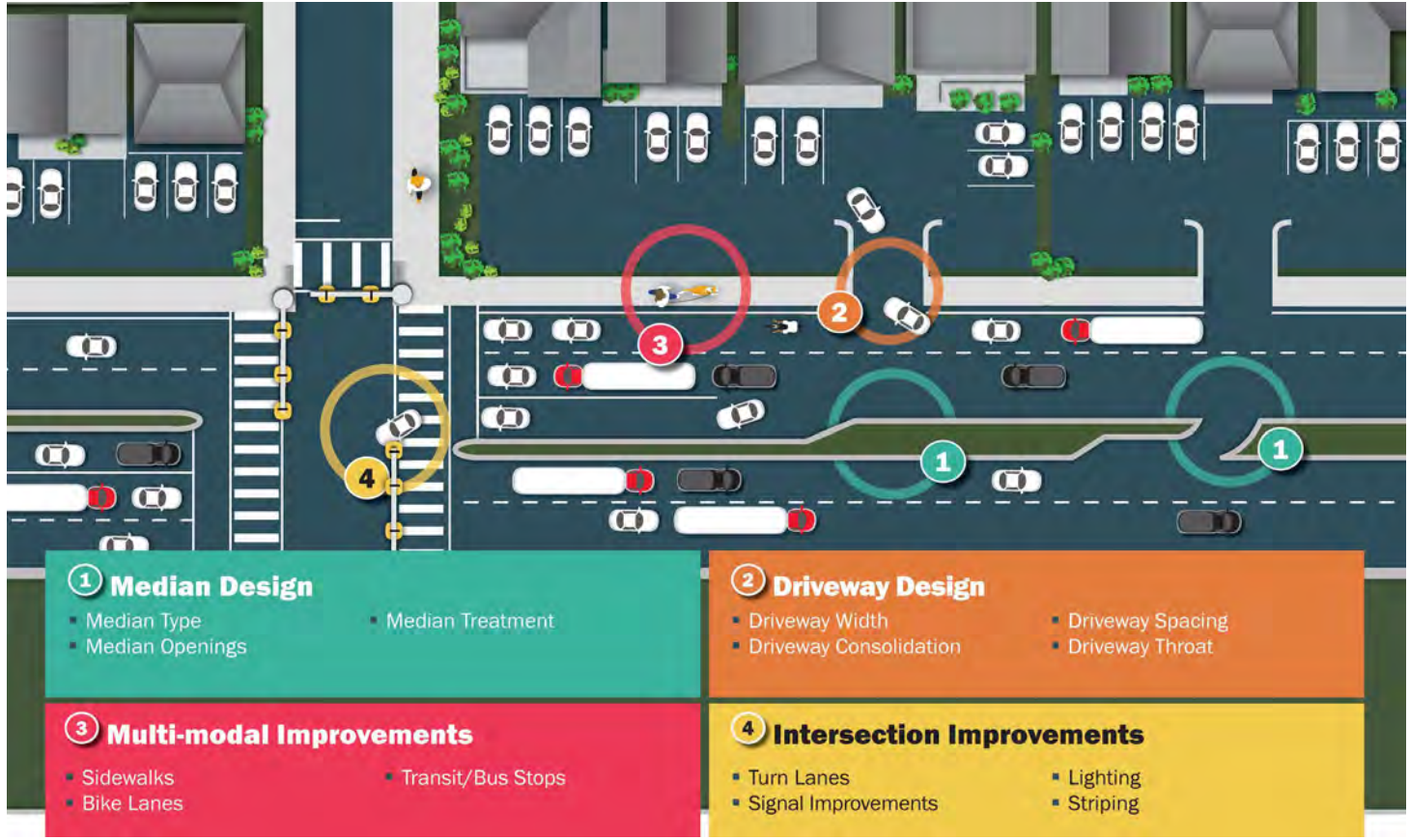
Access Management Overview

What is Access Management?

Access Management is a systematic strategy that seeks an appropriate balance between the safety and mobility of a roadway with the access needs of adjacent land uses.



Access Management Toolbox

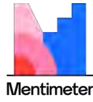


Graphic Source: Access Management Toolbox - TXDOT

5

Live Polling





Live Polling via Mentimeter www.menti.com from your phone or laptop

Enter Code: **2539 0615**



Start Polling

How often do you travel on SR 21/Augusta Rd per mode?

Mentimeter



14

List 3 CHALLENGES/ISSUES along SR 21/Augusta Rd.

Mentimeter



13

List 3 STRENGTHS/OPPORTUNITIES along SR 21/Augusta Rd.

Mentimeter



14

In terms of safety, rate the following based on needs along SR 21/Augusta Rd.

Mentimeter



14

In terms of mobility, rate the following based on needs along SR 21/Augusta Rd.

Mentimeter



13

In terms of streetscaping, rate the following based on needs along SR 21/Augusta Rd.

Mentimeter

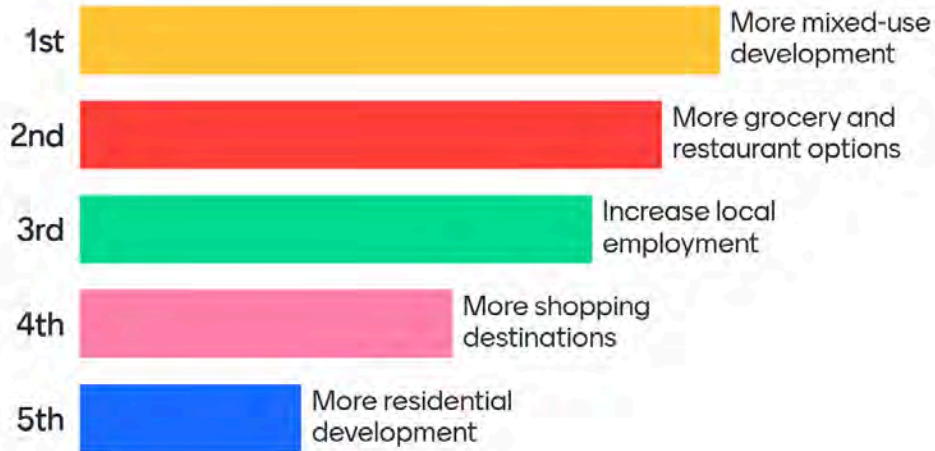


15



In terms of economic development, rank the following based on need along SR 21.

Mentimeter



14

"I envision the SR 21/Augusta Rd corridor being..."

An efficient thoroughfare for commuters and a vibrant commercial corridor for residents and workers.

I place I dont dislike driving to or through

attractive gateway to Garden City that is safe for everyone and a pleasant place to be.

a welcoming environment for people biking, walking, rolling, driving and using public transportation, to encourage economic development and local employment opportunities.

safe, walkable corridor with retail/grocery/shopping allowing for efficient commute

Safe for all users. Destination for locals.

A main street that also serves as a regional connector. All users are safe and comfortable on the road.

A safe, tree-lined, walkable, visually appealing corridor. A streetscaped gateway into the City.

A safe and enjoyable route for commuters and residents offering more opportunities to stop and visit instead of drive-through

Making it safe for K 12

I envision the SR 21/Augusta Rd corridor being more supported by public transit to bridge the gap between this area and the city of Savannah.

A increasingly important regional employment center with reliable transportation access that attracts and connects workers with good paying jobs

Open Discussion

Feedback & Questions



Next Steps

Road Safety Audit



JOIN US!

Wednesday, May 26th

9 AM – 3 PM

Social Distancing Guidelines followed

Audit details will be sent soon!



Road Safety Audits provides opportunity to identify safety issues in the field and integrate a multimodal approach.



Phase 1 Public Input



1st Public Meeting (Virtual)

Join Us on May 25th at 6 PM via Zoom

More details coming soon!



Phase 1 Survey

Survey Monkey: <https://www.surveymonkey.com/r/SR21Phase1>

WikiMapping Tool: <https://wikimapping.com/SR-21-Access-Management-Study.html>

SMS Text Option: Text [sr21phase1](tel:833-382-1387) to [833-382-1387](tel:833-382-1387) to take the survey



How Can You Help?

Share Our Survey Link and Public Meeting Flyer!



Thank You!

Questions?

Aimee Turner, PE, PTOE, IMSA TS III
Croy Project Manager
aturner@croyeng.com