

WELCOME



Thanks for Joining the SR 21 Access Management Study Public Meeting!

Please place your name in the chat so we can have record of your attendance.
(You may send directly to Denise Grabowski in the chat if preferred).



Provide your email (optional) to be added to the mailing list
or you can sign up online at
<https://www.surveymonkey.com/r/SR21Updates>

We will get started momentarily.




SR 21 Access Management Study

Public Meeting
May 25, 2021



Agenda

- ▶ Project Overview
- ▶ Existing Conditions
- ▶ Access Management Overview
- ▶ Live Polling  Mentimeter
- ▶ Open Discussion
- ▶ Next Steps

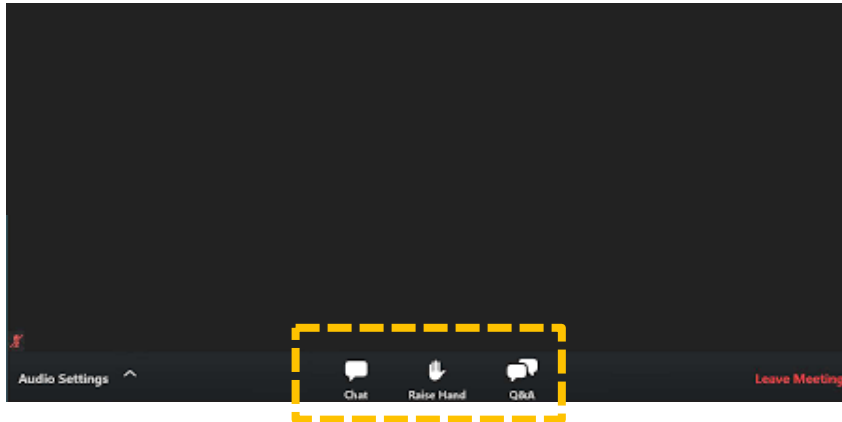
Virtual Meeting Housekeeping

During Presentation

All attendees will be on mute throughout the presentation.

Questions can be posted via the Zoom Q&A chat window during the presentation.

During Open Discussion, attendees will have the chance to speak if desired by clicking “raise hand”.



Live Polling via Mentimeter

www.menti.com from your phone or laptop

Code: **7805 2835**



Project Overview

The background features several abstract, 3D-style geometric shapes. On the left, a large, dark blue rectangular block is partially visible. On the right, there are three overlapping shapes: a yellow one at the top, a dark blue one in the middle, and a light cyan one at the bottom. The overall aesthetic is modern and professional.

Introduction to the Team



Project Background



SR 21/Augusta Road Characteristics:

- ▶ Provides Direct Access to I-95 and I-516
- ▶ Parallels the Savannah Port
- ▶ Significant Freight Traffic
- ▶ Historically Retail Corridor
- ▶ Several Commercial Driveways
- ▶ New K-12 Campus at Groves High School
- ▶ Designated Urban Redevelopment Area

Purpose & Goals



Why is this study needed?

- Several driveways & conflict points
- High crash rates
- Fatalities & pedestrian crash experience
- Lack of infrastructure for pedestrians
- Traffic congestion at intersections
- Construction of new K-12 Campus
- Spur redevelopment in area

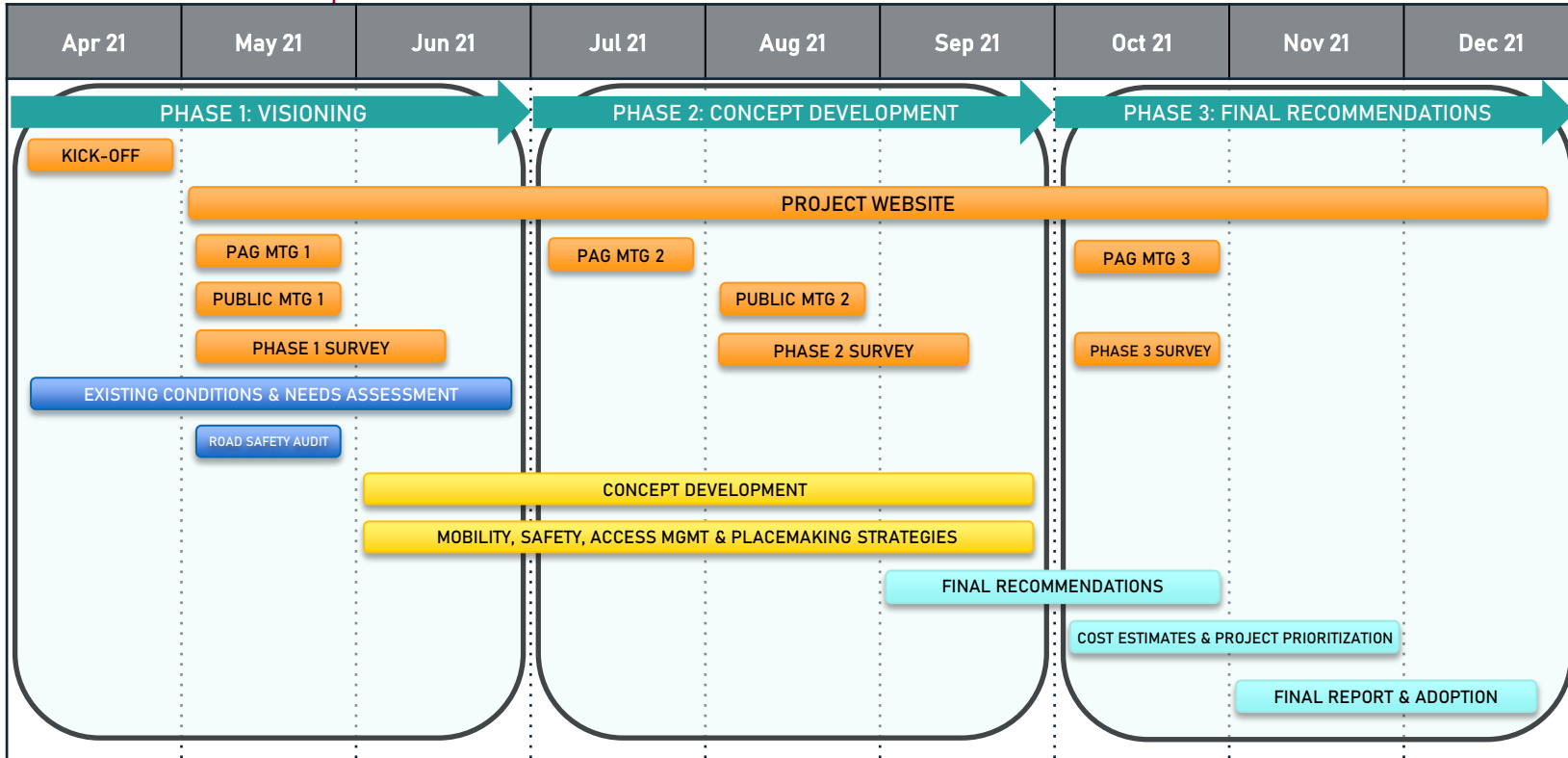


What are the goals of this study?

- Promote safety for all travel modes
- Reduce crash experience
- Improve traffic flow
- Improve multimodal infrastructure
- Support current and future demand
- Support economic growth
- Improve quality of life

Study Timeline

★ Public Meeting #1
May 25, 2021





Existing Conditions



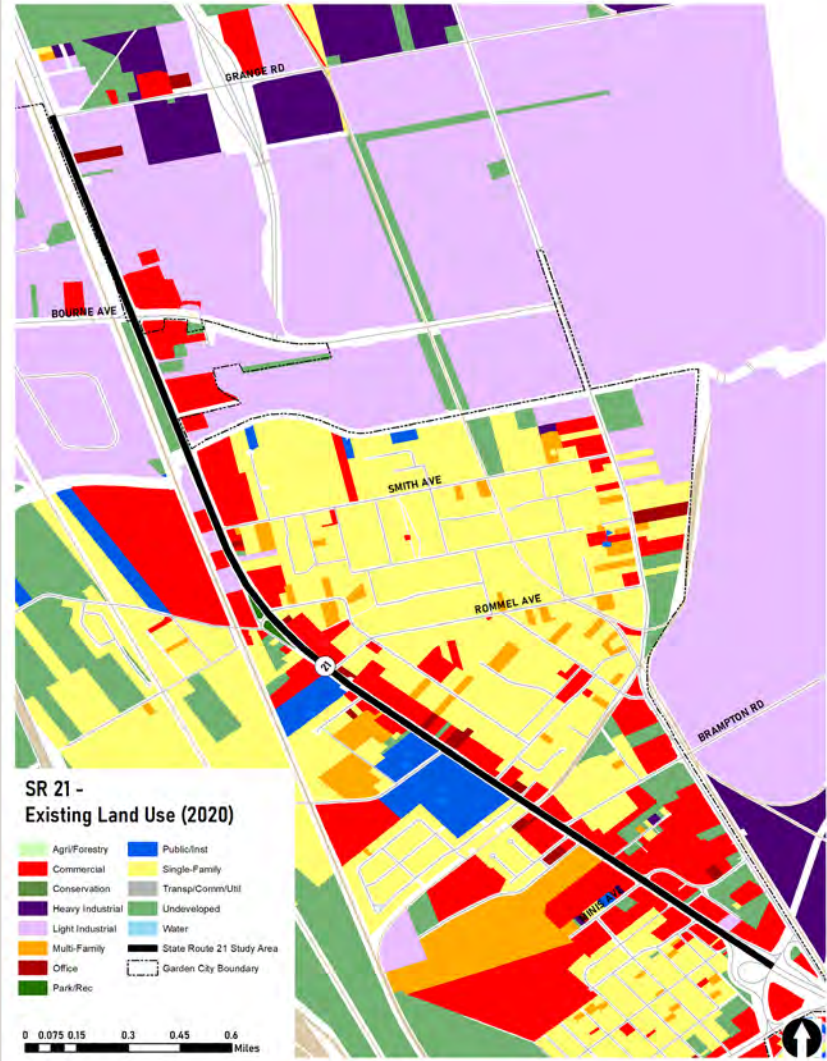
Roadway

- ▶ Classification: Principal Arterial
- ▶ 6 lanes with center TWLTL
- ▶ Provides access to I-516 and I-95
- ▶ 40,350 vehicles per day
- ▶ Approximately 9% heavy vehicles
- ▶ 140 ft – 150 ft Right-of-Way
- ▶ 45 mph speed limit



Existing Land Use

- ▶ Primarily commercial fronting corridor
- ▶ Mercer Middle School & Groves High School
- ▶ Bazemore Park
- ▶ Single Family Homes east & west of corridor
- ▶ Industrial towards northern end



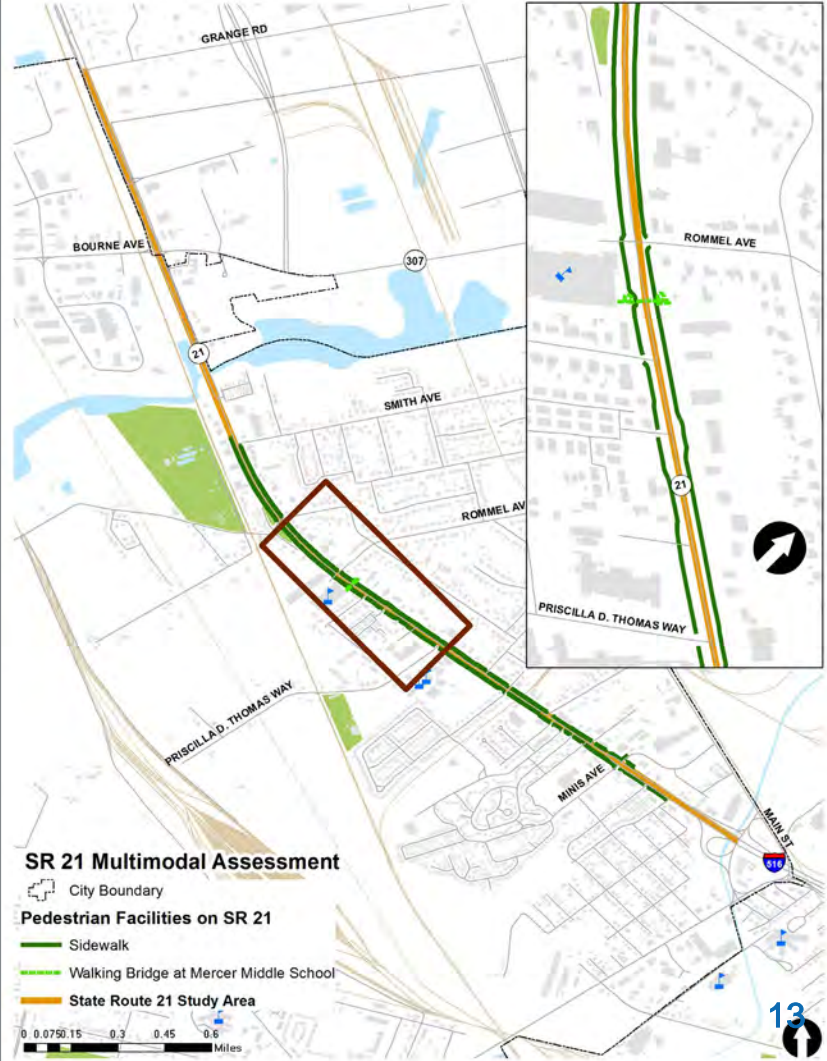
**SR 21 -
Existing Land Use (2020)**

| | |
|------------------|---------------------------|
| Agri/Forestry | Public/Inst |
| Commercial | Single-Family |
| Conservation | Transp/Comm/Util |
| Heavy Industrial | Undeveloped |
| Light Industrial | Water |
| Multi-Family | State Route 21 Study Area |
| Office | Garden City Boundary |
| Park/Rec | |

0 0.075 0.15 0.3 0.45 0.6 Miles

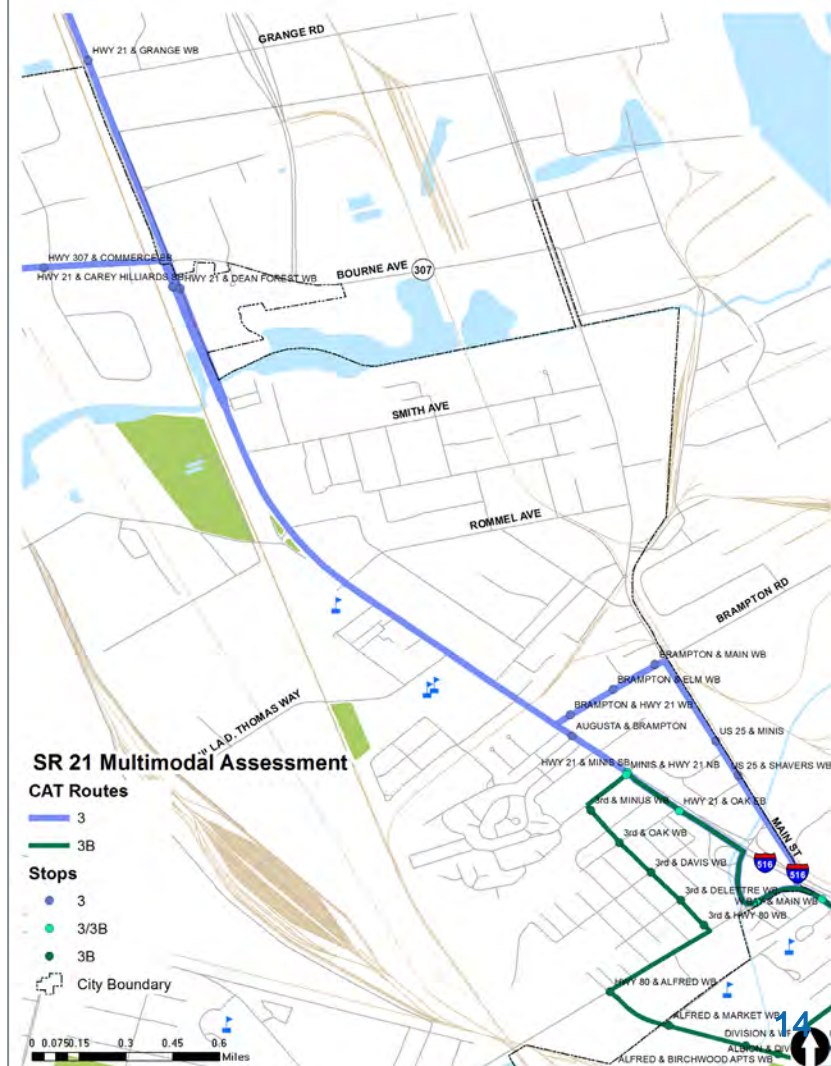
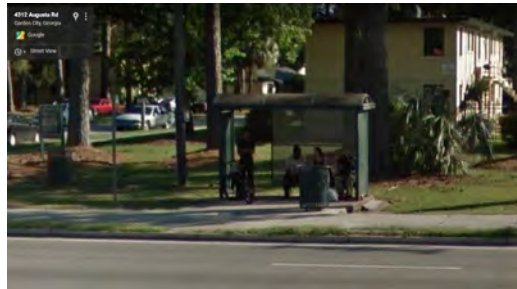
Bike/Pedestrian Facilities

- ▶ Sidewalks present south of Smith Avenue
- ▶ Pedestrian Bridge near Mercer Middle School
- ▶ No Sidewalks north of Smith Avenue
- ▶ No bicyclist facilities
- ▶ Segments designated a part of East Coast Greenway




Transit


- ▶ Fixed route bus service provide by CAT
- ▶ Route 3B stops primarily south of Brampton Road
- ▶ Route 3 stops at Dean Forest Road and Grange Road to major industrial/manufacturing/distribution employers
- ▶ No stops to school or commercial area N of Brampton
- ▶ CAT in discussion with Garden City to expand service



Safety

Between 2016 and 2020 there were:

 1,187 Crashes
~ 20/month

 343 Injury Crashes

 13 Pedestrian Crashes

 1 Bicyclist Crash

51% Rear End Crashes

27% Angle Crashes

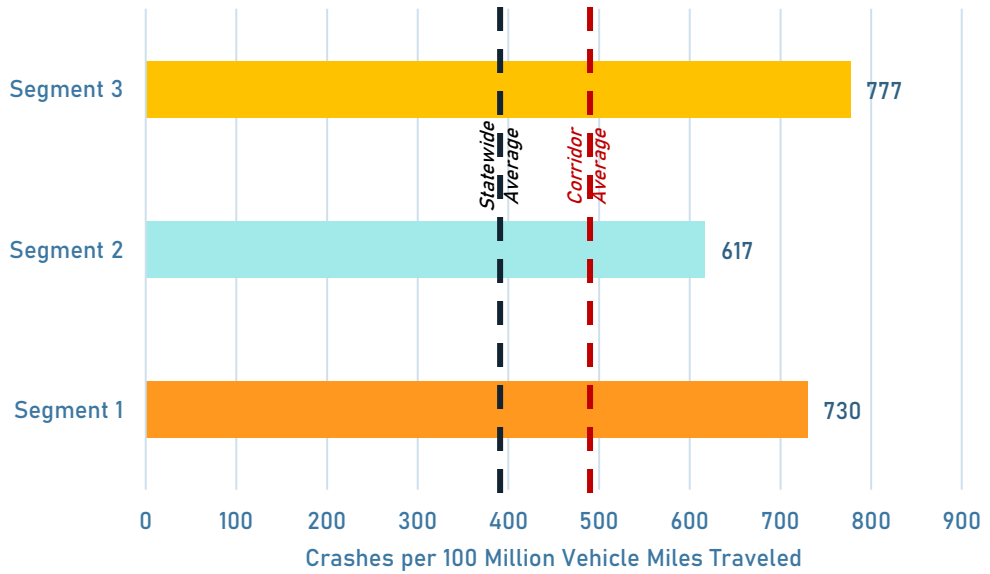
2 FATAL CRASHES
Both Involved Tractor Trailers

Both Rear End Crashes

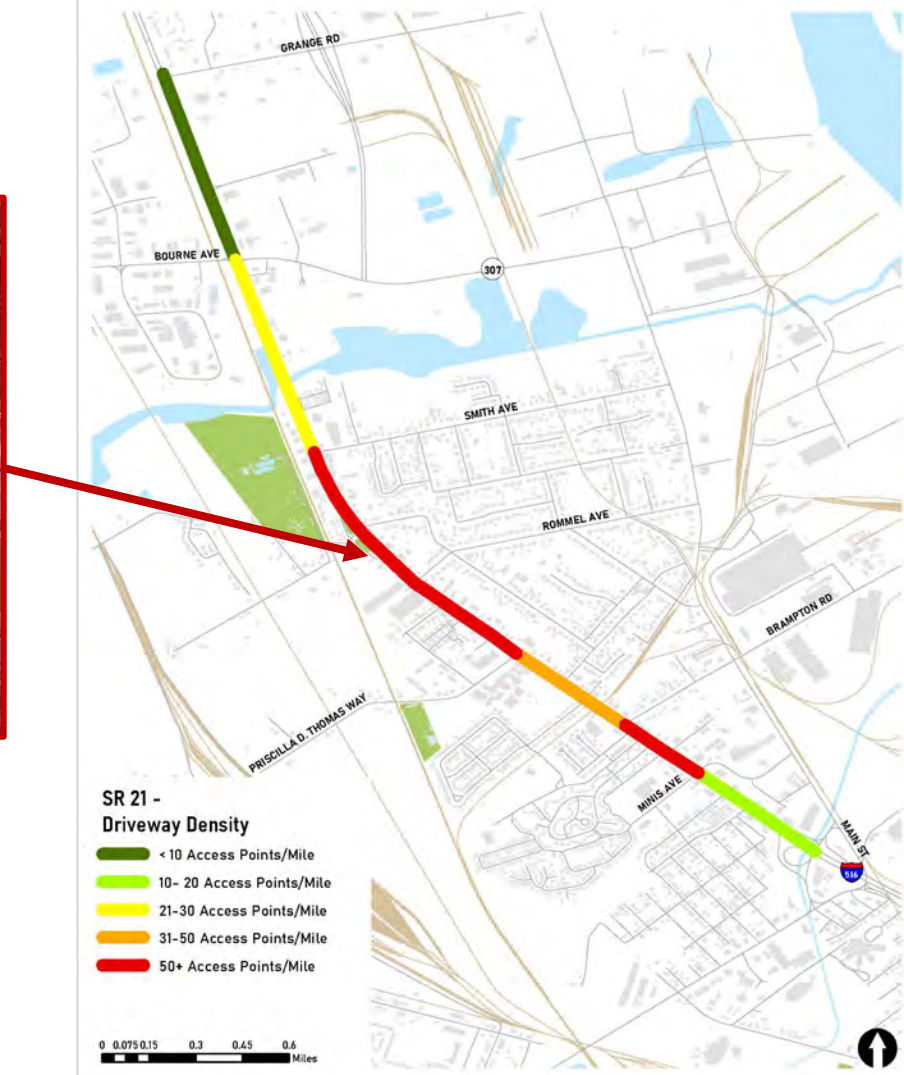
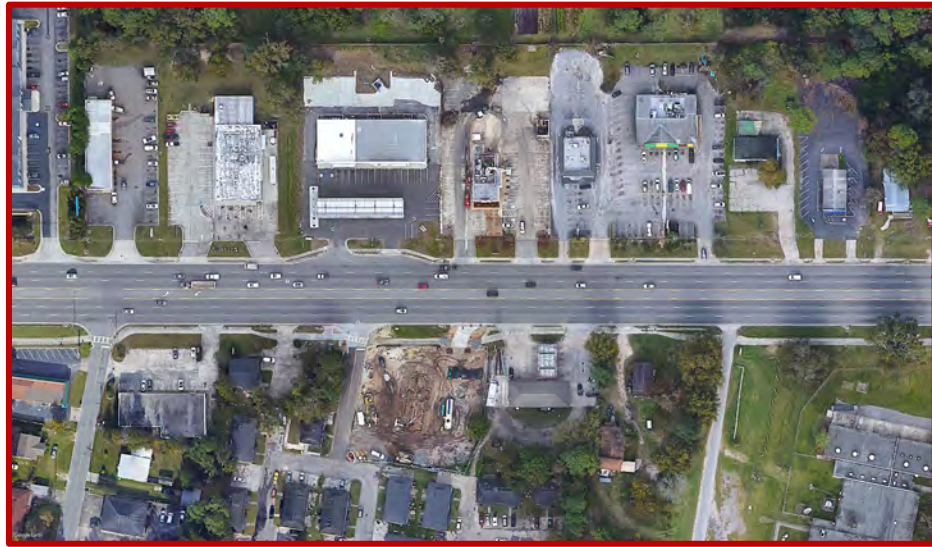


Safety

Crash Rates along SR 21/Augusta Road



Access Point Density



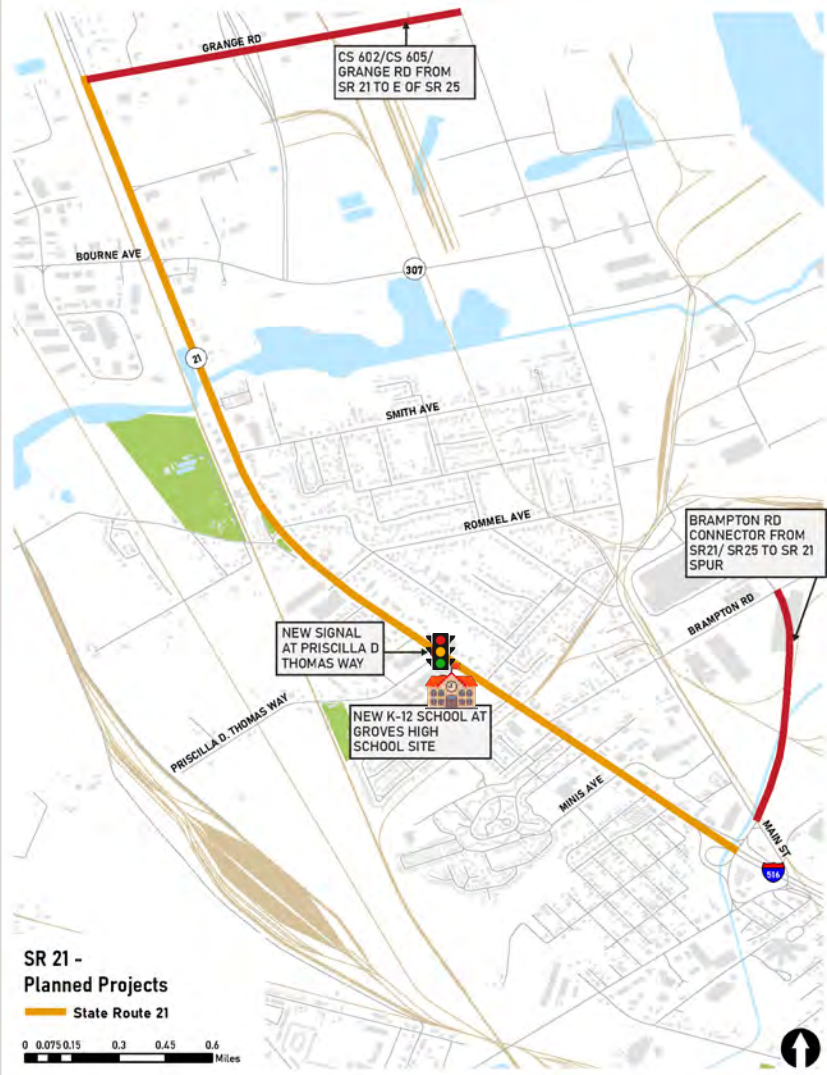
High access point density on arterial roads can cause traffic flow and safety issues.

Planned Projects

- ▶ New K-12 School at Groves High School Site
- ▶ New Signal at Priscilla D Thomas Way
- ▶ Port Expansion & Industrial Developments
- ▶ Coordination with SR 307 Corridor Study



New Groves K-12 Campus
Conceptual Layout



The background features a dark blue field with abstract geometric shapes. On the left, a large, semi-transparent blue number '4' is partially visible. On the right, there are several overlapping shapes: a yellow triangle pointing downwards, a blue trapezoidal shape, and a cyan trapezoidal shape pointing upwards.

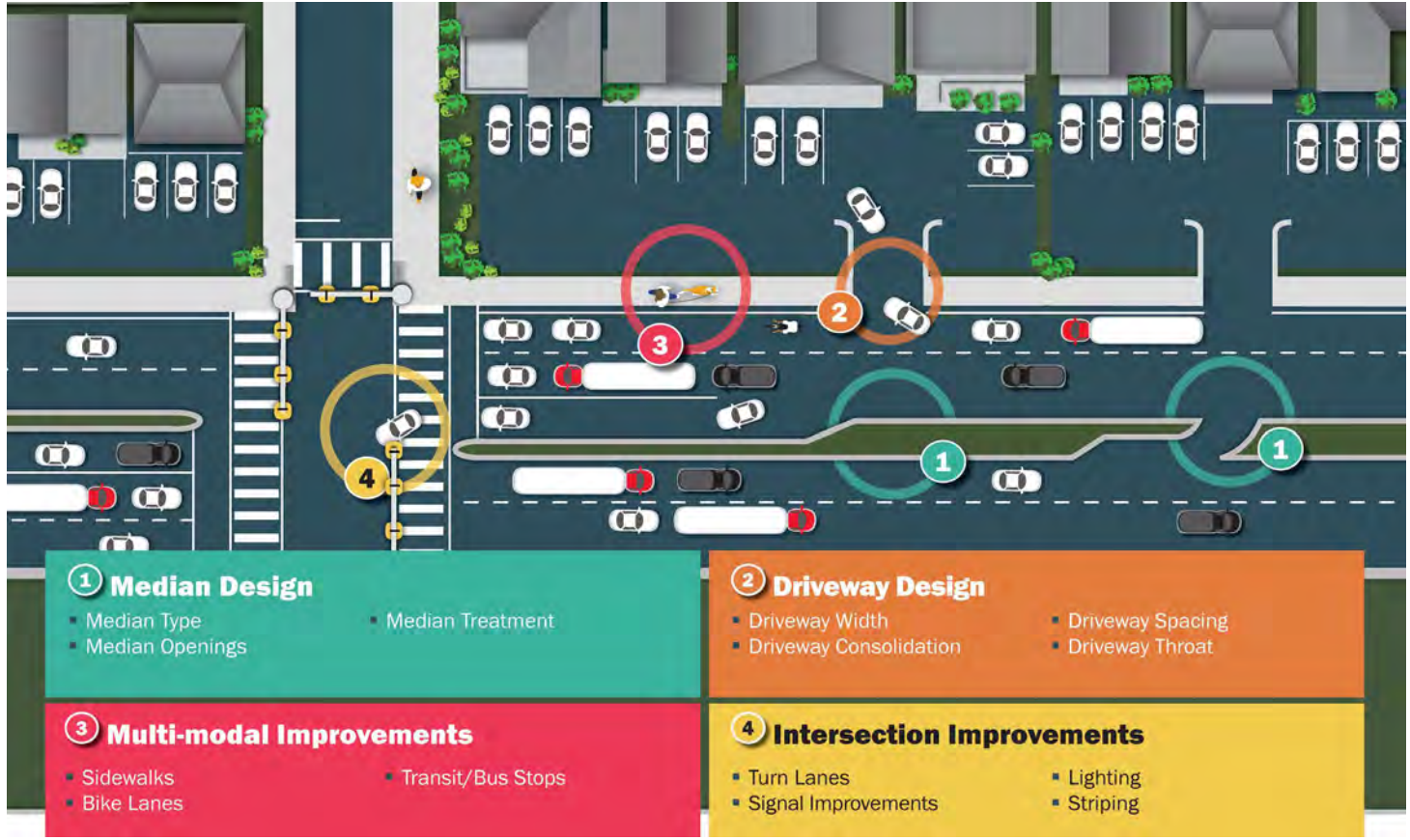
Access Management Overview

What is Access Management?

Access Management is a systematic strategy that seeks an appropriate balance between the safety and mobility of a roadway with the access needs of adjacent land uses.



Access Management Toolbox



Graphic Source: Access Management Toolbox - TXDOT

5

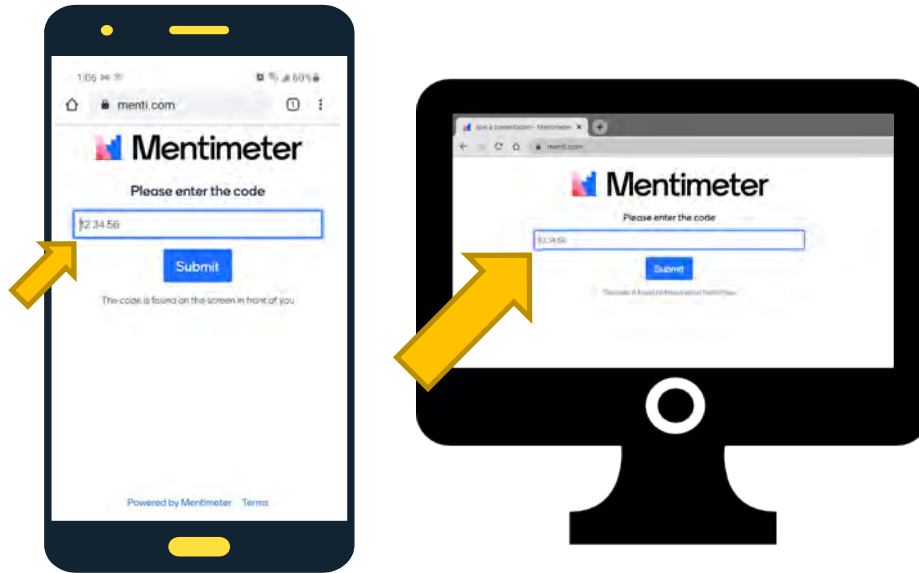
Live Polling





Live Polling via Mentimeter www.menti.com from your phone or laptop

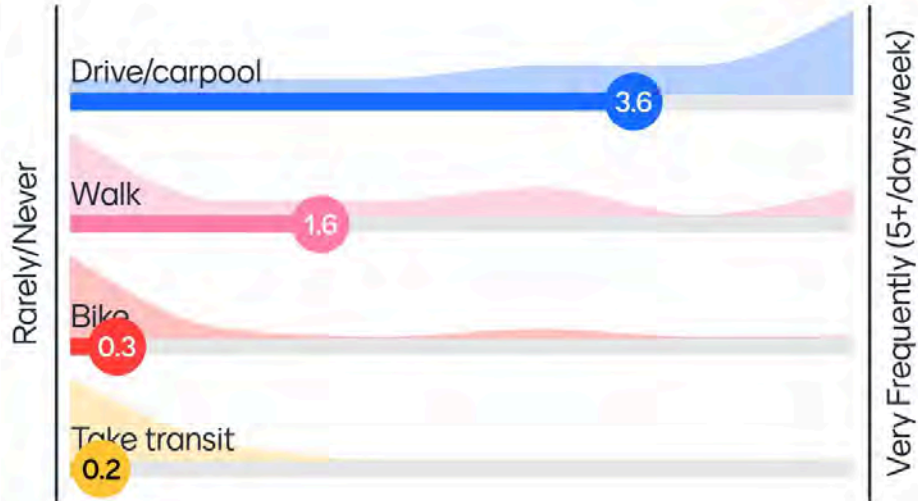
Enter Code: **7805 2835**



Start Polling

How often do you travel on SR 21/Augusta Rd per mode?

Mentimeter



List 3 CHALLENGES/ISSUES along SR 21/Augusta Rd.

Mentimeter



13

List 3 STRENGTHS/OPPORTUNITIES along SR 21/Augusta Rd.

Mentimeter



In terms of mobility, rate the following based on needs along SR 21/Augusta Rd.

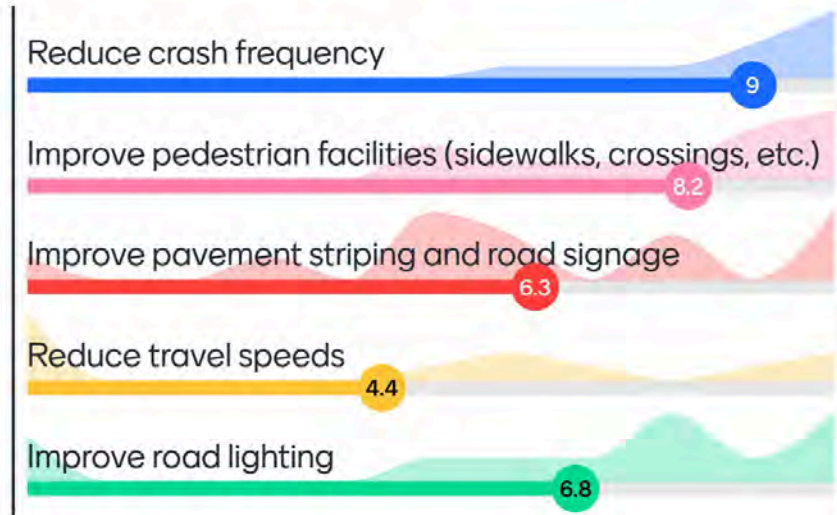
Mentimeter



13

In terms of safety, rate the following based on needs along SR 21/Augusta Rd.

Mentimeter



12

In terms of streetscaping, rate the following based on needs along SR 21/Augusta Rd.

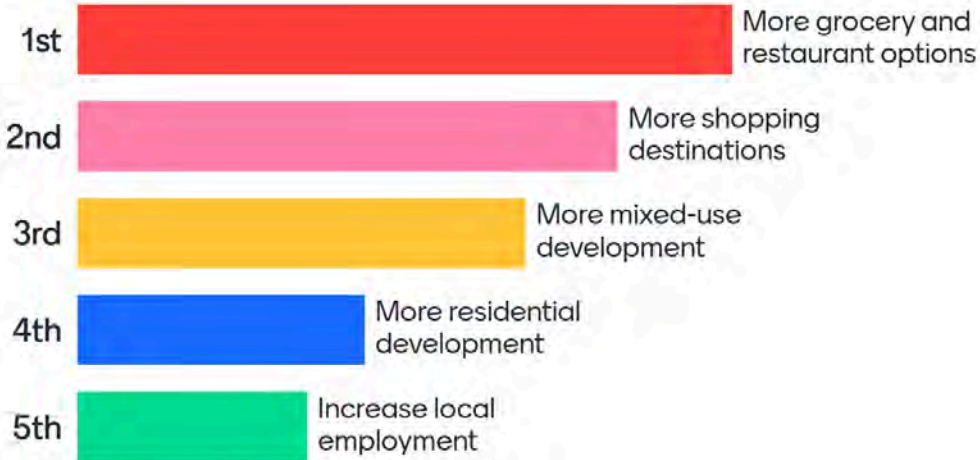
Mentimeter



12

In terms of economic development, rank the following based on need along SR 21.

Mentimeter



13



"I envision the SR 21/Augusta Rd corridor being..."

A beautiful entry and exit through the city.

Safe place for residents and attractive place for tourists.

Safe to travel

Safe, inclusive, vibrant thoroughfare providing connectivity and access to retail and shopping

Town to be proud of

A great looking clean area to travel

A place you like to go.

A future mixed use area that includes a variety of stores and restaurants for locals and commuters.

I strip. That location could be the new Rodayo Drive

A safe, accessible road system with tree included median and sidewalks that will promote the gateway to the City while allowing walkability for the residents.

A safe and beautiful place to drive thru. A place local residents can find great employment.

A walkable corridor that's pedestrian friendly and attract tourist

Sorry A Strip

A 24/7 corridor. One that services the needs of the night population equally if not greater than the day population. Retail, shopping etc. is consequent of residential development and growth. One that commends commercial prosperity and communal peace

Open Discussion

Feedback & Questions



Next Steps

Phase 1 Public Input



TAKE OUR PHASE 1 SURVEY

Survey Monkey: <https://www.surveymonkey.com/r/SR21Phase1>

WikiMapping Tool: <https://wikimapping.com/SR-21-Access-Management-Study.html>

SMS Text Option: Text [sr21phase1](tel:833-382-1387) to [833-382-1387](tel:833-382-1387) to take the survey



CHECK OUT OUR PROJECT WEBPAGE

<https://www.thempc.org/Core/SR21Access>



HOW CAN YOU HELP?

Share Our Survey Link with family and friends!



Thank You!

Questions?

Aimee Turner, PE, PTOE, IMSA TS III
Croy Project Manager
aturner@croyeng.com