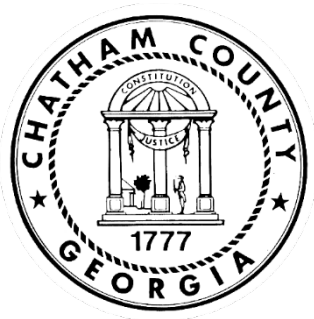


TOWN Talks²

Neighborhood Meetings



As Part of The Plan 2020 Comp Plan Update to
Engage Neighborhoods



SAVANNAH
savannahga.gov



CONTENTS

1. Chatham's Growth
2. Trends
3. Chatham County
Comprehensive Plan
4. Timeline & Next Steps
5. Feedback Thus Far
6. Feedback on Draft Goals



PLANNING TEAM



Melanie Wilson



Jackie Jackson



Nic Fazio



Asia Hernton



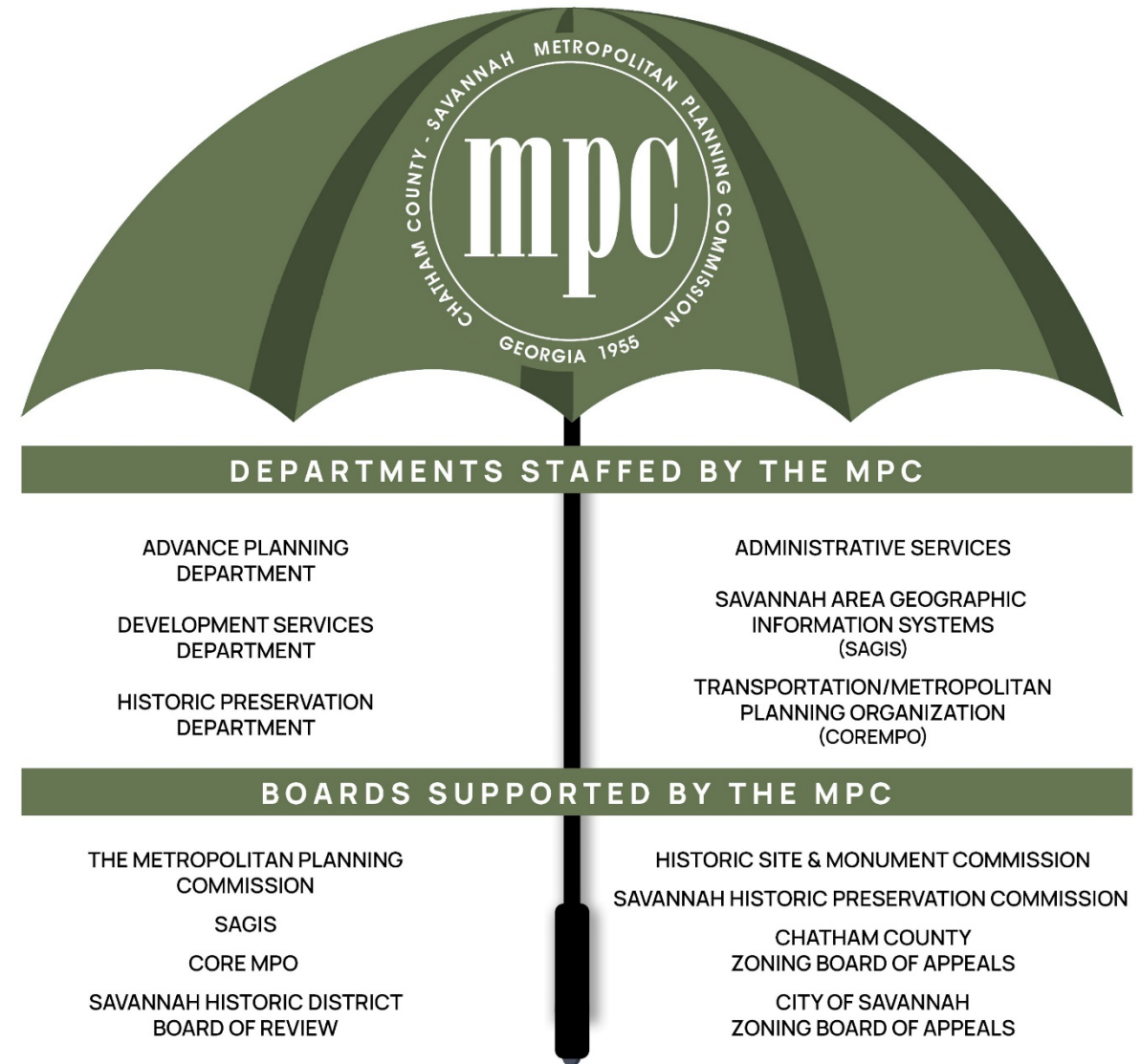
Kait Morano



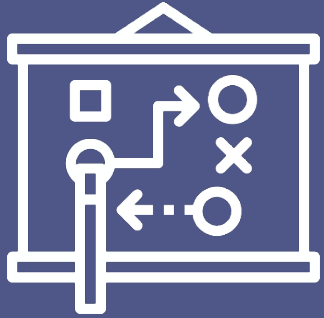
WHO WE ARE

Our Vision – The MPC will be the leader in planning, development, and preserving a greater community through partnerships and an open process.

Our Mission – It shall be in the mission of the MPC to provide an accessible planning process, sound professional planning products, and recommendations to ensure a greater quality of life for all to enjoy a community that is historic, sustainable, mobile, and prosperous.”



OUR SERVICES



**ADVANCE
PLANNING**



**DEVELOPMENT
SERVICES**



**HISTORIC
PRESERVATION**



SAGIS

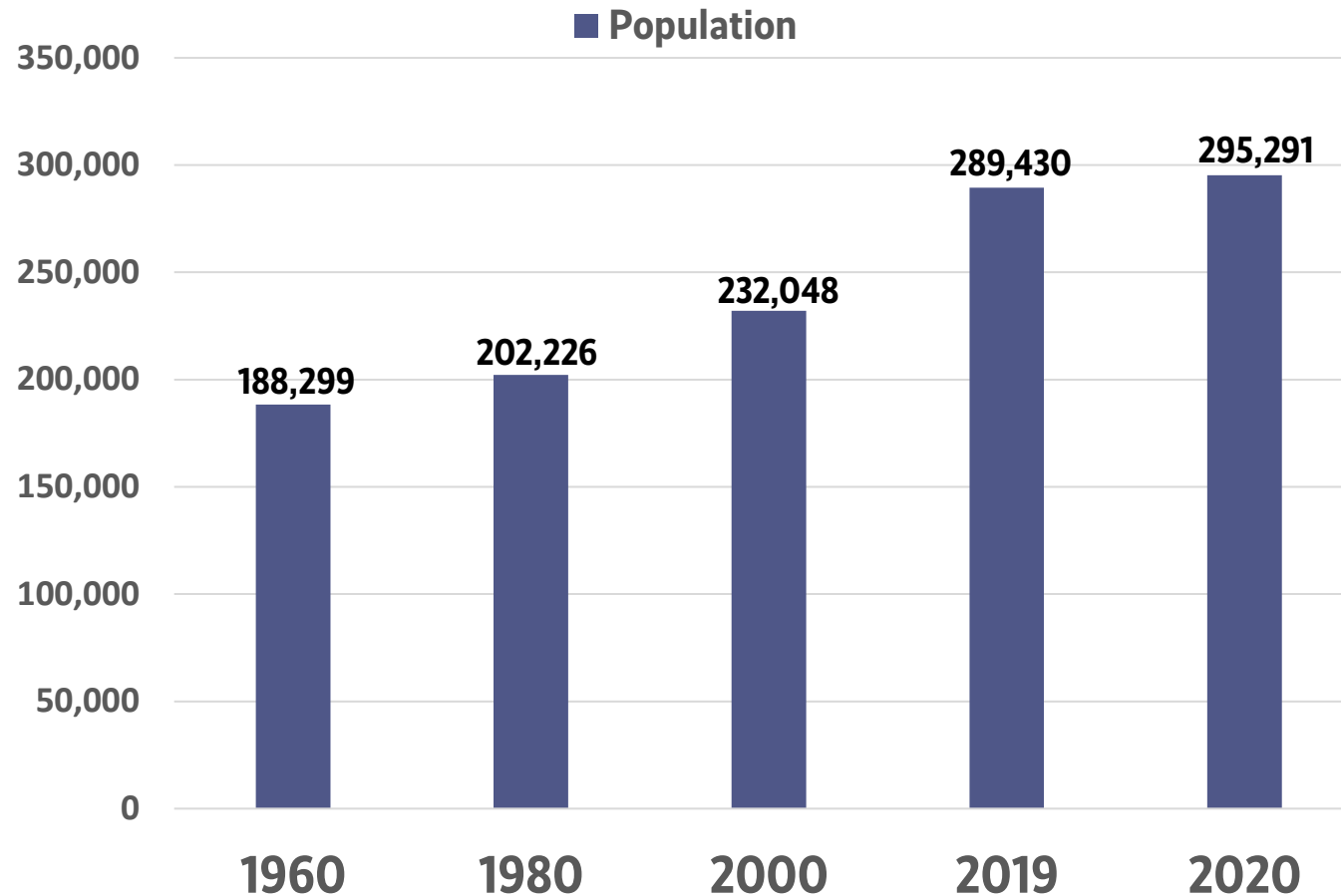


**TRANSPORTATION
CORE MPO**



CHATHAM'S GROWTH

Population Increase Since 1960



Source: Decennial Census; Census Population Estimates Program



THE COMPREHENSIVE PLAN

Plan 2040 is the tool to bring all of these elements together and provide direction for the next 20 years:

- Drainage
- Open Space & Natural Resources
- Housing
- Land Use
- Transportation & More



PLAN ELEMENTS

1. Executive Summary
2. Community Profile
- 3. Community Vision and Goals**
- 4. Economic Development**
- 5. Land Use**
- 6. Transportation**
- 7. Housing**
8. Natural Resources
9. Quality of Life
 - a. Community Health
 - b. Education
 - c. Public Safety
 - d. Broadband**
 - e. Historic & Cultural Resources
- 10. Community Strategic Plan & Work Program (STWP)**
- 11. Community Participation Program**
12. All with themes of Resiliency, Climate Change, & COVID-19 impacts discussed throughout
- 13. Service Delivery Strategy (Current)**

■ = Required by the Georgia DCA



PLAN IMPLEMENTATION

Goals and strategies are the framework for the policy directions established in the Plan.

- “**Goals**” are general overarching, broad statements describing the direction that a community wants to go.
- “**Strategies**” are statements with actions that should be taken, identifying how much, who and when the action should occur.



Together, the overarching **goals** are achieved by implementing the **strategies** within the Comprehensive Plan

MEETINGS & POP-UP EVENTS

Community input opportunities allowing input and feedback on goals and strategies will continue through the spring.

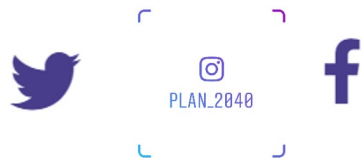
- **October 21** – Starland Yard Mini Market
- **October 24** – County Recycling Event
- **November 21** – Forsyth Farmers' Market
- **November 24** – Garden City Senior Center
- **December 9** – Garden City Gym
- **December 12** – Forsyth Farmers' Market
- **December 15** – Garden City City Hall Meeting
- **January 12** – Garden City City Hall Meeting
- **January 22** – Pooler City Hall Meeting
- **January 27** – 10:30 A.M. Countywide Virtual Meeting
- **January 27** – 3:00 P.M. Countywide Virtual Meeting
- **February 22** – 5:30 P.M. Countywide Virtual Meeting
- **February 23** – 10:30 A.M. Countywide Virtual Meeting
- **February 26** – Pooler City Hall Meeting
- **March 30** – 10:30 AM & 3:30 P.M. Countywide Virtual Meeting
- **April 2021** - TOWNTalks
- **May** – **TOWNtalks:** Various Neighborhood Assns. and Churches Countywide
- **Countywide Virtual Meeting**



PUBLIC ENGAGEMENT

Make sure your opinion is heard,
Follow us @PLAN_2040 for updates...

plan2040@thempc.org



Instagram

Search

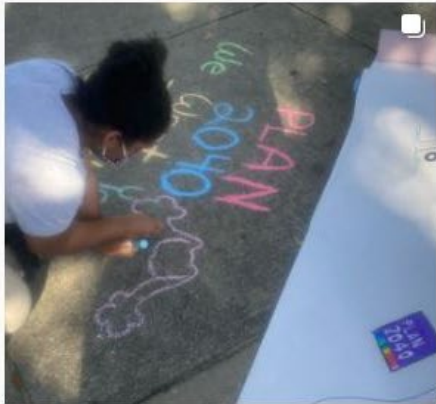


plan_2040 [Follow](#)

56 posts 190 followers 196 following

The MPC
A Community Planning Effort to Provide Transparency & Collaboration. 🏠🏢🏡
[@cityofsavannah](#), [@chathamcountyga](#), [@visitgardencityga](#), [@poolerchamber](#)
mpc.complan2040.org

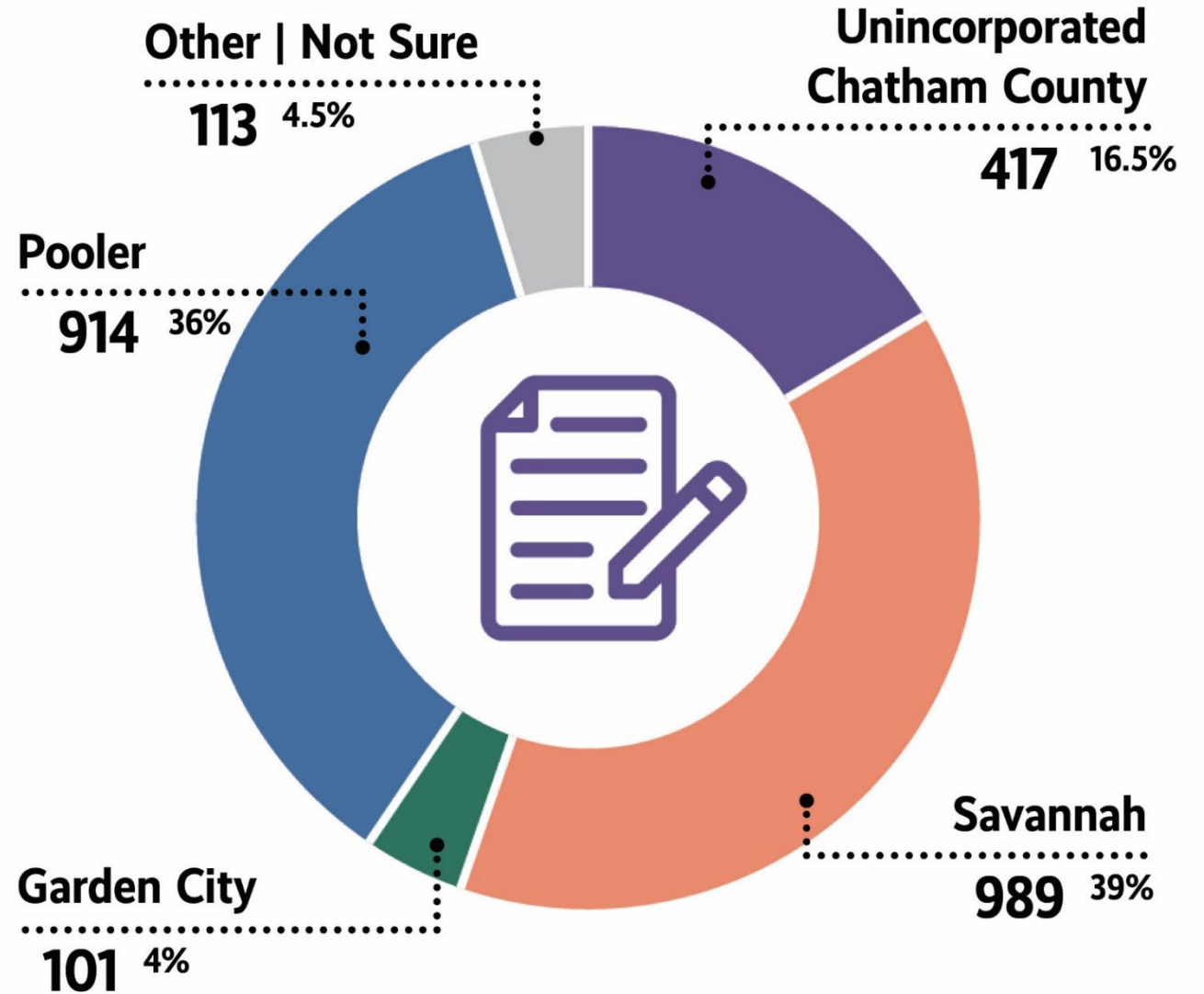
POSTS IGTV SAVED TAGGED



PUBLIC SURVEY

- Survey was live for 80+ days
- Survey topics included:
 - Land Use
 - Transportation/Infrastructure
 - Housing
 - Climate Change & Sea Level Rise
 - Education
 - Public Safety
 - Historic/Cultural Resources

Total Survey Responses: 2,534



CHAPTER DEVELOPMENT

- As each Element was completed, the document was uploaded to the website for public review.

- The combined Elements of the Draft Plan can also be found on the website

<https://www.thempc.org/docs/lit/compplan/2021/Plan2040Draft.pdf>

The screenshot displays the 'CHATHAM-SAVANNAH PLAN 2040 ELEMENTS' website. At the top is a dark blue navigation bar containing the 'PLAN 2040' logo, a menu with 'Home', 'About', 'Municipalities', 'Get Involved', and 'Contact Us', social media icons for Instagram, Facebook, and Twitter, and the 'mpc' logo. Below the navigation bar, the title 'CHATHAM-SAVANNAH PLAN 2040 ELEMENTS' is centered. The main content area features eight colored tiles arranged in a 2x4 grid, each representing a plan element. Each tile includes an icon, the element name, a link to the 'Chapter Draft', and a 'Provide Comments' link. The elements are: Community Profile (orange), Community Goals (orange), Economic Development (green), Land Use (orange), Transportation (blue), Housing (yellow), Natural Resources (green), and Quality of Life (purple). The 'Quality of Life' tile lists multiple draft sections: 'Historic Resources Section Draft', 'Broadband Section Draft', 'Education, Community Health, and Public Safety Sections Draft'. At the bottom center, there is a white button with the text 'VIEW FULL PLAN 2040 DRAFT'.

PLAN 2040 Home About Municipalities Get Involved Contact Us

CHATHAM-SAVANNAH PLAN 2040 ELEMENTS

COMMUNITY PROFILE
[Chapter Draft](#)
[Provide Comments](#)

COMMUNITY GOALS
[Chapter Draft](#)
[Provide Comments](#)

ECONOMIC DEVELOPMENT
[Chapter Draft](#)
[Provide Comments](#)

LAND USE
[Chapter Draft](#)
[Provide Comments](#)

TRANSPORTATION
[Chapter Draft](#)
[Provide Comments](#)

HOUSING
[Chapter Draft](#)
[Provide Comments](#)

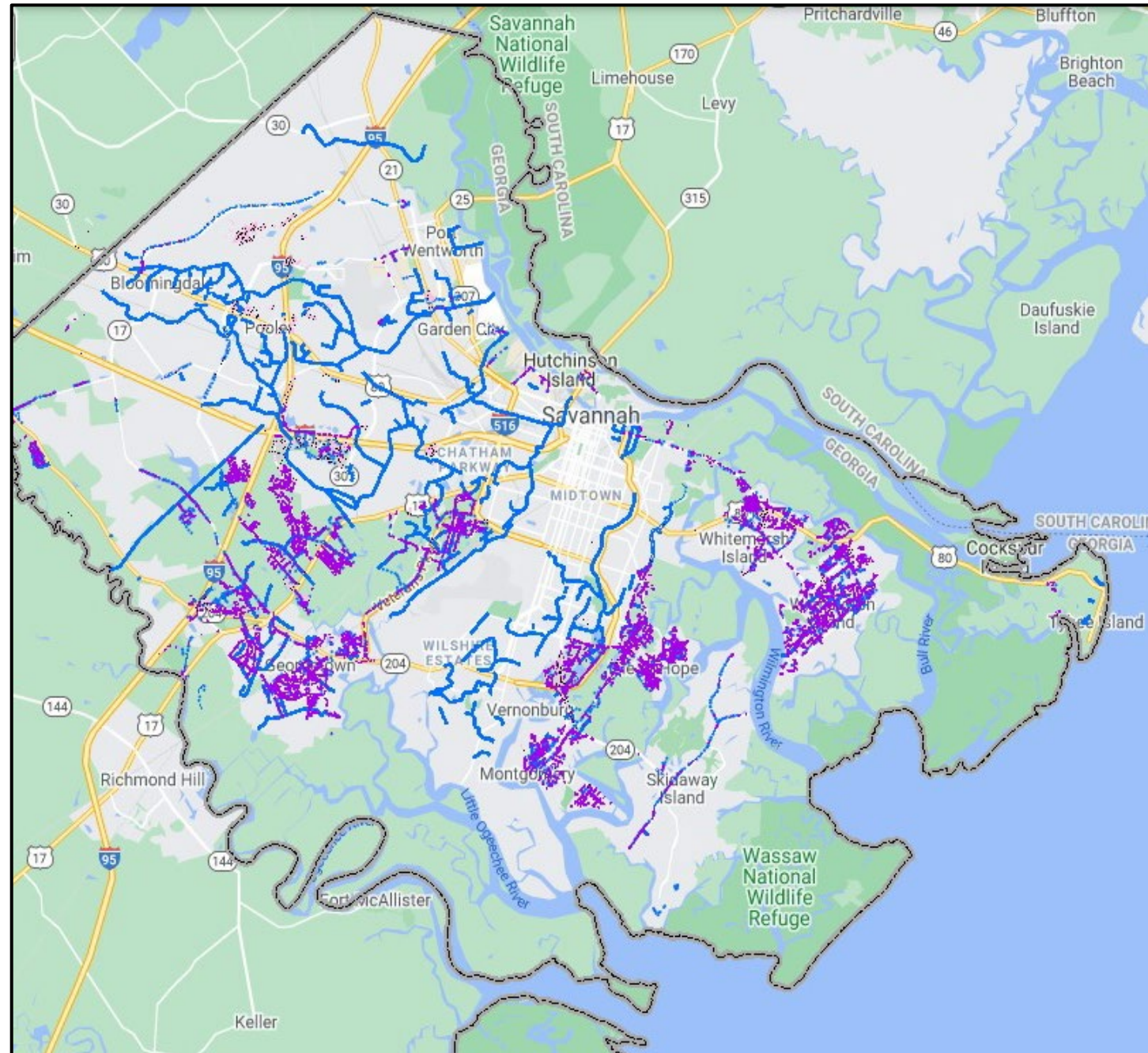
NATURAL RESOURCES
[Chapter Draft](#)
[Provide Comments](#)

QUALITY OF LIFE
[Historic Resources Section Draft](#)
[Broadband Section Draft](#)
[Education, Community Health, and Public Safety Sections Draft](#)
[Provide Comments](#)

VIEW FULL PLAN 2040 DRAFT

KEY ELEMENTS

Drainage: Chatham County Canals,
Ditches, and Outfalls



KEY ELEMENTS

Open Space: Chatham County Parks,
Recreation and Conservation Areas



KEY ELEMENTS

Housing: A Countywide evaluation and plan for housing is needed.

Working to provide an adequate supply of affordable housing stock can result in more opportunities for people at all income levels with more money available for spending in the community.





CHATHAM COUNTY-SAVANNAH METROPOLITAN PLANNING COMMISSION



912-651-1480



plan2040@thempc.org



@PLAN_2040



mpc.compplan2040.org



Comment map:

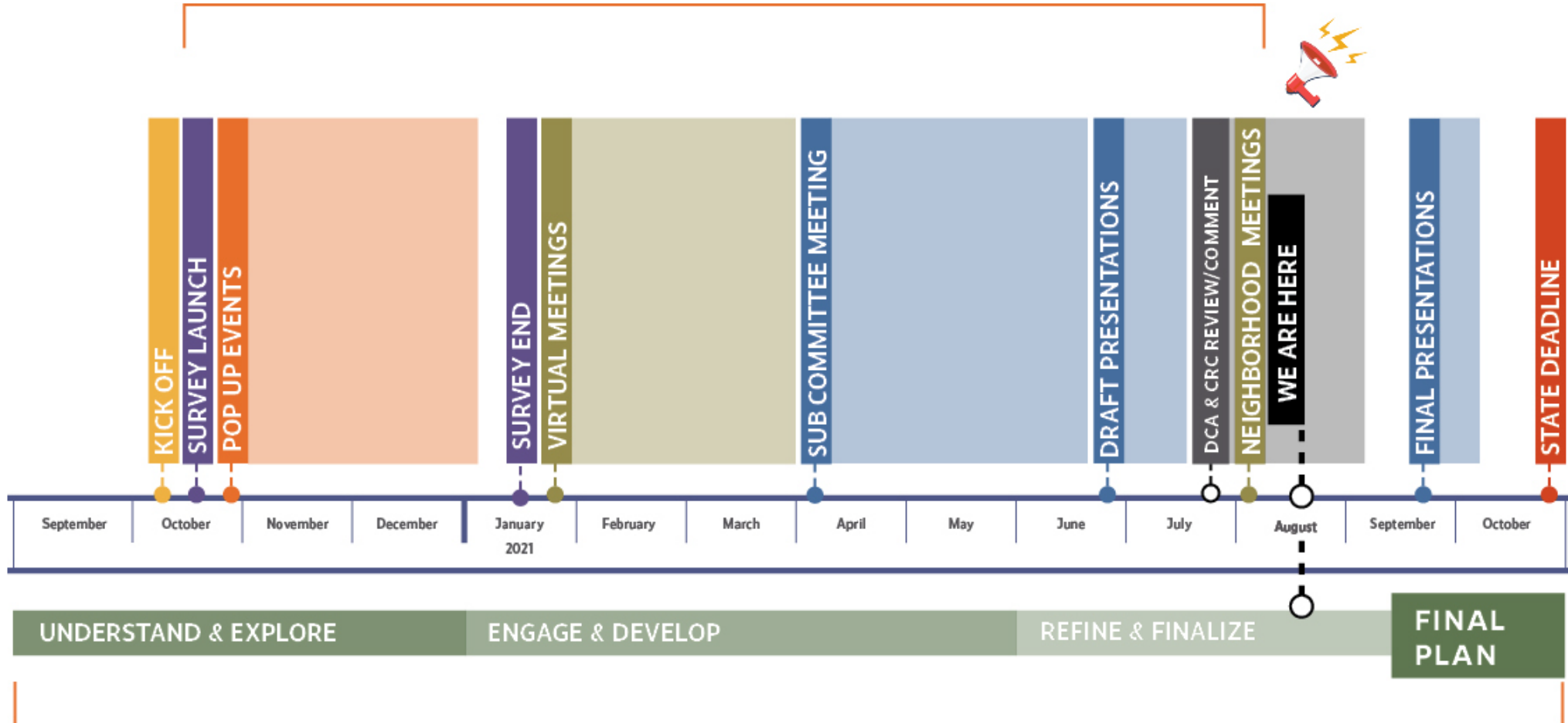
<https://mpc.compplan2040.org/Home/Index>

912-651-1440

110 E STATE STREET
SAVANNAH, GA. 31401

PROJECT TIMELINE

PUBLIC ENGAGEMENT PHASE

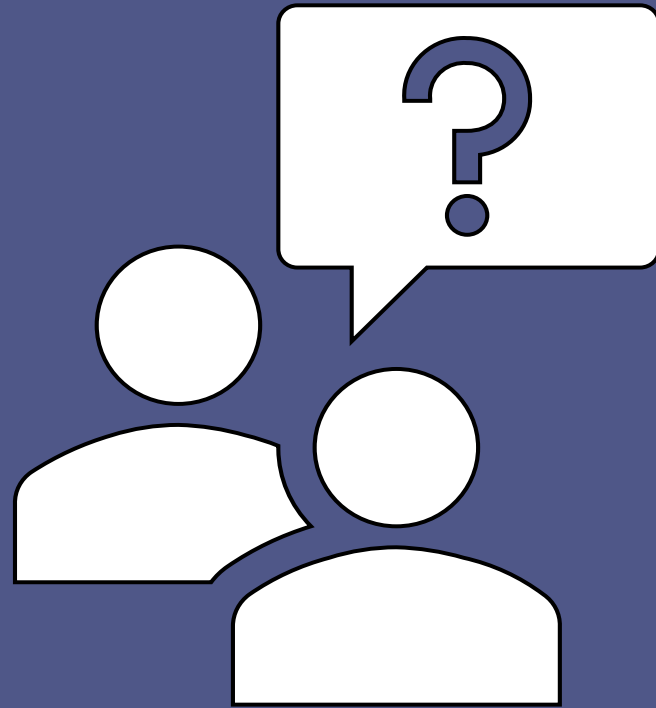


IMPORTANT DATES

- **August 2021**, General Public, County Commission and City Council providing input on DRAFT material and Goals
- **September**: Amended Plan will be routed to City Council for approval
- **September**: Amended Plan will be routed to County Commission for approval
- **October 31, 2021**: FINAL Approved Plan must be adopted by City and County and then routed back to the State for final approval



QUESTIONS BEFORE OUR GROUP EXERCISE?



GOALS EXERCISE



ECONOMIC DEVELOPMENT

In 2040...

Unincorporated Chatham County & Savannah anchors a thriving, business-friendly, regional economy in which all workers are prepared for quality jobs, and residents feel empowered to attain a high quality of life



LAND USE

In 2040...

Unincorporated Chatham County & Savannah are healthy and safe places to live, work, play and raise a family, and its social and economic values integrate the area's history, natural resources, efficient government, and public mobility system



NATURAL RESOURCES

In 2040...

Unincorporated Chatham County & Savannah is enhanced by the protection and maintenance of natural resources and ecosystems



HISTORIC RESOURCES

In 2040...

Unincorporated Chatham County & Savannah as historical and emerging cultural resources provide unique advantages to balance preservation with development and economic growth



EDUCATION

In 2040...

Unincorporated Chatham County & Savannah has innovative and inclusive educational systems, and are a model of academic excellence that enable students to have the knowledge, skills and ability to succeed at chosen pathways



TRANSPORTATION

In 2040...

Unincorporated Chatham County & Savannah prioritizes safe mobility for all users; offers efficient mobility options to support economic vitality; provides infrastructure that is sensitive to unique local characteristics; connects neighborhoods to education, employment, and services; and sustains environmental quality with clean mobility modes



HOUSING

In 2040...

Unincorporated Chatham County & Savannah achieves affordable, diverse and safe housing for its residents through efficient and effective policies and programs



COMMUNITY HEALTH

In 2040...

Unincorporated Chatham County & Savannah has a culture of health including equal access to quality and affordable healthcare, chronic disease prevention, health inclusive policies, and healthy environmental design



PUBLIC SAFETY

In 2040...

Unincorporated Chatham County & Savannah provide a community that is a safe place to live, work, and raise a family, and within which protection of residents is considered an integral part of its social and economic values



BROADBAND & FIBER OPTICS

In 2040...

Unincorporated Chatham County & Savannah has closed the digital divide to ensure access to fast affordable, and reliable broadband while acquiring world class broadband network capabilities to accelerate high-tech business development

CHATHAM COUNTY-SAVANNAH METROPOLITAN PLANNING COMMISSION



912-651-1440
110 E STATE STREET
SAVANNAH, GEORGIA 31401
[HTTPS://WWW.THEMPC.ORG](https://www.thempc.org)