



CORE MPO Freight Transportation Plan

Project Advisory Committee

May 07, 2014

Agenda



9:30 - 9:45

Welcome-Introductions

9:45 - 10:15

Why are you here?

- What is the Freight Transportation Plan
- Why are YOU Important to the Plan
- What does the Future Hold for You

10:15 – 10:50

What have we been doing?

- Tasks 2.1, 2.2, 2.4 COMPLETED
- Tasks 2.3, 2.5 ON-GOING

10:50 – 11:00

BREAK

11:00 – 11:50

Workshop

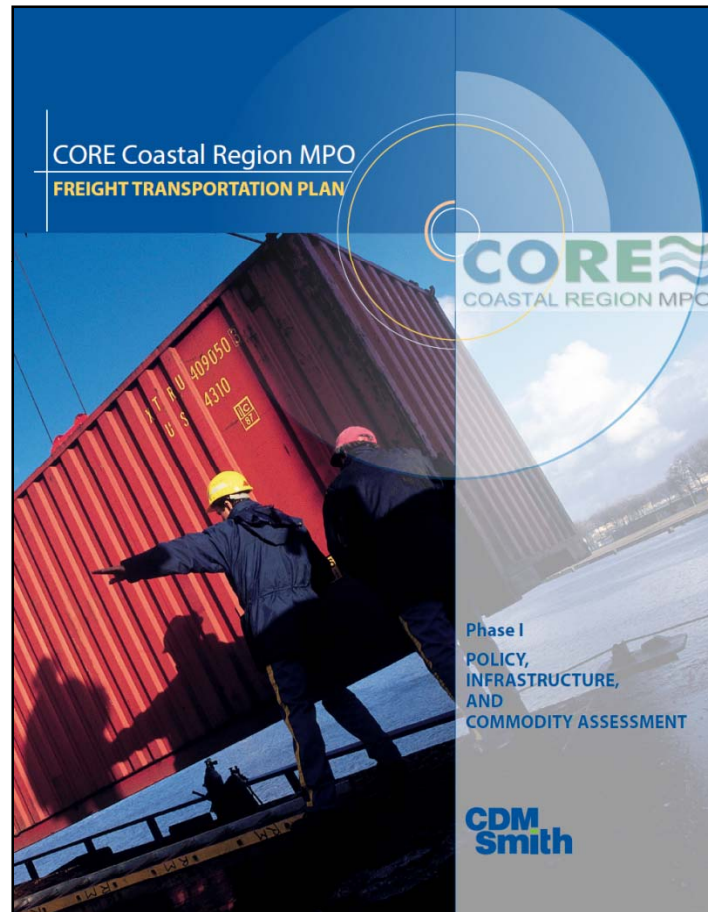
- Task 2.5
 - “Hot Spots”
 - Bottlenecks

11:50 – 12:00

What’s Next?

- Next Tasks
- Our next workshop

What Plan?



- Phase I, 3 Sections
 - Policy
 - How is freight being addressed?
 - Infrastructure
 - Inventory of Freight Generation and Transport
 - Commodity Flow
 - Overview of what freight is moving
- Drafted Feb-Mar 2013
- Final Version August 2013

Phase II



Task 1

- 1.1 Project Management
- 1.2 Advisory Committee Establishment

Task 2

- 2.1 Existing and Future Freight and Goods Movement Assessment
- 2.2 Develop Performance Measures
- 2.3 Forecasting Future Freight Growth
- 2.4 Regional Freight Profiles Development and Assessment
- 2.5 Freight Network Bottleneck, Safety, and Security Issues Identification
- 2.6 Freight Needs Assessment

Task 3

- 3.1 Assessment and Analysis of Land Use Policies and Local Decision Making with Regional Freight and Goods Movement Context
- 3.2 Assessment of Freight and Goods Movement Impact on Land Use in Region

Task 4

- Economic Development Market Assessment

Task 5

- Environmental and Community Impact Scan and Analysis

Task 6

- Recommendations For Future Land Uses Related to Freight and Goods Movement Needs and Forecasts

Task 7

- Final Recommendations – Identification of Improvements, Strategies, and Solutions

Task 8

- Final Report and Documentation – Freight, Goods and Services Plan

Plans

Worksheet
Reminder

How Important are You?

MAP-21 recommends it...

CORE MPO is seeking it...

Plan will fall short without it...

Freight Transportation
Plan is Not Your Plan,
Unless it has it...



Going Forward

CORE MPO Freight Transportation Plan, Phase II - Deliverable Schedule

Task	Name	Start Date	Finish Date
1	Project Management	Monday, January 06, 2014	Friday, December 19, 2014
1.1	Project Management	Monday, February 17, 2014	Friday, December 19, 2014
1.2	Freight Advisory Committee	Monday, February 24, 2014	Friday, December 19, 2014
2	Freight Needs Assessment and Analysis	Monday, February 24, 2014	Friday, July 18, 2014
2.1	Existing and Future Freight and Goods Movement Assessment	Monday, February 24, 2014	Friday, May 02, 2014
2.2	Develop Performance Measures	Monday, February 24, 2014	TBD
2.3	Forecasting Future Freight Growth	Monday, April 21, 2014	Friday, May 23, 2014
2.4	Regional Freight Profiles Development and Assessment	Monday, February 24, 2014	Friday, April 18, 2014
FAC1	FAC Meeting #1	Wednesday, May 07, 2014	Wednesday, May 07, 2014
2.5	Freight Network Bottleneck, and Safety and Security Issues Identification	Monday, March 03, 2014	Friday, June 06, 2014
2.6	Freight Needs Assessment	Monday, June 09, 2014	Friday, August 08, 2014
3	Land Use Assessment and Analysis	Monday, April 21, 2014	Friday, July 18, 2014
3.1	Assessment and Analysis of Land Use Policies and Local Decision-making within Regional Freight and Goods Movement Context	Monday, April 21, 2014	Friday, June 06, 2014
3.2	Assessment of Freight and Goods Movement Impact on Land Use in Region	Monday, June 09, 2014	Friday, July 18, 2014
4	Economic Development Market Assessment	Wednesday, June 11, 2014	Friday, August 08, 2014
5	Environmental and Community Impact Scan and Analysis	Monday, April 21, 2014	Friday, June 27, 2014
FAC2	FAC Meeting #2	Wednesday, August 13, 2014	Wednesday, August 13, 2014
6	Recommendations for Future Land Uses Related to Freight and Goods Movement Needs and Forecasts	Thursday, August 14, 2014	Monday, September 29, 2014
7	Final Recommendations -Identification of Improvements, Strategies, and Solutions	Monday, September 29, 2014	Friday, November 21, 2014
FAC3	FAC Meeting #3	Wednesday, December 03, 2014	Wednesday, December 03, 2014
8	Final Report and Documentation – Freight, Goods, and Services Plan	Monday, November 24, 2014	Friday, December 19, 2014
FAC4	Post-Plan Completion Presentation	TBD	TBD



1.2 Freight Advisory Committee

By the end of this study, we will finalize

- Membership
- Duties and Responsibilities
- Meeting Frequencies
- Meeting Times and Locations
- Bylaws



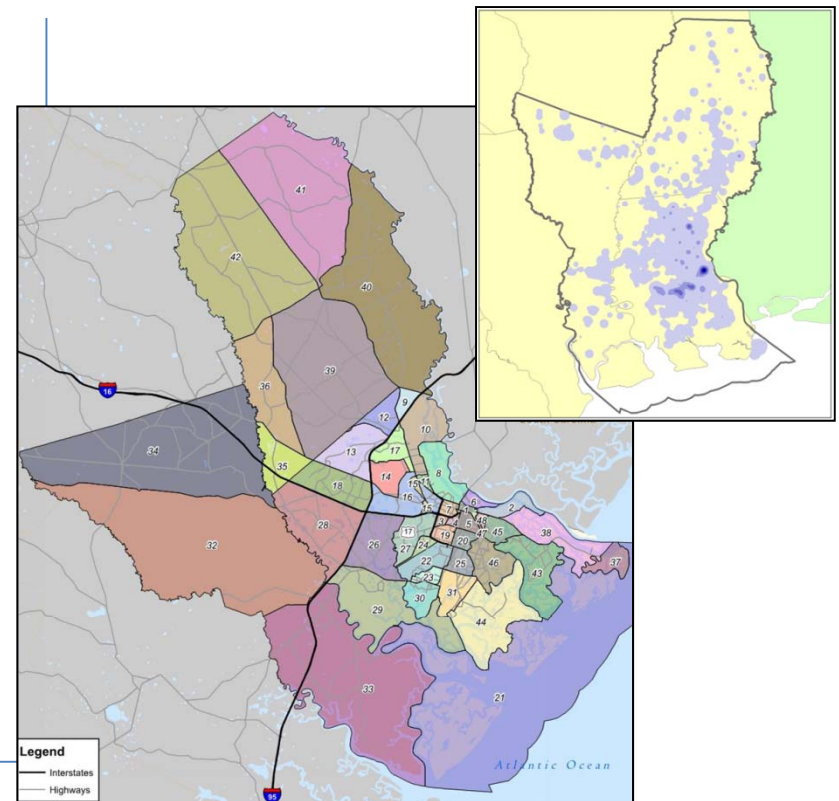
2.1 Existing and Future..



- 1. Introduction
 - 1.1 Study Purpose
 - 1.2 Data Reference List
- 2. Data sources
 - 2.1 National Level
 - 2.1.1 FAF
 - 2.1.2 LEHD
 - 2.2 State Level
 - 2.2.1 Rail
 - 2.2.2 Georgia Statewide Freight and Logistics Plan (December 2011)
 - 2.2.3 Crash Data
 - 2.2.4 Traffic Data
 - 2.2.5 Bottlenecks
 - 2.3 MPO Level
 - 2.3.1 CORE MPO Travel Demand Model
 - 2.3.2 Airport Data
 - 2.3.3 Port Assessment
 - 2.3.4 SEDA
 - 2.3.5 Other
- 3. FAF DISAGGREGATION
 - 3.1 Purpose of Disaggregation
 - 3.2 Disaggregation Inputs
 - 3.2.1 Zonal Data
 - 3.2.2 FAF Version 3 Data
 - 3.2.3 Additional Data
 - 3.3 Disaggregation Outputs
- 4. Next Steps

2011	Into		Out Of		Internal	
	Ktons	\$M	Ktons	\$M	Ktons	\$M
Truck	37,663.7	38,794.5	42,243.3	64,684.1	16,691.6	15,878.6
Rail	7,731.6	3,110.3	2,926.4	2,025.4	646.2	289.4
Water	3,008.8	2,396.5	7.0	4.0	5.2	0.7
Air	2.2	489.9	3.8	1,090.7	-	2.0
Multiple modes & other	15,504.8	15,313.3	11,421.9	12,883.4	9,016.3	4,478.1

Source: Freight Analysis Framework, <http://faf.ornl.gov/fafweb/Default.aspx>



2.2 Performance Measures



Consistent with:

- Moving Ahead for Progress in the 21st Century Act (MAP-21)
- CORE MPO 2035 LRTP Framework Mobility Plan
- FY2013-2016 Transportation Improvement Program
- Chatham County-Savannah Tricentennial Comprehensive Plan
- 2013 Georgia Statewide Strategic Transportation Plan
- Georgia Statewide Freight and Logistics Plan, 2010-2050

1. Introduction	
1.1	Performance Measures and the Public Sector
1.2	National Focus: MAP-21
1.3	Performance Measures and the CORE MPO
2. Goals and Objectives	
2.1	National Freight Policy Goals
2.2	State Goals
2.3	CORE MPO Goals
3. Development of Freight Performance Measures	
3.1	National Performance Measures and Requirements
3.2	Existing State Measures
3.3	Existing CORE MPO Measures
3.4	Examples from Other States
4. Recommended Freight Performance Measures	
4.1	Application and Implementation
5. Next Steps	

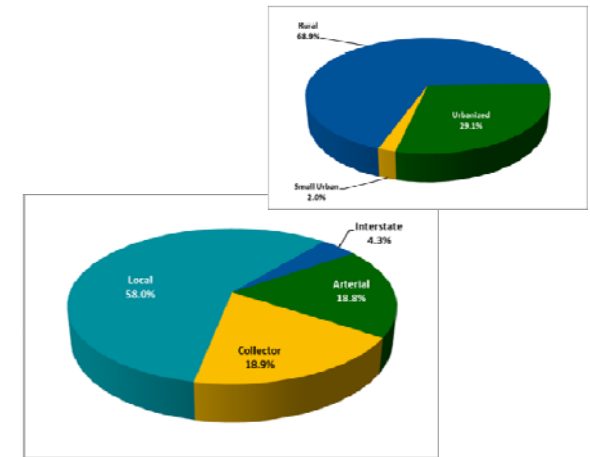
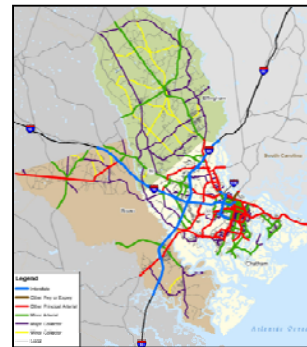
Program	Measure Category	States to Establish Targets:
National Highway Performance Program	Interstate Pavement Condition on the NHS	Within 1 year of final rule on national performance measures
	Non-Interstate Pavement Condition on the NHS	
	Bridge Condition on NHS	
	Performance of Interstate System	
	Performance of Non-Interstate NHS	
Highway Safety Improvement Program	Serious Injuries per VMT	Within 1 year of final rule on national performance measures
	Fatalities per VMT	
	Number of Serious Injuries	
	Number of Fatalities	
Congestion Mitigation and Air Quality	Traffic Congestion	Within 1 year of final rule on national performance measures
	On-road mobile source emissions	
Freight Policy	Freight Movement on the Interstate	Periodically

Source: Federal Highway Administration, Office of Policy and Governmental Affairs, 2012

2.4 Regional Profiles



1. Introduction
2. Highway System Freight Profile
 - 2.1 Functional Class Descriptions
 - 2.1.1 Interstate and Freeway
 - 2.1.2 Arterial
 - 2.1.3 Collector
 - 2.1.4 Local
 - 2.2 Study Area Summary
 - 2.3 Pavement Condition
 - 2.4 Railroad Crossings
 - 2.5 Bridges
3. Rail System Profile
 - 3.1 Existing Needs and Issues
4. Air Cargo Profile
 - 4.1 Savannah-Hilton Head International Airport (SAV)
 - 4.2 Hunter AAF (SVN)
 - 4.3 Hodges Air Park (GA39)
 - 4.4 Swaids Field (2GA2)
 - 4.5 Briggs Field (GA43)
 - 4.6 Briar Patch (9GA1)
 - 4.7 Existing Needs and Issues
5. Intermodal System Profile
6. Port System Profile
 - 6.1 Port of Savannah
 - 6.1.1 Garden City Terminal
 - 6.1.2 Ocean Terminal
 - 6.2 Existing Needs & Issues



Port	Number of Vessel Calls	Capacity of Calls
Savannah	2,219	112,557

Source: <http://www.navigationdatacenter.us/>

Commodity	Georgia Central	Golden Isles	Savannah Port
Automobiles		X	
Coal	X		
Chemicals	X	X	X
Farm & Food Products	X	X	
Forest	X		
Stone	X		
Plastics	X		
Paper	X		X
Intermodal			X
Machinery			X

Source: Genesse & Wyoming, INC., <http://www.gwrr.com>

Ten Minutes!



Workshop



2.5 “Hot Spots”, Bottlenecks

What are “Hot Spots”?

How do we identify them?

How are they analyzed?

What are Bottlenecks?

How do we identify them?

How are they analyzed?



“Hot Spot” Analysis



Bottlenecks Analysis



Next Steps

- Finish and Draft
 - 2.2 Performance Measures
 - 2.5 Bottlenecks and Safety and Security Issues Identification
 - 2.6 Freight Needs Assessment
- Conduct and Complete
 - Task 3 Land Use Assessment and Analysis
 - Task 4 Economic Development Market Assessment
 - Task 5 Environmental and Community Impact Scan and Analysis
- Discuss each of these task's outcomes with you
- Hold a workshop on *Land Use Recommendations*



Next FAC Meeting

- Mark your calendar – **Wednesday, August 13, 2014**
- Meeting location – any suggestions?

Freight Study Website

<http://www.thempc.org/Transportation/FreightTransportationPlan.html>



Thank You!

