



CORE MPO Freight Transportation Plan

Project Advisory Committee
December 16, 2015

Agenda

9:30 - 9:40

Welcome-Introductions

9:40 - 10:10

Recap of Previous EDFAC Meetings and Tech Memos

10:10 – 10:40

Land Use Analysis and Recommendations

- Benefits and impacts of freight-related uses
- Review of list land use policies and recommendations

10:40 – 10:50

BREAK

10:50 – 11:20

Infrastructure Improvements Recommendations

- Comments from previous meetings
- Review of final freight-related recommendations

11:20 – 11:50

Remaining Steps for the CORE MPO
Transportation Plan

- Plan/Documentation/Reports Completion
- EDFAC
 - EDFAC Bylaws
 - Election of Chairman
 - Future Meeting Dates
 - Future Meeting Locations

11:50 – 12:00

Conclusion and Adjournment



Recap of the CORE MPO Freight Study

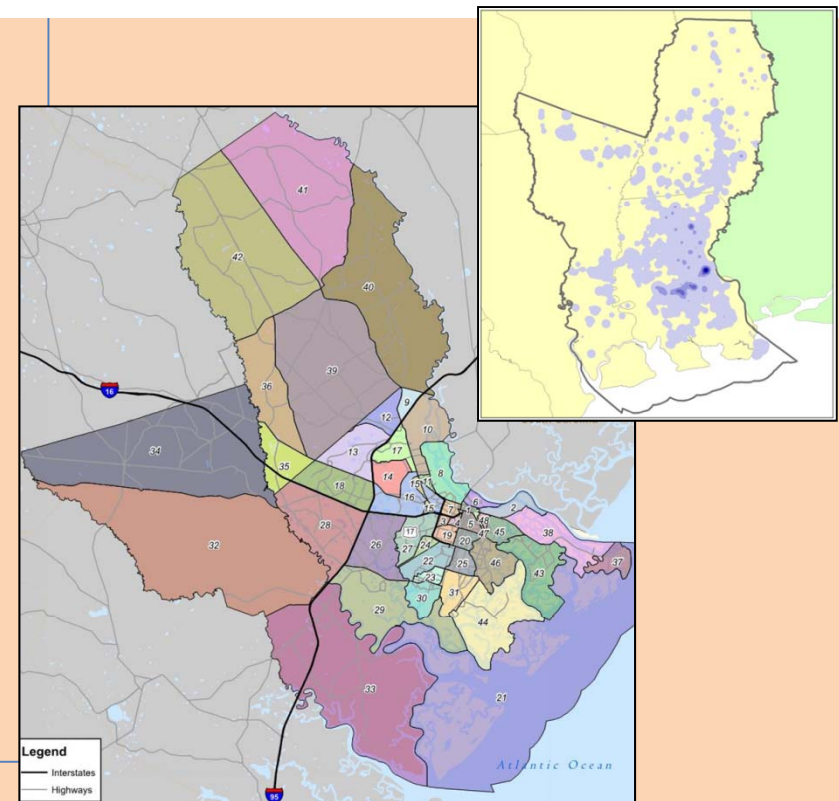


2.1 Existing and Future Freight Assessment

1. Introduction
 - 1.1 Study Purpose
 - 1.2 Data Reference List
2. Data sources
 - 2.1 National Level
 - 2.1.1 FAF
 - 2.1.2 LEHD
 - 2.2 State Level
 - 2.2.1 Rail
 - 2.2.2 Georgia Statewide Freight and Logistics Plan (December 2011)
 - 2.2.3 Crash Data
 - 2.2.4 Traffic Data
 - 2.2.5 Bottlenecks
 - 2.3 MPO Level
 - 2.3.1 CORE MPO Travel Demand Model
 - 2.3.2 Airport Data
 - 2.3.3 Port Assessment
 - 2.3.4 SEDA
 - 2.3.5 Other
3. FAF DISAGGREGATION
 - 3.1 Purpose of Disaggregation
 - 3.2 Disaggregation Inputs
 - 3.2.1 Zonal Data
 - 3.2.2 FAF Version 3 Data
 - 3.2.3 Additional Data
 - 3.3 Disaggregation Outputs
4. Next Steps

2011	Into		Out Of		Internal	
	Ktons	\$M	Ktons	\$M	Ktons	\$M
Truck	37,663.7	38,794.5	42,243.3	64,684.1	16,691.6	15,878.6
Rail	7,731.6	3,110.3	2,926.4	2,025.4	646.2	289.4
Water	3,008.8	2,396.5	7.0	4.0	5.2	0.7
Air	2.2	489.9	3.8	1,090.7	-	2.0
Multiple modes & other	15,504.8	15,313.3	11,421.9	12,883.4	9,016.3	4,478.1

Source: Freight Analysis Framework, <http://faf.ornl.gov/fafweb/Default.aspx>



2.2 Performance Measures

Consistent with:

- Moving Ahead for Progress in the 21st Century Act (MAP-21)
- CORE MPO 2035 LRTP Framework Mobility Plan
- FY2013-2016 Transportation Improvement Program
- Chatham County-Savannah Tricentennial Comprehensive Plan
- 2013 Georgia Statewide Strategic Transportation Plan
- Georgia Statewide Freight and Logistics Plan, 2010-2050

1. Introduction

- 1.1 Performance Measures and the Public Sector
- 1.2 National Focus: MAP-21
- 1.3 Performance Measures and the CORE MPO

2. Goals and Objectives

- 2.1 National Freight Policy Goals
- 2.2 State Goals
- 2.3 CORE MPO Goals

3. Development of Freight Performance Measures

- 3.1 National Performance Measures and Requirements
- 3.2 Existing State Measures
- 3.3 Existing CORE MPO Measures
- 3.4 Examples from Other States

4. Recommended Freight Performance Measures

- 4.1 Application and Implementation

5. Next Steps

Program	Measure Category	States to Establish Targets:
National Highway Performance Program	Interstate Pavement Condition on the NHS	Within 1 year of final rule on national performance measures
	Non-Interstate Pavement Condition on the NHS	
	Bridge Condition on NHS	
	Performance of Interstate System	
	Performance of Non-Interstate NHS	
Highway Safety Improvement Program	Serious Injuries per VMT	Within 1 year of final rule on national performance measures
	Fatalities per VMT	
	Number of Serious Injuries	
	Number of Fatalities	
Congestion Mitigation and Air Quality	Traffic Congestion	Within 1 year of final rule on national performance measures
	On-road mobile source emissions	
Freight Policy	Freight Movement on the Interstate	Periodically

Source: Federal Highway Administration, Office of Policy and Governmental Affairs, 2012

2.3 Forecasting Future Freight Growth

1. PURPOSE AND DATA SOURCES

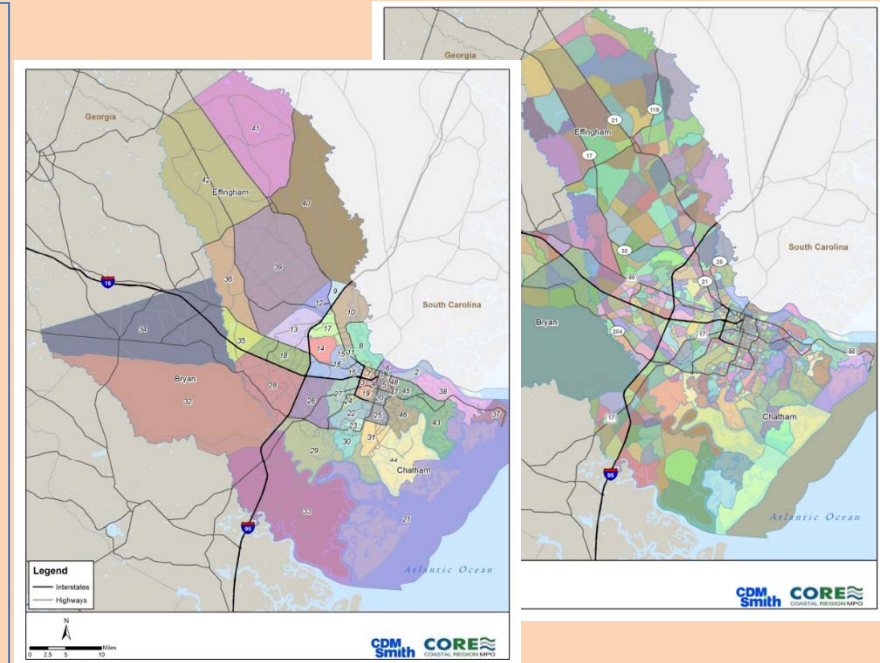
- 1.1 Purpose
- 1.2 Data Sources
 - 1.2.1 FAF
 - 1.2.2 LEHD

2. DISAGGREGATION METHODOLOGY

- 2.1 Disaggregation Inputs
 - 2.1.1 Zonal Data
 - 2.1.2 FAF Version 3 Data
 - 2.1.3 LEHD and CBP Data
 - 2.1.4 Other Data Sources
- 2.2 Disaggregation Procedure
 - 2.2.1 Development of Regression Equations
 - 2.2.2 Development of Expansion Factors

3. DISAGGREGATION OUTPUTS

- 3.1 Truck Imports/Exports
- 3.2 Rail Imports/Exports
- 3.3 Water Imports/Exports
- 3.4 Air Imports/Exports



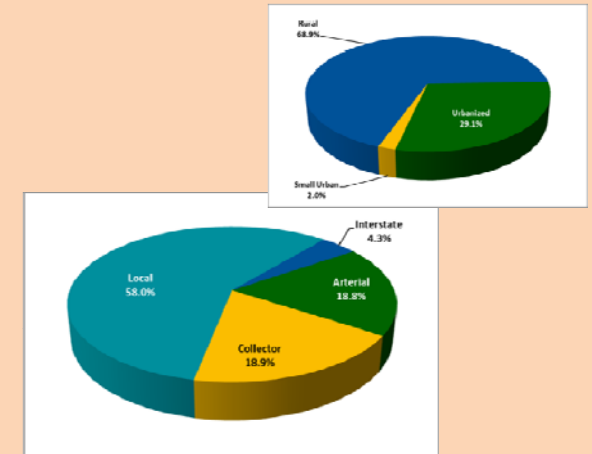
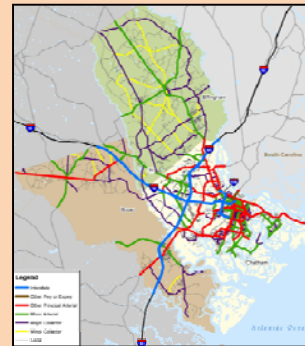
2011	Into Savannah FAF Region		Out Of Savannah FAF Region		Internal		2040	Into Savannah FAF Region		Out Of Savannah FAF Region		Internal	
	KTons	\$M	KTons	\$M	KTons	\$M		KTons	\$M	KTons	\$M	KTons	\$M
Truck	37,663.7	38,794.5	42,243.3	64,684.1	16,691.6	15,878.6	Truck	85,123.1	103,822.2	89,371.6	170,871.0	31,256.2	36,468.0
Rail	7,731.6	3,110.3	2,926.4	2,025.4	646.2	289.4	Rail	11,516.8	6,042.2	5,866.8	5,866.5	1,426.5	613.3
Water	3,008.8	2,396.5	7.0	4.0	5.2	0.7	Water	2,354.5	1,868.1	20.8	4.5	15.4	2.2
Air	2.2	489.9	3.8	1,090.7	-	2.0	Air	6.5	1,335.3	11.8	3,416.7	5,054.8	5,305.0
Multiple modes & other	15,504.8	15,313.3	11,421.9	12,883.4	9,016.3	4,478.1	Multiple modes & other	35,883.6	46,514.0	26,936.9	38,534.2	15,679.2	6,132.0

Source: Freight Analysis Framework, <http://faf.ornl.gov/fafweb/Default.aspx>

Source: Freight Analysis Framework, <http://faf.ornl.gov/fafweb/Default.aspx>

2.4 Regional Network Profiles

1. Introduction
2. Highway System Freight Profile
 - 2.1 Functional Class Descriptions
 - 2.1.1 Interstate and Freeway
 - 2.1.2 Arterial
 - 2.1.3 Collector
 - 2.1.4 Local
 - 2.2 Study Area Summary
 - 2.3 Pavement Condition
 - 2.4 Railroad Crossings
 - 2.5 Bridges
3. Rail System Profile
 - 3.1 Existing Needs and Issues
4. Air Cargo Profile
 - 4.1 Savannah-Hilton Head International Airport (SAV)
 - 4.2 Hunter AAF (SVN)
 - 4.3 Hodges Air Park (GA39)
 - 4.4 Swaids Field (2GA2)
 - 4.5 Briggs Field (GA43)
 - 4.6 Briar Patch (9GA1)
 - 4.7 Existing Needs and Issues
5. Intermodal System Profile
6. Port System Profile
 - 6.1 Port of Savannah
 - 6.1.1 Garden City Terminal
 - 6.1.2 Ocean Terminal
 - 6.2 Existing Needs & Issues



Port	Number of Vessel Calls	Capacity of Calls
Savannah	2,219	112,557

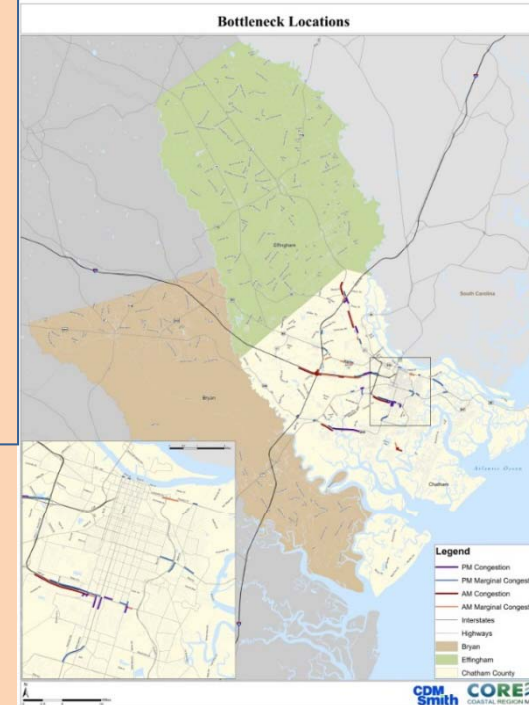
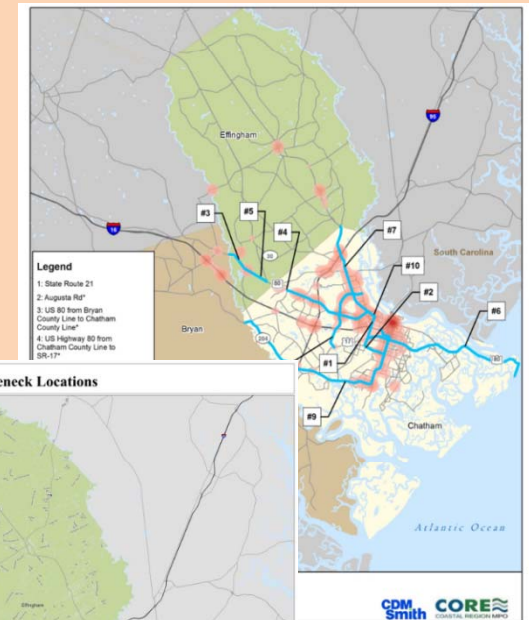
Source: <http://www.navigationdatacenter.us/>

Commodity	Georgia Central	Golden Isles	Savannah Port
Automobiles		X	
Coal	X		
Chemicals	X	X	X
Farm & Food Products	X	X	
Forest	X		
Stone	X		
Plastics	X		
Paper	X		X
Intermodal			X
Machinery			X

Source: Genesee & Wyoming, INC., <http://www.gwrr.com>

2.5 Freight Network Bottleneck, Safety Security Issues

1. Introduction
2. Safety and Security
 - 2.1 Data
 - 2.1.1 Georgia Department of Transportation (GDOT)
 - 2.1.2 Federal Railroad Administration
 - 2.2 Methodology
 - 2.2.1 Crash Density Mapping
 - 2.2.2 Hot Spot Segment Identification
 - 2.3 Results
 - 2.3.1 Top Ten Hot Spot Locations
 - 2.3.2 Overlay with Crash Densities
3. Bottlenecks
 - 3.1 Data
 - 3.1.1 Georgia Department of Transportation
 - 3.2 Methodology
 - 3.2.1 Data Processing
 - 3.2.2 Selection Methodology
 - 3.3 Results
 - 3.3.1 Additional Locations from Freight Advisory Committee Meeting #2
4. Next Steps



2.6 Freight Needs Assessment

1. Introduction

- 1.1 Background and Purpose
- 1.2 Methodology
- 1.3 Data Sources for FAF Disaggregation
 - 1.3.1 Zonal Data
 - 1.3.2 FAF Data
 - 1.3.3 LEHD and CBP Data
- 1.4 Content Organization

2. Regional Multimodal Freight Overview

- 2.1 Highway System Profile
 - 2.1.1 Roadway Network
 - 2.1.2 Pavement Condition
 - 2.1.3 Railroad Crossings
 - 2.1.4 Bridges
- 2.2 Air Cargo System Profile
 - 2.2.1 Facilities
- 2.3 Rail System Profile
- 2.4 Maritime Transport System Profile
 - 2.4.1 Facilities
- 2.5 Connectivity to Intermodal System Profile

3. Future Freight Demand

- 3.1 Projected Commodity Flow
 - 3.1.1 Truck Imports/Exports
 - 3.1.2 Rail Imports/Exports
 - 3.1.3 Water Imports/Exports
 - 3.1.4 Air Imports/Exports

4. Freight Trends, Needs, Issues, and Deficiencies

- 4.1 Freight Infrastructure
 - 4.1.1 Rail System
 - 4.1.2 Air Cargo
 - 4.1.3 Maritime Transport System
- 4.2 Freight Generators
 - 4.2.1 Distribution
 - 4.2.2 Government and Military
 - 4.2.3 Healthcare
 - 4.2.4 International
 - 4.2.5 Manufacturing
- 4.3 Land Use Conflicts
- 4.4 Safety and Security
 - 4.4.1 Crash Hot Spots Analysis
 - 4.4.2 Potential Crash Hot Spot Locations from Freight Advisory Committee
- 4.5 System Capacity
 - 4.5.1 Traffic Count Data
 - 4.5.2 Network Bottlenecks
 - 4.5.3 Potential Bottleneck Locations from Freight Advisory Committee

5. Freight Performance Measures

- 5.1 Next Planning Steps
- 5.2 Existing Measures
 - 5.2.1 National
 - 5.2.2 State
 - 5.2.3 CORE MPO
 - 5.2.4 Other States
- 5.3 Recommended Measures
 - 5.3.1 Framework
 - 5.3.2 Application and Implementation



4 Economic Assessment

1. Introduction
 - 1.1 Purpose
 - 1.2 Economy and Population
2. Economic Role of Freight
 - 2.1 Major Freight Industries and Commodities
 - 2.1.1 Manufacturing
 - 2.1.2 Transportation and Warehousing
 - 2.2 Labor Force and Employment
 - 2.3 Relationships with Other Regions
3. Supply Chain and Transportation
 - 3.1 Supply Chain Overview
 - 3.2 Roadway
 - 3.3 Rail
 - 3.4 Water
 - 3.5 Air
 - 3.6 Other Freight Facilities
4. Areas of Future Growth
 - 4.1 Industry Growth Forecast
 - 4.2 Impacts on Freight Transportation
5. Next Steps

Top Ten Exports and Imports (in 2012)

Rank	Exports		Imports	
	Commodity	Amount (in TEUs)	Commodity	Amount (in TEUs)
1	Wood pulp	178,654	Furniture	143,412
2	Food	157,531	Retail and consumer goods	132,244
3	Paper and paperboard	144,710	Machinery, appliances, and electronics	121,482
4	Clay	97,054	Hardware and housewares	98,877
5	Automotive	87,778	Automotive	96,576
6	Machinery, appliances, and electronics	80,761	Food	80,078
7	Fabrics/raw cotton	74,877	Apparel	55,800
8	Chemicals	73,871	Toys	49,666
9	Retail and consumer goods	63,299	Minerals	49,373
10	Resins and rubber	61,021	Chemicals	36,436
	Other	214,324	Other	220,900
	Total	1,233,877	Total	1,084,844

Source: Georgia Center of Innovation and Logistics: 2013 Georgia Logistics Report

Top Fifteen Manufacturing Companies and Commodities

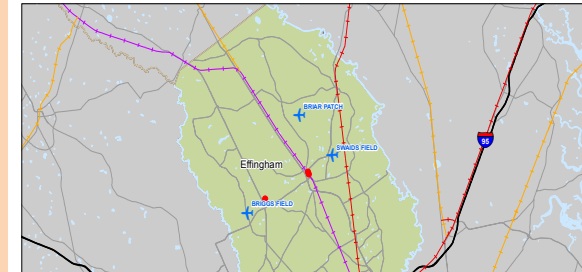
Company	Commodity/Service
Gulfstream Aerospace Corporation	Jet aircraft, Aerospace equipment
International Paper	Paper products, Chemicals, Corrugated containers and packaging
JCB Americas, Inc.	Agricultural equipment, Construction equipment
Imperial Sugar	Refined sugar
Brasseler USA, Inc.	Dental instruments
Mitsubishi Power Systems Americas, Inc.	Power plant gas and steam turbines
Weyerhaeuser	Bleached pulp
Derst Baking Company	Bread, rolls, cakes
Diamond Crystal Brand	Salt, Pepper, Sugar packaging
Roger Wood Foods	Smoked sausages, Smoked meats
Kerry Ingredients and Flavours	Formulation, manufacture, and containerization of technological-based flavors, ingredients, and integrated solutions
Savannah Morning News	Information company
Arizona Chemical	Specialty resins, Pine-based chemicals
EMD Chemical	Industrial pigments
Oratol	Adhesive film

Source: Savannah Economic Development Authority, April 2014

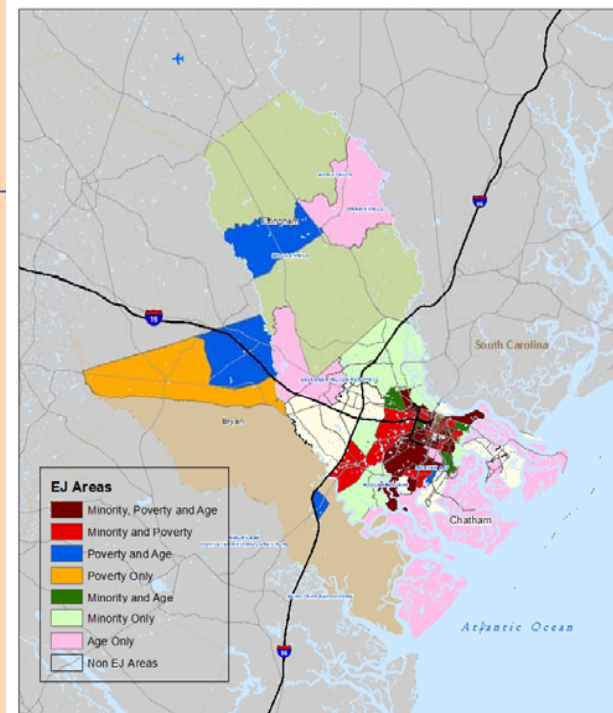
5 Community Scan

1. Introduction
2. Community and Environmental Justice Analysis
 - 2.1 Environmental Justice Analysis
 - 2.1.1 Environmental Justice
 - 2.1.2 Environmental Justice Analysis
 - 2.1.3 Impact of Freight Movement and Freight Facilities on Environmental Justice Areas
 - 2.2 Cultural Resources Analysis
 - 2.3 Natural Resource Analysis
3. Freight Impact Mitigation
 - 3.1 General Freight Impacts
 - 3.2 Prevention and Mitigation of Freight Impacts
4. Next Steps

Historic and Cultural Resources



Environmental Justice Areas





Freight Related Land Use Analysis

Freight Related Land Use Analysis

- Existing Zoning – Where are the current Freight-Related Zoning areas in the study area?
- Existing Land Use – Where are the current Freight-Related Land Use areas in the study area?
- Freight Possibilities – Where could Freight-Related Land Use occur in the study area?



Freight Related Land Use Analysis – Data Collection

- 2033 Chatham County-Savannah Tri-centennial Plan,
- Bryan County and the Cities of Pembroke and Richmond Hill Joint Comprehensive Plan,
- 2027 Effingham County and the Cities of Guyton, Rincon, and Springfield Joint Comprehensive Plan, and,
- Zoning Ordinances for all applicable jurisdictions



Freight Related Land Use Activities within CORE MPO Study Area

- Warehousing
- Transportation-related facilities and infrastructure such as aviation, seaports, highway corridors, freight terminals and intermodal facilities
- Distribution centers and wholesale trade facilities
- Manufacturing
- Industrial activities



Freight Related Land Uses Identification by County and Municipalities

County	Municipality	Freight-Related Land Use
Bryan		Corridor/Gateway Regional Commercial
	Pembroke	Highway Commercial Industrial
	Richmond Hill	Commercial Corridor/Gateway Mixed Use
Chatham		Commercial – Regional Commercial – Marine Industry – Light Industry – Heavy Transportation/Communication/Utilities
Effingham		Industrial Transportation/Utilities



Freight Related Zoning Categories by County and Municipalities

County	Municipality	Freight-Related Zoning Category	
Chatham ¹		Business Business Limited Business General Heavy Industrial Light Industrial	Manufacturing Planned Light Industrial Transition Waterfront Industry
	Bloomingtondale	General Commercial Intensive Industry Extensive Industry	
	Garden City	Industrial	
	Pooler	Industrial, light district Industrial, heavy district	
	Port Wentworth	Economic Development Zone Industrial Planned Industrial	
	Savannah ¹	General Business General Business Transition General Business Transition 2 Highway Business	Heavy Industrial Light Industrial Light Industrial Business Manufacturing
	Thunderbolt	Light Industrial Industrial Waterfront Industry	
	Tybee Island	Maritime District	

¹ Planned Development versions of the listed uses are also considered Freight-Related



Freight Related Zoning Categories by County and Municipalities

County	Municipality	Freight-Related Zoning Category
Bryan		General Commercial District General Industrial District Interchange Commercial District Light Industrial District Waterfront Commercial - Industrial
	Effingham	Highway Commercial Districts Industrial Districts
	Guyton	Industrial
	Rincon	General Commercial Use District Limited Industrial Use District General Industrial Use District Planned Unit Development-MXU
	Springfield	General Commercial District Industrial District



Freight-Related Zoning

Legend

- GC (Green line)
- SAPT (Yellow line)
- OGEE (Light blue line)
- CSXT (Black line with cross-ticks)
- NS (Red line)
- Other Short Line (Light blue line)
- Interstates (Thick black line)
- Highways (Thin black line)
- Zoning Data Not Available (Light green)
- Freight-Related Zoning (Orange)
- Wetlands and Other Waterbodies (Light blue)
- Bryan (Brown)
- Effingham (Light green)
- Chatham County (Light yellow)
- Other GA Counties (Grey)

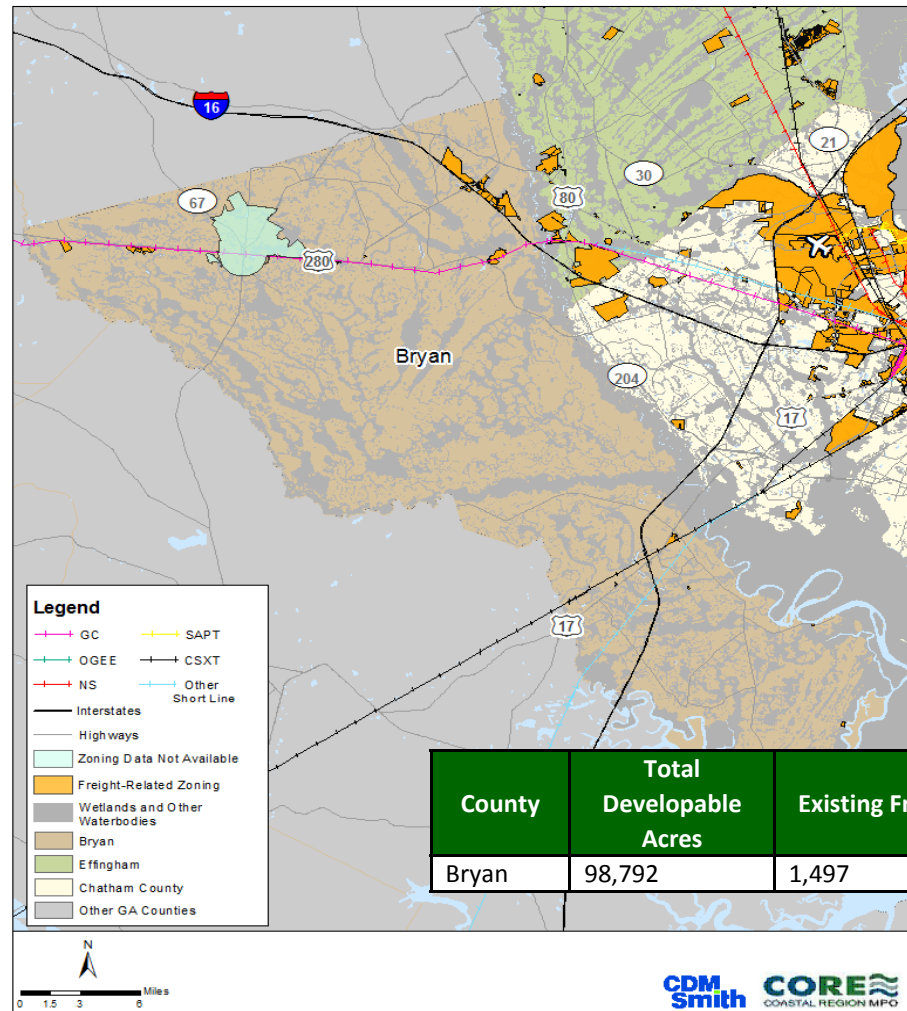
County

Total Developable Acres

County	Total Developable Acres	Existing Freight-Related Zoning	Percentage of Land Currently Zoned for Freight-Related Uses
Bryan	98,792	1,497	1.52%
Chatham	140,772	25,442	18.07%
Effingham	189,121	7,686	4.06%
Total ²	428,685	34,625	8.08%

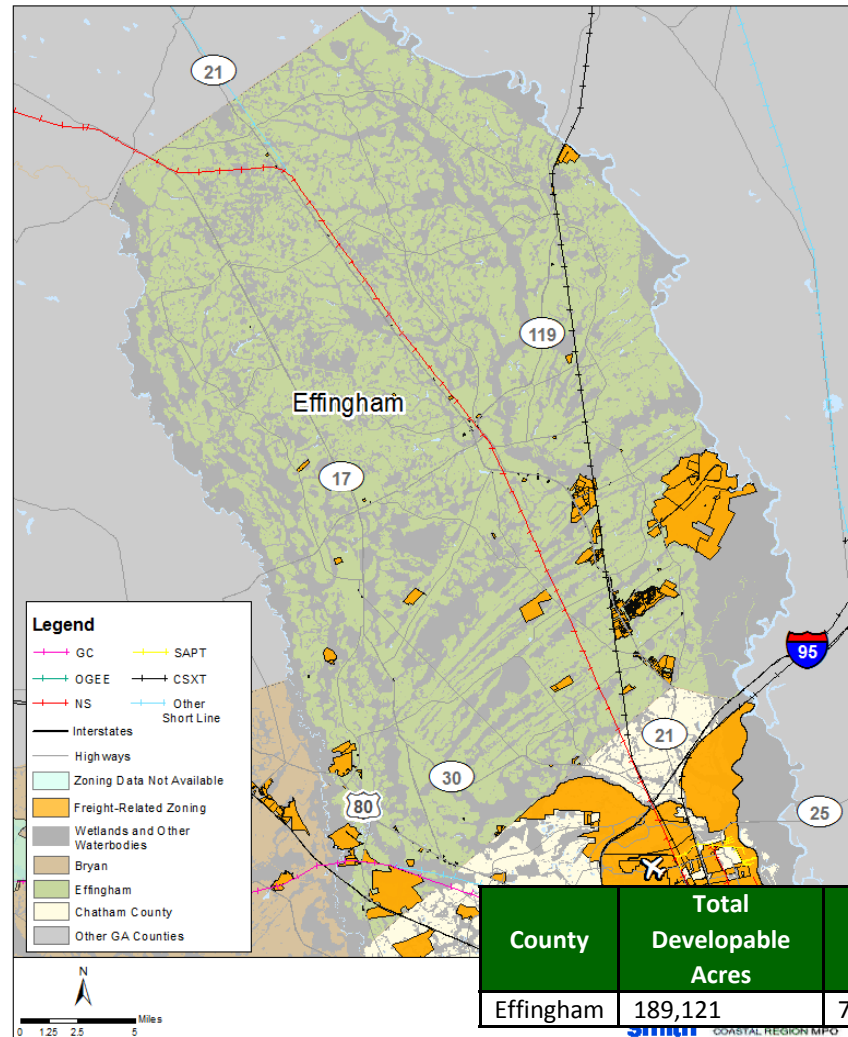
Existing Zoning – Bryan County

Freight-Related Zoning



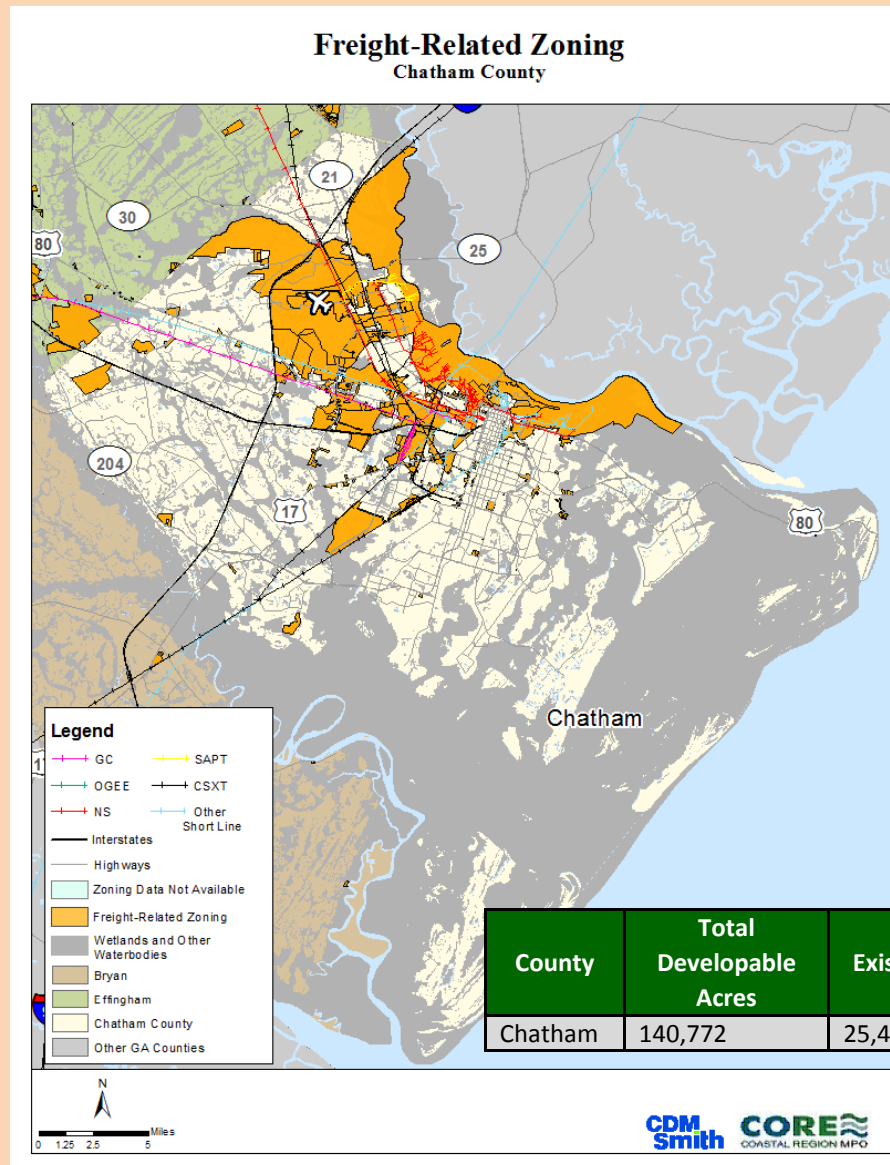
Existing Zoning – Effingham County

Freight-Related Zoning



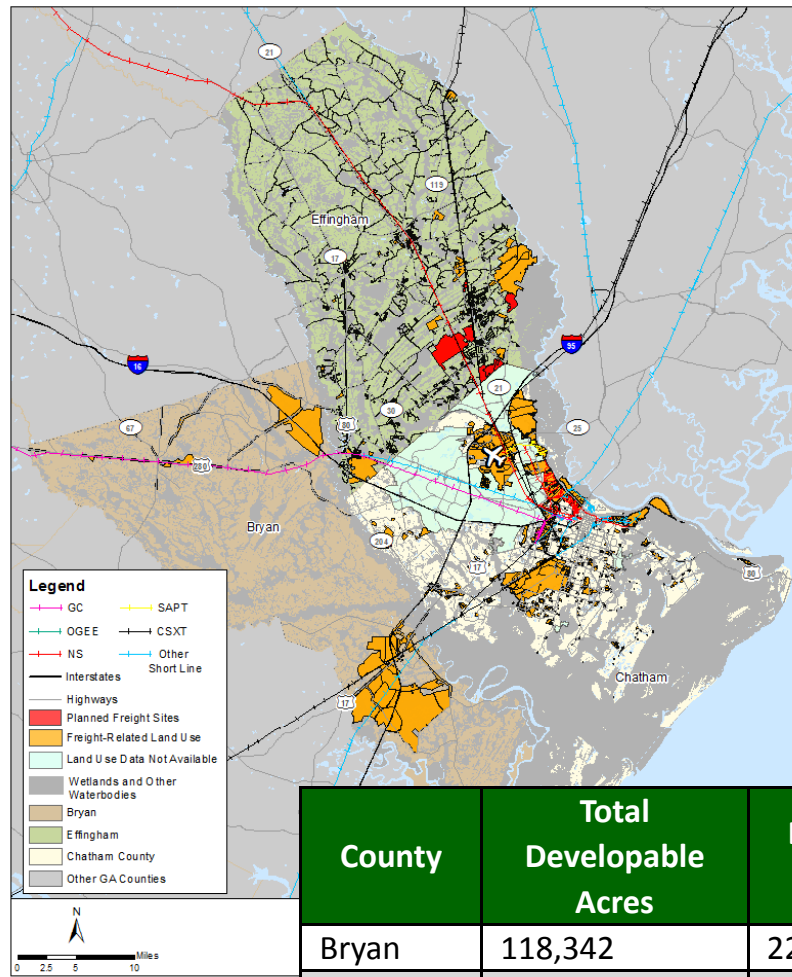
County	Total Developable Acres	Existing Freight-Related Zoning	Percentage of Land Currently Zoned for Freight-Related Uses
Effingham	189,121	7,686	4.06%

Existing Zoning – Chatham County



Existing Land Use – Study Area

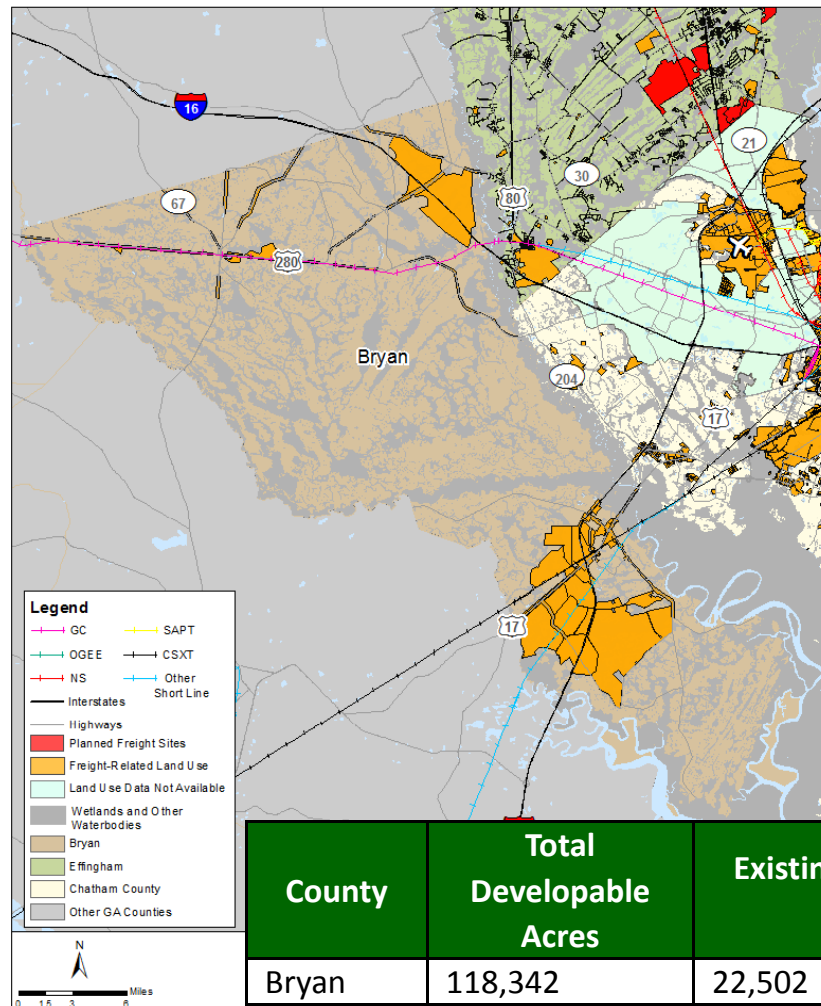
Freight-Related Land Uses



County	Total Developable Acres	Existing Freight-Related Land Use	Percentage of Land Currently Utilized for Freight-Related Uses
Bryan	118,342	22,502	19.02%
Chatham	98,343	25,344	25.76%
Effingham	192,934	13,189	6.84%
Total	409,619	61,035	14.90%

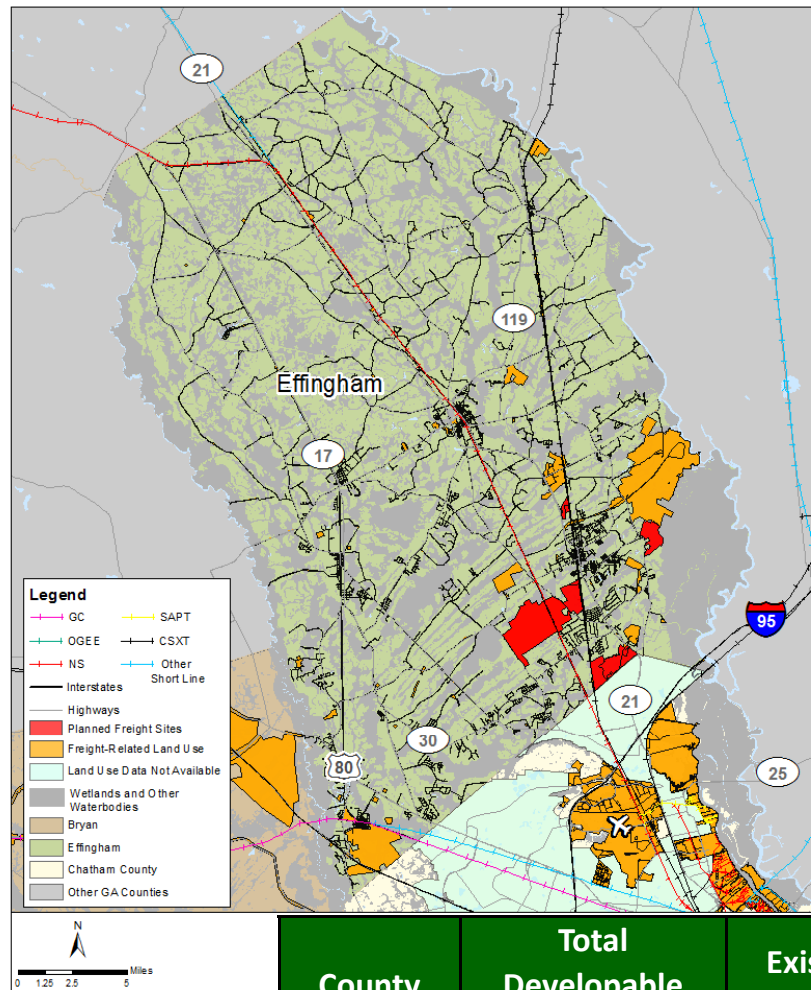
Existing Land Use – Bryan County

Freight-Related Land Uses



Existing Land Use – Effingham County

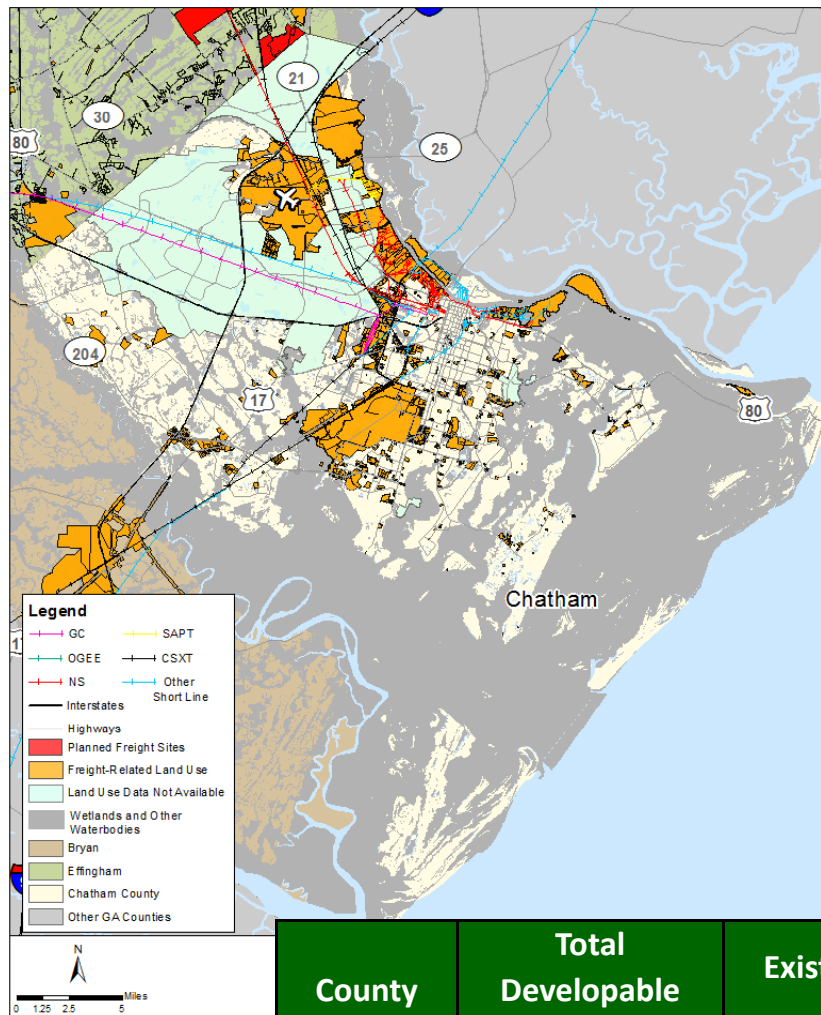
Freight-Related Land Uses



County	Total Developable Acres	Existing Freight-Related Land Use	Percentage of Land Currently Utilized for Freight-Related Uses
Effingham	192,934	13,189	6.84%

Existing Land Use – Chatham County

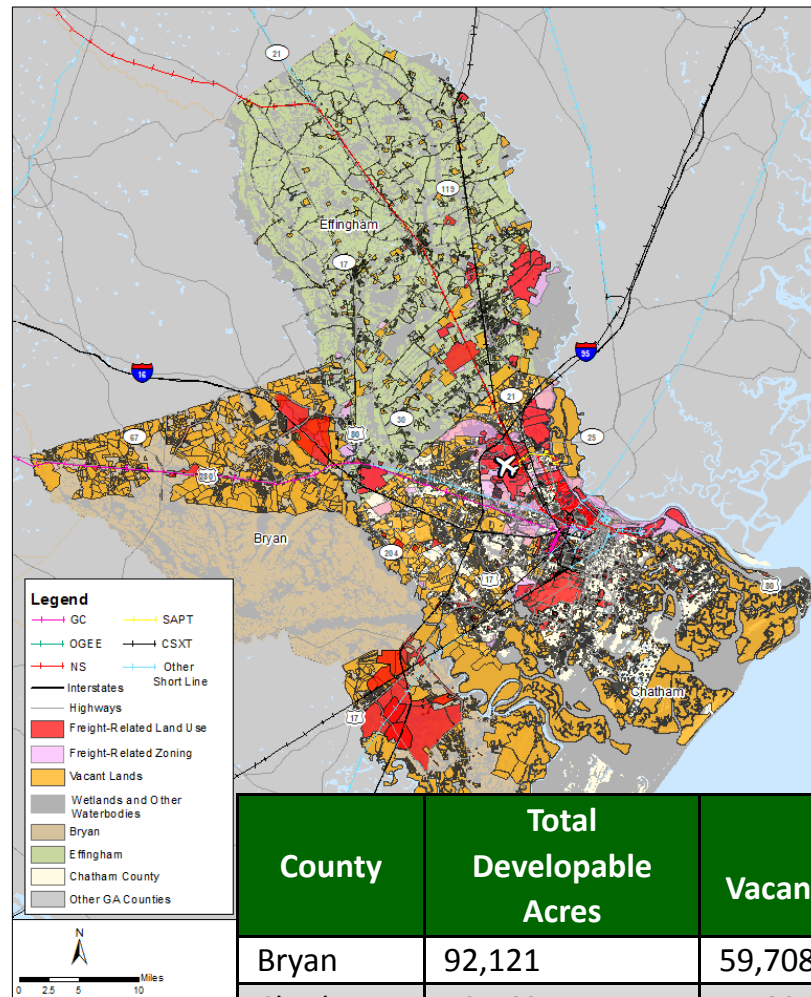
Freight-Related Land Uses



County	Total Developable Acres	Existing Freight-Related Land Use	Percentage of Land Currently Utilized for Freight-Related Uses
Chatham	98,343	25,344	25.76%

Freight Possibilities – Study Area

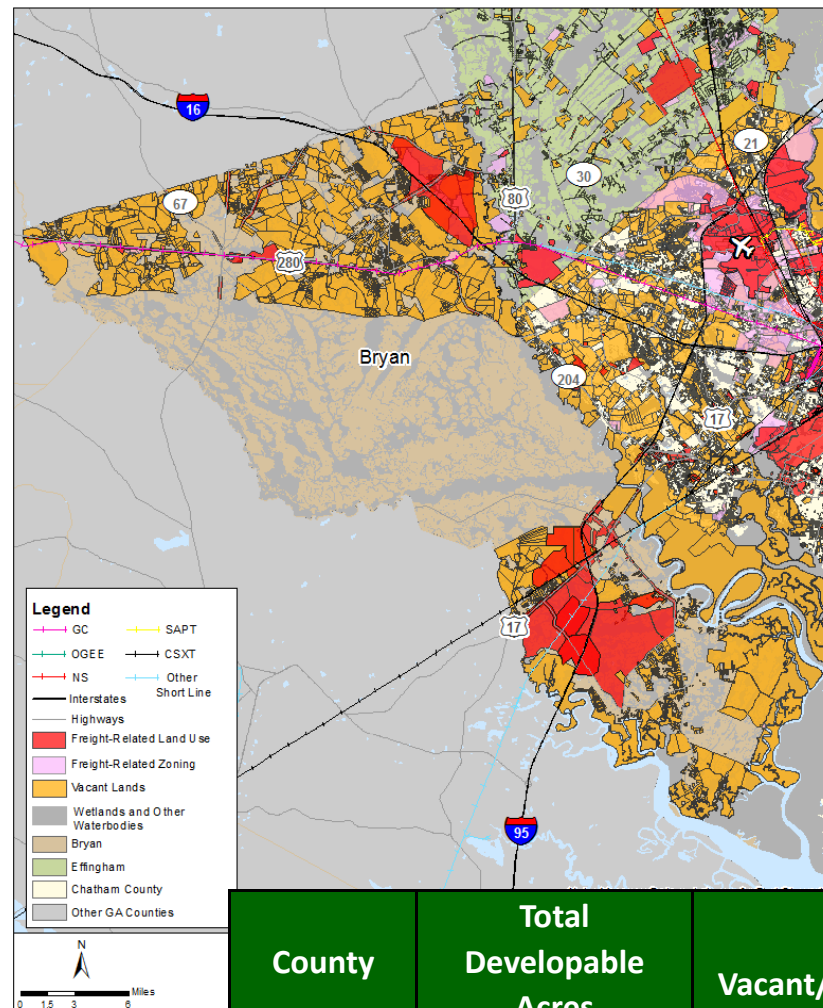
Vacant Lands



County	Total Developable Acres	Existing Vacant/Undeveloped Land	Percentage of Land Vacant/Undeveloped
Bryan	92,121	59,708	64.82%
Chatham	121,631	45,835	37.68%
Effingham	192,934	91,696	48.49%
Total	406,686	197,239	48.50%

Freight Possibilities – Bryan County

Vacant Lands

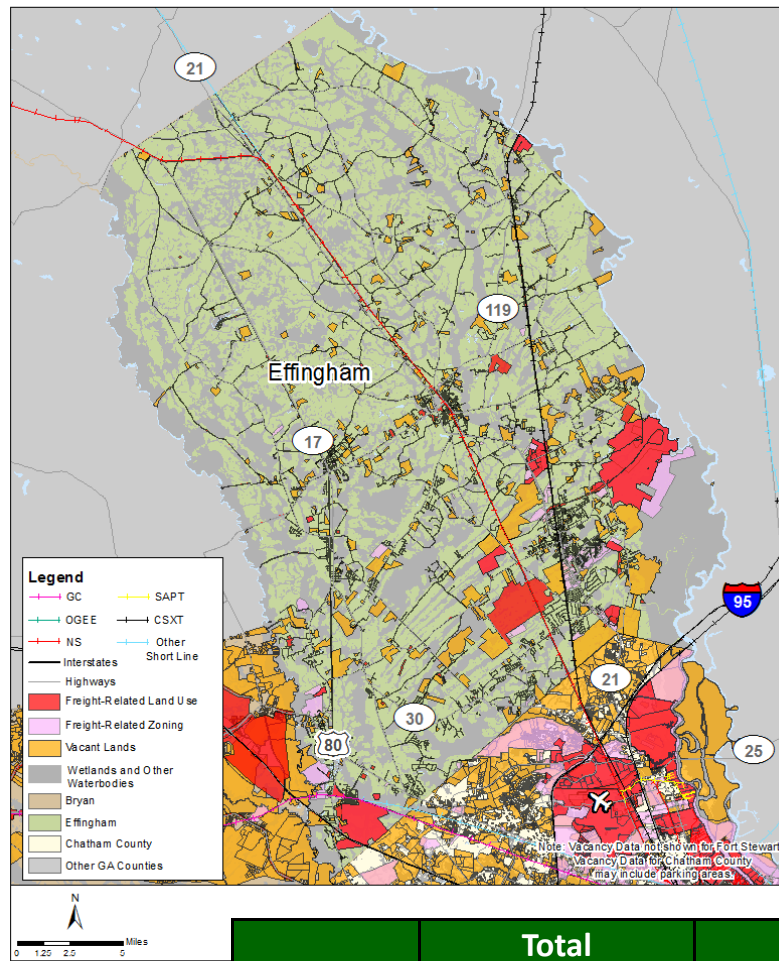


County	Total Developable Acres	Existing Vacant/Undeveloped Land	Percentage of Land Vacant/Undeveloped
Bryan	92,121	59,708	64.82%



Freight Possibilities – Effingham County

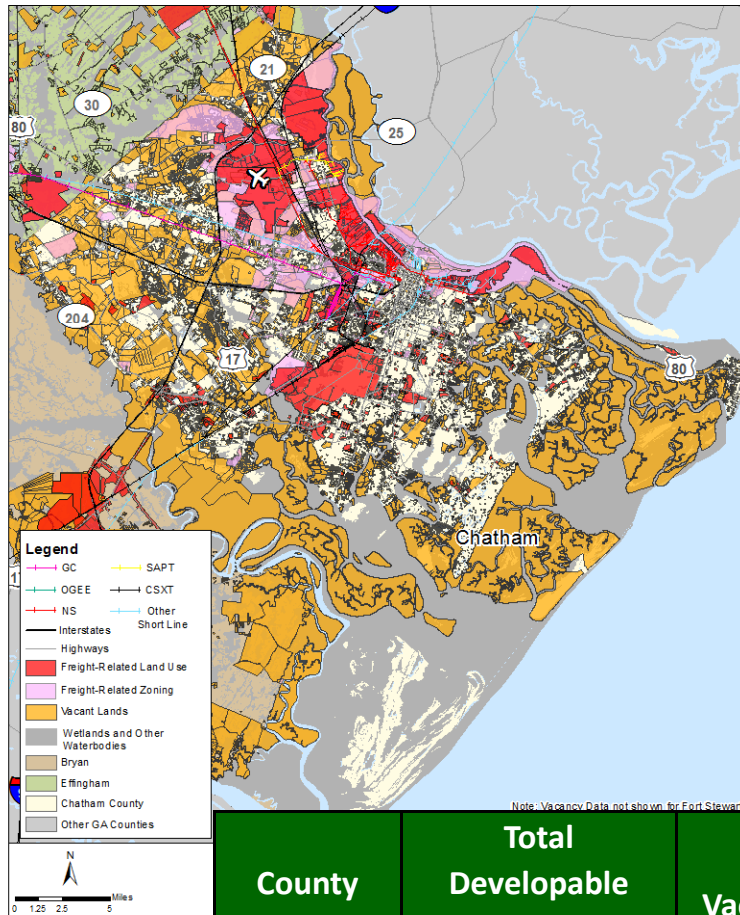
Vacant Lands



County	Total Developable Acres	Existing Vacant/Undeveloped Land	Percentage of Land Vacant/Undeveloped
Effingham	192,934	91,696	48.49%

Freight Possibilities – Chatham County

Vacant Lands



County	Total Developable Acres	Existing Vacant/Undeveloped Land	Percentage of Land Vacant/Undeveloped
Chatham	121,631	45,835	37.68%



Freight Related Land Use Recommendations

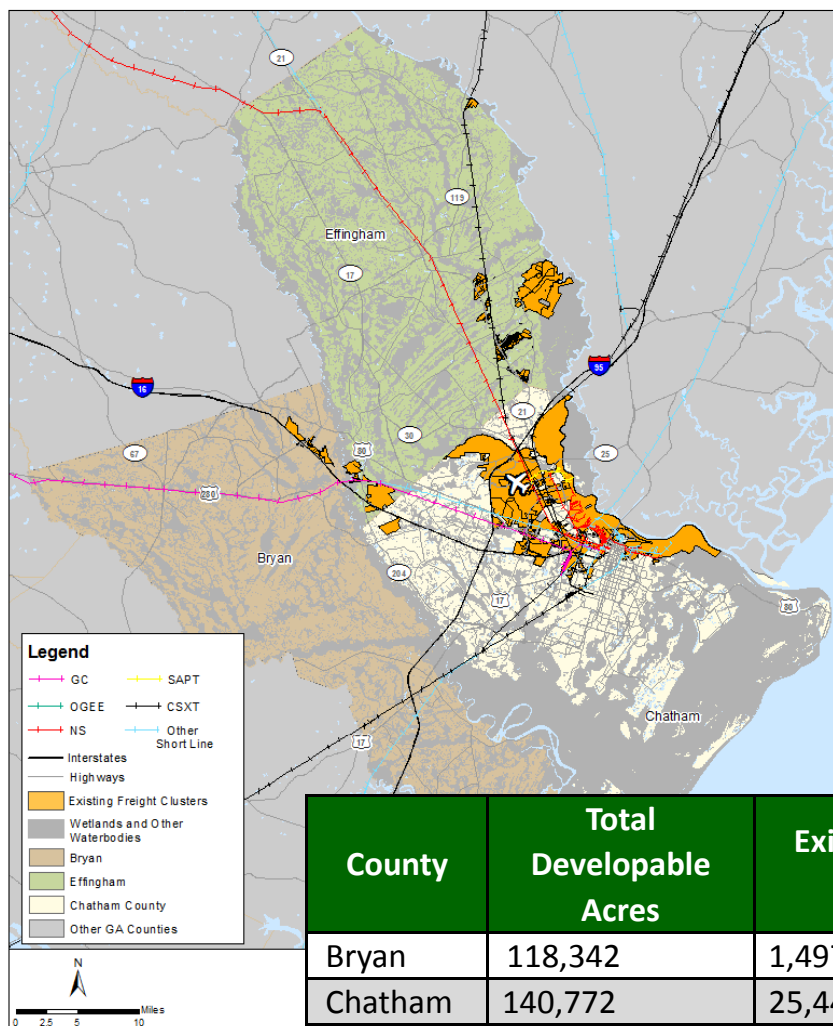
Freight Land Use Development Recommendations

- Prioritize the clustering of industrial development
 1. Infill within existing industrial clusters
 2. Greenfield development located adjacent to or in close proximity to freight transportation network
- Counties and Municipalities Zoning and Land Use Data should reflect future land use plans



Existing Freight Clusters

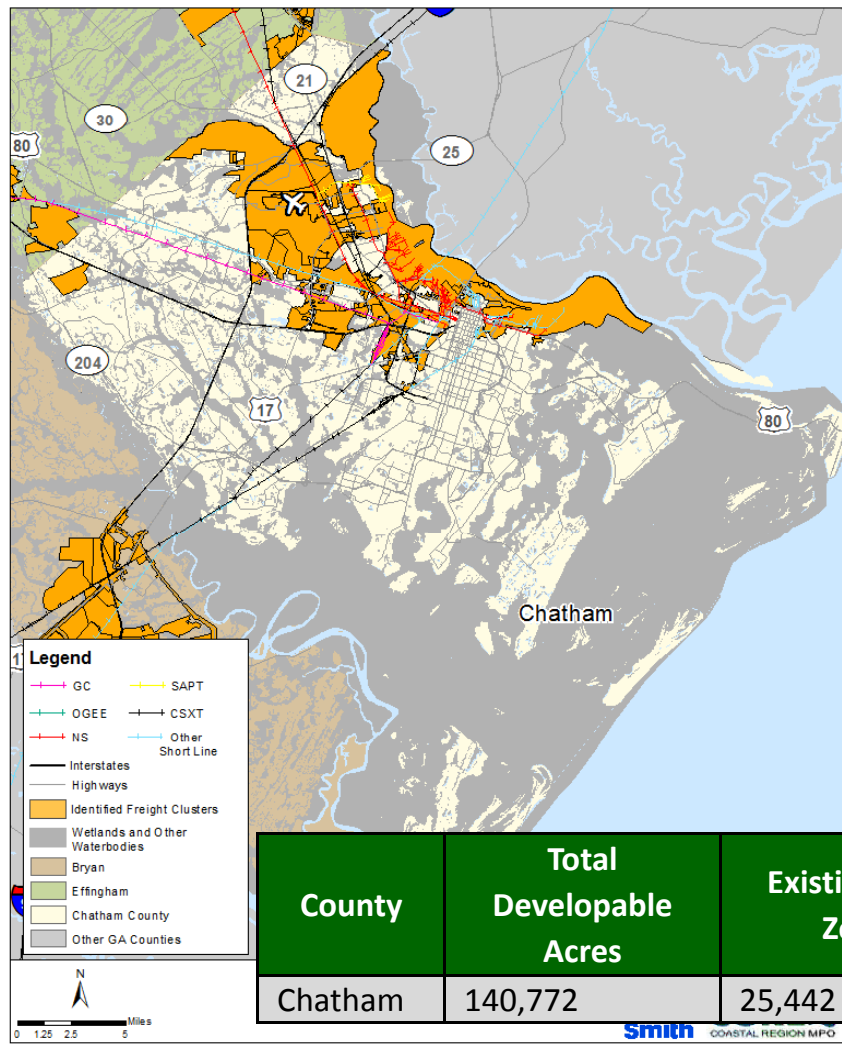
Existing Freight Clusters
CORE MPO Region



County	Total Developable Acres	Existing Freight-Related Zoning Acreage	Existing Freight Clusters Acreage
Bryan	118,342	1,497	19,658
Chatham	140,772	25,442	22,772
Effingham	189,121	7,686	9,901
Total	448,235	34,625	52,331

Existing Freight Clusters – Chatham County

Existing Freight Clusters
Chatham County



County	Total Developable Acres	Existing Freight-Related Zoning Acreage	Existing Freight Clusters Acreage
Chatham	140,772	25,442	22,772

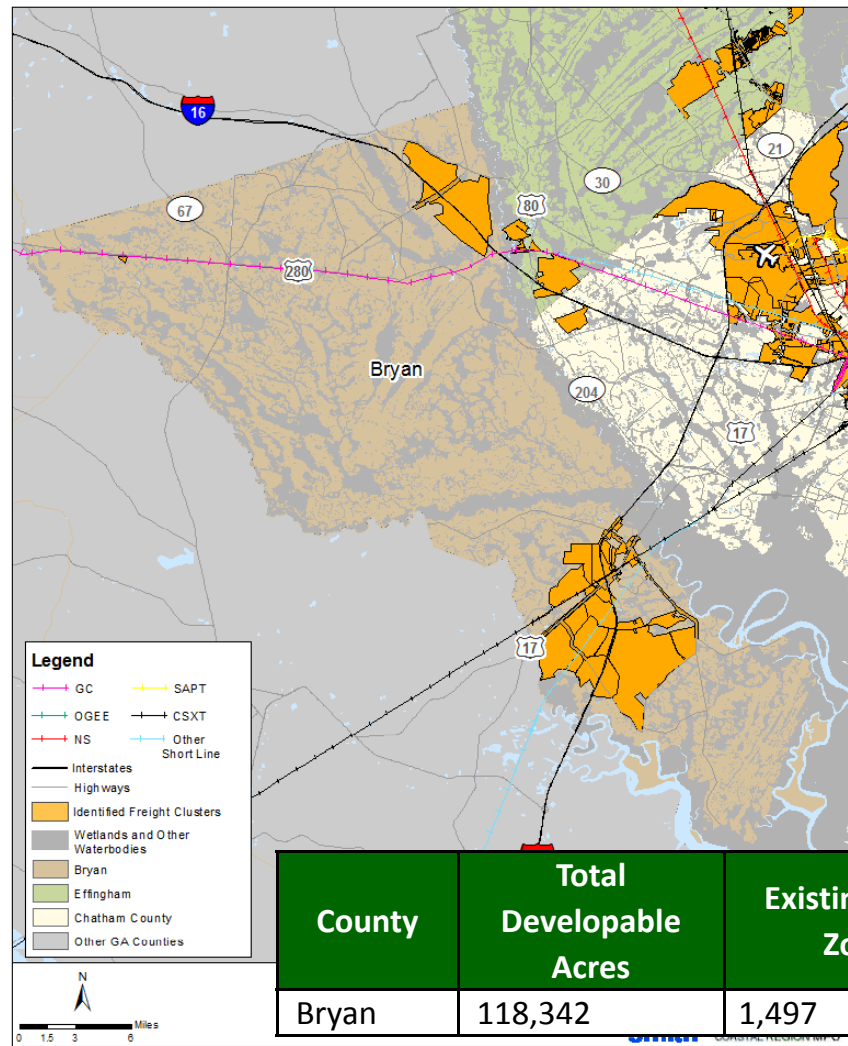
Chatham County Existing Industrial Locations

Location	City
Prologis Morgan Business Center	Bloomingtondale
Nettles Industrial Lot 6	Savannah
Westport Business Park	Garden City
Westside Boulevard Lot 37C & 37B	Pooler
Pine Barren Tract	Pooler
130 Crossgate Road	Savannah
Benton Tract	Pooler
Blakewood Ryals Estate Tract	Pooler
CenterPoint Intermodal Center	Garden City
Savannah Mega Site	Pooler
Northport Business Park	Savannah
Pooler Park of Commerce	Pooler
Jimmy DeLoach Industrial Land	Pooler
Mega-Site Business Park	Pooler
Brasseler Boulevard Lot E	Savannah
Compass Business Park	Bloomingtondale
289 Telfair Road	Savannah
114 Gignillat Circle	Savannah
6594 Highway 21	Port Wentworth
Crossgate Site	Port Wentworth
Crossroads Site 6M	Savannah
SeaPoint Industrial Terminal Complex	Savannah
Morgan Industrial Land	Pooler
SEDA Airport Site	Pooler
Tremont Intermodal Center II	Savannah



Existing Freight Clusters – Bryan County

Existing Freight Clusters
Bryan County



Bryan County Existing Freight Inventory



Former Hobart
Manufacturing Facility



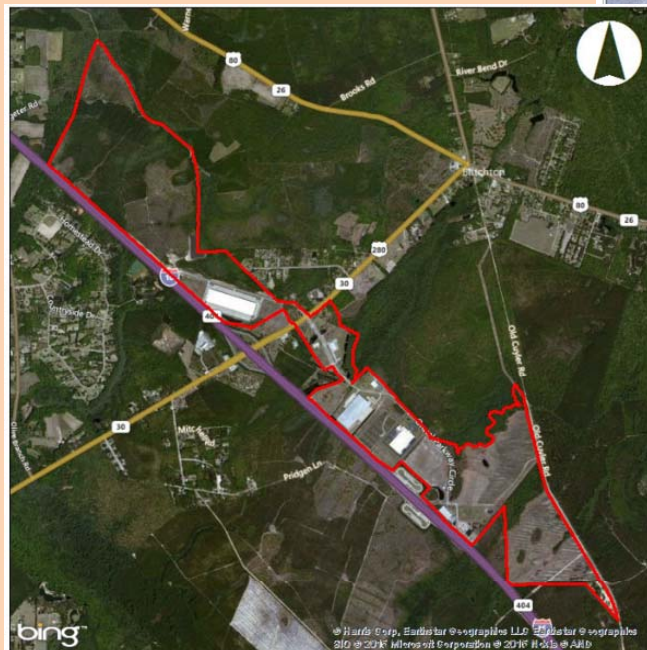
Interstate Centre II Building



Bryan County Freight Clusters



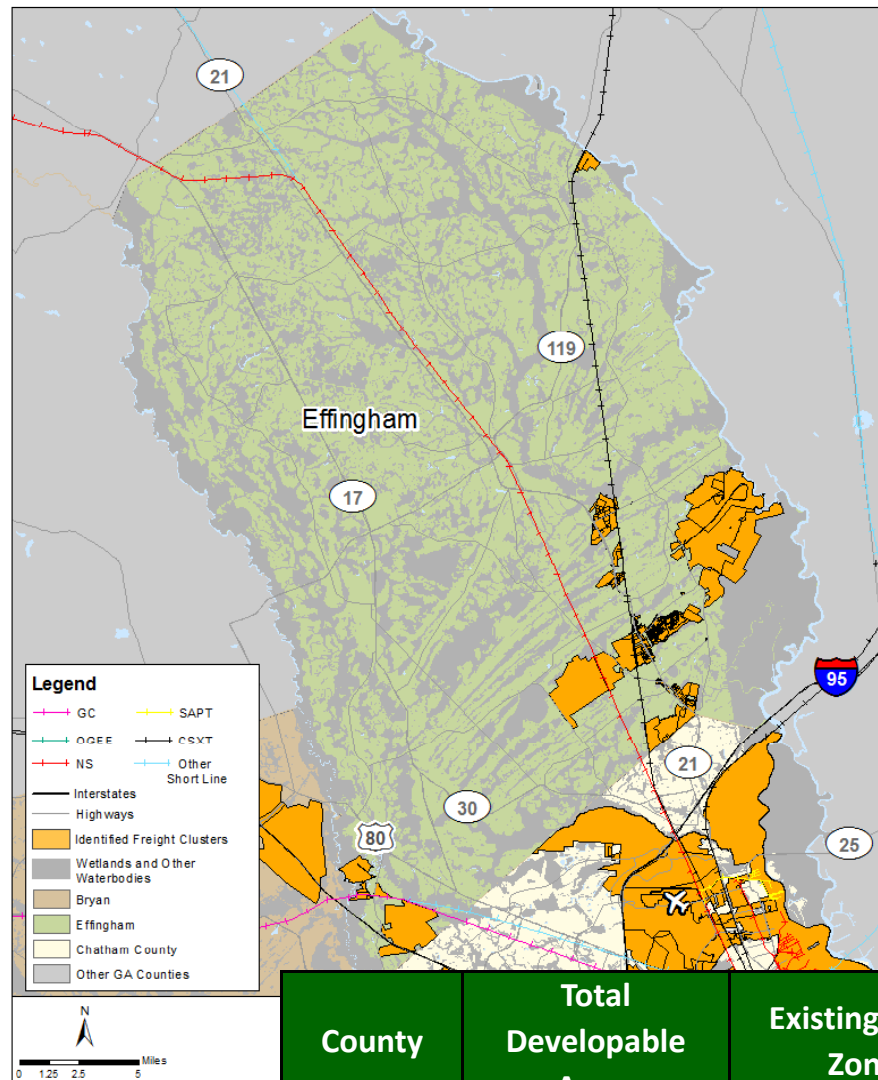
Belfast Commerce Centre



Interstate Centre

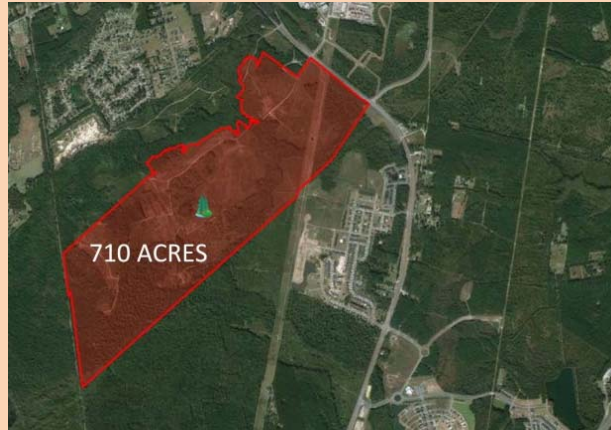
Existing Freight Clusters – Effingham County

Existing Freight Clusters
Effingham County



County	Total Developable Acres	Existing Freight-Related Zoning Acreage	Existing Freight Clusters Acreage
Effingham	189,121	7,686	9,901

Effingham County Freight Clusters



New Savannah Site

- 710 Acres
- Adjacent to GA 21
- Rail access

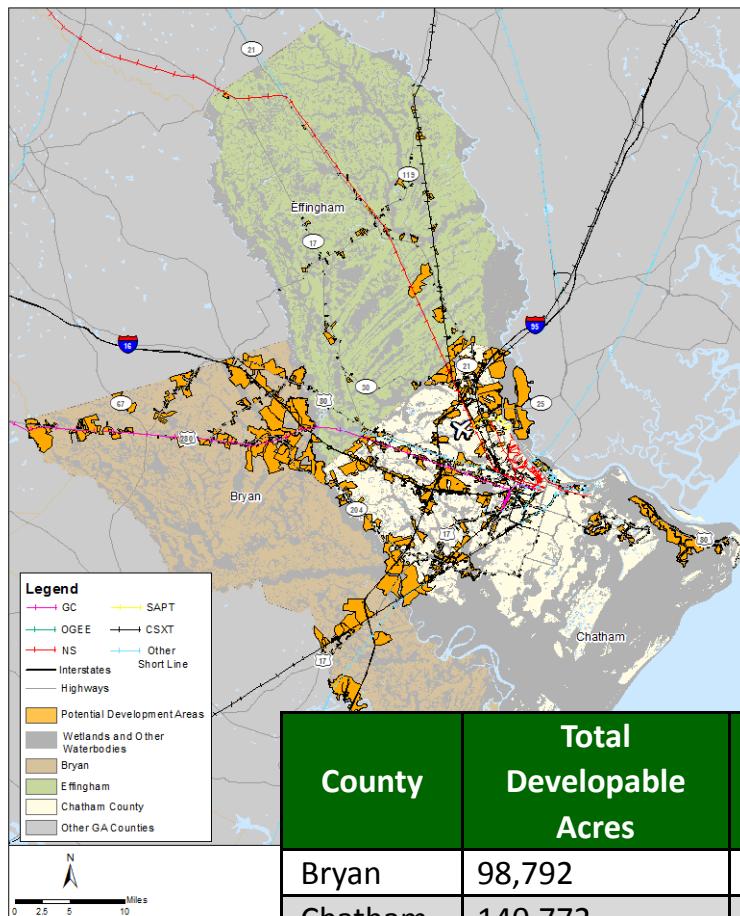


Interstate Centre II Building

- 2,577 Acres
- Dual Class I Rail Access

Potential Greenfield Development Areas

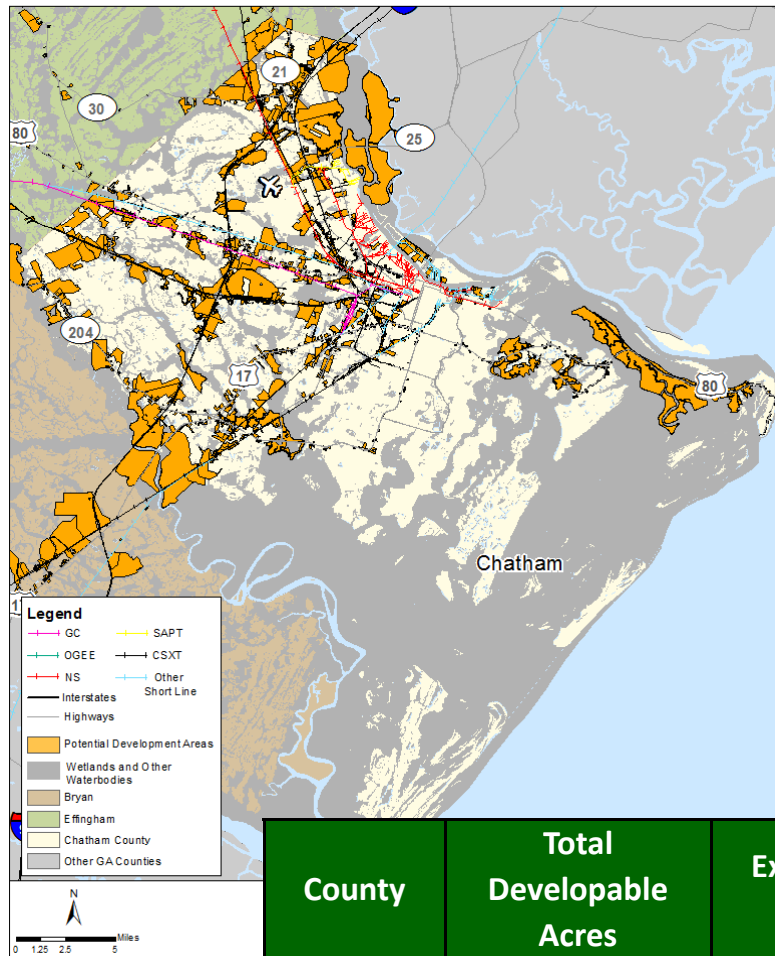
Potential Greenfield Development Areas
CORE MPO Freight Plan Study Area



County	Total Developable Acres	Existing Freight-Related Zoning Acreage	Existing Freight Clusters Acreage
Bryan	98,792	1,497	20,505
Chatham	140,772	25,442	16,215
Effingham	189,121	7,686	3,554
Total	428,685	34,625	40,274

Potential Greenfield Development Areas – Chatham County

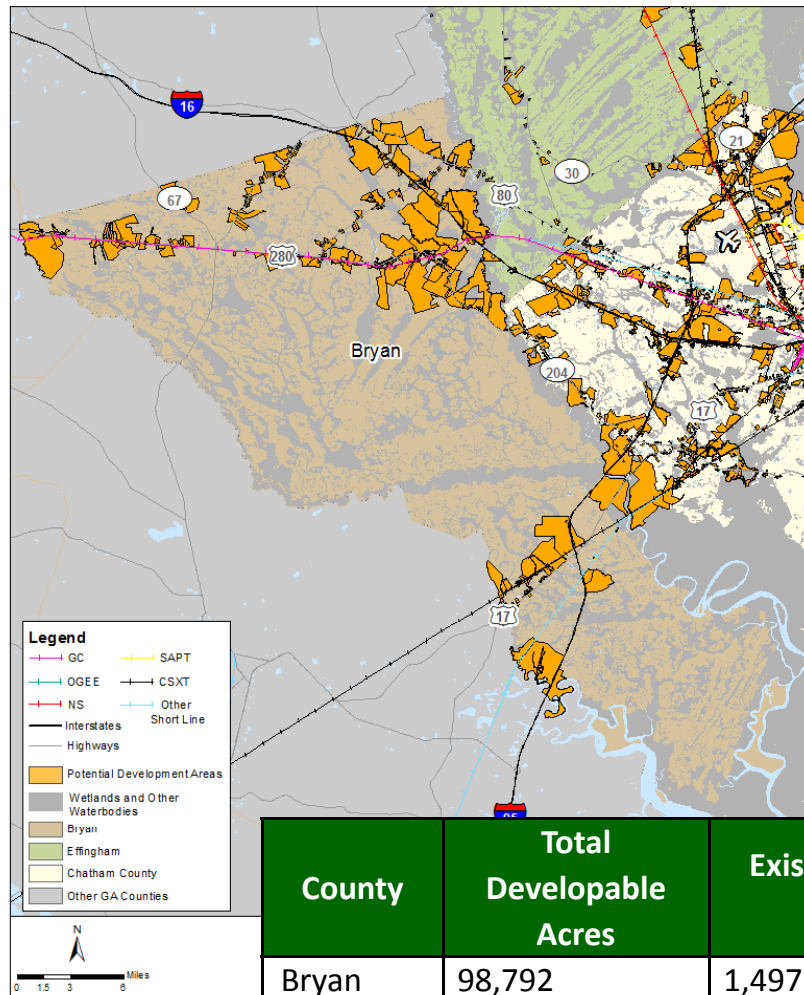
Potential Greenfield Development Areas
Chatham County



County	Total Developable Acres	Existing Freight-Related Zoning Acreage	Existing Freight Clusters Acreage
Chatham	140,772	25,442	16,215

Potential Greenfield Development Areas – Bryan County

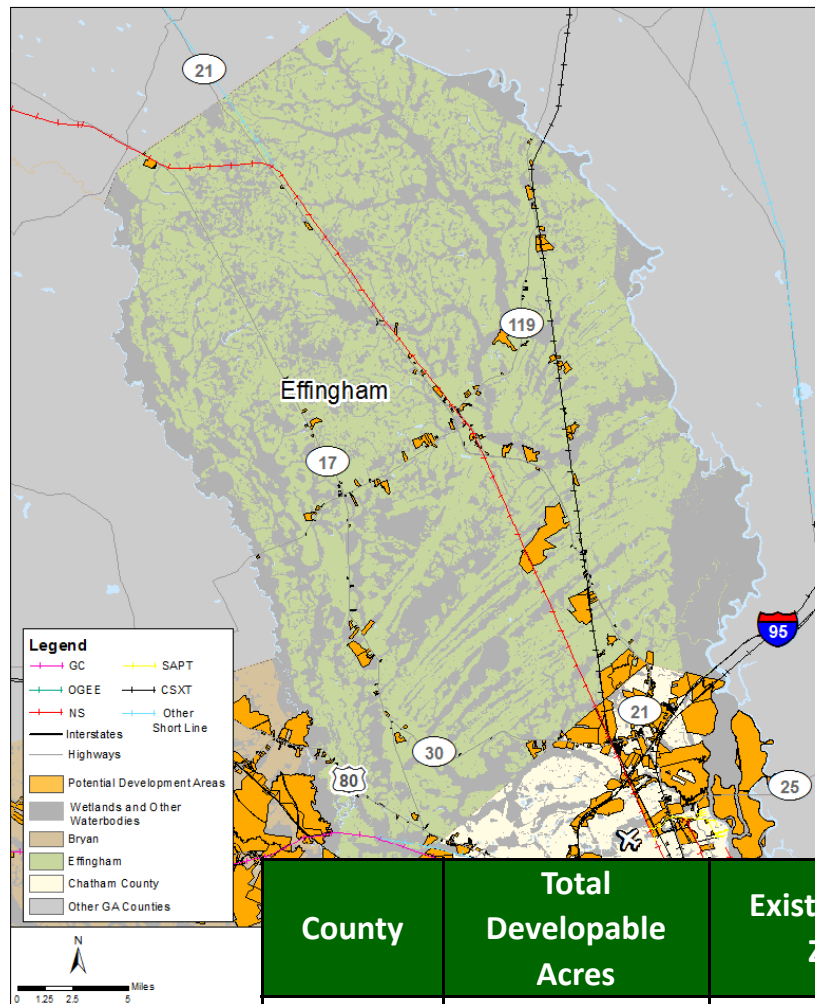
Potential Greenfield Development Areas
Bryan County



County	Total Developable Acres	Existing Freight-Related Zoning Acreage	Existing Freight Clusters Acreage
Bryan	98,792	1,497	20,505

Potential Greenfield Development Areas – Effingham County

Potential Greenfield Development Areas
Effingham County



County	Total Developable Acres	Existing Freight-Related Zoning Acreage	Existing Freight Clusters Acreage
Effingham	189,121	7,686	3,554

BREAK



Freight Recommendations



Freight Policy Recommendations



Freight Policy Recommendations

- Establish Truck Operational Hours along Bay Street (Downtown Savannah)
- Establish a Regional Freight Transportation Network
 - Grandfather State Freight Transportation Network
 - Add local freight roadways onto CORE MPO Regional Freight Network – Jimmy DeLoach Pkwy, Chatham Pkwy
- Develop an ITS/Traffic Messaging System for communication with trucks to utilize alternative routes on transportation network
- **Develop corridor signal timing on major truck routes – example GDOT Regional Traffic Operations Program (RTOP)**
- Develop a Wayfinding System between Port of Savannah and Interstate Corridors



Freight Infrastructure Recommendations



Short-term (2015-2020)

Project	Highway	Seaport	Airport	Rail
SR 21 from SR 30 to I-95; Including Interchange (Diverging Diamond Interchange) ²	X			
CR 787/Islands Expressway at Wilmington River/Bascule Bridge ²	X			
SR 21 Culvert Replacement at Pipemakers Canal ²	X			
SR 25 Culvert Replacement at Pipemakers Canal ²	X			
SR 25 Conn / Bay Street from I-516 to the Bay Street Viaduct (West Bay Street Widening) ²	X			
SR 26 from I-516 to CS 188/Victory Drive (US 80 / Ogeechee Rd Widening) ²	X			
CR 984/Jimmy DeLoach Pkwy @ SR 17 - Interchange (New Interchange at US 80) ²	X			
Jimmy DeLoach Parkway Extension from US 80 to I-16, including new interchange at US 80 ²	X			
Savannah Harbor Expansion Project (Deepening) ⁴		X		
Dean Forest Road from Telfair to I-16 interchange – improved traffic signalization and signage ¹	X			
Ogeechee Road (SR 25) at Chatham Parkway – intersection improvements ¹	X			
Dean Forest Road/ Bourne Road (SR 307) from Port Authority to I-16 – operations and safety enhancements ¹	X			
Wayfinding – US 280 at SR 67 – need truck route signage to I-16 ¹	X			

¹ List of Recommendations from the CORE MPO Regional Freight Plan

² Projects from the CORE MPO 2040 Total Mobility Plan

³ Draft Recommendation from the Georgia State Rail Plan that is currently being updated

⁴ Recommendations from the Georgia Statewide Freight and Logistics Plan, 2010-2050



Short-term (2015-2020)

Project	Highway	Seaport	Airport	Rail
Intersection Safety Beacon - SR 25 N Coastal Highway at Main Mill Entrance ¹	X			
Safety Improvements (On-street angled parking on truck route) – South of SR 25 at Crossgate intersection in Port Wentworth ¹	X			
Safety Improvements (On-street angled parking on truck route) – South of SR 25 at Aberfeldy Street intersection in Port Wentworth ¹	X			
Railroad Crossing At-grade Safety Improvements - North of SR 25 at Gibbons Road Georgia Port Authority entrance ¹	X			X
Railroad Crossing At-grade Safety Improvements - South of SR 25 at Gibbons Road Georgia Port Authority entrance ¹	X			X
Railroad Crossing At-grade Safety Improvements - SR 21 North of City on Rincon Tennis Complex and YMCA ¹	X			X
Railroad Crossing At-grade Safety Improvements - SR 21 Northwest of Brampton Road ¹	X			X
Railroad Crossing At-grade Safety Improvements - SR 119 Southwest of N Laurel Street at SR 119 E Madison Street intersection in Springfield ¹	X			X
Intersection Safety Beacon - SR 17 at SR 30 ¹	X			
Safety Improvements (On-street angled parking on truck route) – North of SR 17 at 2nd Avenue intersection in Guyton ¹	X			
Railroad Crossing At-grade Safety Improvements - SR 17 Northwest of M C Road intersection South of Oliver ¹	X			X
Railroad Crossing At-grade Safety Improvements - US 80 east of Gilbert Avenue ¹	X			X
Railroad Crossing At-grade Safety Improvements - US 80 east of Augusta Ave split ¹	X			X
Wayfinding – US 280 at Strickland in Pembroke – sign to I-16 through residential street (shortcut) need to add sign no trucks allowed ¹	X			

¹ List of Recommendations from the CORE MPO Regional Freight Plan

² Projects from the CORE MPO 2040 Total Mobility Plan

³ Draft Recommendation from the Georgia State Rail Plan that is currently being updated

⁴ Recommendations from the Georgia Statewide Freight and Logistics Plan, 2010-2050



Short-term (2015-2020)

Project	Highway	Seaport	Airport	Rail
US 80/Ogeechee Road widening from east of Lynes Parkway to east of the Springfield Canal and the US 80/Ogeechee Road Intersection with Victory Drive ⁵	X			
Jimmy DeLoach Parkway and US 80 Grade Separated Interchange ⁵	X			
Jimmy DeLoach Parkway Phase II – I-16 to Jimmy DeLoach Parkway ⁵	X			

¹ List of Recommendations from the CORE MPO Regional Freight Plan

² Projects from the CORE MPO 2040 Total Mobility Plan

³ Draft Recommendation from the Georgia State Rail Plan that is currently being updated

⁴ Recommendations from the Georgia Statewide Freight and Logistics Plan, 2010-2050

⁵GDOT PI



Mid-term (2021-2030)

Project	Highway	Seaport	Airport	Rail
I-516 @ CS/1503/DeRenne Avenue (DeRenne Blvd. Option) ²	X			
East DeRenne from SR 204 to Harry S Truman Parkway (East DeRenne Avenue Improvements) ²	X			
SR 21 from CS 346/Mildred Street to SR 204 (West DeRenne Avenue Improvements) ²	X			
SR 26/US 80 @ Bull River and @ Lazaretto Creek ²	X			
Brampton Road Connector from Foundation Drive to SR 21/SR 25/US 80 ²	X			
I-16 @ Montgomery Street and @ MLK Jr BLVD - Ramp and Overpass (I-16 Exit Ramp Removal) ²	X			
Build additional tracks for storage, double-tracking or re-configuring storage leads at Garden City Terminal ³				X
Increase Garden City Terminal Yard capacity, track lengths, or double tracking ³				X
I-16 at SR 307 – ramp improvements ¹	X			
SR 21 Corridor – Operations and Safety enhancements ¹	X			
US 80 Corridor – Operations and Safety enhancements ¹	X			
Ogeechee Road (SR 25) at Chatham Parkway – intersection improvements ¹	X			
Abercorn Street (SR 204) at King George Boulevard – intersection improvements ¹	X			
Intersection Operational Improvements – SR 25 at SR 30¹	X			
Intersection Operational Improvements – SR 25 at Brampton Road¹	X			

¹ List of Preliminary Recommendations from the CORE MPO Regional Freight Plan

² Projects from the CORE MPO 2040 Total Mobility Plan

³ Draft Recommendation from the Georgia State Rail Plan that is currently being updated

⁴ Recommendations from the Georgia Statewide Freight and Logistics Plan, 2010-2050



Mid-term (2021-2030)

Project	Highway	Seaport	Airport	Rail
Right Turn lane SR 25 at SR 21 ¹	X			
Intersection Operational Improvements – SR 119 N Laurel Street at SR 119 E Madison Street ¹	X			
Intersection Operational Improvements – SR 119 at SR 17 ¹	X			
Intersection Operational Improvements – SR 30 at SR 21 ¹	X			
Interchange improvements – US 80 at I-95 ¹	X			
Intersection Operational Improvements – US 80 at SR 307 ¹	X			
Intersection Operational Improvements – US 80 at 8th Street/Alfred Street ¹	X			
Intersection Operational Improvements – US 80 at West Lathrop Avenue ¹	X			
Interchange Improvements – widen southbound interchange on-ramp ¹	X			
Add right hand turn lane westbound Jimmy DeLoach Pkwy at Expansion Blvd, Logistics Way, Port Logistics Center Crossroads, and Port City entrance ¹	X			
I-16 Widening – I-95 to I-516 ¹				
US 80/Ogeechee Road from just east of Lynes Parkway to just east of the Springfield Canal and the SR 26/US 80/Ogeechee Road Intersection with Victory Drive				

¹ List of Preliminary Recommendations from the CORE MPO Regional Freight Plan

² Projects from the CORE MPO 2040 Total Mobility Plan

³ Draft Recommendation from the Georgia State Rail Plan that is currently being updated

⁴ Recommendations from the Georgia Statewide Freight and Logistics Plan, 2010-2050



Long-term (2031-2040)

Project	Highway	Seaport	Airport	Rail
I-95 at SR 21 / Augusta Rd Interchange Reconstruction ²	X			
US 80 / Victory Drive Improvements / Congestion Mitigation ²	X			
President Street / Truman Parkway Interchange Bridge and Ramp Reconstruction ²	X			
I-516 / Lynes Parkway Widening from Veterans Parkway to Mildred Street ²	X			
I-516 / Lynes Parkway at I-16 Interchange Reconstruction ²	X			
I-16 at I-95 Interchange Reconstruction ²	X			
Grade separated rail crossings along SR 21 ¹	X			X
Construct more grade-separated crossings ³	X			X
I-16 at Chatham Parkway – Interchange improvements ¹	X			
I-95 at SR 21 – interchange improvements ⁴	X			
Effingham Parkway	X			
SR 25/US 17 Bridge Replacement at Savannah River²	X			
SR 25/US 17 Bridge Replacement at Middle River²	X			

¹ List of Preliminary Recommendations from the CORE MPO Regional Freight Plan

² Projects from the CORE MPO 2040 Total Mobility Plan

³ Draft Recommendation from the Georgia State Rail Plan that is currently being updated

⁴ Recommendations from the Georgia Statewide Freight and Logistics Plan, 2010-2050





How can Freight Projects be Funded?

Freight Project Funding

- Consistent with Federal, State and Local Planning
 - Communicate and coordinate with state and local agencies
 - Align goals and objectives
- Opportunity to increase federal share (MAP-21)
- Recommendations and guidance for actions, policies and investments
- Incorporation of freight criteria into the project prioritization process
 - Prioritize needs that provide the greatest impact to freight mobility.



The Fixing America's Surface Transportation Act "FAST"

- Largely maintains current program structures and funding shares between highways and transit.
- Increases overall transportation funding by 11 percent over five years
- Establishes both formula and discretionary grant programs to fund projects that would benefit freight movements.
- Will provide a dedicated source of Federal funding for freight projects, including multimodal projects.
- Emphasizes the importance of Federal coordination to focus local governments on the needs of freight transportation providers



FAST Continued

- 90% of funds in a new freight program have to be used for highway projects...up to 10% for other modes (ports, railroads, intelligent transportation systems, or better demand management).
- A new combination of a formula and separate discretionary grant program is the first time Congress has funded a freight program in the transportation bill
- Creates a discretionary grant program with \$800 million this year, rising to \$1 billion in 2020, and creates a new formula program with \$1.15 billion in the first year rising to \$1.5 billion in 2020.
- Requires states and metro areas to analyze their freight movement and develop a multimodal plan.
- The new formula program relies on current highway formulas unrelated to freight movement...removing the consideration of freight (tonnage, value, etc.).



Federal Grant and Loan Programs

- TIGER Discretionary Grants
- Congestion Mitigation and Air Quality (CMAQ) program
- Federal Rail Safety Improvement Act of 2008
- Rail Line Relocation and Improvement Capital Grant Program
- Transportation Infrastructure Finance and Innovation Act (TIFIA)
- The Railroad Rehabilitation and Improvement Financing Program
- Section 45G Track Rehabilitation Tax Credit
- Airport Improvement Program (AIP)
- Department of Commerce (DOC): Public Works, Economic Adjustment, Partnership Planning, Trade Adjustment Assistance for Firms, University Centers, Research and National Technical Assistance, Local Technical Assistance



What's Next

- Complete maps, analysis, tech memos and reports

<http://www.thempc.org/Transportation/FreightTransportationPlans.html>

- Using EDFAC to continue CORE MPO's freight planning efforts
 - Bylaws
 - Future Meeting Times and Location



Thank You!

Freight Study Website

<http://www.thempc.org/Transportation/FreightTransportationPlans.html>