

**Resolution to Revise the FY 2015 – 2018 Transportation Improvement Program of
the Coastal Region Metropolitan Planning Organization (CORE MPO)**

WHEREAS, the Coastal Region Metropolitan Planning Organization (CORE MPO) desires to adopt revisions to the FY 2015 - 2018 Transportation Improvement Program (TIP) for the CORE MPO transportation planning area; and

WHEREAS, the proposed revisions include the following:

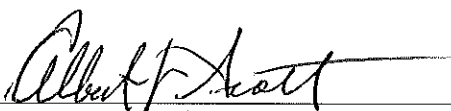
- PI# 0002923, SR 25 CONN/BAY STREET FROM I-516 TO THE BAY STREET VIADUCT – increase the cost estimates for both utility and construction phases in FY 2016; and
- PI# 0007128, CR 787/ISLANDS EXPRESSWAY @ WILMINGTON RIVER/BASCULE BRIDGE – move the right-of-way phase from FY 2015 to FY 2016; and
- PI# 0010553, CS 651/CROSSGATE RD FM SR 21 TO NS#734150L IN PORT WENTWORTH - move the construction phase from FY 2015 to FY 2016; and
- PI# 521855, SR 26 FROM I-516 TO CS 188/VICTORY DRIVE - move the preliminary engineering phase for GODT oversight from FY 2015 to FY 2016; and
- PI# 0010563, SAVANNAH MPO STRATEGIC PLANNING STUDY - SECTOR ELEVEN - move the planning phase from FY 2015 to FY 2016; and
- PI# 0011744, I-16 @ MONTGOMERY ST & @ MLK JR BLVD - RAMP & OVERPASS – reduce the cost estimate for the scoping phase in FY 2017; and
- PI# 0013277, CAT VEHICLE PURCHASE FOR 2015 – move the construction phase from FY 2015 to FY 2016; and
- PI# 0013273, CAT BIKESHARE EXPANSION IN DOWNTOWN SAVANNAH – move all of the programmed phases (GDOT oversight, capital and construction) from FY 2015 to FY 2016; and
- PI# 0013271, MARSH HEN TRAIL FM E OF OLD HWY 80 TO BATTERY DR - PHASE II – move GDOT oversight and the construction phase from FY 2015 to FY 2016 and FY 2018 respectively; and
- PI# 0013272, CANEBRAKE ROAD IMPROVEMENT PROJECT FROM GATEWAY BLVD. TO BASIN ROAD – delete the project from the TIP; and
- Transit – revise the Sections 5307, 5337, 5339 and Section 5307 Ferry Boat Discretionary programs with updated funding and programming information.

WHEREAS, CORE MPO has completed a 15-day public review and comment period for the TIP revisions according to the Participation Plan; and

WHEREAS, CORE MPO would like to complete the TIP revision process to incorporate the project programming and funding changes.

NOW, THEREFORE, BE IT RESOLVED THAT, the Coastal Region Metropolitan Planning Organization approves the proposed revisions to the FY 2015 - 2018 Transportation Improvement Program as shown in the summary of TIP revision report with any corrections based upon the motion of June 24, 2015.

Approved this day, June 24, 2015



Albert J. Scott, Chairman
Coastal Region Metropolitan Planning Organization

Revisions to FY 2015-2018 Transportation Improvement Program of the Coastal Region Metropolitan Planning Organization (CORE MPO)

June 2015

The Transportation Improvement Program (TIP) is the MPO's short-range programming document and is a staged, multi-year listing of surface transportation projects proposed for federal, state and local funding within the metropolitan area. The TIP may be modified in accordance with the procedures outlined in the adopted Participation Plan by resolution of the CORE MPO Board if priorities, area goals, project schedules or funding levels change. The CORE MPO's FY 2015 - 2018 TIP was adopted by the MPO Board in August 2014. Several administrative modifications and TIP amendments have been processed for various projects.

The CORE MPO normally starts the new TIP development process in early March and adopts a new TIP by the end of the state fiscal year (June 30). After its adoption, the new TIP replaces the old one as the guiding programming document. However, because of the funding uncertainties related to MAP-21, development and adoption of a new TIP by June 30, 2015 is highly impossible. Thus the current FY 2015 – 2018 TIP remains the CORE MPO's guiding programming document.

It is important to make sure that the information contained in this document is current and reflective of the most up-to-date cost estimates and development schedules. The timing is particularly important for those projects/phases programmed in fiscal year 2015. If a project/phase is being developed on schedule and the programmed funds in 2015 are expected to be authorized before June 30, no updates are necessary; otherwise administrative modifications or TIP amendments are needed to reflect the current project development status. It is also important to amend the TIP to add new or delete existing projects/phases at the request of sponsoring agencies based on the project change and MTP/TIP consistency.

It should be noted that the Transportation Improvement Program must be consistent with the current Metropolitan Transportation Plan (MTP). Before revisions can be made to the FY 2015 - 2018 TIP, MTP/TIP consistency must be checked. As required by the Federal Highway Administration (FHWA), an addendum to the current 2040 MTP has been developed to document the consistency check as a part of the June 2015 TIP revisions.

It should also be noted that the TIP financial plan must be balanced, meaning the project costs must be less than or equal to projected revenues. For state and federally funded projects not using M230 urban attributable funds, the GDOT Office of Financial Management (OFM) makes a determination of fiscal constraint prior to authorizing funds. For M230 funded projects, the CORE MPO staff determines fiscal constraint before submitting the revisions to CORE MPO Board for action. The Chatham Area Transit Authority (CAT) re-calculates the financial balance for each updated transit program to ensure fiscal feasibility as well. It has been determined that the proposed TIP revisions will not negatively impact the annual fiscal balance.

Project Status

The CORE MPO staff has coordinated with various project managers/sponsors and found out that updates need to be made to several projects, programs, and phases.

According to the adopted Participation Plan of the CORE MPO, shifting projects within the 4-year TIP is considered an administrative modification if the subsequent annual draft TIP can be submitted prior to September 30. However, if shifting a project might impact the funding balance of the TIP which requires re-demonstration of fiscal constraint for each fiscal year, these changes need to be processed as TIP amendments. In addition, if roadway project phases may have a cost increase less than \$2,000,000 or 20% of the amount to be authorized, the change will be considered an administrative modification, otherwise the change requires a TIP amendment. Addition or deletion of a project or a project phase is considered a TIP amendment as well.

The tables below list the projects/phases programmed in the FY 2015 – 2018 TIP, their development status, and the actions needed in June 2015 to accommodate the project revisions (if any).

Highway Projects

PI #	DESCRIPTION	Updates	Planning Action in June 2015
0002923	SR 25 CONN/BAY STREET FROM I-516 TO THE BAY STREET VIADUCT	PE for GDOT oversight programmed in FY 2015 - funds have been authorized.	No Action
		UTL programmed in FY 2016 – Chatham County requested additional funds (less than \$2 million).	TIP Administrative Modification
		CST programmed in FY 2016 – cost increase by more than \$2 million according to GDOT.	TIP Amendment
0007128	CR 787/ISLANDS EXPRESSWAY @ WILMINGTON RIVER/BASCULE BRIDGE	ROW programmed in FY 2015 – to be moved to FY 2016	TIP Administrative Modification
0007259	CR 984/JIMMY DELOACH PARKWAY @ SR 17 - INTERCHANGE	ROW programmed in FY 2015 - funds have been authorized.	No Action
		UTL programmed in FY 2018	No Action
		CST programmed in FY 2018	No Action
522790	JIMMY DELOACH PARKWAY EXTENSION FM I-16 TO SR 26/US 80	UTL programmed in FY 2018	No Action
		CST programmed in FY 2018	No Action
0013281	SR 21 Culvert Replacement at Pipemakers Canal	PE programmed in FY 2016	No Action
		ROW programmed in FY 2018	No Action
0013282	SR 25 Culvert Replacement at Pipemakers Canal	PE programmed in FY 2016	No Action
		ROW programmed in FY 2018	No Action
0006328	BRAMPTON ROAD CONNECTOR FM FOUNDATION DR TO SR 21/SR25/US80	ROW programmed in FY 2016	No Action
0006700	EFFINGHAM PKWY FROM SR 119/EFFINGHAM TO SR 30/CHATHAM	ROW programmed in FY 2017	No Action
0007402	CS 1504/GWINNETT ST FM STILES AVE TO I-16	ROW programmed in FY 2017	No Action
0008358	I-516 @ CS 1503/DERENNE AVE	PE programmed in FY 2016	No Action
		ROW programmed in FY 2018	No Action
0008359	EAST DERENNE FROM SR 204 TO HARRY S TRUMAN PKWY	PE programmed in FY 2016	No Action
		ROW programmed in FY 2017	No Action

0010236	SR 21 FROM CS 346/MILDRED STREET TO SR 204	PE programmed in FY 2016	No Action
		ROW programmed in FY 2017	No Action
0007885	CS 602/CS 650/GRANGE ROAD FROM SR 21 TO E OF SR 25	TIP amendment made in May 2015 for June letting.	No Action
0010553	CS 651/CROSSGATE RD FM SR 21 TO NS#734150L IN PORT WENTWORTH	CST programmed in FY 2015 – to be moved to FY 2016	TIP Administrative Modification
0010560	SR 26/US 80 @ BULL RIVER & @ LAZARETTO CREEK	PE programmed in FY 2017	No Action
0012722	SR 21 FROM SR 30 TO I-95; INC INTERCHANGE	Project was already let.	No Action
0012758	I-16 @ I-95 - INTERCHANGE RECONSTRUCTION	PE programmed in FY 2015 – funds have been authorized.	No Action
		PE programmed in FY 2017	No Action
521855	SR 26 FROM I-516 TO CS 188/VICTORY DRIVE	PE for GDOT oversight programmed in FY 2015 - to be moved to FY 2016	TIP Administrative Modification
		ROW programmed in FY 2017	No Action
0010915	OVERSIGHT SERVICES FOR M230 & CMAQ FUNDED TIP PROJ - FY 2015	PE programmed in FY 2015 – funds have been authorized.	No Action
0010916	OVERSIGHT SERVICES FOR M230 & CMAQ FUNDED TIP PROJ - FY 2016	PE programmed in FY 2016	No Action
0010917	OVERSIGHT SERVICES FOR M230 & CMAQ FUNDED TIP PROJ - FY 2017	PE programmed in FY 2017	No Action
0010563	SAVANNAH MPO STRATEGIC PLANNING STUDY – SECTOR ELEVEN	PE/planning programmed in FY 2015 - to be moved to FY 2016	TIP Administrative Modification
0011742	SAVANNAH MPO STRATEGIC PLANNING STUDY – SECTOR TWELVE	PE programmed in FY 2016	No Action
TBA	SAVANNAH MPO STRATEGIC PLANNING STUDY – SECTOR THIRTEEN	PE programmed in FY 2017	No Action
TBA	SAVANNAH MPO STRATEGIC PLANNING STUDY – SECTOR FOURTEEN	PE programmed in FY 2018	No Action
0011744	I-16 @ MONTGOMERY ST & @ MLK JR BLVD - RAMP & OVERPASS	Scoping programmed in FY 2017 – reduce programmed amount to fund the utility phase of PI# 0002923 (less than \$2 million).	TIP Administrative Modification
0013366	CAT SPECIAL TRANSPORTATION STUDY	PE programmed in FY 2015 – funds will be authorized by June 30.	No Action
0013277	CAT VEHICLE PURCHASE FOR 2015	CST programmed in FY 2015 – to be moved to FY 2016	TIP Administrative Modification
0013278	CAT VEHICLE PURCHASE FOR 2016	CST programmed in FY 2016	No Action
0013279	CAT VEHICLE PURCHASE FOR 2017	CST programmed in FY 2017	No Action
0013280	CAT VEHICLE PURCHASE FOR 2018	CST programmed in FY 2018	No Action

0013273	CAT BIKESHARE EXPANSION IN DOWNTOWN SAVANNAH	GDOT oversight programmed in FY 2015 - to be moved to FY 2016. Funds to be flexed to transit.	TIP Administrative Modification
		Capital programmed in FY 2015 - to be moved to FY 2016. Funds to be flexed to transit.	TIP Administrative Modification
		CST programmed in FY 2015 - to be moved to FY 2016. Funds to be flexed to transit.	TIP Administrative Modification
0007631	TRUMAN LINEAR PARK TRAIL - PHASE II PART A	CST programmed in FY 2017	No Action
TBA	TRUMAN LINEAR PARK TRAIL - PHASE II PART B	CST programmed in FY 2017	No Action
0010028	CS 1097/DELESSEPS/LA ROCHE AVE FM WATERS AVE TO SKIDAWAY RD	PE programmed in FY 2015 – funds have been authorized.	No Action
		ROW programmed in FY 2016	No Action
0013271	MARSH HEN TRAIL FM E OF OLD HWY 80 TO BATTERY DR - PHASE II	GDOT oversight programmed in FY 2015 – to be moved to FY 2016	TIP Administrative Modification
		CST programmed in FY 2015 - to be moved to FY 2018, and to correct cost estimate	TIP Administrative Modification
0013272	CANEBRAKE ROAD IMPROVEMENT PROJECT FROM GATEWAY BLVD. TO BASIN RD.	GDOT oversight programmed in FY 2015	Chatham County is implementing the project with local SPLOST funds. TIP Amendment to delete project and phases from TIP.
		PE programmed in FY 2015	
		ROW programmed in FY 2016	
		UTL programmed in FY 2017	
		CST programmed in FY 2017	

Transit Projects

PI #	DESCRIPTION	Updates	Planning Action in June 2015
Section 5307	Capital Schedule for CAT	Update the Section 5307 program by increasing FY 2016 funding to include unobligated FY 2015 amounts and update programmed projects	TIP Revision
Section 5337	State of Good Repair for CAT	Update the Section 5337 program in FY 2015 and FY 2016 based on current needs and available funding	TIP Revision
Section 5339	Bus and Bus Facility Schedule for CAT	Update the Section 5339 program in FY 2015 and FY 2016 based on current needs and available funding	TIP Revision
Discretionary Section 5307 FTA-FBD	Ferry Landing Renovation	Update the funding in FY 2015 and FY 2016 based on current needs and available funding	TIP Revision

Administrative Modifications

According to the Participation Plan, the administrative modification process consists of a monthly list of notifications from GDOT to all involved parties, with change summaries sent on a monthly basis to the

Federal Highway Administration (FHWA) and the Federal Transit Administration (FTA) by GDOT. The table below shows the TIP administrative modifications for June 2015.

PI #	DESCRIPTION	Funds	Phase/Current Year	Current Cost	Phase/Revised Year	Revised Cost
0002923	SR 25 CONN/BAY STREET FROM I-516 TO THE BAY STREET VIADUCT	M230	UTL / FY 2016	\$717,876	UTL / FY 2016	\$1,076,325
0007128	CR 787/ISLANDS EXPRESSWAY @ WILMINGTON RIVER/BASCULE BRIDGE	Local	ROW / FY 2015	\$119,917	ROW / FY 2016	\$119,917
0010553	CS 651/CROSSGATE RD FM SR 21 TO NS#734150L IN PORT WENTWORTH	M240	CST / FY 2015	\$1,273,450	CST / FY 2016	\$1,273,450
521855	SR 26 FROM I-516 TO CS 188/VICTORY DRIVE	M001	PE / FY 2015	\$500,000	PE / FY 2016	\$500,000
0010563	SAVANNAH MPO STRATEGIC PLANNING STUDY – SECTOR ELEVEN	M230	PE/planning / FY 2015	\$159,621	PE/planning / FY 2016	\$159,621
0011744	I-16 @ MONTGOMERY ST & @ MLK JR BLVD - RAMP & OVERPASS	M230	Scoping / FY 2017	\$1,100,000	Scoping / FY 2017	\$741,551
0013277	CAT VEHICLE PURCHASE FOR 2015	M230	CST / FY 2015	\$700,000	CST / FY 2016	\$700,000
0013273	CAT BIKESHARE EXPANSION IN DOWNTOWN SAVANNAH	M301	GDOT oversight / FY 2015	\$7,000	GDOT oversight / FY 2016	\$7,000
		M301	Capital / FY 2015	\$208,900	Capital / FY 2016	\$208,900
		M301	CST / FY 2015	\$9,910	CST / FY 2016	\$9,910
0013271	MARSH HEN TRAIL FM E OF OLD HWY 80 TO BATTERY DR - PHASE II	M301	GDOT oversight / FY 2015	\$7,000	GDOT oversight / FY 2016	\$7,000
		M301	CST / FY 2015	\$168,453	CST / FY 2018	\$161,453

Amendments

The adopted TIP/STIP amendment process outlined in the CORE MPO's Participation Plan requires public review and comment and responses to all comments (either individually or in summary form) for all TIP amendments. In order to process the proposed revisions in June 2015, CORE MPO advertised a fifteen (15) day public comment period in the Savannah Morning News on Sunday, June 7. The notice has been sent to the local news media and the consultation agencies as well as neighborhood associations, and posted on the CORE MPO website. The comment period started on June 9, 2015 and closed on June 23, 2015. Two public hearings have also been advertised and held – one is in conjunction with the Citizens Advisory Committee meeting on June 18, and the other in conjunction with the CORE MPO Board meeting on June 24. CORE MPO received some comments from the Savannah Tree Foundation regarding tree protection and preservation related to several highway projects. The MPO has forwarded these comments to the various project sponsors and managers and is coordinating with these agencies to provide responses. The comments are included at the end of this report.

Several amendments to the FY 2015 - 2018 TIP were proposed for the June 2015 CORE MPO meetings. The following summarizes the June 2015 TIP amendments to the highway section.

Bay Street Improvements from I-516 to Bay Street Viaduct

- *PI #:* 0002923
- *MTP Priority:* Preliminary engineering (PE) and construction (CST – including utility) phases are in Cost Band One (2015 - 2010) of the 2040 MTP.
- *Project description:* Improve SR 25 Connector/West Bay Street between West Lathrop Avenue and East Lathrop Avenue to connect the existing four-lane divided section at the west end of the project with the existing five-lane undivided section at the east end of the project. The project would include four 11/12-foot travel lanes with a variable width raised median that separates westbound and eastbound traffic. Left and right turn lanes would be added or improved as appropriate. The project would include outside curb and gutter with 16-foot shoulder with 6/8-foot wide sidewalks, constructed in compliance with ADA requirements. Crosswalks would be striped and improved to allow for safer pedestrian access.
- *Amendment:* Increase the construction cost from \$9,638,034 to \$11,677,764 – cost increase of more than \$2 million is considered an amendment.
- *Reason for Amendment:* GDOT updated CST cost estimates.
- *Funding/Year:*
 - CST programmed in FY 2016 with \$11,677,764 of M001 funds. The funding split is 80/20 federal/state. GDOT OFM will budget the additional funds requested. GDOT will also provide the matching funds.
- *Requesting date:* May 2015
- *Requesting Agency:* GDOT
- *Comment Period:* 6/9/2015 – 6/23/2015

CANEBRAKE ROAD IMPROVEMENT PROJECT FROM GATEWAY BLVD. TO BASIN RD.

- *PI #:* 0013272
- *MTP Priority:* Preliminary engineering (PE), right-of-way (ROW) and construction (CST) phases are all in Cost Band One (2015 - 2020) of the 2040 MTP, Non-Motorized set aside.
- *Project description:* The proposed project is an extension of the Coastal Georgia Greenway that will provide for a 10-ft shared use path on the southside of Canebrake Road and a 5-ft sidewalk on the north side of Canebrake Road. The shared-use path will connect to the existing shared-use path along Basin Road, which is also part of the Coastal Georgia Greenway.
- *Amendment:* Delete project from the TIP
- *Reason for Amendment:* Chatham County is implementing the project with local SPLOST funds, so no federal dollars will be needed. The TIP only lists projects programmed with federal funds or those projects expecting to receive federal funds.
- *Funding/Year:*
 - Funds programmed for FY 2015 (GDOT oversight - \$11,000 of M301 funds, and preliminary engineering - \$300,000 of local funds), FY 2016 (right-of-way - \$200,000 of local funds) and FY 2017 (utility - \$50,000 of local funds, and construction - \$1,100,000 of M301/local funds) will all be removed from the TIP.

- *Requesting date:* February 2015
- *Requesting Agency:* Chatham County
- *Comment Period:* 6/9/2015 – 6/23/2015

Transit Revisions

Several revisions to the transit section of the FY 2015 - 2018 TIP were proposed for the June 2015 CORE MPO meetings. The following summarizes these transit updates.

Section 5307 Transit Improvements

- *MTP Priority:* Public Transportation
- *Project Description:* Capital Schedule for Chatham Area Transit Authority
- *Amendment:* Update the Section 5307 program by increasing FY 2016 funds to include unobligated FY 2015 amounts based on current needs and available funding.

Financial Summary:

- Amount of FY 2015 Section 5307 program funds decreases to \$0
 - ❖ Federal grant - \$0
 - ❖ State match - \$0
 - ❖ Local match - \$0
 - ❖ Total Section 5307 program funds - \$0
- Amount of FY 2016 Section 5307 program funds increases to \$10,317,151
 - ❖ Federal grant - \$8,253,721
 - ❖ State match - \$1,031,715
 - ❖ Local match - \$1,031,715
 - ❖ Total Section 5307 program funds - \$10,317,151

Project Summary:

- Update the FY 2015 funding amount for the following programmed projects:
 - ❖ Preventative Maintenance decreased from \$1,500,000 to \$0
 - ❖ Operating Assistance decreased from \$3,484,102 to \$0
 - ❖ ITS decreased from \$240,063 to \$0
 - ❖ Passenger Amenities decreased from \$437,500 to \$0
- Update the FY 2016 funding amount for the following programmed projects:
 - ❖ Preventative Maintenance increased from \$1,293,712 to \$2,793,712
 - ❖ Operating Assistance increased from \$0 to \$3,484,102
 - ❖ ITS increased from \$265,440 to \$505,503
 - ❖ Passenger Amenities increased from \$273,984 to \$711,484
- *Requesting date:* June 2015
- *Requesting Agency:* CAT
- *Comment Period:* 6/9/2015 – 6/23/2015

Section 5337 Transit Improvements

- *MTP Priority:* Public Transportation

- *Project Description:* State of Good Repair Schedule for Chatham Area Transit Authority
- *Amendment:* Update the Section 5337 program in FY 2015 and FY 2016 based on current needs and available funding (move the funds from FY 2015 to FY 2016).

Financial Summary:

- Amount of FY 2015 program funding decreases to \$0
 - ❖ Federal grant – decreased from \$355,691 to \$0
 - ❖ State match – decreased from \$44,461 to \$0
 - ❖ Local match - decreased from \$44,461 to \$0
 - ❖ Total Section 5337 program funds in FY 2015 – decreased from \$444,614 to \$0
- Amount of FY 2016 program funding increases to \$599,952
 - ❖ Federal grant – increased from \$124,270 to \$479,962
 - ❖ State match – increased from \$15,534 to \$59,995
 - ❖ Local match - increased from \$15,534 to \$59,995
 - ❖ Total Section 5337 program funds in FY 2016 – increased from \$155,338 to \$599,952

Project Summary:

- The Section 5337-State of Good Repair grant funds will be used for major improvements to extend the useful life of existing ferry vessels in the fleet.
- *Requesting date:* June 2015
- *Requesting Agency:* CAT
- *Comment Period:* 6/9/2015 – 6/23/2015

Section 5339 Transit Improvements

- *MTP Priority:* Public Transportation
- *Project Description:* Bus and Bus Facility Schedule for Chatham Area Transit Authority
- *Amendment:* Update the Section 5339 program in FY 2015 and FY 2016 based on current needs and available funding. Parts of the funds programmed in FY 2015 have been obligated. The unobligated portions of funds are being added to FY 2016.

Financial Summary:

- Amount of FY 2015 program funding decreases by \$491,896
 - ❖ Federal grant – decreased from \$1,152,982 to \$759,464
 - ❖ State match – decreased from \$144,123 to \$94,933
 - ❖ Local match - decreased from \$144,123 to \$94,933
 - ❖ Total Section 5339 program funds in FY 2015 – decreased from \$1,441,227 to \$949,330
- Amount of FY 2016 program funding increases by 491,896
 - ❖ Federal grant – increased from \$405,322 to \$798,839
 - ❖ State match – increased from \$50,665 to \$99,855
 - ❖ Local match - increased from \$50,665 to \$99,855
 - ❖ Total Section 5337 program funds in FY 2016 – increased from \$506,653 to \$998,549

Project Summary:

- The Section 5339-Bus and Bus Facility grant funds will be used for purchase of new vehicles as well as major improvements to extend the useful life of existing bus related facilities and vehicles in the fleet.
- *Requesting date:* June 2015
- *Requesting Agency:* CAT
- *Comment Period:* 6/9/2015 – 6/23/2015

Discretionary Section 5307 FTA-FBD (Passenger Ferry Grant)

- *MTP Priority:* Public Transportation
- *Project Description:* Ferry Landing Renovation
- *Amendment:* Update the funding in FY 2015 and FY 2016 based on current needs and available funding (move the funds from FY 2015 to FY 2016).

Financial Summary:

- Amount of FY 2015 program funding decreases to \$0
 - ❖ Federal grant – decreased from \$374,400 to \$0
 - ❖ State match – decreased from \$46,800 to \$0
 - ❖ Local match - decreased from \$46,800 to \$0
 - ❖ Total funds in FY 2015 – decreased from \$468,000 to \$0
- Amount of FY 2016 program funding increases to \$468,000
 - ❖ Federal grant – increased from \$0 to \$374,400
 - ❖ State match – increased from \$0 to \$46,800
 - ❖ Local match - increased from \$0 to \$46,800
 - ❖ Total funds in FY 2016 – increased from \$0 to \$468,000

Project Summary:

- The discretionary grant will be used to make improvements to three water ferry landings to ensure safe operation of the water ferry service, address capacity constraints, and improve accessibility.
- *Requesting date:* June 2015
- *Requesting Agency:* CAT
- *Comment Period:* 6/9/2015 – 6/23/2015

CORE MPO Adoption of Proposed TIP Revisions

The proposed revisions to the FY 2015 - 2018 TIP as listed above were adopted by the CORE MPO Board at the June 24, 2015 meeting.

Updated TIP Project Pages

Detailed current vs. revised project pages as well as the 2040 MTP addendum for MTP/TIP consistency check are attached with this report.

Current Project Page

COASTAL REGION METROPOLITAN PLANNING ORGANIZATION FY 2015 - 2018 TRANSPORTATION IMPROVEMENT PROGRAM

SR 25 CONN/BAY STREET FROM I-516 TO THE BAY STREET VIADUCT

PROJECT DESCRIPTION: Improve SR 25 Connector/West Bay Street between West Lathrop Avenue and East Lathrop Avenue to connect the existing four-lane divided section at the west end of the project with the existing five-lane undivided section at the east end of the project. The project would include four 11/12-foot travel lanes with a variable width raised median that separates westbound and eastbound traffic. Left and right turn lanes would be added or improved as appropriate. The project would include outside curb and gutter with 16-foot shoulder with 6/8-foot wide sidewalks, constructed in compliance with ADA requirements. Crosswalks would be striped and improved to allow for safer pedestrian access.

P.I. #: 0002923
TIP #: 97-H-10
COUNTY: CHATHAM
PROJ. #: NHS-002-00(923)
FUND: M001, M230

GDOT DISTRICT: 5

TRAFFIC VOL. 2005 AADT: 22,400 2030: 32,500

CONG. DISTRICT: 1

NO. OF LANES EXISTING: 4 PLANNED: 4

RC: CG

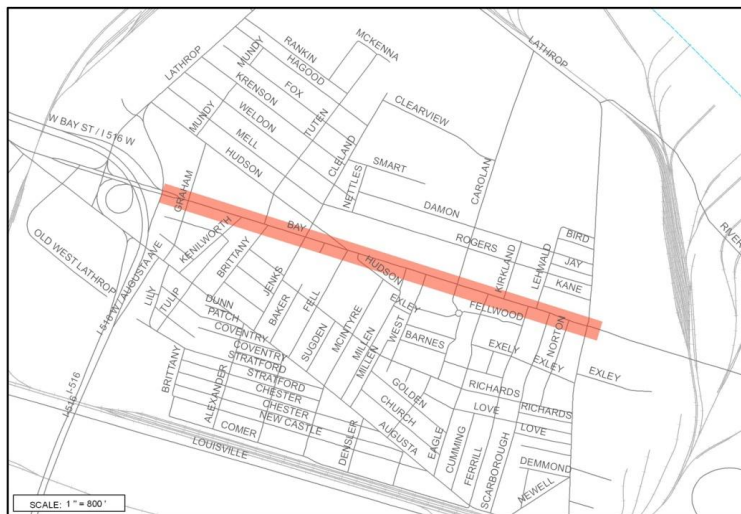
LOCAL ROAD #: STATE/US ROAD #: SR 25

LENGTH (MI): 1.1

COMMENTS/REMARKS: Preliminary engineering funds were authorized in 2002. Several Public Information Open Houses (PIOH) have been held for the project. Right-of-way funds programmed for FY 2010 with the MPO sub-allocation of ARRA funds (C230 funds) and for FY 2013 with the National Highway System funds (M001 funds) have been authorized. ROW acquisition is underway. Utility phase and construction are programmed in FY 2016. County requested M230 funds for UTL. CST will be funded with M001 funds. A PE phase was added to FY 2015 with M001 funds to cover GDOT project oversight.

PROJECT PHASE	\$ SOURCE	FY 2015	FY 2016	FY 2017	FY 2018	TOTAL
PRELIM. ENGR.	Federal/State	\$25,000	\$0	\$0	\$0	\$25,000
RIGHT-OF-WAY	Authorized	\$0	\$0	\$0	\$0	\$0
UTILITY	Federal/Local	\$0	717,876	\$0	\$0	\$717,876
CONSTRUCTION	Federal/State	\$0	\$9,638,034	\$0	\$0	\$9,638,034
PROJECT COST		\$25,000	\$10,355,910	\$0	\$0	\$10,380,910
FEDERAL COST		\$20,000	\$8,284,727	\$0	\$0	\$8,304,727
STATE COST		\$5,000	\$1,927,609	\$0	\$0	\$1,932,609
LOCAL COST		\$0	\$143,576	\$0	\$0	\$143,576

PROJECT LOCATION



Revised Project Page as of June 2015

COASTAL REGION METROPOLITAN PLANNING ORGANIZATION FY 2015 - 2018 TRANSPORTATION IMPROVEMENT PROGRAM

SR 25 CONN/BAY STREET FROM I-516 TO THE BAY STREET VIADUCT

PROJECT DESCRIPTION: Improve SR 25 Connector/West Bay Street between West Lathrop Avenue and East Lathrop Avenue to connect the existing four-lane divided section at the west end of the project with the existing five-lane undivided section at the east end of the project. The project would include four 11/12-foot travel lanes with a variable width raised median that separates westbound and eastbound traffic. Left and right turn lanes would be added or improved as appropriate. The project would include outside curb and gutter with 16-foot shoulder with 6/8-foot wide sidewalks, constructed in compliance with ADA requirements. Crosswalks would be striped and improved to allow for safer pedestrian access.

P.I. #: 0002923
TIP #: 97-H-10
COUNTY: CHATHAM
PROJ. #: NHS-002-00(923)
FUND: M001, M230

GDOT DISTRICT: 5

TRAFFIC VOL. 2005 AADT: 22,400 2030: 32,500

CONG. DISTRICT: 1

NO. OF LANES EXISTING: 4 PLANNED: 4

RC: CG

LOCAL ROAD #: STATE/US ROAD #: SR 25

LENGTH (MI): 1.1

COMMENTS/REMARKS: Preliminary engineering funds were authorized in 2002. Several Public Information Open Houses (PIOH) have been held for the project. Right-of-way funds programmed for FY 2010 with the MPO sub-allocation of ARRA funds (C230 funds) and for FY 2013 with the National Highway System funds (M001 funds) have been authorized. ROW acquisition is complete. Utility phase and construction are programmed in FY 2016. Chatham County requested M230 funds for UTL. CST will be funded with M001 funds.

PROJECT PHASE	\$ SOURCE	FY 2015	FY 2016	FY 2017	FY 2018	TOTAL
PRELIM. ENGR.	Federal/State	\$25,000	\$0	\$0	\$0	\$25,000
RIGHT-OF-WAY	Authorized	\$0	\$0	\$0	\$0	\$0
UTILITY	Federal/Local	\$0	\$1,076,325	\$0	\$0	\$1,076,325
CONSTRUCTION	Federal/State	\$0	\$11,677,764	\$0	\$0	\$11,677,764
PROJECT COST		\$25,000	\$12,779,089	\$0	\$0	\$12,779,089
FEDERAL COST		\$20,000	\$10,223,271	\$0	\$0	\$10,223,271
STATE COST		\$5,000	\$2,340,553	\$0	\$0	\$2,340,553
LOCAL COST		\$0	\$215,265	\$0	\$0	\$215,265

PROJECT LOCATION



Current Project Page

COASTAL REGION METROPOLITAN PLANNING ORGANIZATION FY 2015 - 2018 TRANSPORTATION IMPROVEMENT PROGRAM

SR 26 FROM I-516 TO CS 188/VICTORY DRIVE

PROJECT DESCRIPTION: This project consists of the proposed widening of SR 26/US 80/Ogeechee Road from just east of Lynes Parkway to just east of the Springfield Canal and the SR 26/US 80/Ogeechee Road Intersection with Victory Drive. Approximately 1400 feet of Victory Drive would also be reconstructed to tie the proposed widening of SR 26/US 80/Ogeechee Road into the existing Victory Drive roadway. The existing two-lane roadway would be widened to provide four twelve-foot wide travel lanes, with two four-foot wide bicycle lanes, one in each direction, and a twenty-foot wide raised median.

P.I. #: 521855
TIP #: 87-H-18B
COUNTY: CHATHAM
PROJ. #: STP-064-1(40)SPUR
FUND: M001, M230

GDOT DISTRICT: 5

TRAFFIC VOL. 2005 AADT: 16,300 2030: 30,960

CONG. DISTRICT: 1

NO. OF LANES EXISTING: 2 PLANNED: 4

RC: CG

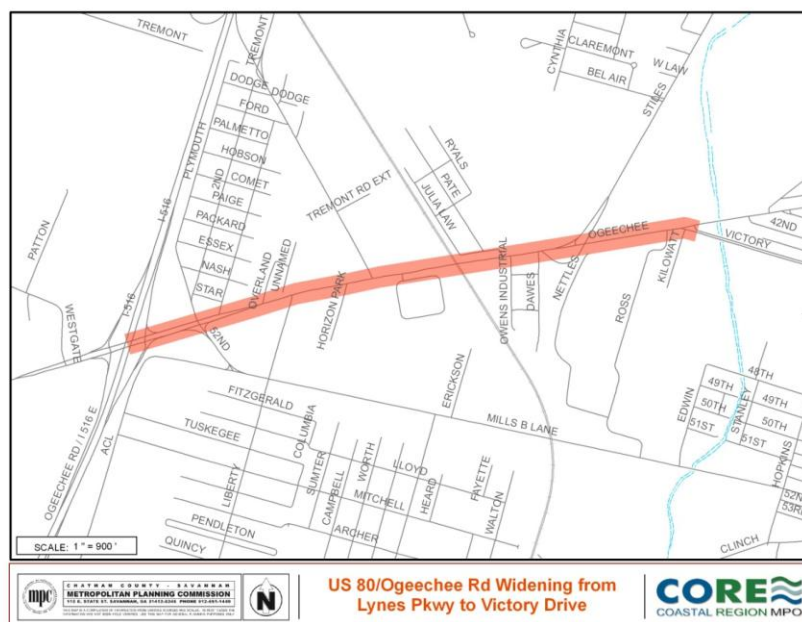
LOCAL ROAD #: STATE/US ROAD #: SR 26/US 80

LENGTH (MI): 1.38

COMMENTS/REMARKS: This is an identified priority bikeway corridor in the CORE MPO's Bikeway Plan. Preliminary engineering funds were authorized in 1993. The project was originally scheduled to be let for construction in FY 1996 but got delayed for various reasons. The project is currently going through the environmental process. Right-of-way phase is programmed in FY 2017 with M230 funds. A PE phase was added to FY 2015 with M001 funds to cover GDOT project oversight.

PROJECT PHASE	\$ SOURCE	FY 2015	FY 2016	FY 2017	FY 2018	TOTAL
PRELIM. ENGR.	Federal/State	\$500,000	\$0	\$0	\$0	\$500,000
RIGHT-OF-WAY	Federal/State	\$0	\$0	\$6,630,428	\$0	\$6,630,428
UTILITY	State	\$0	\$0	\$0	\$0	\$0
CONSTRUCTION	Federal/State	\$0	\$0	\$0	\$0	\$0
PROJECT COST		\$500,000	\$0	\$6,630,428	\$0	\$7,130,428
FEDERAL COST		\$400,000	\$0	\$5,304,342	\$0	\$5,704,342
STATE COST		\$100,000	\$0	\$1,326,086	\$0	\$1,426,086
LOCAL COST		\$0	\$0	\$0	\$0	\$0

PROJECT LOCATION

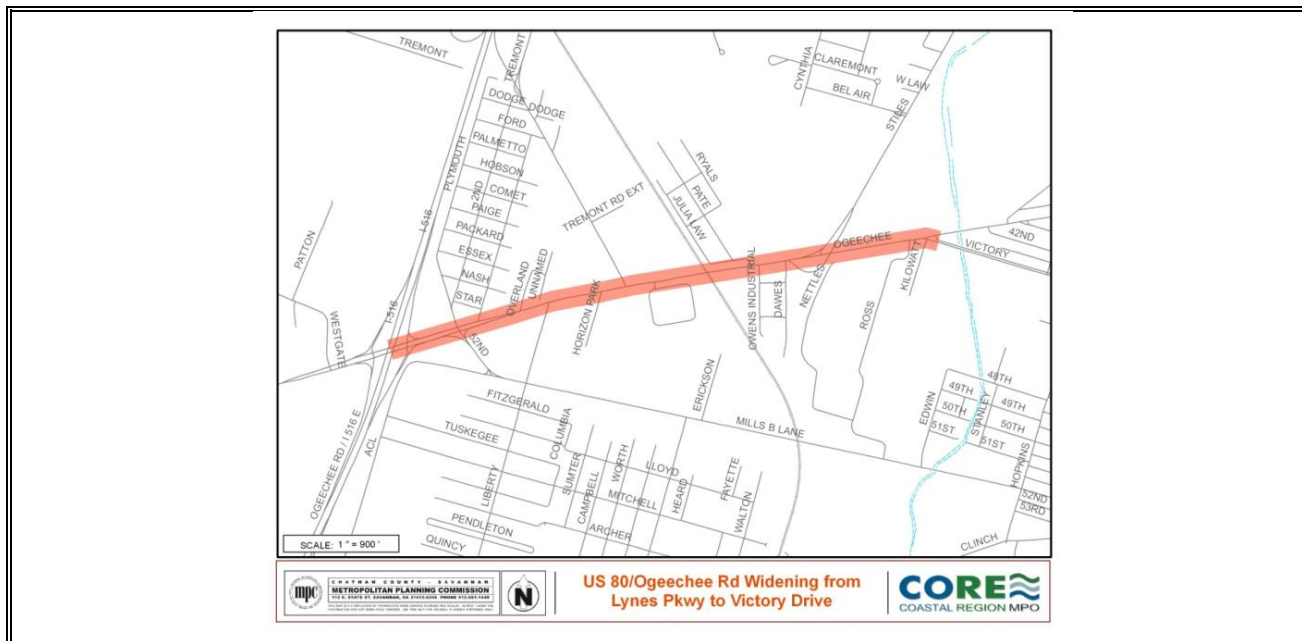


Revised Project Page as of June 2015

COASTAL REGION METROPOLITAN PLANNING ORGANIZATION FY 2015 - 2018 TRANSPORTATION IMPROVEMENT PROGRAM

SR 26 FROM I-516 TO CS 188/VICTORY DRIVE				P.I. #: 521855		
PROJECT DESCRIPTION: This project consists of the proposed widening of SR 26/US 80/Ogeechee Road from just east of Lynes Parkway to just east of the Springfield Canal and the SR 26/US 80/Ogeechee Road Intersection with Victory Drive. Approximately 1400 feet of Victory Drive would also be reconstructed to tie the proposed widening of SR 26/US 80/Ogeechee Road into the existing Victory Drive roadway. The existing two-lane roadway would be widened to provide four twelve-foot wide travel lanes, with two four-foot wide bicycle lanes, one in each direction, and a twenty-foot wide raised median.				TIP #: 87-H-18B		
				COUNTY: CHATHAM		
				PROJ. #: STP-064-1(40)SPUR		
				FUND: M001, M230		
				GDOT DISTRICT: 5		
TRAFFIC VOL. 2005 AADT:		16,300	2030:		30,960	CONG. DISTRICT: 1
NO. OF LANES EXISTING:		2	PLANNED:		4	RC: CG
LOCAL ROAD #:		STATE/US ROAD #: SR 26/US 80			LENGTH (MI): 1.38	
COMMENTS/REMARKS: This is an identified priority bikeway corridor in the CORE MPO’s Bikeway Plan. Preliminary engineering funds were authorized in 1993. The project was originally scheduled to be let for construction in FY 1996 but got delayed for various reasons. The project is currently going through the environmental process. Right-of-way phase is programmed in FY 2017 with M230 funds. A PE phase was added to FY 2015 with M001 funds to cover GDOT project oversight but is being moved to FY 2016.						
PROJECT PHASE	\$ SOURCE	FY 2015	FY 2016	FY 2017	FY 2018	TOTAL
PRELIM. ENGR.	Federal/State	\$0	\$500,000	\$0	\$0	\$500,000
RIGHT-OF-WAY	Federal/State	\$0	\$0	\$6,630,428	\$0	\$6,630,428
UTILITY	State	\$0	\$0	\$0	\$0	\$0
CONSTRUCTION	Federal/State	\$0	\$0	\$0	\$0	\$0
PROJECT COST		\$0	\$500,000	\$6,630,428	\$0	\$7,130,428
FEDERAL COST		\$0	\$400,000	\$5,304,342	\$0	\$5,704,342
STATE COST		\$0	\$100,000	\$1,326,086	\$0	\$1,426,086
LOCAL COST		\$0	\$0	\$0	\$0	\$0

PROJECT LOCATION



Current Project Page

COASTAL REGION METROPOLITAN PLANNING ORGANIZATION FY 2015 - 2018 TRANSPORTATION IMPROVEMENT PROGRAM

SAVANNAH MPO STRATEGIC PLANNING STUDY - SECTOR ELEVEN TO SECTOR FOURTEEN				P.I. #: 0010563, 0011742, TBA, TBA		
				TIP #: 2012-CORE-04, 2013-CORE-01, 2014-CORE-01, 2015-CORE-01		
				COUNTY: CHATHAM		
				PROJ. #:		
				FUND: M230		
				GDOT DISTRICT: 5		
				CONG. DISTRICT: 1		
PROJECT DESCRIPTION: Special Transportation Studies				RC: CG		
TRAFFIC VOL. 2005 AADT:		N/A	2030:		N/A	
NO. OF LANES EXISTING:		N/A	PLANNED:		N/A	
LOCAL ROAD #:		STATE/US ROAD #:			LENGTH (MI):	
COMMENTS/REMARKS: CORE MPO has set aside some M230 funds each year to carry out special transportation studies in the Savannah Metropolitan Area. PI# 0010563 sets aside \$750,000 of matched M230 funds in FY 2015. PI# 0011742 sets aside \$500,000 of matched M230 funds in FY 2016. Another \$500,000 is set aside for FY 2017 and FY 2018 respectively with PI# to be assigned by GDOT. These set-aside amounts are for the MPO’s future planning activities. Specific planning tasks are identified as the needs arise. Previous Sector Study planning set-aside funds have been used to conduct various studies – the Southwest Sector Study, the I-16 Exit Removal Study, the development of the 2040 MTP, the President Street Development Study, the Congestion Management Process (CMP) update, the Traffic Impact Analysis (TIA) Study, the Freight Transportation Plan development, etc.						
PROJECT PHASE	\$ SOURCE	FY 2015	FY 2016	FY 2017	FY 2018	TOTAL
PI#		0010563	0011742	TBA	TBA	
TIP#		2012-CORE-04	2013-CORE-01	2014-CORE-01	2015-CORE-01	
PRELIM. ENGR.	Federal/Local	\$159,621	\$500,000	\$500,000	\$500,000	\$1,659,621
RIGHT-OF-WAY	None	\$0	\$0	\$0	\$0	\$0
CONSTRUCTION	None	\$0	\$0	\$0	\$0	\$0
PROJECT COST		\$159,621	\$500,000	\$500,000	\$500,000	\$1,659,621
FEDERAL COST		\$127,697	\$400,000	\$400,000	\$400,000	\$1,327,697
STATE COST		\$0	\$0	\$0	\$0	\$0
LOCAL COST		\$31,924	\$100,000	\$100,000	\$100,000	\$331,924

PROJECT LOCATION

CORE MPO STRATEGIC PLANNING STUDY

SECTOR ELEVEN (PI# 0010563)
SECTOR TWELVE (PI# 0011742)
SECTOR THIRTEEN (PI# TBA)
SECTOR FOURTEEN (PI# TBA)

Revised Project Page as of June 2015

**COASTAL REGION METROPOLITAN PLANNING ORGANIZATION
FY 2015 - 2018 TRANSPORTATION IMPROVEMENT PROGRAM**

SAVANNAH MPO STRATEGIC PLANNING STUDY - SECTOR ELEVEN TO SECTOR FOURTEEN PROJECT DESCRIPTION: Special Transportation Studies				P.I. #: 0010563, 0011742, TBA, TBA		
				TIP #: 2012-CORE-04, 2013-CORE-01, 2014-CORE-01, 2015-CORE-01		
				COUNTY: CHATHAM		
				PROJ. #:		
				FUND: M230		
				GDOT DISTRICT: 5		
TRAFFIC VOL. 2005 AADT: N/A		2030: N/A		CONG. DISTRICT: 1		
NO. OF LANES EXISTING: N/A		PLANNED: N/A		RC: CG		
LOCAL ROAD #:		STATE/US ROAD #:		LENGTH (MI):		
COMMENTS/REMARKS: CORE MPO has set aside some M230 funds each year to carry out special transportation studies in the Savannah Metropolitan Area. Originally PI# 0010563 set aside \$750,000 of matched M230 funds in FY 2015 but that amount has been reduced to \$159,621 to fund other projects. These funds are being moved to FY 2016. PI# 0011742 sets aside \$500,000 of matched M230 funds in FY 2016. Another \$500,000 is set aside for FY 2017 and FY 2018 respectively with PI# to be assigned by GDOT. These set-aside amounts are for the MPO’s future planning activities. Specific planning tasks are identified as the needs arise.						
PROJECT PHASE	\$ SOURCE	FY 2015	FY 2016	FY 2017	FY 2018	TOTAL
PI#			0010563/ 0011742	TBA	TBA	
TIP#			2012-CORE-04 2013-CORE-01	2014-CORE-01	2015-CORE-01	
PRELIM. ENGR.	Federal/Local	\$0	\$659,621	\$500,000	\$500,000	\$1,659,621
RIGHT-OF-WAY	None	\$0	\$0	\$0	\$0	\$0
CONSTRUCTION	None	\$0	\$0	\$0	\$0	\$0
PROJECT COST		\$0	\$659,621	\$500,000	\$500,000	\$1,659,621
FEDERAL COST		\$0	\$527,697	\$400,000	\$400,000	\$1,327,697
STATE COST		\$0	\$0	\$0	\$0	\$0
LOCAL COST		\$0	\$131,924	\$100,000	\$100,000	\$331,924

PROJECT LOCATION

CORE MPO STRATEGIC PLANNING STUDY

SECTOR ELEVEN (PI# 0010563) and SECTOR TWELVE (PI# 0011742)

- CAT Special Transportation Study
- Model Development and Applications
- Victory Drive Corridor Study Phase IV
- Congestion Management Process
- MAP-21 Compliance
- CORE MPO Member Requested Projects

SECTOR THIRTEEN (PI# TBA)

SECTOR FOURTEEN (PI# TBA)

Current Project Page

**COASTAL REGION METROPOLITAN PLANNING ORGANIZATION
FY 2015 - 2018 TRANSPORTATION IMPROVEMENT PROGRAM**

CAT VEHICLE PURCHASE FOR 2015 TO 2018 PROJECT DESCRIPTION: Transit				P.I. #: 0013277, 0013278, 0013279, 0013280		
				TIP #: 2015-Transit-01, 2015-Transit-02, 2015-Transit-03, 2015-Transit-04		
				COUNTY: CHATHAM		
				PROJ. #:		
				FUND: M230		
				GDOT DISTRICT: 5		
TRAFFIC VOL. 2005 AADT: N/A		2030: N/A		CONG. DISTRICT: 1		
NO. OF LANES EXISTING: N/A		PLANNED: N/A		RC: CG		
LOCAL ROAD #:		STATE/US ROAD #:		LENGTH (MI):		
COMMENTS/REMARKS: CORE MPO is transferring some FHWA funds to the Chatham Area Transit (CAT) for vehicle purchase based on FTA criteria and State of Good Repair.						
PROJECT PHASE	\$ SOURCE	FY 2015	FY 2016	FY 2017	FY 2018	TOTAL
PI#		0013277	0013278	0013279	0013280	
TIP#		2015-Transit-01	2015-Transit-02	2015-Transit-03	2015-Transit-04	
PRELIM. ENGR.	None	\$0	\$0	\$0	\$0	\$0
RIGHT-OF-WAY	None	\$0	\$0	\$0	\$0	\$0
CONSTRUCTION	Federal/Local	\$700,000	\$700,000	\$700,000	\$700,000	\$2,800,000
PROJECT COST		\$700,000	\$700,000	\$700,000	\$700,000	\$2,800,000
FEDERAL COST		\$560,000	\$560,000	\$560,000	\$560,000	\$2,240,000
STATE COST		\$0	\$0	\$0	\$0	\$0
LOCAL COST		\$140,000	\$140,000	\$140,000	\$140,000	\$560,000

PROJECT LOCATION

**CHATHAM AREA TRANSIT (CAT) VEHICLE PURCHASE
FOR 2015, 2016, 2017 AND 2018**

Revised Project Page as of June 2015

**COASTAL REGION METROPOLITAN PLANNING ORGANIZATION
FY 2015 - 2018 TRANSPORTATION IMPROVEMENT PROGRAM**

CAT VEHICLE PURCHASE FOR 2016 TO 2018 PROJECT DESCRIPTION: Transit				P.I. #: 0013277, 0013278, 0013279, 0013280		
				TIP #: 2015-Transit-01, 2015-Transit-02, 2015-Transit-03, 2015-Transit-04		
				COUNTY: CHATHAM		
				PROJ. #:		
				FUND: M230		
				GDOT DISTRICT: 5		
TRAFFIC VOL. 2005 AADT: N/A		2030: N/A		CONG. DISTRICT: 1		
NO. OF LANES EXISTING: N/A		PLANNED: N/A		RC: CG		
LOCAL ROAD #:		STATE/US ROAD #:		LENGTH (MI):		
COMMENTS/REMARKS: CORE MPO is transferring some FHWA funds (\$700,000 of matched M230 funds each year) to the Chatham Area Transit (CAT) for vehicle purchase based on FTA criteria and State of Good Repair. The funds programmed in FY 2015 are being moved to FY 2016. CAT will provide the local match.						
PROJECT PHASE	\$ SOURCE	FY 2015	FY 2016	FY 2017	FY 2018	TOTAL
PI#			0013277 0013278	0013279	0013280	
TIP#			2015-Transit-01 2015-Transit-02	2015-Transit-03	2015-Transit-04	
PRELIM. ENGR.	None	\$0	\$0	\$0	\$0	\$0
RIGHT-OF-WAY	None	\$0	\$0	\$0	\$0	\$0
CONSTRUCTION	Federal/Local	\$0	\$1,400,000	\$700,000	\$700,000	\$2,800,000
PROJECT COST		\$0	\$1,400,000	\$700,000	\$700,000	\$2,800,000
FEDERAL COST		\$0	\$1,120,000	\$560,000	\$560,000	\$2,240,000
STATE COST		\$0	\$0	\$0	\$0	\$0
LOCAL COST		\$0	\$280,000	\$140,000	\$140,000	\$560,000

PROJECT LOCATION

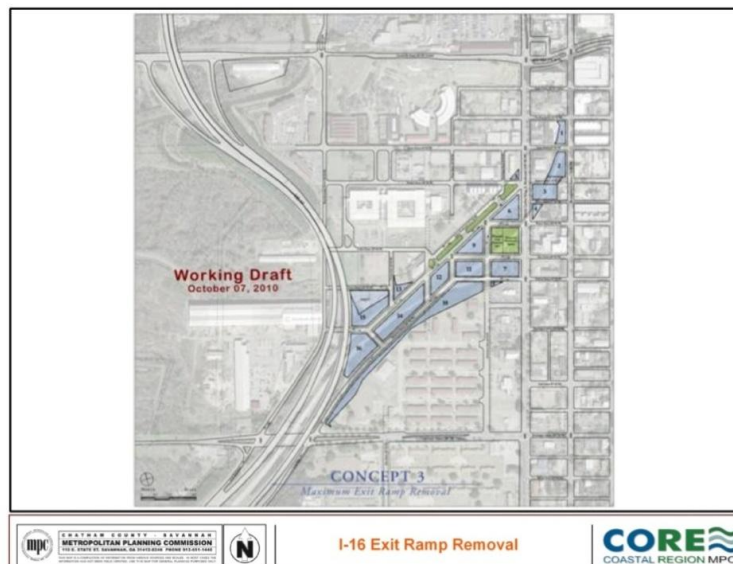
**CHATHAM AREA TRANSIT (CAT) VEHICLE PURCHASE
FOR 2016, 2017 AND 2018**

Current Project Page

COASTAL REGION METROPOLITAN PLANNING ORGANIZATION FY 2015 - 2018 TRANSPORTATION IMPROVEMENT PROGRAM

I-16 @ MONTGOMERY ST & @ MLK JR BLVD - RAMP & OVERPASS				P.I. #: 0011744		
				TIP #: 2013-H-02		
				COUNTY: CHATHAM		
				PROJ. #:		
				FUND: M230*		
				GDOT DISTRICT: 5		
TRAFFIC VOL. 2005 AADT: N/A		2030: N/A		CONG. DISTRICT: 1		
NO. OF LANES EXISTING: 0		PLANNED: 0		RC: CG		
LOCAL ROAD #:		STATE/US ROAD #: I-16		LENGTH (MI):		
COMMENTS/REMARKS: The CORE MPO has conducted the I-16 Exit Ramp Removal Study and is developing the study recommendations into a highway and economic development project. The funds programmed in FY 2017 are to be used for GDOT oversight of the project and for initiating the 1 st phase of preliminary engineering work (scoping). The CST phase is in long range.						
*CORE MPO is currently the project manager. Chatham County SPLOST funds will provide the local match. However, the MPO will continue to seek state match.						
PROJECT PHASE	\$ SOURCE	FY 2015	FY 2016	FY 2017	FY 2018	TOTAL
SCOPING	Federal/Local*	\$0	\$0	\$1,100,000	\$0	\$1,100,000
PRELIM. ENGR.	None	\$0	\$0	\$0	\$0	\$0
RIGHT-OF-WAY	None	\$0	\$0	\$0	\$0	\$0
CONSTRUCTION	None	\$0	\$0	\$0	\$0	\$0
PROJECT COST		\$0	\$0	\$1,100,000	\$0	\$1,100,000
FEDERAL COST		\$0	\$0	\$880,000	\$0	\$880,000
STATE COST		\$0	\$0	\$0	\$0	\$0
LOCAL COST*		\$0	\$0	\$220,000	\$0	\$220,000

PROJECT LOCATION



Revised Project Page as of June 2015

COASTAL REGION METROPOLITAN PLANNING ORGANIZATION FY 2015 - 2018 TRANSPORTATION IMPROVEMENT PROGRAM

I-16 @ MONTGOMERY ST & @ MLK JR BLVD - RAMP & OVERPASS				P.I. #:		0011744
				TIP #:		2013-H-02
				COUNTY:		CHATHAM
				PROJ. #:		
				FUND:		M230*
PROJECT DESCRIPTION: the project is to remove and replace the I-16 exit ramps and overpass at Montgomery Street and MLK Jr. Blvd in Savannah in order to restore part of the original grid system removed when I-16 was constructed. Major objectives are to restore efficient connections between the city center, the Downtown Expansion Area to the west, and surrounding neighborhoods; and recreate viable, pedestrian-friendly urban form.				GDOT DISTRICT:		5
				CONG. DISTRICT:		1
				RC:		CG
				LENGTH (MI):		
TRAFFIC VOL. 2005 AADT:		N/A	2030:		N/A	
NO. OF LANES EXISTING:		0	PLANNED:		0	
LOCAL ROAD #:		STATE/US ROAD #:			I-16	
COMMENTS/REMARKS: The CORE MPO has conducted the I-16 Exit Ramp Removal Study and is developing the study recommendations into a highway and economic development project. The funds programmed in FY 2017 (originally \$1.1 million) are to be used for GDOT oversight of the project and for initiating the 1 st phase of preliminary engineering work (scoping). The funding amount is being reduced based on latest cost estimates. The released funds can be used for PI# 0002923 to cover additional utility cost. The CST phase is in long range.						
*CORE MPO is currently the project manager. Chatham County SPLOST funds will provide the local match. However, the MPO will continue to seek state match.						
PROJECT PHASE	\$ SOURCE	FY 2015	FY 2016	FY 2017	FY 2018	TOTAL
SCOPING	Federal/Local*	\$0	\$0	\$741,551	\$0	\$741,551
PRELIM. ENGR.	None	\$0	\$0	\$0	\$0	\$0
RIGHT-OF-WAY	None	\$0	\$0	\$0	\$0	\$0
CONSTRUCTION	None	\$0	\$0	\$0	\$0	\$0
PROJECT COST		\$0	\$0	\$741,551	\$0	\$741,551
FEDERAL COST		\$0	\$0	\$593,241	\$0	\$593,241
STATE COST		\$0	\$0	\$0	\$0	\$0
LOCAL COST*		\$0	\$0	\$148,310	\$0	\$148,310

PROJECT LOCATION

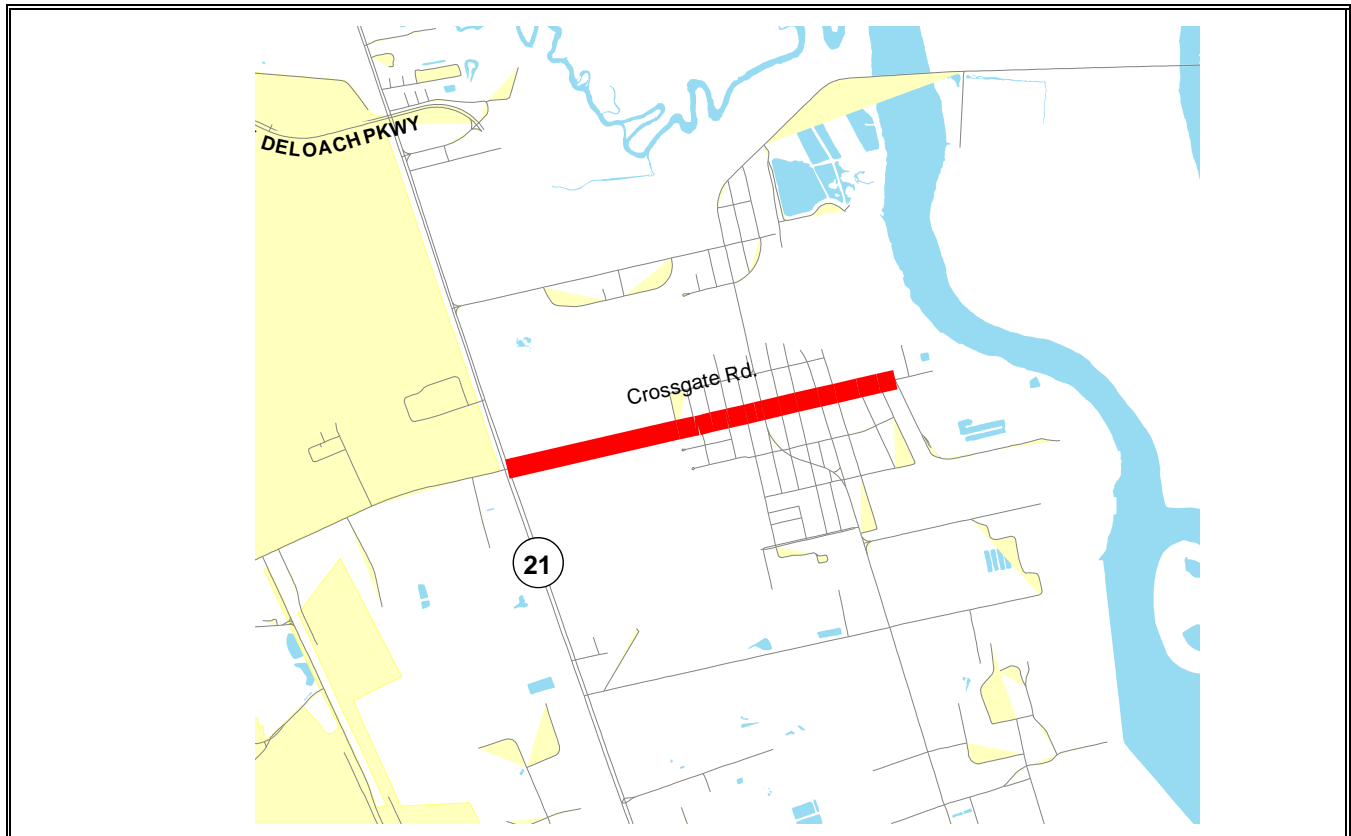


Current Project Page

COASTAL REGION METROPOLITAN PLANNING ORGANIZATION FY 2015 - 2018 TRANSPORTATION IMPROVEMENT PROGRAM

CS 651/CROSSGATE RD FM SR 21 TO NS#734150L IN PORT WENTWORTH				P.I. #: 0010553		
				TIP #: 2014-GDOT-02		
				COUNTY: CHATHAM		
				PROJ. #:		
				FUND: M240		
				GDOT DISTRICT: 5		
TRAFFIC VOL. 2005 AADT:			2030:		CONG. DISTRICT: 1	
NO. OF LANES EXISTING: 2		PLANNED: 2		CRC: CG		
LOCAL ROAD #:		STATE/US ROAD:			LENGTH (MI): 0.6	
COMMENTS/REMARKS: This is a newly added project by GDOT. The project is related to the Port’s Last Mile project (PI# 0008690) that has been let. Preliminary engineering was programmed in FY 2014 and the funds have been authorized. CST is programmed in FY 2015 with M240 funds.						
PROJECT PHASE	\$ SOURCE	FY 2015	FY 2016	FY 2017	FY 2018	TOTAL
PRELIM. ENGR.	Authorized	\$0	\$0	\$0	\$0	\$0
RIGHT-OF-WAY	None	\$0	\$0	\$0	\$0	\$0
CONSTRUCTION	Federal/State	\$1,273,450	\$0	\$0	\$0	\$1,273,450
PROJECT COST		\$1,273,450	\$0	\$0	\$0	\$1,273,450
FEDERAL COST		\$1,018,760	\$0	\$0	\$0	\$1,018,760
STATE COST		\$254,690	\$0	\$0	\$0	\$254,690
LOCAL COST		\$0	\$0	\$0	\$0	\$0

PROJECT LOCATION

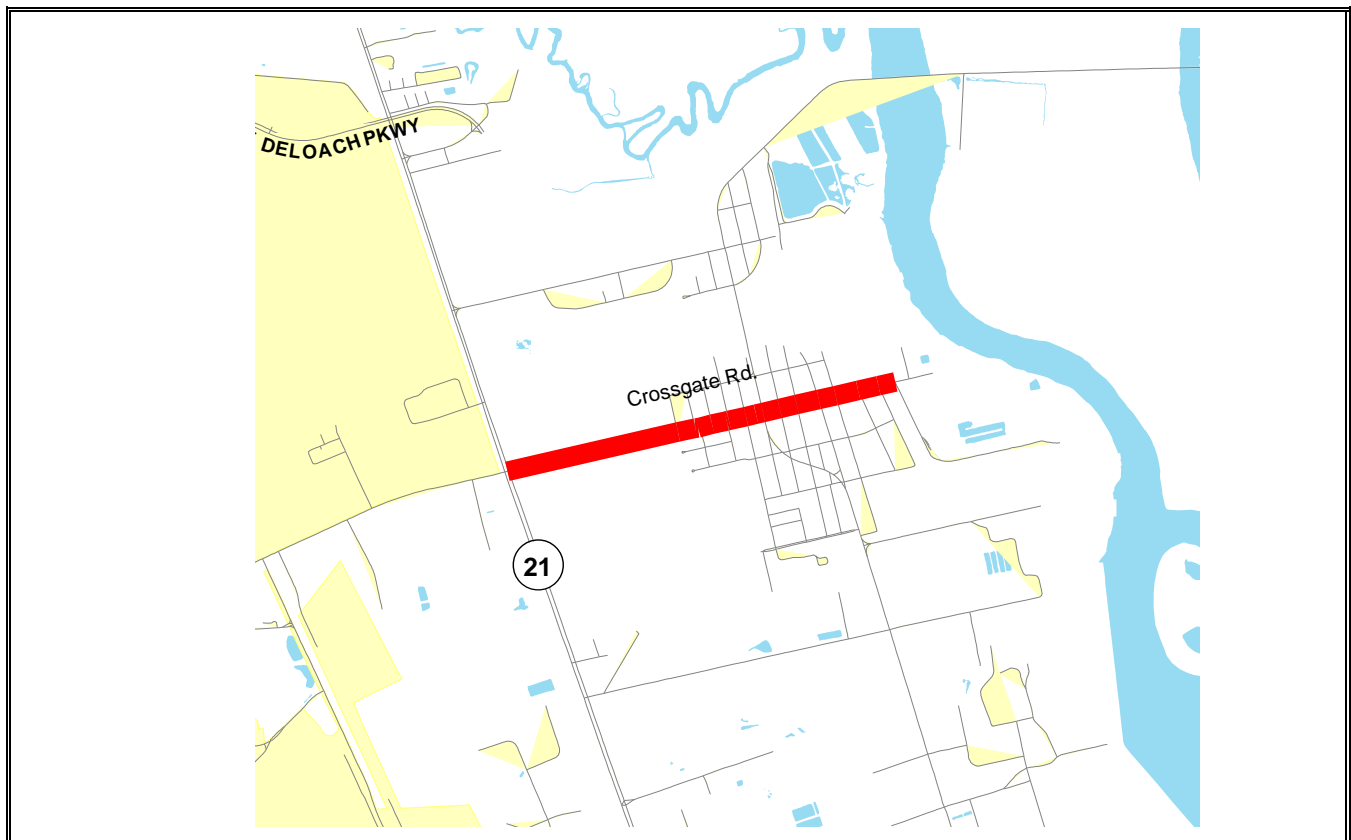


Revised Project Page as of June 2015

**COASTAL REGION METROPOLITAN PLANNING ORGANIZATION
FY 2015 - 2018 TRANSPORTATION IMPROVEMENT PROGRAM**

CS 651/CROSSGATE RD FM SR 21 TO NS#734150L IN PORT WENTWORTH				P.I. #: 0010553			
				TIP #: 2014-GDOT-02			
				COUNTY: CHATHAM			
				PROJ. #:			
				FUND: M240			
				GDOT DISTRICT: 5			
PROJECT DESCRIPTION: Resurface and Maintenance				CONG. DISTRICT: 1			
				CRC: CG			
TRAFFIC VOL. 2005 AADT:		2030:		LENGTH (MI): 0.6			
NO. OF LANES EXISTING: 2		PLANNED: 2					
LOCAL ROAD #:		STATE/US ROAD					
COMMENTS/REMARKS: This is a newly added project by GDOT. The project is related to the Port's Last Mile project (PI# 0008690) that is under construction. Preliminary engineering was programmed in FY 2014 and the funds have been authorized. CST is programmed in FY 2015 with M240 funds. However, due to MAP-21 funding uncertainties, these funds are being moved to FY 2016.							
PROJECT PHASE	\$ SOURCE	FY 2015	FY 2016	FY 2017	FY 2018	TOTAL	
PRELIM. ENGR.	Authorized	\$0	\$0	\$0	\$0	\$0	
RIGHT-OF-WAY	None	\$0	\$0	\$0	\$0	\$0	
CONSTRUCTION	Federal/State	\$0	\$1,273,450	\$0	\$0	\$1,273,450	
PROJECT COST		\$0	\$1,273,450	\$0	\$0	\$1,273,450	
FEDERAL COST		\$0	\$1,018,760	\$0	\$0	\$1,018,760	
STATE COST		\$0	\$254,690	\$0	\$0	\$254,690	
LOCAL COST		\$0	\$0	\$0	\$0	\$0	

PROJECT LOCATION



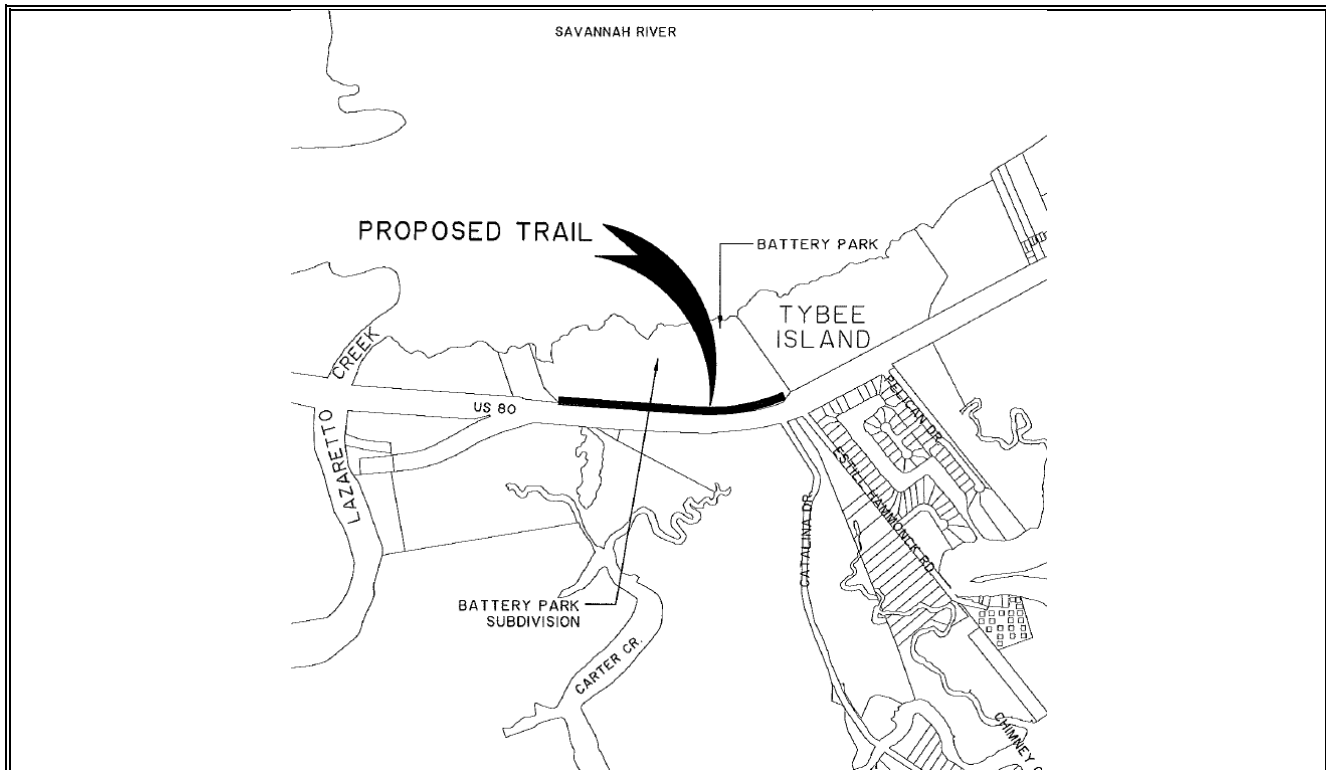
Current Project Page

COASTAL REGION METROPOLITAN PLANNING ORGANIZATION FY 2015 - 2018 TRANSPORTATION IMPROVEMENT PROGRAM

MARSH HEN TRAIL FM E OF OLD HWY 80 TO BATTERY DR - PHASE II				P.I. #: 0013271		
PROJECT DESCRIPTION: The project of approximately 0.4 mile will create a shared use path on the former Marsh Hen railroad bed, along the north edge of US 80, from just east of Highway 80 to Battery Dr. This will provide an extension of a Phase I project, from Battery Dr. to Byers St., which was funded through Transportation Enhancement award and local match.				TIP #: 2015-TAP-1		
				COUNTY: CHATHAM		
				PROJ. #:		
				FUND: M301		
				GDOT DISTRICT: 5		
TRAFFIC VOL. 2005 AADT:				2030:		CONG. DISTRICT: 1
NO. OF LANES EXISTING:				PLANNED:		RC:
LOCAL ROAD #:		STATE/US ROAD #:		LENGTH (MI): 0.40		
COMMENTS/REMARKS: This project is consistent with the Non-motorized Transportation Plan and the CORE MPO US 80 Bridges Study. Along with bike/ped accommodations on the Lazaretto Bridge replacement, also recommended in the latter study, the Marsh Hen Trail will provide an off-road connection from Tybee Island onto McQueen's Island. That bridge replacement project is in the scoping phase.						

PROJECT PHASE	\$ SOURCE	FY 2015	FY 2016	FY 2017	FY 2018	TOTAL
GDOT Oversight	Federal/Local	\$7,000	\$0	\$0	\$0	\$7,000
PRELIM. ENGR.	Local	\$0	\$0	\$0	\$0	\$0
RIGHT-OF-WAY	Local	\$0	\$0	\$0	\$0	\$0
CONSTRUCTION	Federal/Local	\$168,453	\$0	\$0	\$0	\$168,453
PROJECT COST		\$168,453	\$0	\$0	\$0	\$168,453
FEDERAL COST		\$134,762	\$0	\$0	\$0	\$134,762
STATE COST		\$0	\$0	\$0	\$0	\$0
LOCAL COST		\$33,691	\$0	\$0	\$0	\$33,691

PROJECT LOCATION

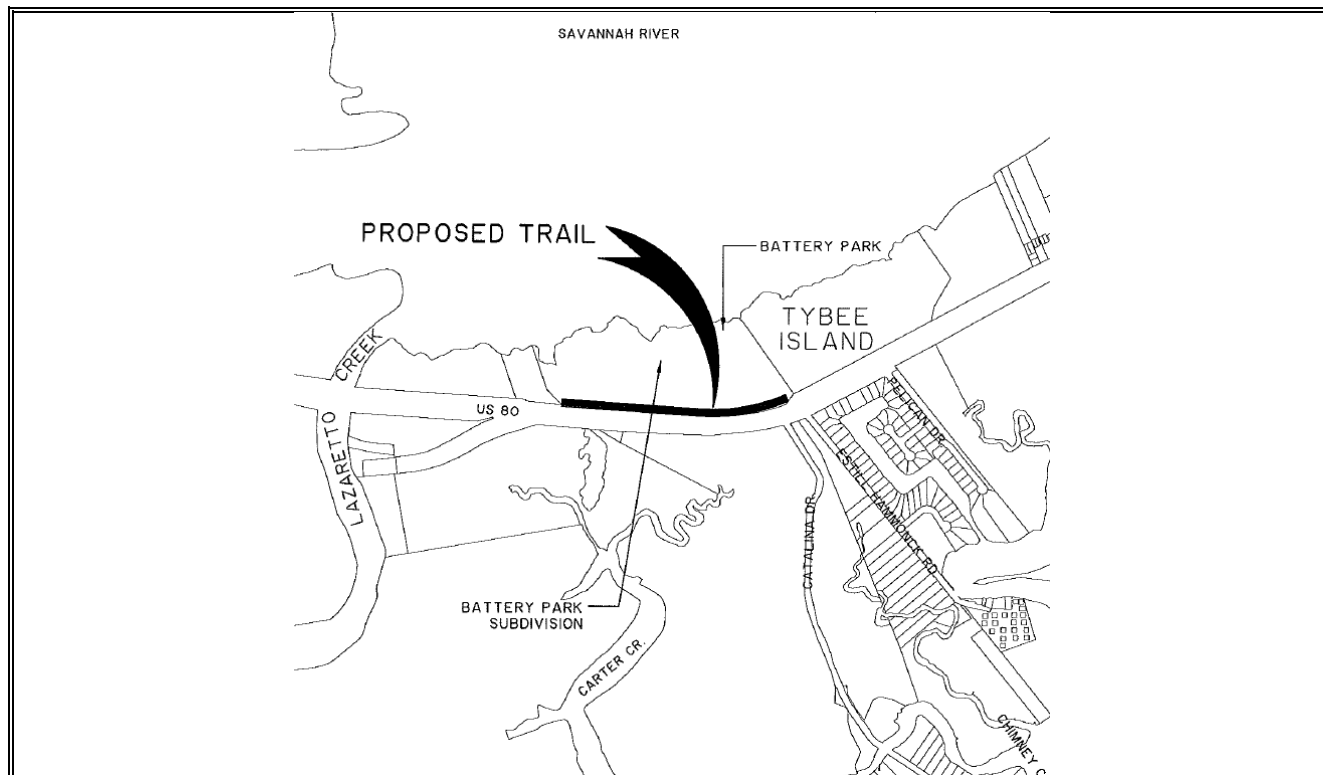


Revised Project Page as of June 2015

COASTAL REGION METROPOLITAN PLANNING ORGANIZATION FY 2015 - 2018 TRANSPORTATION IMPROVEMENT PROGRAM

MARSH HEN TRAIL FM E OF OLD HWY 80 TO BATTERY DR - PHASE II				P.I. #: 0013271		
				TIP #: 2015-TAP-1		
				COUNTY: CHATHAM		
				PROJ. #:		
				FUND: M301		
				GDOT DISTRICT: 5		
PROJECT DESCRIPTION: The project of approximately 0.4 mile will create a shared use path on the former Marsh Hen railroad bed, along the north edge of US 80, from just east of Highway 80 to Battery Dr. This will provide an extension of a Phase I project, from Battery Dr. to Byers St., which was funded through Transportation Enhancement award and local match.		TRAFFIC VOL. 2005 AADT:		2030:		CONG. DISTRICT: 1
NO. OF LANES EXISTING:		PLANNED:		RC:		
LOCAL ROAD #:		STATE/US ROAD #:			LENGTH (MI): 0.40	
COMMENTS/REMARKS: This project is consistent with the Non-motorized Transportation Plan and the CORE MPO US 80 Bridges Study. Along with bike/ped accommodations on the Lazaretto Bridge replacement, also recommended in the latter study, the Marsh Hen Trail will provide an off-road connection from Tybee Island onto McQueen’s Island. That bridge replacement project is in the scoping phase. GDOT oversight programmed in FY 2015 is being moved to FY 2016 and CST programmed in FY 2015 is being moved to FY 2018.						
PROJECT PHASE	\$ SOURCE	FY 2015	FY 2016	FY 2017	FY 2018	TOTAL
GDOT Oversight	Federal/Local	\$0	\$7,000	\$0	\$0	\$7,000
PRELIM. ENGR.	Local	\$0	\$0	\$0	\$0	\$0
RIGHT-OF-WAY	Local	\$0	\$0	\$0	\$0	\$0
CONSTRUCTION	Federal/Local	\$0	0	\$0	\$161,453	\$161,453
PROJECT COST		\$0	\$7,000	\$0	\$161,453	\$168,453
FEDERAL COST		\$0	\$5,600	\$0	\$129,162	\$134,762
STATE COST		\$0	\$0	\$0	\$0	\$0
LOCAL COST		\$0	\$1,400	\$0	\$32,291	\$33,691

PROJECT LOCATION

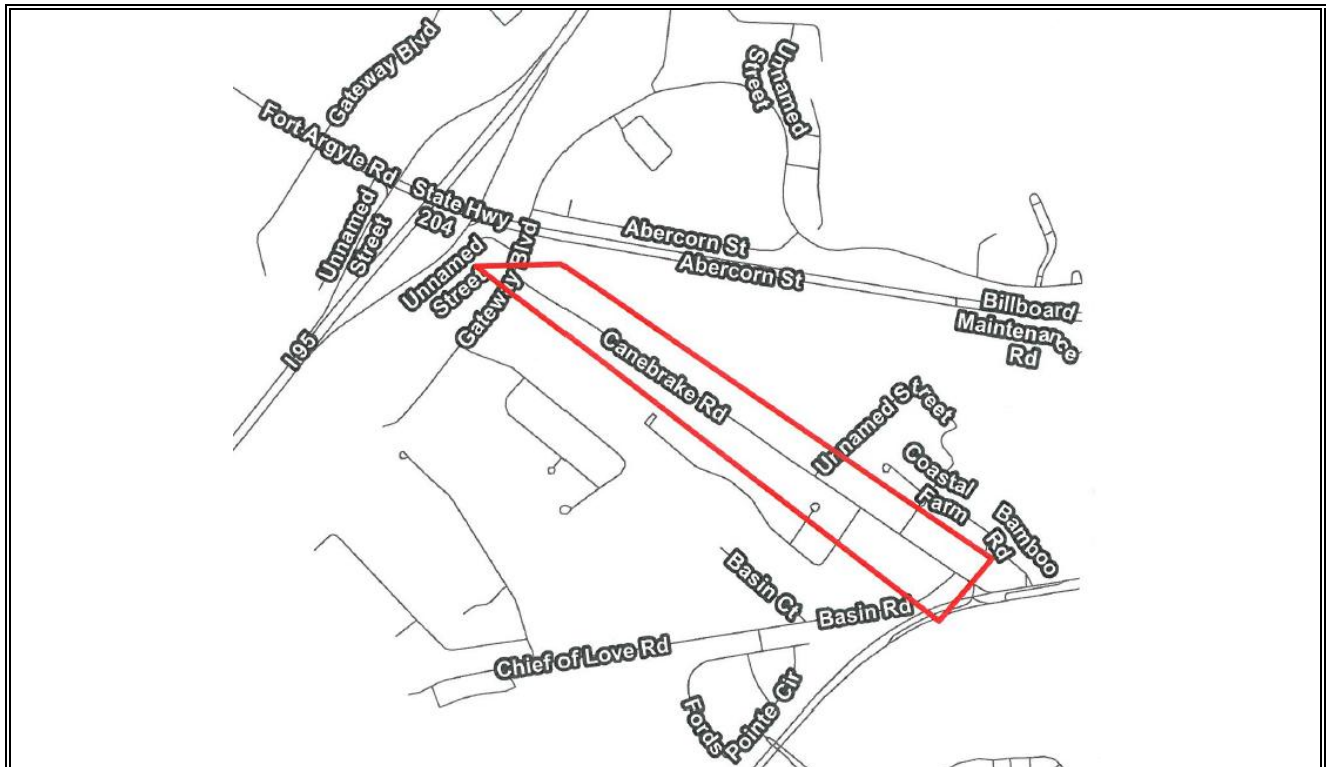


Current Project Page

COASTAL REGION METROPOLITAN PLANNING ORGANIZATION FY 2015 - 2018 TRANSPORTATION IMPROVEMENT PROGRAM

CANEBRAKE ROAD IMPROVEMENT PROJECT FROM GATEWAY BLVD. TO BASIN RD.					P.I. #:		0013272	
					TIP #:		2015-TAP-2	
					COUNTY:		CHATHAM	
					PROJ. #:			
					FUND:		M301, Local	
					GDOT DISTRICT:		5	
PROJECT DESCRIPTION: The proposed project is an extension of the Coastal Georgia Greenway that will provide for a 10-ft shared use path on the southside of Canebrake Road and a 5-ft sidewalk on the north side of Canebrake Road. The shared-use path will connect to the existing shared-use path along Basin Road, which is also part of the Coastal Georgia Greenway.					CONG. DISTRICT:		1	
					RC:			
TRAFFIC VOL. 2005 AADT:			2030:					
NO. OF LANES EXISTING: 2			PLANNED: 2					
LOCAL ROAD #:			STATE/US ROAD #:			LENGTH (MI): 0.78		
COMMENTS/REMARKS: This project is consistent with the Non-motorized Transportation Plan.								
PROJECT PHASE	\$ SOURCE	FY 2015	FY 2016	FY 2017	FY 2018	TOTAL		
GDOT Oversight	Federal/Local	11,000	\$0	\$0	\$0	\$11,000		
PRELIM. ENGR.	Local	\$300,000	\$0	\$0	\$0	\$300,000		
RIGHT-OF-WAY	Local	\$0	\$200,000	\$0	\$0	\$200,000		
UTILITY	Local	\$0	\$0	\$50,000	\$0	\$50,000		
CONSTRUCTION	Federal/Local	\$0	\$0	\$1,100,000	\$0	\$1,100,000		
PROJECT COST		\$311,000	\$200,000	\$1,150,000	\$0	\$1,661,000		
FEDERAL COST		\$8,800	\$0	\$510,186	\$0	\$518,986		
STATE COST		\$0	\$0	\$0	\$0	\$0		
LOCAL COST		\$302,200	\$200,000	\$639,814	\$0	\$1,142,014		

PROJECT LOCATION

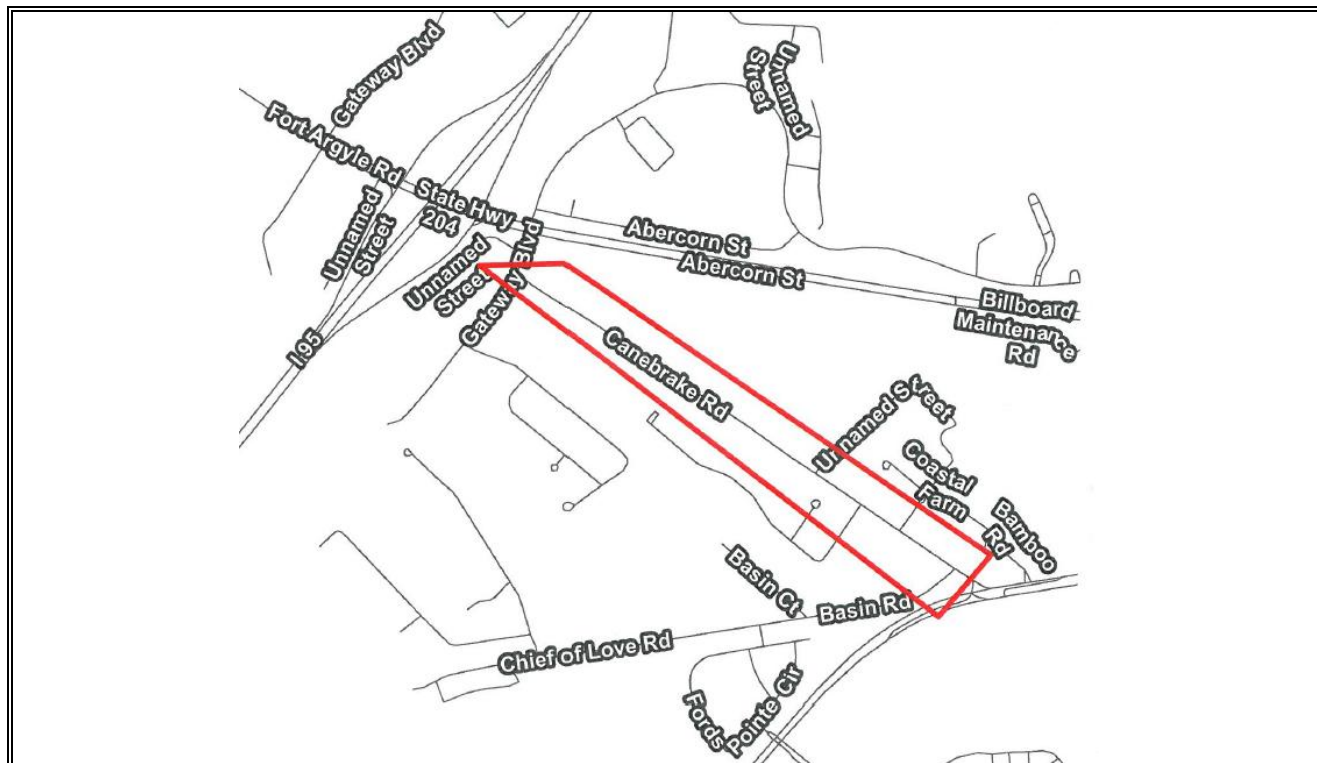


Revised Project Page as of June 2015

COASTAL REGION METROPOLITAN PLANNING ORGANIZATION FY 2015 - 2018 TRANSPORTATION IMPROVEMENT PROGRAM

PROJECT DESCRIPTION: The proposed project is an extension of the Coastal Georgia Greenway that will provide for a 10-ft shared use path on the southside of Canebrake Road and a 5-ft sidewalk on the north side of Canebrake Road. The shared-use path will connect to the existing shared-use path along Basin Road, which is also part of the Coastal Georgia Greenway.				P.I. #:		0013272	
				TIP #:		2015-TAP-2	
				COUNTY:		CHATHAM	
				PROJ. #:			
				FUND:		Local	
				GDOT DISTRICT:		5	
TRAFFIC VOL. 2005 AADT:		2030:		CONG. DISTRICT:		1	
NO. OF LANES EXISTING:		2	PLANNED:		2	RC:	
LOCAL ROAD #:		STATE/US ROAD #:			LENGTH (MI):		0.78
COMMENTS/REMARKS: This project was programmed with TAP funds and local funds but Chatham County is implementing it with local SPLOST funds. The project is thus being deleted from the TIP since TIP only lists projects programmed with federal funds or projects expecting to receive federal funds.							
PROJECT PHASE	\$ SOURCE	FY 2015	FY 2016	FY 2017	FY 2018	TOTAL	
GDOT Oversight	NA	\$0	\$0	\$0	\$0	\$0	
PRELIM. ENGR.	NA	\$0	\$0	\$0	\$0	\$0	
RIGHT-OF-WAY	NA	\$0	\$0	\$0	\$0	\$0	
UTILITY	NA	\$0	\$0	\$0	\$0	\$0	
CONSTRUCTION	NA	\$0	\$0	\$0	\$0	\$0	
PROJECT COST		\$0	\$0	\$0	\$0	\$0	
FEDERAL COST		\$0	\$0	\$0	\$0	\$0	
STATE COST		\$0	\$0	\$0	\$0	\$0	
LOCAL COST		\$0	\$0	\$0	\$0	\$0	

PROJECT LOCATION

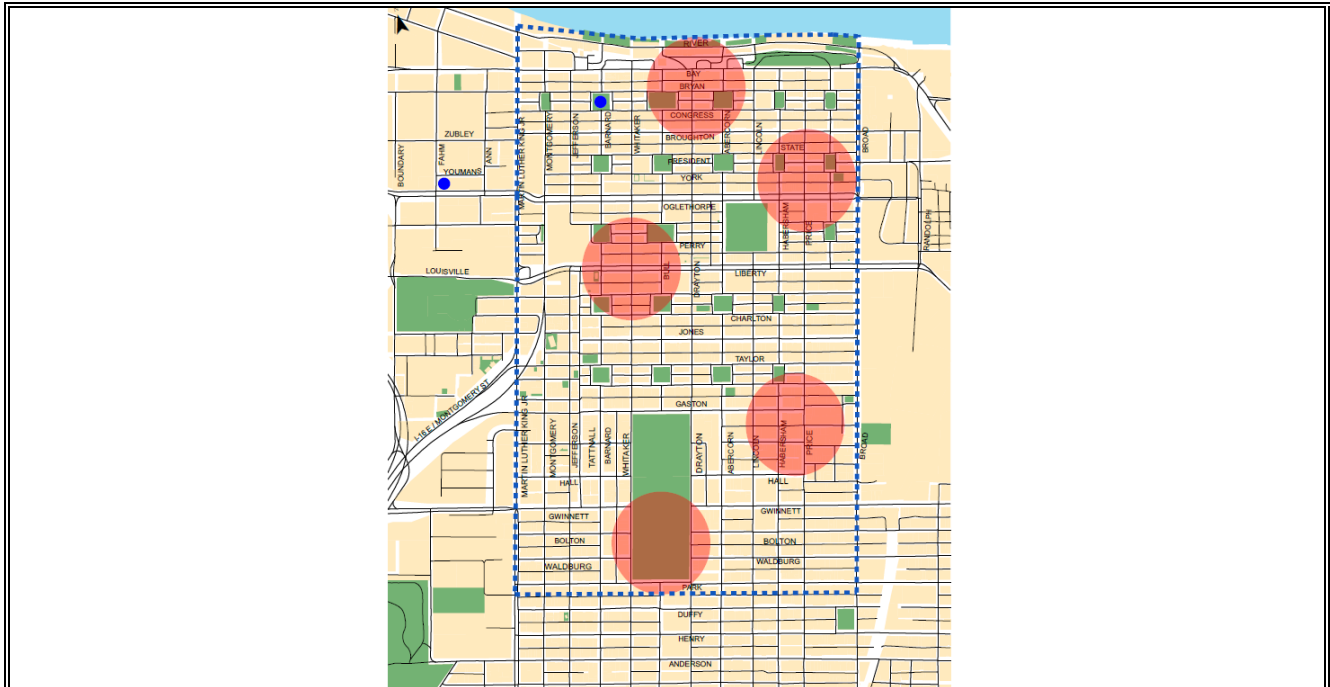


Current Project Page

COASTAL REGION METROPOLITAN PLANNING ORGANIZATION FY 2015 - 2018 TRANSPORTATION IMPROVEMENT PROGRAM

PROJECT DESCRIPTION: The “CAT Bike” bike sharing system will be expanded to include five additional stations and 40 more bikes, to build upon the existing two stations and 16 bikes. The stations will be placed approximately ¼ mile apart in visible, walkable locations within the area bounded by Park Ave., River St., MLK, Jr. Blvd, and West Broad St. This area includes significant trip origins and destinations and connections to other modes of transportation. Operation of the system is funded through CAT’s budget.					P.I. #: 0013273	
					TIP #: 2015-TAP-3	
					COUNTY: CHATHAM	
					PROJ. #:	
					FUND: M301	
					GDOT DISTRICT: 5	
TRAFFIC VOL. 2005 AADT:			2030:		CONG. DISTRICT: 1	
NO. OF LANES EXISTING:			PLANNED:		RC:	
LOCAL ROAD #:		STATE/US ROAD #:			LENGTH (MI): NA	
COMMENTS/REMARKS: This project is consistent with the Non-motorized Transportation Plan. Station locations shown on the map are approximate at this time. CAT is coordinating with the City of Savannah on station locations. Project costs include only capital costs (stations and bicycles) and installation costs. Federal/local split is 80/20 on each of the two phases.						
PROJECT PHASE	\$ SOURCE	FY 2015	FY 2016	FY 2017	FY 2018	TOTAL
GDOT Oversight	Federal/Local	7,000	\$0	\$0	\$0	7,000
PRELIM. ENGR.	Local	\$0	\$0	\$0	\$0	\$0
RIGHT-OF-WAY	Local	\$0	\$0	\$0	\$0	\$0
CAPITAL	Federal/Local	\$208,900	\$0	\$0	\$0	\$208,900
CONSTRUCTION	Federal/Local	\$9,910	\$0	\$0	\$0	\$9,910
PROJECT COST		\$225,810	\$0	\$0	\$0	\$225,810
FEDERAL COST		\$180,648	\$0	\$0	\$0	\$180,648
STATE COST		\$0	\$0	\$0	\$0	\$0
LOCAL COST		\$45,162	\$0	\$0	\$0	\$45,162

PROJECT LOCATION

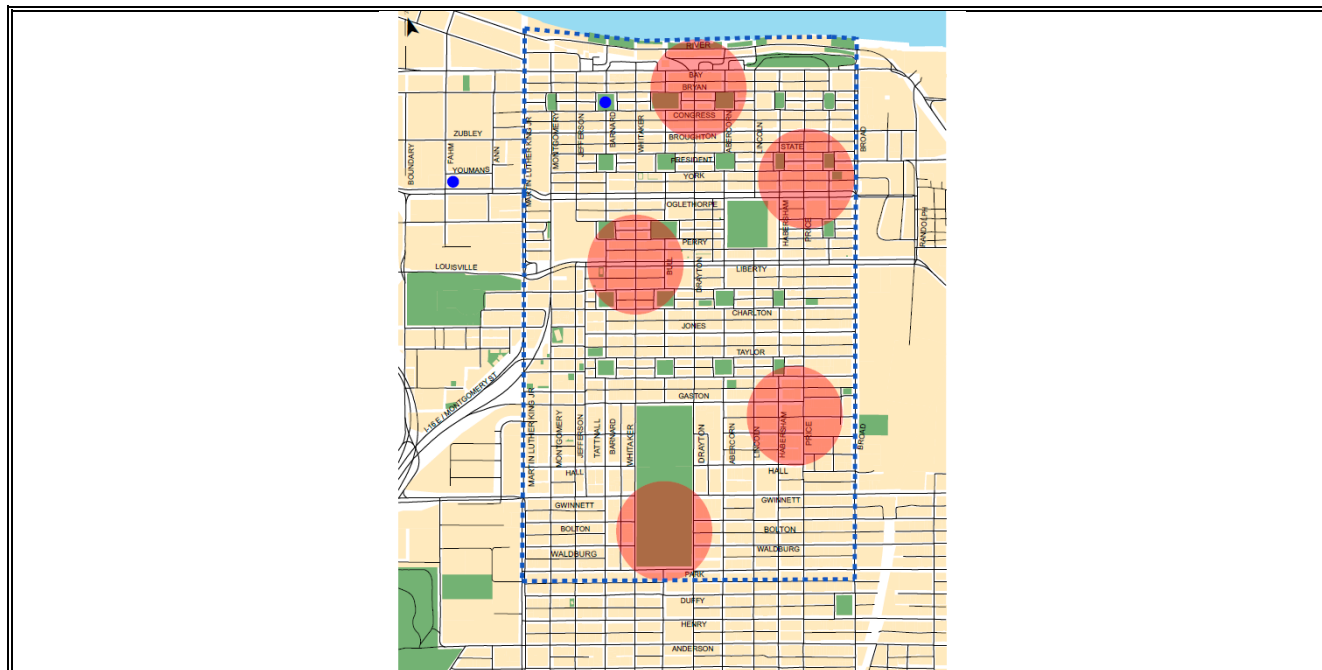


Revised Project Page as of June 2015

COASTAL REGION METROPOLITAN PLANNING ORGANIZATION FY 2015 - 2018 TRANSPORTATION IMPROVEMENT PROGRAM

PROJECT DESCRIPTION: The “CAT Bike” bike sharing system will be expanded to include five additional stations and 40 more bikes, to build upon the existing two stations and 16 bikes. The stations will be placed approximately ¼ mile apart in visible, walkable locations within the area bounded by Park Ave., River St., MLK, Jr. Blvd, and West Broad St. This area includes significant trip origins and destinations and connections to other modes of transportation. Operation of the system is funded through CAT’s budget.				P.I. #: 0013273		
				TIP #: 2015-TAP-3		
				COUNTY: CHATHAM		
				PROJ. #:		
				FUND: M301		
				GDOT DISTRICT: 5		
TRAFFIC VOL. 2005 AADT:		2030:		CONG. DISTRICT: 1		
NO. OF LANES EXISTING:		PLANNED:		RC:		
LOCAL ROAD #:		STATE/US ROAD #:		LENGTH (MI): NA		
COMMENTS/REMARKS: This project is consistent with the Non-motorized Transportation Plan. Station locations shown on the map are approximate at this time. CAT is coordinating with the City of Savannah on station locations. Project costs include only capital costs (stations and bicycles) and installation costs. Federal/local split is 80/20 on each of the two phases. All of the phases programmed in FY 2015 are being moved to FY 2016 due to MAP-21 funding uncertainties.						
PROJECT PHASE	\$ SOURCE	FY 2015	FY 2016	FY 2017	FY 2018	TOTAL
GDOT Oversight	Federal/Local	\$0	7,000	\$0	\$0	7,000
PRELIM. ENGR.	Local	\$0	\$0	\$0	\$0	\$0
RIGHT-OF-WAY	Local	\$0	\$0	\$0	\$0	\$0
CAPITAL	Federal/Local	\$0	\$208,900	\$0	\$0	\$208,900
CONSTRUCTION	Federal/Local	\$0	\$9,910	\$0	\$0	\$9,910
PROJECT COST		\$0	\$225,810	\$0	\$0	\$225,810
FEDERAL COST		\$0	\$180,648	\$0	\$0	\$180,648
STATE COST		\$0	\$0	\$0	\$0	\$0
LOCAL COST		\$0	\$45,162	\$0	\$0	\$45,162

PROJECT LOCATION

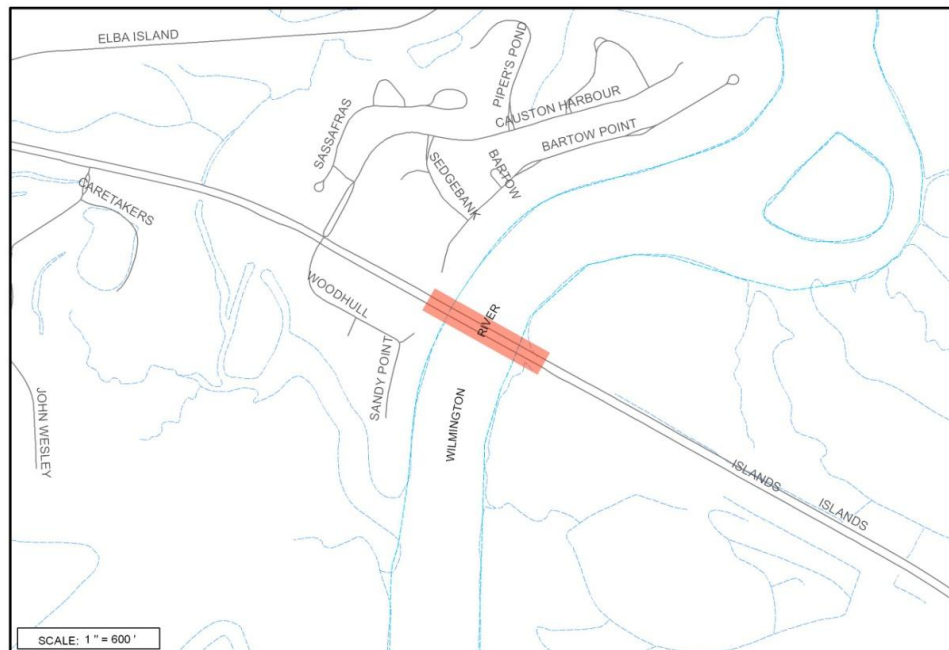


Current Project Page

COASTAL REGION METROPOLITAN PLANNING ORGANIZATION FY 2015 - 2018 TRANSPORTATION IMPROVEMENT PROGRAM

CR 787/ISLANDS EXPRESSWAY @ WILMINGTON RIVER/BASCULE BRIDGE PROJECT DESCRIPTION: Replace the bascule bridge at Islands Expressway/Wilmington River with a high-level fixed bridge.				P.I. #: 0007128			
				TIP #: 2005-H-03			
				COUNTY: CHATHAM			
				PROJ. #: CSBRG-0007-00(128)			
				FUND: Local			
				GDOT DISTRICT: 5			
TRAFFIC VOL. 2005 AADT:		2030:		CONG. DISTRICT: 1			
NO. OF LANES EXISTING: 4		PLANNED: 4		RC: CG			
LOCAL ROAD #:		STATE/US ROAD #:			LENGTH (MI): 1.2		
COMMENTS/REMARKS: Chatham County is the project sponsor. A concept meeting was held in 2007. The consultant has analyzed the alternatives and GDOT selected Alternative 8. The revised concept report was approved on March 9, 2012. Design is on-going. \$1 million of MPO sub-allocation of ARRA funds were authorized to fund PE in FY 2010. Right-of-way is the local responsibility and programmed in 2015. Construction is in long range.							
PROJECT PHASE	\$ SOURCE	FY 2015	FY 2016	FY 2017	FY 2018	TOTAL	
PRELIM. ENGR.	Authorized	\$0	\$0	\$0	\$0	\$0	
RIGHT-OF-WAY	Local	\$119,917	\$0	\$0	\$0	\$119,917	
UTILITY	Local	\$0	\$0	\$0	\$0	\$0	
CONSTRUCTION	Federal/State	\$0	\$0	\$0	\$0	\$0	
PROJECT COST		\$119,917	\$0	\$0	\$0	\$119,917	
FEDERAL COST		\$0	\$0	\$0	\$0	\$0	
STATE COST		\$0	\$0	\$0	\$0	\$0	
LOCAL COST		\$119,917	\$0	\$0	\$0	\$119,917	

PROJECT LOCATION



CHATHAM COUNTY SAVANNAH
METROPOLITAN PLANNING COMMISSION
1000 N. WILKINSON ST., SAVANNAH, GA 31404-1000
404.535.1000 • FAX 404.535.1001 • WWW.CHATHAMCOUNTYGA.COM



**CR 787/Islands Expressway @
WilmingtonRiver/Bascule Bridge**

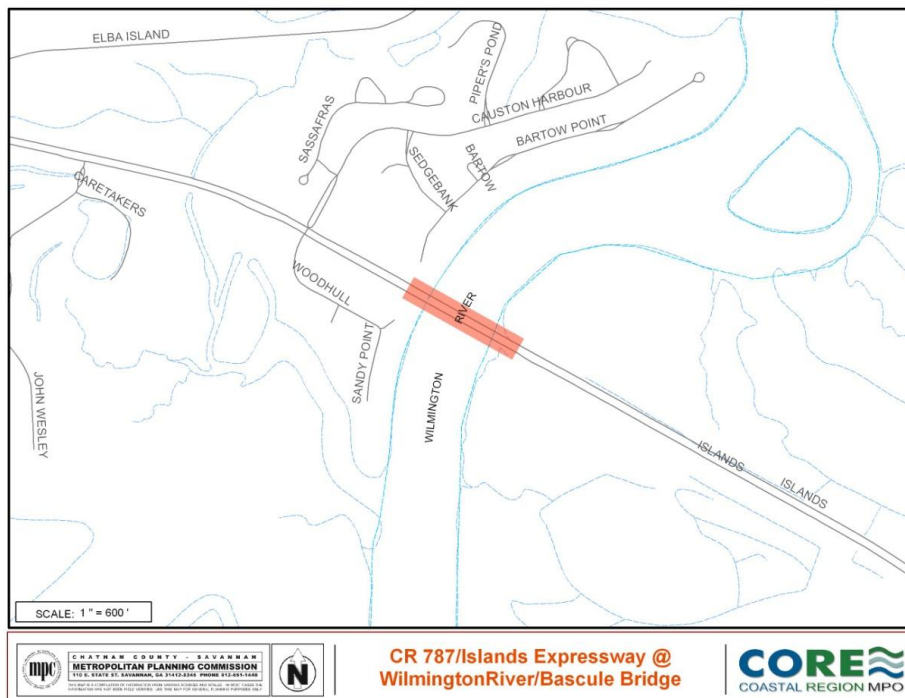


Revised Project Page as of June 2015

COASTAL REGION METROPOLITAN PLANNING ORGANIZATION FY 2015 - 2018 TRANSPORTATION IMPROVEMENT PROGRAM

PROJECT DESCRIPTION: Replace the bascule bridge at Islands Expressway/Wilmington River with a high-level fixed bridge.				P.I. #: 0007128			
				TIP #: 2005-H-03			
				COUNTY: CHATHAM			
				PROJ. #: CSBRG-0007-00(128)			
				FUND: Local			
				GDOT DISTRICT: 5			
TRAFFIC VOL. 2005 AADT:		2030:		CONG. DISTRICT: 1			
NO. OF LANES EXISTING: 4		PLANNED: 4		RC: CG			
LOCAL ROAD #:		STATE/US ROAD #:			LENGTH (MI): 1.2		
COMMENTS/REMARKS: Chatham County is the project sponsor. A concept meeting was held in 2007. The consultant has analyzed the alternatives and GDOT selected Alternative 8. The revised concept report was approved on March 9, 2012. Design is on-going. \$1 million of MPO sub-allocation of ARRA funds were authorized to fund PE in FY 2010. Right-of-way is the local responsibility and programmed in 2015. Based on the development schedule, the ROW phase is being moved to FY 2016. Construction is in long range.							
PROJECT PHASE	\$ SOURCE	FY 2015	FY 2016	FY 2017	FY 2018	TOTAL	
PRELIM. ENGR.	Authorized	\$0	\$0	\$0	\$0	\$0	
RIGHT-OF-WAY	Local	\$0	\$119,917	\$0	\$0	\$119,917	
UTILITY	Local	\$0	\$0	\$0	\$0	\$0	
CONSTRUCTION	Federal/State	\$0	\$0	\$0	\$0	\$0	
PROJECT COST		\$0	\$119,917	\$0	\$0	\$119,917	
FEDERAL COST		\$0	\$0	\$0	\$0	\$0	
STATE COST		\$0	\$0	\$0	\$0	\$0	
LOCAL COST		\$0	\$119,917	\$0	\$0	\$119,917	

PROJECT LOCATION



Addendum to 2040 MTP							
June 2015							
PI#	Project Name	Phase	Current MTP Cost Band	Current Cost	Phase	New MTP Cost Band	New Cost
0002913	SR 25 CONN/BAY STREET FROM I-516 TO THE BAY STREET VIADUCT	PE, CST	One (2015- 2020)	\$10,380,910	PE, CST	One (2015- 2020)	\$12,779,089
0011744	I-16 @ MONTGOMERY ST & @ MLK JR BLVD - RAMP & OVERPASS	PE	One (2015- 2020)	\$1,100,000	PE	One (2015- 2020)	\$741,551

Current Transit Project Pages

CAPITAL SCHEDULE FOR CHATHAM AREA TRANSIT AUTHORITY							
FUNDING	DESCRIPTION	UNIT COST	FY2015	FY2016	FY2017	FY2018	TOTAL
Section 5307	Preventive Maintenance	VARIES	1,500,000	1,293,712	1,332,523	1,372,499	5,498,734
Section 5307	Operating Assistance	VARIES	3,484,102	0	0	0	3,484,102
Section 5307	Safety and Security	VARIES	0	89,427	92,109	94,873	276,409
Section 5307	Facilities Enhancement	VARIES	0	1,660,725	1,710,546	1,761,863	5,133,134
Section 5307	ITS	VARIES	240,063	265,440	273,403	281,606	1,160,512
Section 5307	Passenger Amenities	VARIES	437,500	273,984	282,204	290,670	1,284,358
Section 5307	Project Administration	VARIES	0	51,500	53,045	54,636	159,181
Section 5307	Vehicle Purchases	VARIES	0	788,948	812,617	836,995	2,438,560
Section 5307	Planning	VARIES	0	154,500	159,135	163,909	477,544
Section 5307	Transit Center	VARIES	0	77,250	79,568	81,955	238,772
	PROJECT COST		5,661,665	4,655,486	4,795,150	4,939,005	20,051,306
	FEDERAL COST		3,532,113	3,724,389	3,836,120	3,951,204	15,043,826
	STATE COST		1,064,776	465,549	479,515	493,900	2,503,740
	LOCAL COST		1,064,776	465,549	479,515	493,900	2,503,740
	DOT DISTRICT # 5		CONG.DIST. 1		CRC		CG

STATE OF GOOD REPAIR 5337/(MAP-21) SCHEDULE FOR CHATHAM AREA TRANSIT AUTHORITY							
FUNDING	DESCRIPTION	UNIT COST	FY2015	FY2016	FY2017	FY2018	TOTAL
Section 5337	State of Good Repair	VARIES	444,614	155,338	159,998	164,798	924,748
	PROJECT COST		444,614	155,338	159,998	164,798	924,748
	FEDERAL COST		355,691	124,270	127,999	131,839	739,799
	STATE COST		44,461	15,534	16,000	16,480	92,475
	LOCAL COST		44,461	15,534	16,000	16,480	92,475
	DOT DISTRICT # 5		CONG.DIST. 1		CRC		CG

BUS AND BUS FACILITY 5339/(MAP-21) SCHEDULE FOR CHATHAM AREA TRANSIT AUTHORITY							
FUNDING	DESCRIPTION	UNIT COST	FY2015	FY2016	FY2017	FY2018	TOTAL
Section 5339	Bus and Bus Facility	VARIES	1,441,227	506,653	521,853	537,508	3,007,241
	PROJECT COST		1,441,227	506,653	521,853	537,508	3,007,241
	FEDERAL COST		1,152,982	405,322	417,482	430,006	2,405,792
	STATE COST		144,123	50,665	52,185	53,751	300,724
	LOCAL COST		144,123	50,665	52,185	53,751	300,724
	DOT DISTRICT # 5		CONG.DIST. 1		CRC		CG

FTA-FBD Discretionary Section 5307

FTA-FBD (80/20) (Section 5307)							
FUNDING	DESCRIPTION	UNIT COST	FY2015	FY2016	FY2017	FY2018	TOTAL
FTA-FBD (Section 5307)	The Chatham Area Transit Authority will receive funding to renovate up to three ferry landings	VARIES	\$468,000	\$0	\$0	\$0	\$468,000
	PROJECT COST		\$468,000	\$0	\$0	\$0	\$0
	FEDERAL COST		\$374,400	\$0	\$0	\$0	\$0
	STATE COST		\$46,800	\$0	\$0	\$0	\$0
	LOCAL COST		\$46,800	\$0	\$0	\$0	\$0
	DOT DIST #5		CONG DIST. 1	CRC CG			

Revised Transit Project Pages as of June 2015

CAPITAL SCHEDULE FOR CHATHAM AREA TRANSIT AUTHORITY							
Funding	Description	Unit Cost	FY2015	FY2016	FY2017	FY2018	Total
	STIP#						
Section 5307	Preventive Maintenance	VARIES	0	2,793,712	1,332,523	1,372,499	5,498,734
Section 5307	Operating Assistance	VARIES	0	3,484,102	0	0	3,484,102
Section 5307	Safety and Security	VARIES	0	89,427	92,109	94,873	276,409
Section 5307	Facilities Enhancement	VARIES	0	1,660,725	1,710,546	1,761,863	5,133,134
Section 5307	ITS	VARIES	0	505,503	273,403	281,606	1,060,512
Section 5307	Passenger Amenities	VARIES	0	711,484	282,204	290,670	1,284,358
Section 5307	Project Administration	VARIES	0	51,500	53,045	54,636	159,181
Section 5307	Vehicle Purchases	VARIES	0	788,948	812,617	836,995	2,438,560
Section 5307	Planning	VARIES	0	154,500	159,135	163,909	477,544
Section 5307	Transit Center	VARIES	0	77,250	79,568	81,955	238,772
	PROJECT COST		0	10,317,151	4,795,150	4,939,005	20,051,306
	FEDERAL COST		0	8,253,721	3,836,120	3,951,204	16,041,045
	STATE COST		0	1,031,715	479,515	493,900	2,005,131
	LOCAL COST		0	1,031,715	479,515	493,900	2,005,131
	DOT DIST #5		CONG DIST. 1		CRC		

STATE OF GOOD REPAIR 5337(MAP-21) SCHEDULE FOR CHATHAM AREA TRANSIT AUTHORITY							
FUNDING	DESCRIPTION	UNIT COST	FY2015	FY2016	FY2017	FY2018	TOTAL
Section 5337	State of Good Repair	VARIES	0	599,952	159,998	164,798	924,748
	PROJECT COST		0	599,952	159,998	164,798	924,748
	FEDERAL COST		0	479,962	127,999	131,839	739,799
	STATE COST		0	59,995	16,000	16,480	92,475
	LOCAL COST		0	59,995	16,000	16,480	92,475
	DOT DISTRICT # 5		CONG.DIST. 1	CRC		CG	

BUS AND BUS FACILITY 5339/(MAP-21)CHATHAM AREA TRANSIT AUTHORITY							
FUNDING	DESCRIPTION	UNIT COST	FY2015	FY2016	FY2017	FY2018	TOTAL
Section 5339	Bus and Bus Facility	VARIES	949,330	998,549	521,853	537,508	3,007,240
	PROJECT COST		949,330	998,549	521,853	537,508	3,007,240
	FEDERAL COST		759,464	798,839	417,482	430,006	2,405,792
	STATE COST		94,933	99,855	52,185	53,751	300,724
	LOCAL COST		94,933	99,855	52,185	53,751	300,724
	DOT DISTRICT # 5		CONG.DIST. 1		CRC	CG	

FTA-FBD (80/20)(Section 5307)							
FUNDING	DESCRIPTION	UNIT COST	FY2015	FY2016	FY2017	FY2018	TOTAL
FTA-FBD (Section 5307)	The Chatham Area Transit Authority will receive funding to renovate up to three ferry landings	VARIES	0	468,000	0	0	468,000
	PROJECT COST		0	468,000	0	0	468,000
	FEDERAL COST		0	374,400	0	0	374,400
	STATE COST		0	46,800	0	0	46,800
	LOCAL COST		0	46,800	0	0	46,800
	DOT DISTRICT #	5	CONG.DIST. 1		CRC		CG

AFFIDAVIT OF PUBLICATION
SAVANNAH MORNING NEWS

STATE OF GEORGIA
COUNTY OF CHATHAM

Personally appeared before me, Alaina Fincher, to me known,
who being sworn, deposes and says:

That he/she is the authorized agent of Southeastern Newspapers
Company, LLC d.b.a. Savannah Morning News, a Georgia corporation,
doing business in Chatham County, Georgia as a daily newspaper published
in said county;

That he/she is authorized to make affidavits of publication on behalf
of said company;

That said newspaper is of general circulation in said county
and in the area adjacent thereto;

That said newspaper is the legal organ for publication
in Chatham County, Georgia

That he/she has reviewed the regular editions of the
Savannah Morning News, published on:

June 7, 2015 _____, 2015,
_____, 2015, _____, 2015,

and finds that the following advertisement, to-wit:

June, 2015
**PUBLIC NOTICE FOR TIP
AMENDMENTS**
The Coastal Region Metropolitan
Planning Organization (CORE
MPO), the transportation planning
agency for the Savannah urbanized
area, is requesting the public to
review and provide comments on
proposed amendments to the FY
2015 - 2018 Transportation
Improvement Program (TIP). The
TIP is the short-term programming
document that lists transportation
improvement projects to receive
funding in the next four years. A
report providing details of the
proposed TIP amendments is
available for review at the
Chatham County public libraries,
the Chatham County-Savannah
Metropolitan Planning Commission
(MPC) office, the MPC website at
<http://www.thempc.org/transportation.htm>, and other public review
agencies. Any changes to the
report will be posted on the
website.
The comment period starts on June
9, 2015 and written comments on
the proposed TIP amendments will
be accepted until close of business
on June 23, 2015. Please send your
comments to Wykoda Wang,
Metropolitan Planning
Commission, 110 E. State Street,
Savannah, GA 31401, or via email
at wwang@thempc.org.
CORE MPO will host two public
hearings for the proposed TIP
amendments in June 2015 in
conjunction with the Citizens
Advisory Committee and CORE
MPO Board meetings. Meeting
times and locations are listed
below:
CORE MPO Citizens Advisory
Committee (CAC) Meeting
June 18, 2015
5:00 p.m.
MPC Arthur A. Mendonsa
Hearing Room
112 East State Street,
Savannah, GA 31401
CORE MPO Board Meeting
June 24, 2015
10:00 a.m.
MPC Arthur A. Mendonsa
Hearing Room
112 East State Street,
Savannah, GA 31401
For a complete list of public review
agencies or additional information
regarding the proposed
TIP amendments,
please call (912) 651-1466.

RECEIVED

JUN 12 2015

METROPOLITAN PLANNING
COMMISSION

Sworn to and subscribed before me

This 9 day of June, 2015

Alaina Fincher

(Deponent)

Eugene J. Cronk
Notary Public; Chatham County, Ga.

BOARD OF DIRECTORS

Dolores Engle, President
Charles Belin, PhD.
Christie Wallace Bergen
David Breithaupt
Michael Browning
Amelia Harper
William Haws
Patty Jensen
Nita Ann Klein
Kevin Klinkenberg
Gail Knopf
Kim Murray
Kat Nelson
Judd Sneirson
Dale Thorpe

DIRECTORS EMERITI

Lynda G. Beam
Page A. Hungerpiller
Hans Neuhauser
Suzanne H. Williams

STAFF

Karen Jenkins
Executive Director

COMMUNITY ADVISORS

Craig Barrow
Shannon Baughman
Marti Bockhold
Ann Fries
Jerry Holcomb
Martin Karp
Pat Monahan
Carol Moore

June 23, 2015

Ms. Wykoda Wang,
 Metropolitan Planning Commission,
 110 E. State Street, Savannah, GA 31401
 via email at wangw@thempc.org

Savannah Tree Foundation Comments on the CORE MPO's Revisions to the FY 2015-2018 Transportation Improvement Program

Savannah Tree Foundation (STF) is a not for profit organization whose mission is to preserve, protect and plant canopy trees in Chatham County, Georgia. The Savannah Tree Foundation encourages the use of Best Management Practices (BMP) for trees and urban forests in all construction and roadway projects. It is imperative that projects include provisions for proper tree protection to preserve existing trees and sufficient replanting when removal is the last possible option.

To fulfill today's community needs, a broader perspective of transportation improvement must be adopted. Complete street and context sensitive design are the operating standards for road enhancement and new construction programs.

Canopy trees provide life sustaining services such as oxygen and shade to our community and must be considered as infrastructure of the built environment. Engineers should use the resources of canopy trees to enhance projects rather than considering trees as a tear down expense.

New Road Construction: STF recommends that a tree inventory and assessment by a certified arborist be completed at the conceptual stage, or scoping phase, of a project. In the case of new road construction the roadway should consider the preservation and protection of stands of mature hardwoods. If a forested area must be traversed the road design should integrate preservation with a requirement for stringent protection for the healthiest part of the forest. The provisions for protection should be a line item in the project budget with stringent penalties imposed on the contractor for infringement on the protected areas.

Corridor improvements: STF recommends that a tree inventory and assessment by a certified arborist be completed during the study phase of the project, denoting the health and condition of the trees adjoining the proposed construction site. The study should indicate if adequate space is available for BMP tree protection methods to be installed and should indicate the provision that tree protection is part of the construction plan and is a line item in the budget. The ingress, egress and storage of equipment, the grading, filling and removal of

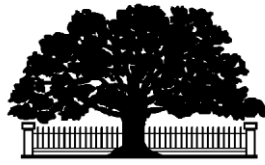
dirt, and the removal of construction materials should be accounted for in the construction plan at the time of bidding. Penalties should be imposed for inadequate protection of trees.

In the case of canopy loss due to a construction project a reforestation plan or a mitigation plan should be adopted for trees planted at the site or at a mitigation site.

Savannah Tree Foundation Comments on proposed Revisions to the FY 2015-2018 TIP

PI # 00074402 Gwinnett Street Improvements from I-16 to Stiles Ave

- During the Preliminary Engineering (PE) Phase an ISA certified arborist should evaluate the trees on the south side of Gwinnett (opposite the streets maintenance buildings) and determine the economic value of these mature trees that will likely be lost due to widening. The total value of all trees removed as a result of the project should be mitigated, by planting new trees in the project corridor.



SAVANNAH TREE FOUNDATION

Preserve. Protect. Plant. Since 1982.

- **The proposed “two foot grass strip” is not sufficient to accommodate trees.** This strip should be wide enough to plant trees. If both sides of the road cannot be made wide enough for a tree lawn, at the least one side (preferably the south side without the power lines) should be wide enough for a new tree lawn. Shade trees will shade the sidewalk and roadway and increase the likelihood of pedestrians using the new sidewalk.
- The mature oak tree at the SW Corner of Stiles & Gwinnett next to the bus stop should be preserved, and protected during any construction work on the sidewalk.
- Will the young tree adjacent to the gas station in the landscape bed be preserved? It appears to be an “ordinance tree” for this private property.
- Will the proposed 220’ long bridge over the canal sufficiently accommodate future pedestrians and bicyclists using a recreational pathway along the canal?

PI # 0002923 Bay Street Improvements from I-516 to Bay Street Viaduct

- The 18 mature live oak trees on the south side of Bay Street should be preserved, by properly protecting these trees during construction. Please see following iTree analysis of these trees.

PI # 521855 Ogeechee Road Widening from I-516 to Victory Drive

- The project budget should include planting trees in the 20 foot raised median.
- Shoulders should include space for trees.

PI # 00112758 I-16 @ I- 95 Interchange Reconstruction

- The project budget should include an assessment of trees that will be lost due to construction and a comparable budget for planting new trees.
- Shoulders should include space for trees.
- As a primary entrance to the Savannah/Chatham County community this interchange should be well landscaped and maintained.

PI # 0007259 CR 984/Jimmy Deloach Parkway @ SR 17 Interchange

- The project budget should include an assessment of trees that will be lost due to construction and a comparable budget for planting new trees.
- Shoulders should include space for trees.

PI # 522790 Jimmy Deloach Parkway Extension FM I – 16 to SR 26/US80

- The project budget should include an assessment of trees that will be lost due to construction and a comparable budget for planting new trees.
- Shoulders should include space for trees.

Should there be any questions about these comments, please do not hesitate to call the Savannah Tree Foundation office at 912-233-TREE (8733).

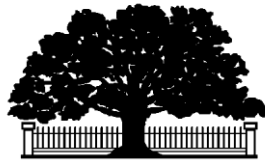
Kind regards,

Karen Jenkins
Executive Director



printed on 30%
post-consumer
recycled paper

3025 Bull Street • Savannah, Georgia 31405
912 233-TREE (8733) • 912 233-8799 fax
info@savannahtree.com • savannahtree.com



SAVANNAH TREE FOUNDATION

Preserve. Protect. Plant. Since 1982.

BOARD OF DIRECTORS

Dolores Engle, President
Charles Belin, PhD.
David Breithaupt
Michael Browning
Charlie Cortese
Susan Fearon
William Haws
Nita Ann Klein
Kevin Klinkenberg
Gail Knopf
Rebecca Moore
Kim Murray
Kat Nelson
Judd Sneirson
Dale Thorpe
Dana Yeckley

DIRECTORS EMERITI

Lynda G. Beam
Page A. Hungerpillar
Hans Neuhauser
Suzanne H. Williams

STAFF

Karen Jenkins
Executive Director

CONSULTING ARBORIST

Patrick Grant

COMMUNITY ADVISORS

Craig Barrow
Shannon Baughman
Marti Bockhold
Jeff Connaughton
Ann Fries
Jerry Holcomb
Martin Karp
Henry Minis
Pat Monahan
Carol Moore

To: Whom It May Concern (long Distribution list here)
From: Karen Jenkins, Executive Director
Savannah Tree Foundation
Re: **P.I. 0002923 - - SR 25 Connector/Bay Street from I-516 to the Bay Street Viaduct, or the "West Bay Street" project**

Date: June 25, 2015

The West Bay Street road reconstruction project puts in jeopardy the health and preservation of 18 mature live oak trees, on the south side of Bay Street between West and Ferrill Streets. These trees range from 18 to 41 inches in diameter. They constitute a valuable asset that provides significant economic, environmental, and aesthetic benefits to the City of Savannah.

The 18 trees have a replacement value of \$419,870*. These 18 trees also provide \$3,289 in annual benefits, including storm water mitigation, aesthetics, energy savings, carbon sequestration, and improved air quality. In 25 years, these annual benefits will increase to nearly \$36,000 a year.

In view of the asset value and annual benefit these live oaks provide, it is imperative that they are properly protected from damage during the road construction process that could seriously jeopardize their viability. Protective measures should include fencing as well as frequent watering to insure their survival during the construction process. Proper crown raising and root pruning prior to construction should be directed by an ISA Certified Arborist, who should also monitor these trees throughout the project and be consulted for proper positioning of protective fencing.

Standing sentry at the west entrance to the City of Savannah's Historic District, these preserved trees will welcome all who enter via West Bay Street. The trees are too important and too valuable to lose to poor construction practices. Please see that these trees receive the level of care they deserve.

Please see calculations on following page.



printed on 30%
post-consumer
recycled paper

3025 Bull Street • Savannah, Georgia 31405
912 233-TREE (8733) • 912 233-8799 fax
info@savannahtree.com • savannahtree.com



Preserve. Protect. Plant. Since 1982.

Calculations based on the 18 trees on the south side of West Bay Street, March 2014:

2014 Total Replacement Value \$ 419,870

2014 Annual Benefits

Storm water	\$	1,307	(217,896 gals. rainfall intercepted)
Aesthetics	\$	1,212	(increased property value)
Energy	\$	694	(reduced electricity/natural gas usage)
CO2	\$	133	(17,689 lbs. sequestered & production avoided)
Air Quality	\$	- 57	(pollution absorbed offset by BVOC emissions)

Total Annual Benefits \$ 3,289

Additional Benefit

Stored CO2 \$ 3.018 (402,394 lbs. currently stored in 18 trees)

Annual benefits will continue to increase in the future:

2039 (25 years) Annual Benefits \$ 35,892

2064 (50 years) Annual Benefits \$ 71,883

2089 (75 years) Annual Benefits \$ 107,939

*Note: All values & benefits were calculated using i-Tree Streets and i-Tree Design v6.0 (www.itreetools.org). These programs were developed under a cooperative initiative of the USDA Forestry Service, Davey Tree, the Arbor Day Foundation, the Society of Municipal Arborists (SMA), the International Society of Arboriculture (ISA), and Casey Trees.

If there are any questions on the value calculations of these trees, please do not hesitate to contact Karen Jenkins at the Savannah Tree Foundation, 912-233-8733.

Any questions on the protection and care of these trees should be directed to Mr. Gordon Denney, City of Savannah Park and Tree Department, 912-651-6610.



printed on 30%
post-consumer
recycled paper

3025 Bull Street • Savannah, Georgia 31405
912 233-TREE (8733) • 912 233-8799 fax
info@savannahtree.com • savannahtree.com