

Chatham County–Savannah MPC Stakeholder Committee Meeting #1

November 12, 2013



COASTAL REGION MPO

REGIONAL PARK + RIDE INITIATIVE

park. ride. relax.



Agenda

1. Introductions
2. Project Objectives and Scope
3. Regional Demographics
4. Regional Travel Patterns
5. Activity Center Work Force and Travel Patterns
6. Priority Corridors and Workplace Destinations
7. Existing GDOT Rideshare Lots
8. Initial Observations
9. Next Steps
10. Questions and Discussion

PROJECT OBJECTIVES AND SCOPE



Project Objectives

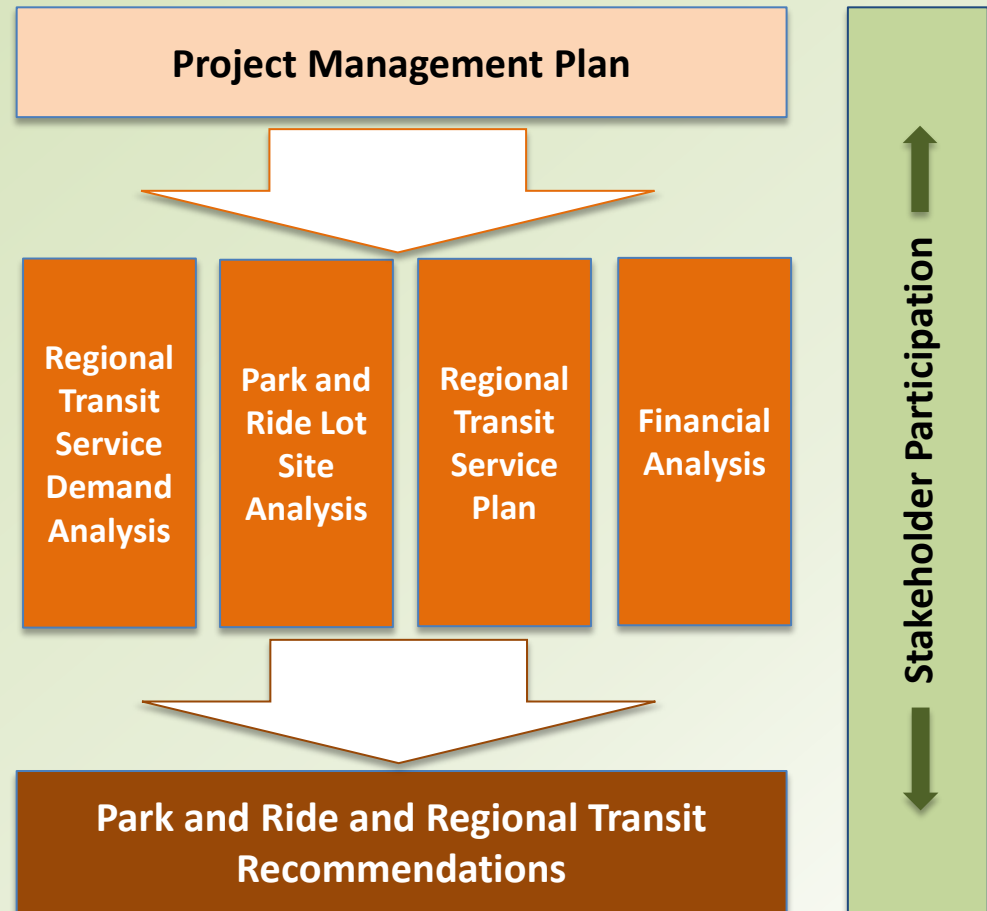
To accomplish:

- A **comprehensive evaluation** of
 - travel demand in commuter corridors
 - park & ride lot site evaluation
 - transit service needs
 - financial analysis and plan
- **Meaningful outreach** efforts that engages stakeholders
- A “**road map**” for advancing promising corridors

Project Approach

Ultimate Goal:

Preparing a “Road Map” for advancing park and ride lot development and services towards implementation



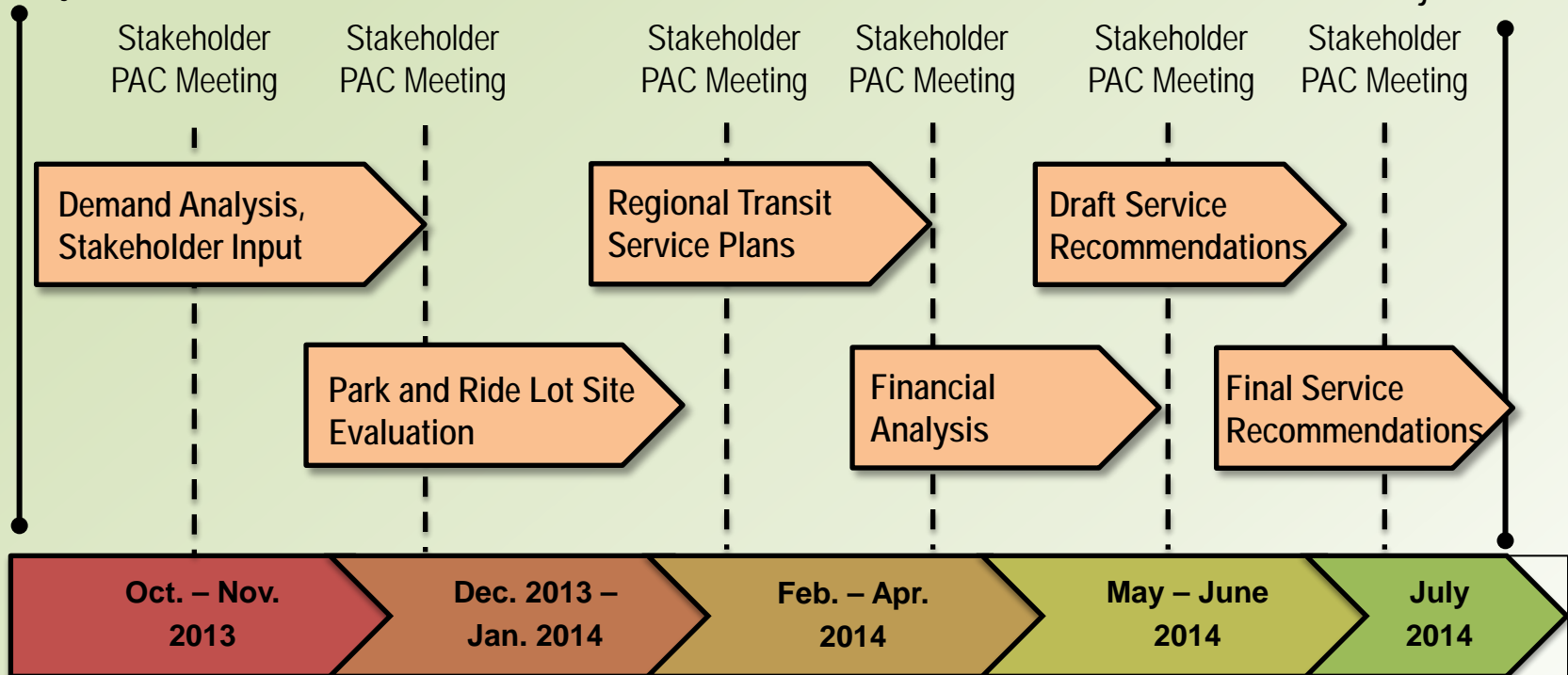
Stakeholder Participation

- **Relationship**
 - Six meetings throughout the project
 - Open door policy
- **Roles**
 - Provide additional data and information
 - Review and feedback throughout the process
- **Benefits**
 - Enhanced transportation options for your community
 - Advance mobility in the region

Project Schedule

Sept. 2013:
Start Project

July 2014:
Project Complete



REGIONAL DEMOGRAPHICS



Greater Savannah/Coastal Area

Georgia Counties

- Chatham
- Effingham
- Bryan
- Liberty
- Bulloch

South Carolina Counties

- Jasper
- Beaufort

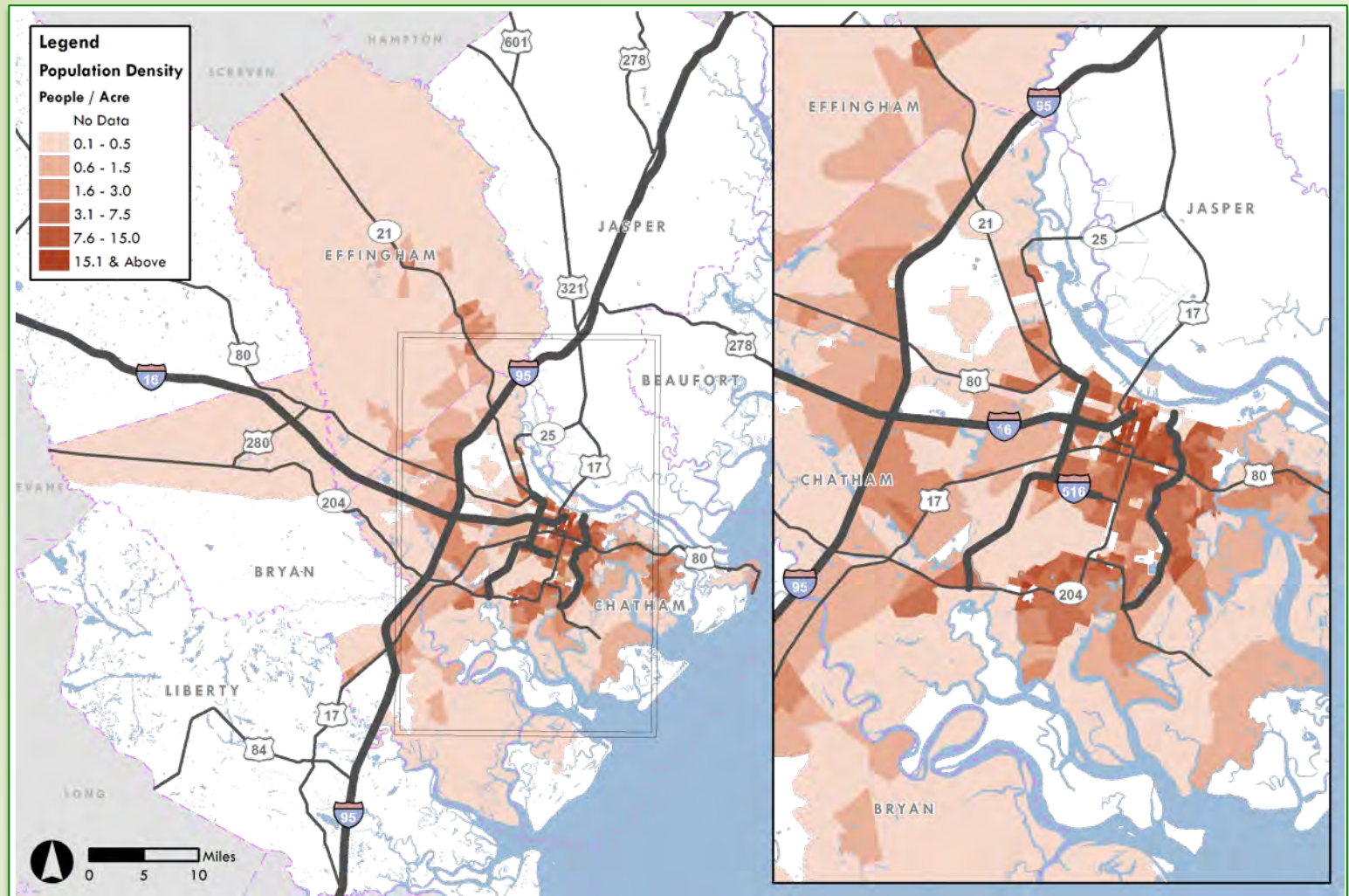


Population Estimates and Forecasts

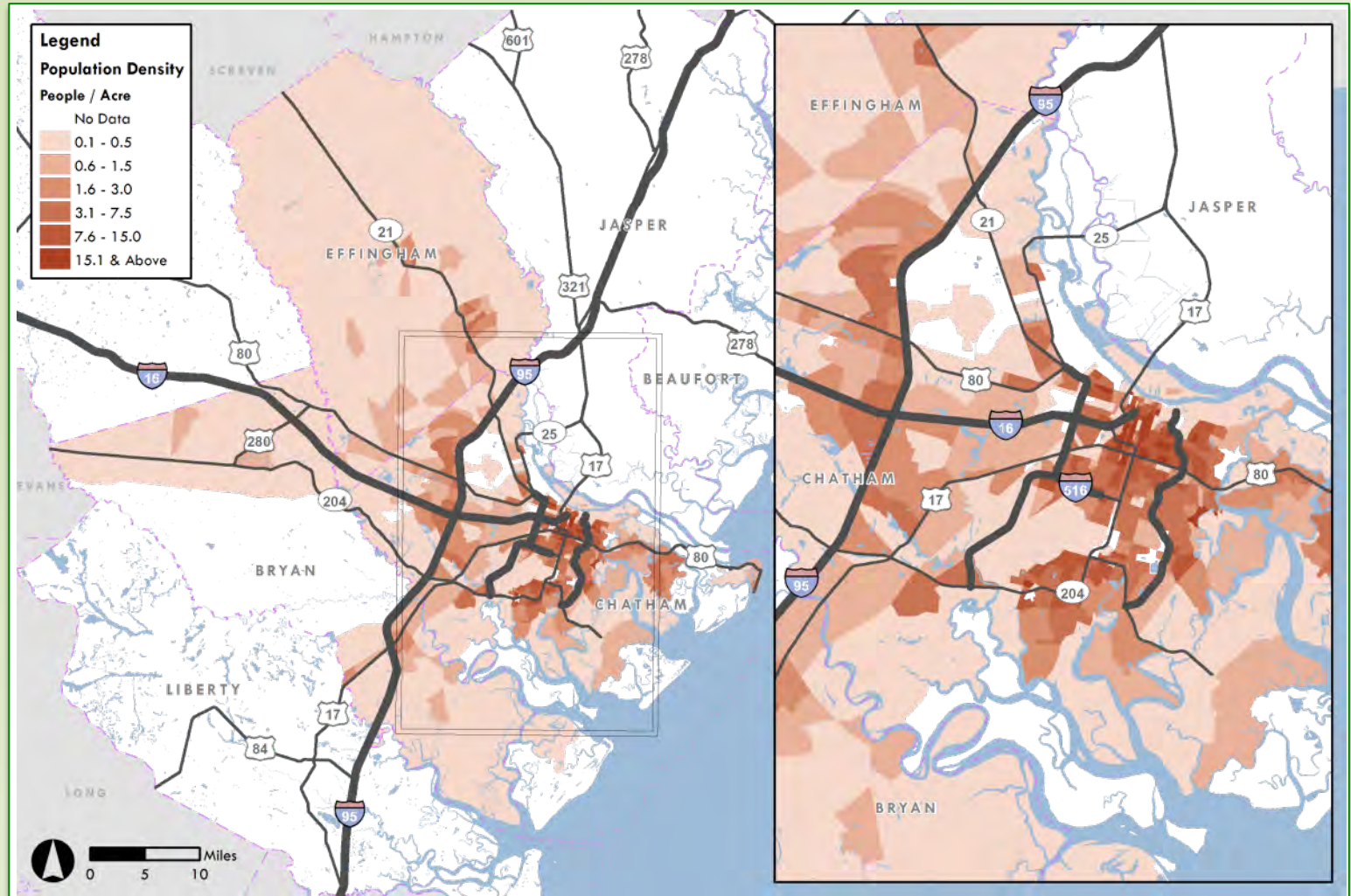
County	2010 Pop.	2012 Pop.	2040 Pop.	2040-2012 % Change
Chatham	265,998	276,434	321,107	16.2%
Effingham	52,420	53,292	71,202	33.6%
Bryan	30,412	32,214	44,028	36.7%
Liberty	62,773	65,471	77,655	18.6%
Bulloch	70,635	72,694	93,689	28.9%
Jasper, SC	24,777	25,833	32,175	24.6%
Beaufort, SC	162,233	168,049	210,718	25.4%
TOTAL	669,248	693,987	850,574	22.6%

Sources: 2010 & 2012: Georgia Office of Planning and Budget, South Carolina Budget & Control Board;
2040: GA Statewide Model and CORE MPO model demographic data

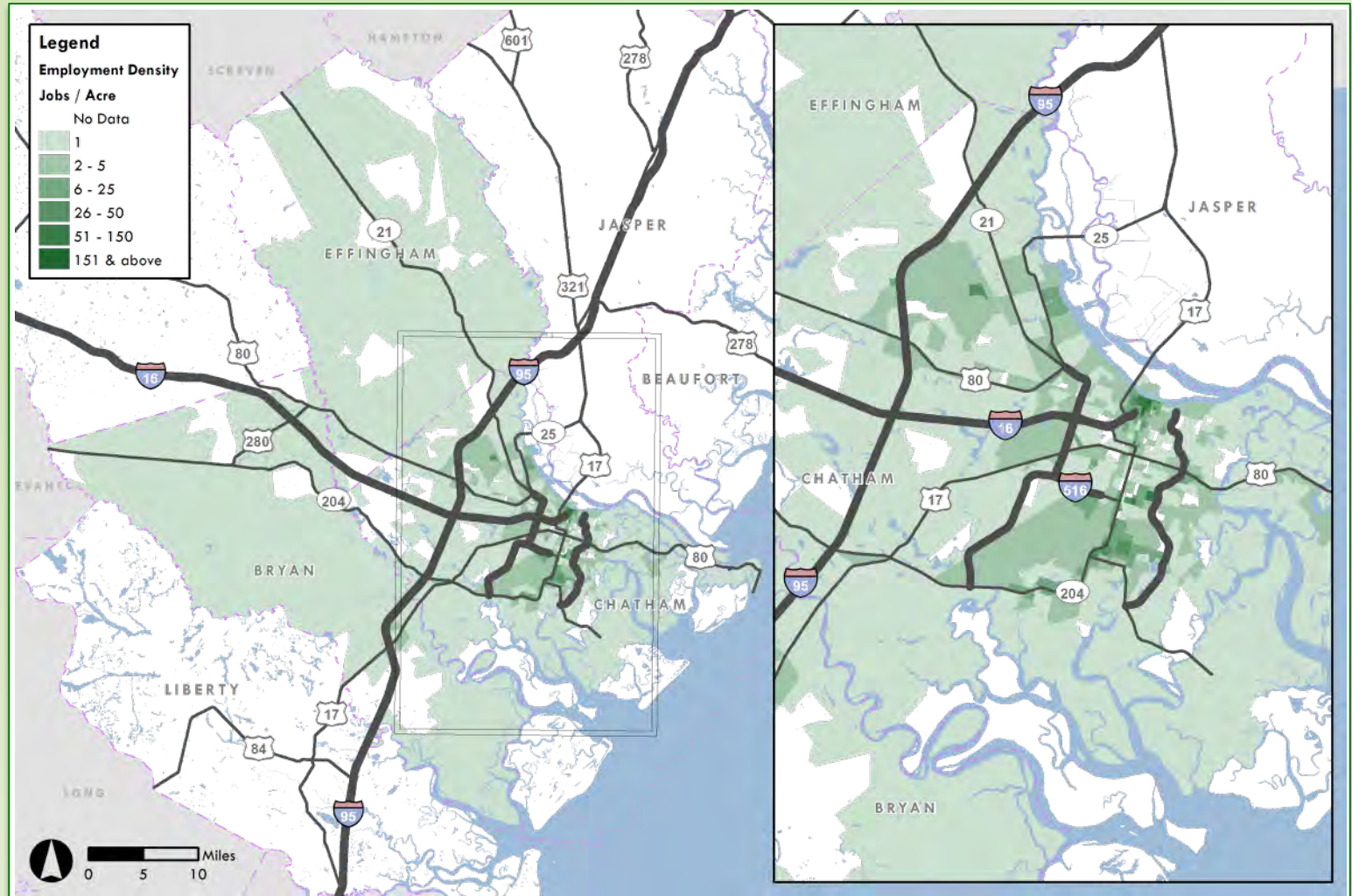
Chatham, Effingham, Bryan Counties 2010 Population Densities



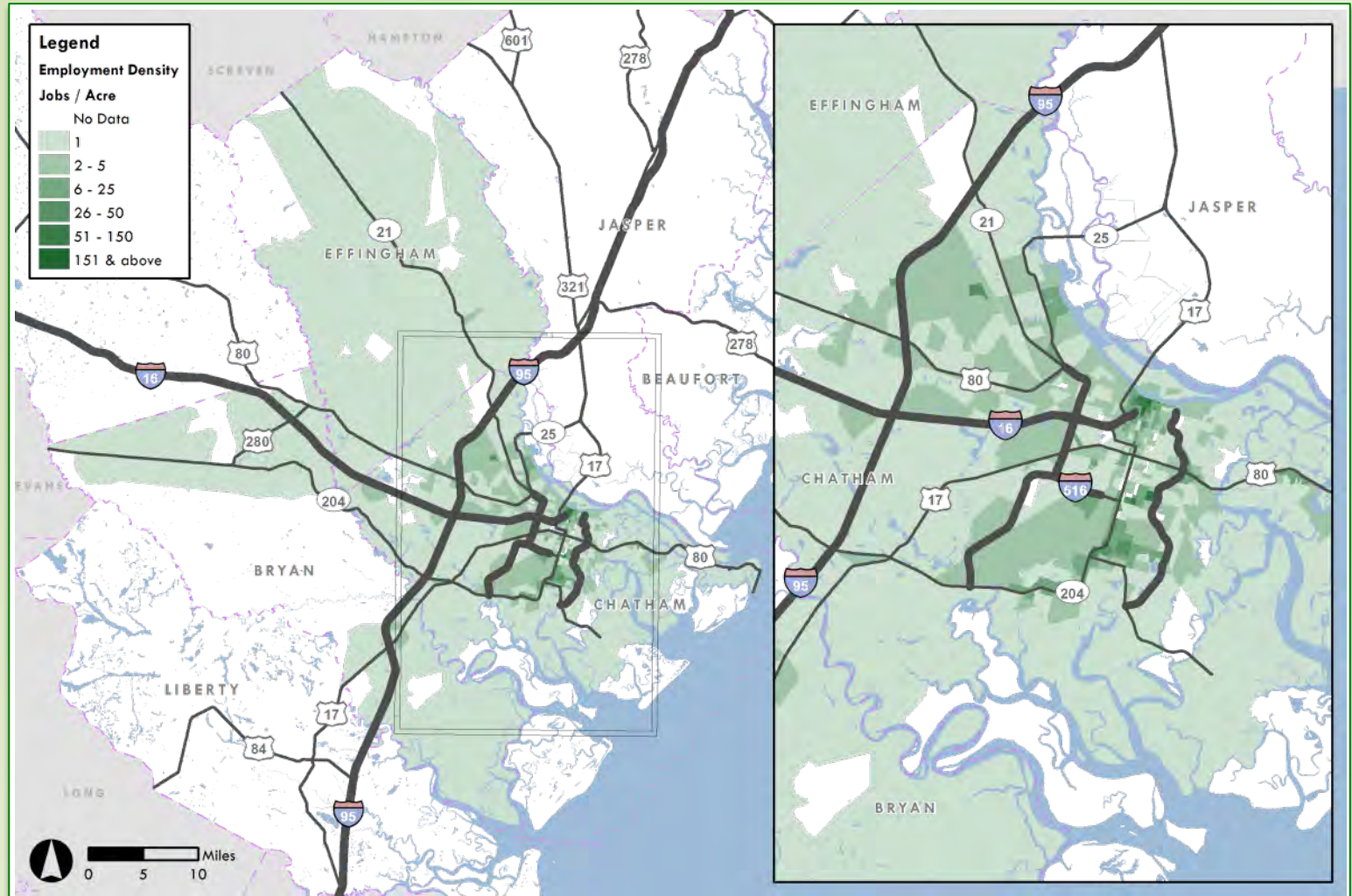
Chatham, Effingham, Bryan Counties 2040 Population Densities



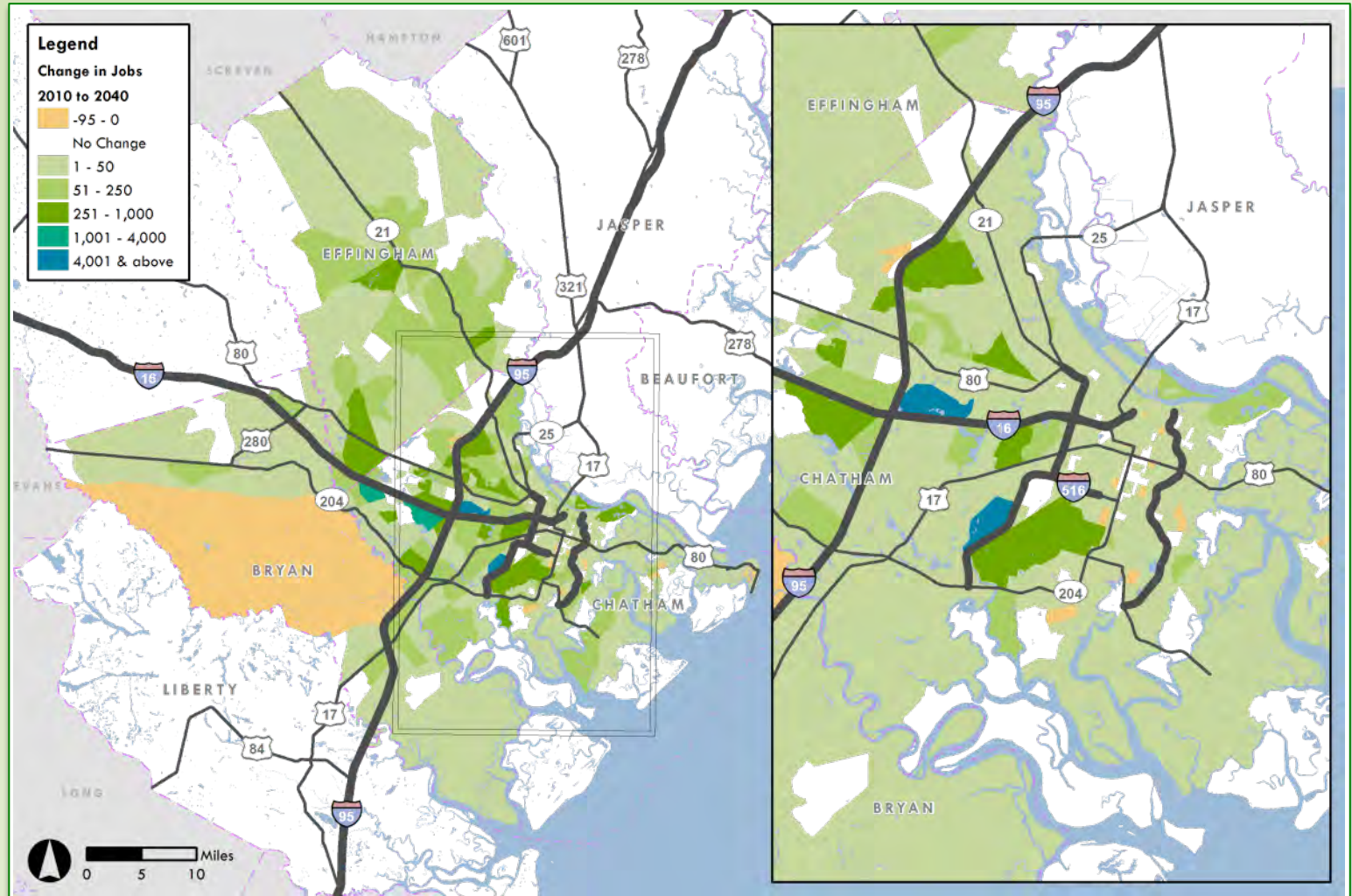
Chatham, Effingham, Bryan Counties 2010 Employment Densities



Chatham, Effingham, Bryan Counties 2040 Employment Densities



Chatham, Effingham, Bryan Counties 2010-2040 Employment Growth



REGIONAL WORK TRAVEL PATTERNS



Regional Work Travel Patterns

County	2009-11 Employees	% Working In County	% Working Outside Cty.	% Working Outside State
Chatham	115,905	92.3%	5.3%	2.4%
Effingham	23,488	33.5%	61.9%	4.6%
Bryan	14,078	29.7%	66.1%	4.2%
Liberty	28,328	79.1%	18.9%	1.9%
Bulloch	28,822	74.8%	24.4%	0.8%
Jasper, SC	10,455	50.3%	39.9%	9.8%
Beaufort, SC	70,703	92.5%	3.1%	4.5%

Sources: 2009-2011 and 2007-2011 American Community Survey

Regional Work Travel Times

County	2009-11 Employees	< 29 min.	30-59 min.	60 or more min.
Chatham	115,905	78.0%	19.1%	2.9%
Effingham	23,488	49.4%	45.2%	5.4%
Bryan	14,078	42.7%	50.8%	6.5%
Liberty	28,328	78.9%	14.7%	6.4%
Bulloch	28,822	72.4%	18.6%	9.0%
Jasper, SC	10,455	48.4%	42.6%	9.0%
Beaufort, SC	70,703	75.5%	19.7%	4.8%

Sources: 2009-2011 and 2007-2011 American Community Survey

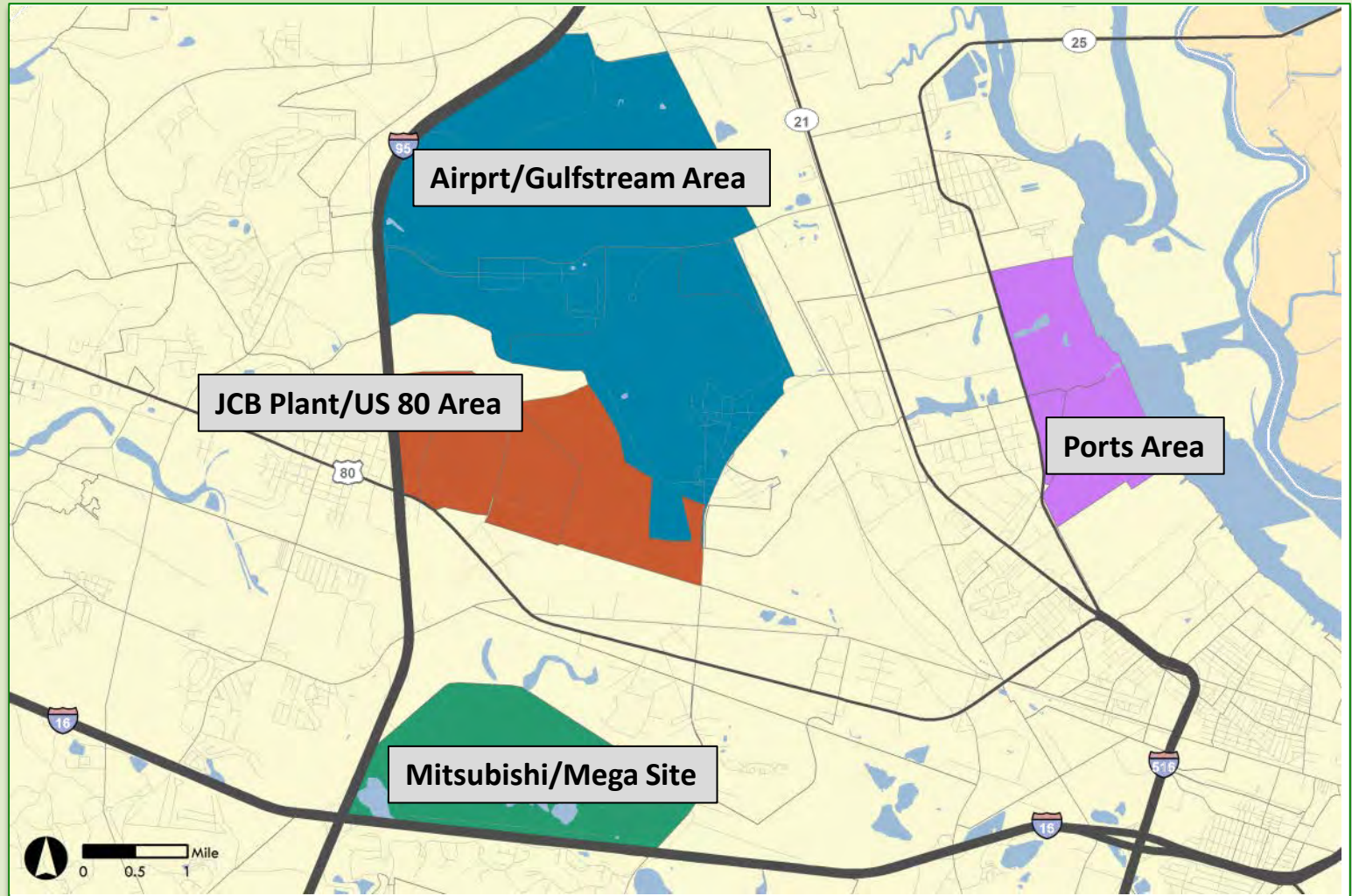
ACTIVITY CENTER WORK FORCE AND TRAVEL PATTERNS



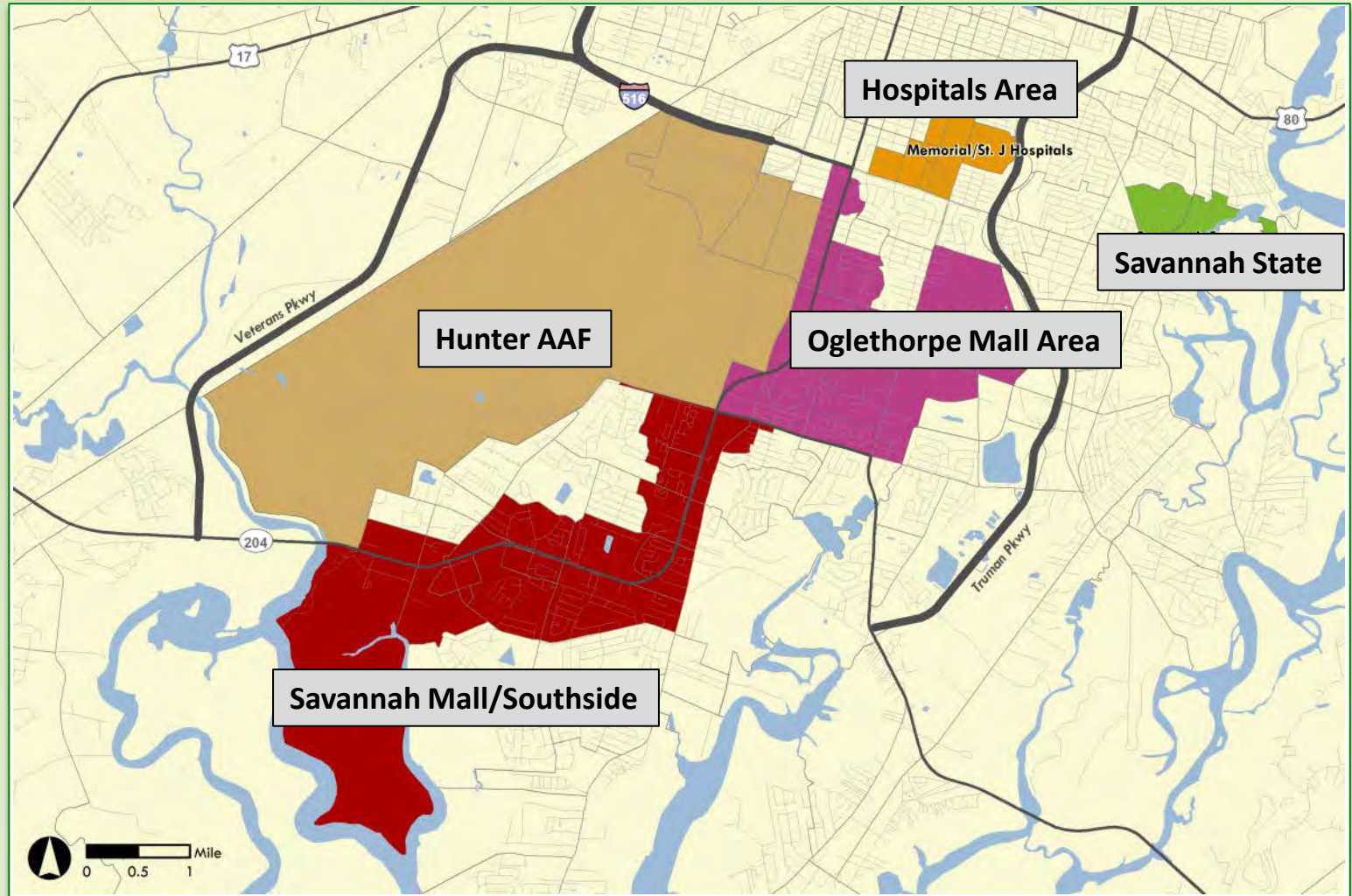
Downtown Savannah Area



Non-Downtown Employment Areas



Non-Downtown Employment Areas

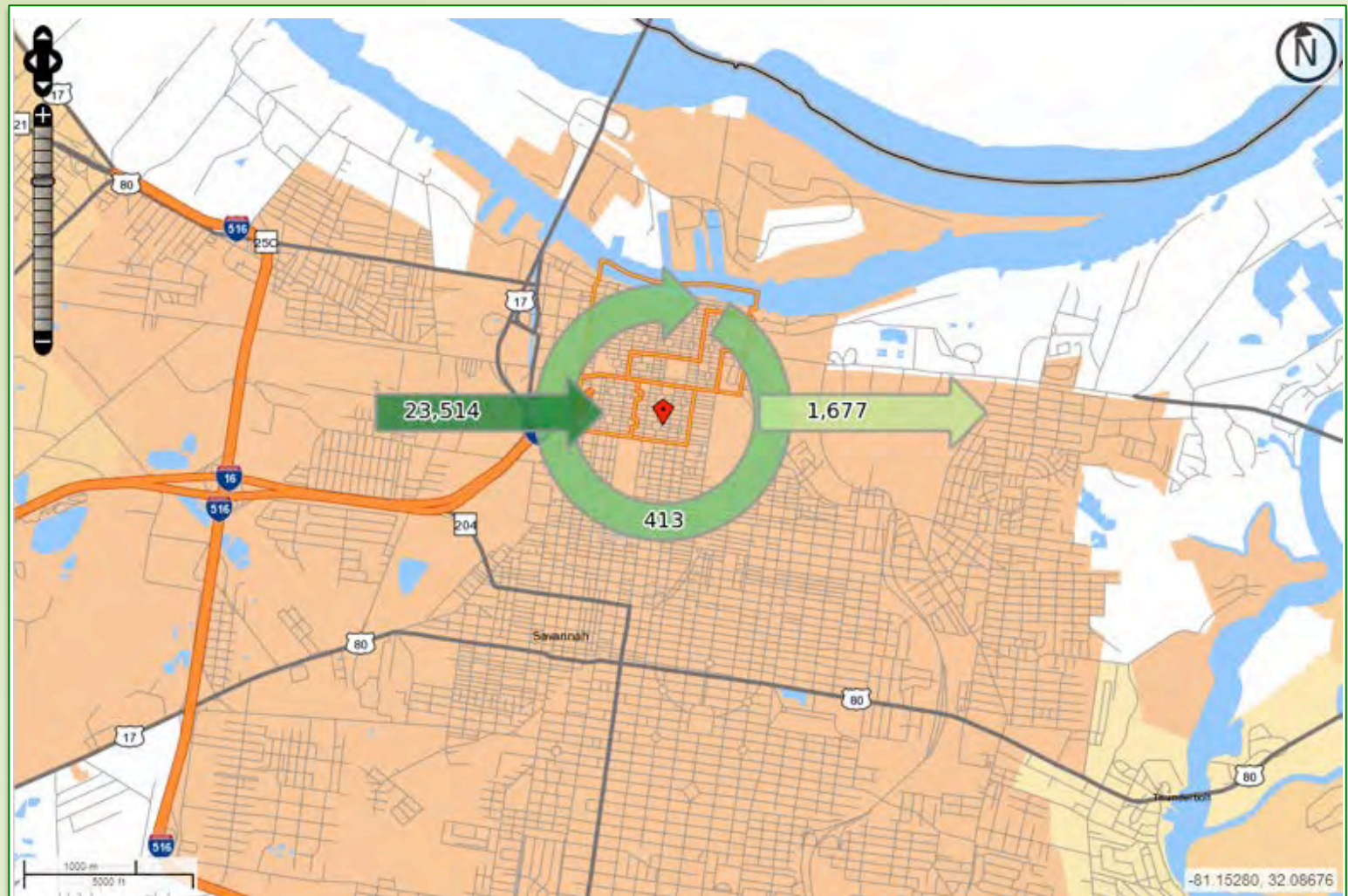


Concentrated Employment Areas

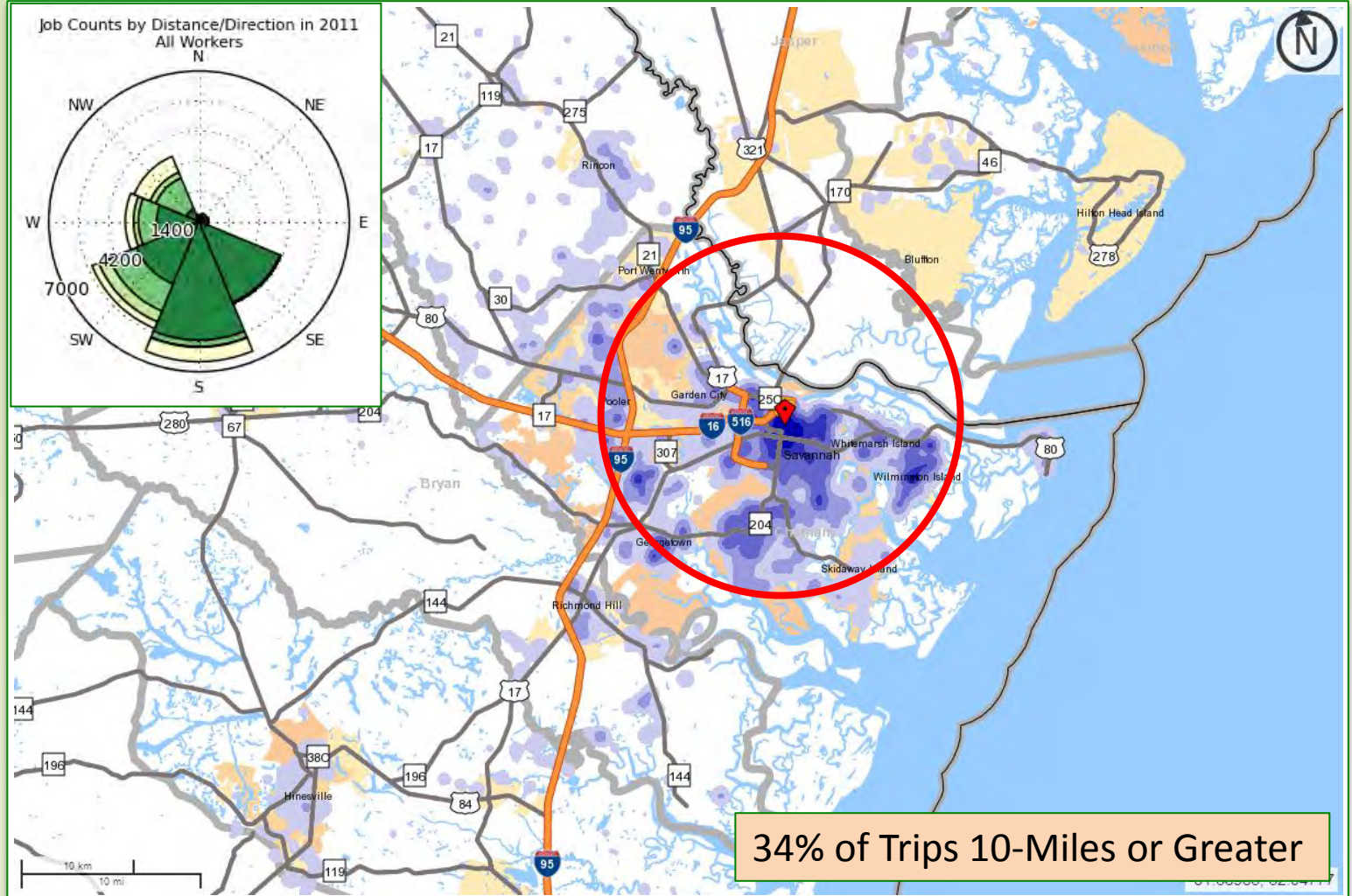
Attraction Area	2010 Empl.	2010 Dens.	2040 Empl.	2040 Dens.
Downtown	22,799	6.09	24,193	6.47
Oglethorpe Mall Area	22,649	6.05	24,461	6.54
Hunter Army Airfield	14,711	3.93	15,461	4.13
Hospitals Area	13,340	3.57	13,678	3.66
Southside/Savannah Mall	11,306	3.02	12,764	3.41
Airport & Gulfstream	11,148	2.98	12,292	3.29
GA Ports Auth. Area	4,659	1.25	5,099	1.36
JCB Plant Area	2,886	0.77	3,298	.88
Savannah State	850	0.23	896	0.24
Mitsubishi Plant Area	209	0.06	7,013	1.87

Downtown Employment Trips

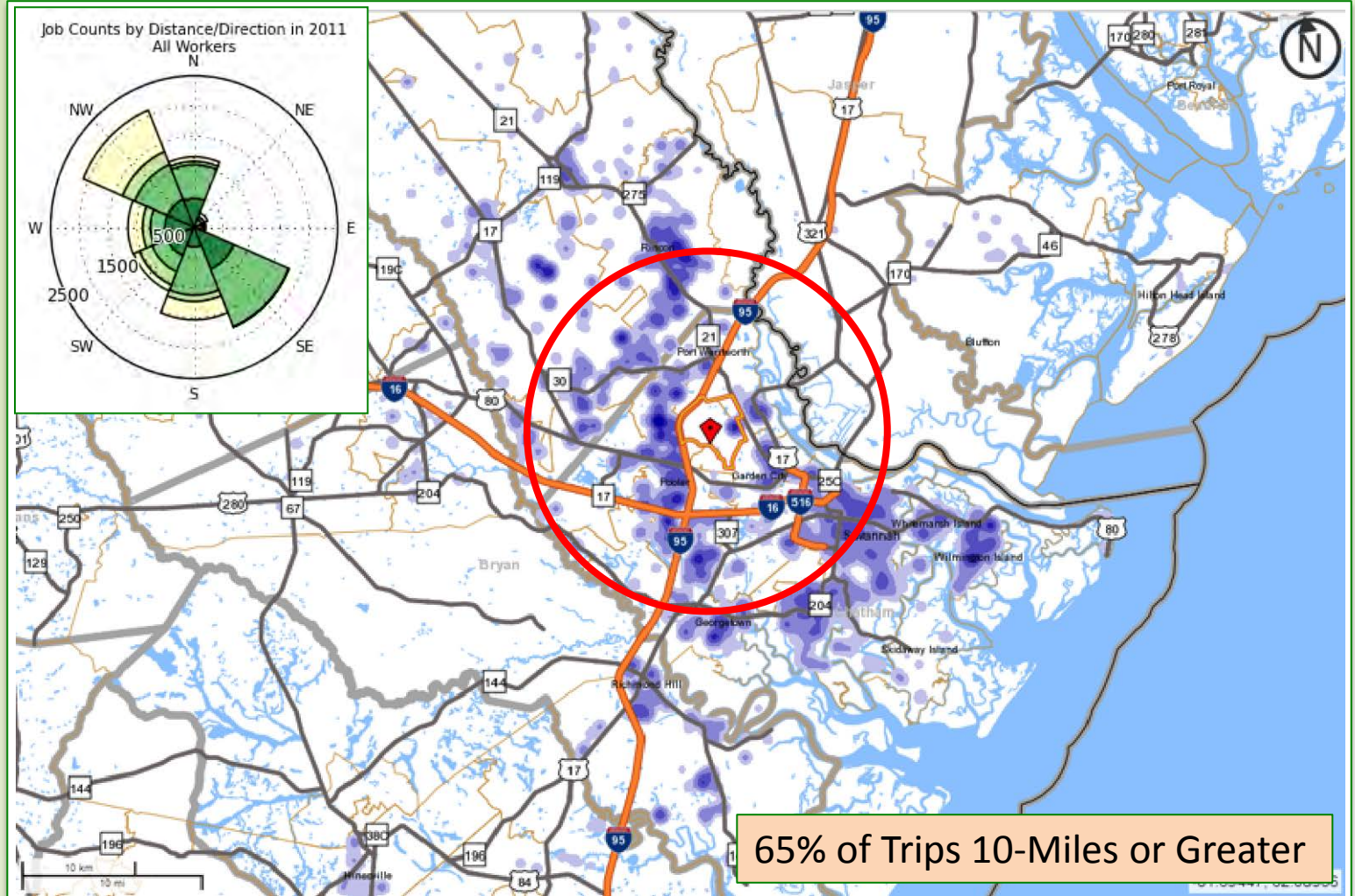
2011 LEHD Inflow/Outflow of Work Trips



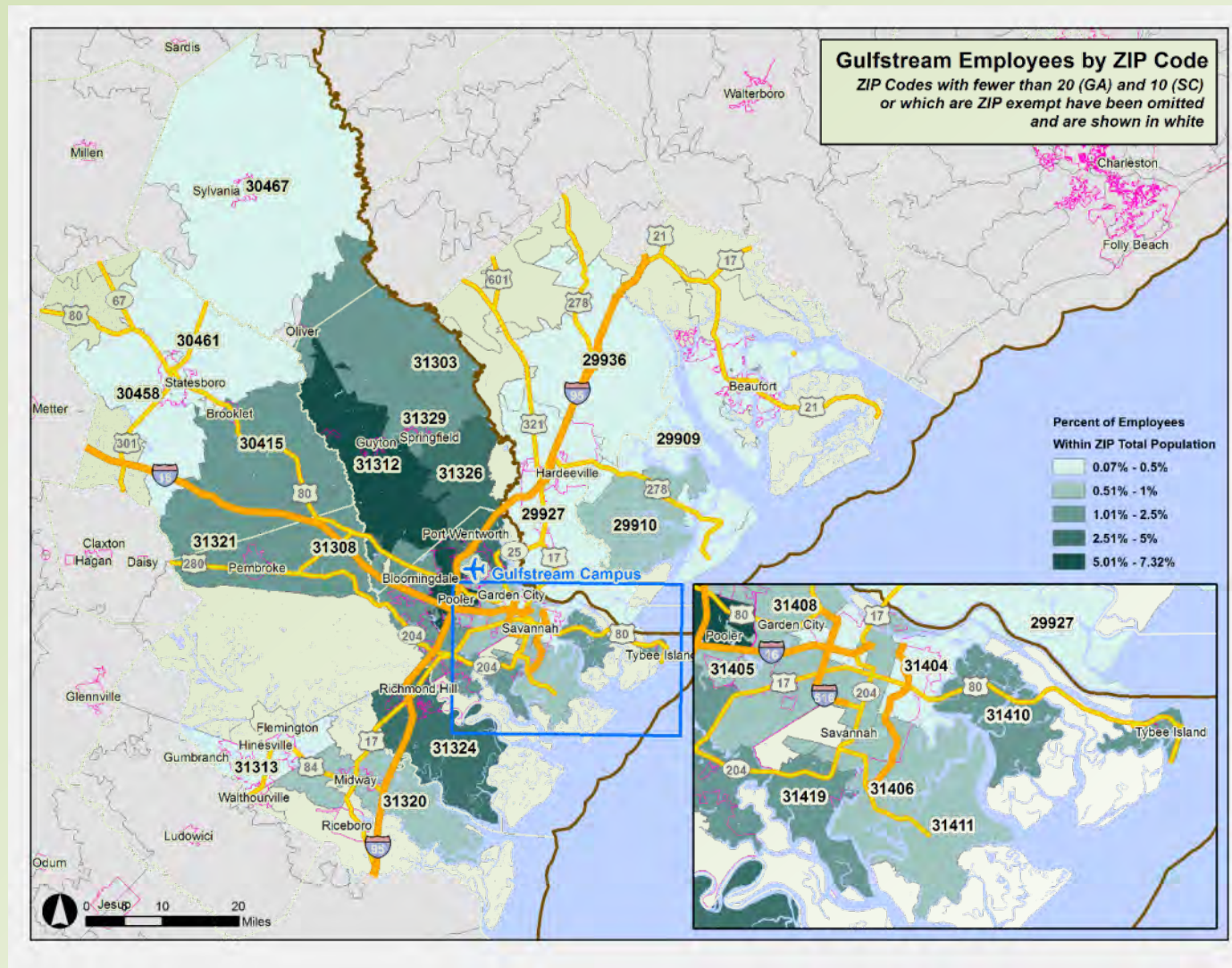
Downtown Employment Trips 2011 LEHD Home Locations



Airport/Gulfstream Trips 2011 LEHD Home Locations

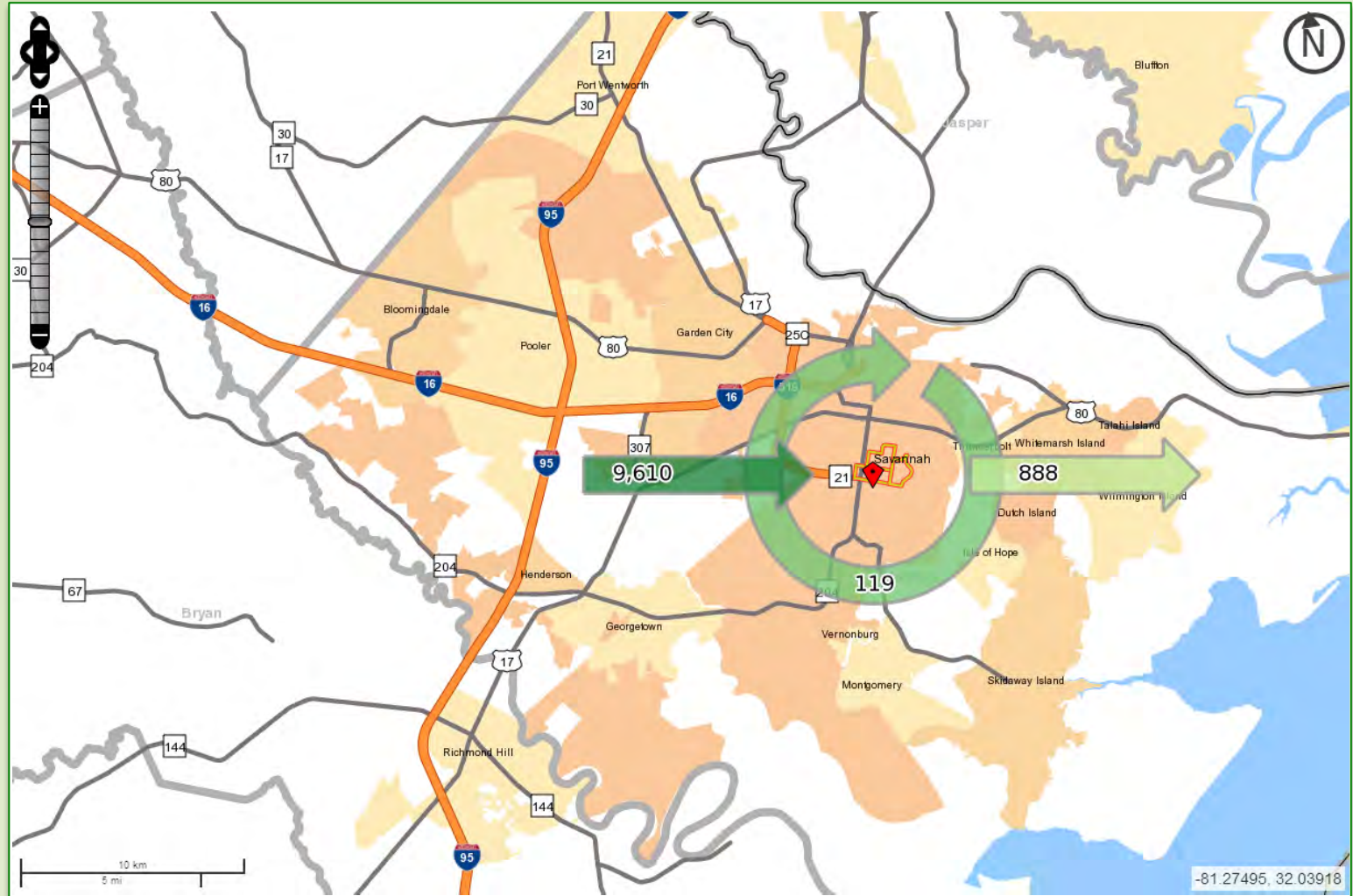


Gulfstream Employee Actual Home Locations: Percentage By Zip Code



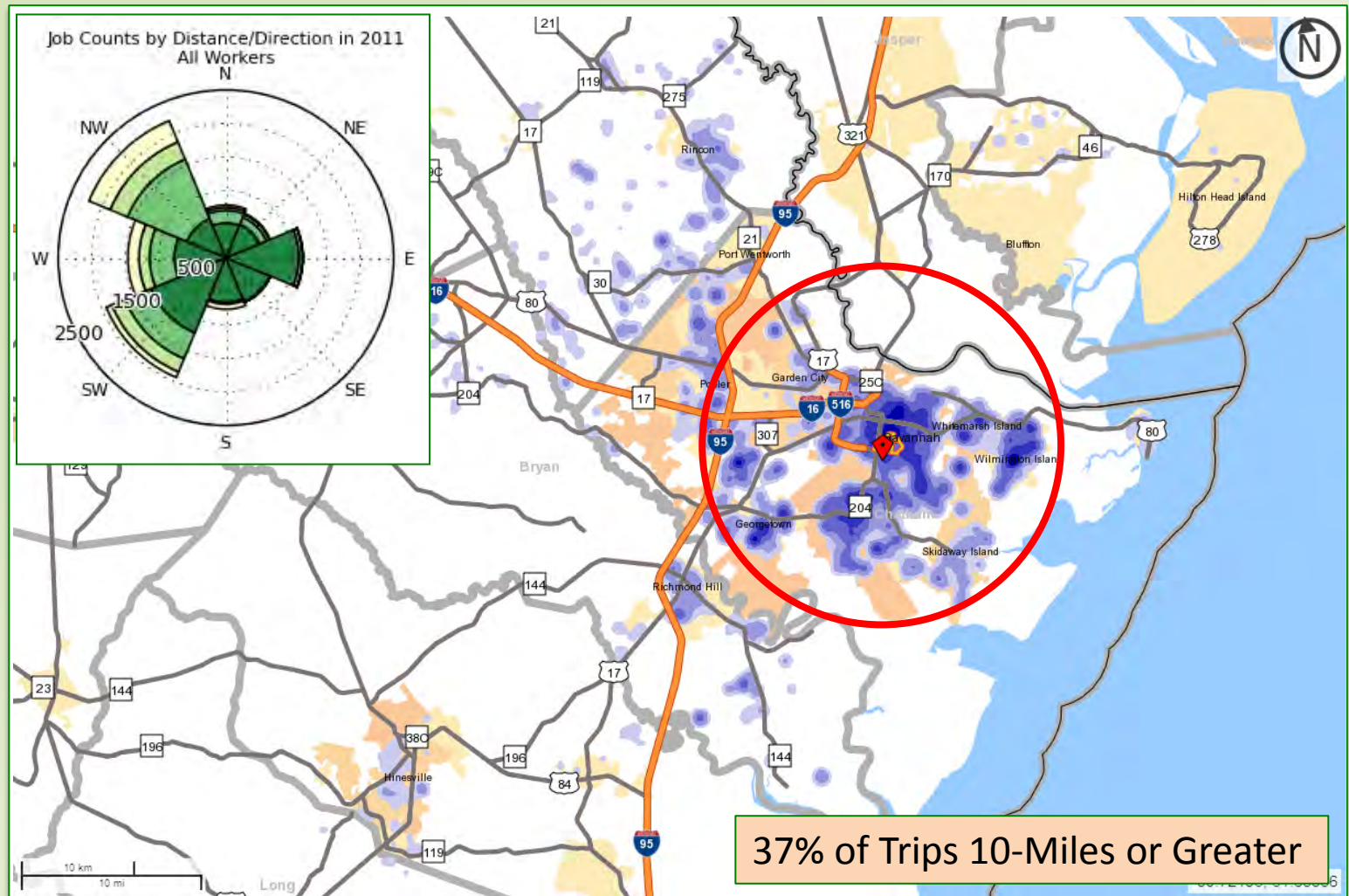
Hospitals Area Trips

2011 LEHD Inflow/Outflow of Work Trips



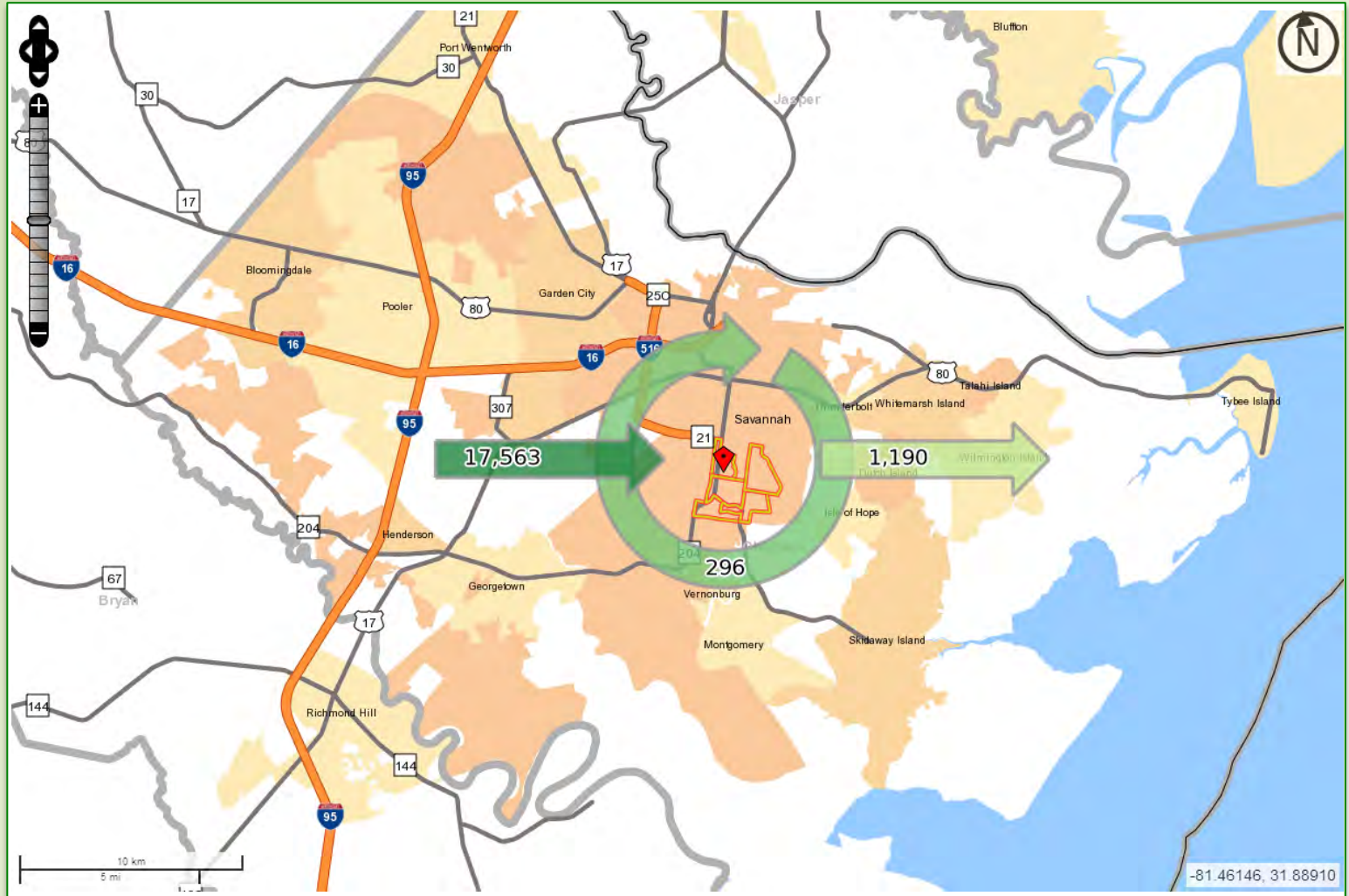
Hospitals Area Trips

2011 LEHD Home Locations



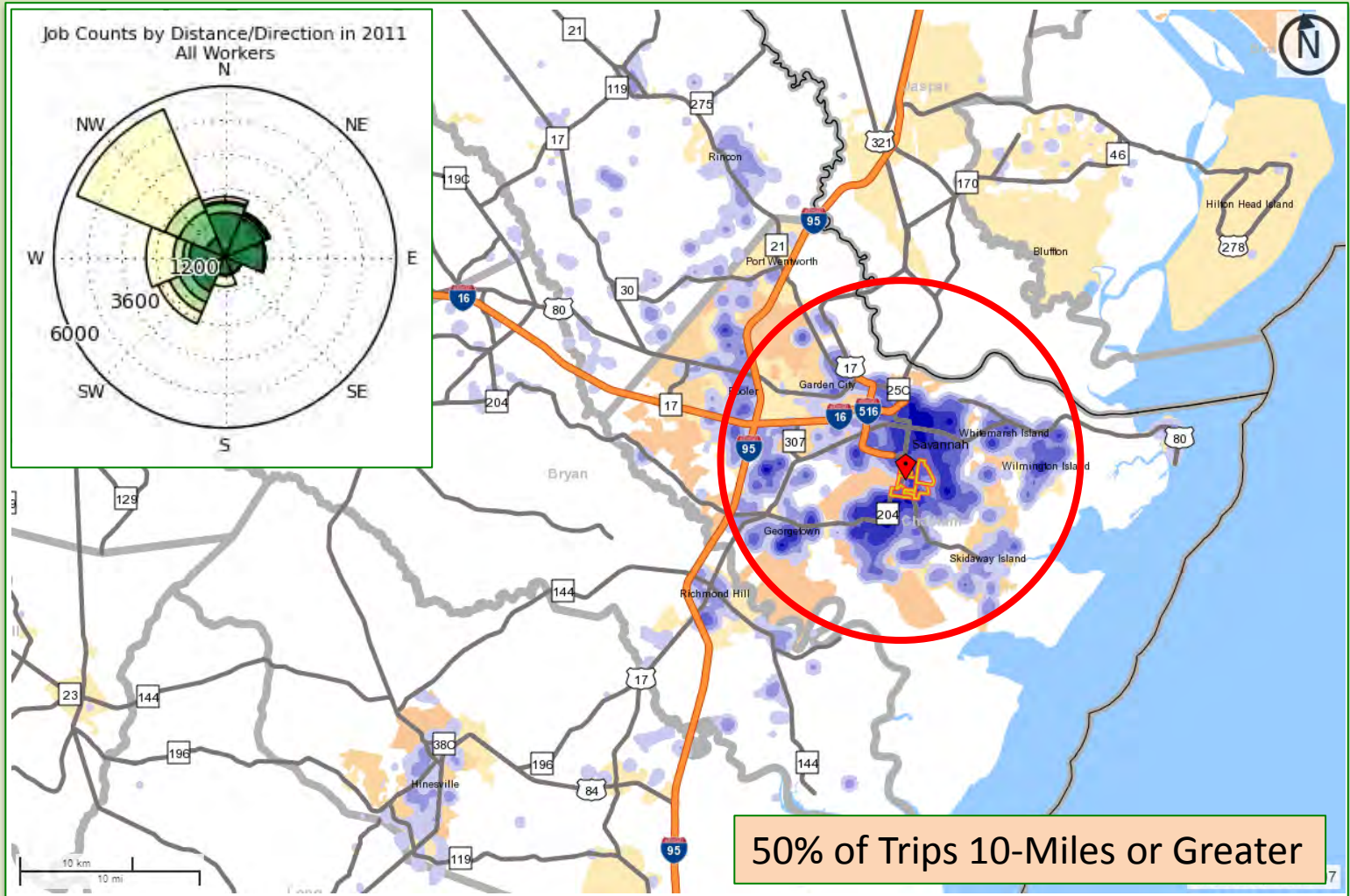
Oglethorpe Mall Area Trips

2011 LEHD Inflow/Outflow of Work Trips



Oglethorpe Mall Area Trips

2011 LEHD Home Locations



EXISTING GDOT RIDESHARE LOTS



Existing GDOT Rideshare Lots

Bryan County:

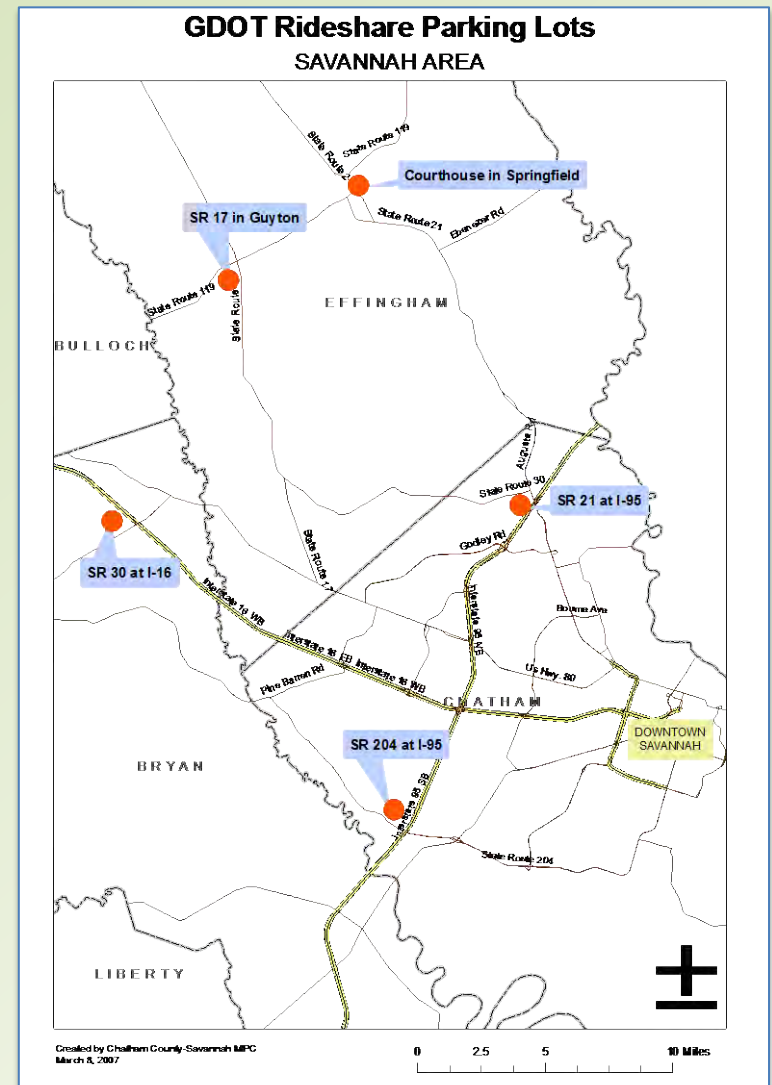
- US 280/SR 30 at I-16

Effingham County:

- SR 17 in Guyton
- Courthouse in Springfield

Chatham County:

- SR 21/Augusta Rd. at I-95
- SR 204/Fort Argyle Rd. at I-95



Existing GDOT Rideshare Lots

General Characteristics

- About 20-35 spaces at each lot
- Utilization varies by location (40% - 110%)
- Limited way-finding signage
- Most require restriping and lighting
- Expansion opportunities may exist



INITIAL OBSERVATIONS



Initial Observations

Regional Demographics & Travel Patterns

- Highest population growth rates in Effingham and Bryan Counties
- Population and employment growth forecast along and west of I-95 corridor
- Over 2/3 of work trips from Effingham and Bryan Counties are leaving those counties
- Over 3/4 of work trips from Liberty and Bulloch Counties are remaining within those counties
- Most work trips in Jasper and Beaufort SC Counties are remaining in South Carolina

Initial Observations

Activity Center Employment & Travel Patterns

- Highest employment and densities in Downtown Savannah
- Other areas with significant employment and densities include:
 - ✓ Gulfstream/Airport
 - ✓ Hospitals Area
 - ✓ Hunter Army Airfield
 - ✓ Oglethorpe Mall and Southside Areas
- Mitsubishi/Mega Site has high forecast employment and could be future transit service market

Initial Observations

Activity Center Employment & Travel Patterns (Continued)

- LEHD analysis suggests key commute corridors for major work trip attraction areas are:
 - ✓ Northwest (Highway 21)
 - ✓ West (US 80 and I-16)
 - ✓ South (US 17 and I-95)
- Existing GDOT rideshare lots fall within these corridors
- Additional household/employer information to be collected through stakeholder interviews before finalizing recommended corridors and work place destinations

NEXT STEPS



Next Steps

Regional Demographics & Travel Patterns

- Stakeholder Input/Interviews
- Completion of Tech Memo 2 (draft) with travel pattern analysis and commuter travel shed prioritization findings
- Stakeholder Meeting #2
 - ✓ Review of Tech Memo #2
 - ✓ Seek input on park & ride lot identification and evaluation process

QUESTIONS & DISCUSSION

