

People

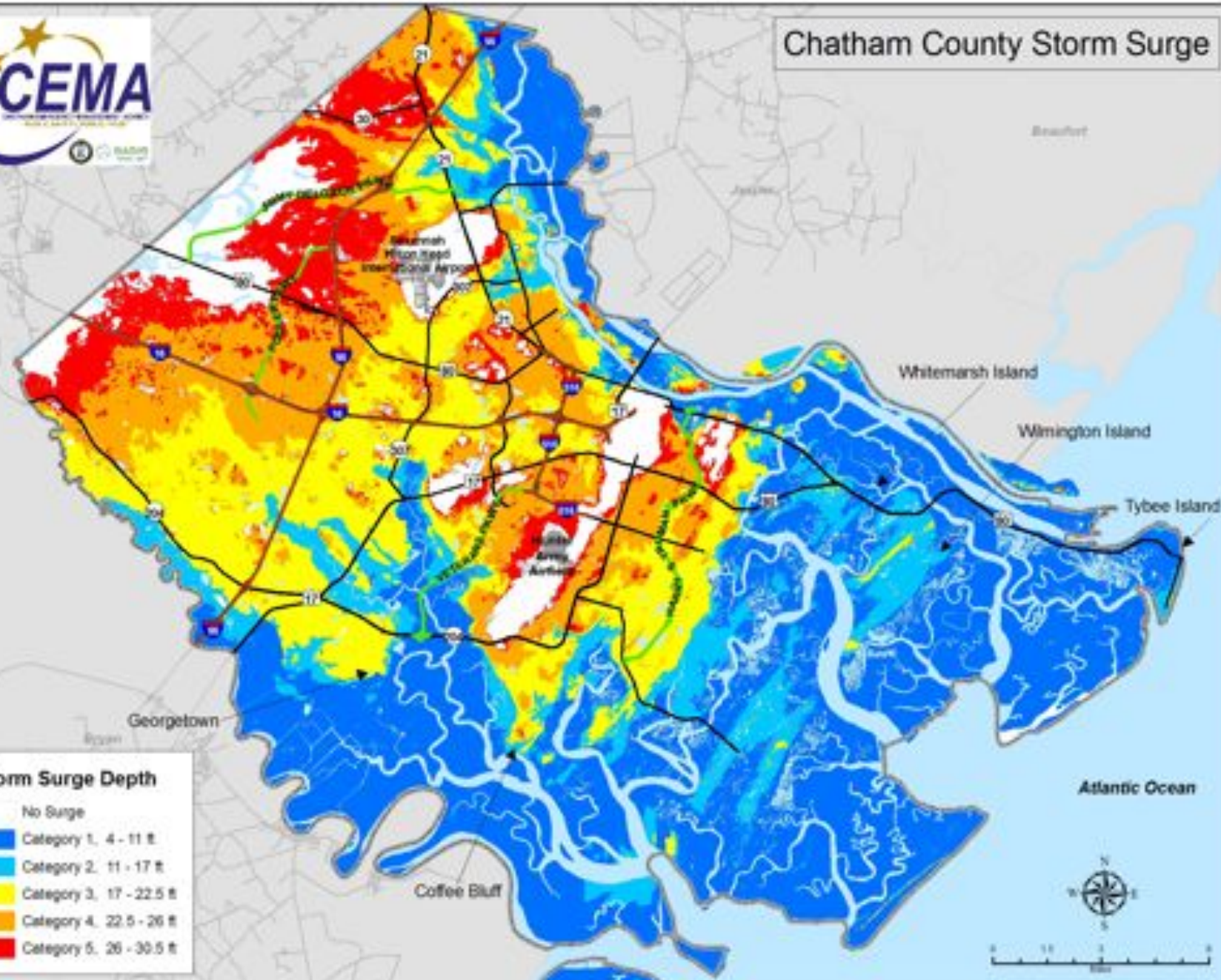
Nature



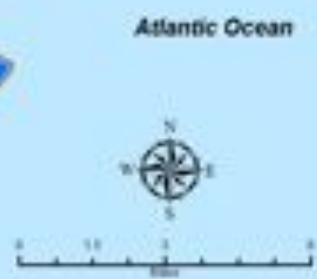
*Disaster Potentials: Flooding & Sea Level Rise  
Route 80 & Tybee Island*



# Chatham County Storm Surge



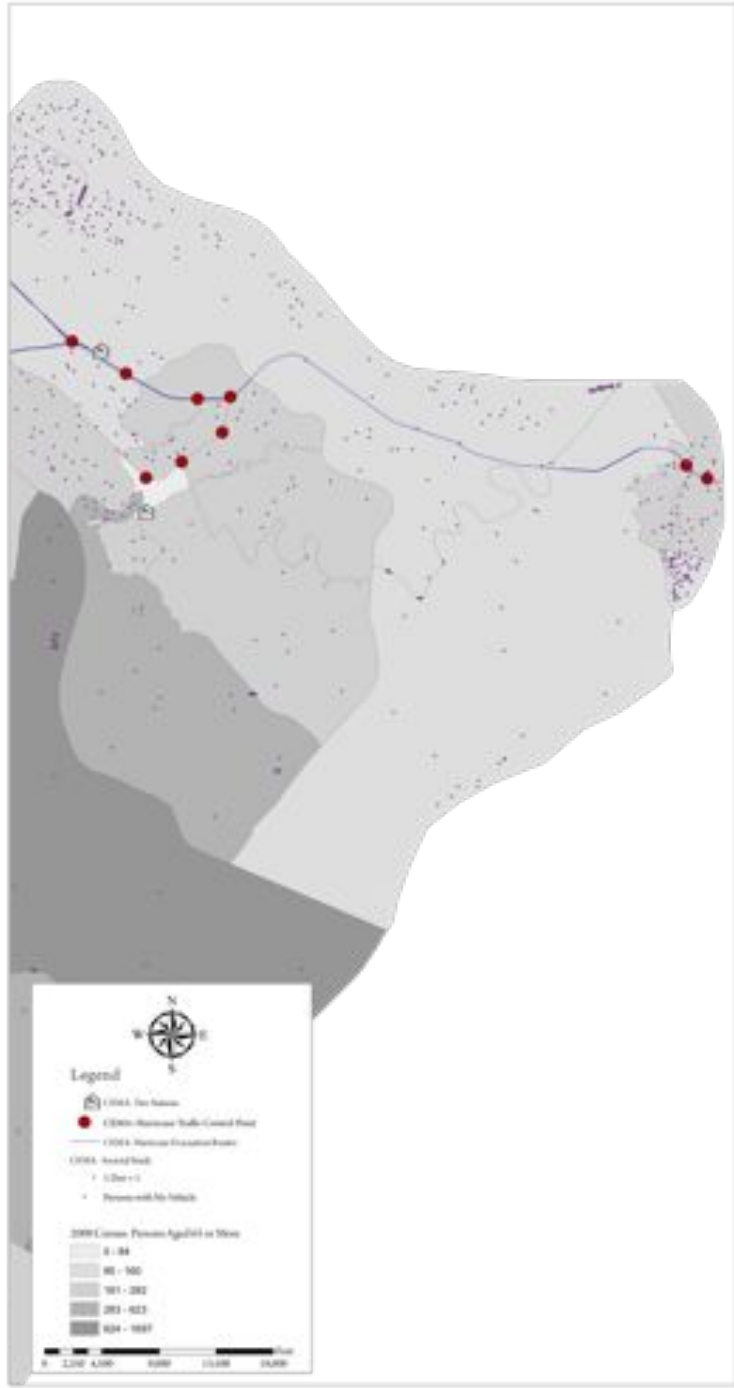
Storm Surge Depth	
No Surge	
Category 1, 4 - 11 ft	Dark Blue
Category 2, 11 - 17 ft	Light Blue
Category 3, 17 - 22.5 ft	Yellow
Category 4, 22.5 - 26 ft	Orange
Category 5, 26 - 30.5 ft	Red



*To View the Shallow Coastal Flooding Movie Visit:*  
[www.thempc.org/transportation/waveecologystudy.html](http://www.thempc.org/transportation/waveecologystudy.html)

# Wave Ecology: Route 80 & Tybee Island

## Aging Populations & Risk





## Tybee Island Safe Site Locations



...because storms can approach quickly...

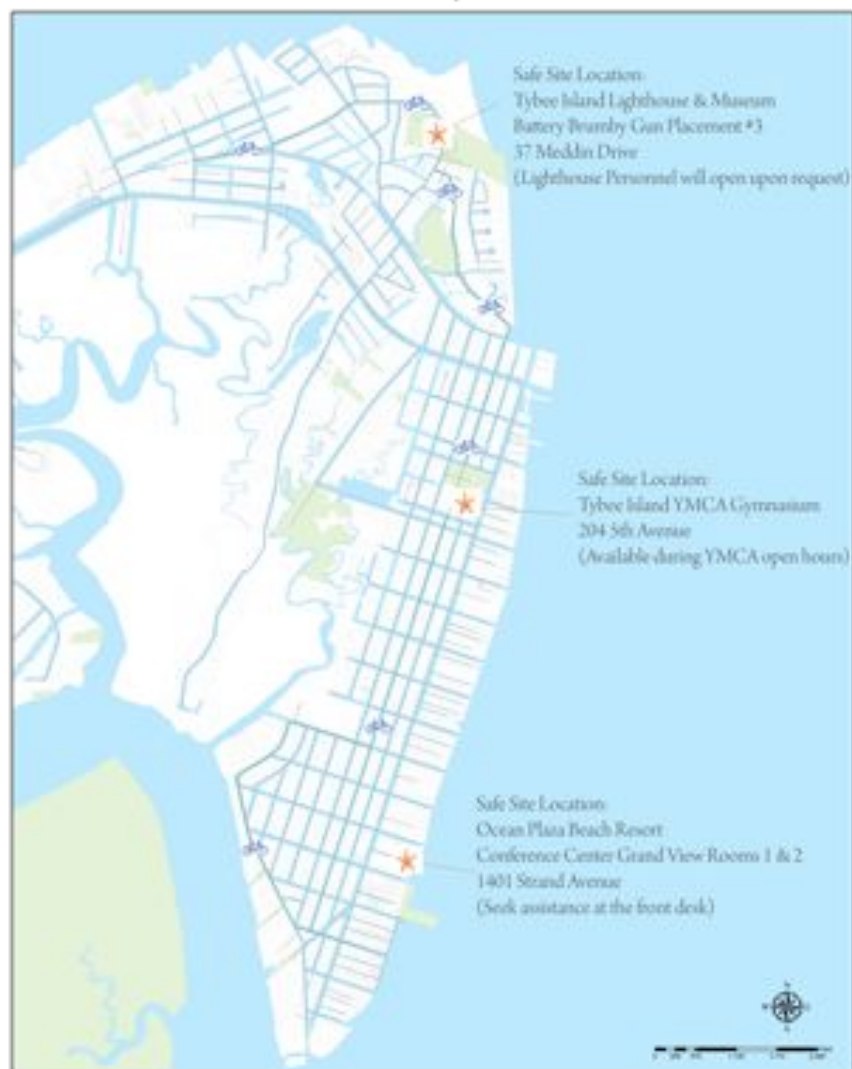
Storms may form quickly on Tybee Island. In the event you are caught with no place to seek shelter, the sites identified on this map will be available.

Please note:

These are not to be utilized for long periods of time.

They will not be available in the event of a hurricane.

No food or water is provided.





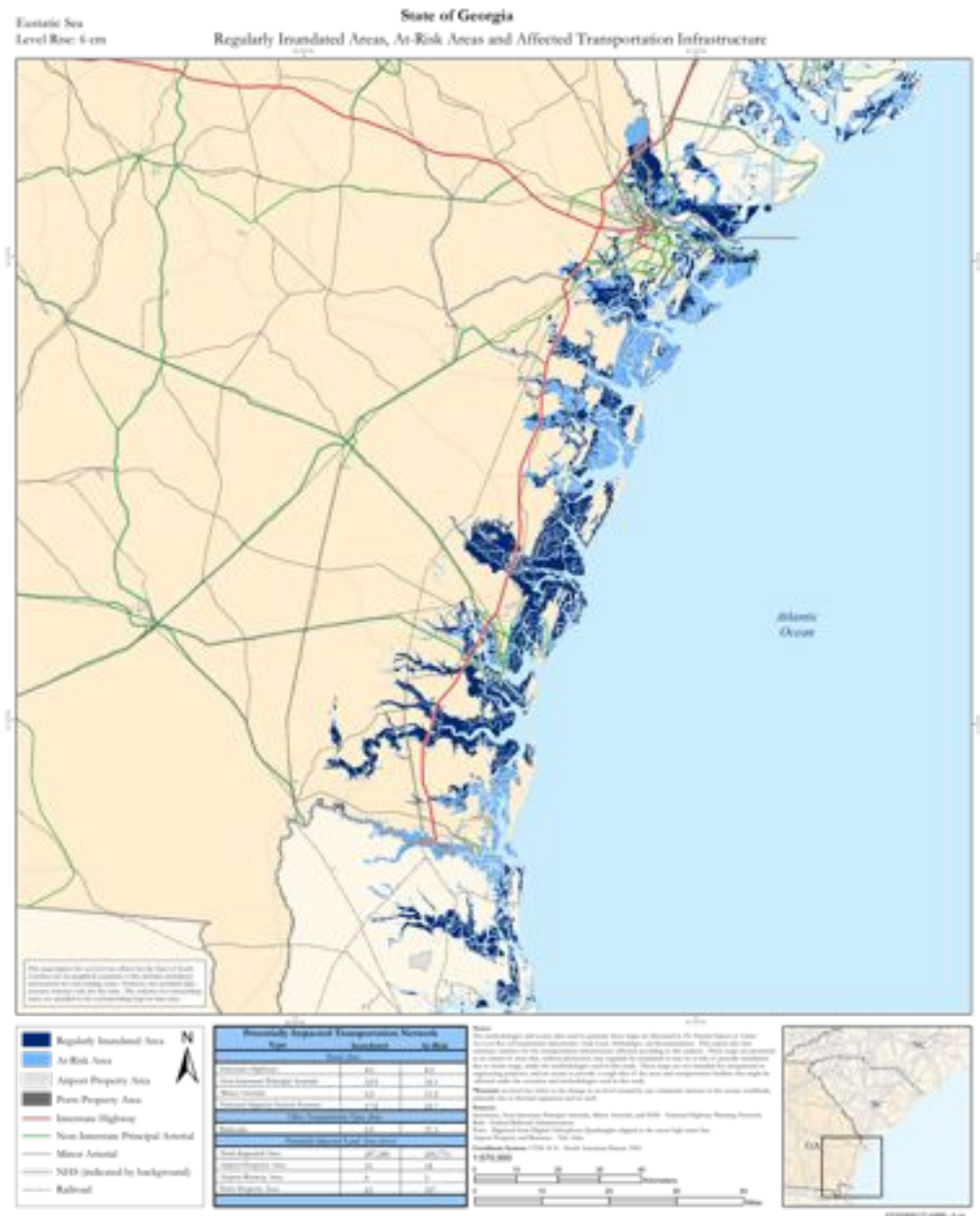


## *Sea Level Rise*

*To View a Model of 1 meter rise for Chatham County :*

[http://www.crms.uga.edu/hba/GA\\_slr\\_flash2.html](http://www.crms.uga.edu/hba/GA_slr_flash2.html)

# US DOT Study: Sea Level Rise 6cm







*US DOT Study:  
Sea Level Rise 6cm*



## *Final Maps*

---

*Waterways & Mobility – Bathymetry & Marinas*  
*Traffic Incidents – Highway 80 Corridor & Tybee Island*