

April 24<sup>th</sup>, 2024

1402 Habersham Street  
Non-Contributing Addition  
Victorian District

### **Project Narrative**

Bobbie's, a 1954 prefabricated Mountain View Diner, occupies the corner of Habersham and E. Anderson St. It was relocated from Rome, NY by the Savannah College of Art and Design as part of their food service program. This art-deco inspired diner, though not contributing to the Victorian District, stands out with its reflective, metallic façade and distinctive linear features. The project's goal is to preserve the diner while enhancing its operational capacity by expanding both its kitchen and seating area. This expansion entails enlarging the kitchen towards the rear, adding a covered outdoor dining space, and improving the surrounding site. All new construction elements are meticulously designed to complement the diner's unique style while harmonizing with the Victorian District's visual aesthetics.

The historic diner will undergo necessary maintenance, including applying a stucco coat to its painted concrete block base to visually integrate the proposed addition with the existing structure. Additionally, the diner's stairs will be replaced with code-compliant ones, and one of its metal awnings will be relocated to the kitchen addition.

In line with many historic pre-fabricated diners, a kitchen addition is proposed at the rear. This simple stucco addition will be dark gray to contrast with the diner's reflective metallic façade. Instead of a window, a metal louvered panel will adorn the addition's street-facing façade, which will also feature horizontal stucco banding aligning with the diner's linear elements. The façade will incorporate a parapeted roof to conceal future mechanical equipment. Additional screening for mechanical equipment will be installed as necessary, following confirmation of specific equipment. A mechanical area will protrude slightly from the diner's secondary façade, screened with a painted wood slat fence and metal posts.

To expand seating, a raised, covered patio is proposed along the diner's secondary façade. Supported by round steel posts, a composite fascia roof with an integral gutter will cover this patio, featuring curved linear elements to complement the diner's art deco design. The matte curved fascia pays homage to the historic diner's metallic façade while allowing it to remain prominent. Surrounding the patio, a curved metal rail will connect each column, with the base of the raised patio finished in stucco to match the existing building's base. Perforated metal panels will screen the seating area from the adjacent parking lot.

The proposed sitework focuses on enhancing accessibility and complementing the new additions. A short perforated metal fence will enclose a small patio seating area at the front, while surrounding hardscape will be replaced with landscaping or cementitious pavers. A code-compliant ramp parallel to the addition will be provided at the rear, screened by a proposed wood slat and metal post fence. The concrete sidewalk surrounding the building will be replaced with city-specified brick pavers, and additional tree lawns

will be incorporated. Finally, a trash enclosure matching the adjacent existing fence will be constructed off the lane.

Sincerely,

A handwritten signature in dark ink, appearing to read "Andrew S. Lynch", followed by a long horizontal flourish.

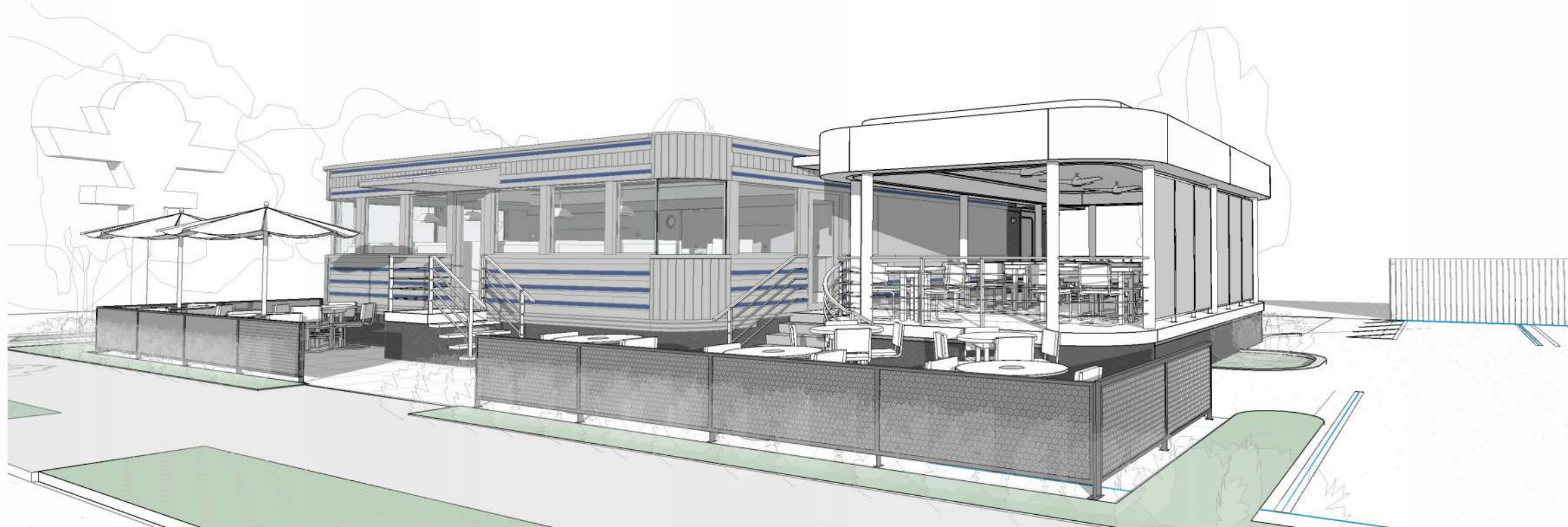
Andrew S. Lynch, AIA, LEED AP  
Principal



# SCAD BOBBIE'S ADDITION

1402 HABERSHAM STREET | SAVANNAH, GA 31401

PIN #20053 20013



HPC SUBMISSION

April 24th, 2024





View of existing building from Habersham Street



View of existing sign from Anderson Street



View of existing building from Anderson Street



View of existing building from Anderson Street

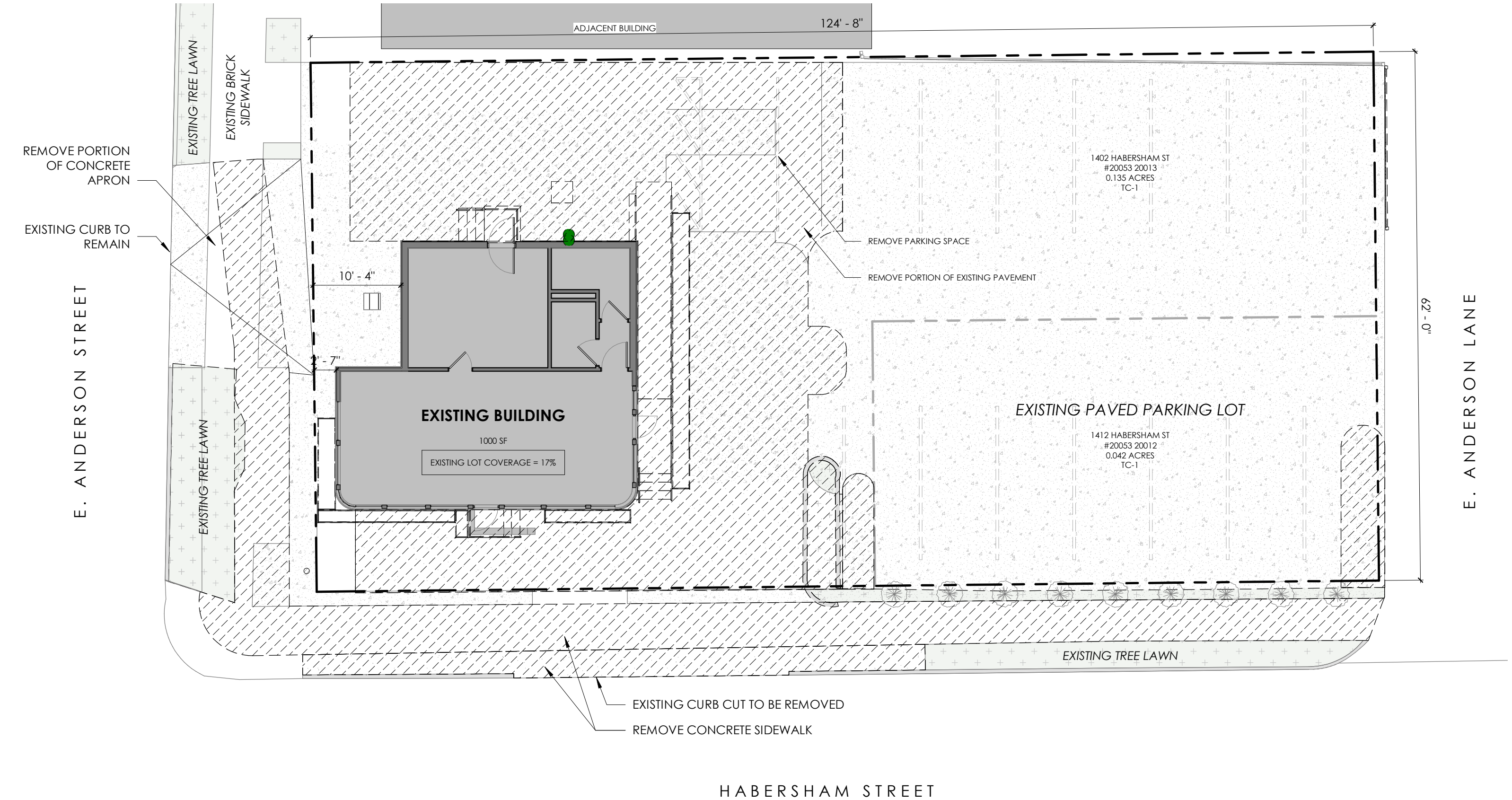


View of existing building from parking lot

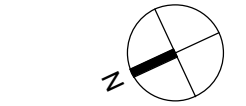


View of existing building from parking lot

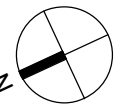




SCALE: 3/32" = 1'-0"



April 24th, 2024



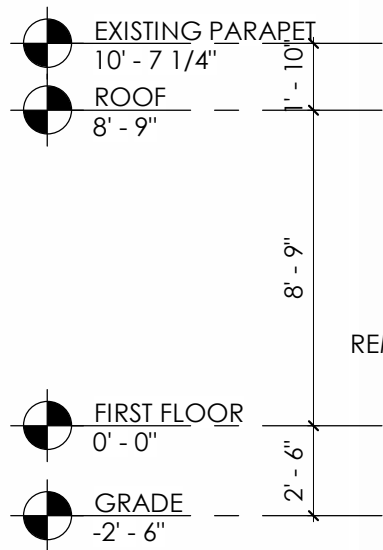
# DEMOLITION PLAN

SCAD BOBBIE'S ADDITION  
1402 HABERSHAM STREET | SAVANNAH, GA 31401

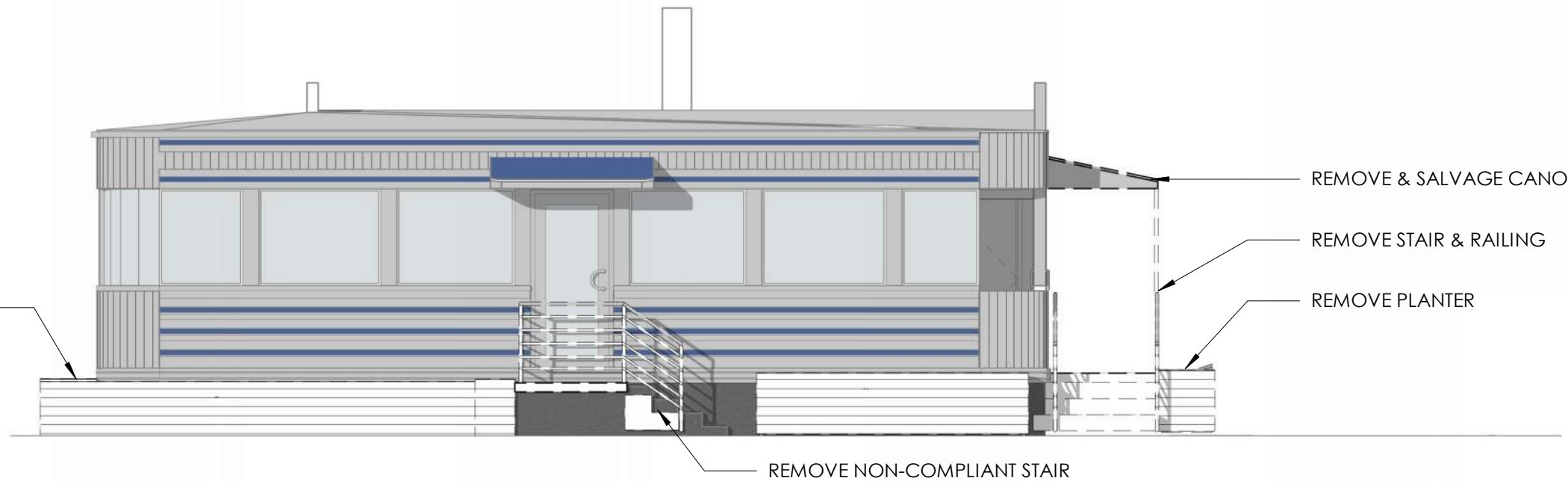
April 24th, 2024

# A3

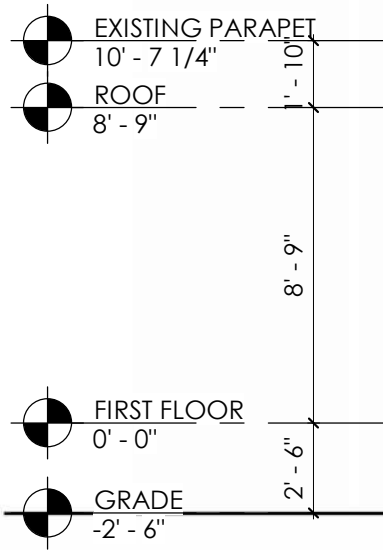




REMOVE PLANTERS



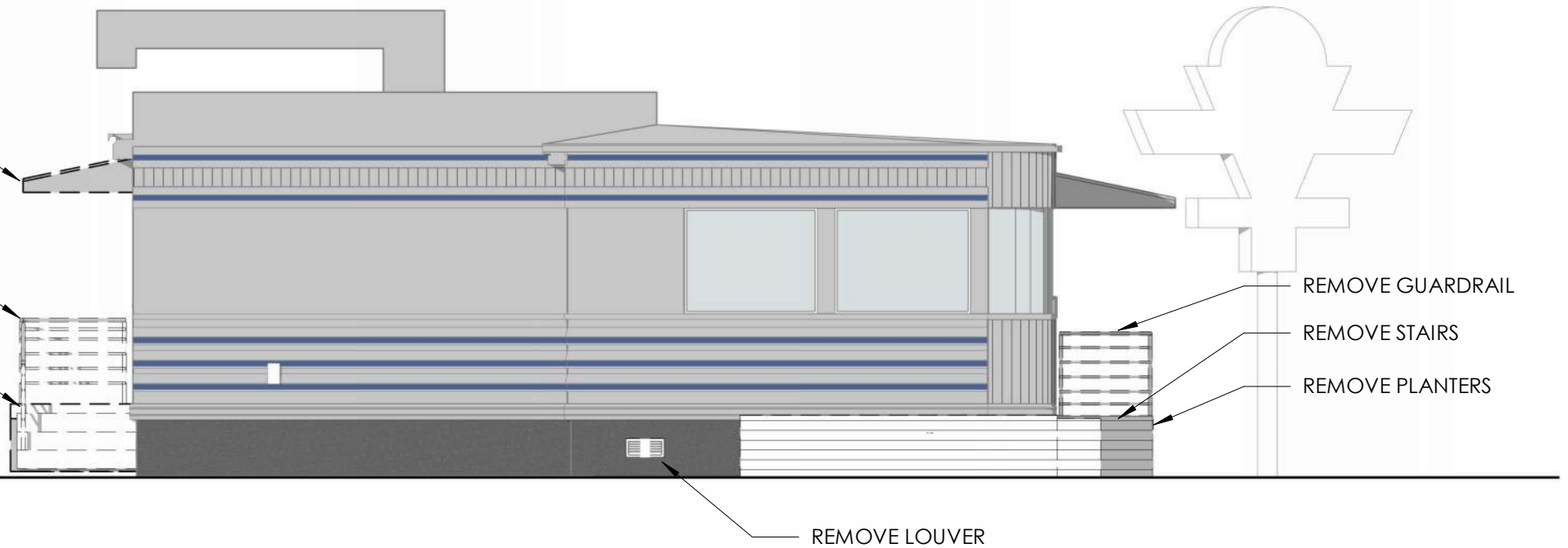
WEST ELEVATION



REMOVE CANOPY

REMOVE GUARDRAIL

REMOVE STAIRS



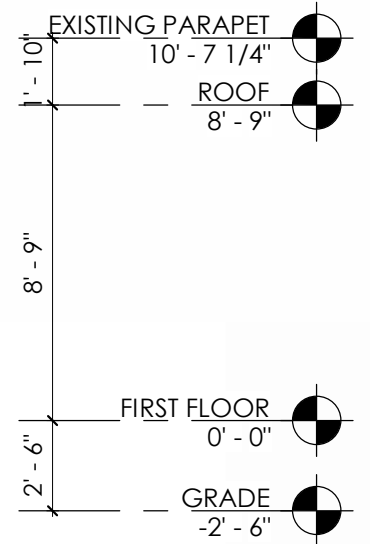
NORTH ELEVATION

SCALE: 3/16" = 1'-0"

REMOVE & SALVAGE  
CANOPY FOR RE-USE

REMOVE PLANTERS

REMOVE RAILING  
REMOVE PLANTER



SOUTH ELEVATION

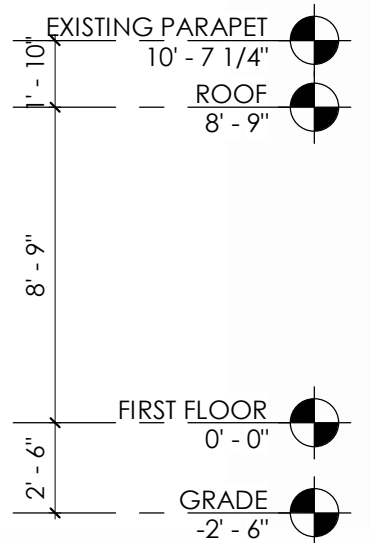
REMOVE ELECTRICAL BOXES

REMOVE & SALVAGE  
CANOPY FOR RE-USE

REMOVE PLANTER

REMOVE CANOPY

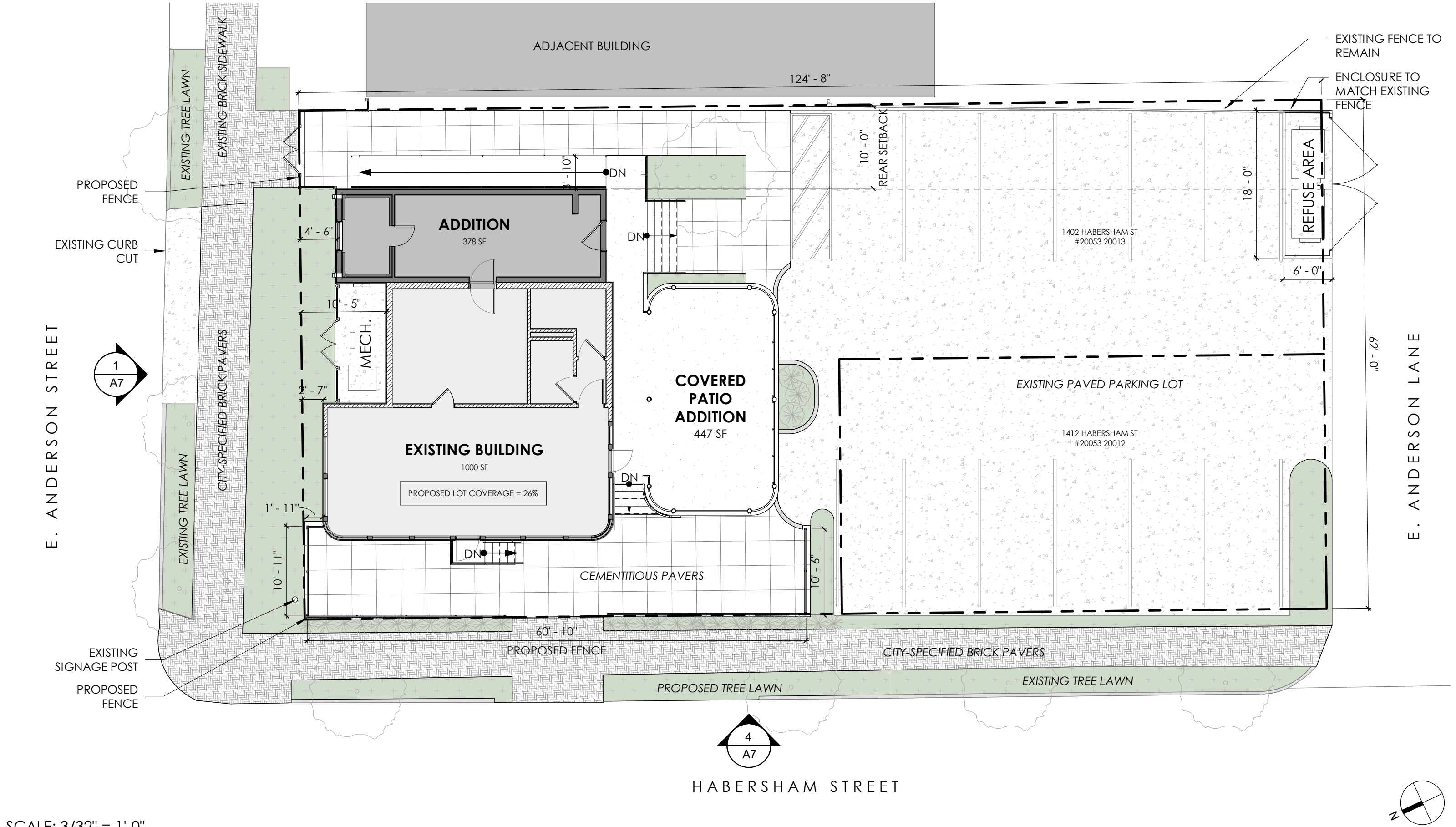
REMOVE PLANTERS



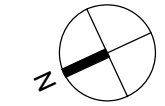
EAST ELEVATION

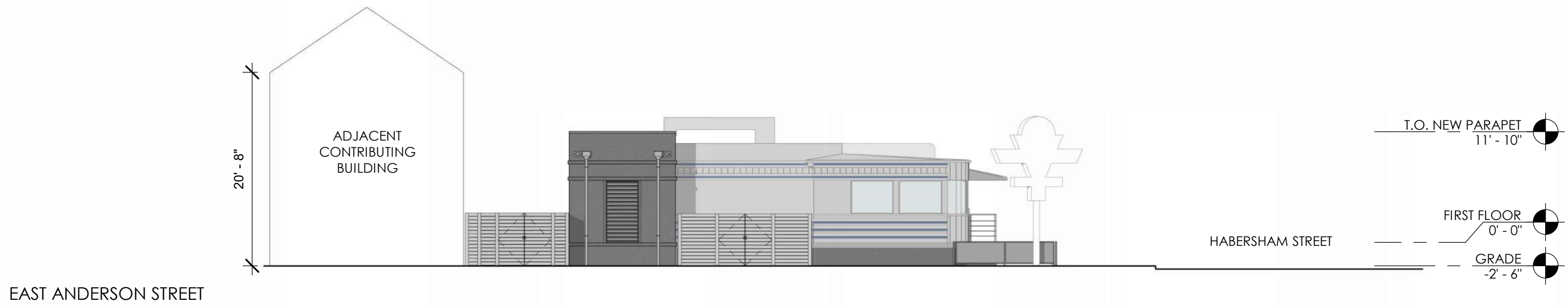
SCALE: 3/16" = 1'-0"



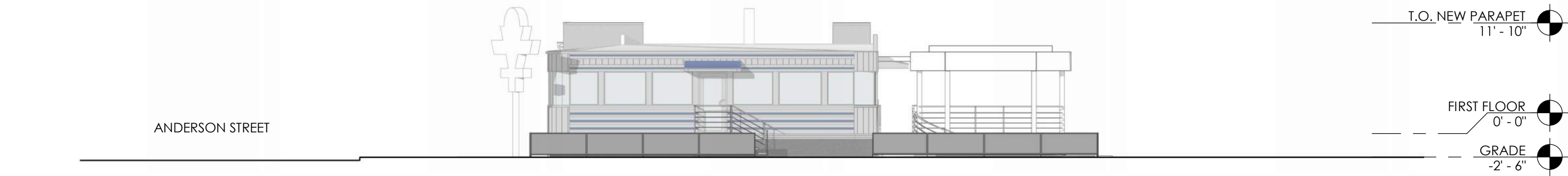


SCALE: 3/32" = 1'-0"





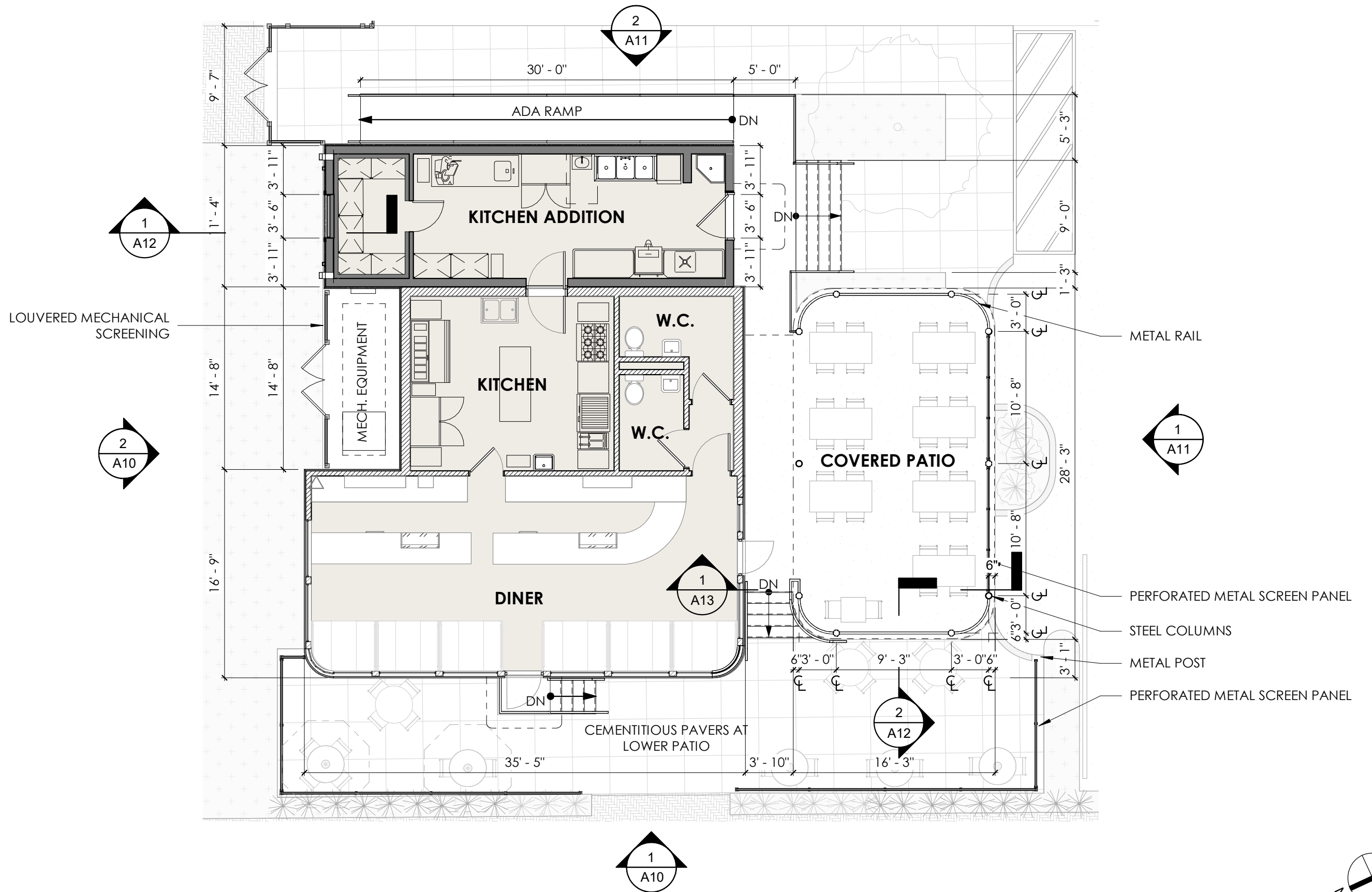
EAST ANDERSON STREET

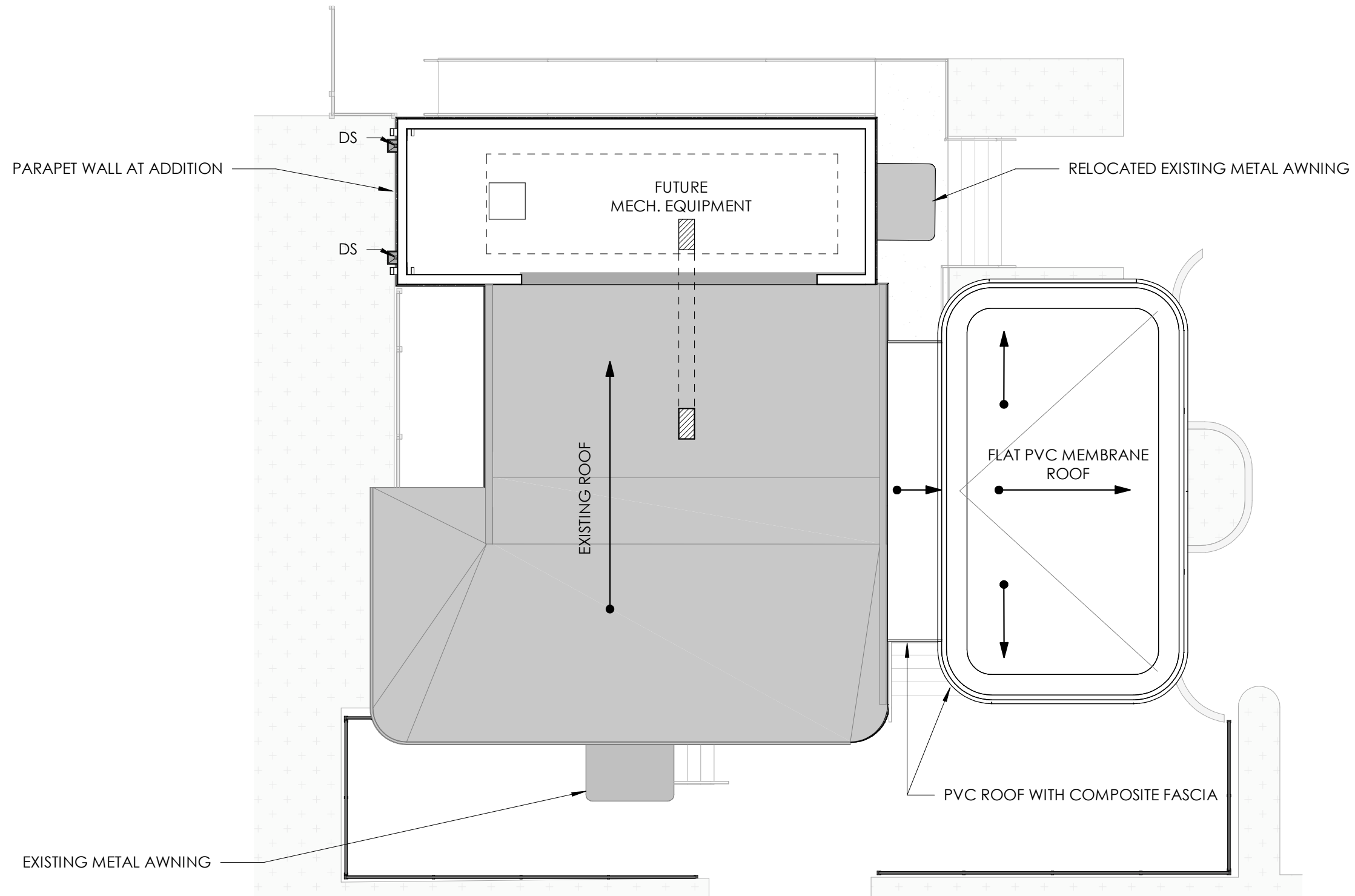


HABERSHAM STREET

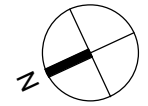
SCALE: 3/32" = 1'-0"



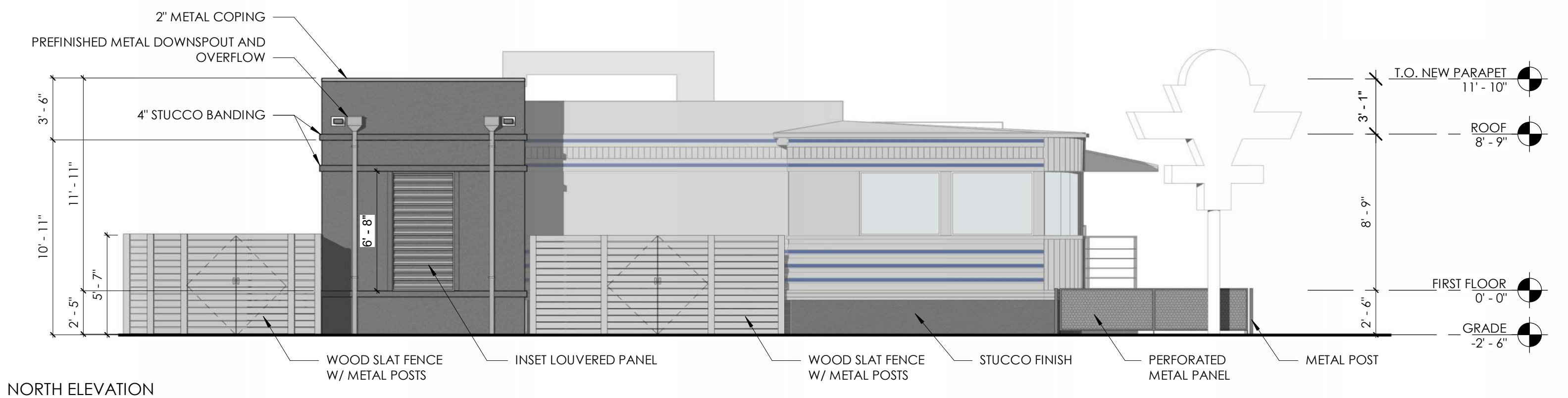
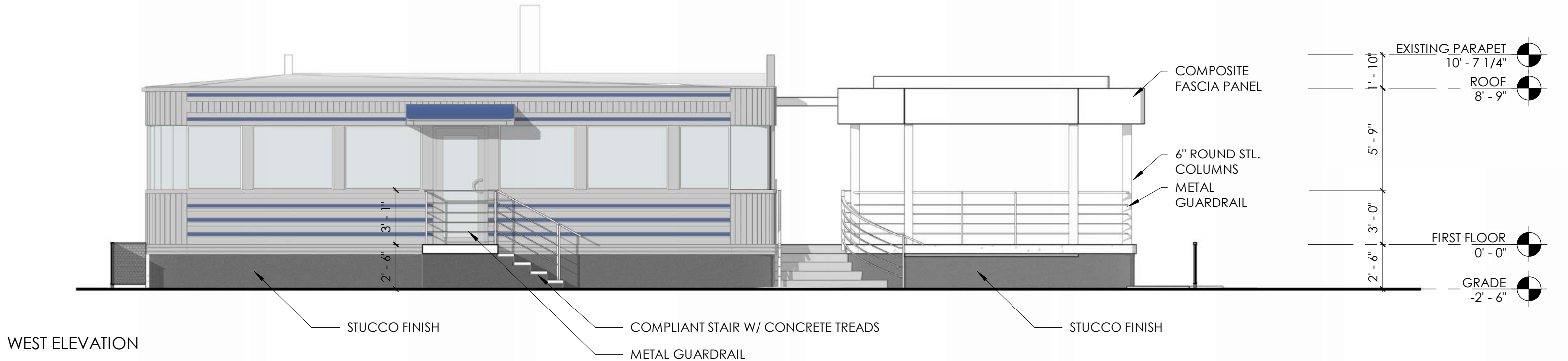




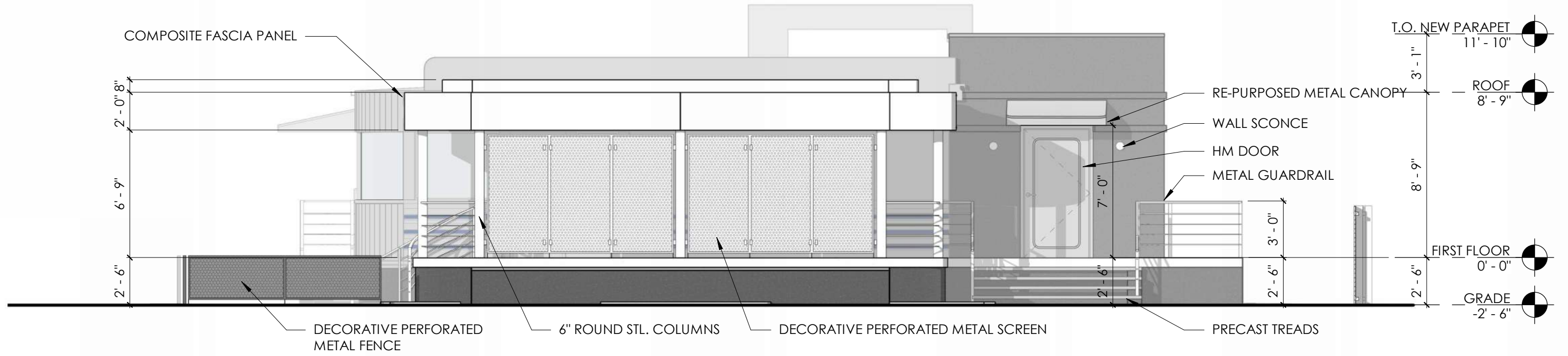
SCALE: 1/8" = 1'-0"



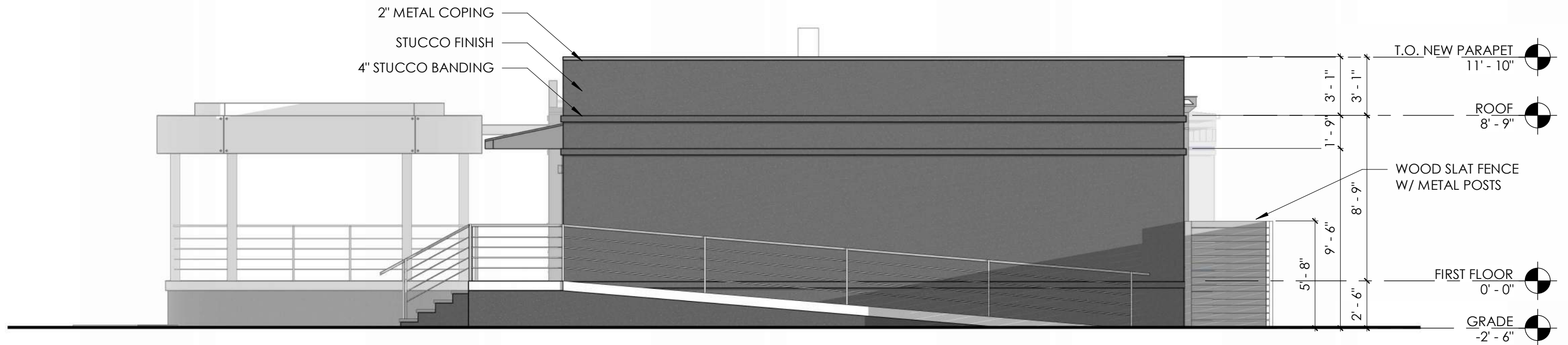




SCALE: 3/16" = 1'-0"

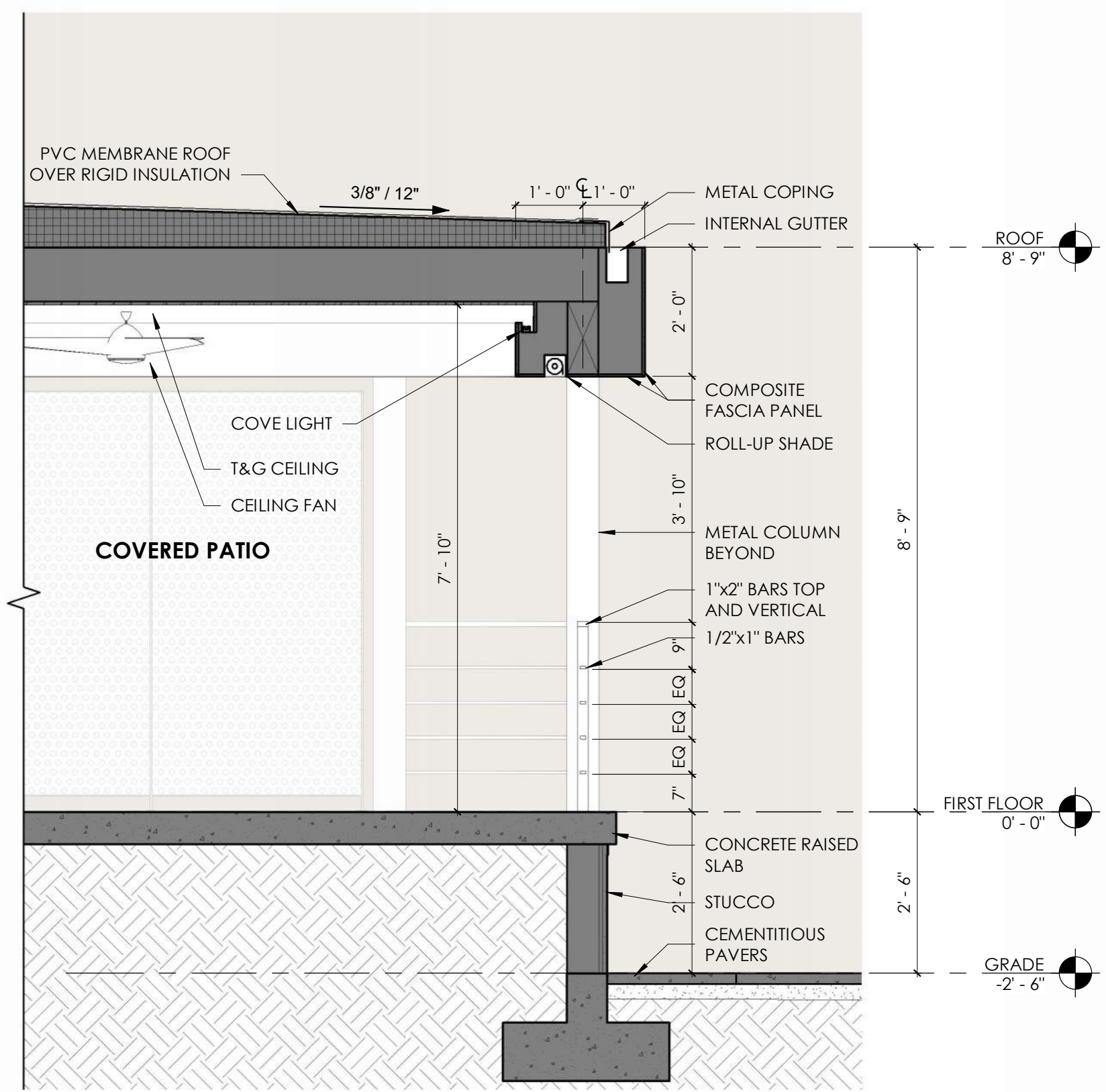
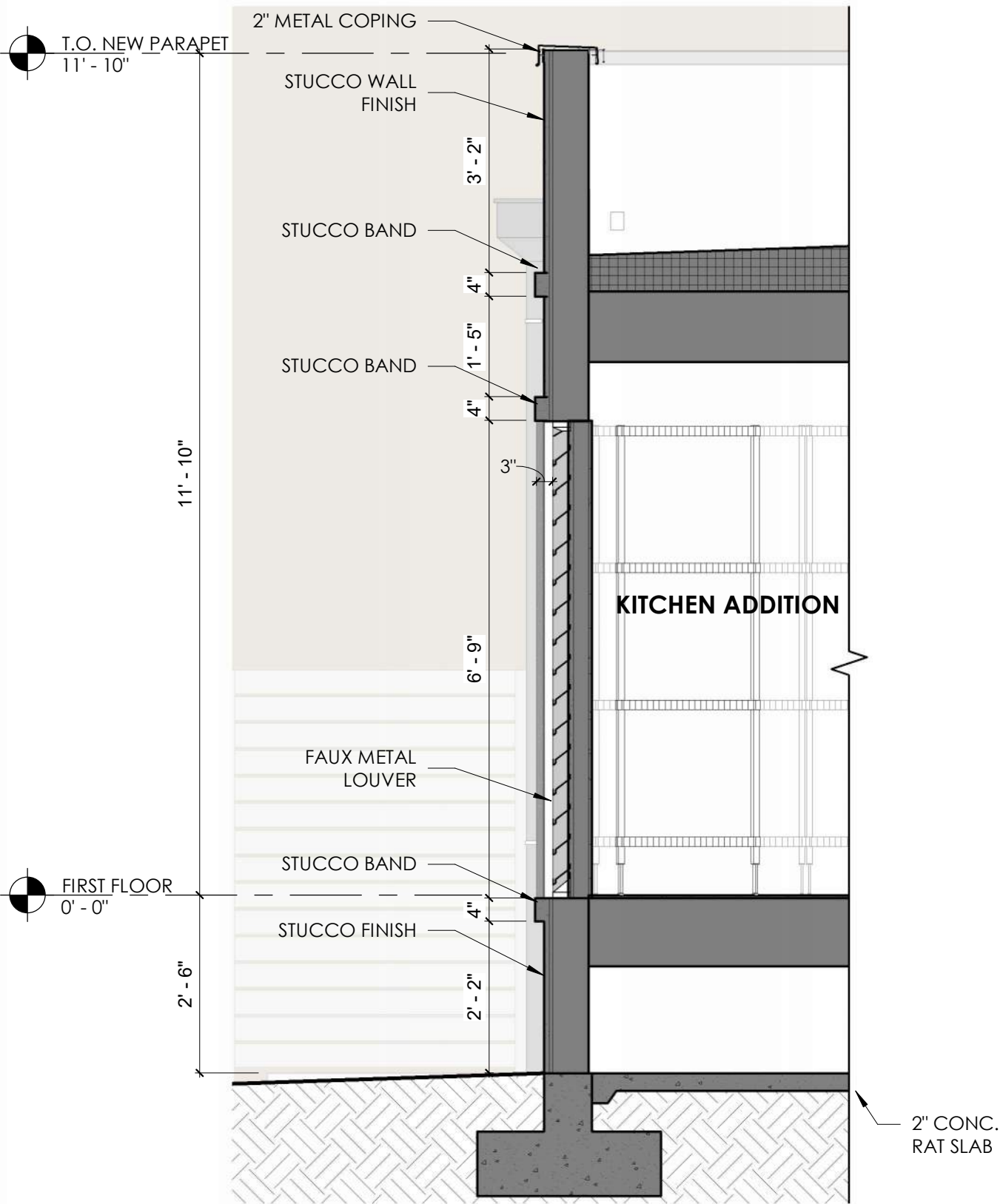


SOUTH ELEVATION



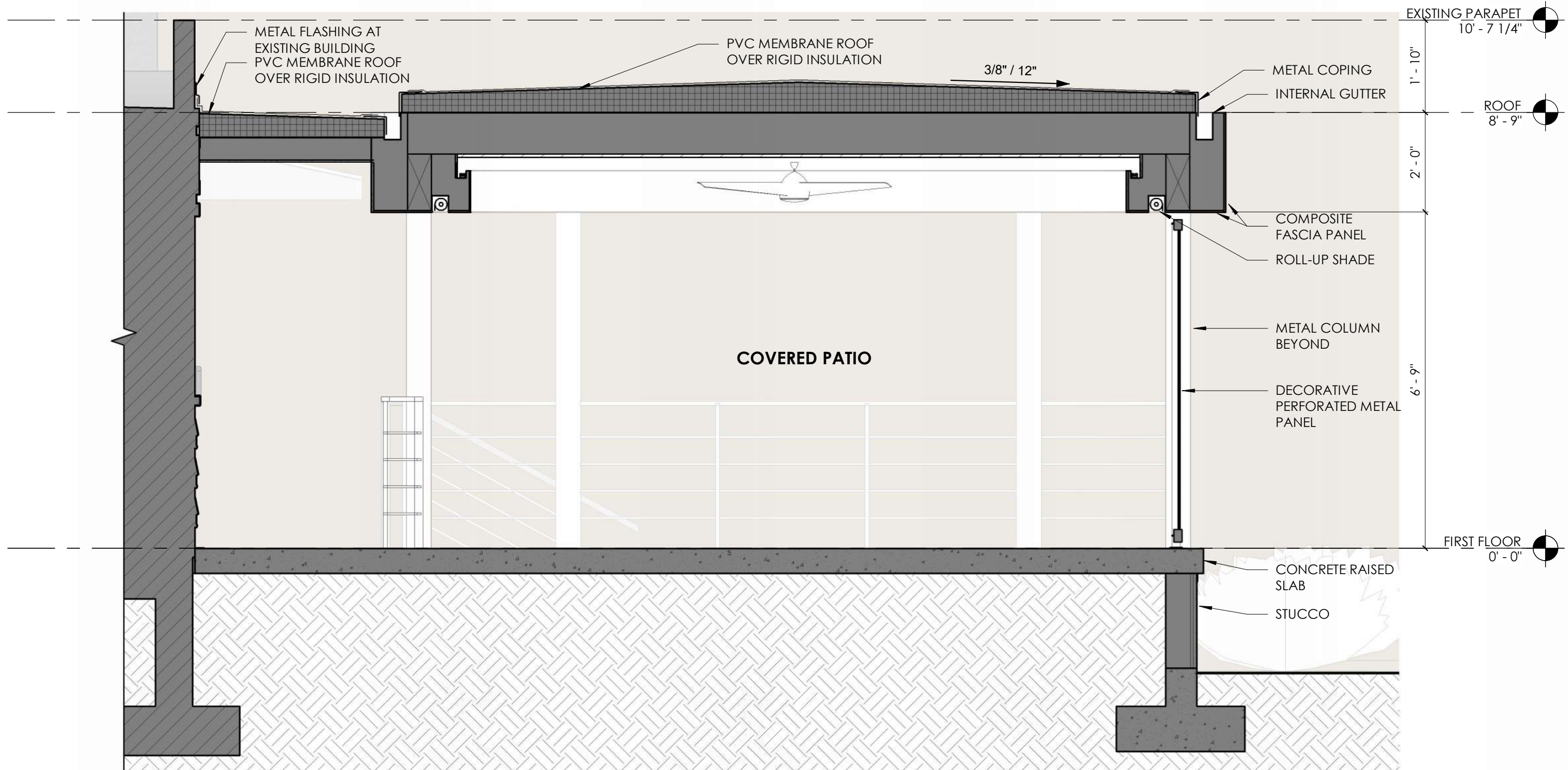
EAST ELEVATION

SCALE: 3/16" = 1'-0"



SCALE: 1/2" = 1'-0"





SCALE: 1/2" = 1'-0"





# 4375FD

## High Performance Stationary Louver | Drainable Blade Roll Formed Steel

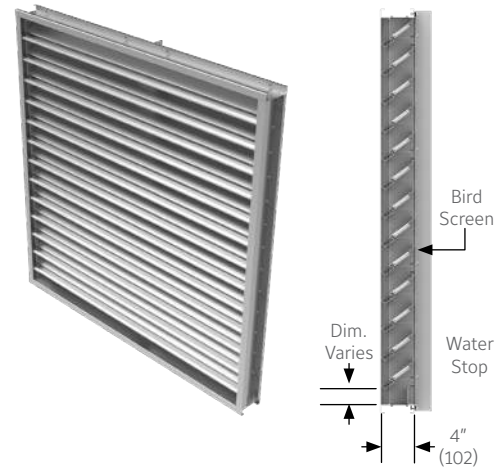
**RELIABLE**

### APPLICATION

The 4375FD is a high performance stationary louver with drainable blades and roll formed steel with economical galvanized steel construction. In addition, this louver has low pressure drop and water penetration with architecturally styled hidden mullions allowing for a continuous line appearance.

### STANDARD CONSTRUCTION

Frame	4" (102) deep, 16 (1.5) gauge galvanized steel.
Blades	16 (1.5) gauge galvanized steel. Drain able blades are positioned at 37 1/2° angle and spaced approximately 3 1/2" (89) center to center.
Screen	1/2" mesh x 19 (1.1) gauge galvanized bird screen in removable frame. Screen adds approximately 1/2" (13) to louver depth.
Finish	Mill.
Minimum Size	12"w x 12"h (305 x 305).
Approximate Shipping Weight	7 lbs. per sq. ft.
Maximum Factory Assembly Size	120"w x 90"h (3048 x 2286) or 90"w x 120"h (2286 x 3048). Louvers larger than the maximum factory assembly size will require field assembly of smaller sections.



### FEATURES

- Published performance ratings based on testing in accordance with AMCA Publication 511
- Beginning of water penetration at .01 oz/sq ft. is 961 fpm (274 m/min)
- Drain gutters in each blade and downspouts in jambs and mullions to drain water from louver for minimum water cascade from blade to blade.
- Economical galvanized steel construction
- 51% Free Area

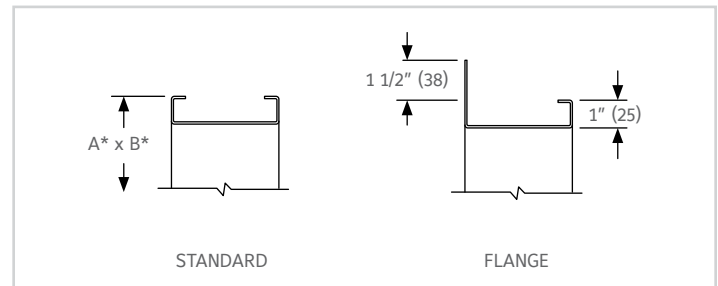
### VARIATIONS

Variations to the basic design of these louvers are available at additional cost. They include:

- Extended sill
- Stainless steel constructions
- Hinged frame
- Front or rear security bars
- Filter racks
- Single/double doors
- Blank off panels
- A variety of bird and insect screens
- Selection of finishes: baked enamel (modified fluoropolymer), epoxy, PVDF, Acrodize and Prime coat
- Selection of finishes: prime coat, 50% PVDF (modified fluoropolymer), epoxy, Pearledize, 70% PVDF, clear and color anodize. (Some variation in anodize color consistency is possible)

Consult Reliable for other special requirements.

### FRAME CONSTRUCTION



Note:

- Dimensions in inches, parenthesis ( ) indicate millimeters.
- Units can be furnished actual size or with size deducts.

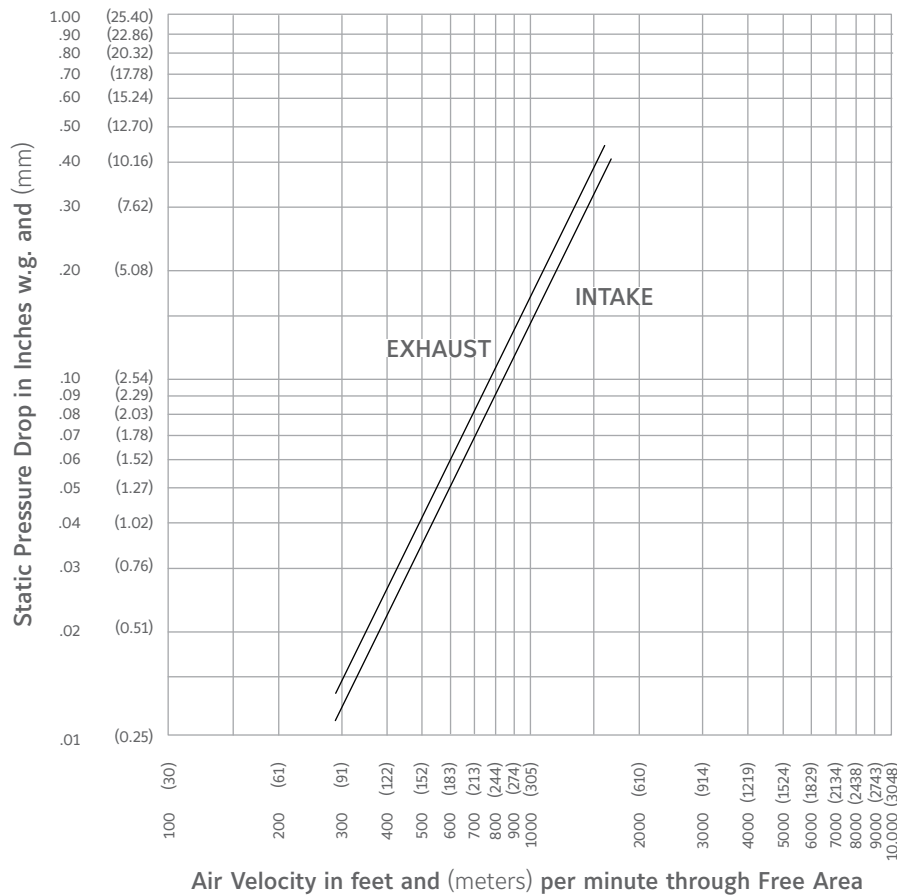


## FREE AREA GUIDE

Free Area Guide shows free area in ft<sup>2</sup> and m<sup>2</sup> for various sizes of 4375FD.

		Width – Inches and Meters																		
Height – Inches and Meters		12	18	24	30	36	42	48	54	60	66	72	78	84	90	96	102	108	114	120
		0.30	0.45	0.60	0.75	0.90	1.05	1.20	1.35	1.50	1.65	1.80	1.95	2.10	2.25	2.40	2.55	2.70	2.85	3.00
	12	0.28	0.45	0.62	0.79	0.96	1.13	1.30	1.47	1.64	1.81	1.98	2.15	2.32	2.49	2.66	2.83	3.00	3.17	3.34
	0.30	0.03	0.04	0.06	0.07	0.09	0.10	0.12	0.14	0.15	0.17	0.18	0.20	0.22	0.23	0.25	0.26	0.28	0.29	0.31
	18	0.52	0.84	1.16	1.48	1.80	2.11	2.43	2.75	3.07	3.39	3.71	4.03	4.35	4.67	4.99	5.31	5.63	5.94	6.26
	0.45	0.05	0.08	0.11	0.14	0.17	0.20	0.23	0.26	0.29	0.32	0.35	0.37	0.40	0.43	0.46	0.49	0.52	0.55	0.58
	24	0.76	1.23	1.70	2.17	2.63	3.10	3.57	4.04	4.51	4.98	5.44	5.91	6.38	6.85	7.32	7.79	8.25	8.72	9.19
	0.60	0.07	0.11	0.16	0.20	0.24	0.29	0.33	0.38	0.42	0.46	0.51	0.55	0.59	0.64	0.68	0.72	0.77	0.81	0.85
	30	1.00	1.62	2.24	2.86	3.47	4.09	4.71	5.33	5.94	6.56	7.18	7.80	8.41	9.03	9.65	10.27	10.88	11.50	12.12
	0.75	0.09	0.15	0.21	0.27	0.32	0.38	0.44	0.50	0.55	0.61	0.67	0.72	0.78	0.84	0.90	0.95	1.01	1.07	1.13
	36	1.27	2.05	2.83	3.61	4.39	5.17	5.95	6.74	7.52	8.30	9.08	9.86	10.64	11.42	12.20	12.98	13.76	14.54	15.32
	0.90	0.12	0.19	0.26	0.34	0.41	0.48	0.55	0.63	0.70	0.77	0.84	0.92	0.99	1.06	1.13	1.21	1.28	1.35	1.43
	42	1.51	2.44	3.37	4.30	5.23	6.16	7.09	8.02	8.95	9.88	10.81	11.74	12.67	13.60	14.53	15.46	16.39	17.32	18.25
	1.05	0.14	0.23	0.31	0.40	0.49	0.57	0.66	0.75	0.83	0.92	1.01	1.09	1.18	1.26	1.35	1.44	1.52	1.61	1.70
	48	1.75	2.83	3.91	4.99	6.07	7.15	8.23	9.31	10.39	11.47	12.55	13.62	14.70	15.78	16.86	17.94	19.02	20.10	21.18
	1.20	0.16	0.26	0.36	0.46	0.56	0.66	0.77	0.87	0.87	1.07	1.17	1.27	1.37	1.47	1.57	1.67	1.77	1.87	1.97
	54	2.00	3.22	4.45	5.68	6.91	8.14	9.37	10.59	11.82	13.05	14.28	15.51	16.74	17.96	19.19	20.42	21.65	22.88	24.11
	1.35	0.19	0.30	0.41	0.53	0.64	0.76	0.87	0.99	1.10	1.21	1.33	1.44	1.56	1.67	1.78	1.90	2.01	2.13	2.24
	60	2.24	3.62	4.99	6.37	7.75	9.13	10.50	11.88	13.26	14.64	16.01	17.39	18.77	20.15	21.52	22.90	24.28	25.66	27.03
	1.50	0.21	0.34	0.46	0.59	0.72	0.85	0.98	1.10	1.23	1.36	1.49	1.62	1.75	1.87	2.00	2.13	2.26	2.39	2.51
	66	2.50	4.04	5.59	7.13	8.67	10.21	11.75	13.29	14.83	16.37	17.91	19.45	20.99	22.54	24.08	25.62	27.16	28.70	30.24
	1.65	0.23	0.38	0.52	0.66	0.81	0.95	1.09	1.24	1.38	1.52	1.67	1.81	1.95	2.10	2.24	2.38	2.53	2.67	2.81
	72	2.75	4.44	6.13	7.82	9.51	11.20	12.89	14.58	16.27	17.96	19.65	21.34	23.03	24.72	26.41	28.10	29.79	31.48	33.17
	1.80	0.26	0.41	0.57	0.73	0.88	1.04	1.20	1.36	1.51	1.67	1.83	1.98	2.14	2.30	2.46	2.61	2.77	2.93	3.08
	78	2.99	4.83	6.67	8.51	10.35	12.18	14.02	15.86	17.70	19.54	21.38	23.22	25.06	26.90	28.74	30.58	32.42	34.25	36.09
	1.95	0.28	0.45	0.62	0.79	0.96	1.13	1.30	1.48	1.65	1.82	1.99	2.16	2.33	2.50	2.67	2.84	3.01	3.19	3.36
	84	3.23	5.22	7.21	9.20	11.18	13.17	15.16	17.15	19.14	21.13	23.11	25.10	27.09	29.08	31.07	33.06	35.04	37.03	39.02
	2.10	0.30	0.49	0.67	0.86	1.04	1.23	1.41	1.59	1.78	1.96	2.15	2.33	2.52	2.70	2.89	3.07	3.26	3.44	3.63
	90	3.50	5.65	7.80	9.95	12.10	14.26	16.41	18.56	20.71	22.86	25.01	27.17	29.32	31.47	33.62	35.77	37.92	40.08	42.23
	2.25	0.33	0.53	0.73	0.93	1.13	1.33	1.53	1.73	1.93	2.13	2.33	2.53	2.73	2.93	3.13	3.33	3.53	3.73	3.93
	96	3.74	6.04	8.34	10.64	12.94	15.24	17.54	19.85	22.15	24.45	26.75	29.05	31.35	33.65	35.95	38.25	40.55	42.85	45.16
	2.40	0.35	0.56	0.78	0.99	1.20	1.42	1.63	1.85	2.06	2.27	2.49	2.70	2.92	3.13	3.34	3.56	3.77	3.99	4.20
	102	3.98	6.43	8.88	11.33	13.78	16.23	18.68	21.13	23.58	26.03	28.48	30.93	33.38	35.83	38.28	40.73	43.18	45.63	48.08
	2.55	0.37	0.60	0.83	1.05	1.28	1.51	1.74	1.97	2.19	2.42	2.65	2.88	3.10	3.33	3.56	3.79	4.02	4.24	4.47
	108	4.22	6.82	9.42	12.02	14.62	17.22	19.82	22.42	25.02	27.62	30.22	32.81	35.41	38.01	40.61	43.21	45.81	48.41	51.01
	2.70	0.39	0.63	0.88	1.12	1.36	1.60	1.84	2.08	2.33	2.57	2.81	3.05	3.29	3.54	3.78	4.02	4.26	4.50	4.74
	114	4.49	7.25	10.01	12.78	15.54	18.30	21.07	23.83	26.59	29.35	32.12	34.88	37.64	40.40	43.17	45.93	48.69	51.45	54.22
	2.85	0.42	0.67	0.93	1.19	1.45	1.70	1.96	2.22	2.47	2.73	2.99	3.24	3.50	3.76	4.01	4.27	4.53	4.79	5.04
	120	4.73	7.64	10.56	13.47	16.38	19.29	22.20	25.11	28.03	30.94	33.85	36.76	39.67	42.58	45.50	48.41	51.32	54.23	57.14
	3.00	0.44	0.71	0.98	1.25	1.52	1.79	2.06	2.34	2.61	2.88	3.15	3.42	3.69	3.96	4.23	4.50	4.77	5.04	5.31

## PRESSURE DROP



Ratings do not include the effect of a bird screen.

## WATER PENETRATION GRAPH

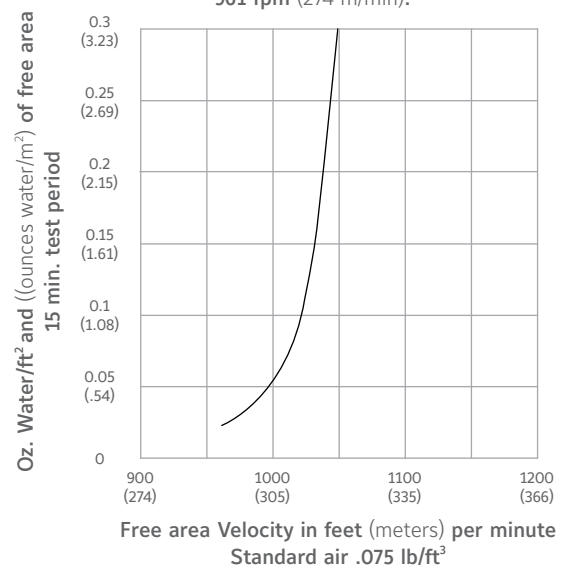
AMCA Standard 500 provides a reasonable basis for testing and rating louvers. Testing to AMCA 500 is performed under a certain set of laboratory conditions. This does not guarantee that other conditions will not occur in the actual environment where louvers must operate.

The louver system should be designed with a reasonable safety factor for louver performance. To ensure protection from water carry-over, design with a performance level somewhat below maximum desired pressure drop and .01 oz./sq. ft. of water penetration.



Reliable Products certifies that the 4375FD Louvers shown herein are licensed to bear the AMCA Seal. The ratings shown are based on tests and procedures performed in accordance with AMCA Publication 511 and comply with the requirements of the AMCA Certified Ratings Program. The AMCA Certified Ratings Seal applies to air performance ratings and water penetration ratings only.

Test size 48" wide X 48" high (1219 X 1219)  
Beginning point of water penetration at .01 oz. /sq. ft. is  
961 fpm (274 m/min).



SUGGESTED SPECIFICATION

Furnish and install louvers as hereinafter specified where shown on plans or as described in schedules. Louvers shall be stationary drainable type entirely contained within a 4" (102) frame. Louvers shall include a drain gutter in each blade and downspouts in jambs and mullions. Louver components (heads, jambs, sills, blades, and mullions) shall be factory assembled by the louver manufacturer. Louver sizes too large for shipping shall be built up by the contractor from factory assembled louver sections to provide overall sizes required. Louver design shall limit span between visible mullion to 10 (3) feet and shall incorporate structural supports required to withstand a wind load of 30 lbs. per sq. ft. (1.44kPa) equivalent of a 110 mph (177 kph) wind - specifier may substitute any loading required).

Louvers shall be Reliable Model 4375FD construction as follows:

- Frame: 16 gauge (1.5) galvanized steel.
- Blades: 16 gauge (1.5) galvanized steel at 37 1/2° angle on approximate 3 1/2" (89) centers.
- Screen: 19 gauge (1.1) galvanized 1/2" (13) mesh screen.
- Finish: Select finish specification from Reliable Finishes Brochure.

Published louver performance data bearing the AMCA Certified Ratings Seal for Air Performance & Water Penetration must be submitted for approval prior to fabrication and must demonstrate pressure drop and water penetration equal to or less than the Reliable model specified.

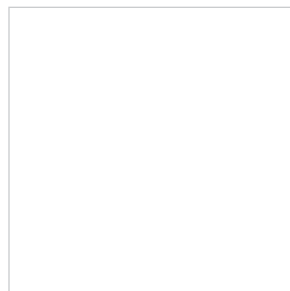
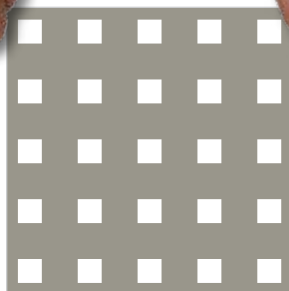
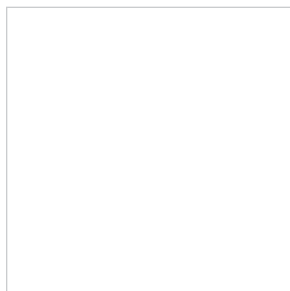
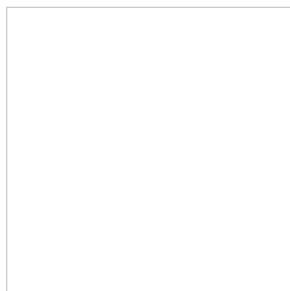
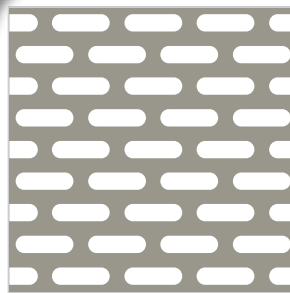
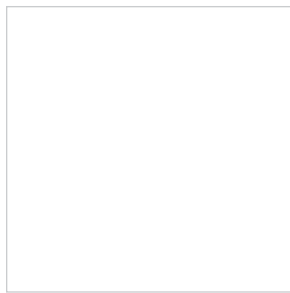
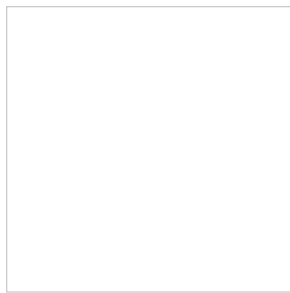
LINKS TO IMPORTANT DOCUMENTS

Document Title
Finishes and Color Guide
Limited Warranty Document

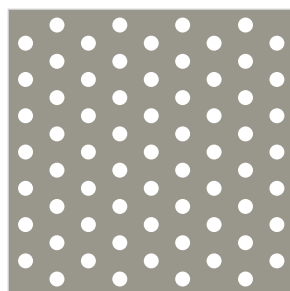
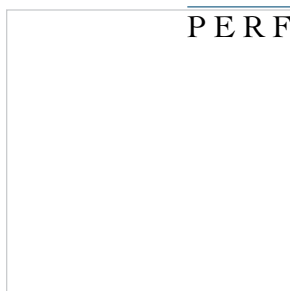
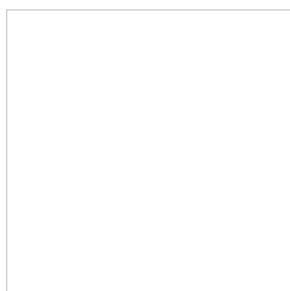
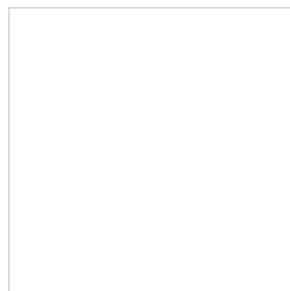
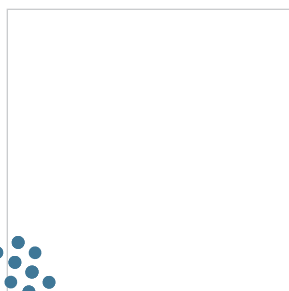
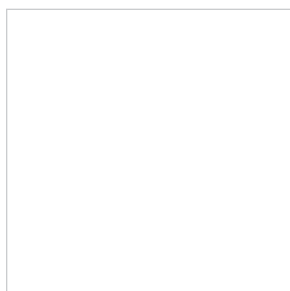
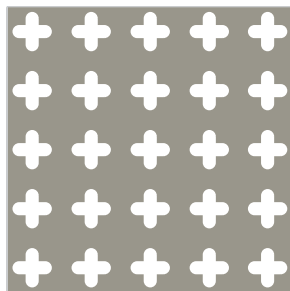


1300 Enterprise Road, P.O. Box  
580, Geneva, Alabama 36340  
Tel: 334-684-3621  
Tel: 800-624-3914  
Fax: 800-508-1469





# architectural applications

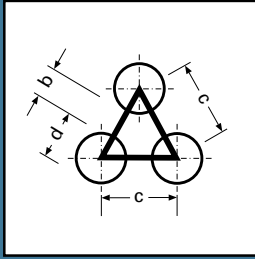


Accurate Perforating is a leader in providing perforated materials to OEM manufacturers and the architectural design industry. As the use of perforated materials broadens in building construction,

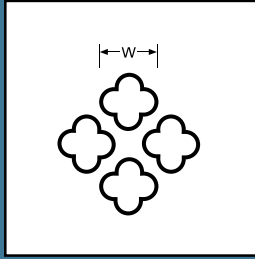
architects across the country

collaborate with Accurate daily for fresh ideas and leading-edge technology. Our partnerships with designers have introduced the use of new materials and fabrication methods in industrial, commercial and residential buildings.

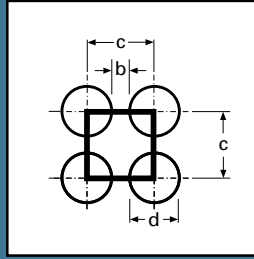




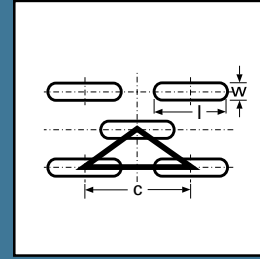
round holes staggered



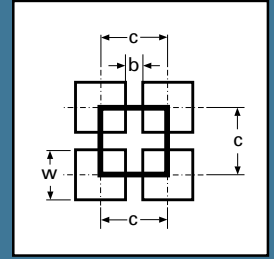
ornamental holes



round holes straight



slot holes



square holes

Buildings all over the world benefit from the shade provided by perforated sunscreens. In addition, where unsightly parking garages, HVAC units, trash dumpsters, roadways and more are in view, perforated metal is the right choice given the variety of materials available and its durability from the weather, graffiti, and general wear and tear.

# sunscreens



For more information, or to request samples, please visit  
[www.accurateperforating.com](http://www.accurateperforating.com) or call us at 1.800.621.0273.





# staircases







From lightweight decorative elements and balcony railings to load-bearing structural components, we are prepared to work within your design aesthetic and engineering requirements.

# decorative elements

For more information, or to request samples, please visit  
[www.accurateperforating.com](http://www.accurateperforating.com) or call us at 1.800.621.0273.





# facades

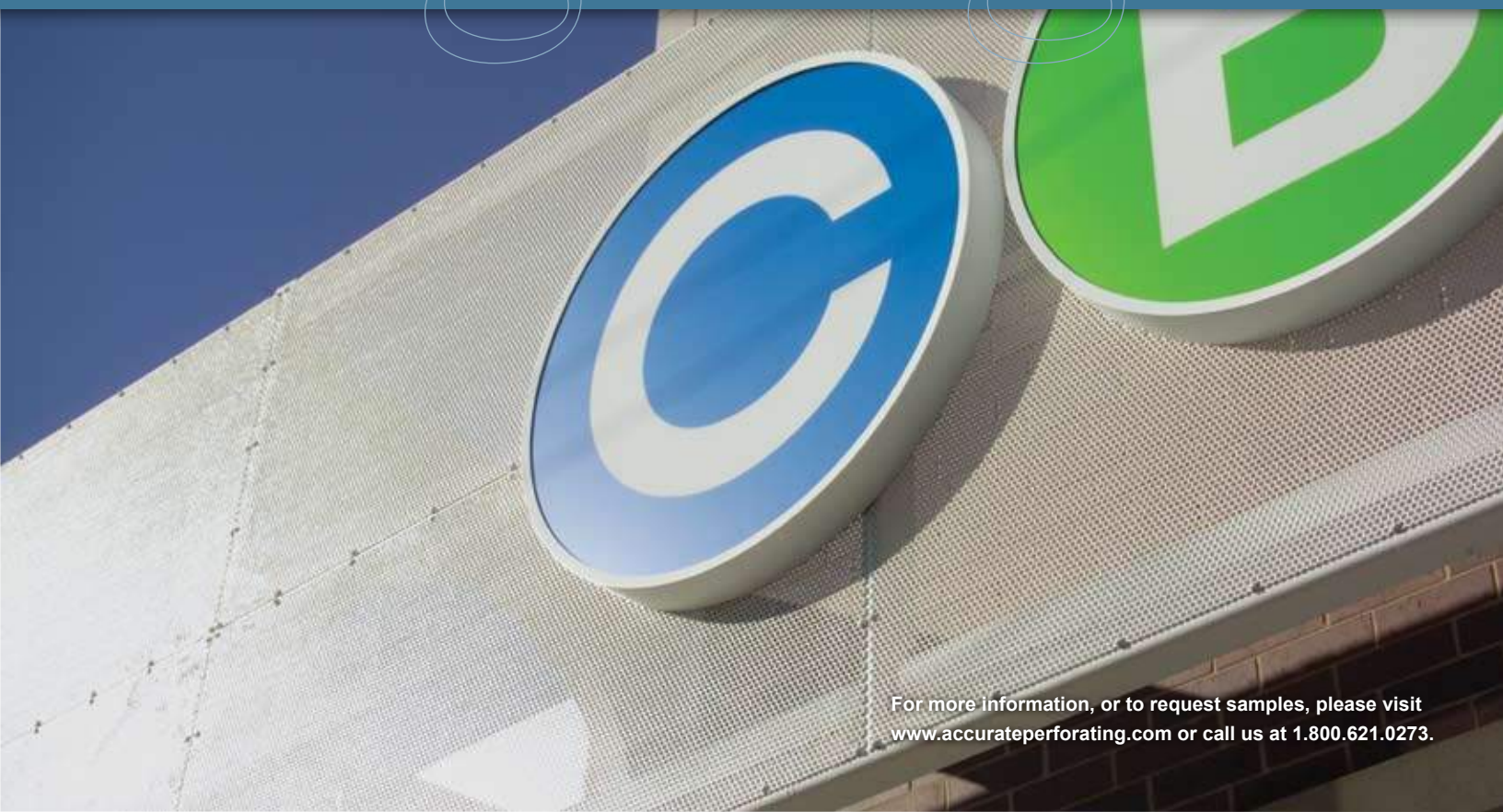






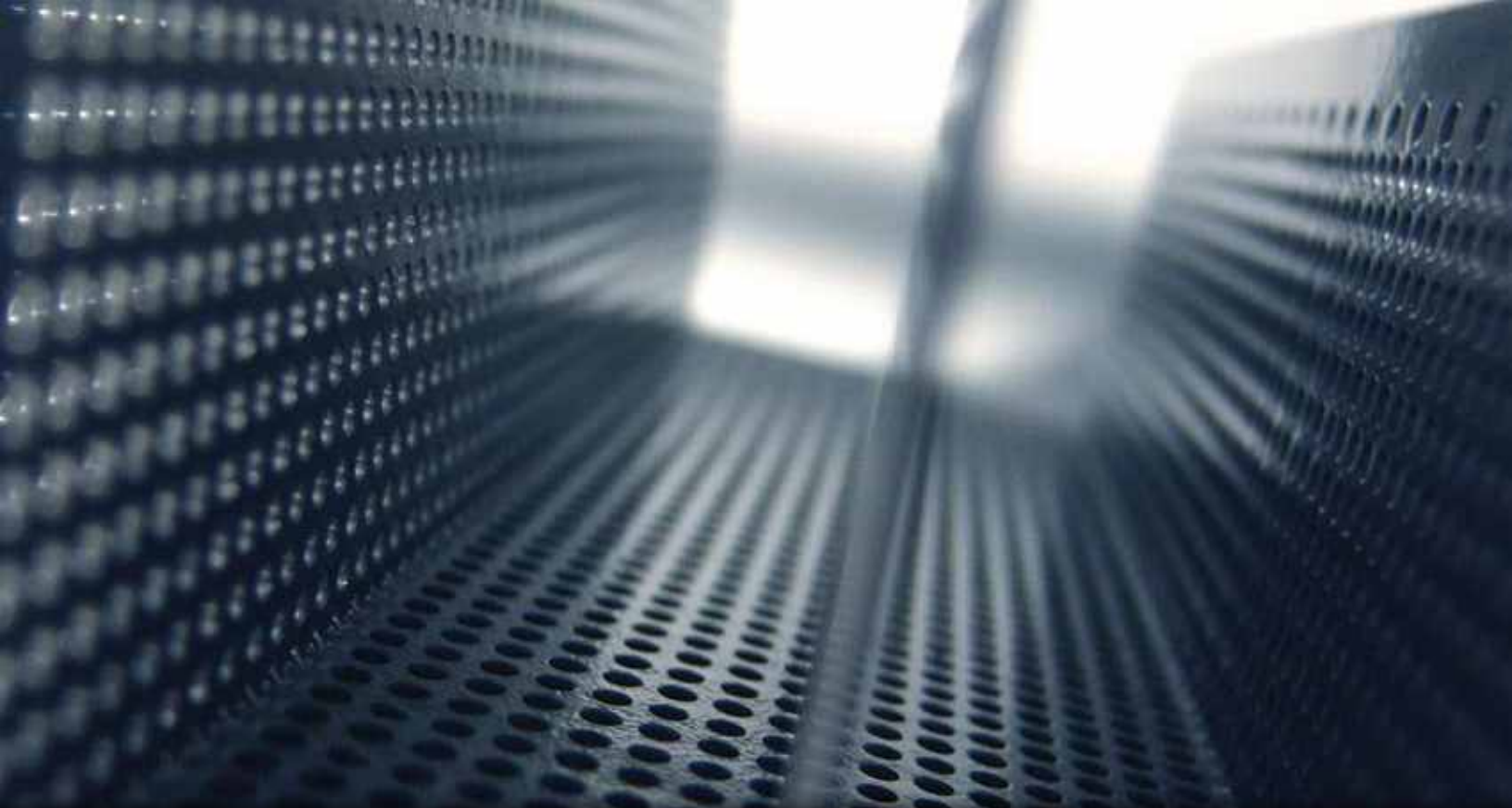
Perforated metal is formed and installed in many places to aid in noise abatement. Airport ceilings, swimming pools, gyms, concert halls, even subways benefit from our collaboration with acoustical designers.

# signage

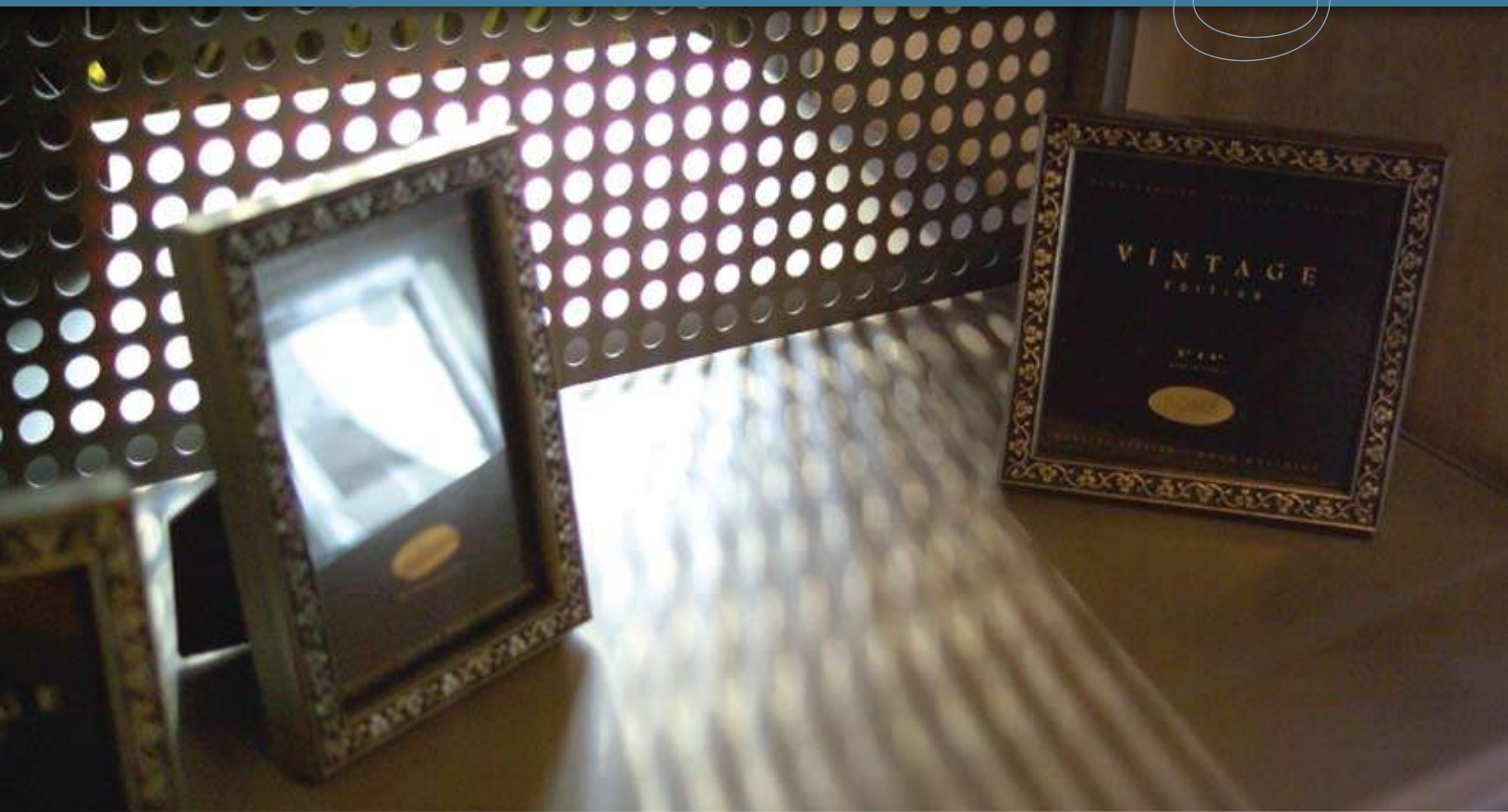


For more information, or to request samples, please visit  
[www.accurateperforating.com](http://www.accurateperforating.com) or call us at 1.800.621.0273.





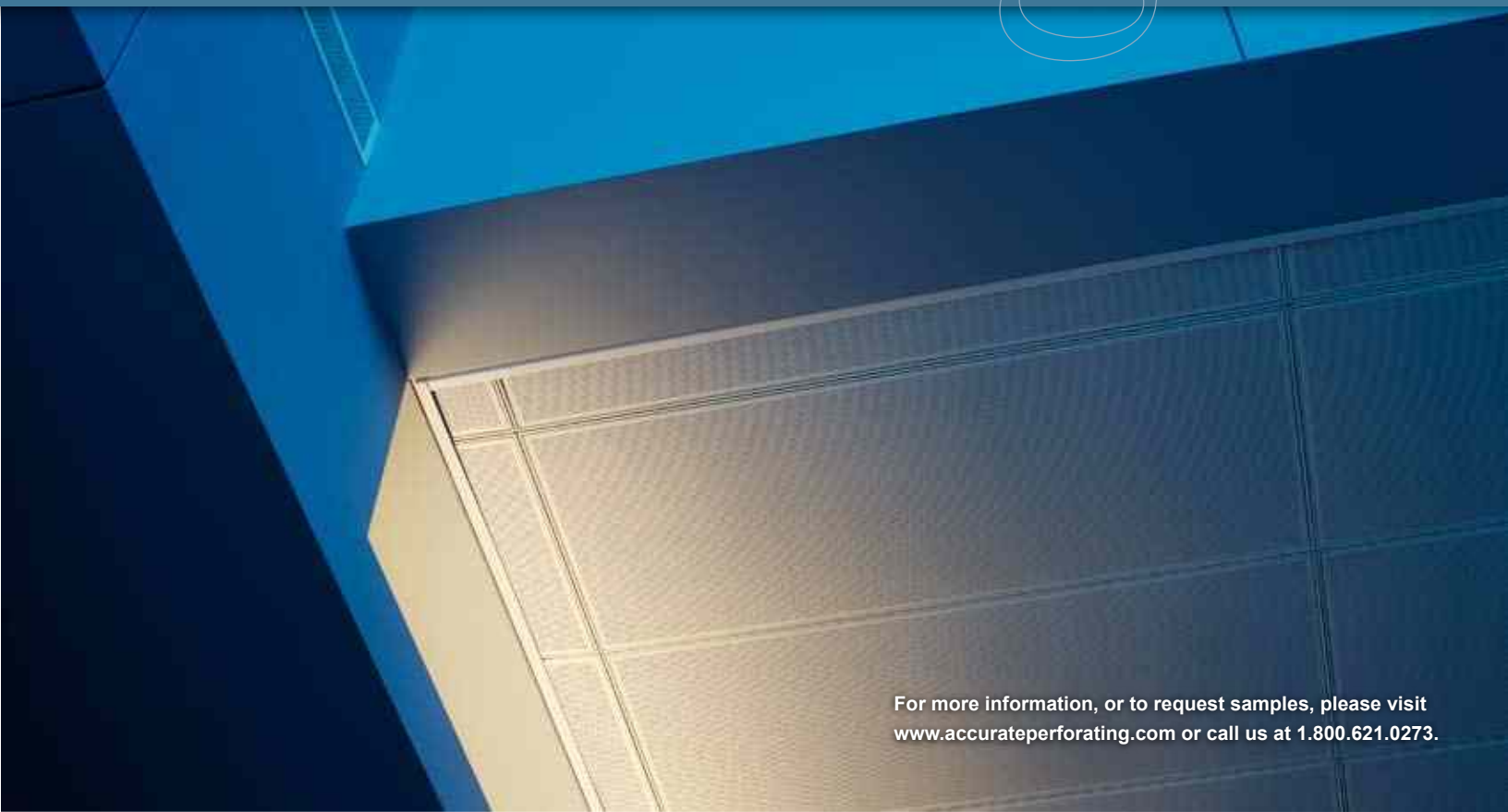
# shelving






Our materials are used in a wide range of interior applications for residential and commercial use, including railings, privacy screens, sunscreens, seating and lighting enclosures. Perforated elements provide the perfect balance between strength and lightness.

# ceilings



For more information, or to request samples, please visit  
[www.accurateperforating.com](http://www.accurateperforating.com) or call us at 1.800.621.0273.





We work with AutoCAD or PDF files via email to provide a clear channel of communication. Difficult projects are our engineering staff's bread and butter, and an open dialogue about concepts, methods and materials is our ultimate goal. You will find us accessible, forthcoming and enthusiastic about your most demanding projects. **For more information, or to request samples, please visit [www.accurateperforating.com](http://www.accurateperforating.com) or call us at 1.800.621.0273.**

# railings



# Fabricating.



## mounting holes

Rather than drilling or using the existing perforations to attach perforated panels to a frame or structure we can selectively place mounting holes, slots or other features in solid margin areas. The photo shows a recessed mounting hole being used so that the head of the wood screw used would mount flush against the perforated part.



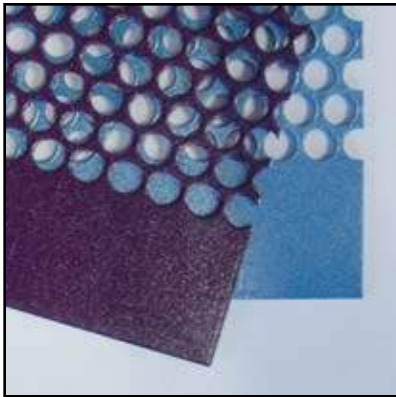
## corrugating

Corrugating is the process of forming or ribbing a flat sheet of material into a consistent, symmetrical profile to increase that material's strength to weight ratio up to 30% over the conventional material. The profiles available to your application depend upon your perforation pattern, material thickness, and material type. Minimum orders apply.



## forming and radiusing

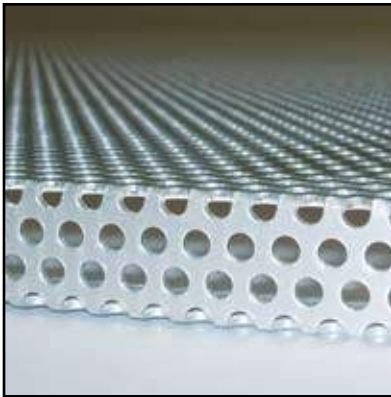
Simple 90 degree bends or more complex forms can be added to assist with framing or where sharp edge safety is a concern. Certain sizes of panels can also be radius rolled as shown when your design does not lend itself to flat panels.



## powder coating

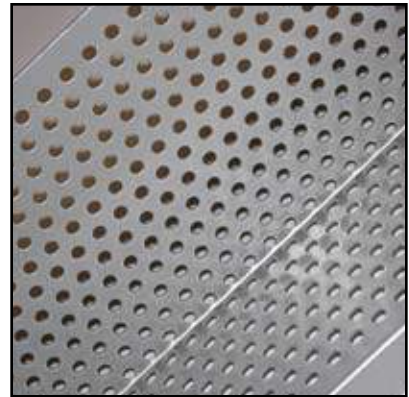
Powder coating is the technique of applying dry paint to a part. The final cured coating is the same as a 2-pack wet paint. In normal wet painting such as house paints, the solids are in suspension in a liquid carrier, which must evaporate before the solid paint coating is produced.

In powder coating, the powdered paint is electrostatically charged and sprayed onto the part. The part is then placed in an oven and the powder particles melt and coalesce to form a continuous film. A variety of powder types and colors are available. Custom colors can be matched.



## anodizing

Anodizing is the deposition of a thin film of synthetic oxide on a light metal, such as aluminum, to prevent the further access of air to the surface, preserving the luster and preventing corrosion. The article is made to anode in a 3% solution of chromic acid at about 104 degrees F. The voltage is gradually increased to a maximum of 50 volts and the process may take an hour. Sulphuric and oxalic acid processes are also used, and the anodic film may be dyed various colors.



## Kynar®

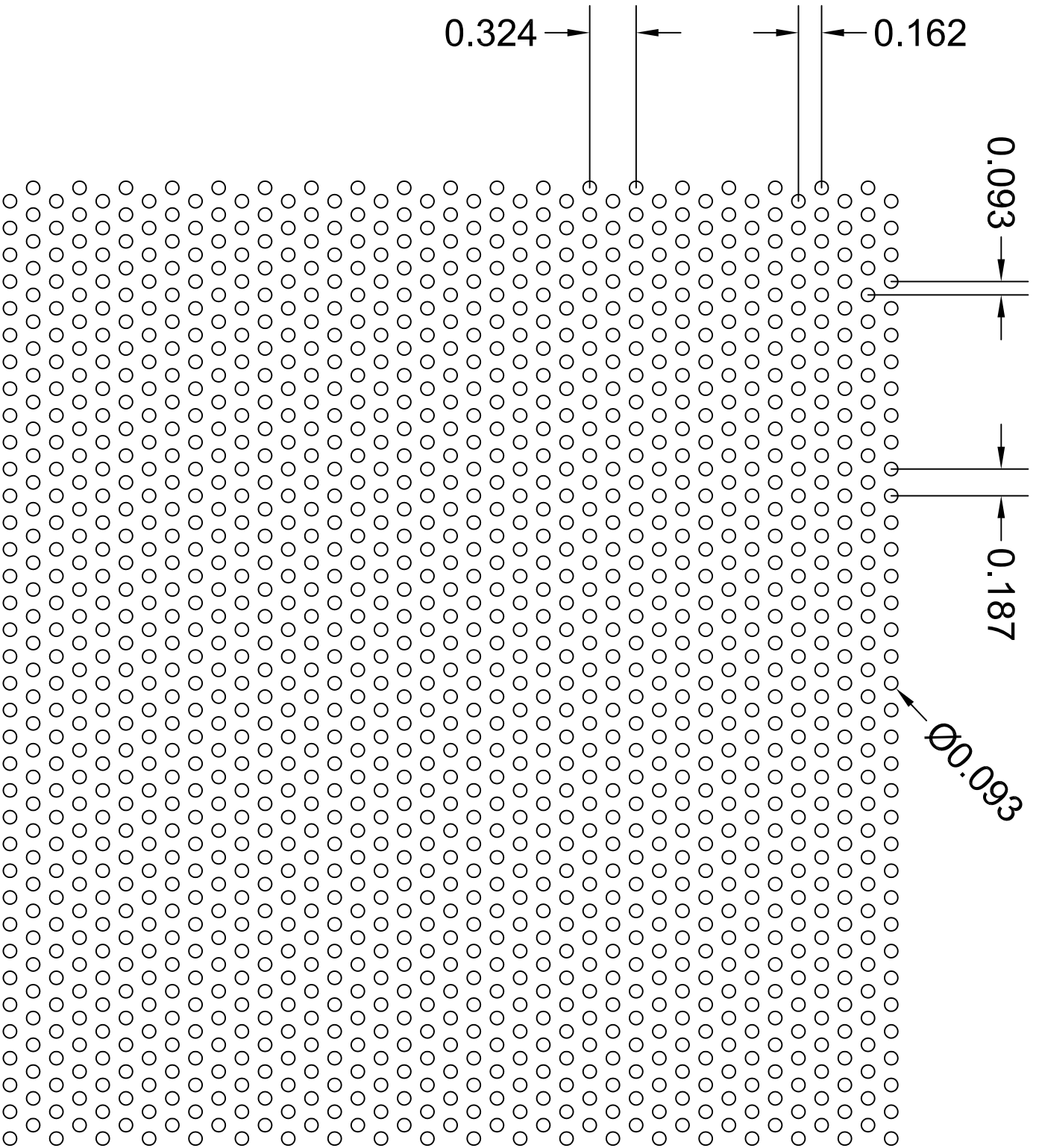
For more than 30 years, finishes based on Kynar 500® PVDF resin have helped protect commercial, industrial, and residential buildings around the world. Kynar 500® is a special grade of PVDF resin used by licensed industrial paint manufacturers as the base resin in long-life coatings for aluminum, galvanized steel, and aluminized steel in applications such as metal roofing and siding, window and door frames, curtain wall and other miscellaneous metal trim and components. Custom color matching is available in addition to a number of standard colors. (Part shown in silver.)

# Finishing.

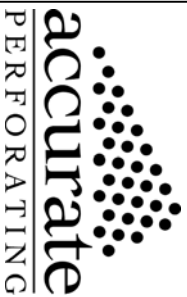


# Checklist.

- ☐ **Quantity.** State the number of perforated pieces or sq. ft. of coverage required.
- ☐ **Thickness.** Specify in gage numbers or in decimal inches, i.e. 1/4" thick, 16GA, .040", etc.
- ☐ **Metal.** State type of metal required, i.e. aluminum, stainless steel, copper, galvanized, etc.
- ☐ **Width & Length.** Unless otherwise specified, the length will be the long dimension of sheet.
- ☐ **Perforation Configuration.** Refer to the patterns page on our web site at [www.accurateperforating.com](http://www.accurateperforating.com) for pattern codes or use the following checklist items to describe your needs.
  - ☐ **Perforation Size.** Specify the size of perforated hole in inches, i.e. .125", .375", .500", etc.
  - ☐ **Perforation Shape.** See the various types shown on the "Basic Patterns" page.
  - ☐ **Arrangement of Perforations.** Specify "staggered" or "straight line" or other patterns.  
Normally the straight row of a staggered pattern will run the long way of the sheet.
  - ☐ **Spacing of Perforations.** This can be specified as the distance between hole centers, the percent of open area or, in the case of small holes, as the number of holes per square inch.
  - ☐ **Solid Margins.** If margins on the perforated sheet are not important, specify "minimum or no margins."
  - ☐ **Finish.** Specify powder coating, anodizing, Kynar®, plating or degreasing.
  - ☐ **Other information.** For slotted perforations – specify whether the long dimension of the slot is parallel to the long or short dimension of the sheet or plate.
  - ☐ **A drawing** of your part or job is always preferred to speed quotations.



\*\* HOLE PATTERN IS ACTUAL SIZE \*\*



3636 S. KEDZIE AVE.  
CHICAGO, IL 60632  
ph) 800.621.0273  
fax) 773.254.9453  
[www.accurateperforating.com](http://www.accurateperforating.com)

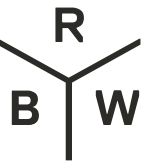
PATTERN TYPE	Round Staggered	
SIZE x CENTERS	.093" x .187"	
OPEN AREA	23 %	

Tooling Notes :  
48S.003UNF , 48S.003FIN ,  
48S.004UNF , 48S.004FIN ,  
60S.004UNF , 60S.004FIN ,  
48S.005UNF , 48S.005FIN ,  
48S.006FIN , 60S.006FIN ,  
60H.006FIN , 48H.010FIN ,  
60H.011UNF

RS027

# Crisp Sconce

Sconces



50 Greene St  
New York NY 10013  
T +1 212 388 1621  
[sales@rbw.com](mailto:sales@rbw.com)



For 2D & 3D drawings of all products, including CAD, Revit and IES files, please visit [rbw.com](http://rbw.com)

Generate Date: Wed Mar 27 2024



## DESCRIPTION

Crisp's simple, iconic design is suitable for both wall and ceiling installation, indoors and outdoors. The solid glass shade, offered in a range of finishes, is distinguished by its scored surface, adding a subtle textural detail to the environment.

## MATERIALS

Cast solid glass, aluminum

## COLLECTION NOTES

Luminaire lumens listed are for AC input TRIAC control. DC input performance please see photometry downloads. Each form of cast glass is unique. We review each to ensure they conform to ASTM standards, which includes the presence of small air bubbles within the glass.

## PERFORMANCE

Delivered Lumens 550 lm (Frosted) | 445 lm (White) | 106 lm (Chrome) | 52 lm (Copper)

Power Consumption 7.5W

Luminous Efficacy 71.7 lm/W (Frosted) | 58.1 lm/W (White) | 13.9 lm/W (Chrome) | 6.9 lm/W (Copper)

90 CRI

Stats above are based on AC Input 2700K, for other configurations please refer to Photometric Download.

## LED LIFESPAN

50k hours

## CERTIFICATION

ADA Compliant

UL Listed

Suitable for Wet Locations

Suitable for Damp Locations

IP20

IP65

Declare (LBC Red List Approved)



NOTE ON IMAGERY

All product photos are made using the correlated color temperature (CCT) of 2700k. The actual color temperature experienced within your environment may vary based on other light sources and materials present.

PRODUCT DIMENSIONS

5 in dia x 3.3 in D

PRODUCT WEIGHT

3.5 lbs / 2 kg

DIMENSIONAL WEIGHT

3 lbs

YOUR PRODUCT CODE

CR-WS-S10-AA01-27-10\_TRIAC\_120V-IP20

Specification Logic

GLASS FINISH

Frosted	S12
White Interior	S10
Chrome Exterior	S11
Copper Exterior	S13

BACKPLATE FINISH

Natural Anodized	AA01
Black Anodized	AA04

COLOR TEMPERATURE

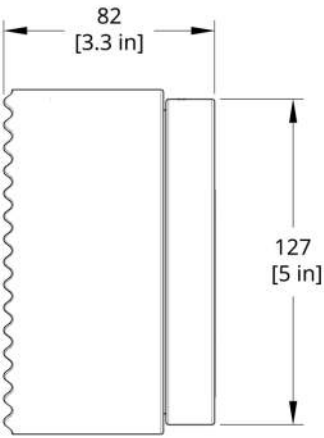
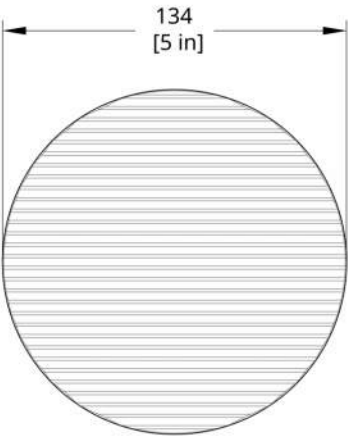
2700K (warm white)	27
3000K (soft white)	30
3500K (neutral white)	35

1% Dimming, 0-10V Control, 120V or 277V "Universal Input" (Driver External)	1_10V_UNV
Low Voltage (Driver required, driver not included)	LV
10% Dimming, TRIAC / Forward Phase Control, 120V Input	10_TRIAC_120V
1% Dimming, TRIAC / Forward Phase Control, 120V Input (Driver External)	1_TRIAC_120V
0.1% Dimming, 0-10V Control, 120V or 277V "Universal Input" (Driver External)	0.1_10V_UNV

IP RATING

IP 20	IP20
IP 65	IP65





CR-WS Crisp Sconce Dimension

# PREST® PAVERS ON- GRADE

**Hanover's Prest® Pavers** are the perfect alternative to natural stone. High compressive strength and density give the product durability and low water absorption comparable to stone. A large selection of dimensionally compatible sizes as well as a range of other custom sizes are available. Hanover® will strive to provide any size paver required by the project's design specifications. With nearly



endless design options, Hanover® Prest® Pavers are the superior choice for any project from corporate entranceways to pedestrian plaza areas.

- Sizes range from nominal 12" x 12" to 24" x48" [[\*\*PAVER SIZE CHART\*\*](#)]
- Compressive Strength: 8500 psi
- Flexural Strength: 1100 psi
- Absorption: less than 5%
- Density: 155 lbs/3ft
- Recommended for pedestrian use only [[\*\*PRODUCT USAGE CHART\*\*](#)]
- Wide range of standard and custom colors [[\*\*VIEW COLORS\*\*](#)]
- Ability to produce in a variety of finishes [[\*\*VIEW TEXTURES\*\*](#)]
- Pavers are manufactured with Recycled Content [[\*\*VIEW CONTENT\*\*](#)]
- Manufactured with a standard 3/16" bevel. A square edge option is available upon request.
- Select Prest Pavers are considered to be a part of Hanover's Sustainable Products [[\*\*VIEW ALL SUSTAINABLE PRODUCTS\*\*](#)]

## TERRAZZO COLLECTION

Make outdoor spaces an

## CHESAPEAKE COLLECTION

Hanover® Pavers have

## GRANITE COLLECTION

Hanover® has developed



# CUSTOM COLORS WITH TUDOR® FINISH



Matrix  
#1458  
(Heavy  
Tudor®  
Only)



Matrix  
#1025



Matrix  
#115



Matrix  
#1171\*



Antietam\*



Matrix  
#1119



Matrix  
#1151\*



Glacier  
White



Matrix  
#1914



Matrix  
#1916\*



Matrix  
#1952



Matrix  
#1457



Matrix  
#1856



Matrix  
#1875\*



Matrix  
#1810



Matrix  
#1649







Matrix  
#1767



Matrix  
#1442



Matrix  
#1111\*



Matrix  
#1256



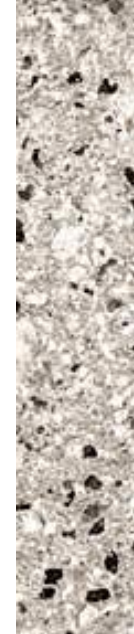
Matrix  
#1636



Matrix  
#1983



Matrix  
#2088



Matrix  
#2922



Matrix  
#1428



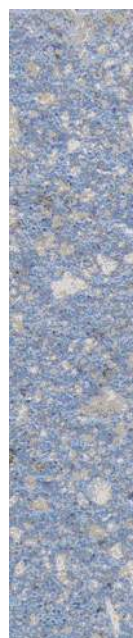
Matrix  
#2115



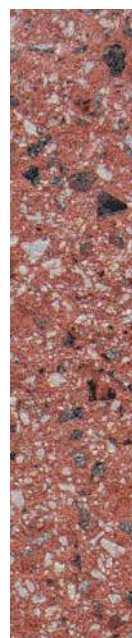
Matrix  
#2156



Matrix  
#1930



Matrix  
#1537



Matrix  
#2659



Matrix  
#2835

Colors shown are custom colors. Please contact a Hanover® Sales Representative for pricing.

\*Natural color Prest® Pavers have a tendency to vary in color within any given shipment. It may vary in shade from gray/buff to light gray, and even to a darker gray. This variance should be expected and considered normal for the Natural color Prest® Pavers.

**PLEASE NOTE:** Additional custom blending is available on special order when quantities permit. The color photos shown in this catalog were prepared with great concern for accuracy. However, it is suggested that actual samples be requested before specifying. Due to the natural variance of the raw materials used, pavers can be expected to differ slightly from sample to actual product. It is recommended that the pavers be cleaned after the installation is finished. Please contact our representatives for product suggestions.





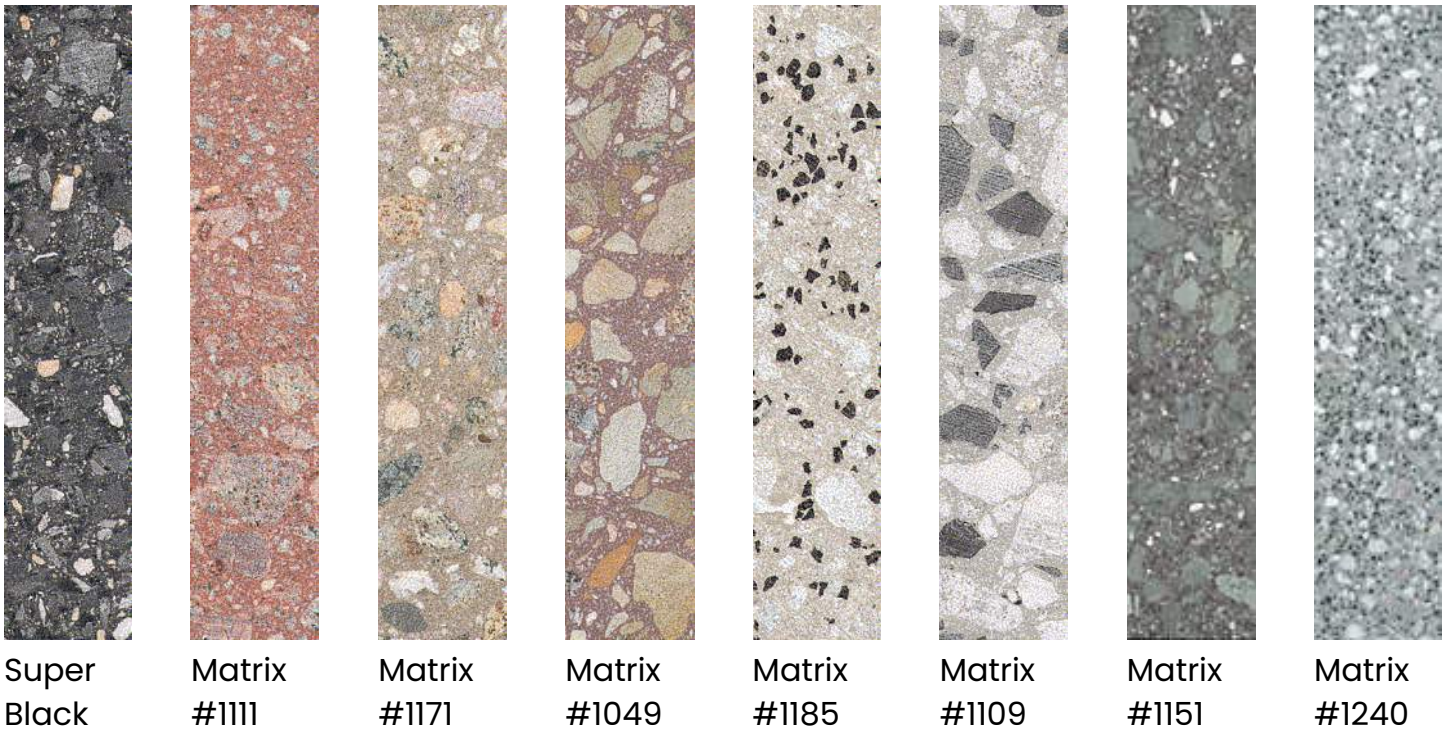
# STANDARD COLORS WITH TUDOR® FINISH



\*Natural color Prest® Pavers have a tendency to vary in color within any given shipment. It may vary in shade from gray/buff to light gray, and even to a darker gray. This variance should be expected and considered normal for the Natural color Prest® Pavers.

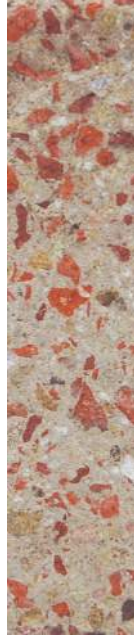
**PLEASE NOTE:** For stability of color, sealing is recommended. Two types of sealers are suggested – Hanover® Intensifying Sealer or Hanover® Natural Sealer

# CUSTOM COLORS WITH GROUND FINISH











several  
shades  
and will  
include  
some  
solid  
and  
some  
blended  
pieces.

# CREATIVELY PRODUCING CONCRETE PAVERS HAS BEEN HANOVER'S SPECIALTY FOR OVER 50 YEARS.

## RELATED PRODUCTS

- Prest® Pavers On-Grade
- Chesapeake Collection
- PlankStone® Pavers
- Detectable Warning®
- Multisided Paver System
- Slateface® Pavers

## RELATED RESOURCES

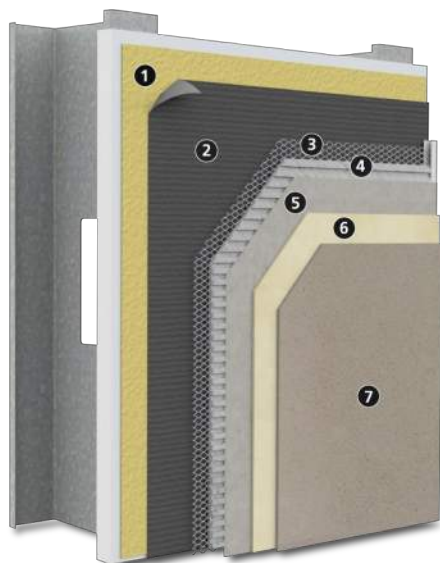
- 0802 - Paver Laying Patterns (A-F)
- Prest® Paver vs Prest® Brick Video
- Maintenance Guidelines
- 5803 - Paver Data Sheet
- 6202 - Prest® Paver Test Report
- 6203 - SRI Values





# StoPowerwall®

Portland cement stucco with StoGuard® air and water-resistive barrier system, drainage, and Sto high performance finishes



Substrate: Glass mat gypsum sheathing in compliance with ASTM C 1177, building code compliant wood-based sheathing (plywood or OSB), concrete, or concrete masonry (CMU)

1)	StoGuard® Air and Water-Resistive Barrier
2)	Code compliant paper or felt Water-Resistive Barrier
3)	Code compliant minimum 2.5 lb/yd <sup>2</sup> (1.4 kg/m <sup>2</sup> ) self-furred galvanized steel diamond mesh metal lath or Structalath SFCR Twin Track 2.5 self-furring welded wire lath
4)	ASTM C926 compliant stucco scratch coat (as manufactured or listed by Sto Corp.)
5)	ASTM C926 compliant stucco brown coat (as manufactured or listed by Sto Corp.)
6)	Sto Primer (optional)
7)	Choose among: <ul style="list-style-type: none"> <li>Sto Textured Finishes</li> <li>StoCast Finish: Wood or Brick</li> <li>Sto Signature Series or Sto Specialty Finishes</li> </ul>

System Accessory: StoSeal STPE Sealant for use as an exterior weather seal around wall penetrations, at dynamic joints in wall construction, and as an interior air seal for air barrier continuity

## System Description

StoPowerwall is a drainable stucco wall assembly that features a code compliant StoGuard air and water-resistive barrier system. It combines the strength and durability of traditional stucco with StoGuard air and water protection and Sto high performance finishes.

## Uses

StoPowerwall can be used in residential or commercial wall construction for superior aesthetics, durability, and air and moisture control.

Features	Benefits
Integrally colored factory blended Sto textured, StoCast finishes, or Sto Specialty finishes	Consistent color and aesthetics increase curb appeal
StoGuard air and water-resistive barrier system	Fully compatible, code compliant air and water-resistive barrier system
Impact and puncture resistance	Withstands abuse, reduced maintenance
Optional Sto Crack Defense	Resists stucco cracking

## Properties

Weight (excluding sheathing / studs)	< 12 psf (56.6 kg/m <sup>2</sup> )
Assembly Thickness (from outer face of sheathing)	Nominal 7/8 inch (22mm)
R-value (from outer face of sheathing)	0.84 ft <sup>2</sup> •h•°F / Btu (0.148 m <sup>2</sup> •K / W)
Wind Load Resistance	Capable of achieving: +65, -48 psf (+3.11, -2.29 kPa)
StoGuard air and water-resistive barrier system code compliance with StoGuard Detail Components	<ul style="list-style-type: none"> <li>IBC and IRC (2015, 2018)</li> <li>ASHRAE 90.1-2019</li> </ul>
Construction Types, Fire Resistance	<ul style="list-style-type: none"> <li>For use on all Types of Construction</li> <li>ASTM E119 hourly rated assemblies</li> </ul>

## Warranty

10 year Limited Warranty when used with Sto Crack Defense

## Maintenance

Requires periodic cleaning to maintain appearance, repair of cracks and impact damage if they occur, recoating to enhance appearance of weathered finish. Sealants and other façade components must be maintained to prevent water infiltration.



# StoPowerwall®

Portland cement stucco with StoGuard air and water-resistive barrier system, drainage, and Sto high performance finishes

## Limitations

Fire resistance rated assemblies generally require 7/8 inch (22mm) Portland cement stucco over non-load bearing steel frame. See ICC ESR 2323, IAPMO ER 382, and other Sto listed ASTM C926 compliant stucco evaluation reports, for additional fire-resistance-rated assemblies.

Local codes or specifications may require a drainage space or cavity behind stucco. Refer to information on StoPowerwall Drainscreen for these situations.

Wind load resistance: +65, -48 psf (+3.11 to -2.29 kPa). Ultimate wind load resistance also depends on sheathing, sheathing attachment, stiffness of supporting construction, and strength characteristics of stucco mix. Test assembly if necessary to verify wind load resistance is in conformance with local code requirements. Design for maximum allowable deflection of L/360.

Cracking can occur in portland cement stucco. Cracking is generally not caused by a material defect in the stucco and can be minimized by following sound design and construction practices such as: proper installation of lath, proper incorporation of stress relief joints in the construction, proper sand gradation for field mixed stucco, proper proportioning of stucco mix ingredients, use of the minimum amount of water in the stucco mix for placement of stucco, avoiding the use of excess water, moist curing of the stucco after it has been applied, and proper sequencing of construction to avoid stresses in the freshly placed stucco.

Efflorescence is a normal occurrence in portland cement-based products and can affect final appearance of finish products installed over stucco.

For use on vertical above grade walls only. Do not use below grade or on roofs or roof-like surfaces.

Dark or highly saturated finish colors may require added maintenance compared to light or pastel colors.

Air and Water-Resistive Barrier and base coat materials are not intended for prolonged weather exposure. Refer to component product bulletins for specific limitations involving exposure, use, handling and storage of component materials.

## Sustainable Design

### Air Quality and VOC Compliance

All finish coatings, adhesives, air and water-resistive barrier joint treatments and coatings meet US EPA (40 CFR 59) and SCAQMD (Rule 1113)

### LEED Credit Eligibility

System has high potential for LEED and other sustainability program credits based on use of continuous air and water-resistive barrier and VOC compliance

### Regulatory Compliance and Standards Testing

Refer to ICC-ESR 2323, IAPMO ER 382, other Sto listed stucco evaluation reports	Stucco base material is in compliance with ASTM C926 when installed at a minimum thickness of ¾ inch (19 mm) in 2 coats to code compliant wall assemblies.
ICC ESR No. 1233 covering StoGuard Air & Water-Resistive Barrier	Complies with 2015 and 2018 IBC, IRC
ASHRAE 90.1-2019 <sup>1</sup>	Complies with Section 5, Building Envelope, air barrier requirements
ASTM 2357 <sup>2</sup>	StoGuard Air and Water-Resistive Barrier assembly meets air leakage resistance criteria of $\leq 0.04$ cfm/ft <sup>2</sup> at 1.57 psf (0.2 L/s•m <sup>2</sup> at 75 Pa)
NFPA 285 <sup>3</sup>	StoGuard Air and Water-Resistive Barrier with stucco meets criteria for use on noncombustible construction
ASTM E 119 <sup>4</sup>	Meets requirements for 1 hour rating over non-load-bearing fire-resistance-rated construction

1. Energy Standard for Buildings Except Low-Rise Residential Buildings
2. Standard Test Method for Determining Air Leakage of Air Barrier Assemblies
3. Standard Fire Test Method for Evaluation of Fire Propagation Characteristics of Exterior Non-Load-Bearing Wall Assemblies Containing Combustible Components
4. Standard Test Methods for Fire Test of Building Construction and Material

For complete information refer to [www.stocorp.com](http://www.stocorp.com)

<b>Sto Corp.</b> 3800 Camp Creek Parkway Building 1400, Suite 120 Atlanta, GA 30331  Tel: 404-346-3666 Toll Free: 1-800-221-2397 Fax: 404 346-3119  <a href="http://www.stocorp.com">www.stocorp.com</a>	<b>SB - 6600</b> Revision: 006 Date: 10/2023	<p style="text-align: center;"><b>Attention</b></p> <p>Sto products are intended for use by qualified professional contractors, not consumers, as a component of a larger construction assembly as specified by a qualified design professional, general contractor or builder. They should be installed in accordance with those specifications and Sto's instructions. Sto Corp. disclaims all, and assumes no, liability for on-site inspections, for its products applied improperly, or by unqualified persons or entities, or as part of an improperly designed or constructed building, for the nonperformance of adjacent building components or assemblies, or for other construction activities beyond Sto's control. Improper use of Sto products or use as part of an improperly designed or constructed larger assembly or building may result in serious damage to this product, and to the structure of the building or its components. <b>STO CORP. DISCLAIMS ALL WARRANTIES EXPRESS OR IMPLIED EXCEPT FOR EXPLICIT LIMITED WRITTEN WARRANTIES ISSUED TO AND ACCEPTED BY BUILDING OWNERS IN ACCORDANCE WITH STO'S WARRANTY PROGRAMS WHICH ARE SUBJECT TO CHANGE FROM TIME TO TIME.</b> For the fullest, most current information on proper application, clean-up, mixing and other specifications and warranties, cautions and disclaimers, please refer to the Sto Corp. website, <a href="http://www.stocorp.com">www.stocorp.com</a>.</p>
---	--	--

**TRESPA® METEON® LUMEN**

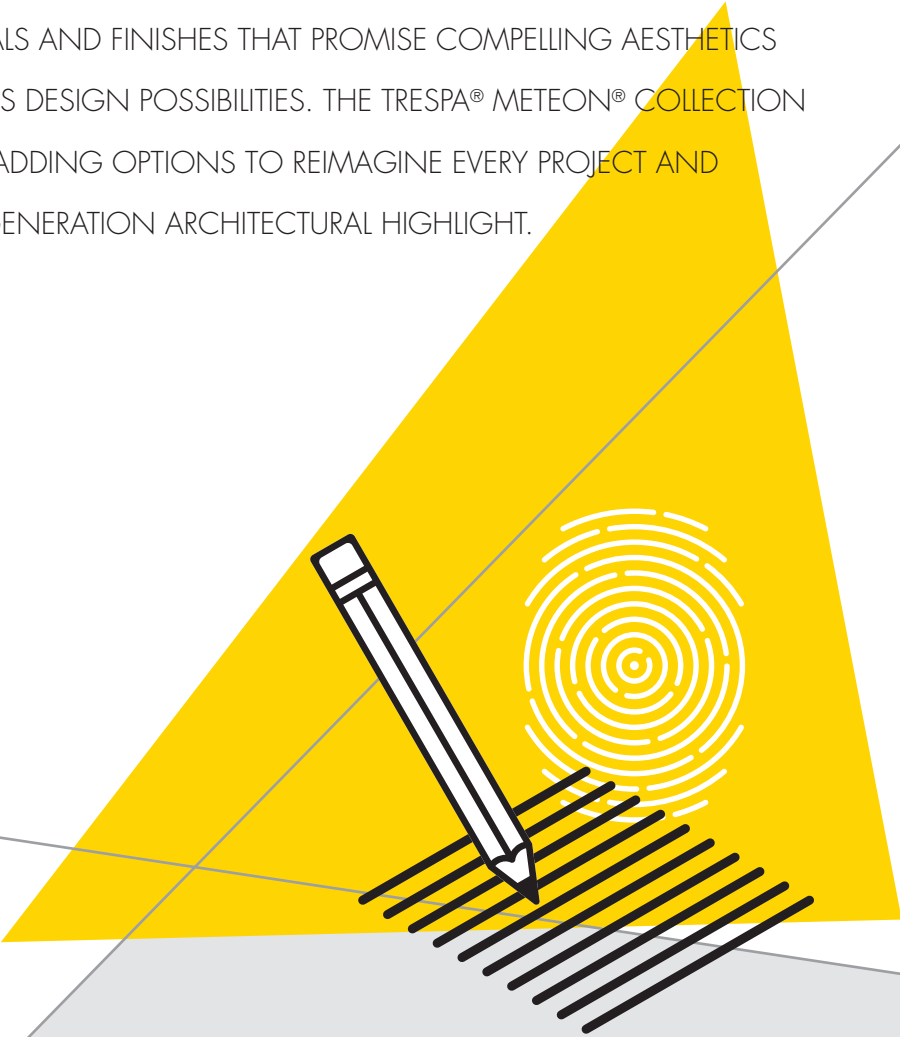
CREATE  
MEMORABLE  
FAÇADES

Think Trespa

TRESPA®

# WHERE COMPELLING AESTHETICS AND LIMITLESS DESIGN POSSIBILITIES MEET

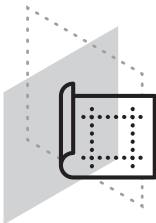
DISCOVER AN ENORMOUS RANGE OF DESIGNS. UNIQUE PATTERNS. RHYTHMS AND DEPTHS. AND ENDLESS, LONG-LASTING COLORS. ALL BROUGHT TOGETHER IN HIGH-END MATERIALS AND FINISHES THAT PROMISE COMPELLING AESTHETICS AND ALMOST LIMITLESS DESIGN POSSIBILITIES. THE TRESPA® METEON® COLLECTION OFFERS HIGH-END CLADDING OPTIONS TO REIMAGINE EVERY PROJECT AND DESIGN YOUR NEXT-GENERATION ARCHITECTURAL HIGHLIGHT.



Create perfect one-of-a-kind effects. Or simply look for other value-adding options to determine a distinctive look and underline the qualities of a building. All according to your vision and ideas. It's now possible, with Trespa® Meteon®.

## EVERYTHING YOU WANT

This stunning collection features cladding panels for innovative and functional ventilated façade systems, balconies, and sunblind solutions. Available in a broad range of looks, such as Metallics, Lumen, Focus, Naturals and Woods. You even can pick different colors and finishes. Allowing you to realize almost everything you want, exactly in the way you want.



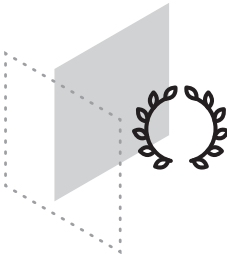
## LONG-LASTING ENJOYMENT

The entire collection is highly weather resistant, so sun and rain will have no significant effect on a panel's surface. They're also easy to clean and highly scratch and impact resistant. And they all come with a 10-year limited warranty.



## HIGH-END QUALITY

Trespa® Meteon® is a decorative high-pressure compact laminate (HPL) with an integral surface manufactured using Trespa's unique in-house technology: Electron Beam Curing (EBC). The blend of up to 70% natural fibers and thermosetting resins, manufactured under high pressures and temperatures, yields a highly stable, dense panel with good strength-to-weight ratio.





METEON® LUMEN

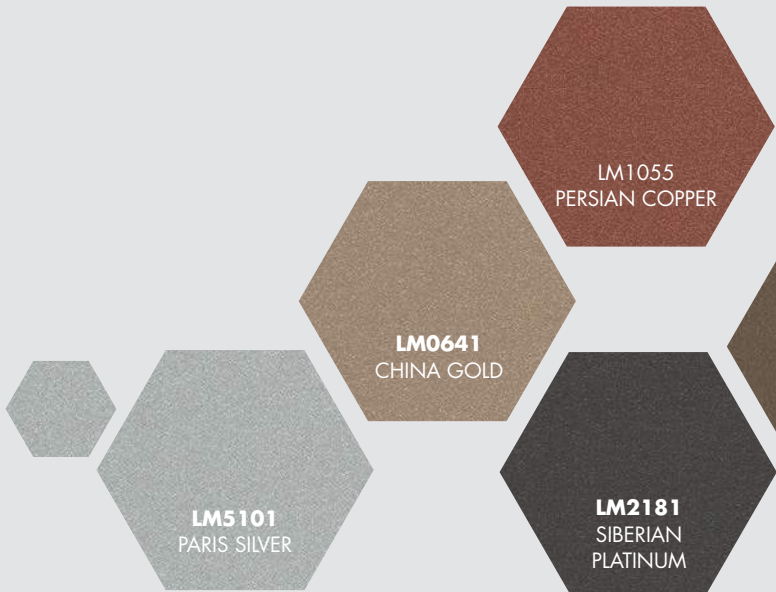
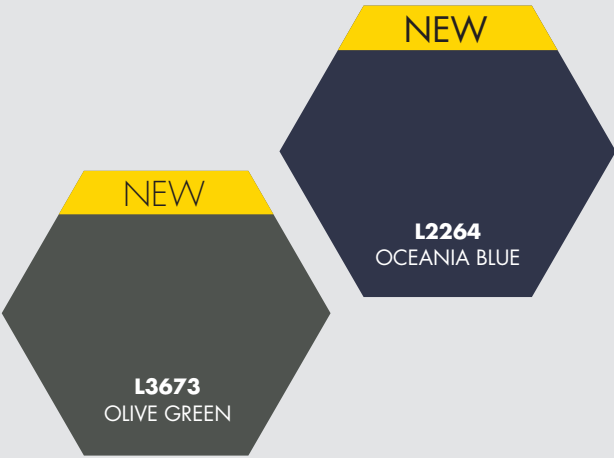
# CREATE MEMORABLE FAÇADES THAT PLAY WITH LIGHT, FROM EXTREME MATTE TO SPARKLING GLOSS

Light inspires. Light refreshes. And light can bring new dimensions to design freedom. The Trespa® Meteon® Lumen collection is a unique cladding panel with rich nuances and natural tones that bring a subtle and refined touch to every project. It offers more light-absorbing, matte effect qualities, as well as more natural or high-reflective aspects. The possibilities are endless, but they all have one thing in common: a calming, crisp result with a confident sense of style that brings every project to life.

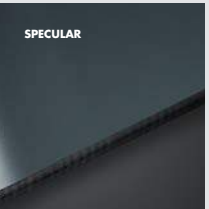
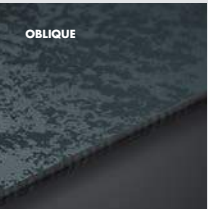
The Trespa® Meteon® Lumen collection includes up to three unique finishes and is designed to add a feeling of movement, depth, tone, and liveliness to your projects. And because the collection is available in a rich palette of colors, you can design memorable façades with impressive qualities that make them stand out.



DISCOVER THE TRESPA® METEON® LUMEN  
COLLECTION AND REIMAGINE YOUR NEXT PROJECT



## FINISHES



DIFFUSE

PREMIUM FAÇADE WITH  
A DEEP MATTE SURFACE

The Trespa® Meteon® Lumen Diffuse finish helps you create new, state-of-the-art designs while using natural light as a design element. This ‘less is more’ product absorbs light and removes shine and texture, creating a velvety smooth, subdued matte appearance. Meteon® Lumen Diffuse will bring instant tranquility, giving a façade a unique and desirable look. The light-absorbing quality of these panels creates an interplay of shades and a unique tonal depth. A feature that enhances colors without detracting from the overall design.

OBLIQUE

A NATURAL TOUCH  
FOR EVERY SURFACE

The Trespa® Meteon® Lumen Oblique finish is a unique product with impressive design results. Its natural, weathered look can enhance any façade with a pleasantly irregular matte and gloss surface. The result: a new dimension of liveliness to augment your projects.

The Trespa® Meteon® Lumen Oblique finish finds its inspiration in nature, which brings natural elements to your design. It creates an impressive atmosphere, especially when combined with other finishes. And thanks to its ability to reflect light in an irregular way, it also brings a crisp and natural touch to every surface. Subtle, but with impact that packs a real design punch.

SPECULAR

ADDING LIVELINESS  
THROUGH GLOSS

The Trespa® Meteon® Lumen Specular finish reflects its surroundings, adding liveliness with deep colors and gloss. Buildings become seamlessly integrated into the environment, resulting in a vibrant designed façade. Combined with natural tones, it gives you even more freedom to design contemporary façades with a subtle elegance that will never go out of style.

The Trespa® Meteon® Lumen Specular finish integrates perfectly with our other finishes. So you can blend aspects of modern design with colors, variations, and fascinating reflections of natural light.





# THE BEAUTY OF BEING BOLD

THE NEXT MATERIAL HOUSE (NEMHO)

“Nemho, our new shared R&D center in Weert, next to Trespa’s main office, fulfills a dual purpose. For all companies belonging to the broadview group, it is a technology and competence hub.”

*André Horbach, CEO of Trespa*

“I had never built with Trespa® products before, but I was convinced from the start that we had to come up with something special – a spectacular idea that would reveal some of the untapped aesthetic potential of Trespa® Meteon® façade panels. We always strive for concepts that will inspire people and make them happy to live or work in the buildings we create.”

*Erik van Eck, architect Broekbaema*



LEARN MORE ABOUT THE  
ARCHITECTURAL DESIGN,  
WATCH THE VIDEO



TRESPA® METEON® LUMEN  
THE BEAUTY OF BEING BOLD

Trespa® Meteon® Lumen panels come in a rather unusual variety of shades and finishes, from shiny to satin to matte. This allowed us, by combining three finishes – Diffuse, Specular and Oblique – to create a design that literally comes to life in the sun, when each finish reflects the light in its own, more or less muted, ever changing way”.

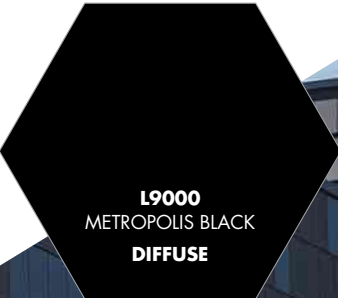
- Erik van Eck, architect Broekbaema

NEMHO

ARCHITECT	BROEKBAKEMA
INSTALLER	LIMEPARTS-DROOGHMANS
MARKET SEGMENT	OFFICES, R&D
BUILD TYPE	NEW CONSTRUCTION
USE	FAÇADE
CONSTRUCTION YR.	2020



DISCOVER THE PROJECT



L9000  
METROPOLIS BLACK  
DIFFUSE



L9000  
METROPOLIS BLACK



TRESPA® METEON® LUMEN










ECOLE DES SALINES

# CLEAN WHITE EXTERIOR





TRESPA® METEON® LUMEN  
OUR DELIVERY PROGRAM

Color code	Color name	Diffuse			Oblique			Specular		
										
L0500	Athens White	■	■	■	■	■	■	■	■	■
L0651	Italian Greige	■	■	■						
L1971	Iceland Grey	■	■	■						
L2151	London Grey	■	■	■	■	■	■	■	■	■
L2264	Oceania Blue	■	■	■						
L2581	New York Grey	■	■	■	■	■	■	■	■	■
L3673	Olive Green	■	■	■						
L9000	Metropolis Black	■	■	■	■	■	■	■	■	■
With metallic effect										
LM0561	Roman Bronze	■	■	■	■	■	■			
LM0641	China Gold	■	■	■	■	■	■			
LM1055	Persian Copper	■	■	■	■	■	■			
LM2181	Siberian Platinum	■	■	■	■	■	■			
LM5101	Paris Silver	■	■	■	■	■	■			

TRESPA® METEON® LUMEN DIFFUSE, LUMEN OBLIQUE AND ALL LUMEN WITH METALLIC EFFECT (PRODUCTS WITH LM CODE) FEATURE A DIRECTIONAL COLORED SURFACE.  
\*WITH SATIN REVERSE.


FINISHES



L0500  
ATHENS WHITE  
DIFFUSE

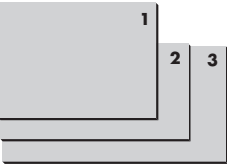
L0500  
ATHENS WHITE

TYPES

-  **SINGLE SIDED DECORATIVE** DECORATIVE SIDE WITH NON DECORATIVE BLACK REVERSE
-  **DOUBLE SIDED DECORATIVE** SAME COLOR FOR FRONT AND REVERSE SIDE OF THE PANEL
-  **VARITOP** DECORATIVE SIDE WITH STANDARD WHITE DECORATIVE SATIN REVERSE (A03.0.0)

SIZE




SIZE



- 1** ≈ 6 x 8 ft (1860 x 2550 mm)
- 2** ≈ 5 x 10 ft (1530 x 3050 mm)
- 3** ≈ 6 x 12 ft (1860 x 3650 mm)

NOTE: FULL SIZE PANELS FEATURE A SQUARENESS TOLERANCE.

THICKNESSES

-  ≈ 5/16 inch (8 mm)
-  ≈ 3/8 inch (10 mm)
-  ≈ 1/2 inch (13 mm)

NOTE

PLEASE BE AWARE THAT NOT ALL PRODUCT-FINISH COMBINATIONS ARE POSSIBLE. FOR AVAILABLE SHEET SIZES, THICKNESSES AND FINISHES IN YOUR COUNTRY, PLEASE CHECK **TRESPA.INFO** FOR THE DETAILED AND UP TO DATE DELIVERY PROGRAM AND MATERIAL PROPERTY DATASHEET. ALTERNATIVELY YOU CAN USE THE PRODUCT SELECTOR ON **TRESPA.COM** (AFTER CHOOSING THE COUNTRY WHERE THE PROJECT IS LOCATED).

ORDER YOUR FREE SAMPLE



FOR TECHNICAL INFORMATION, PLEASE VISIT [WWW.TRESPA.INFO](http://WWW.TRESPA.INFO)



## CONTACT US

### TRESPA INTERNATIONAL B.V.

P.O. Box 110, 6000 AC Weert  
Wetering 20, 6002 SM Weert  
The Netherlands  
www.trespa.com

### TRESPA NORTH AMERICA LTD.

350 Fifth Avenue, Ste 4610  
New York NY 10118  
United States  
1-800-487-3772  
Info.NorthAmerica@Trespa.com

## VISIT US

### TRESPA DESIGN CENTER WEERT

Wetering 20  
6002 SM Weert  
The Netherlands  
Tel: +31 (0) 495 458 845  
TDC.Weert@Trespa.com  
www.trespa.com/tdc

### TRESPA DESIGN CENTER BARCELONA

Calle Ribera 5,  
08003 Barcelona  
Spain  
Tel: +34 (0) 93 295 4193  
TDC.Barcelona@Trespa.com  
www.trespa.com/tdc

### TRESPA DESIGN CENTER SANTIAGO

Eliodoro Yáñez 2831  
Torre A - Local 1  
Providencia, Santiago  
Chile  
Tel: +56 2 24069990  
TDC.Santiago@Trespa.com  
www.trespa.com/tdc

## FOLLOW US



## DISCLAIMER

### GENERAL

These terms apply to the use of this document and such use automatically means that the other party agrees to these terms. The information provided by Trespa International B.V. ("Trespa") in this document is solely indicative. Trespa is unable to warrant the accuracy and completeness of this information. Trespa may change the information included in this document at any time and without further notice. Trespa's customers and third parties must ascertain that they have the most recent document (for the most recent version, please consult: www.trespa.com). No rights can be derived from the information provided; the use of the information is at the other party's risk and responsibility. Trespa does not warrant that the information in this document is suitable for the purpose for which it is consulted by the other party. This document does not contain any design, structural calculation, estimate or other warranty or representation that customers and third parties may rely on. This document does not guarantee any properties of Trespa products. Colors used in Trespa's communications (including but not limited to printed matter) and in samples of Trespa's products may differ from the colors of the Trespa products to be supplied. Samples are not intended for use in product tests and are not representative of characteristics of the Trespa

products. Trespa's products and samples are produced within the specified color tolerances and the colors (of production batches) may differ, even if the same color is used. The viewing angle also influences the color perception. Metallics panels feature a surface whose color appears to change based on the direction from which it is viewed. The specified color stability and color specifications relate only to the decorative surface of the Trespa products, not to the core material and samples of the Trespa products. Trespa products are delivered ex-works with straight, sawn sides. Customers and third parties must have a professional adviser inform them about (the suitability of) the Trespa products for all desired applications and about applicable laws and regulations. Trespa does not warrant the above. The most recent version of the current delivery programme and the Material Properties Datasheet can be found at www.trespa.info. Only the information in the most recent and valid Material Property Datasheet should be used to select and provide advice regarding Trespa products. Trespa reserves the right to change (the specifications for) its products without prior notice.

### LIABILITY

Trespa is not liable (neither contractual nor non-contractual) for any damage arising from or

related to the use of this document, except if and to the extent that such damage is the result of wilful misconduct or gross negligence on the part of Trespa and/or its management. The limitation of liability applies to all parties affiliated with Trespa, including but not limited to its officers, directors, employees, affiliated enterprises, suppliers, distributors, agents, and representatives.

### GENERAL CONDITIONS

All oral and written statements, offers, quotations, sales, supplies, deliveries and/or agreements and all related activities of Trespa are governed by the Trespa General Terms and Conditions of Sale (*Algemene verkoopvoorwaarden Trespa International B.V.*) filed with the Chamber of Commerce and Industry for Noord- en Midden-Limburg in Venlo (NL) on February 20th, 2015 under number 24270677, which can be found on and downloaded from the Trespa website, www.trespa.com/documentation. All oral and written statements, offers, quotations, sales, supplies, deliveries and/or agreements and all related work of Trespa North America, Ltd. are governed by the Trespa North America General Terms and Conditions of Sale, which can be found on and downloaded from the Trespa website, www.trespa.com/documentation. A copy of these general conditions of sale will be provided free of

charge on request. All general terms and conditions other than the conditions mentioned above are dismissed and do not apply, regardless of whether such terms and conditions are referred to on requests for offers, offer confirmations, stationery and/or other documents of the other party, even if Trespa does not expressly object to such terms and conditions.

### INTELLECTUAL PROPERTY

All intellectual property rights and other rights regarding the content of this document (including logos, text and photographs) are owned by Trespa and/or its licensors. Any use of the content of this document, including distribution, reproduction, disclosure, storage in an automated data file or the dispatch of such a file without Trespa's prior written consent is explicitly prohibited. \* Trespa, Meteon, Athlon, TopLab, TopLab<sup>PLUS</sup>, TopLab<sup>PLUSALIGN</sup>, TopLab<sup>ECO-FIBRE</sup>, TopLab<sup>VERTICAL</sup>, TopLab<sup>BASE</sup>, Virtuo, Izeon, Pura, Pura NFC, Volkern, Trespa Essentials and Mystic Metallics are registered trademarks of Trespa.

### QUESTIONS

Should you have any questions or comments, please do not hesitate to contact Trespa.



EN-US2426-432587 ■ VERSION 2.0  
BROCHURE CODE ENUS2426 ■ DATE 10-22

VISIT [TRESPA.COM](http://TRESPA.COM) FOR THE MOST  
UP TO DATE VERSION OF THIS DOCUMENT.

TRESPA®