

CONTEXT: SANBORN MAPS - 118 East Taylor Street

The historic building was constructed in 1853 and is a contributing structure within the Savannah National Historic Landmark District and the Savannah Local Historic District. The two-story addition on the rear, onto which this deck and handrail will be added, was constructed sometime after the 1973 Sanborn Map; however, staff could not locate an approval for the addition. The wood siding infill area, on the three-story addition to the main building, was a 3-story open wood porch until sometime between 1954 and 1973.

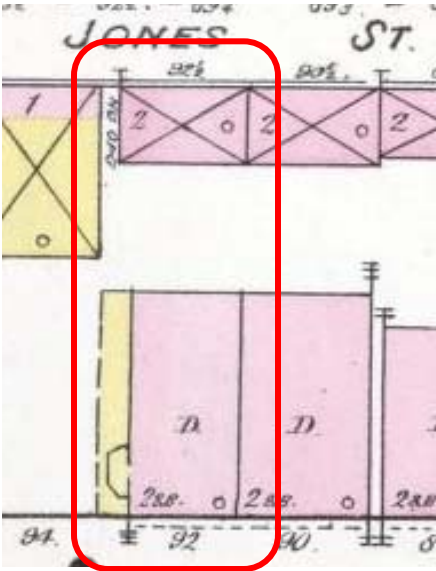


Figure 1.
1888 Sanborn Fire Insurance Map.
Project site location is outlined in red.

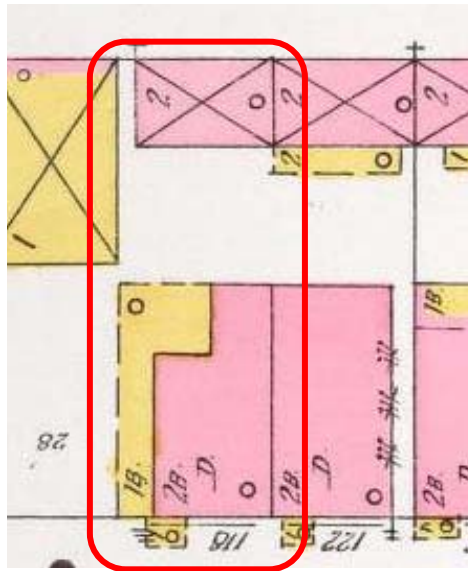


Figure 2.
1898 Sanborn Fire Insurance Map.
Project site location is outlined in red.

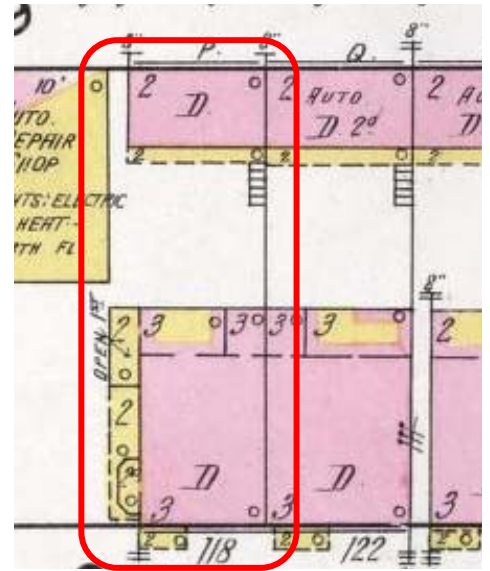


Figure 3.
1916 Sanborn Fire Insurance Map.
Project site location is outlined in red.

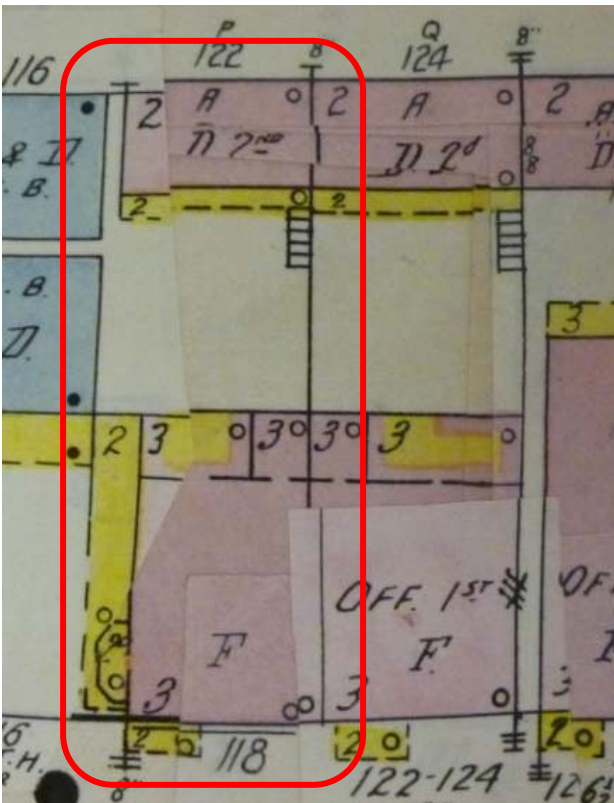


Figure 4.
1954 Sanborn Fire Insurance Map.
Project site location is outlined in red.

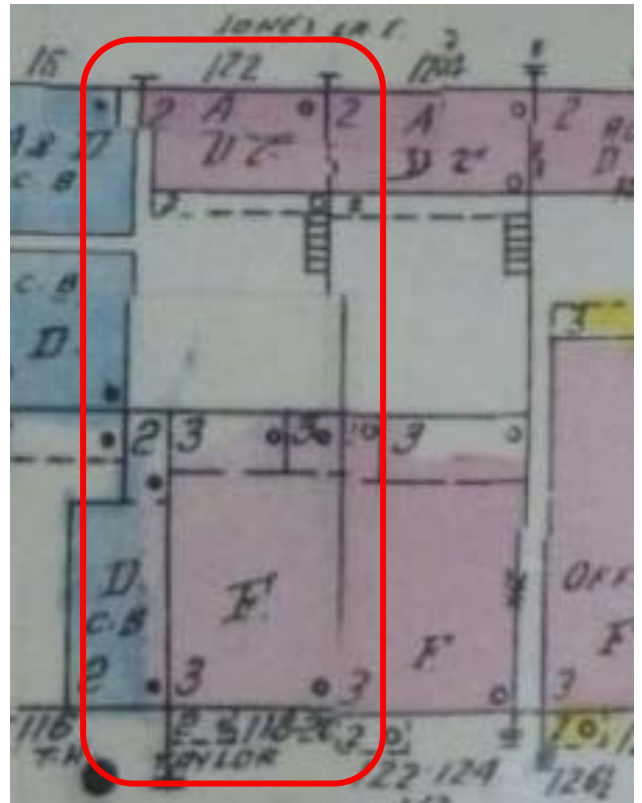


Figure 5.
1973 Sanborn Fire Insurance Map.
Project site location is outlined in red.