

### Project Narrative:

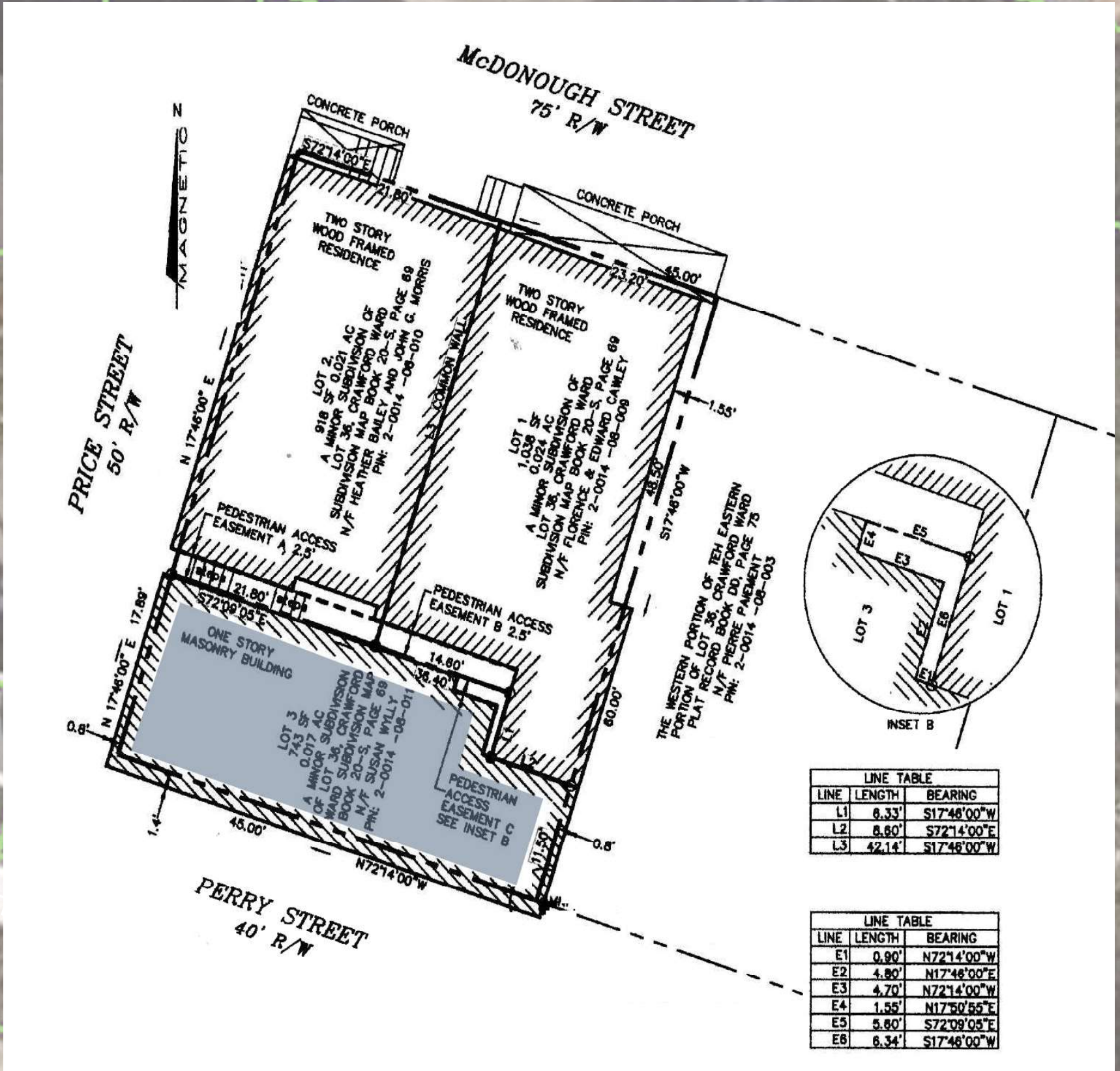
The project located at 232 Price Street is an addition and alteration to an existing 742 sf non-contributing building in the Savannah Downtown Historic District. The existing front facade has elements of Art Deco as a motif and the enhancements to the building use this as a guide for the new design. The exterior is planned to employ true stucco and wood/ fiber cement lap siding and is accented by metal awnings and guardrails that follow with the design aesthetic. All of these elements together form a renewed building that is visually compatible with the surrounding area.

The plan for this project is designed to maximize the living experience for its owners and will update the existing one storey building to a 2 bedroom / 1 1/2 bathroom single family residence. The plan offers an open layout on the upper level with a new living and kitchen area with great natural light through an array of windows throughout. Two new bedrooms, a bathroom, and utility space complete the layout for the main level. The new stairs lead up to the new 2nd storey addition for the new living and kitchen area and will increase the square footage to 1,040 SF. The 2nd storey will also accommodate an outdoor living space that can be accessed from the adjacent living area.

The main goal is to provide serenity and privacy with this new residence while maintaining a strong connection to the Savannah Downtown Historic District at large.

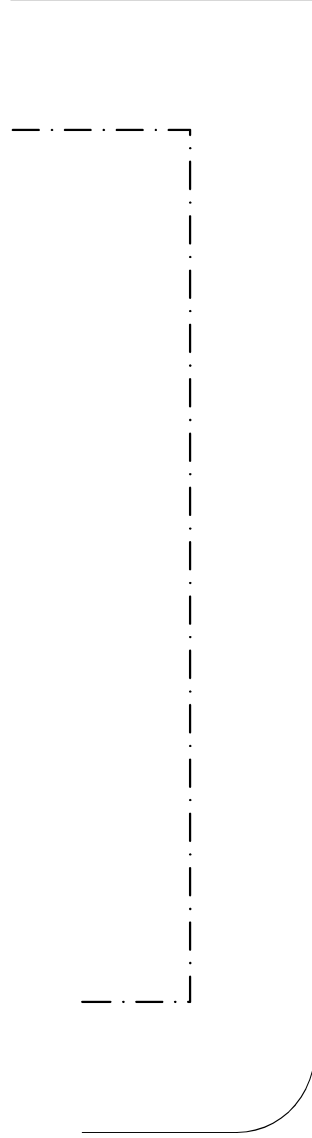


SITE VIEW

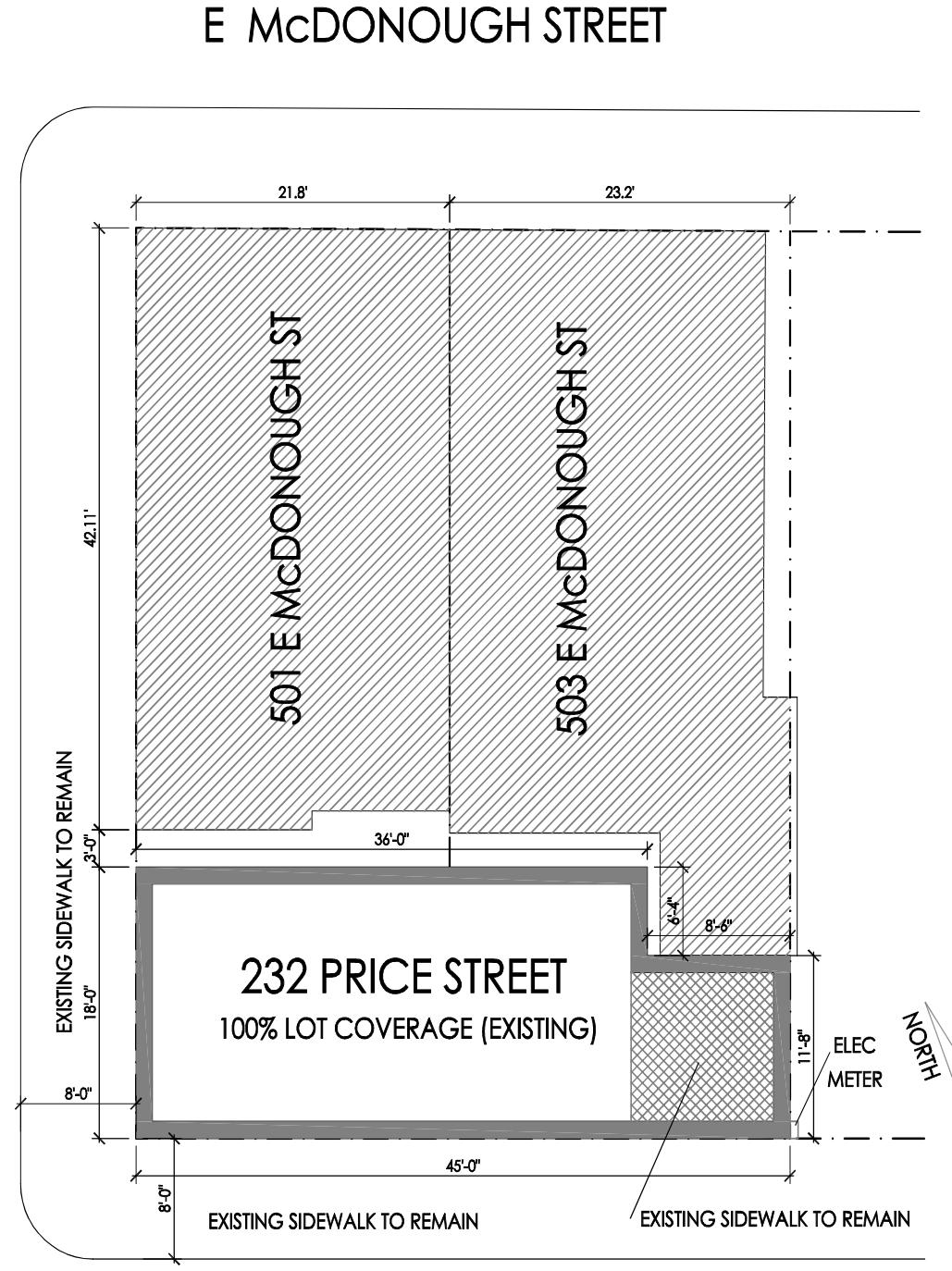




SITE PLAN



PRICE STREET



PERRY STREET

REFUSE CONTAINERS TO BE STORED INSIDE

NO EQUIPEMENT TO BE LOCATED ON THE GROUND; SEE ROOF PLAN FOR EQUIPEMENT & SCREENING

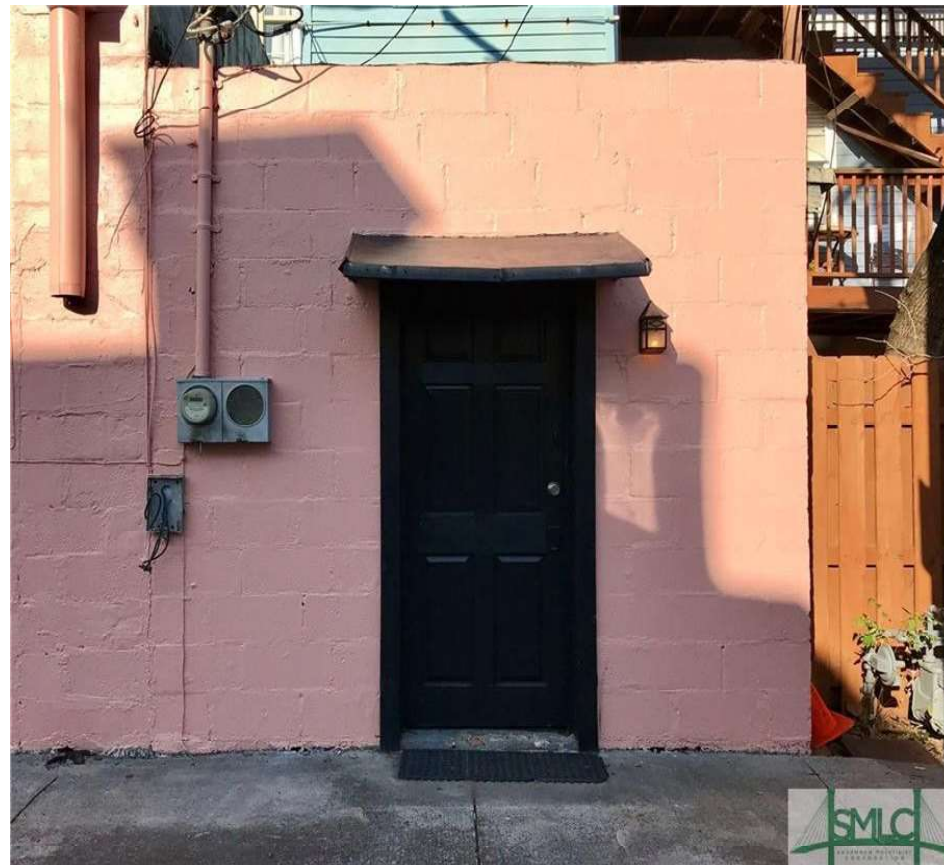




VIEW FROM SW CORNER OF PRICE ST AND PERRY ST



VIEW OF FRONT FACADE



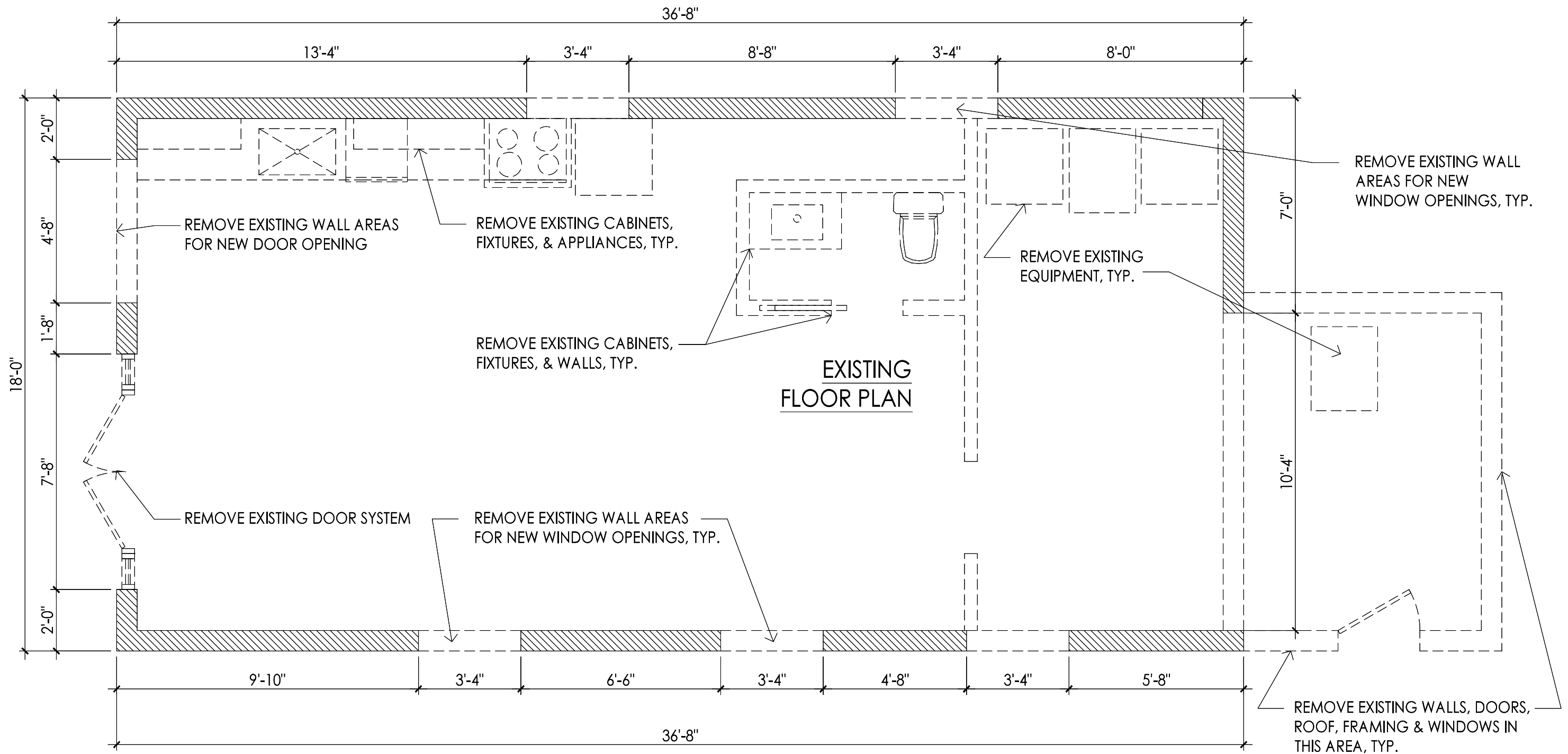
VIEW FROM PERRY ST AT EAST END OF BUILDING TO BE DEMOLISHED



VIEW FROM PERRY ST LOOKING NW

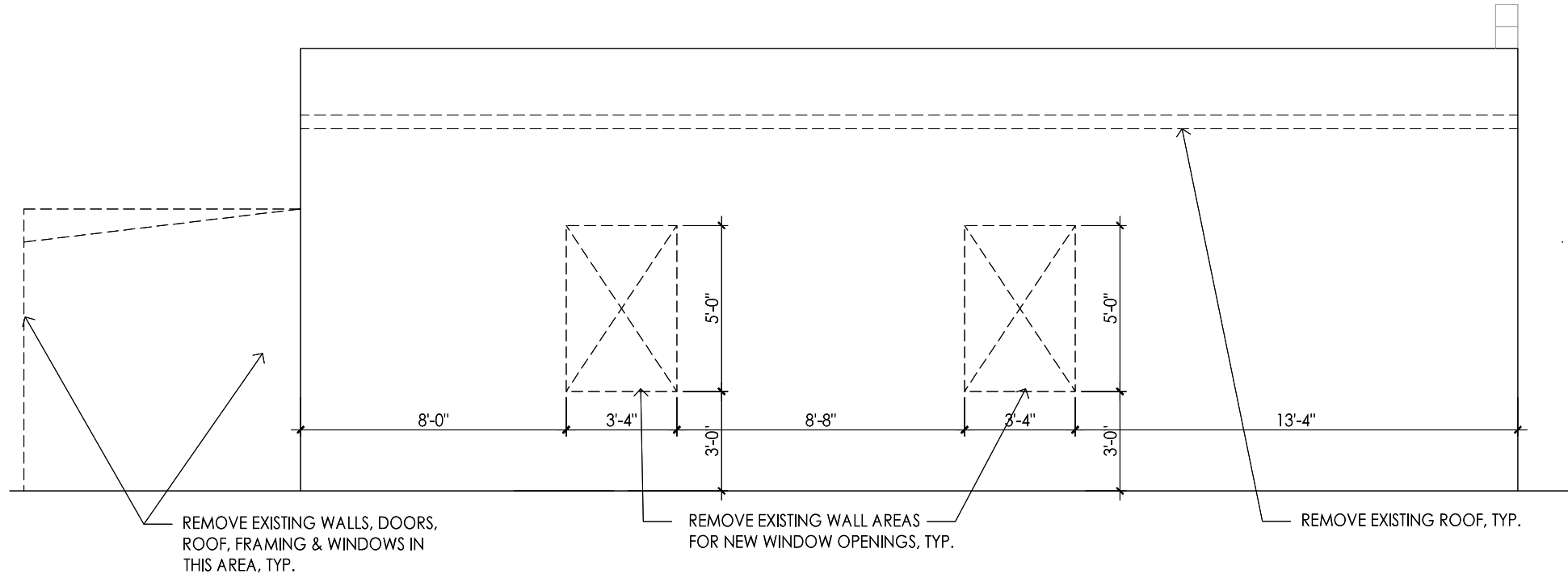
EXISTING BUILDING IMAGES



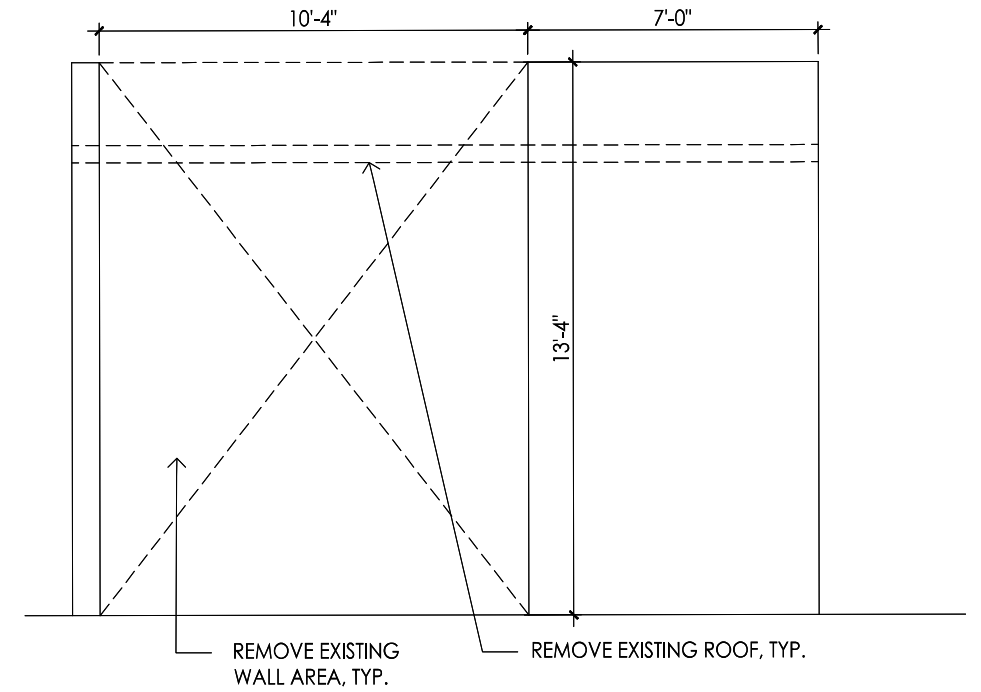


AREAS OF DEMOLITION

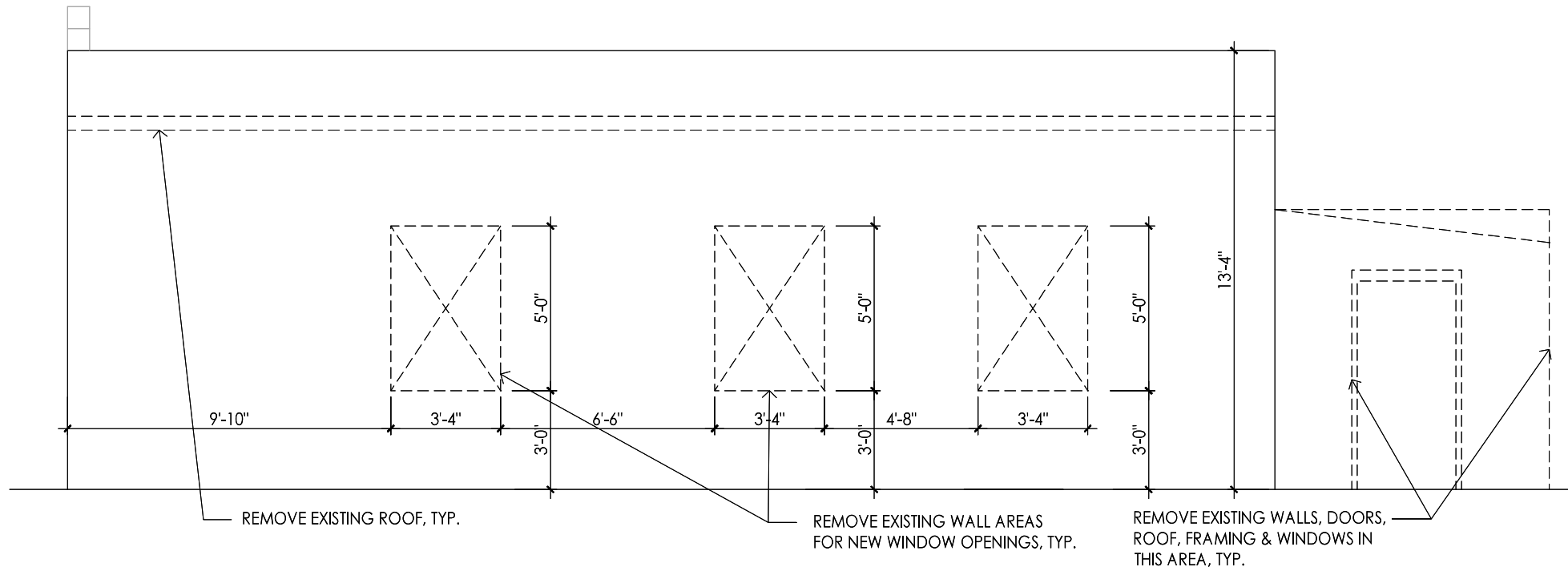
MAIN LEVEL FLOOR PLAN DEMOLITION



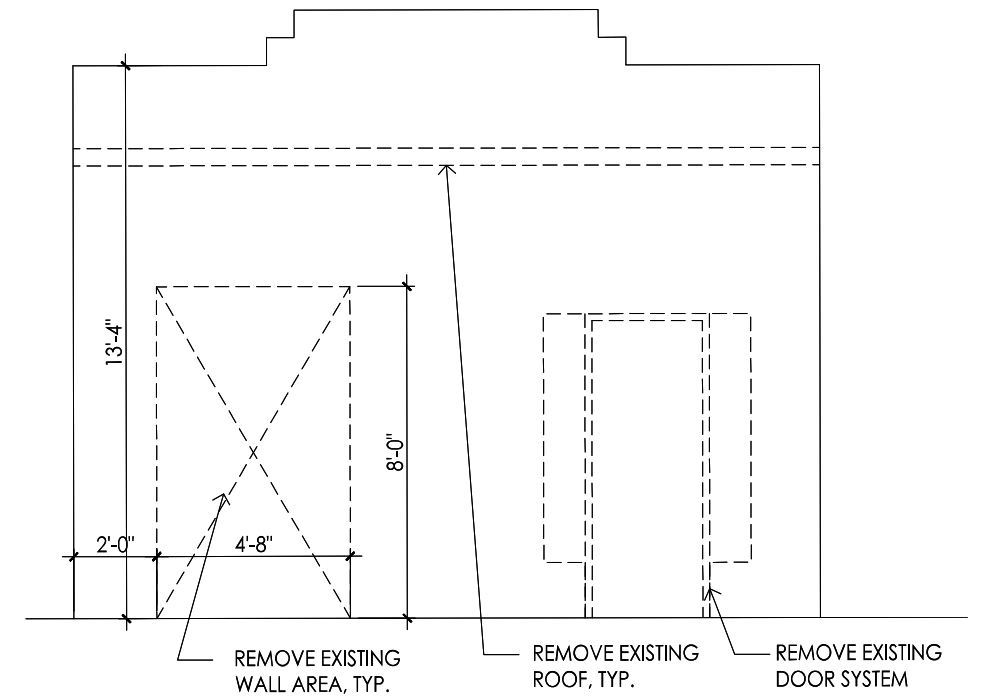
**NORTH EXTERIOR ELEVATION DEMOLITION**



**EAST EXTERIOR ELEVATION DEMOLITION**



**SOUTH EXTERIOR ELEVATION DEMOLITION**



**WEST EXTERIOR ELEVATION DEMOLITION**

AREAS OF DEMOLITION

LIST OF EXTERIOR MATERIALS

**WOOD/ FIBER CEMENT SIDING** - 6" LAP SIDING,  
PAINTED (HARDIE OR EQUAL) - GRAY FINISH -  
SHERWIN WILLIAMS - 7076 CYBERSPACE

**TRUE STUCCO** - WHITE INTEGRAL FINISH -  
SHERWIN WILLIAMS - STANDARD WHITE

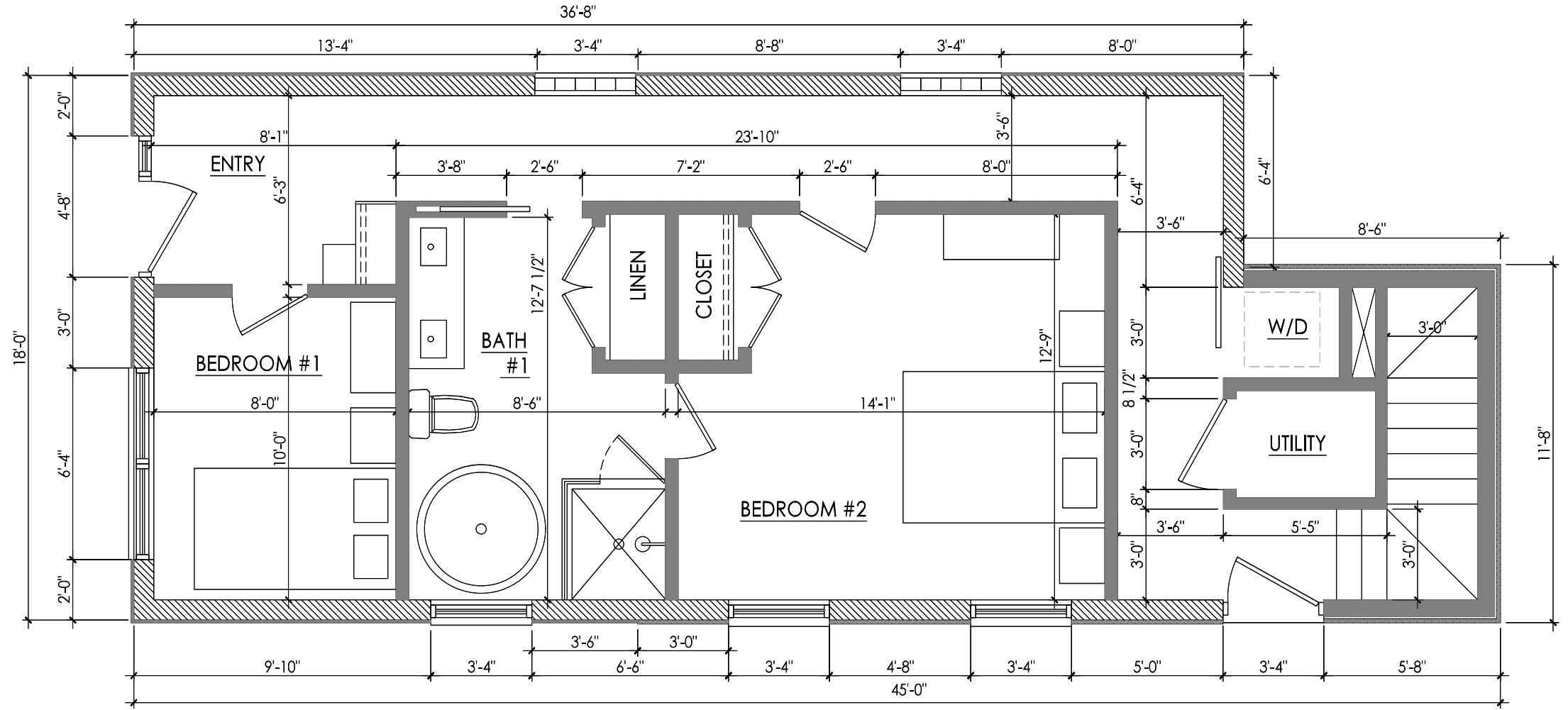
**DOORS** - PELLA WOOD ENTRY DOORS W/  
OFFSET 1/4 LITES - SHERWIN WILLIAMS -7073  
NETWORK GRAY

**WINDOWS** - PELLA - ARCHITECT SERIES 850  
DOUBLE HUNG - SHERWIN WILLIAMS -7073  
NETWORK GRAY

**METAL GUARDRAIL** - POWDER COATED FINISH -  
SHERWIN WILLIAMS - 6991 - BLACK MAGIC

**METAL AWNING** - POWDER COATED FINISH -  
SHERWIN WILLIAMS - 6991 - BLACK MAGIC

PLEASE SEE EXTERIOR  
ELEVATIONS FOR LOCATIONS  
OF EXTERIOR MATERIALS



MAIN LEVEL FLOOR PLAN

LIST OF EXTERIOR MATERIALS

WOOD/ FIBER CEMENT SIDING - 6" LAP SIDING, PAINTED (HARDIE OR EQUAL) - GRAY FINISH - SHERWIN WILLIAMS - 7076 CYBERSPACE

TRUE STUCCO - WHITE INTEGRAL FINISH - SHERWIN WILLIAMS - STANDARD WHITE

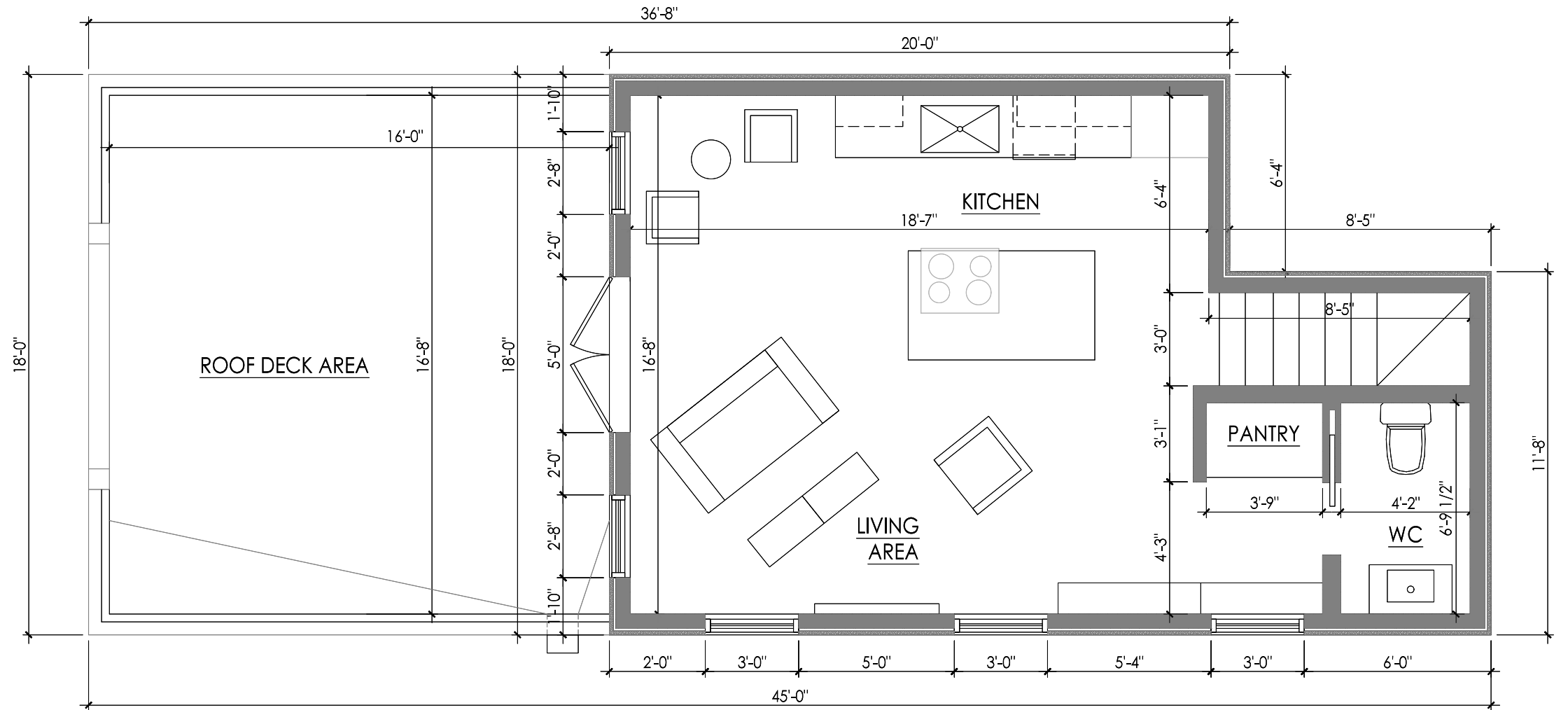
DOORS - PELLA WOOD ENTRY DOORS W/ OFFSET 1/4 LITES - SHERWIN WILLIAMS -7073 NETWORK GRAY

WINDOWS - PELLA - ARCHITECT SERIES 850 DOUBLE HUNG - SHERWIN WILLIAMS -7073 NETWORK GRAY

METAL GUARDRAIL - POWDER COATED FINISH - SHERWIN WILLIAMS - 6991 - BLACK MAGIC

METAL AWNING - POWDER COATED FINISH - SHERWIN WILLIAMS - 6991 - BLACK MAGIC

PLEASE SEE EXTERIOR ELEVATIONS FOR LOCATIONS OF EXTERIOR MATERIALS



UPPER LEVEL FLOOR PLAN



LIST OF EXTERIOR MATERIALS

WOOD/ FIBER CEMENT SIDING - 6" LAP SIDING, PAINTED (HARDIE OR EQUAL) - GRAY FINISH - SHERWIN WILLIAMS - 7076 CYBERSPACE

TRUE STUCCO - WHITE INTEGRAL FINISH - SHERWIN WILLIAMS - STANDARD WHITE

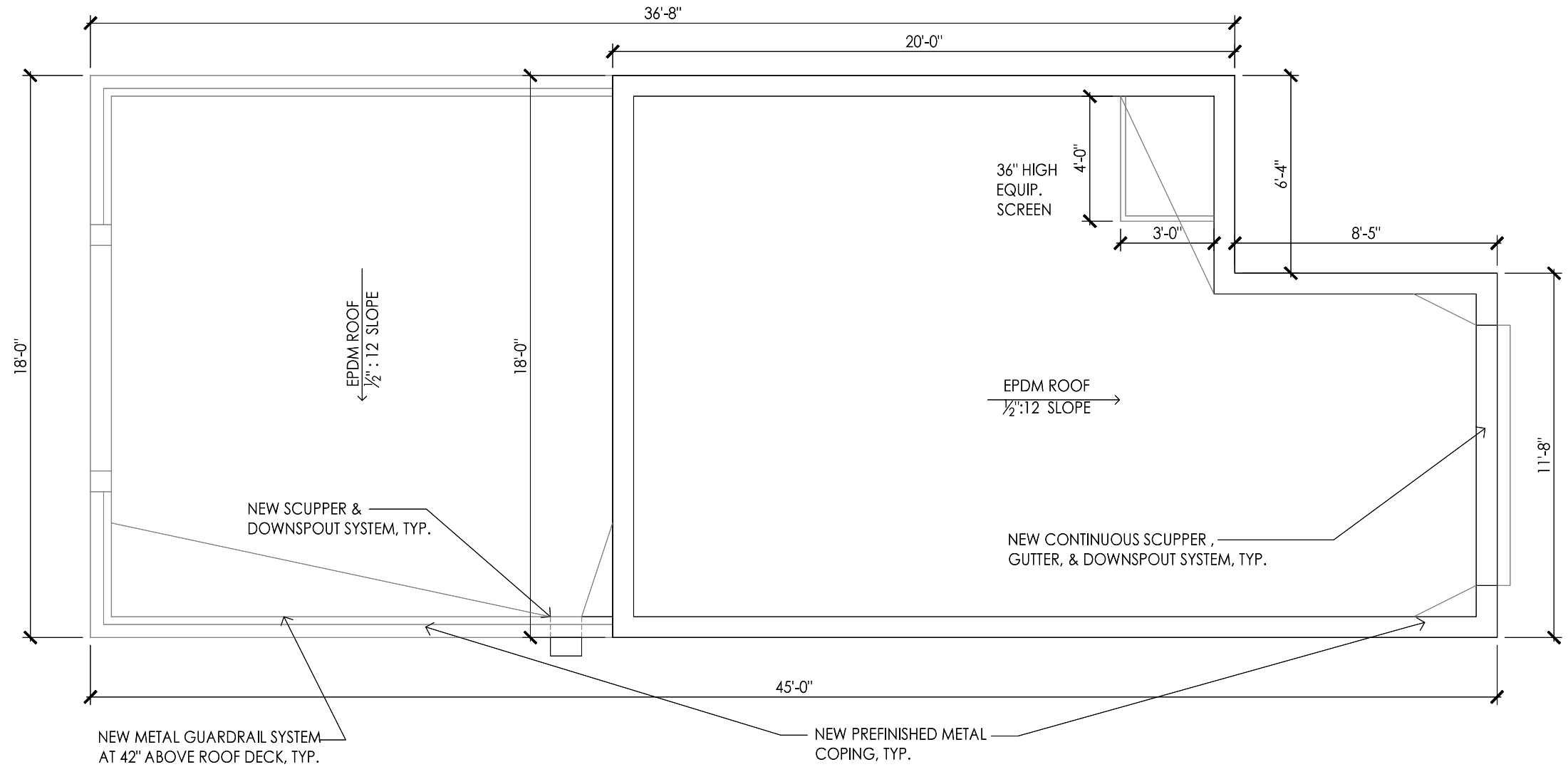
DOORS - PELLA WOOD ENTRY DOORS W/ OFFSET 1/4 LITES - SHERWIN WILLIAMS -7073 NETWORK GRAY

WINDOWS - PELLA - ARCHITECT SERIES 850 DOUBLE HUNG - SHERWIN WILLIAMS -7073 NETWORK GRAY

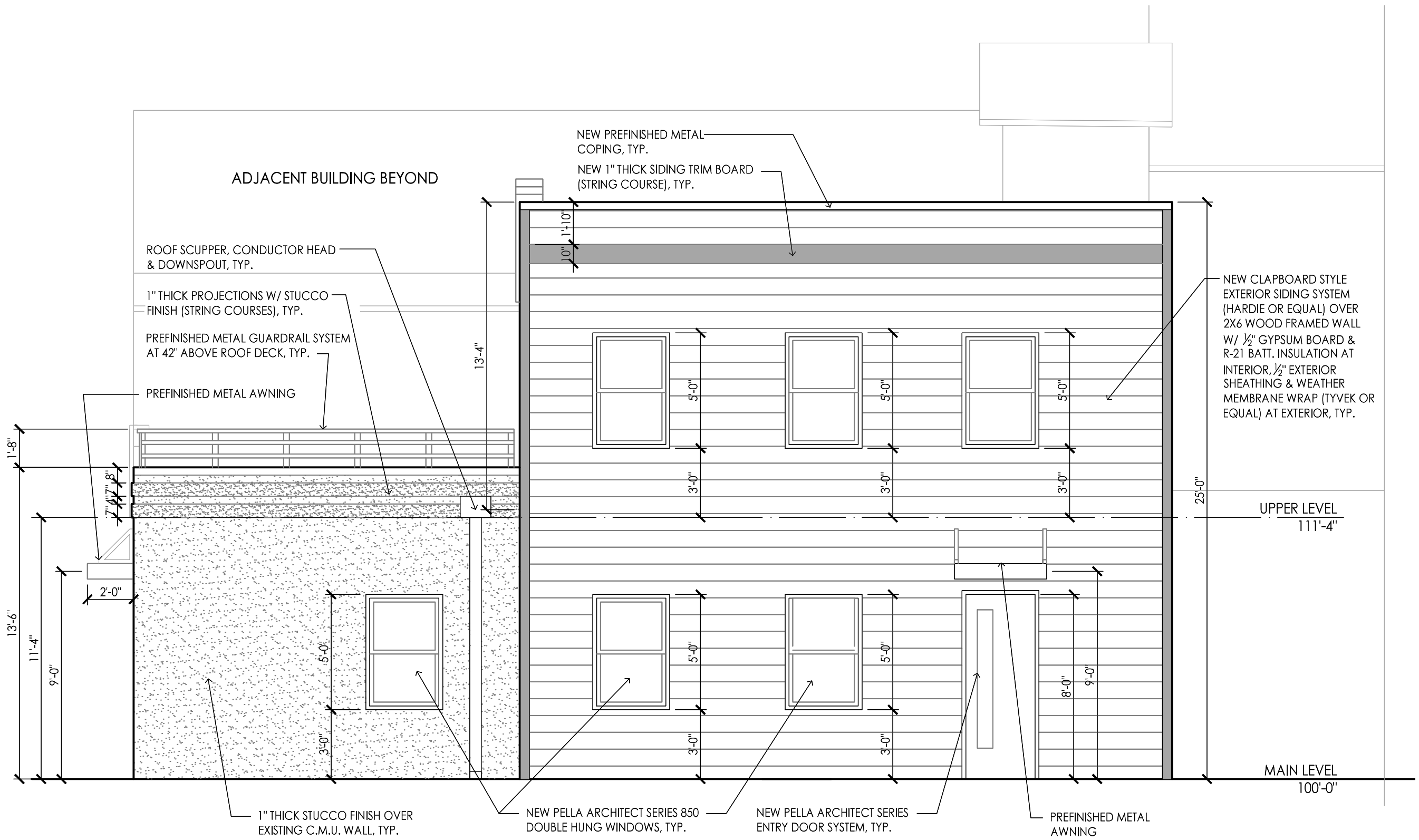
METAL GUARDRAIL - POWDER COATED FINISH - SHERWIN WILLIAMS - 6991 - BLACK MAGIC

METAL AWNING - POWDER COATED FINISH - SHERWIN WILLIAMS - 6991 - BLACK MAGIC

PLEASE SEE EXTERIOR ELEVATIONS FOR LOCATIONS OF EXTERIOR MATERIALS



ROOF PLAN



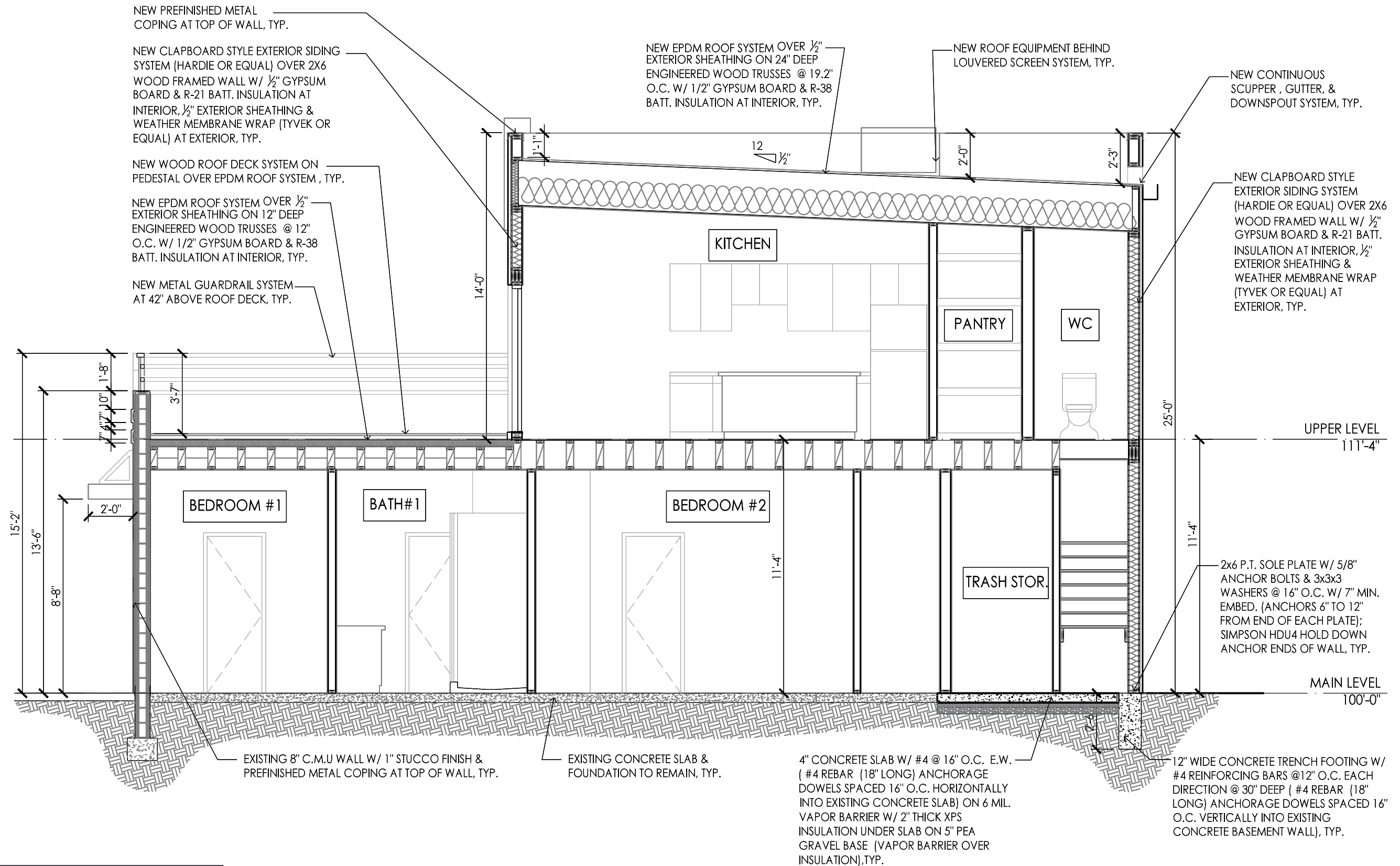
**SOUTH ELEVATION**

**EXTERIOR ELEVATIONS**





WEST ELEVATION



OVERALL BUILDING SECTION





VIEW FROM SW CORNER OF PRICE ST AND PERRY ST

EXTERIOR PERSPECTIVE VIEW



