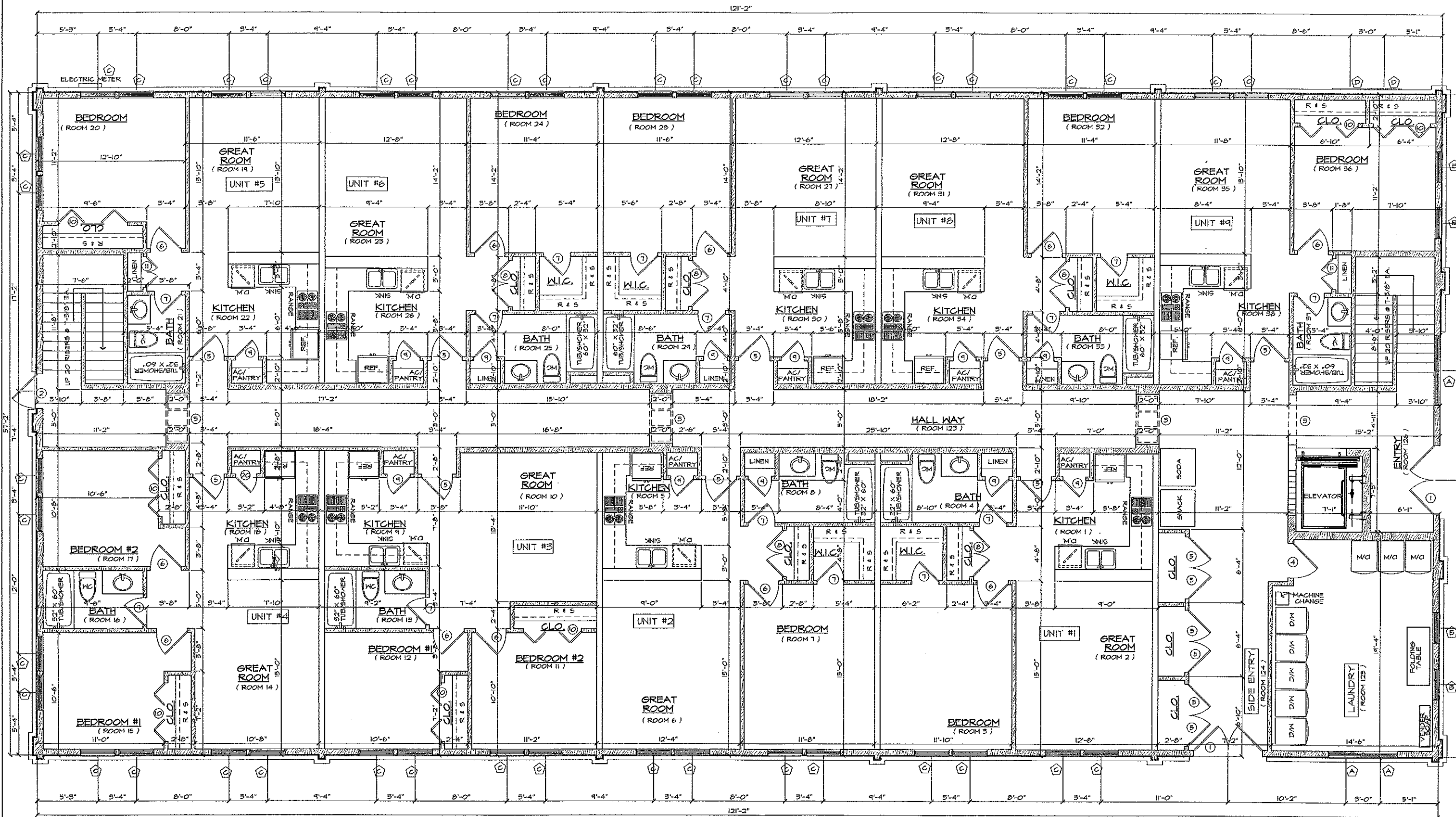


EXISTING FLOOR PLAN
SCALE 1/4" = 1'

REVISIONS	BY

ADDITIONS/ALTERATIONS TO
800 HABERSHAM STREET
 FOR GO LONG WIN, LLC., SAVANNAH, GA

DRAWN	S.J.S.
CHECKED	C.W.B.
DATE	05-24-09
SCALE	1/4" = 1'-0"
JOB NO.	08-054
SHEET	

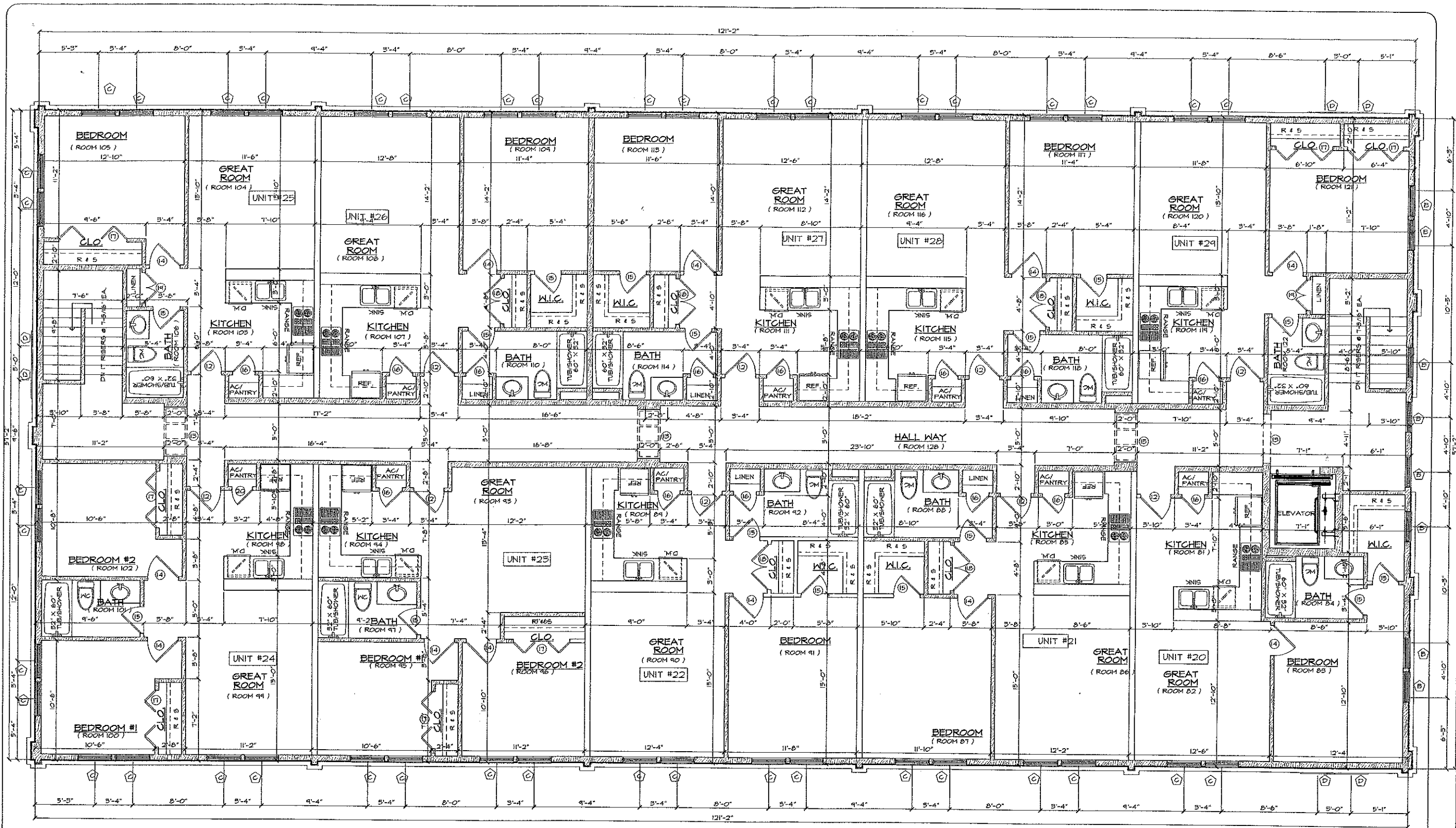


PROPOSED FIRST FLOOR PLAN
 SCALE 1/4" = 1'
 0- ONE BEDROOM APTS. &
 2- TWO BEDROOM APTS.

REVISIONS	BY

ADDITIONS/ALTERATIONS TO
 800 HABERSHAM STREET
 FOR GO LONG WIN, LLC, SAVANNAH, GA

DRAWN	S.J.S.
CHECKED	C.W.B.
DATE	03-24-09
SCALE	1/4" = 1'-0"
JOB NO.	08-054
SHEET	



REVISIONS	BY

ADDITIONS/ALTERATIONS TO
800 HABERSHAM STREET
 FOR GO LONG WIN, LLC., SAVANNAH, GA

PROPOSED THIRD FLOOR PLAN
 SCALE 1/4" = 1'
 8- ONE BEDROOM APTS. &
 2- TWO BEDROOM APTS.

DRAWN	S.J.S.
CHECKED	C.W.B.
DATE	05-24-09
SCALE	1/4" = 1'-0"
JOB NO.	08-054
SHEET	5