

# Junior League of Savannah Women's Legacy Monument

Historic Site and Monument Commission  
Application for Monument

The Legacy Arch

8/4/2025

## Table of Contents

Table of Contents .....	1
Introduction .....	2
Committee.....	3

Title .....	4
Description of Monument .....	5
Design Elements.....	7
Map of the Monument .....	9
Color Photographs of Proposed Site .....	10
Scaled, Dimensioned Site Plan.....	11
Architectural Drawings.....	12
3D Rendering.....	Error! Bookmark not defined.
Painting .....	13
Text of Monument (Plaques).....	14
Enhancing Space and Surrounding.....	15
Theme.....	Error! Bookmark not defined.
Recent Monuments by Artist .....	16
Estimate Timeline .....	17
Detailed Budget .....	18
Funds Secured .....	18
Maintenance Schedule .....	20
Detailed Budget .....	Error! Bookmark not defined.

## Introduction

The Junior League of Savannah, a non-profit organization, stands at the forefront of women's leadership and community volunteerism, with a legacy that spans nearly a century. Founded in 1926 through the merger of the Margaret Bottome Circle and the Elizabeth Butler Circle, the organization became a part of the Association of Junior Leagues of America. Throughout their history, the women of the Junior League of Savannah have contributed to numerous important initiatives, including war efforts during the 1940s, educational and environmental legislation, and women's rights

advocacy. The Thrift Sale, first held in 1942 and concluded in 2024, as well as Fit Kids Fest, a signature event that promotes the health and wellness of the community, celebrating 13 years in 2025. Events such as these continue to inspire the Junior League of Savannah to create a lasting impact on the community of Savannah and the Lowcountry.

The Women's Suffrage National Monument Foundation was approved by Congress to establish the first and only monument placed on the National Mall that is dedicated to women's suffrage and the women who fought for a better America. The monument is meant to showcase the diverse, inclusive, and inspiring stories of the women who never gave up and gave in to one of the longest and largest movements in the United States. This movement has now become a national one, inspiring the women of Junior League to recognize and want to honor women's contributions in public spaces, addressing the stark underrepresentation of women in public monuments.

The proposed monument, designed by SCAD Serve, will speak to the evergreen story of women's leadership in Savannah and surrounding communities and serve as a powerful testament to women's empowerment. To honor and inspire future generations, the monument will symbolize the Junior League of Savannah's ongoing mission to advance women's leadership, foster meaningful community impact, and celebrate members' achievements. Through this monument in commemoration of the Junior League of Savannah Centennial Celebration in January 2026, we aim to create a lasting tribute that reflects the key values of the Junior League of Savannah of women's empowerment through volunteer action, collaboration, and training.

Theme: The **Legacy Arch Monument** serves as a symbolic gateway to the organization's rich history of social and humanitarian impact. Honoring the contributions of women who have shaped Savannah's community through service and advocacy, the arch stands as a testament to their enduring legacy. By connecting the past with the present, this monument reinforces the vital role of women in local history, inspiring future generations to continue the tradition of leadership and positive change.

## Committee

Junior League of Savannah Immediate Past President- Ansley Howze  
Contact Info: (912) 663-4630 [ansleyhowze.jls@gmail.com](mailto:ansleyhowze.jls@gmail.com)

Junior League of Savannah President – Mary Beth Kennedy

Contact Info: [president@jrleaguesav.org](mailto:president@jrleaguesav.org)

SCAD Serve Professor - Scott Horner

Project Manager - Isa Rivera

Research Lead - Emma Reed

Visual Development Lead - Miranda Ridley

Graphics Lead - Keinan Mitchell

Documentation Lead - Calvin McBroom

Jr. Designer - Ali Rooha

Jr. Designer - Anna Desantis

Jr. Designer - Daniella Reilly

Jr. Designer - Yanyun Li

Jr. Designer - Yanyan Chu

Jr. Designer - Zhuoyin He

## Junior League of Savannah Women's Legacy Monument

The Legacy Arch – Framing the past, present, and future of Women in Savannah.



## **Artist's Statement**

The Legacy Arch Portal is configured to be reminiscent of the prominent wrought iron balconies, gates, fences, and doors that define the historic district's 18th-century architecture. This wrought iron door is intricately crafted with scenes and figures representing the initiatives of the Junior League of Savannah and the Association of Junior Leagues International as it takes reference to embody their mission and values of "advancing women's leadership for meaningful community impact through volunteer action, collaboration, and training."

The design of the monument as a door symbolizes both the pathway and metaphors of women who have made and continue to make, lasting contributions to their communities and the organization. The design seamlessly weaves in motifs reflecting women's involvement in various initiatives, such as the current K-12 education programs and the Meals on Wheels movement.

# Description of Monument

The proposed is a testament to the women of the Junior League of Savannah and their legacy. The monument is to celebrate a century of women's leadership and community impact. With the design and materiality, the monument will be a powerful tribute to the women of Savannah while seamlessly blending traditional Savannah elements.

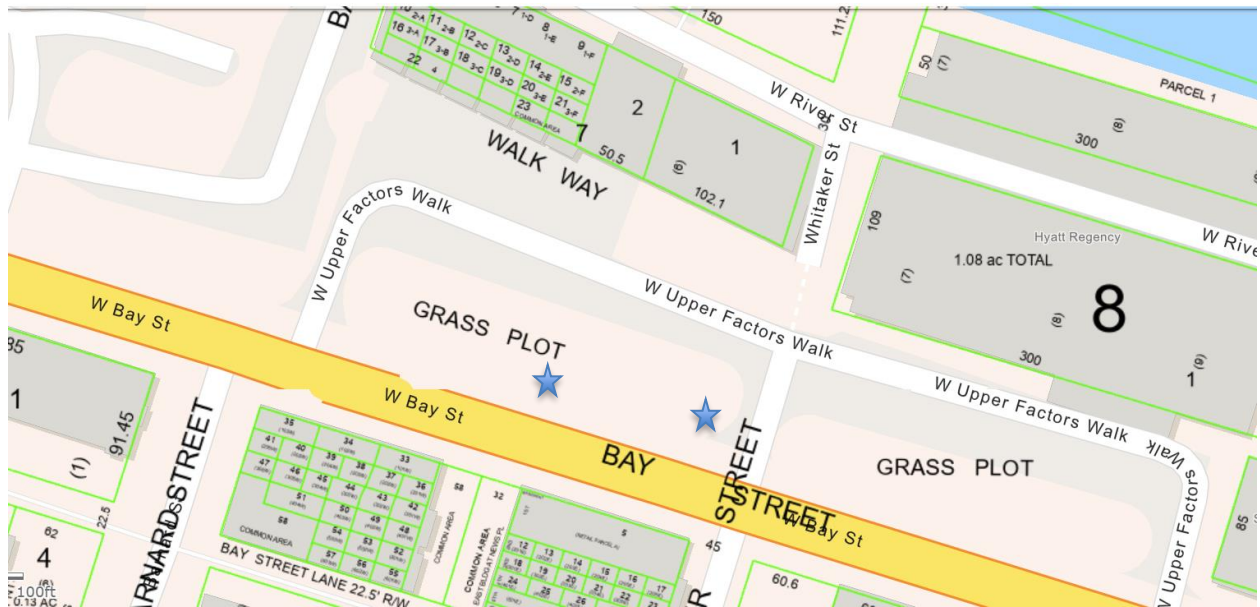
- The total height of the piece is 12 feet and 8 ½ inches tall
- The height of the door is 7 feet and 5 inches tall
- The stone base is 2 feet and 6 ½ inches tall
- The depth of the overall door is 2 feet and 1 ½ inches
- The width of the door is 9 feet and 1 ½ inches

## Design Elements

- The placement of the monument is in the grassy area by W Upper Factors Walk and W Bay Street in front of the Cotton Sail & Bohemian Hotels, with Ruth's Chris opposite.
- Design inspired by the prominent wrought iron balconies, gates, fences, and doors that define the historic district's 18th-century architecture
- The scenes and figures represent the initiatives of the Junior League of Savannah and the Association of Junior Leagues International. They take from their mission and values of "advancing women's leadership for meaningful community impact through volunteer action, collaboration, and training."



# Site Plan



## Color Photographs of Proposed Site

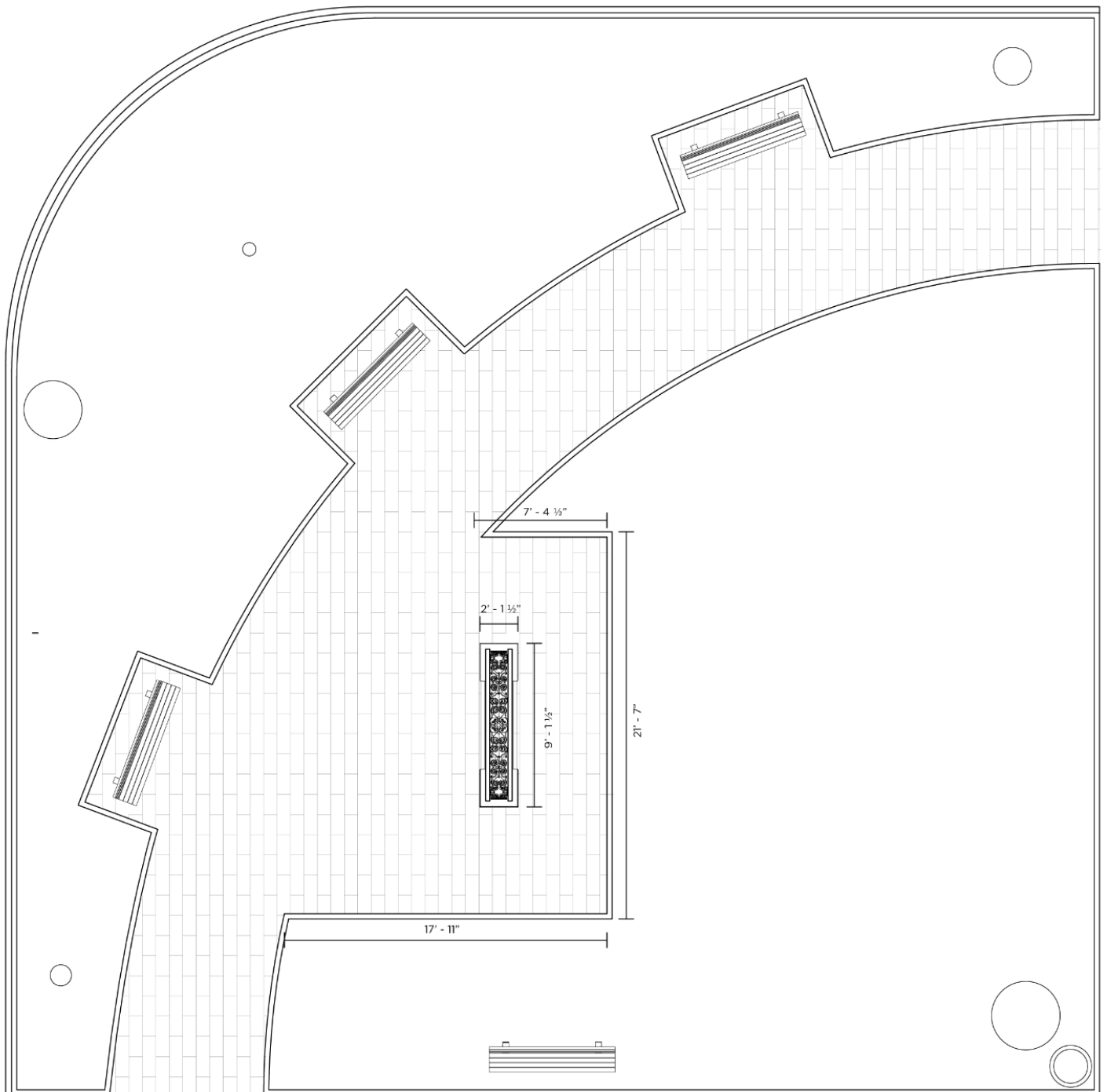


We are working with Parks and Trees and the MPC to determine the best location of the two above in the grassy space based on the tree roots. The pole shown is 16 foot high (about 4 foot higher than the monument) and did not interfere with any of the existing tree structure. The monument will either face Bay Street or face West Upper Factors Walk dependent on final feedback.

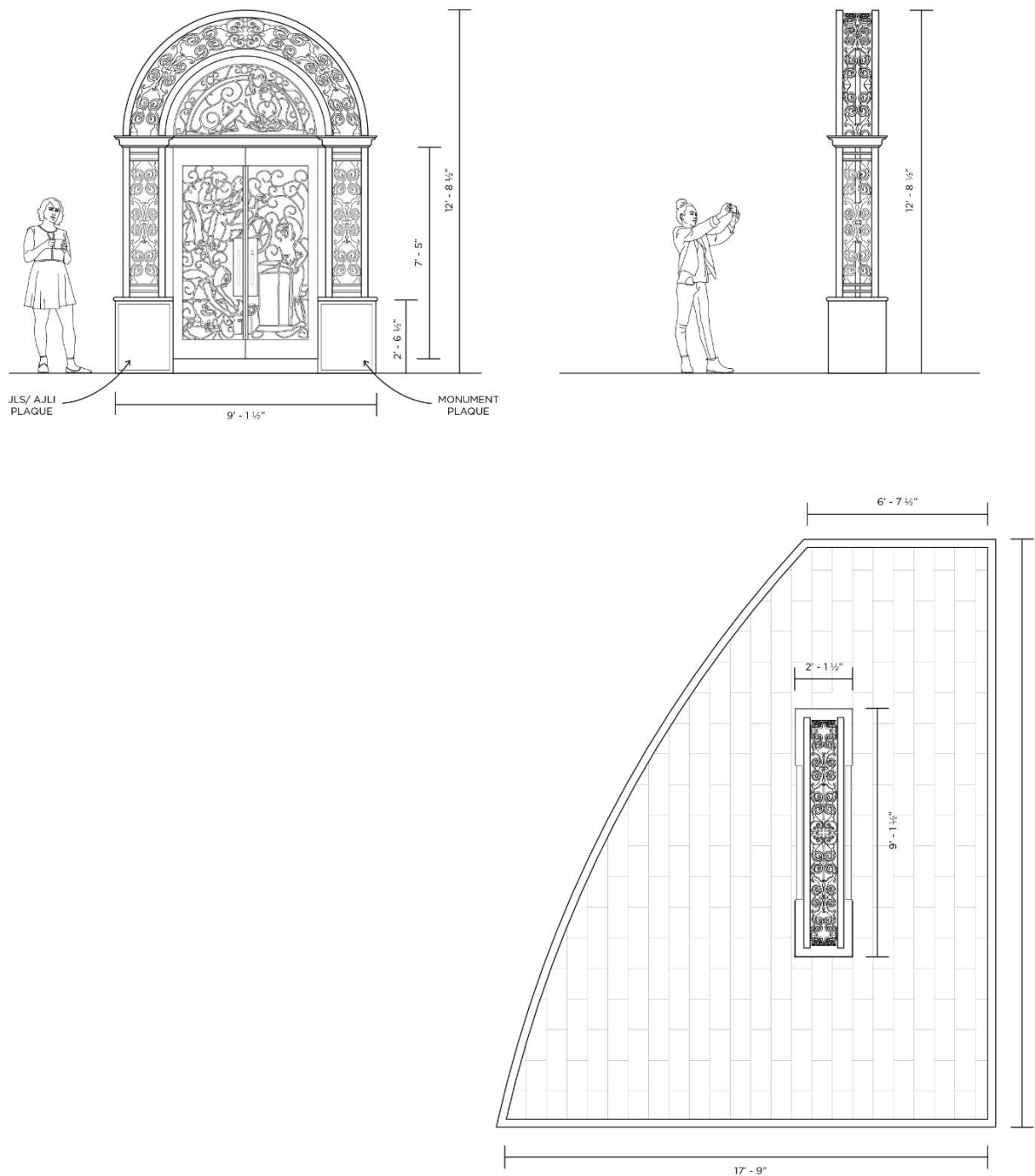




## Scaled, Dimensioned Site Plan



# Architectural Drawings





## Painting/3D Rendering



## **Text of Monument (Plaque)**

This monument honors the Junior League of Savannah's century of women's leadership and community service. The symbolic door represents the transformative journey of women's lasting contributions. Motifs highlight key initiatives of developing women to do a world of good right here in our community. It commemorates the League's journey from 1926 to today, reflecting its commitment to empowering women and enriching communities.

The font will be Gotham and Arial, in line with the Junior League brand standards, with an appropriate size to fit on the granite portion in the lower left corner of the monument.

## Enhancing Space and Surrounding

The Junior League of Savannah's Women's Legacy Monument will beautifully enhance the underutilized green space near W Factors Walk and W Bay Street — a prominent tour stop and a high-traffic area for both locals and tourists. Situated in the heart of Savannah's historic district, this location offers the perfect backdrop for honoring the powerful impact of women in our region's history. The monument will not only add depth to the visitor experience but also serve as a lasting landmark of inspiration, education, and community pride.

For over a century, the Junior League of Savannah has been a driving force behind meaningful change in our community—advocating for women and children, launching critical civic initiatives, and preserving the city's rich cultural heritage. Placing the Women's Legacy Monument in this prominent location underscores that legacy, both literally and symbolically. Just steps from the Savannah River and surrounded by stories of our city's past, this monument ties together the League's historic impact with its ongoing commitment to shaping Savannah's future. It stands as a testament to the women who have led with purpose and compassion—and to those who will follow in their footsteps.

The proposed monument will stand as a testament to the past, present, and future accomplishments and initiatives of the Junior League of Savannah, showcasing their forever love and appreciation for the Savannah community.



## Recent Monuments by Artist

### Ironworks America, LLC

<https://www.ironworksamericallc.com/>

Recent examples of custom and standard projects by Ironworks America, LLC can be viewed in detail here: <https://www.ironworksamericallc.com/custom>

## Estimate Timeline

- Application Re-Submission – 8/4/25
- Approval – Fall 2025
- Fabrication – Spring 2026
- Site Prep – Spring 2026
- Installation – Summer 2026
- Dedication – Summer 2026

Based on the approval timeline, we will adjust.

## Detailed Budget

- Iron Elements - \$90k
- Granite Base - \$24k
- Delivery & Installation– \$27k
- Site Prep & Landscaping – to be confirmed

## Funds Secured

The Junior League of Savannah is currently pursuing 3 grants to support the monument and has plans for a centennial campaign, the 1926 campaign, launching soon.

## **Maintenance Schedule**

Once the necessary arrangements are in place, the responsibility for upkeep will transition to the City of Savannah. This ensures a seamless continuation of care for the monument. The City of Savannah Park and Trees department is responsible for the maintenance of the vegetation and trees, which helps conserve nearby public monuments.

Maintenance will be necessary to ensure the longevity of the monument, including periodic sealing of the iron material and the cleaning of the granite material.